

**Origination Form**  
Proposed Revisions to a Standard Plans Index

<b>Originator:</b>	Taylor, Earl	<b>Index Number:</b>	102-120
<b>Date:</b>	5/16/2025	<b>Sheet Number(s):</b>	2
<b>E-mail:</b>	earl.taylor@dot.state.fl.us	<b>Index Title:</b>	Low Profile Barrier

**Summary of the changes:**

Sheet 2: Deleted payment note in Note 2

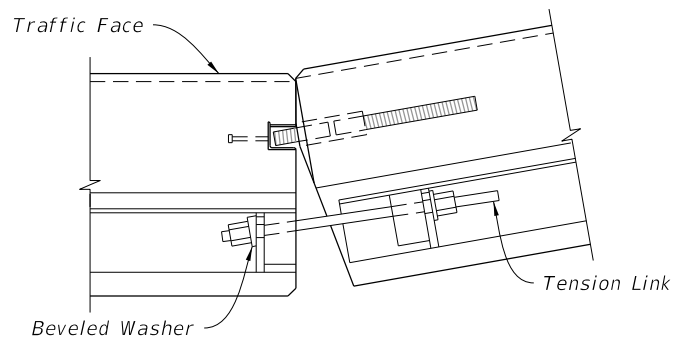
**Commentary/Background:**

Requested by D1 to fix the inconsistency between this index and index 102-100

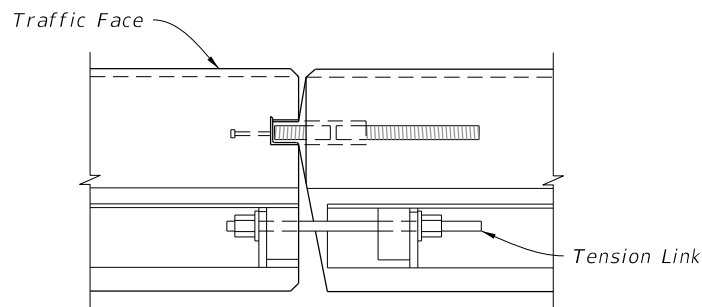
<b>Other Affected Documents/Offices</b>	<b>Person Contacted</b>	<b>Affected (Yes/No)</b>
<b>Other Standard Plans</b>		No
<b>FDOT Design Manual</b>		No
<b>Standard Specifications</b>		No
<b>Basis of Estimates Manual</b>		No
<b>Approved Product List</b>		No
<b>Construction Office</b>		No
<b>Maintenance Office</b>		No

**Implementation**

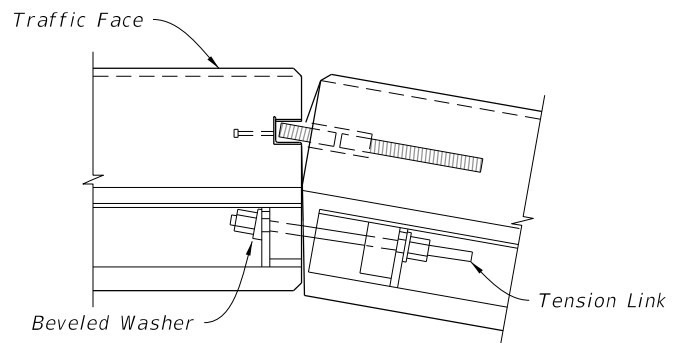
["FY-Standard Plans (Next Release)"]



CONCAVE CONNECTION

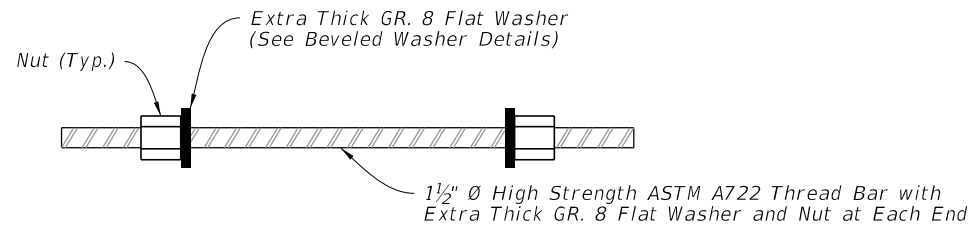


PARALLEL CONNECTION

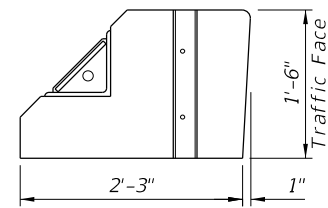


CONVEX CONNECTION

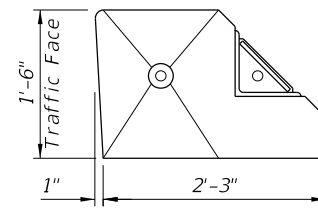
PLAN VIEWS OF CONNECTIONS



TENSION LINK DETAIL

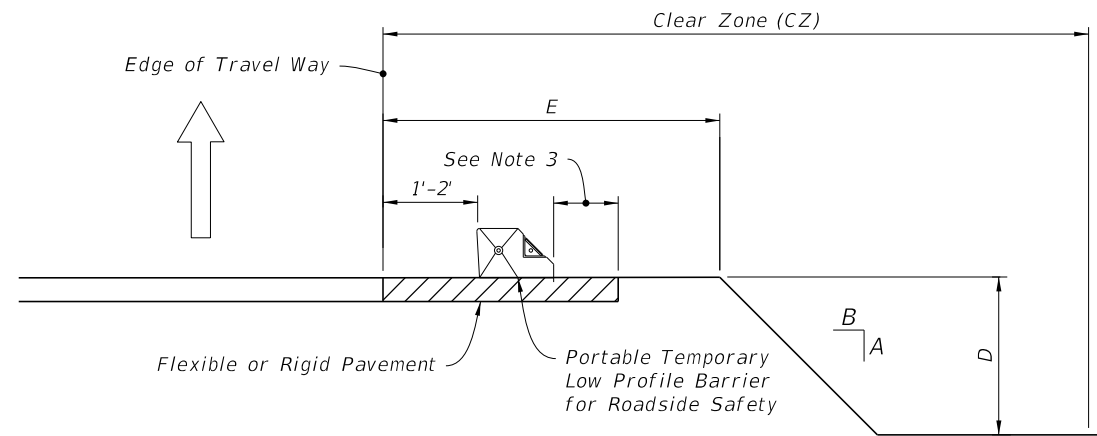


FLAT FACE FEMALE END



BEVELED FACE MALE END

END VIEWS



SETBACK DISTANCE AT DROP-OFFS

NOTES:

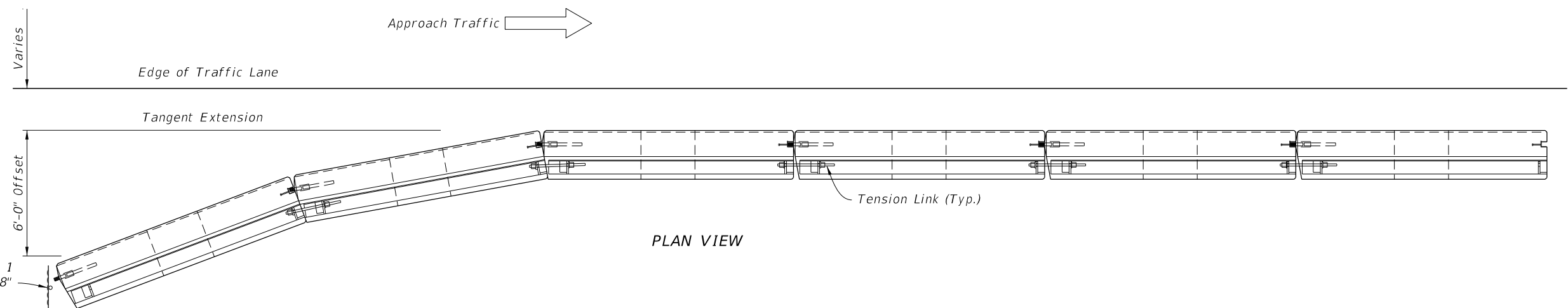
1. LIMITATION OF USE: This installation technique can only be used on flexible or rigid pavement
2. ASPHALT PAD: Where existing pavement is not present, construct 2" Asphalt Pad using miscellaneous asphalt pavement in accordance with Specification 339 with the exception that the use of a pre-emergent herbicide is not required. ~~Payment for asphalt pad will be included in the cost of the barrier.~~
3. Minimum 9" on 1:10 or flatter slopes for 'Portable Temporary Low Profile Barrier For Roadside Safety.' For values A, B, D and E see Index 102-600.

DELETED Payment Note

SYMBOLS:

- Type I Object Marker
- ⇒ Direction of Traffic

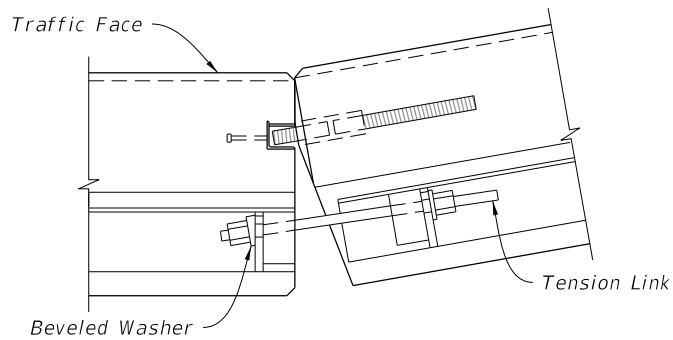
WORK ZONE SPEED	LATERAL OFFSET	SETBACK DISTANCE
45 MPH OR LESS	1' MIN, 2' PREFERRED	9"



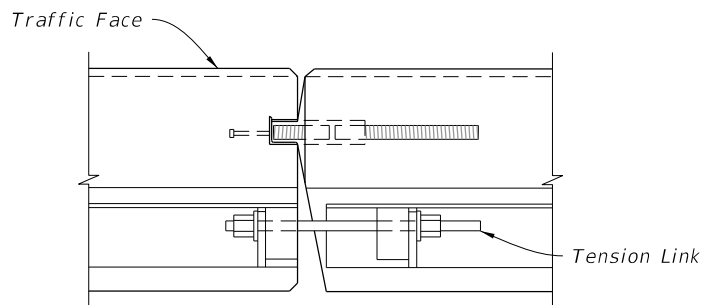
PLAN VIEW

APPROACH END OFFSET

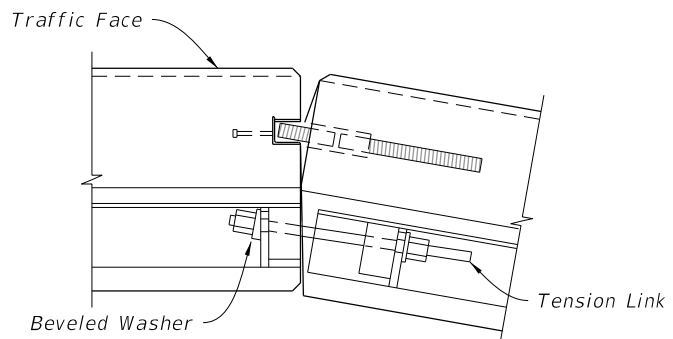
10/30/2024 2:48:42 PM



CONCAVE CONNECTION

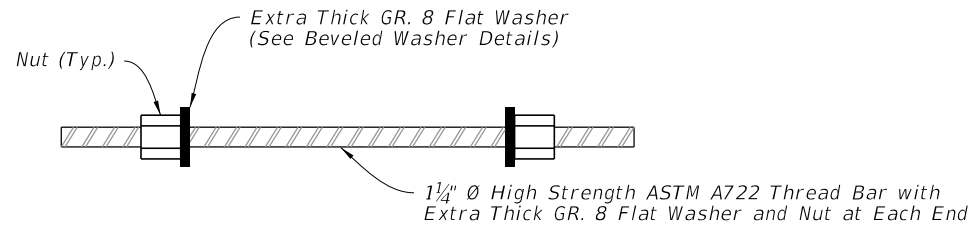


PARALLEL CONNECTION

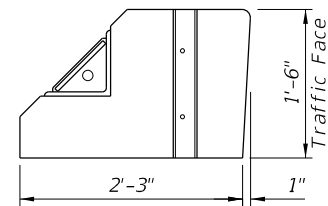


CONVEX CONNECTION

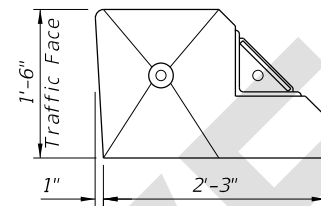
PLAN VIEWS OF CONNECTIONS



TENSION LINK DETAIL

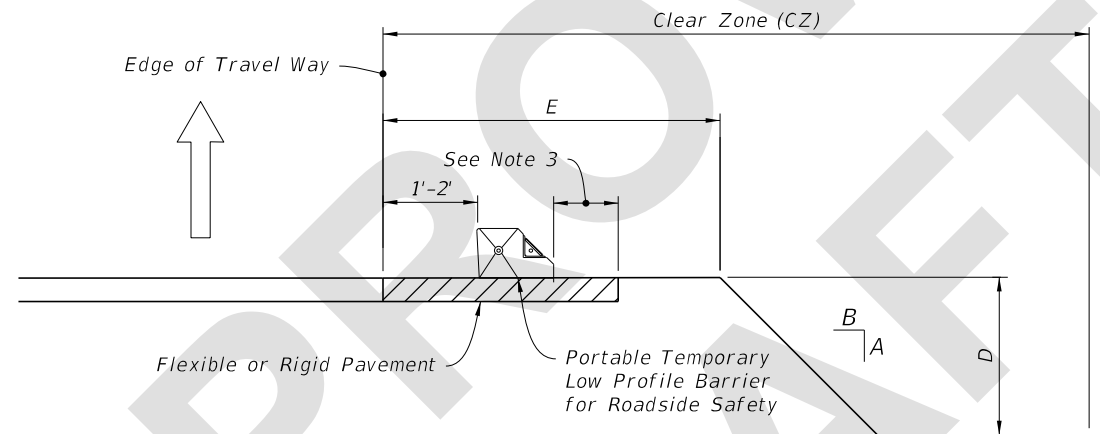


FLAT FACE FEMALE END



BEVELED FACE MALE END

END VIEWS



SETBACK DISTANCE AT DROP-OFFS

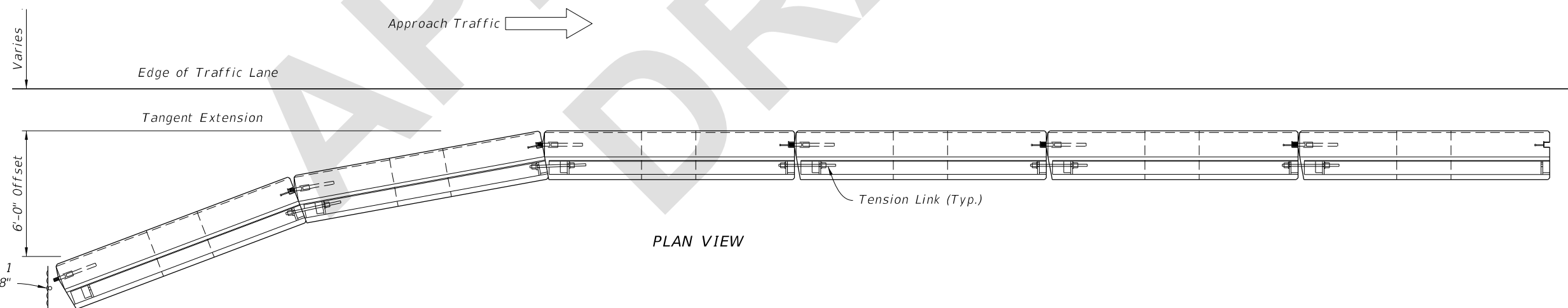
NOTES:

1. LIMITATION OF USE: This installation technique can only be used on flexible or rigid pavement.
2. ASPHALT PAD: Where existing pavement is not present, construct 2" Asphalt Pad using miscellaneous asphalt pavement in accordance with Specification 339 with the exception that the use of a pre-emergent herbicide is not required.
3. Minimum 9" on 1:10 or flatter slopes for 'Portable Temporary Low Profile Barrier For Roadside Safety.' For values A, B, D and E see Index 102-600.

SYMBOLS:

- Type I Object Marker
- ⇒ Direction of Traffic

WORK ZONE SPEED	LATERAL OFFSET	SETBACK DISTANCE
45 MPH OR LESS	1' MIN, 2' PREFERRED	9"



PLAN VIEW

APPROACH END OFFSET

6/26/2025 8:38:25 AM