

Origination Form

Proposed Revisions to a Standard Plans Index

Originator:	Turley, Joshua	Index Number:	715-010
Date:	5/17/2024	Sheet Number(s):	3
E-mail:	Joshua.Turley@dot.state.fl.us	Index Title:	HIGH MAST LIGHTING

Summary of the changes:

Sheet 3: SECTION A-A - Corrected weld detailing; HANDHOLE RING DETAIL - Removed superfluous CJP symbol. SECTION C-C - Removed weld hatching and updated weld symbol. Corrected order of anchor bolt nut labels. Corrected which nut may be half height and added thread extension min. SECTION D-D - Update wall thickness dimension and weld symbol.

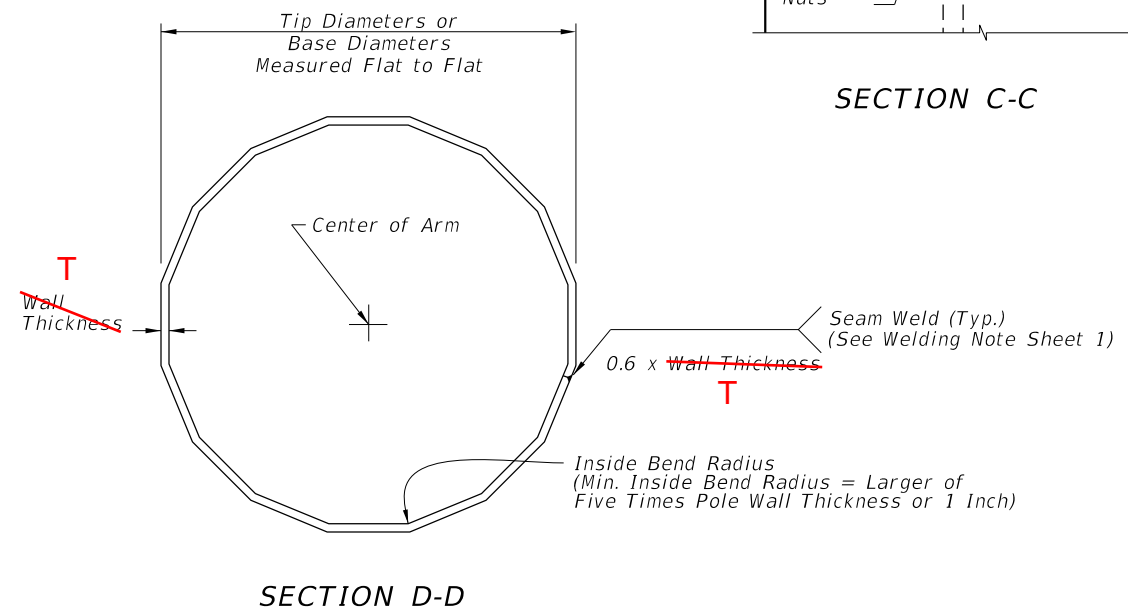
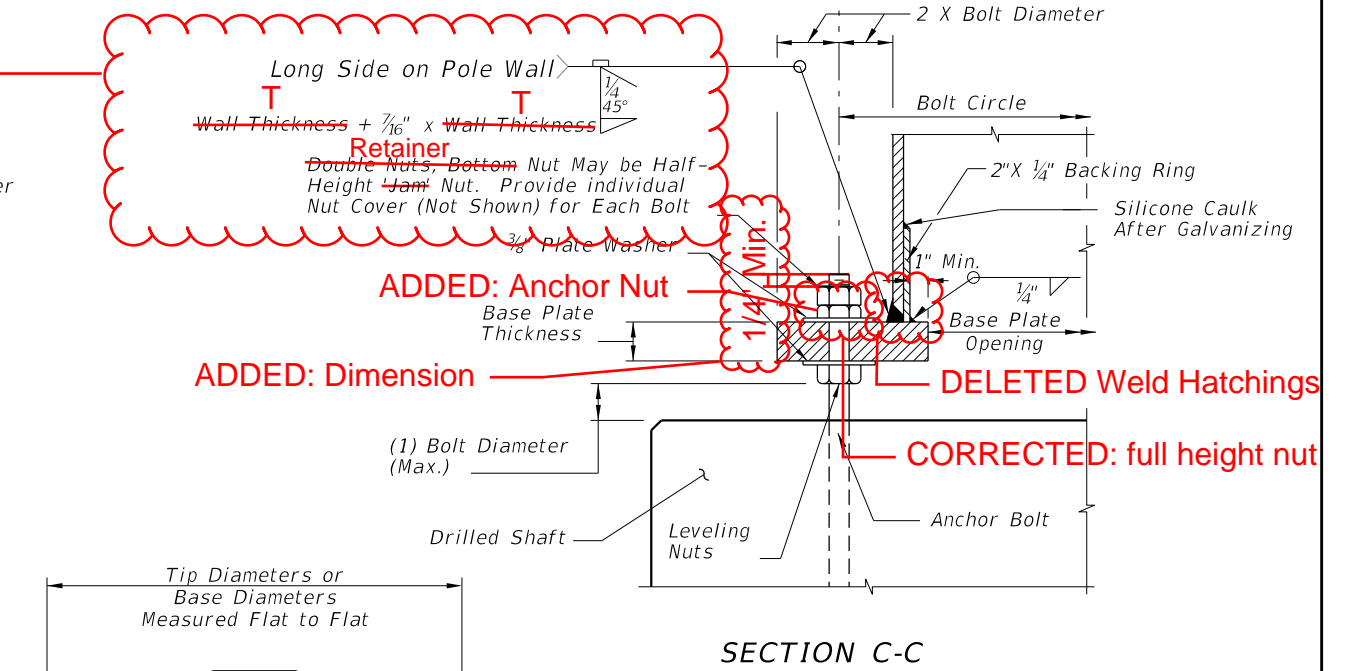
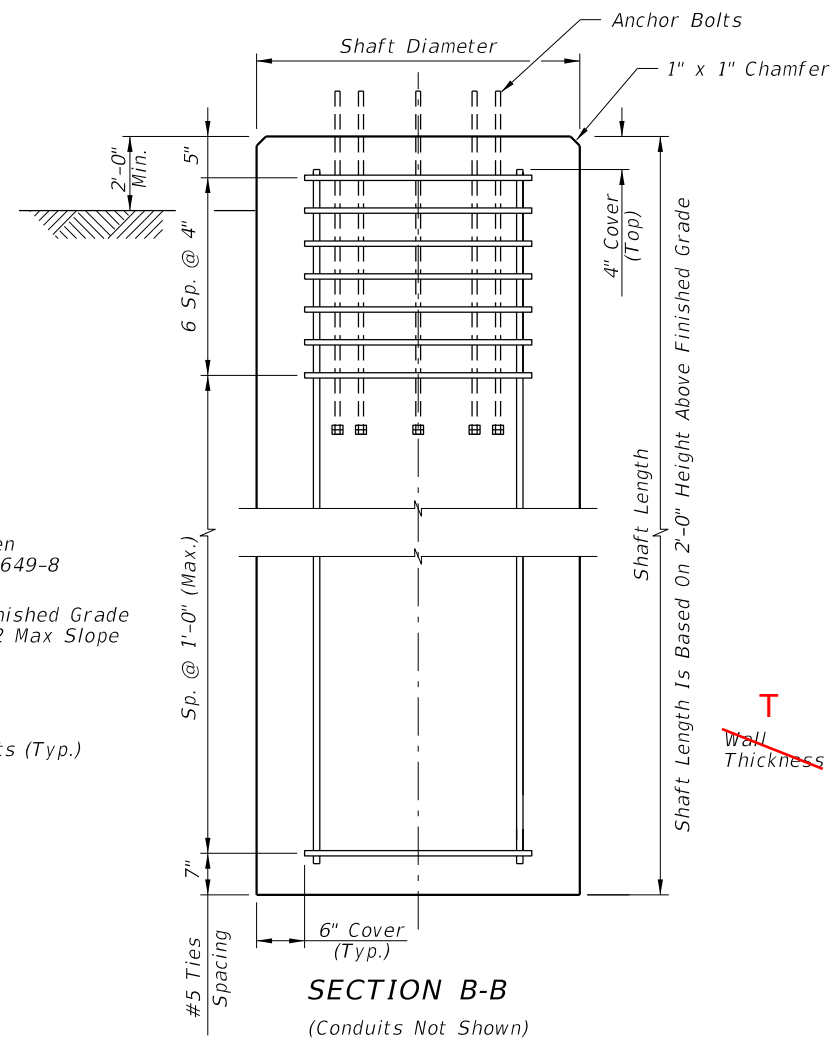
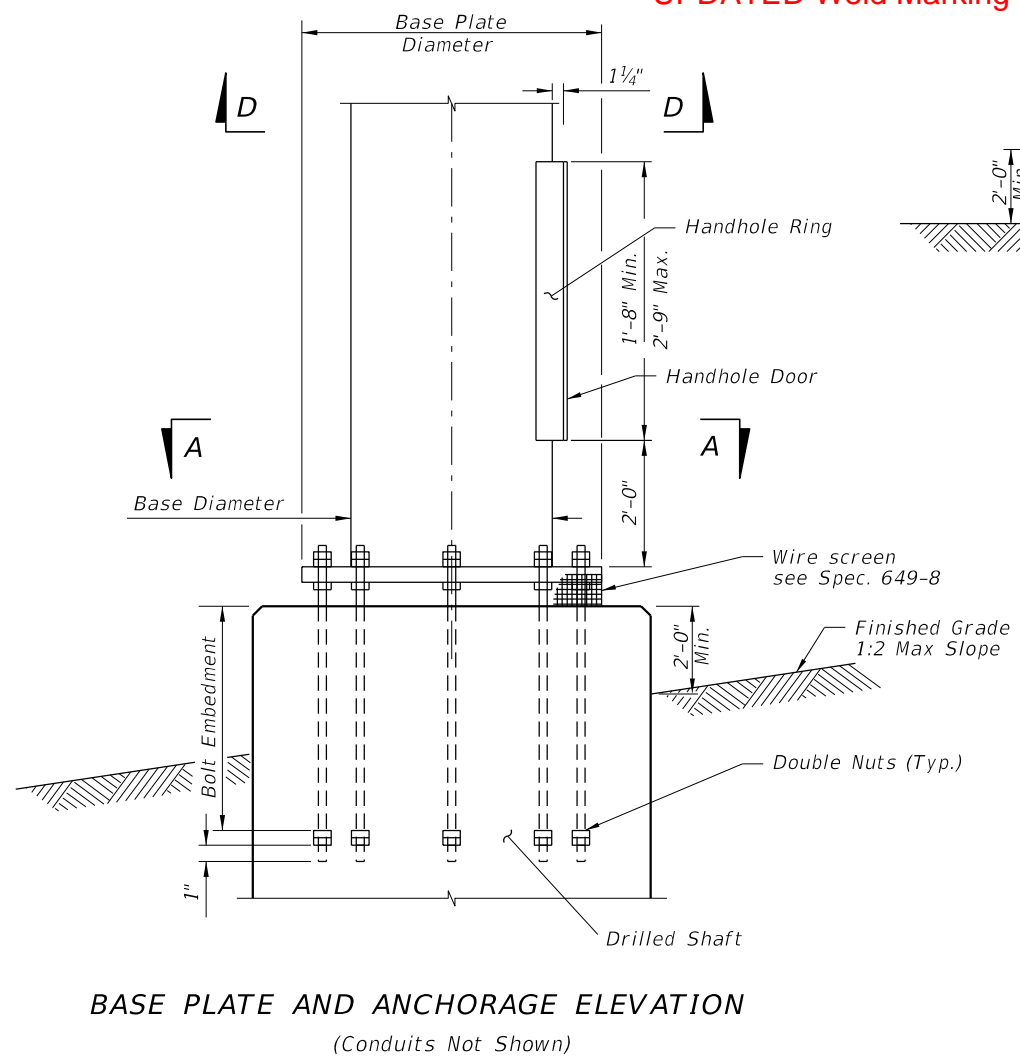
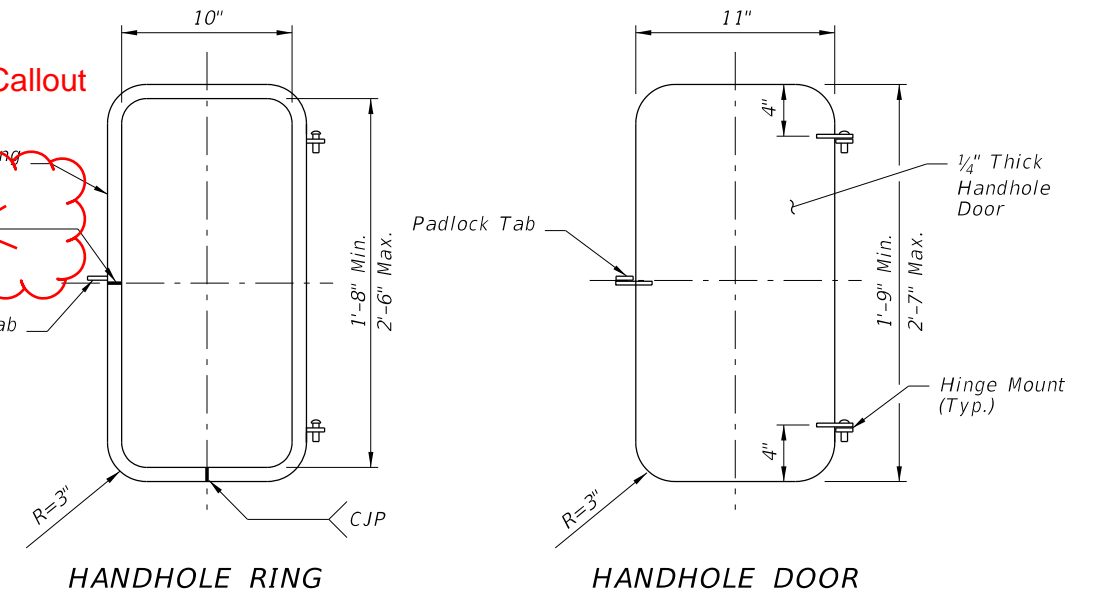
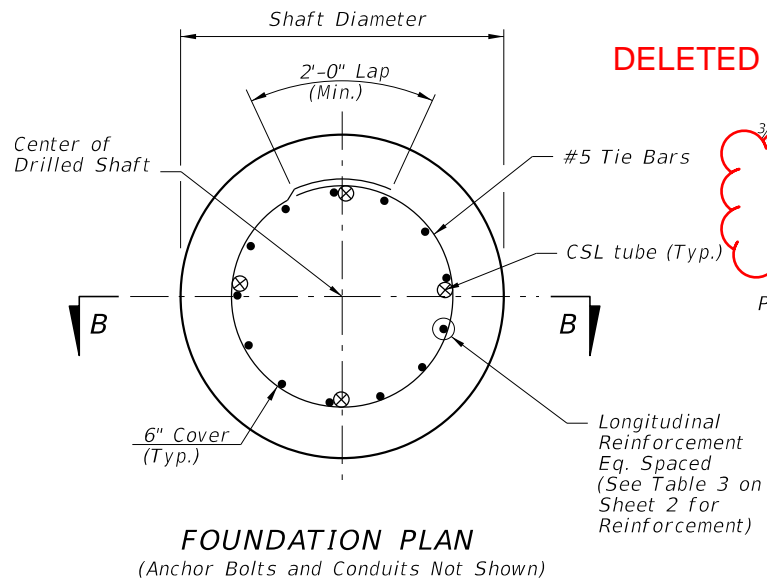
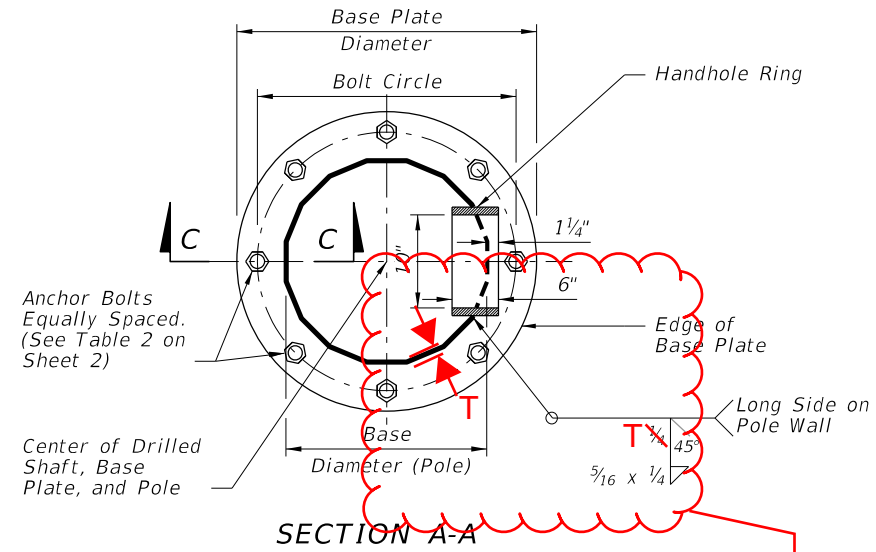
Commentary/Background:

These changes fix weld detailing errors and add clarity and brevity. There is an associated Spec change being drafted for Section 649 that pertains to process for tightening the anchor bolts. These changes make it so that the language aligns between the Spec and the Standard

Other Affected Documents/Offices	Person Contacted	Affected (Yes/No)
Other Standard Plans		No
FDOT Design Manual		No
Standard Specifications		No
Basis of Estimates Manual		No
Approved Product List		No
Construction Office		No
Maintenance Office		No

Implementation

["FY-Standard Plans (Next Release)"]



2025-26

FY 2024-25
STANDARD PLANS

HIGH MAST LIGHTING

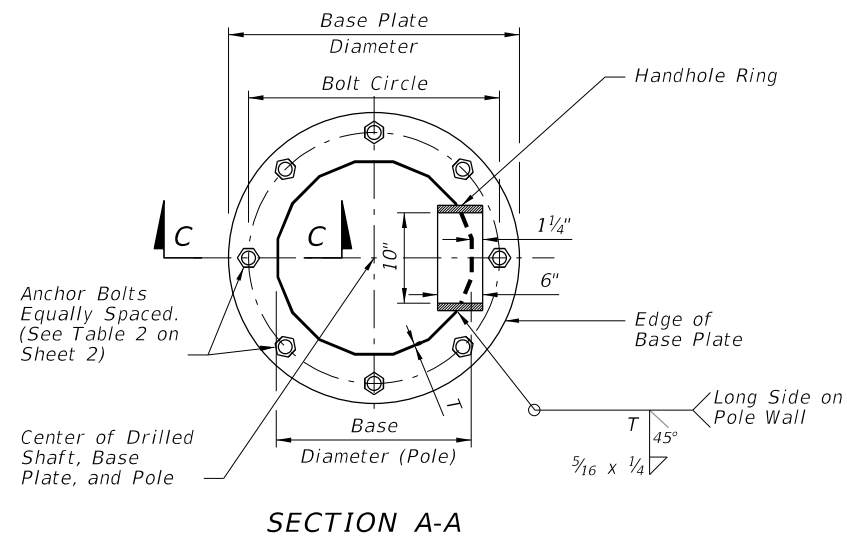
POLE FOUNDATION

LAST REVISION
11/01/23

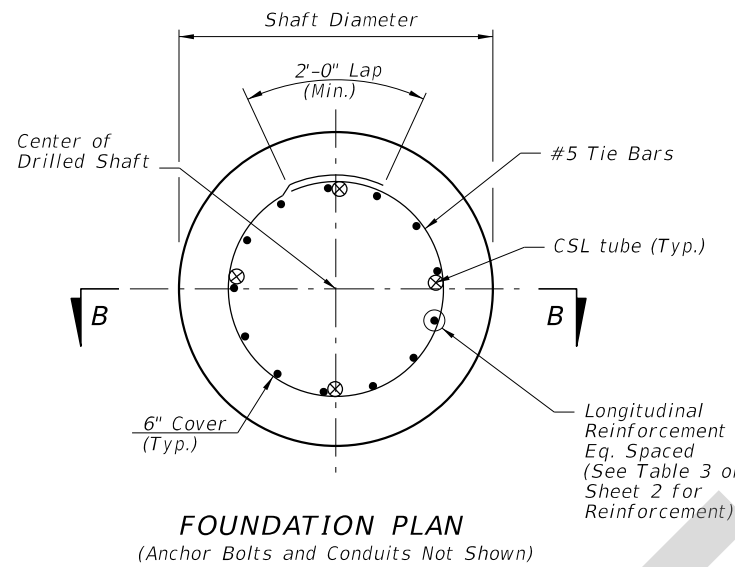


INDEX SHEET
715-010 3 of 6

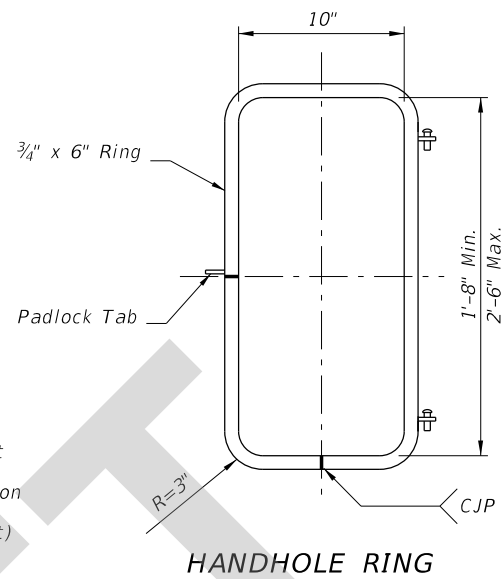
10/4/2023 7:05:01 AM



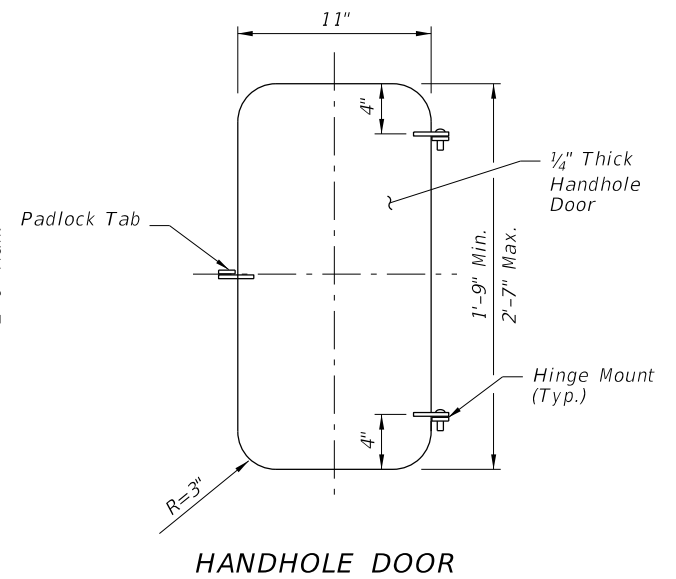
SECTION A-A



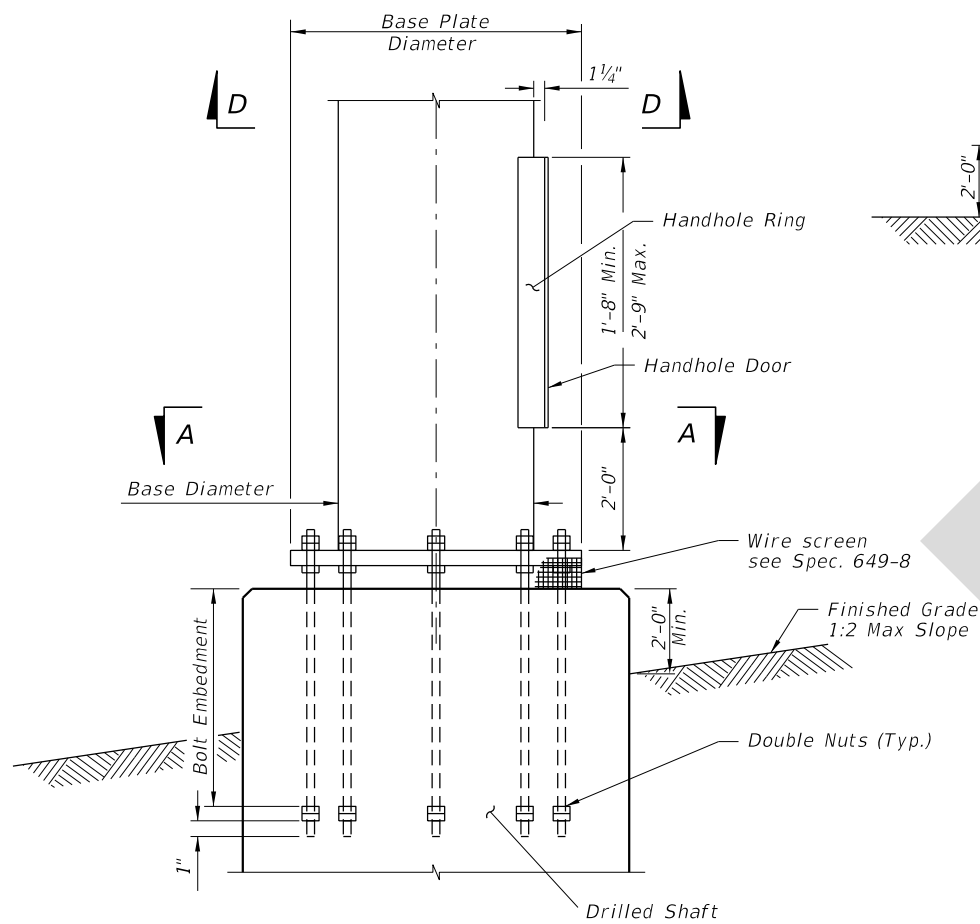
FOUNDATION PLAN
(Anchor Bolts and Conduits Not Shown)



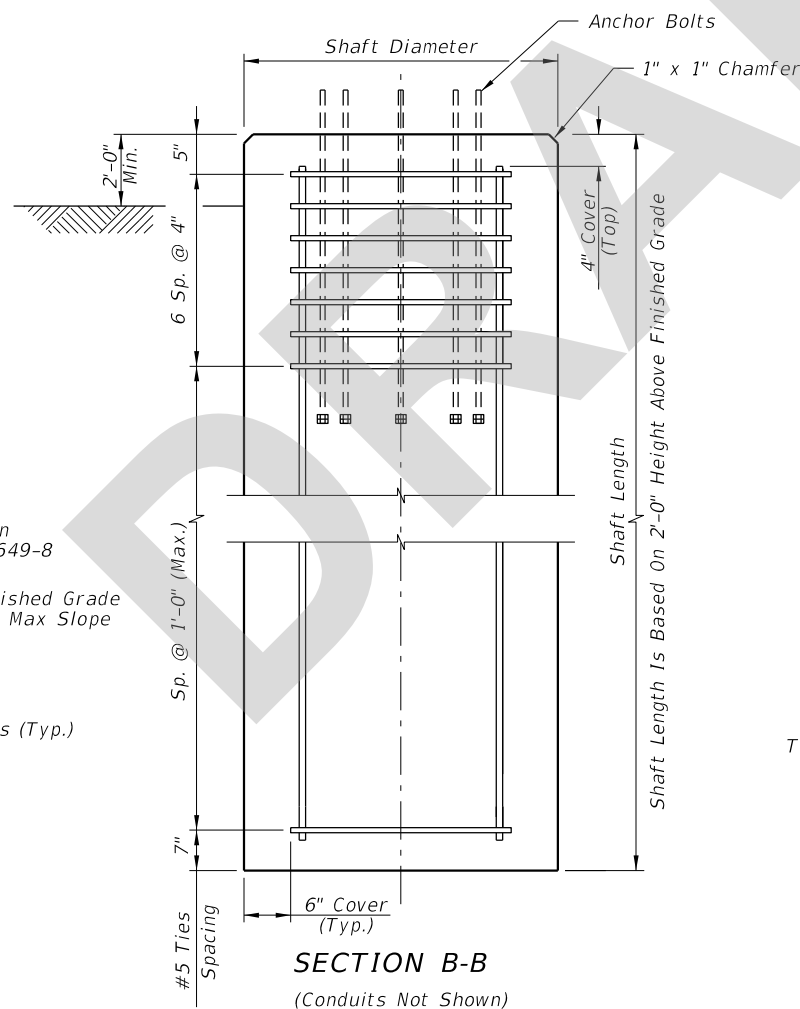
HANDHOLE RING



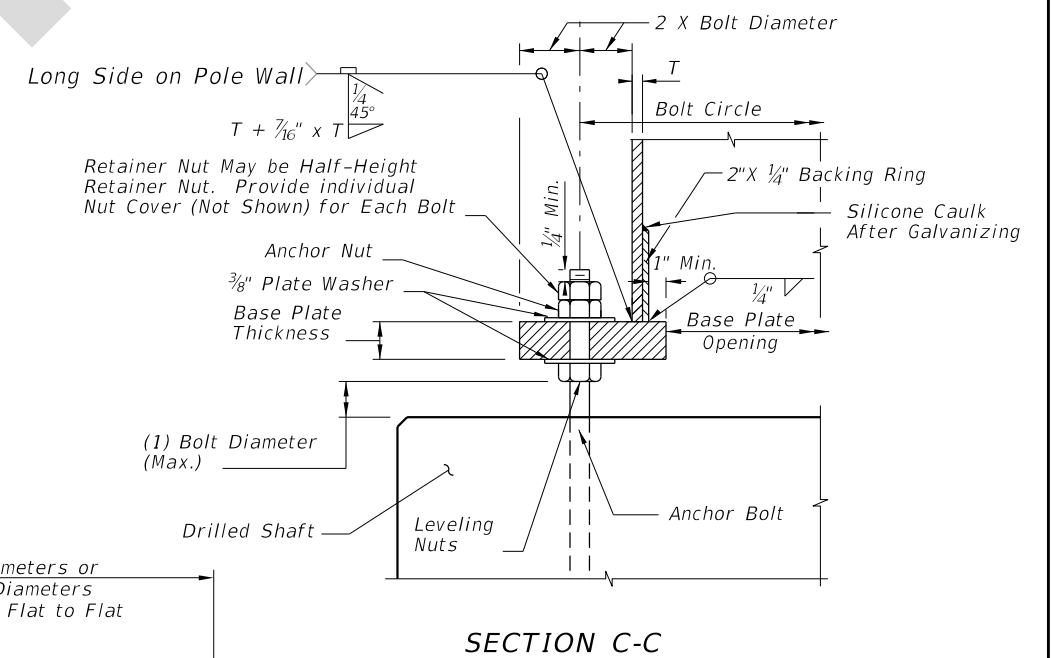
HANDHOLE DOOR



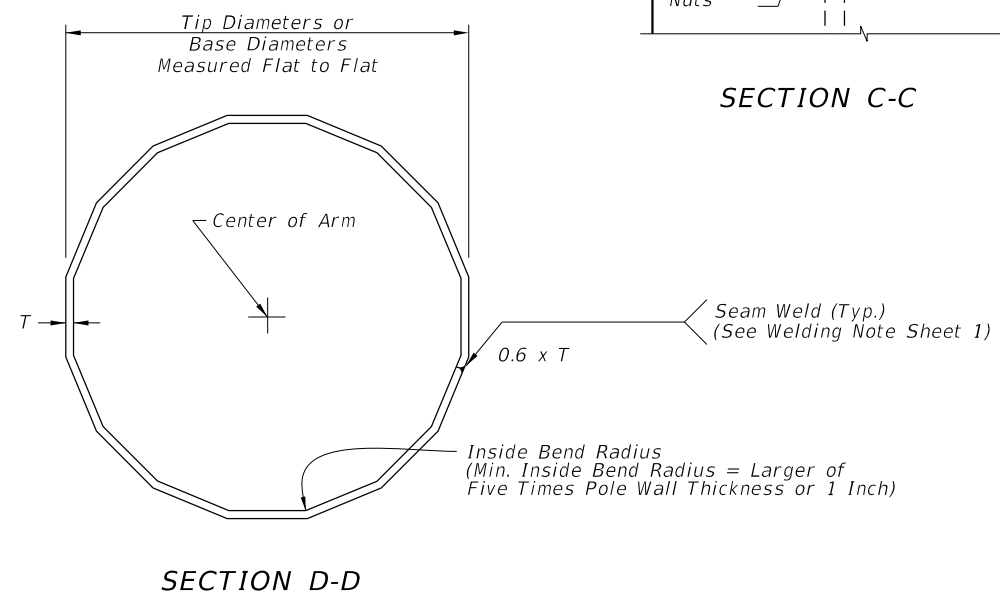
BASE PLATE AND ANCHORAGE ELEVATION
(Conduits Not Shown)



SECTION B-B
(Conduits Not Shown)



SECTION C-C



SECTION D-D

9:04:12 AM
7/12/2024

POLE FOUNDATION

LAST REVISION 11/01/24	DESCRIPTION:
---------------------------	--------------



FY 2025-26
STANDARD PLANS

HIGH MAST LIGHTING

INDEX 715-010	SHEET 3 of 6
------------------	-----------------