
Index 715-003 Utility Conflict Pole

ORIGINATION

Date: 6/14/24

Name: Richard Stepp

Phone: 414-4313

Email: Richard.stepp@dot.state.fl.us

COMMENTARY

As requested by Districts, this new sheet adds another foundation option for Utility Conflict Poles placed in a sidewalk location. This spread footing foundation is similar to the option offered in 715-002. Note that this option is already covered as a "Standard Foundation" and is already included with the existing BOE Pay Item Structure.

COMMENTS AND RESPONSES

BLACK = Industry Review Comments **BLUE** = Standard Plans Response **GREEN** = Change Made to Index

Name: Lou Buenaventura

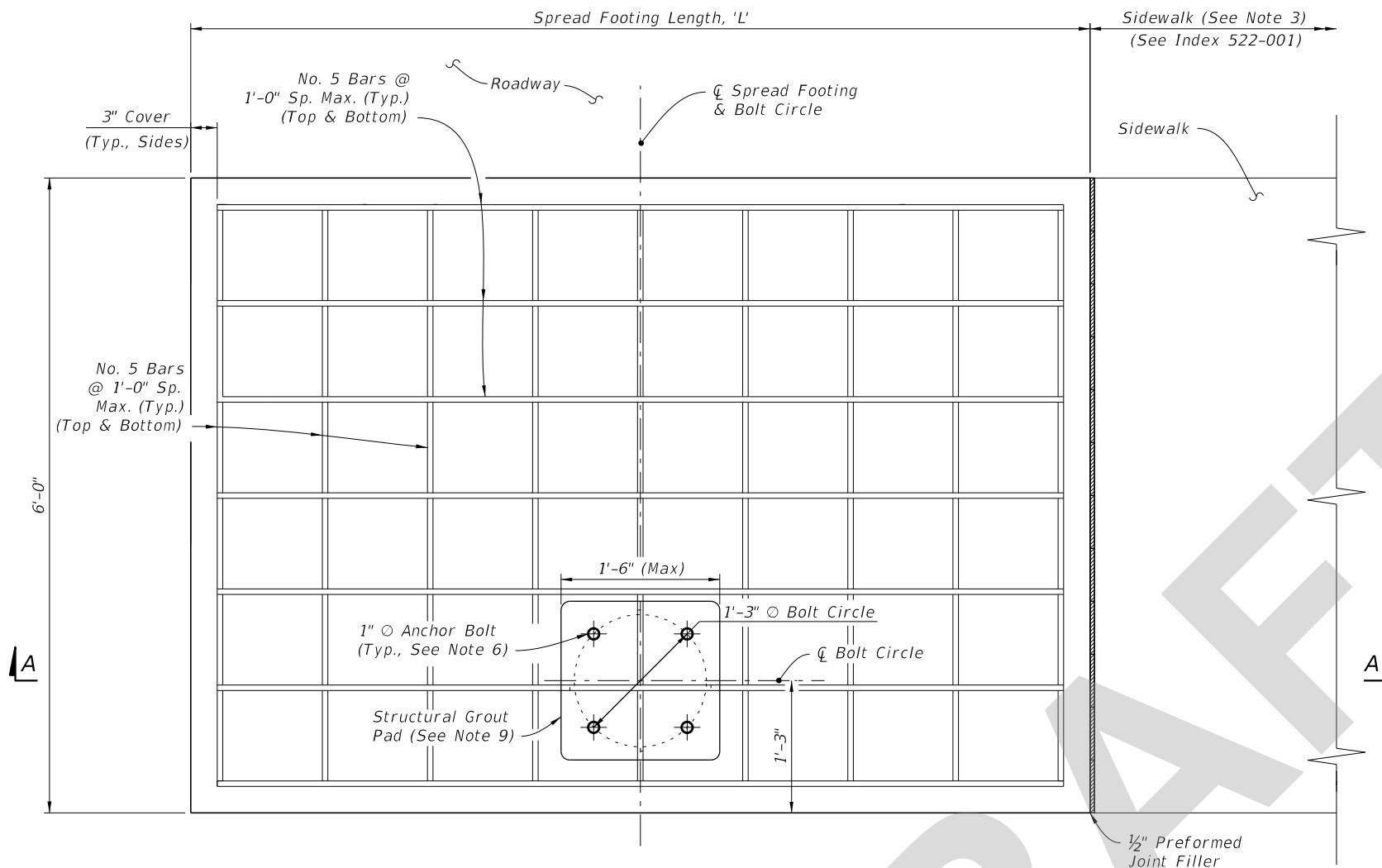
Date: 8/20/24

COMMENT: The proposed index will detail a concrete spread footing foundation option for use on Lighting systems. The words "Cast-in-Place Type II Concrete" has been added to the index, next to Section A-A of Spread Footing foundation. In the past, we have successfully pre-cast these spread footing foundations and installed them in place at the jobsite. Is this new index detail to be interpreted as only Cast-in-place concrete spread footing foundations will be allowed? If pre-cast will still be allowed, we should state so in the notes.

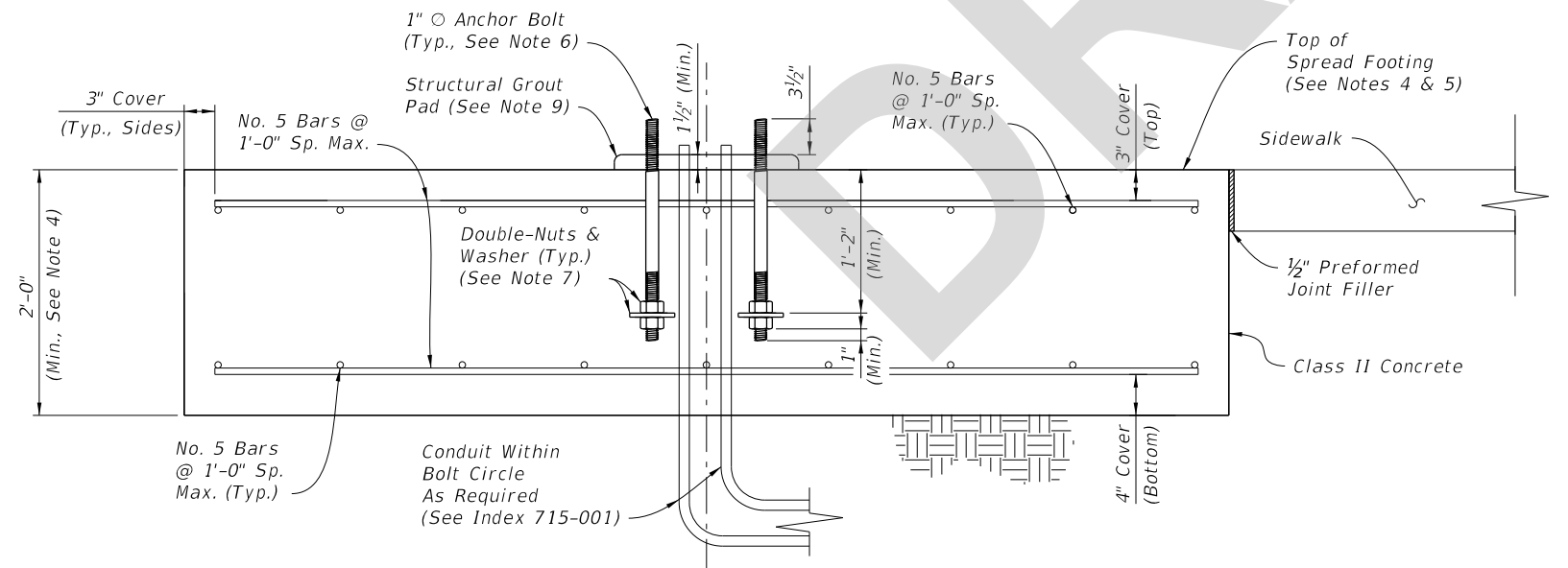
RESPONSE: Cast-in-place was selected because this spread footing has a secondary function of continuing the sidewalk and matching the adjacent sidewalk slope (while also keeping the bottom level). That said, it's understood that this may be achieved with pre-casting, so "Cast-in-place" will be removed to allow for all options.

CHANGE MADE TO INDEX: Yes, "cast-in-place" removed.

Response Date: 8/23/24



PLAN - SPREAD FOOTING FOUNDATION



SECTION A-A - SPREAD FOOTING FOUNDATION ELEVATION

SPREAD FOOTING LENGTH, 'L'			
Mounting Height (Ft.)	Wind Speed (All Arm Lengths)		
	120 mph	140 mph	160 mph
20	4'-6"	5'-0"	6'-0"
25	4'-6"	5'-0"	6'-0"
30	7'-0"	7'-0"	7'-0"
35	7'-0"	7'-0"	7'-0"
40	7'-0"	7'-0"	10'-0"
45	8'-6"	10'-0"	10'-0"
50	8'-6"	10'-0"	11'-6"

NOTES:

1. Install the Spread Footing Foundation Option only where called for in the Plans.
2. The Spread Footing Foundation Option is only permitted for use with single arm light poles. The pole arm must be oriented towards the roadway side of the footing as shown.
3. Sidewalk placed on the other side or both sides of the spread footing is permitted where shown in the Plans. The sidewalk connection to spread footing requires the 1/2" expansion joint shown regardless of the side.
4. The top of the spread footing must match the cross slope of the adjacent sidewalk where applicable per the Plans. The nominal bottom of the spread footing must remain level.
5. Apply concrete surface finish to the top of the spread footing in accordance with Specification 522-7.
6. Mount the anchor bolts plumb. For the corresponding pole base details, see Sheet 3.
7. Place galvanized or zinc-plated steel washers with a minimum thickness of 1/4". Use washers with a minimum size of 3 1/2" O round or 3"x3" square.
8. Where raised curb is called for in the Plans, provide a tooled cold joint with bond breaker between the foundation and back of raised curb. See Sheet 1 and the connection between concrete sidewalk and raised curb per Index 522-001.
9. Place a structural grout pad in accordance with Specification 934. The grout pad is square and centered on the bolt circle centerlines. Level the top of the grout pad and smooth the edges and corners per the approval of the Engineer. Install the transformer base in accordance with Sheet 3 and the manufacturer's specifications.

SPREAD FOOTING FOUNDATION OPTION

8/23/2024 12:05:06 PM