
Index 715-002 Standard Aluminum Lighting

ORIGINATION

Date: 2/6/24

Name: Richard Stepp and Joshua Turley

Phone: 414-4313

Email: Richard.stepp@dot.state.fl.us

COMMENTARY

There is an associated Spec change being drafted for Section 649 that pertains to process for tightening the anchor bolts. These changes make it so that the language aligns between the Spec and the Standard

COMMENTS AND RESPONSES

BLACK = Industry Review Comments **BLUE** = Standard Plans Response **GREEN** = Change Made to Index

Name: Lou Buenaventura

Date: 8/20/24

COMMENT: On Sheet 5 of 9, the proposed index will detail a concrete spread footing foundation option for use on Lighting systems. The words “Cast-in-Place Type II Concrete” has been added to Sheet 5 of 9 of the index, next to Section A-A of Spread Footing foundation. In the past, we have successfully pre-cast these spread footing foundations and installed them in place at the jobsite. Is this new index detail to be interpreted as only Cast-in-place concrete spread footing foundations will be allowed? If pre-cast will still be allowed, we should state so in the notes.

RESPONSE: Cast-in-place was selected because this spread footing has a secondary function of continuing the sidewalk and matching the adjacent sidewalk slope (while also keeping the bottom level). That said, it's understood that this may be achieved with pre-casting, so “Cast-in-place” will be removed to allow for all options.

CHANGE MADE TO INDEX: Yes, “Cast-in-place” removed.

Response Date: 8/23/24

Name: Pete Trevin

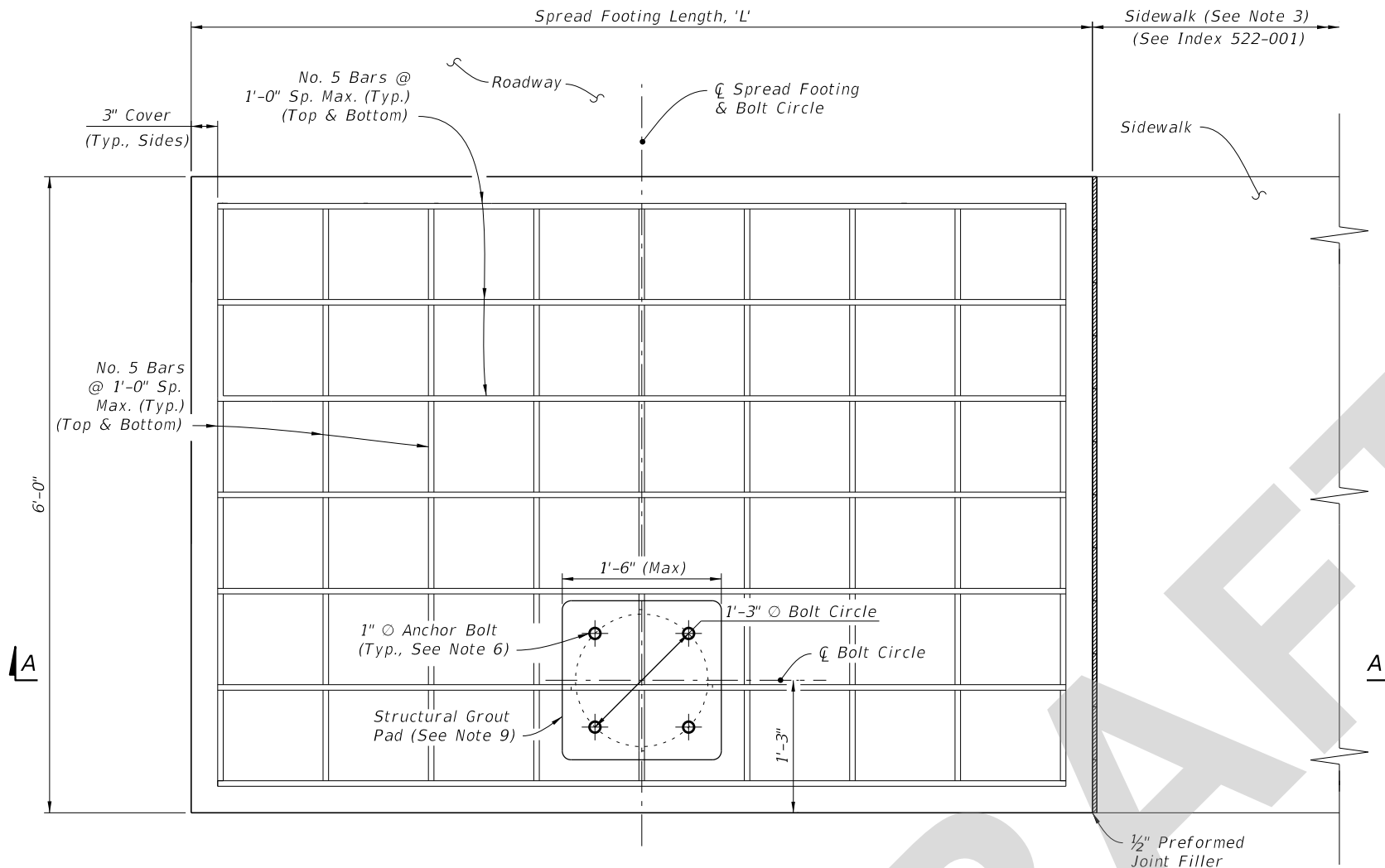
Date: 8/29/24

COMMENT: Sheet 5, Note 2 states "double-arm configurations are not permitted" - clarify that this statement is for ground-mounted poles. Recommend adding a clarification note to refer to Sheet 7 for the spread footing foundation on median-mounted poles.

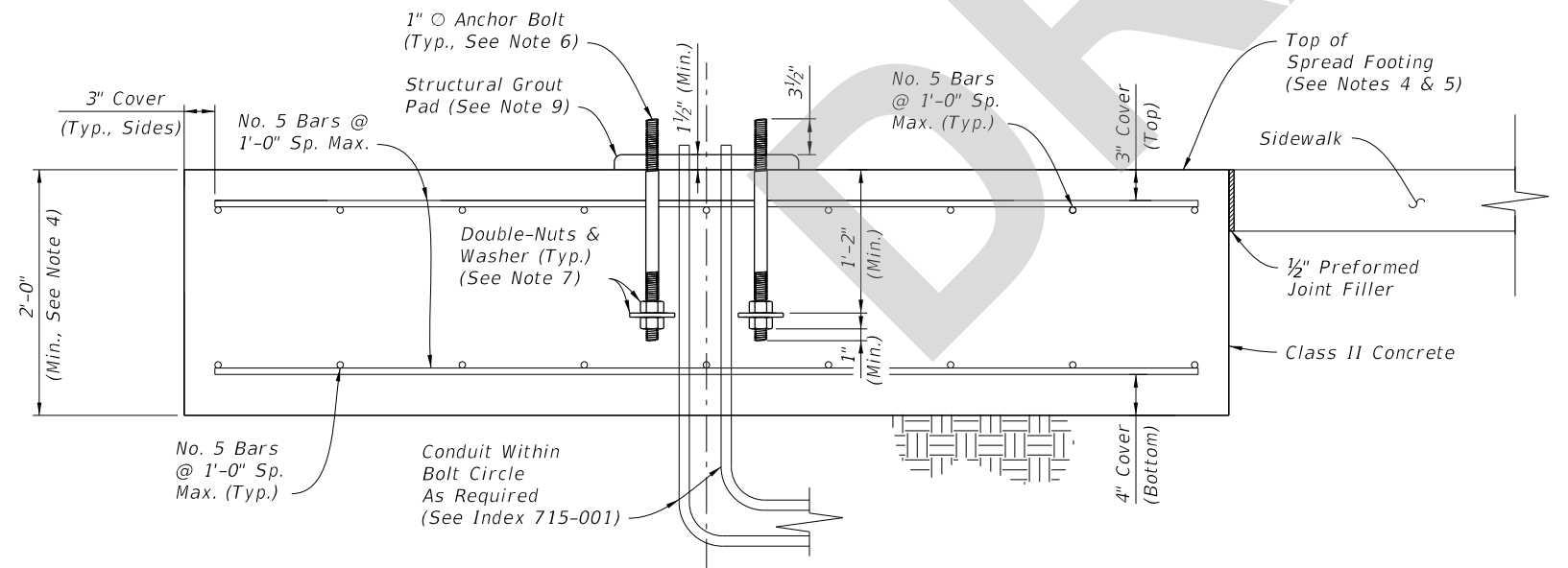
RESPONSE: This comment is unrelated to the proposed revisions, so it's outside the scope of review for this publication cycle. Additionally, unlike the "General Notes" listed on Sheet 1, the "Notes" listed on later sheets typically apply to the sheet they are written on, and that's why they're placed that way. For this case, Note 2 on Sheet 5 specifically refers to the "Spread Footing Foundation Option" (capitalized term), which is the identical term used on both the Plan view definition and the title for that same sheet. So, the Sheet 5 note is clearly referring to a different topic and structure than what is shown on Sheet 7 (by title and all other context). Last, the spread footing with a median barrier is also shown on Sheet 2 with a double-arm pole on top, so double-arm is simply allowable for that same barrier setup shown on Sheet 7.

CHANGE MADE TO INDEX: No Change

Response Date: 9/4/24



PLAN - SPREAD FOOTING FOUNDATION



SECTION A-A - SPREAD FOOTING FOUNDATION ELEVATION

| SPREAD FOOTING LENGTH, 'L' | | | |
|----------------------------|------------------------------|---------|---------|
| Mounting Height (Ft.) | Wind Speed (All Arm Lengths) | | |
| | 120 mph | 140 mph | 160 mph |
| 20 | 4'-6" | 5'-0" | 6'-0" |
| 25 | 4'-6" | 5'-0" | 6'-0" |
| 30 | 7'-0" | 7'-0" | 7'-0" |
| 35 | 7'-0" | 7'-0" | 7'-0" |
| 40 | 7'-0" | 7'-0" | 10'-0" |
| 45 | 8'-6" | 10'-0" | 10'-0" |
| 50 | 8'-6" | 10'-0" | 11'-6" |

NOTES:

1. Install the Spread Footing Foundation Option only where called for in the Plans.
2. The Spread Footing Foundation Option is only permitted for use with single arm or top mount light poles. Where applicable, the pole arm must be oriented towards the roadway side of the footing as shown. Double arm configurations are not permitted.
3. Sidewalk placed on the other side or both sides of the spread footing is permitted where shown in the Plans. The sidewalk connection to spread footing requires the 1/2" expansion joint shown regardless of the side.
4. The top of the spread footing must match the cross slope of the adjacent sidewalk where applicable per the Plans. The nominal bottom of the spread footing must remain level.
5. Apply concrete surface finish to the top of the spread footing in accordance with Specification 522-7.
6. Mount the anchor bolts plumb. For the corresponding pole base details, see Sheet 4.
7. Place galvanized or zinc-plated steel washers with a minimum thickness of 1/4". Use washers with a minimum size of 3 1/2" O round or 3"x3" square.
8. Where raised curb is called for in the Plans, provide a tooled cold joint with bond breaker between the foundation and back of raised curb. See Sheet 2 and the connection between concrete sidewalk and raised curb per Index 522-001.
9. Place a structural grout pad in accordance with Specification 934. The grout pad is square and centered on the bolt circle centerlines. Level the top of the grout pad and smooth the edges and corners per the approval of the Engineer. Install the transformer base in accordance with Sheet 4 and the manufacturer's specifications.

SPREAD FOOTING FOUNDATION OPTION

8/23/2024 12:03:04 PM