
Index 649-031 Mast Arm Assemblies

ORIGINATION

Date: 2/6/2024

Name: Joshua Turley

Phone: 414-4475

Email: Joshua.turley@dot.state.fl.us

COMMENTARY

There is an associated Spec change being drafted for Section 649 that pertains to process for tightening the anchor bolts. These changes make it so that the language aligns between the Spec and the Standard. Removed weld hatches to make consistent with the rest of the Standards and also industry convention.

COMMENTS AND RESPONSES

BLACK = Industry Review Comments **BLUE** = Standard Plans Response **GREEN** = Change Made to Index

Name: Halim Bas

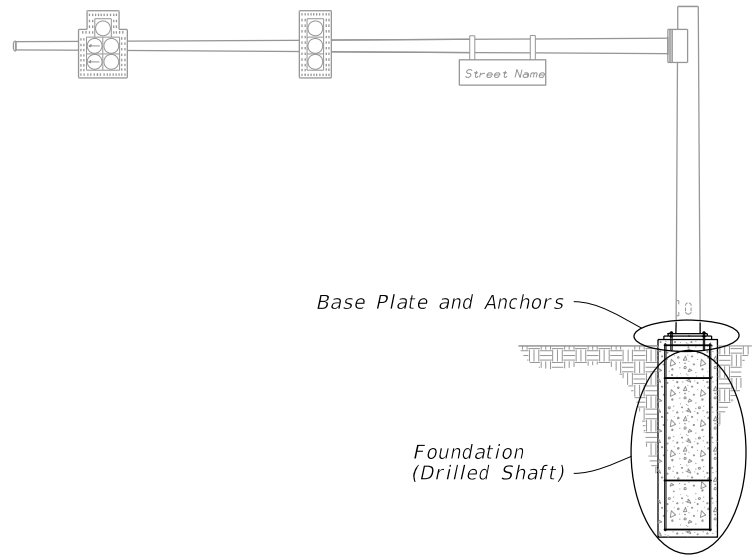
Date: 7/18/2024

COMMENT: There is a dimension for the welding hatch that is still in place. It needs to be removed. The unequal leg sizes of the reinforcement weld are shown next to the bevel symbol. This should be aligned with the reinforcement fillet, and parentheses should not be used. This is confusing. Parentheses are reserved for weld size of groove welds. Since there is an x sign, I do not see any ambiguity in the way "T + 7/16" will be interpreted. Simply put "T+7/16 x T". With a tail note that reads "T LEG ON BASE PLATE". This is the guidance in ASTM A2.4 item 5.2.2 and Figure 32(D).

RESPONSE: Good catch. We will update accordingly.

CHANGE MADE TO INDEX: Updated Sheet 2 to take off the dimension and clarify the callouts.

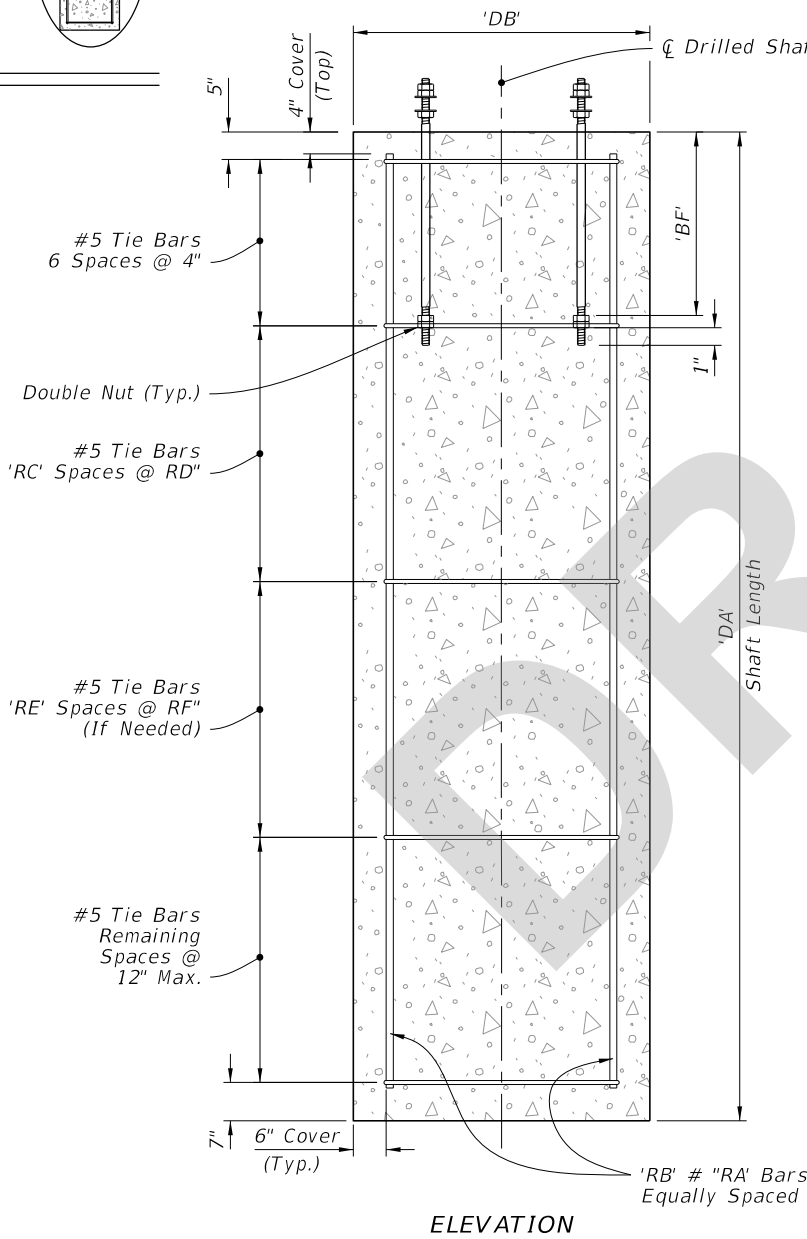
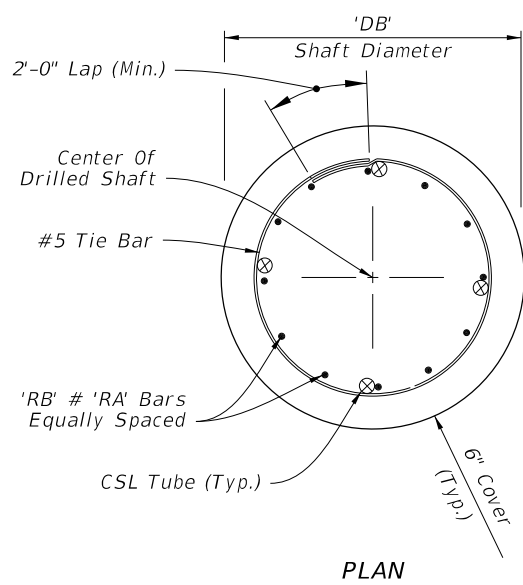
Response Date: 7/24/2024



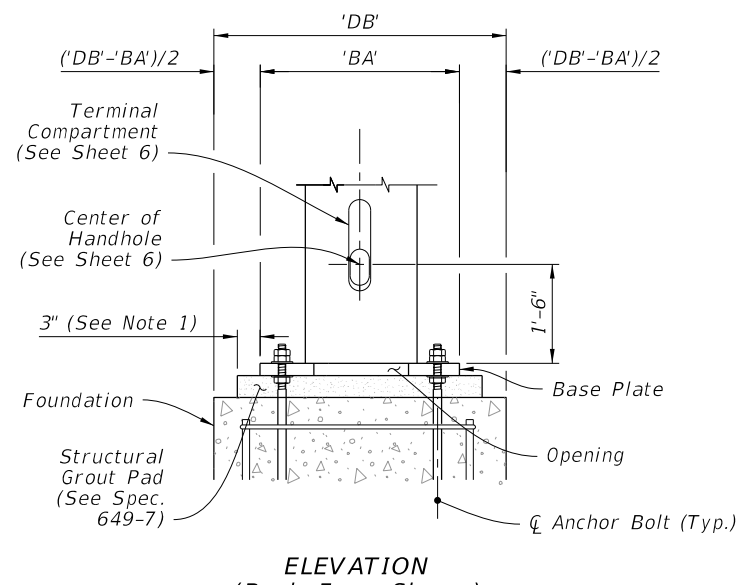
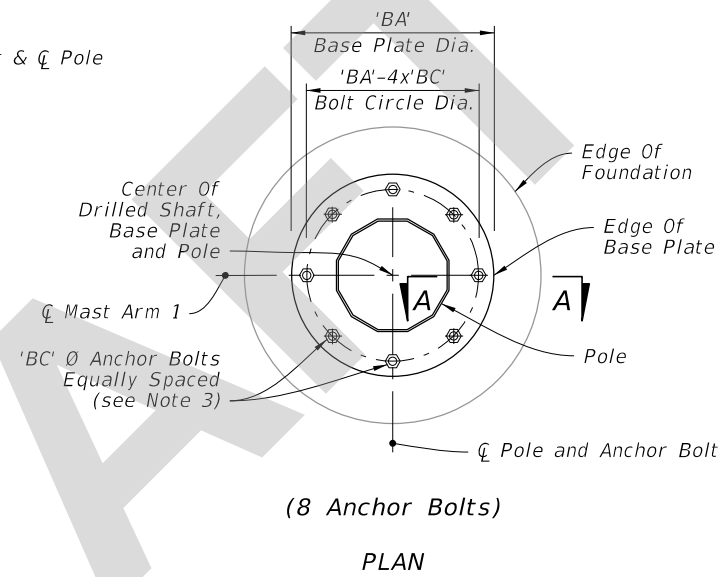
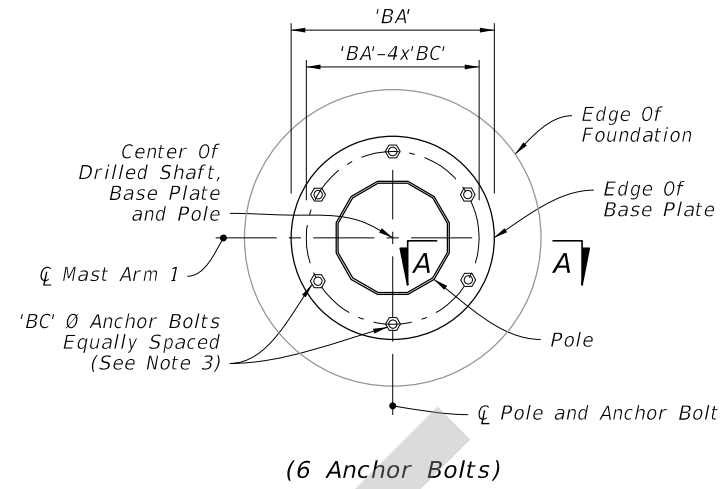
MAST ARM ASSEMBLY

NOTES:

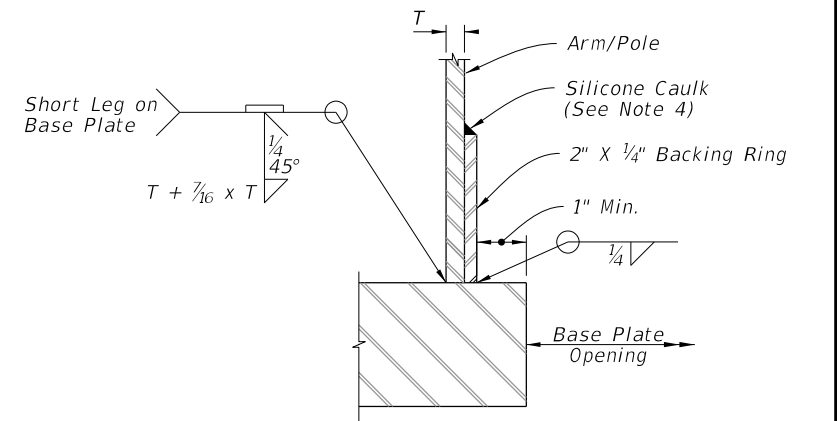
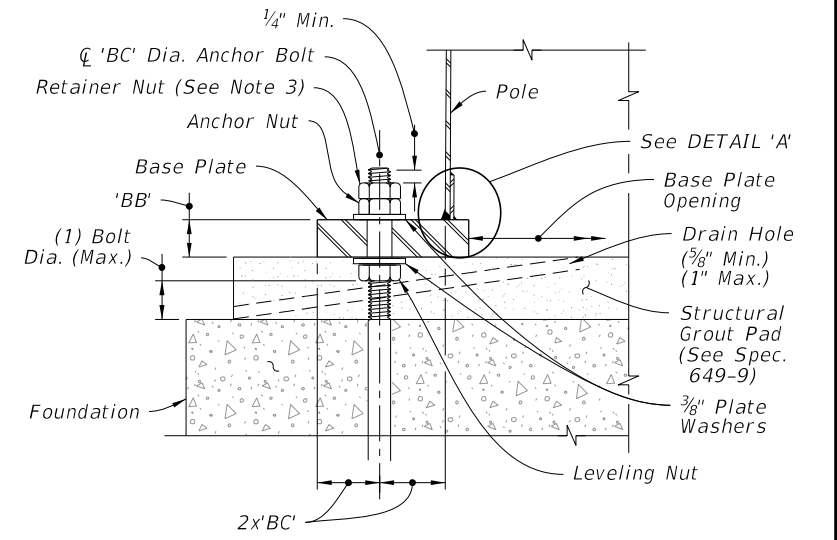
1. The Structural Grout Pad diameter may be reduced where the footprint of the Grout Pad does not provide adequate clearance for the sidewalk and/or accessibility considerations.
2. See Index 649-030 and the plans for actual quantity of bolts in the Base Plate Connection.
3. The retainer nut shown in Section A-A may be half-height. Provide individual nut covers (not shown) for each bolt.
4. Detail 'A' Silicone Caulk may be applied after installation. Consult with Manufacturer to determine the suitability of the caulk to be applied.



FOUNDATION



BASE PLATE CONNECTION



JOINT WELD DETAIL

DETAIL 'A'

FOUNDATION AND BASE PLATE DETAILS

7/31/2024 9:04:06 AM

LAST REVISION 11/01/24	REVISION	DESCRIPTION:
---------------------------	----------	--------------



FY 2025-26
STANDARD PLANS

MAST ARM ASSEMBLIES

INDEX
649-031

SHEET
2 of 6