

Origination Form

Proposed Revisions to a Standard Plans Index

Originator:	Turley, Joshua	Index Number:	649-020
Date:	4/17/2024	Sheet Number(s):	3 and 4
E-mail:	Joshua.Turley@dot.state.fl.us	Index Title:	STEEL CCTV POLE

Summary of the changes:

Sheet 3: Section A-A -- Corrected the label order of the anchor bolt nuts; SECTION B-B -- Modified wall thickness from text to symbol. DETAIL A -- Removed weld hatches and modified weld symbol. Removed "Pole Wall Thickness + 7/16" dimension from Joint Weld Detail. Added welding callout to Joint Weld Detail.
 Sheet 4: FRAME DETAIL -- Modified weld detailing and modified title; SECTION C-C -- Modified weld detailing; Updated callouts and added dimensions to Rod and Eye Bolt Options.

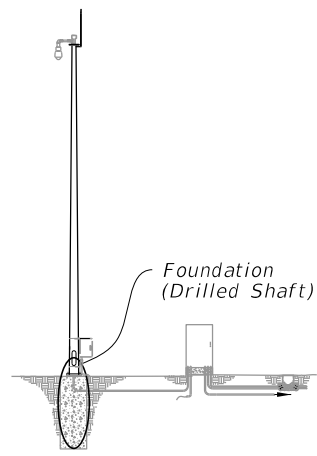
Commentary/Background:

Sheet 3: Anchor nut labels were adjusted to correspond correctly with upcoming associated Spec change being drafted for Section 649; We corrected weld detailing for clarity and brevity.
 Sheet 4: We corrected weld detailing to conform with accepted convention.

Other Affected Documents/Offices	Person Contacted	Affected (Yes/No)
Other Standard Plans		No
FDOT Design Manual		No
Standard Specifications		No
Basis of Estimates Manual		No
Approved Product List		No
Construction Office		No
Maintenance Office		No

Implementation

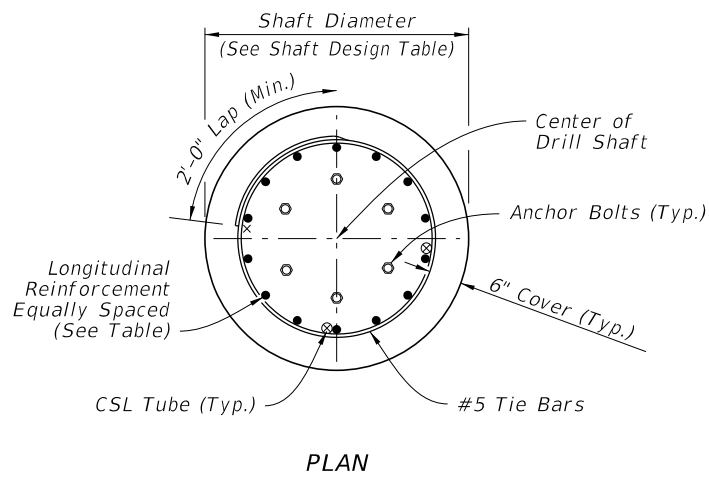
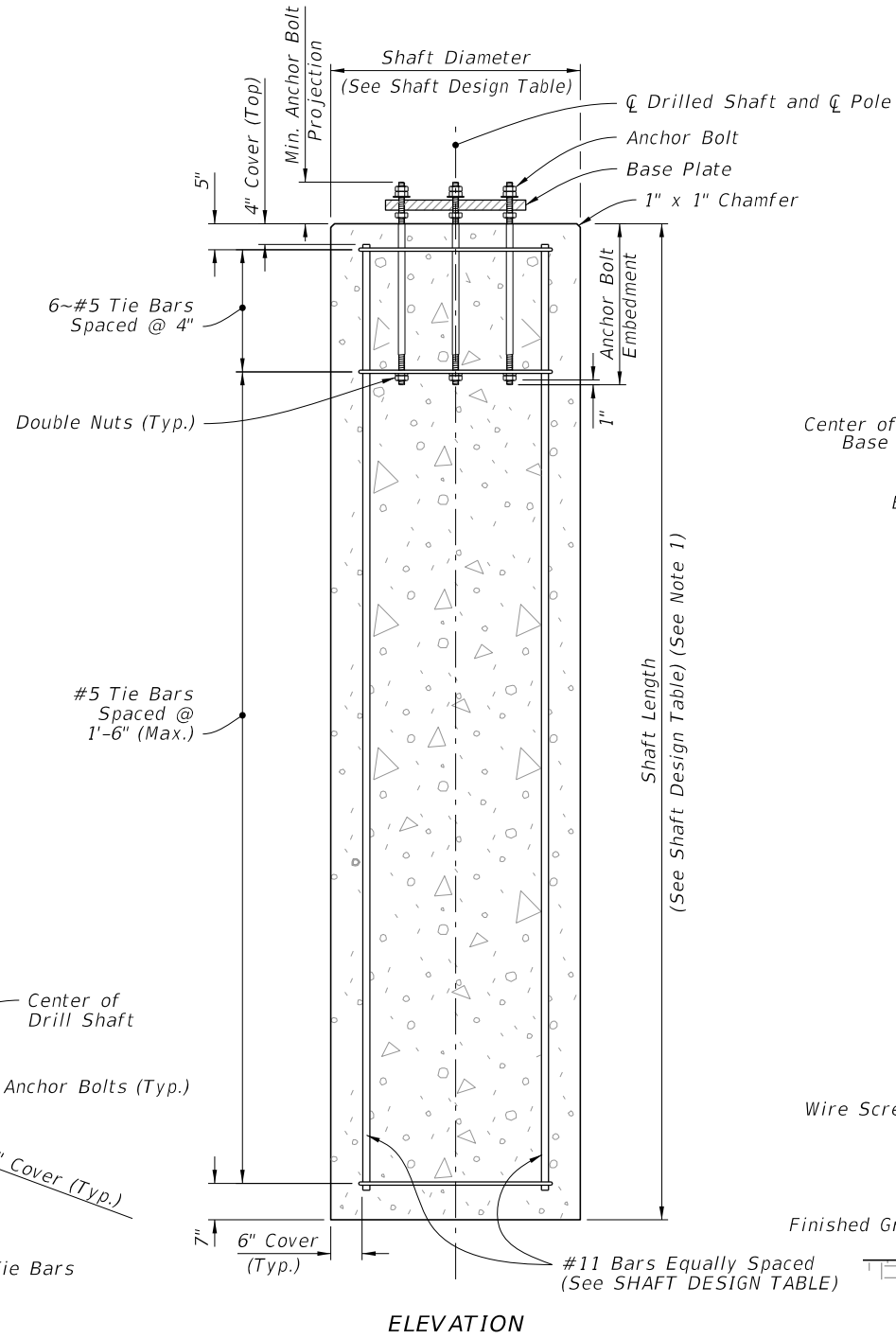
["FY-Standard Plans (Next Release)"]



ASSEMBLY

NOTES:

1. Shaft Length is based on 1'-0" height above the finished grade.
2. Retainer nut may be half-height. Provide individual nut covers (not shown) for each bolt.
3. Conduit and CSL Tubes not shown for clarity.
4. Work these details with Data Table on Sheet 2.

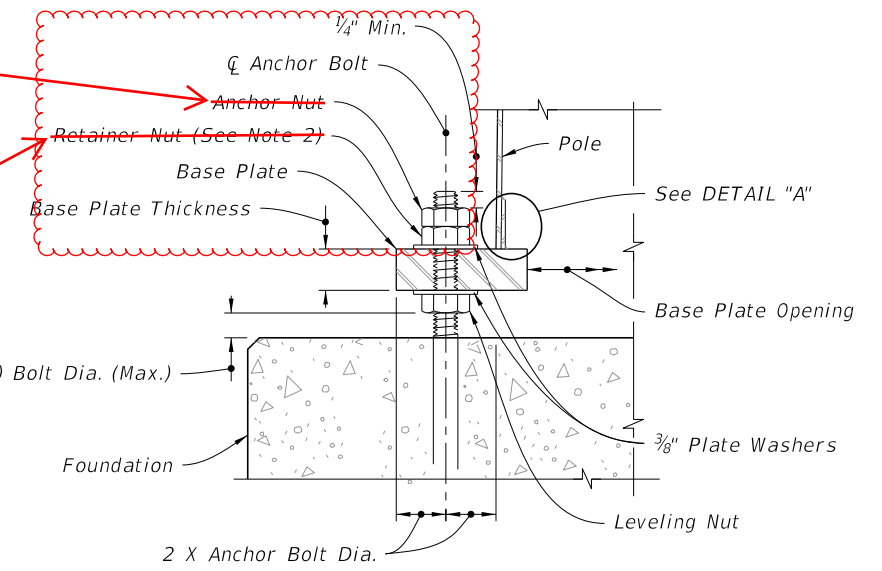


PLAN

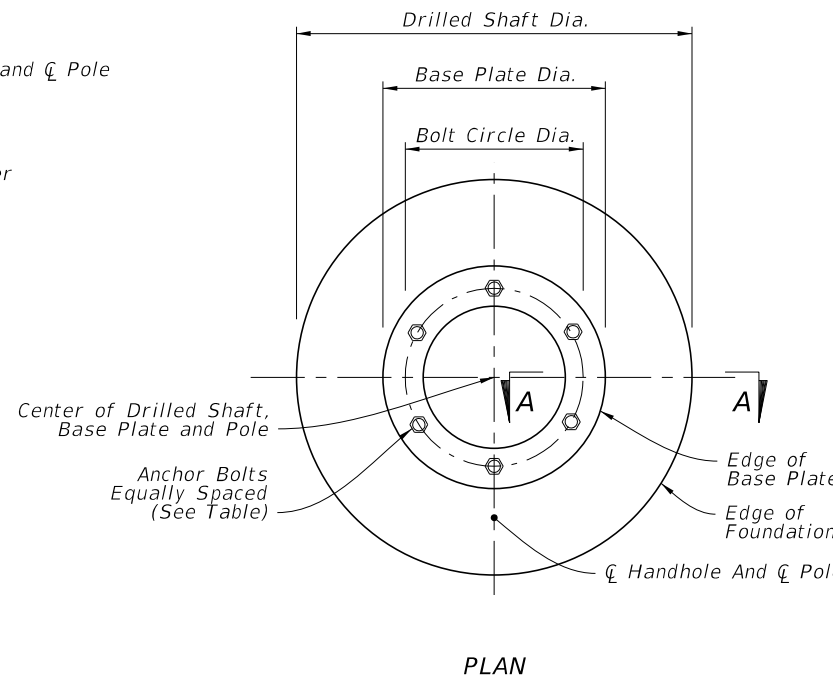
FOUNDATION

REVISED: Retainer Nut (See Note 2)

REVISED: Anchor Nut

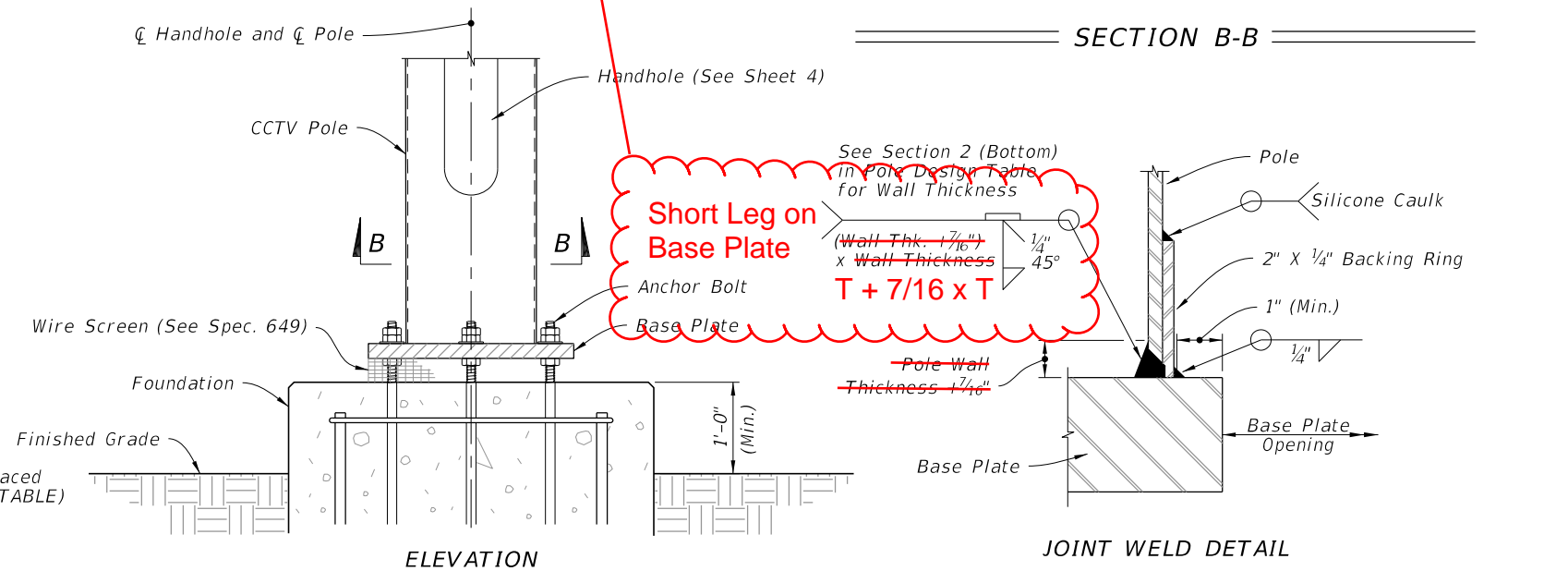


SECTION A-A



PLAN

UPDATED Callouts



ELEVATION

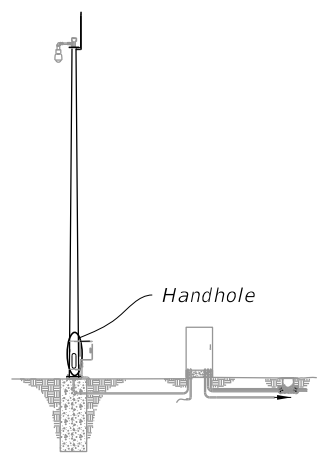
BASE PLATE

JOINT WELD DETAIL

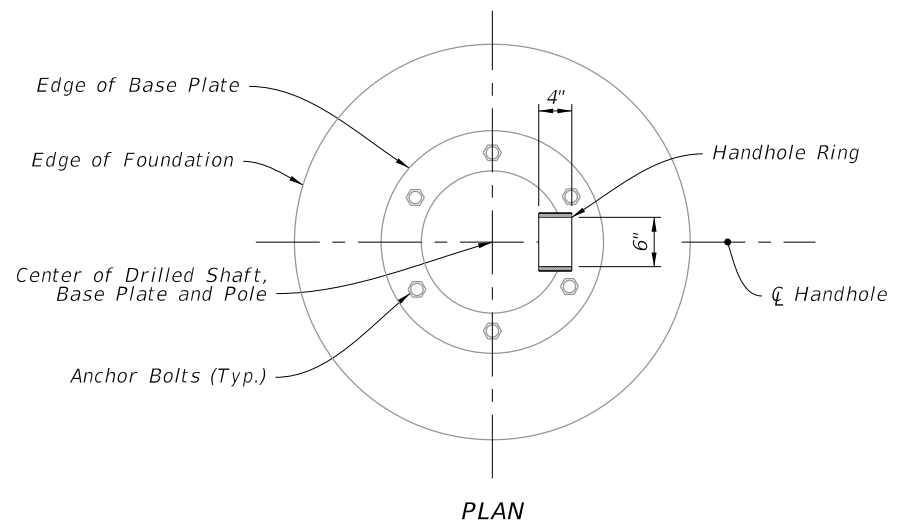
DETAIL "A"

10/3/2023 2:19:54 PM

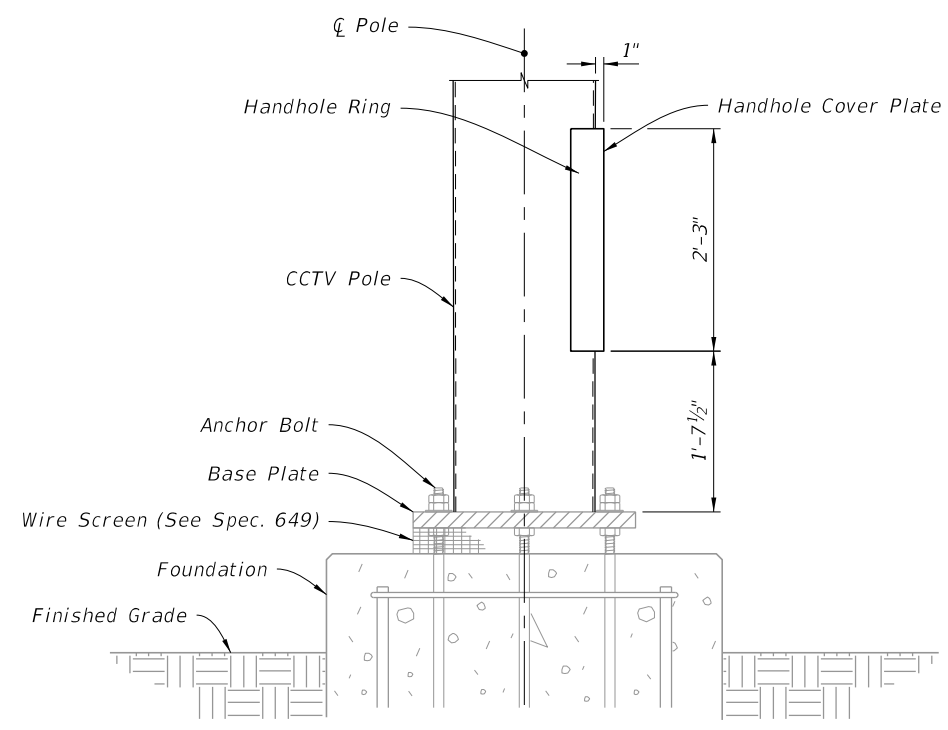
LAST REVISION	DESCRIPTION:
11/01/23 11/01/24	



ASSEMBLY

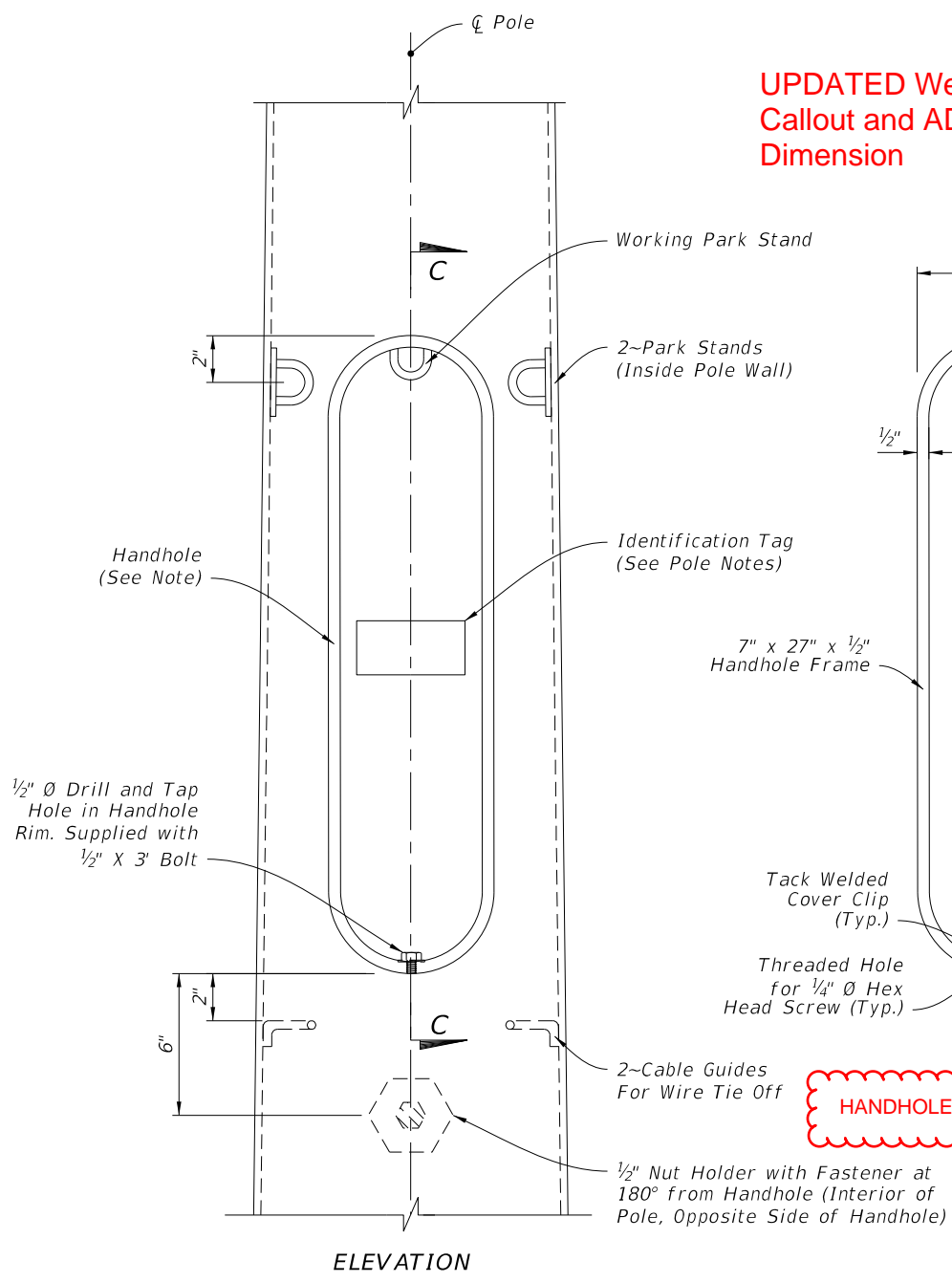


PLAN



ELEVATION

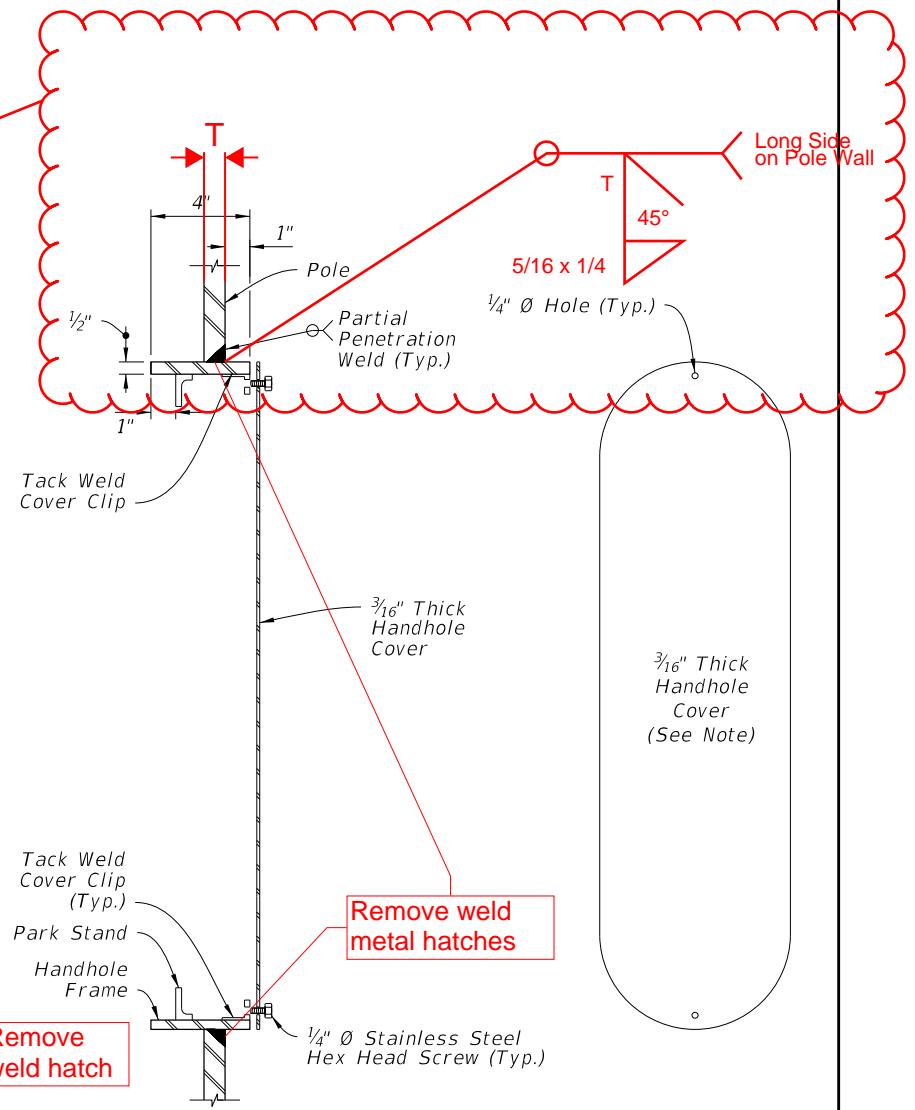
HANDHOLE LOCATION



ELEVATION

HANDHOLE FRAME

UPDATED Weld Callout and ADDED Dimension



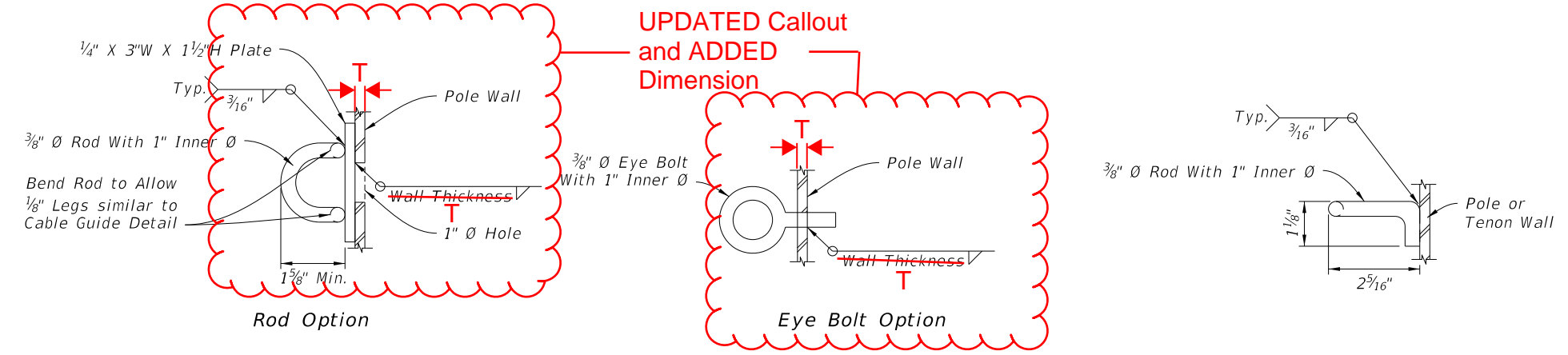
SECTION C-C

COVER PLATE

NOTE:

To secure the cover plate, install a steel chain from the cover to the pole or by mounting the cover with hinges and install a pad lock tab.

HANDHOLE DETAIL



Rod Option

Eye Bolt Option

PARK STAND DETAILS

CABLE GUIDE DETAIL

10/3/2023 2:20:01 PM

LAST REVISION	DESCRIPTION:
11/01/23	
11/01/24	

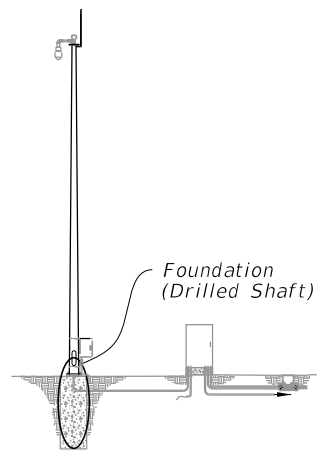


FY 2024-25
STANDARD PLANS

STEEL CCTV POLE

INDEX
649-020

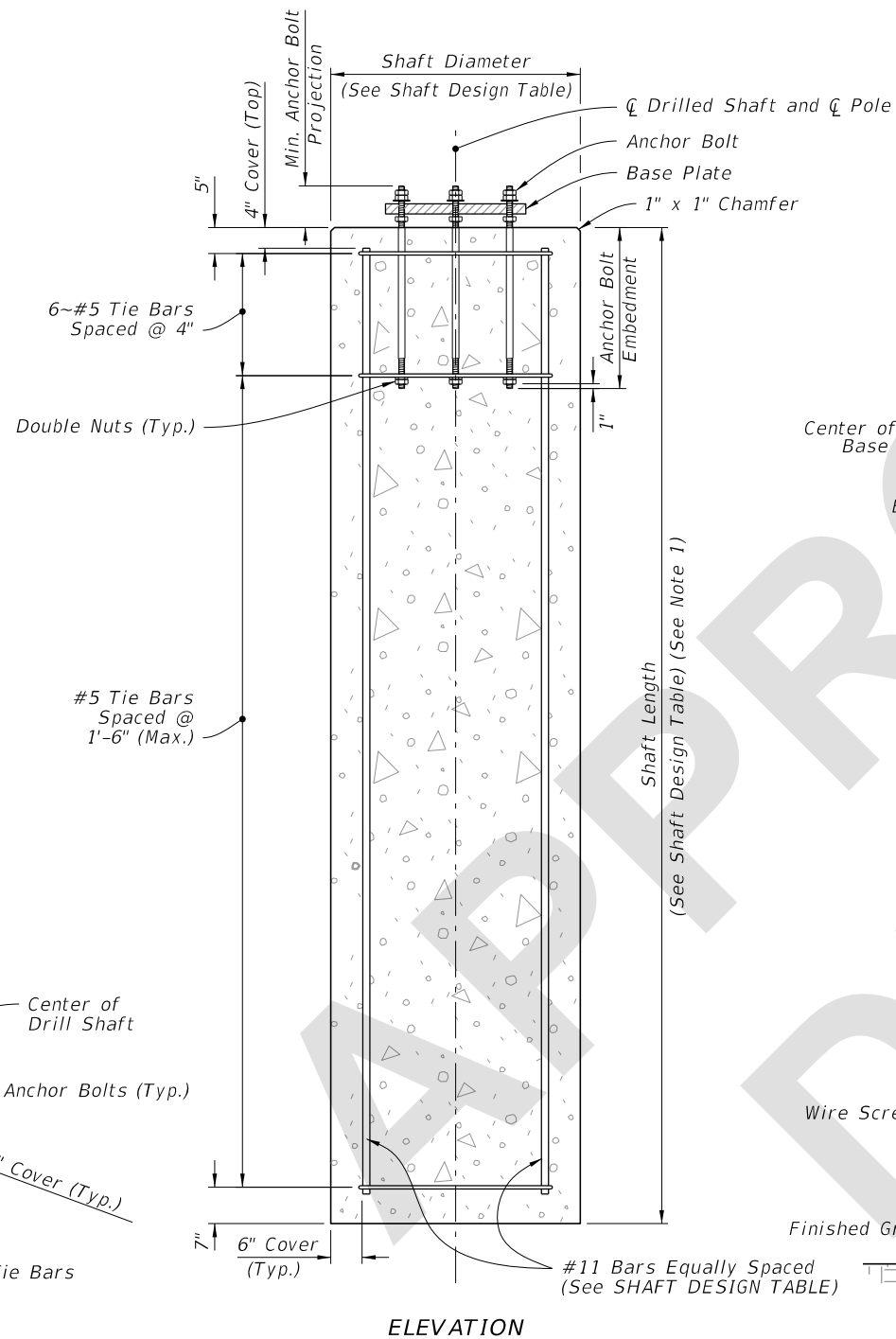
SHEET
4 of 6



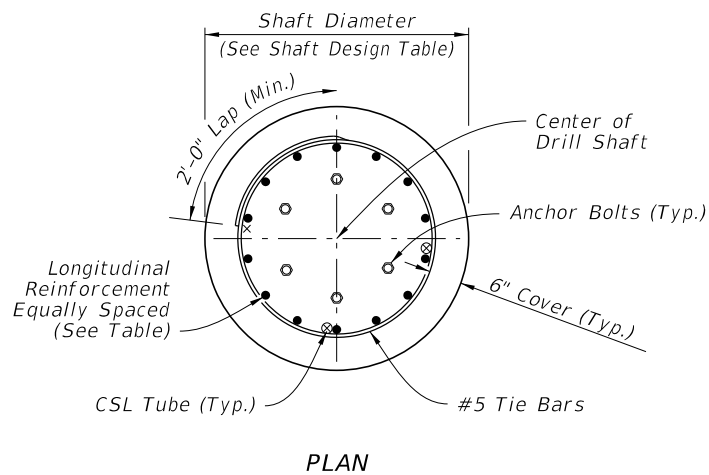
ASSEMBLY

NOTES:

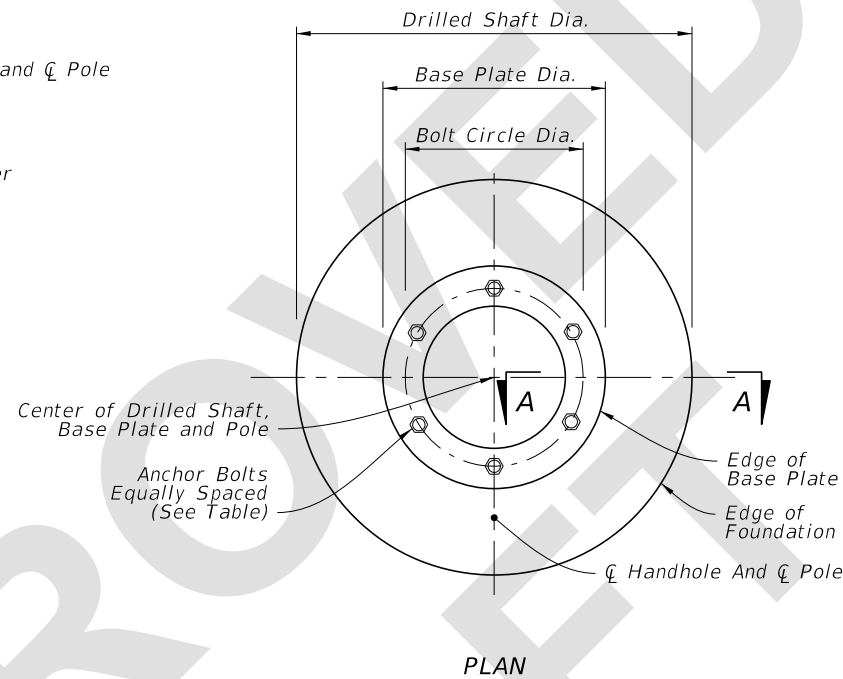
1. Shaft Length is based on 1'-0" height above the finished grade.
2. Retainer nut may be half-height. Provide individual nut covers (not shown) for each bolt.
3. Conduit and CSL Tubes not shown for clarity.
4. Work these details with Data Table on Sheet 2.



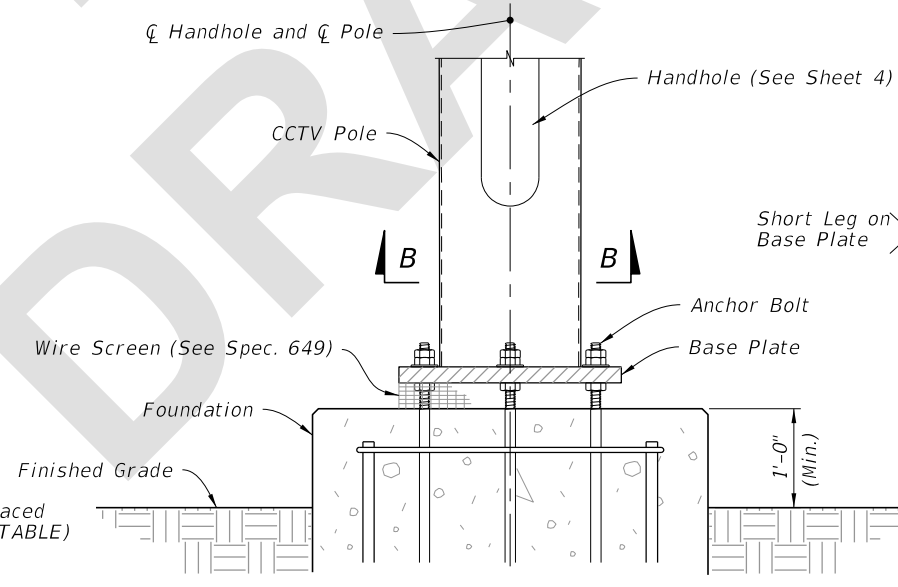
ELEVATION



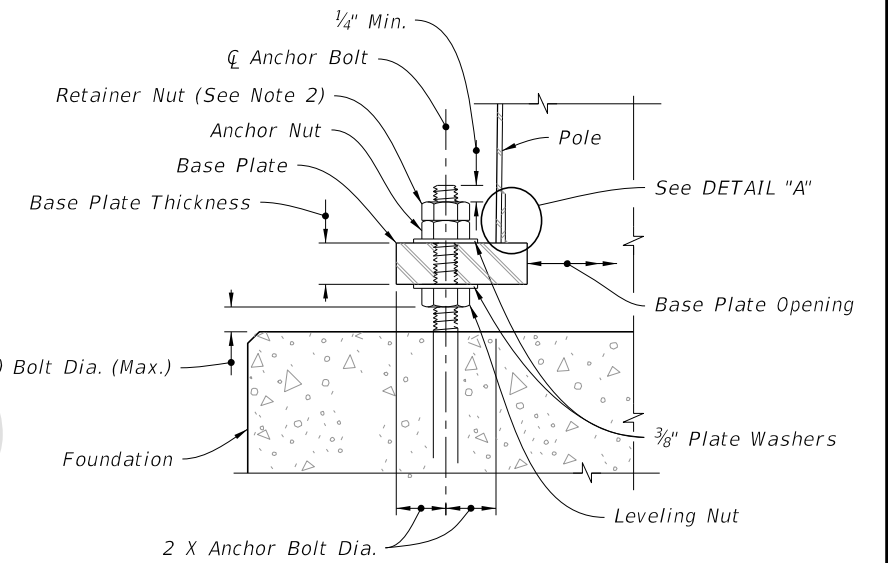
PLAN



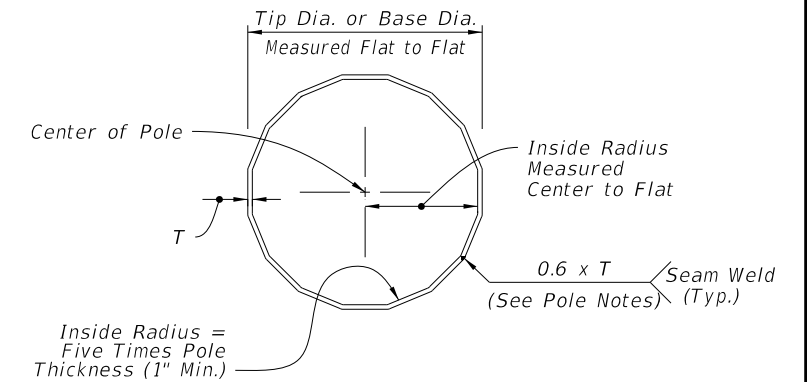
PLAN



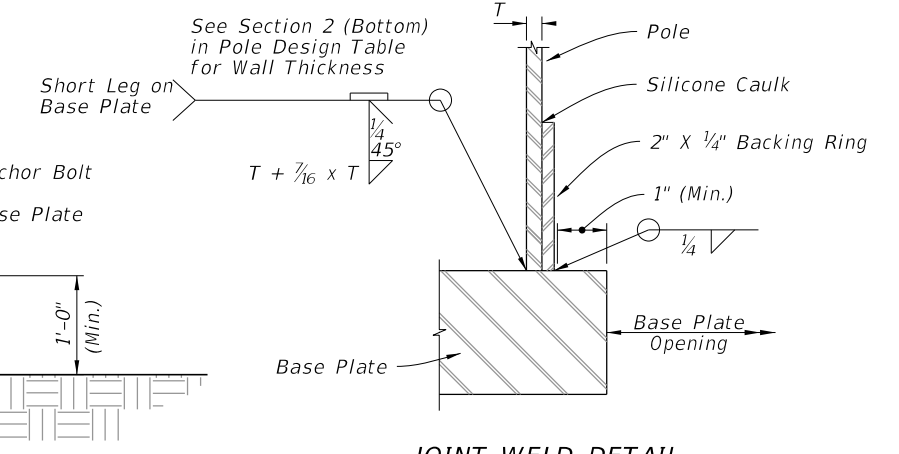
ELEVATION



SECTION A-A



SECTION B-B



JOINT WELD DETAIL

FOUNDATION

BASE PLATE

DETAIL "A"

7/31/2024 9:47:47 AM

LAST REVISION 11/01/24	DESCRIPTION:
---------------------------	--------------

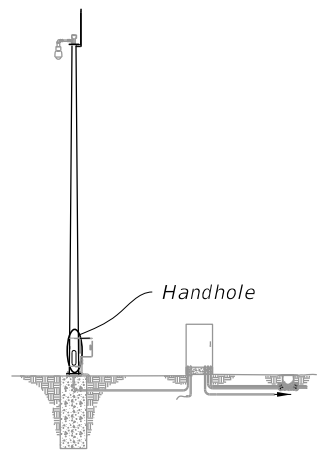


FY 2025-26
STANDARD PLANS

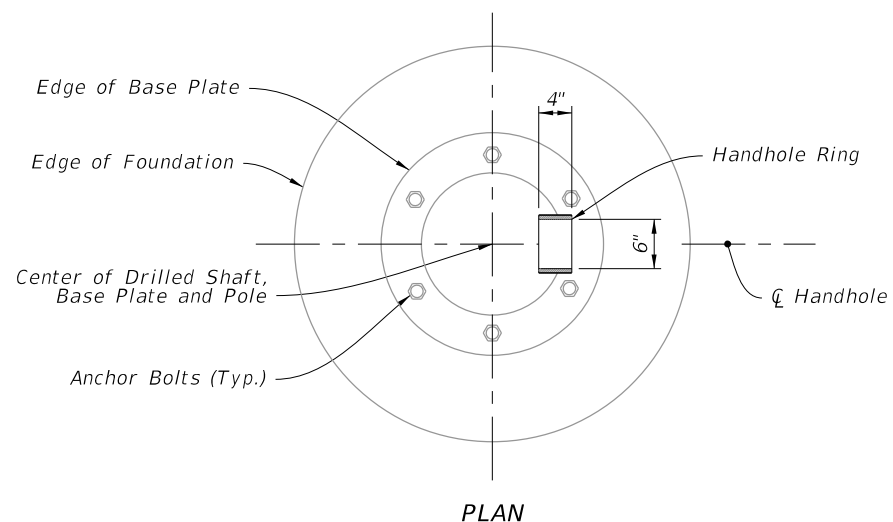
STEEL CCTV POLE

INDEX
649-020

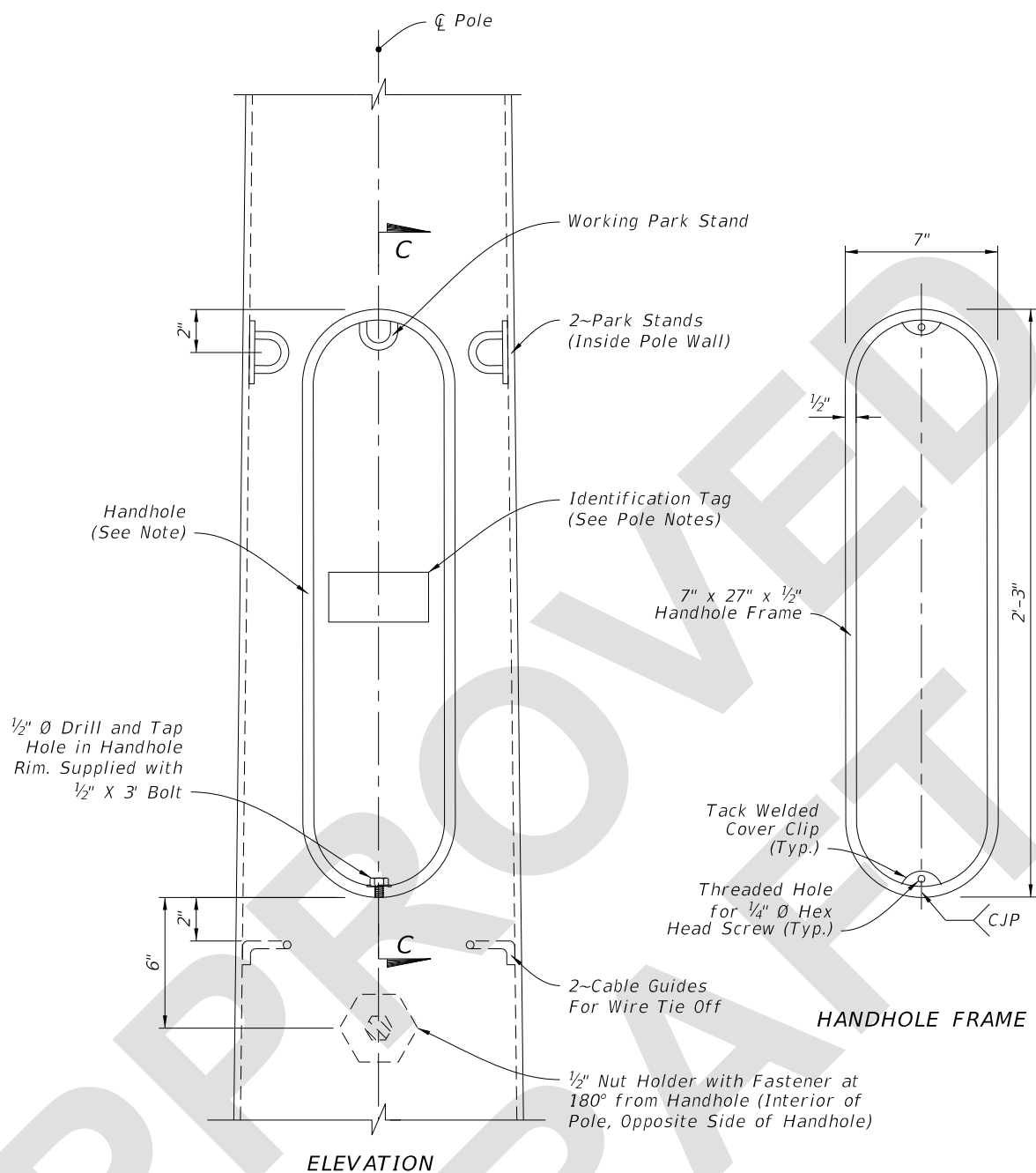
SHEET
3 of 6



ASSEMBLY

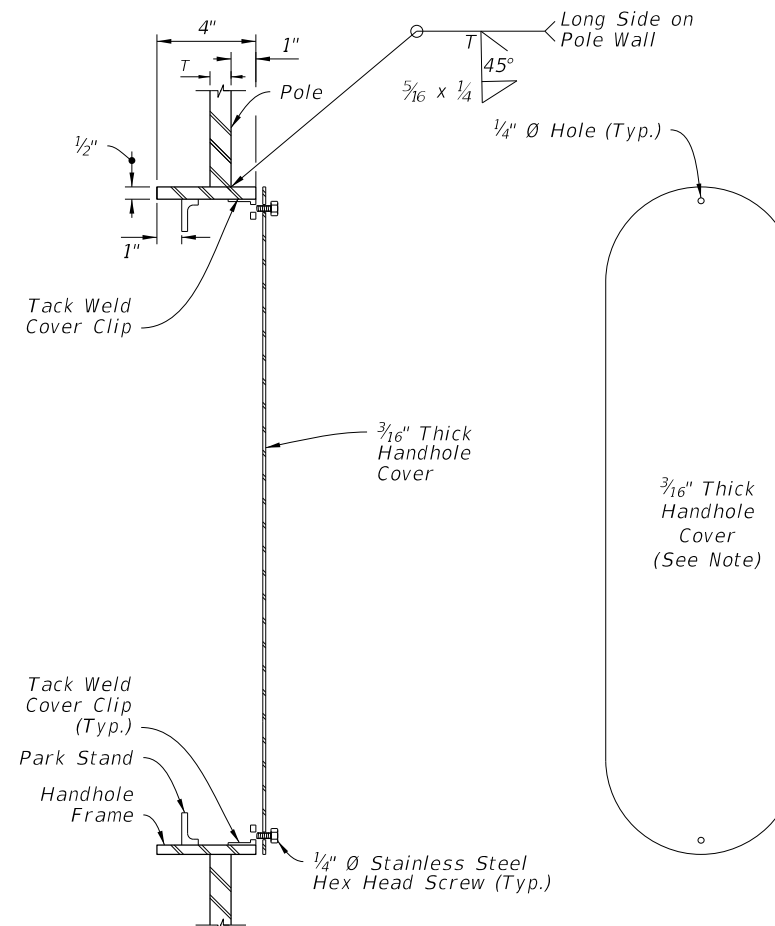


PLAN



ELEVATION

HANDHOLE FRAME

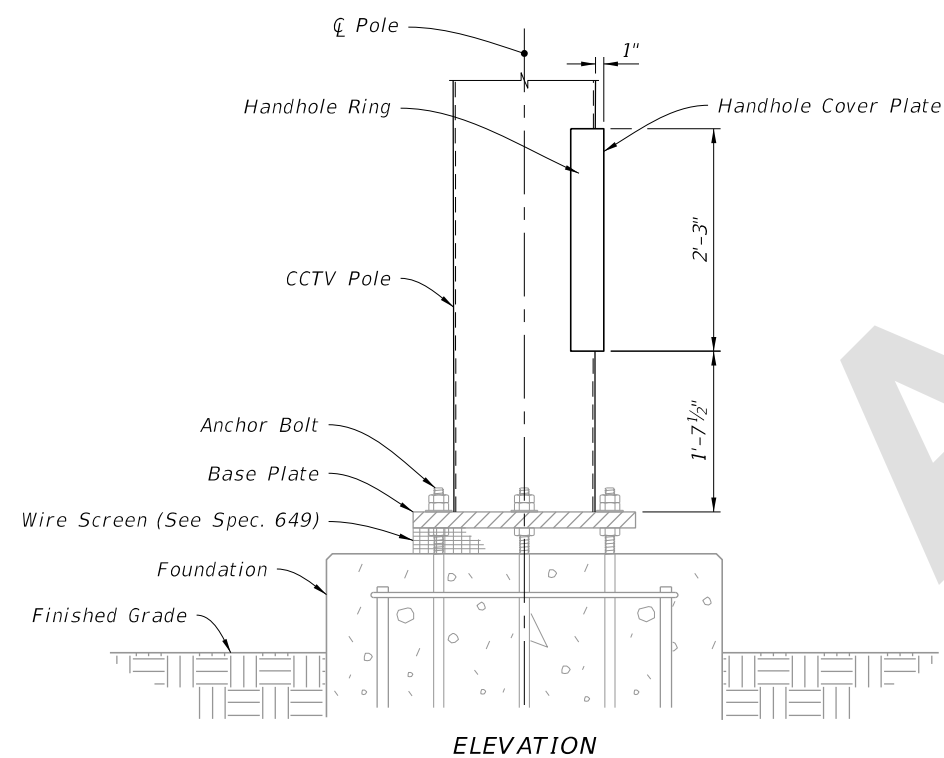


SECTION C-C

COVER PLATE

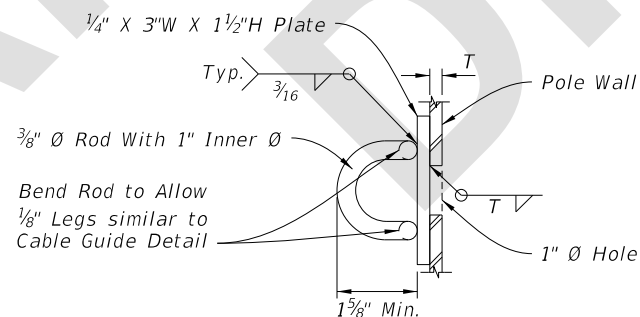
NOTE:

To secure the cover plate, install a steel chain from the cover to the pole or by mounting the cover with hinges and install a pad lock tab.

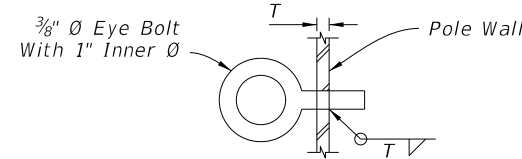


ELEVATION

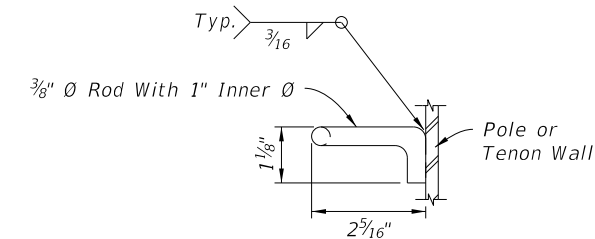
HANDHOLE LOCATION



Rod Option



Eye Bolt Option



CABLE GUIDE DETAIL

PARK STAND DETAILS

7/31/2024 9:47:52 AM

LAST REVISION 11/01/24	DESCRIPTION:
---------------------------	--------------



FY 2025-26
STANDARD PLANS

STEEL CCTV POLE

INDEX
649-020

SHEET
4 of 6