
Index 649-020 Steel CCTV Pole

ORIGINATION

Date: 4/17/24

Name: Joshua Turley

Phone: 414-4475

Email: Joshua.turley@dot.state.fl.us

COMMENTARY

Sheet 3: Anchor nut labels were adjusted to correspond correctly with upcoming associated Spec change being drafted for Section 649; We corrected weld detailing for clarity and brevity.

Sheet 4: We corrected weld detailing to conform with accepted convention.

COMMENTS AND RESPONSES

BLACK = Industry Review Comments **BLUE** = Standard Plans Response **GREEN** = Change Made to Index

Name: Halim Bas

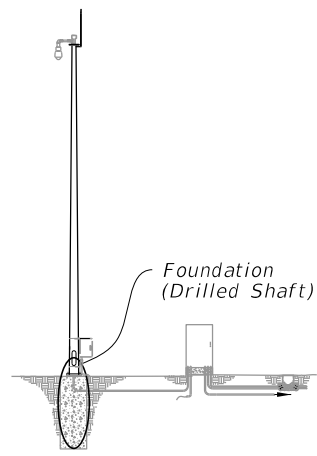
Date: 7/18/24

COMMENT: See comments on 649-010 for base plate weld symbol correction. Silicone-caulk call out is not in agreement with 649-010. I think the detail in 649-010 is more preferable. We cannot have CJP welds without either one of the following: backing bar, back welding, backing weld, or melt through (melt through is probably the only feasible option). This needs to be fixed."

RESPONSE: Good catch. We will update that callout and make the same adjustments as 649-010.

CHANGE MADE TO INDEX: Updated Sheet 3 to remove dimensions and update callouts.

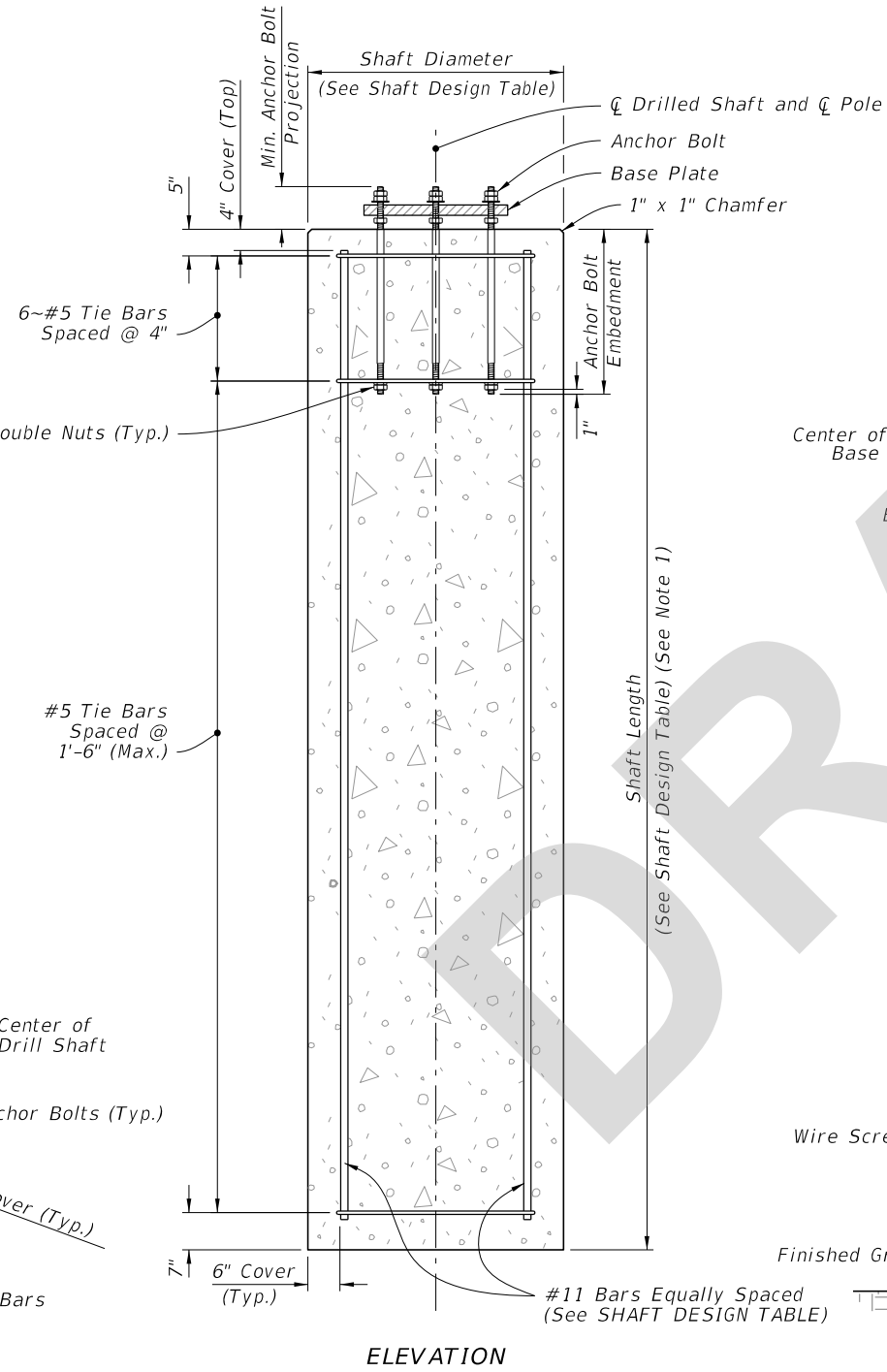
Response Date: 7/24/24



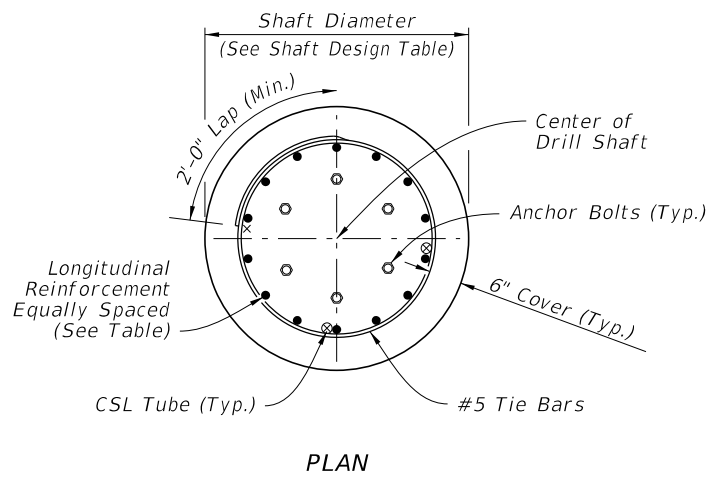
ASSEMBLY

NOTES:

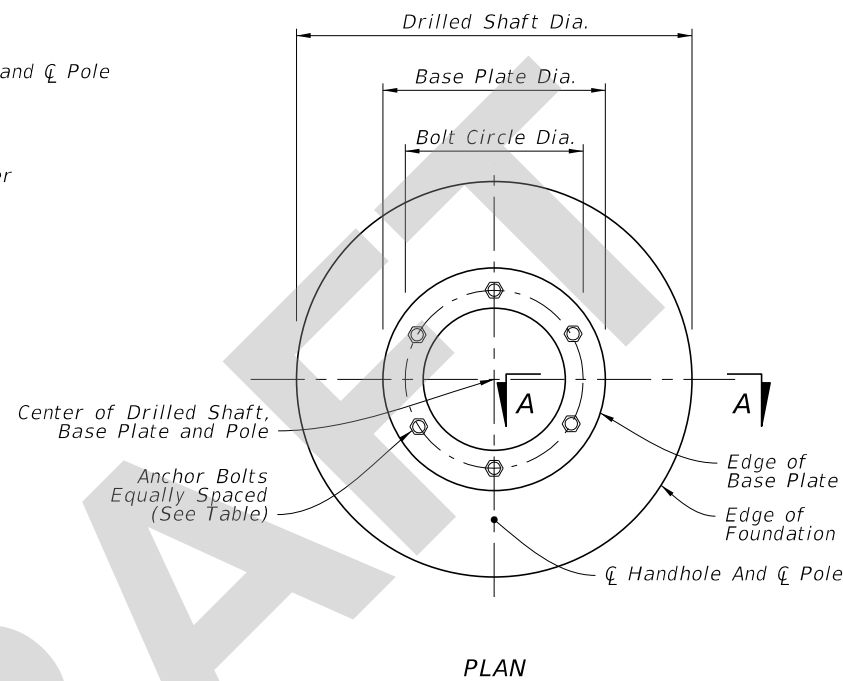
1. Shaft Length is based on 1'-0" height above the finished grade.
2. Retainer nut may be half-height. Provide individual nut covers (not shown) for each bolt.
3. Conduit and CSL Tubes not shown for clarity.
4. Work these details with Data Table on Sheet 2.



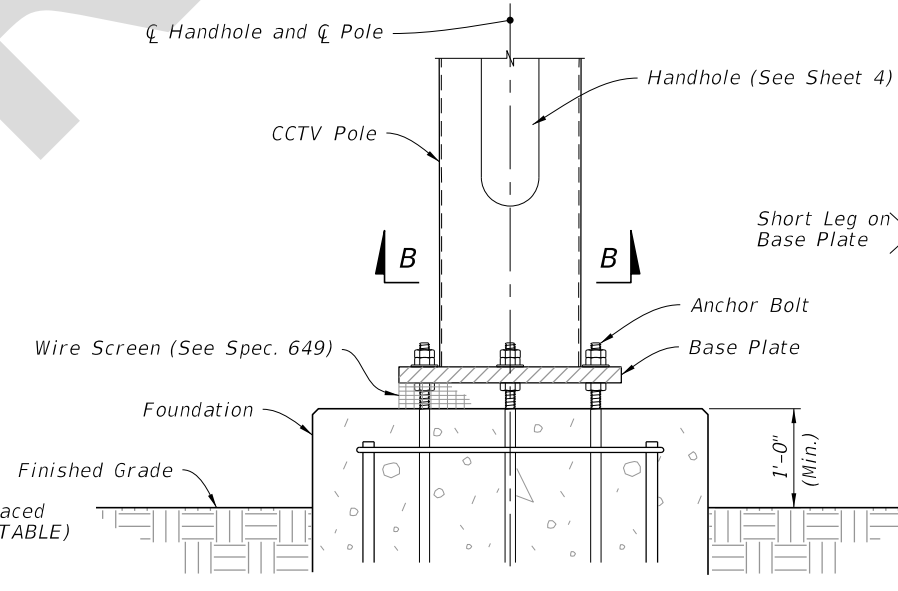
ELEVATION



PLAN

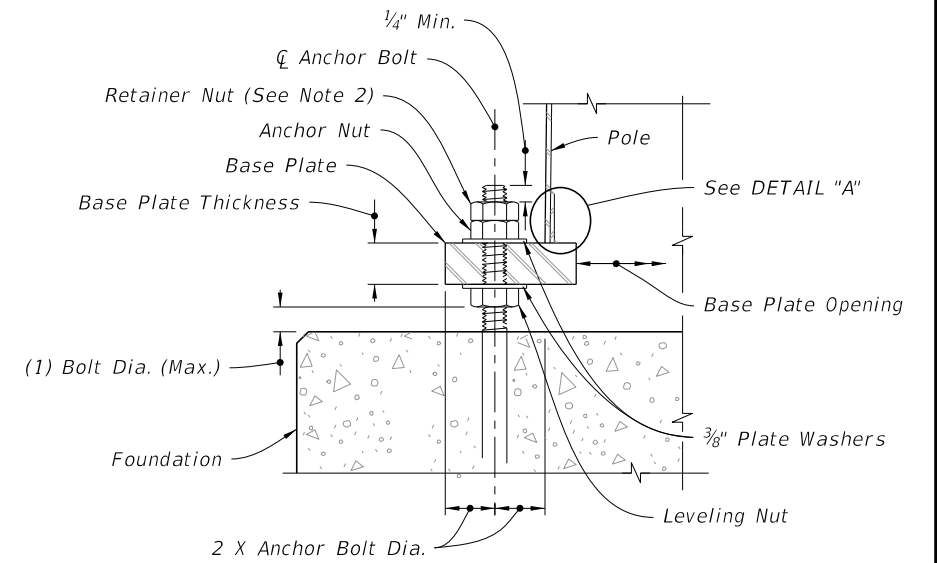


PLAN

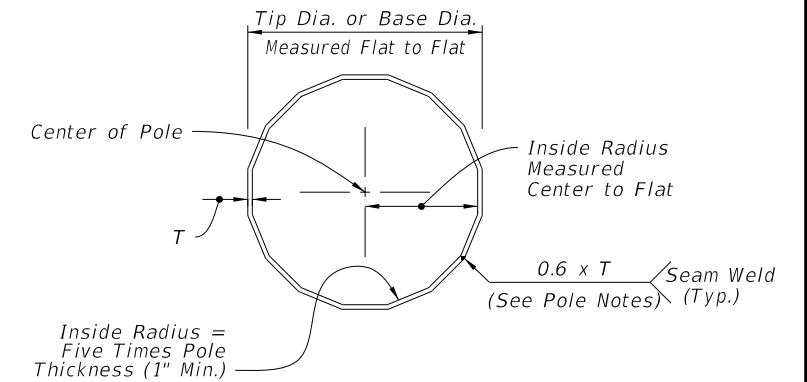


ELEVATION

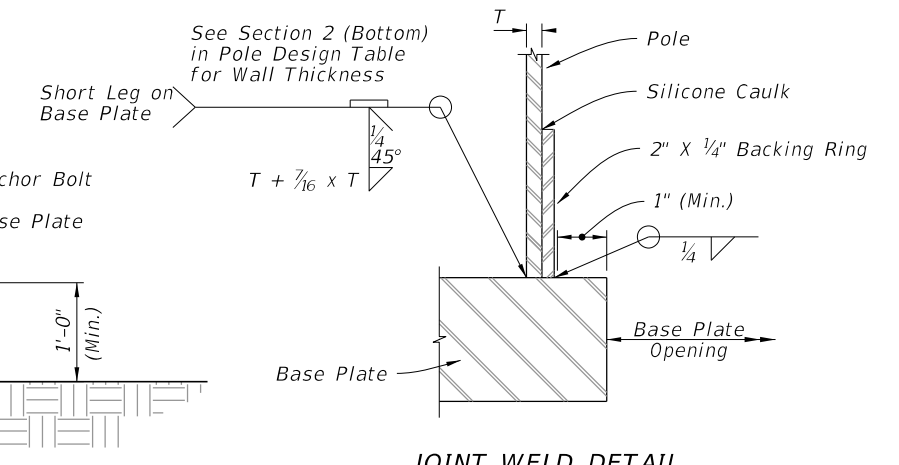
BASE PLATE



SECTION A-A



SECTION B-B



JOINT WELD DETAIL

DETAIL "A"

FOUNDATION

7/31/2024 9:47:47 AM

LAST REVISION 11/01/24	DESCRIPTION:
---------------------------	--------------



FY 2025-26
STANDARD PLANS

STEEL CCTV POLE

INDEX
649-020

SHEET
3 of 6