
Index 649-010 Steel Strain Pole

ORIGINATION

Date: 2/6/2024

Name: Joshua Turley

Phone: 414-4475

Email: Joshua.turley@dot.state.fl.us

COMMENTARY

There is an associated Spec change being drafted for Section 649 that pertains to process for tightening the anchor bolts. These changes make it so that the language aligns between the Spec and the Standard. Removed weld hatches to make consistent with the rest of the Standards and also industry convention.

COMMENTS AND RESPONSES

BLACK = Industry Review Comments **BLUE** = Standard Plans Response **GREEN** = Change Made to Index

Name: Halim Bas

Date: 7/18/2024

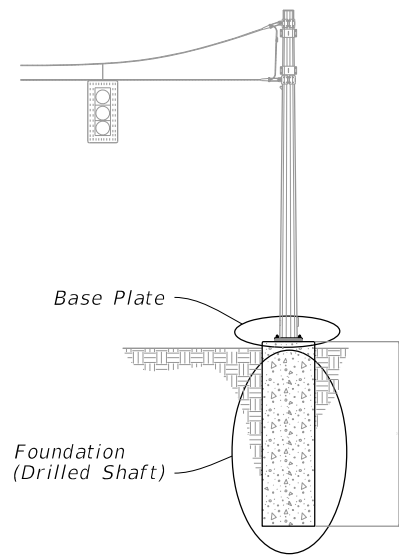
COMMENT: There is a dimension for the welding hatch that is still in place. It needs to be removed. The unequal leg sizes of the reinforcement weld are shown next to the bevel symbol. This should be aligned with the reinforcement fillet, and parentheses should not be used. This is confusing. Parentheses are reserved for weld size of groove welds. Since there is an x sign, I do not see any ambiguity in the way "T + 7/16" will be interpreted. Simply put "T+7/16 x T". With a tail note that reads "T LEG ON BASE PLATE". This is the guidance in ASTM A2.4 item 5.2.2 and Figure 32(D).

RESPONSE: Good catch. We will update accordingly.

CHANGE MADE TO INDEX: Updated Sheet 2 to take off the dimension and clarify the callouts.

Response Date: 7/24/2024

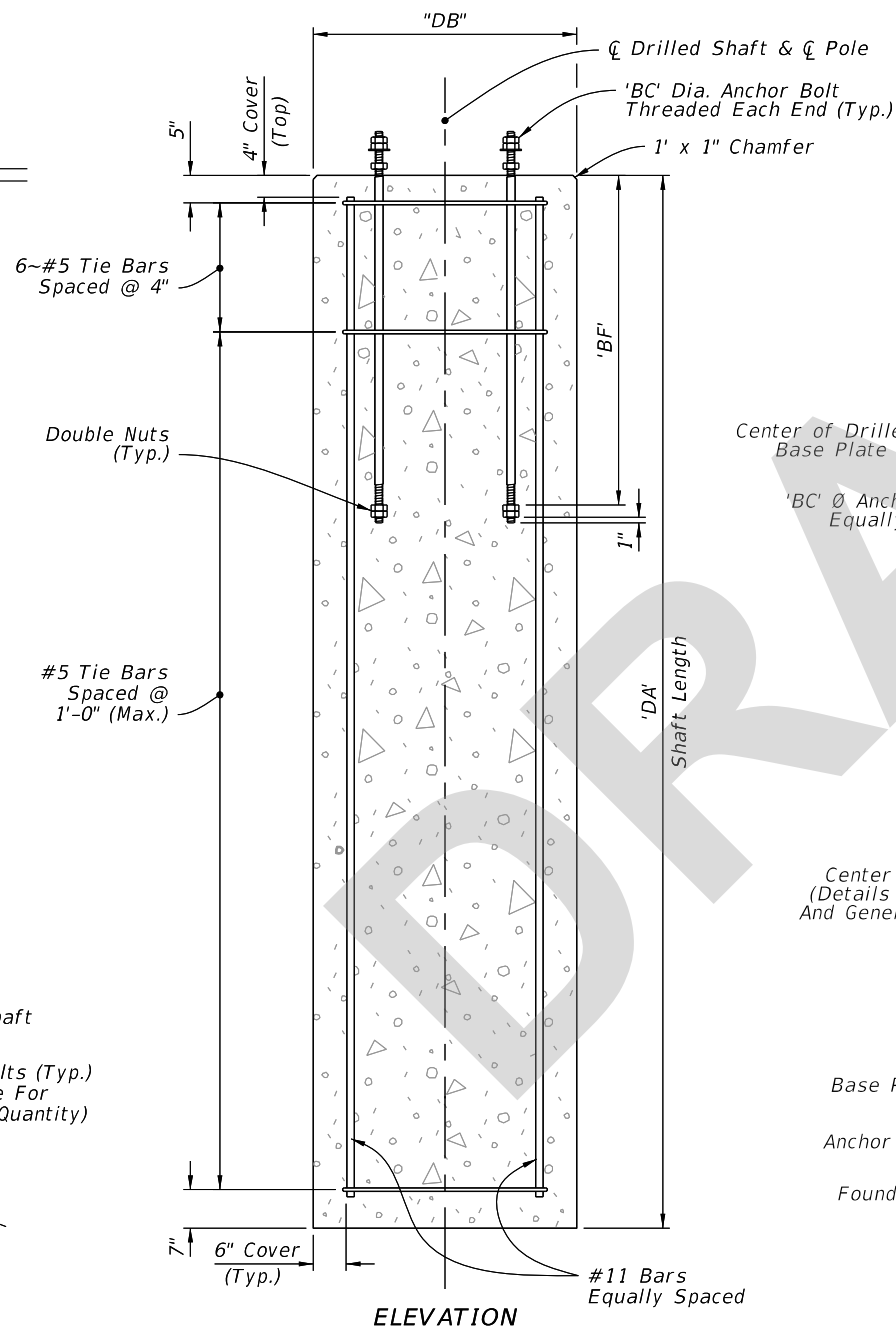
POLE TYPE	STEEL STRAIN POLE DATA TABLE									
	POLE		BASE CONNECTION				SHAFT			
	J (in)	K (in)	No. of Bolts	BA (in)	BB (in)	BC (in)	BF (in)	DA (FT)	DB (FT)	No. of #11 Bars
PS-IV	0.250	14	8	25	2.50	1 3/8	60	14	4	14
PS-V	0.313	16	10	28	2.50	1 1/2	60	15	4	14
PS-VI	0.313	18	12	30	2.50	1 1/2	60	16	4	14
PS-VII	0.313	21	14	33	2.50	1 1/2	60	16	4.5	16
PS-VIII	0.313	23	16	35	2.50	1 1/2	60	17	4.5	16
PS-IX	0.313	25	12	39	3.00	1 3/4	60	17	5	18
PS-X	0.313	27	14	41	3.00	1 3/4	60	18	5	18



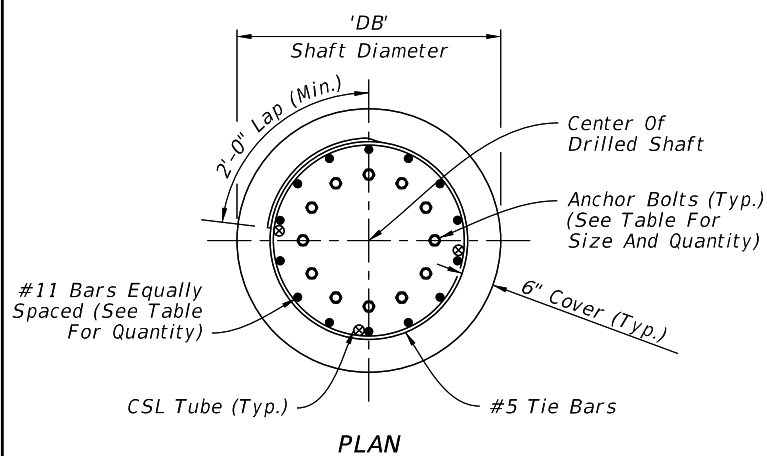
POLE ASSEMBLY

NOTE:

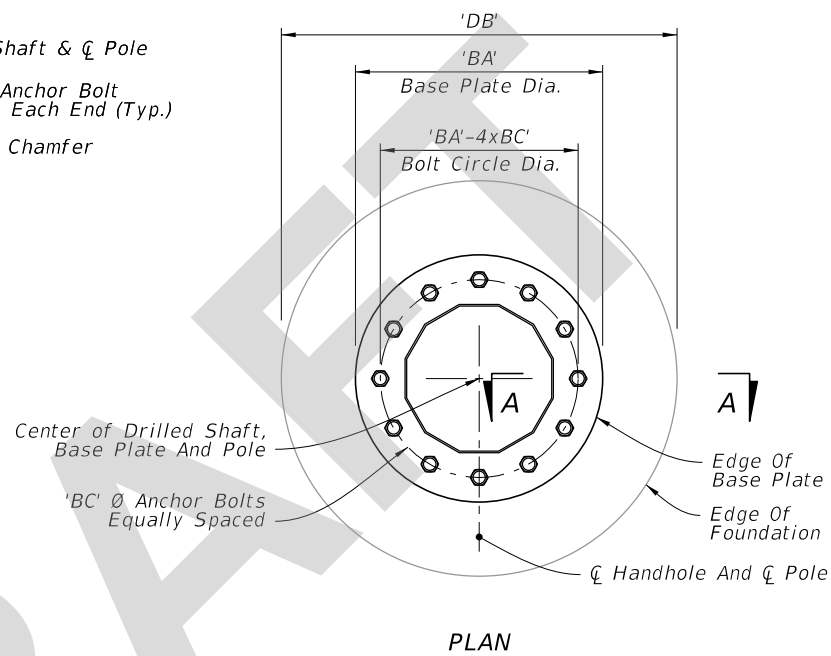
1. Retainer nut may be half-height. Provide individual nut covers (not shown) for each bolt.



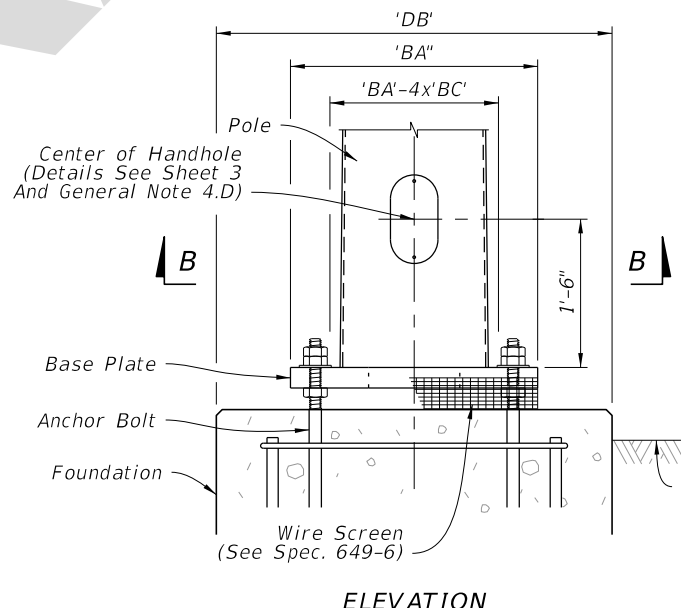
FOUNDATION



PLAN

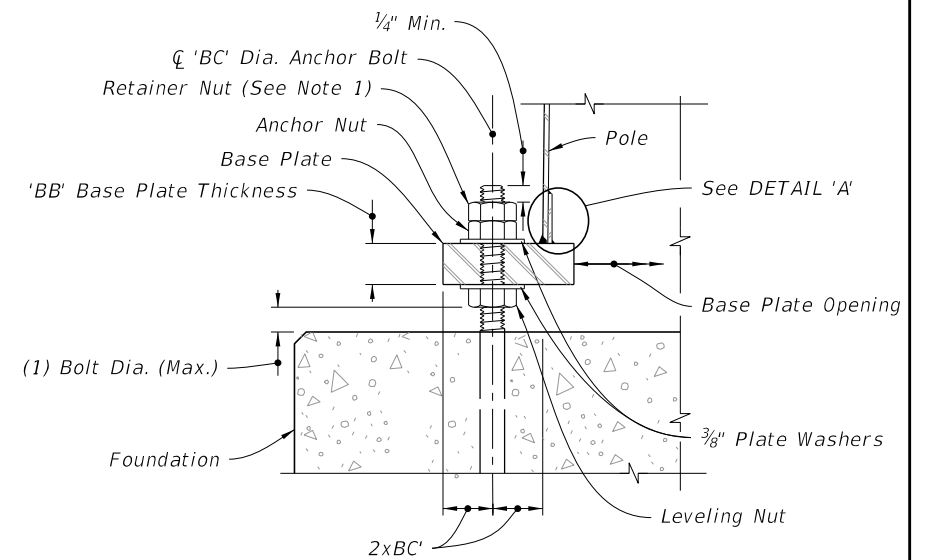


PLAN

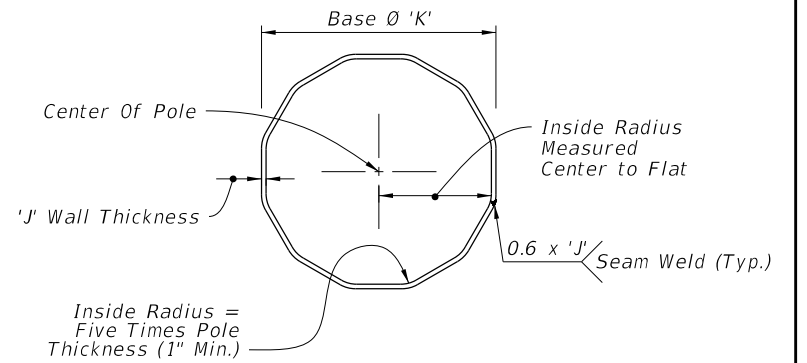


ELEVATION

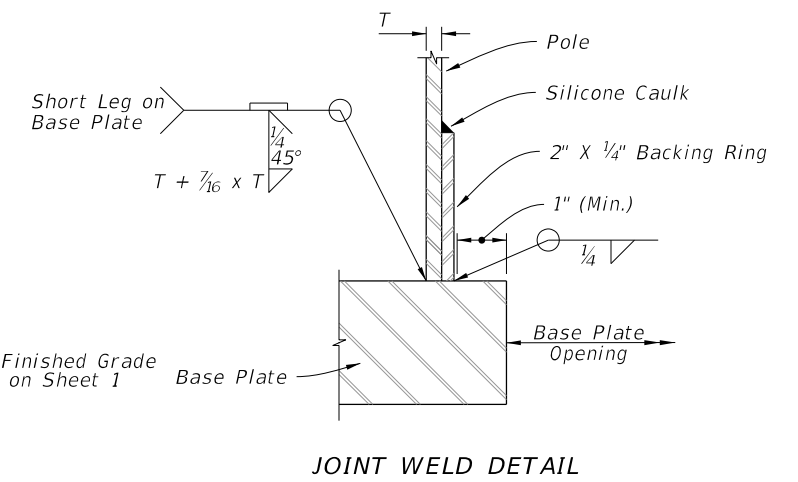
BASE PLATE



SECTION A-A



SECTION B-B



JOINT WELD DETAIL

DETAIL 'A'

FOUNDATION AND BASE DETAILS

7/31/2024 8:32:53 AM

LAST REVISION 11/01/24	DESCRIPTION:
---------------------------	--------------



FY 2025-26
STANDARD PLANS

STEEL STRAIN POLE

INDEX
649-010

SHEET
2 of 3