

Origination Form

Proposed Revisions to a Standard Plans Index

Originator:	Turley, Joshua	Index Number:	521-002
Date:	4/11/2024	Sheet Number(s):	2
E-mail:	Joshua.Turley@dot.state.fl.us	Index Title:	PIER PROTECTION BARRIER

Summary of the changes:

Sheet 2: Added "Min." to 10'-9" dim. on EXAMPLE SECTION VIEW.

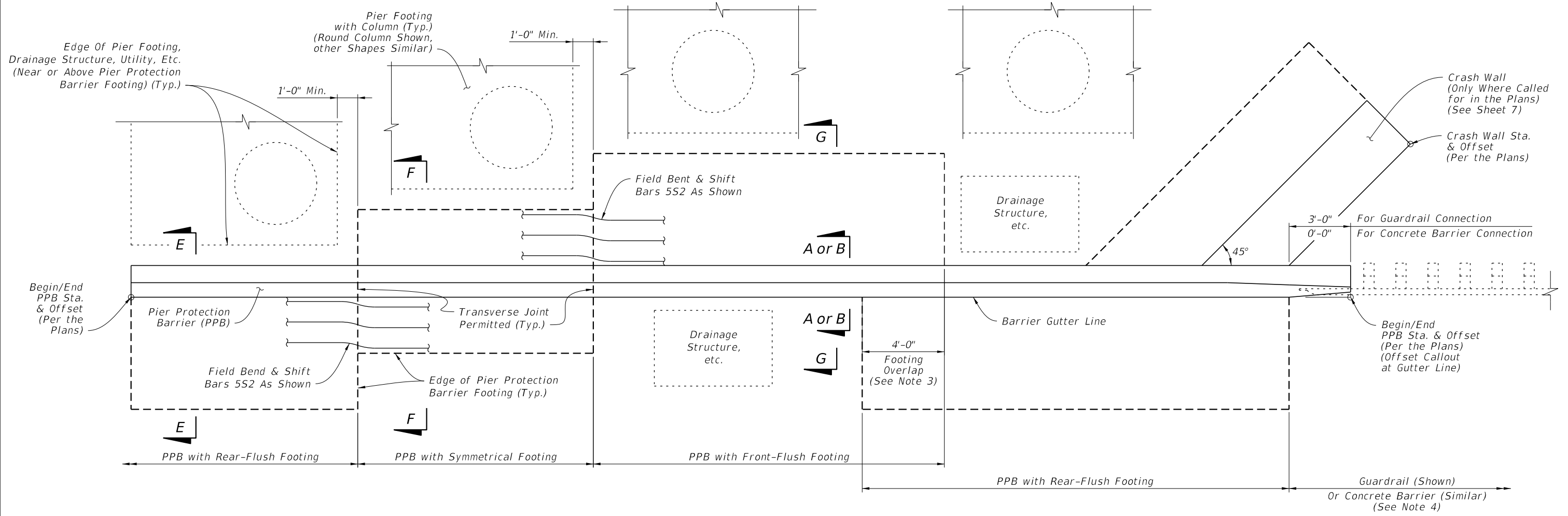
Commentary/Background:

Need to add clarity that this was a minimum dimension.

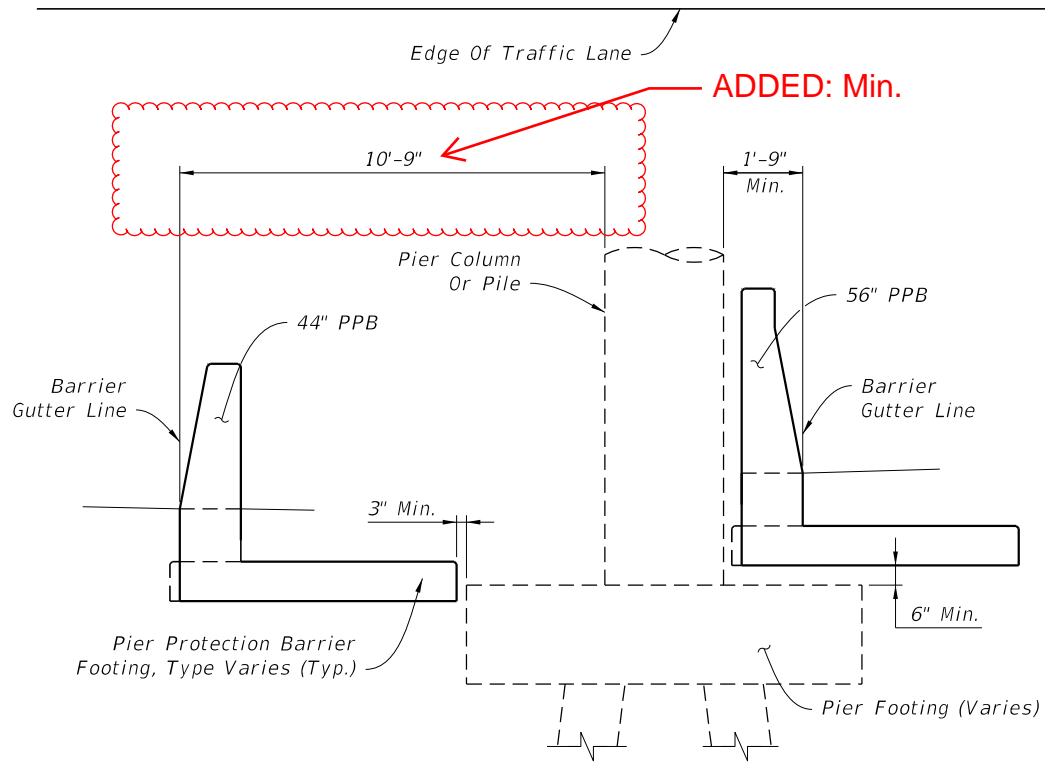
Other Affected Documents/Offices	Person Contacted	Affected (Yes/No)
Other Standard Plans		No
FDOT Design Manual		No
Standard Specifications		No
Basis of Estimates Manual		No
Approved Product List		No
Construction Office		No
Maintenance Office		No

Implementation

["FY-Standard Plans (Next Release)"]



EXAMPLE PLAN VIEW



EXAMPLE SECTION VIEW

NOTES:

1. GENERAL: The views shown herein are schematic only, showing example layouts for Pier Protection Barrier (PPB) footings and Crash Wall placement in relation to adjacent miscellaneous structures (including bridge piers, footings, drainage structures, etc.). The actual PPB footing placement depends on the project-specific configuration of adjacent structures and obstacles. For project-specific locations of PPB and adjacent features, see the Plans.
2. MINIMUM FOOTING LENGTH: The minimum length of a single footing option (i.e. Symmetrical Footing, Rear-Flush Footing, Front-Flush Footing), is 8'-0", measured longitudinally. See Sheet 6 for the footing option details.
3. FOOTING OVERLAP: When a Front-Flush Footing section connects to a Rear-Flush Footing section, a 4'-0" footing overlap is required as shown. In footing overlap segments, place all lateral steel reinforcement continuously for the entire width of the combined footing while maintaining the cover requirements per Sheet 6.
4. CONNECTING GUARDRAIL OR CONCRETE BARRIER: Connect the PPB to either Guardrail or Concrete Barrier as specified in the Plans. For additional Guardrail Details, see Sheet 3 and Index 536-001. For additional Concrete Barrier Details, see Sheet 3 and Index 521-001.

EXAMPLE LAYOUTS - FOOTING PLACEMENT AND CONNECTIONS

10/3/2023 12:55:45 PM

LAST REVISION	11/01/17	11/01/24	DESCRIPTION:
---------------	----------	----------	--------------

**FY 2024-25
STANDARD PLANS**

PIER PROTECTION BARRIER

INDEX	SHEET
521-002	2 of 8

Edge Of Pier Footing, Drainage Structure, Utility, Etc. (Near or Above Pier Protection Barrier Footing) (Typ.)

Pier Footing with Column (Typ.) (Round Column Shown, other Shapes Similar)

1'-0" Min.

1'-0" Min.

Begin/End PPB Sta. & Offset (Per the Plans)

Pier Protection Barrier (PPB)

Field Bend & Shift Bars 5S2 As Shown

Edge of Pier Protection Barrier Footing (Typ.)

PPB with Rear-Flush Footing

PPB with Symmetrical Footing

PPB with Front-Flush Footing

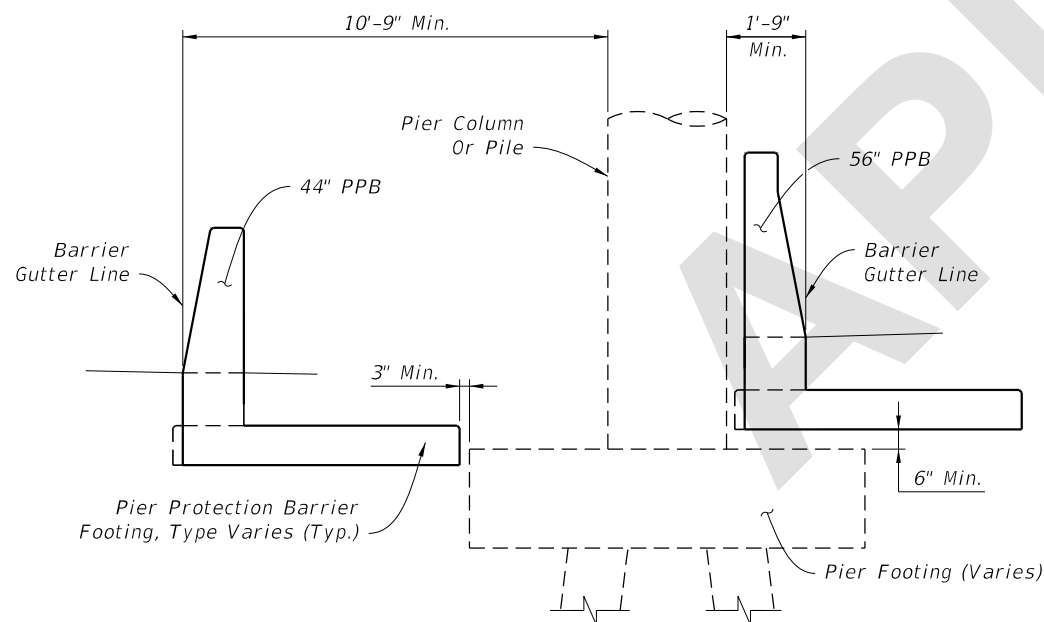
PPB with Rear-Flush Footing

Guardrail (Shown) Or Concrete Barrier (Similar) (See Note 4)

Edge Of Traffic Lane

EXAMPLE PLAN VIEW

Direction of Traffic



EXAMPLE SECTION VIEW

NOTES:

1. GENERAL: The views shown herein are schematic only, showing example layouts for Pier Protection Barrier (PPB) footings and Crash Wall placement in relation to adjacent miscellaneous structures (including bridge piers, footings, drainage structures, etc.). The actual PPB footing placement depends on the project-specific configuration of adjacent structures and obstacles. For project-specific locations of PPB and adjacent features, see the Plans.
2. MINIMUM FOOTING LENGTH: The minimum length of a single footing option (i.e. Symmetrical Footing, Rear-Flush Footing, Front-Flush Footing), is 8'-0", measured longitudinally. See Sheet 6 for the footing option details.
3. FOOTING OVERLAP: When a Front-Flush Footing section connects to a Rear-Flush Footing section, a 4'-0" footing overlap is required as shown. In footing overlap segments, place all lateral steel reinforcement continuously for the entire width of the combined footing while maintaining the cover requirements per Sheet 6.
4. CONNECTING GUARDRAIL OR CONCRETE BARRIER: Connect the PPB to either Guardrail or Concrete Barrier as specified in the Plans. For additional Guardrail Details, see Sheet 3 and Index 536-001. For additional Concrete Barrier Details, see Sheet 3 and Index 521-001.

EXAMPLE LAYOUTS - FOOTING PLACEMENT AND CONNECTIONS

LAST REVISION 11/01/24

DESCRIPTION:



FY 2025-26 STANDARD PLANS

PIER PROTECTION BARRIER

INDEX 521-002

SHEET 2 of 8

5/29/2024 8:34:15 AM