

# Origination Form

## Proposed Revisions to a Standard Plans Index

<b>Originator:</b>	Turley, Joshua	<b>Index Number:</b>	455-112
<b>Date:</b>	8/21/2024	<b>Sheet Number(s):</b>	2
<b>E-mail:</b>	Joshua.Turley@dot.state.fl.us	<b>Index Title:</b>	12" SQUARE CFRP & SS PRESTRESSED CONCRETE PILE

### Summary of the changes:

Sheet 2: Adjusted Strand Pattern diameter decimal places

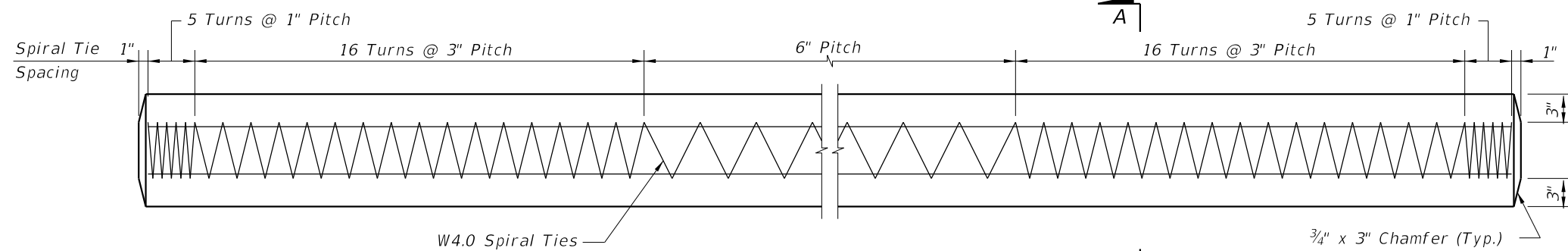
### Commentary/Background:

This is a more accurate representation of the nominal diameter driven by the fact that the strands are fabricated in millimeters not inches.

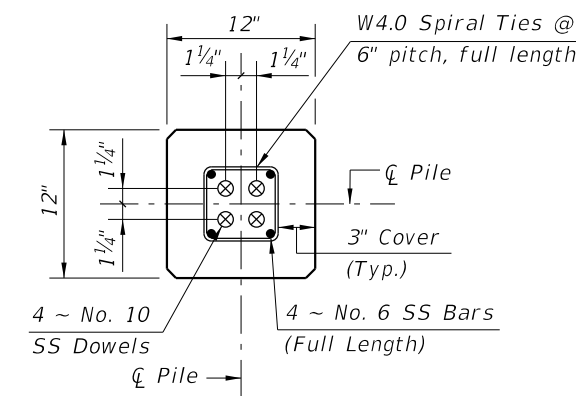
Other Affected Documents/Offices	Person Contacted	Affected (Yes/No)
Other Standard Plans		No
FDOT Design Manual		No
Standard Specifications		No
Basis of Estimates Manual		No
Approved Product List		No
Construction Office		No
Maintenance Office		No

### Implementation

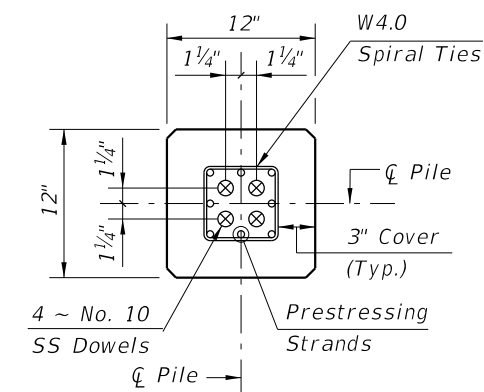
["FY-Standard Plans (Next Release)"]



ELEVATION



SECTION D-D  
(See Non-Drivable Unforeseen Reinforced Precast Pile Build-Up Detail)



SECTION E-E  
(See Drivable Unforeseen Prestressed Precast Pile Splice Detail)

SS PILE SPLICE REINFORCEMENT DETAILS

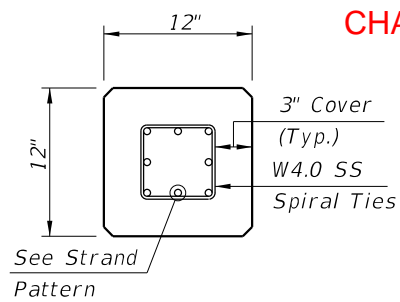
- NOTES:
1. Work this Index with Index 455-101 - Typical Details and Notes for Square CFRP & SS Prestressed Concrete Piles and Index 455-102 - Square CFRP & SS Prestressed Concrete Pile Splices.
  2. Any of the given Strand Patterns may be utilized.  
The strands shall be located as follows:  
Place one strand at each corner and place the remaining strands equally spaced between the corner strands.  
The total strand pattern shall be concentric with the nominal concrete section of the pile.

CHANGED TO: 0.520"

CHANGED TO: 0.620"

STRAND PATTERN

- 8 - 1/2" Ø, HSSS at 24 kips
- 8 - 0.6" Ø, HSSS at 26 kips



SECTION A-A

10/15/2023 11:54:16 AM

LAST REVISION	DESCRIPTION:
11/01/20	

11/01/24



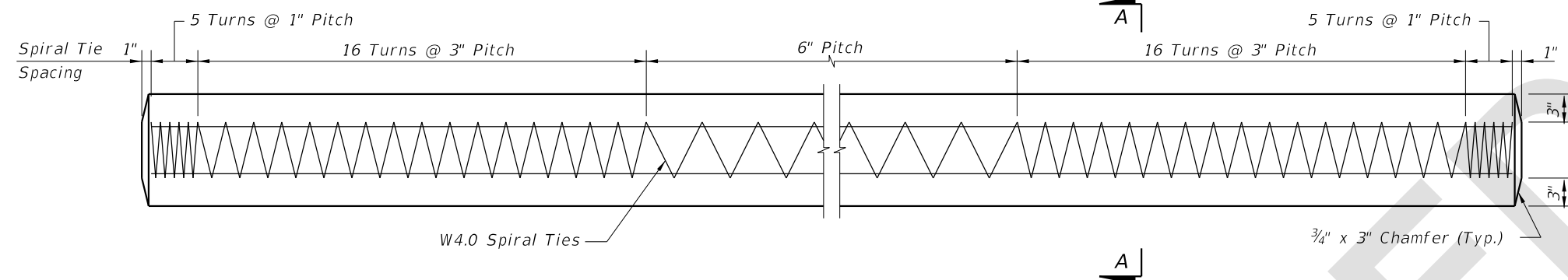
FY 2024-25  
STANDARD PLANS

12" SQUARE CFRP & SS PRESTRESSED  
CONCRETE PILE

SS PRESTRESSED PILE DETAILS

INDEX  
455-112

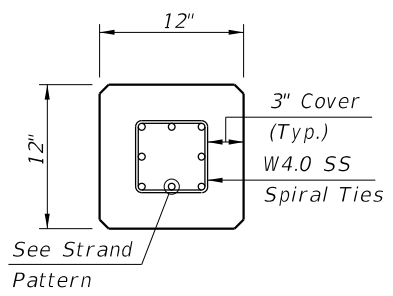
SHEET  
2 of 2



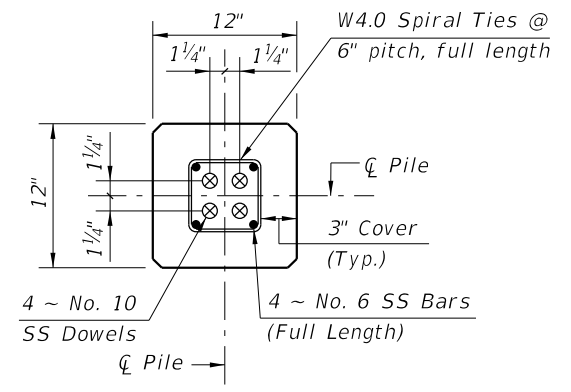
ELEVATION

**STRAND PATTERN**

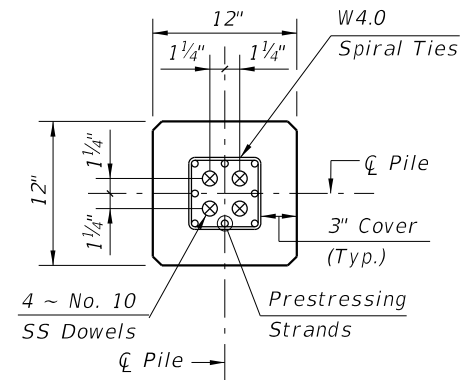
- 8 ~ 0.52" Ø, HSSS at 24 kips
- 8 ~ 0.62" Ø, HSSS at 26 kips



SECTION A-A



SECTION D-D  
(See Non-Drivable Unforeseen Reinforced Precast Pile Build-Up Detail)



SECTION E-E  
(See Drivable Unforeseen Prestressed Precast Pile Splice Detail)

**SS PILE SPLICE REINFORCEMENT DETAILS**

- NOTES:
1. Work this Index with Index 455-101 - Typical Details and Notes for Square CFRP & SS Prestressed Concrete Piles and Index 455-102 - Square CFRP & SS Prestressed Concrete Pile Splices.
  2. Any of the given Strand Patterns may be utilized. The strands shall be located as follows:  
Place one strand at each corner and place the remaining strands equally spaced between the corner strands.  
The total strand pattern shall be concentric with the nominal concrete section of the pile.

SS PRESTRESSED PILE DETAILS

LAST REVISION 11/01/24	REVISION	DESCRIPTION:		FY 2025-26 STANDARD PLANS	12" SQUARE CFRP & SS PRESTRESSED CONCRETE PILE	INDEX 455-112	SHEET 2 of 2
---------------------------	----------	--------------	--	------------------------------	---	------------------	-----------------

8/21/2024 2:12:48 PM