

Origination Form

Proposed Revisions to a Standard Plans Index

| | | | |
|--------------------|--------------------------------|-------------------------|---------------------------|
| Originator: | McGinnis, James | Index Number: | 102-661 |
| Date: | 5/8/2024 | Sheet Number(s): | 1 and 2 |
| E-mail: | James.McGinnis@dot.state.fl.us | Index Title: | BICYCLE FACILITY CLOSURES |

Summary of the changes:

Sheet 1: Updated sign names based on new MUTCD 11th edition

Sheet 2: Updated sign names based on new MUTCD 11th edition. Updated signs W16-1P detail. Updated "Bikes Merge" sign. Updated Note 2 to reflect new sign name. Updated PCMS messages for consistency.

Commentary/Background:

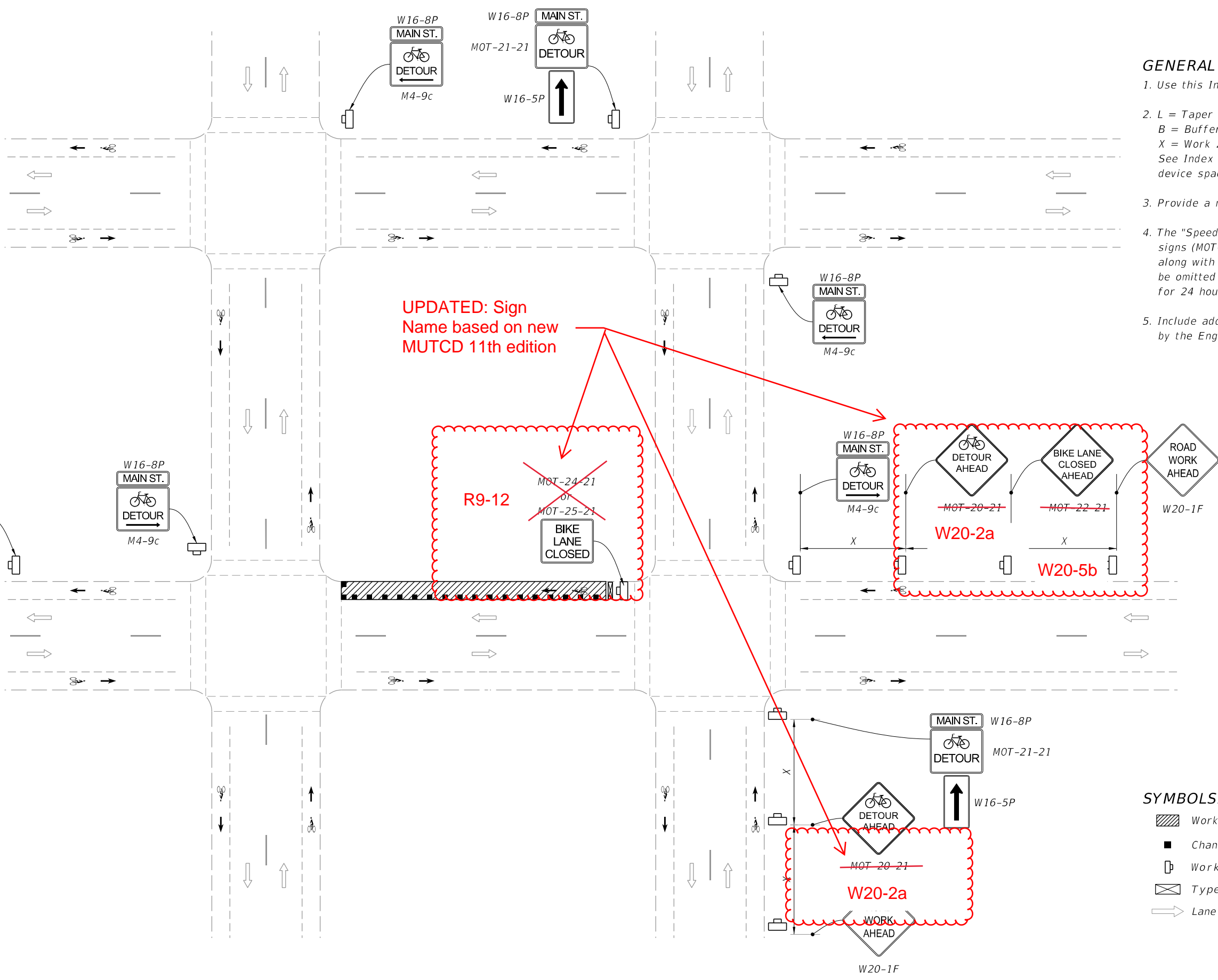
Sign names and graphics updated to be in compliance with the new MUTCD 11th Edition.

| Other Affected Documents/Offices | Person Contacted | Affected (Yes/No) |
|----------------------------------|------------------|-------------------|
| Other Standard Plans | Darren Martin | Yes |
| FDOT Design Manual | | No |
| Standard Specifications | | No |
| Basis of Estimates Manual | | No |
| Approved Product List | | No |
| Construction Office | | No |
| Maintenance Office | | No |

Implementation

["FY-Standard Plans (Next Release)"]

9/28/2023 8:39:29 AM



UPDATED: Sign Name based on new MUTCD 11th edition

GENERAL NOTES:

1. Use this Index only when called for in the Plans.
2. L = Taper Length
B = Buffer Length
X = Work Zone Sign Distance
See Index 102-600 for "L", "B", "X", channelizing device spacing values.
3. Provide a minimum 5'-0" wide bicycle path.
4. The "Speeding Fines Doubled When Workers Present" signs (MOT-13-06) and "End Road Work" signs (G20-2), along with associated work zone sign distances, may be omitted when the work operation will be in place for 24 hours or less.
5. Include additional signage at intersections as required by the Engineer or shown in the Plans.

SYMBOLS:

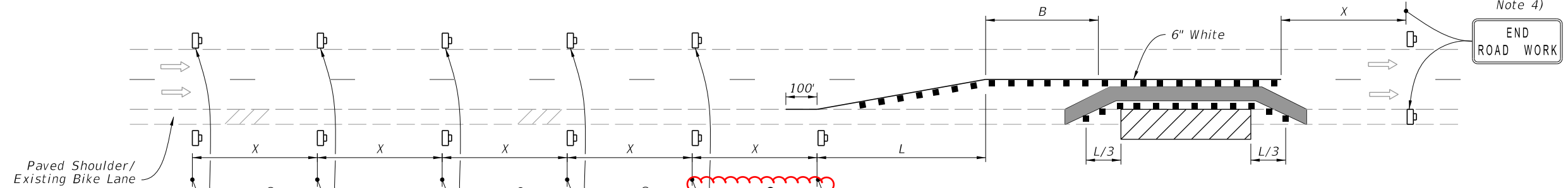
- Work Area
- Channelizing Device (See Index 102-600)
- Work Zone Sign
- Type III Barricade
- Lane Identification and Direction of Traffic

11/01/24

BICYCLE DETOUR

| | |
|--------------------------------------|--------------|
| LAST REVISION 11/01/21 | DESCRIPTION: |
|--------------------------------------|--------------|

G20-2
(See General
Note 4)

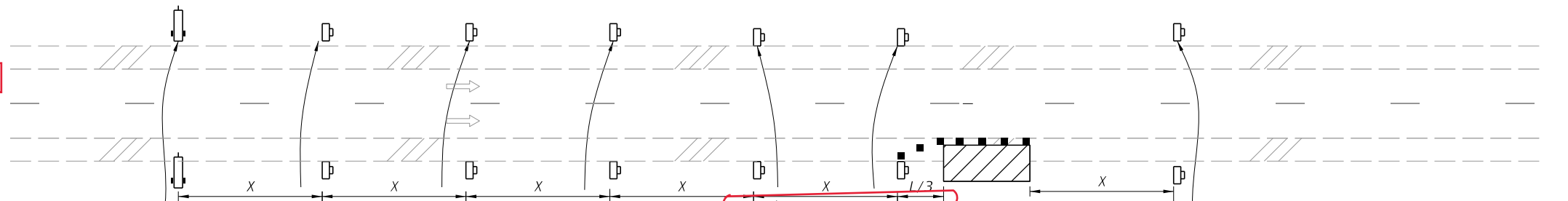


NOTES:

1. Temporary pavement markings may be omitted when the work operation is in place for 3 days or less.
2. If the Closed Bicycle Facility is a marked bicycle lane, use sign ~~MOT-22-21~~ instead of sign W21-5a.
3. If the travel lane is less than 14' wide, use sign R4-11.

UPDATED: Sign Name based on new MUTCD 11th edition

**BICYCLE FACILITY SHIFT
(With Lane Closure)**



SYMBOLS:

- Work Area
- Temporary Bicycle Way
- Channelizing Device (See Index 102-600)
- Work Zone Sign
- Arrow Board
- Lane Identification and Direction of Traffic
- (1) PCMS=Portable Changeable (Variable) Message Sign

W20-5b

W20-5b
(See Note 2)

UPDATED: "Bikes Merge" Sign

UPDATED: W16-1P Sign Detail

UPDATED: Sign Name based on new MUTCD 11th edition

TYPICAL PCMS DISPLAY:

- Message 1: ~~BICYCLE FACILITY CLOSED~~
- Message 2: BICYCLES ON ROAD

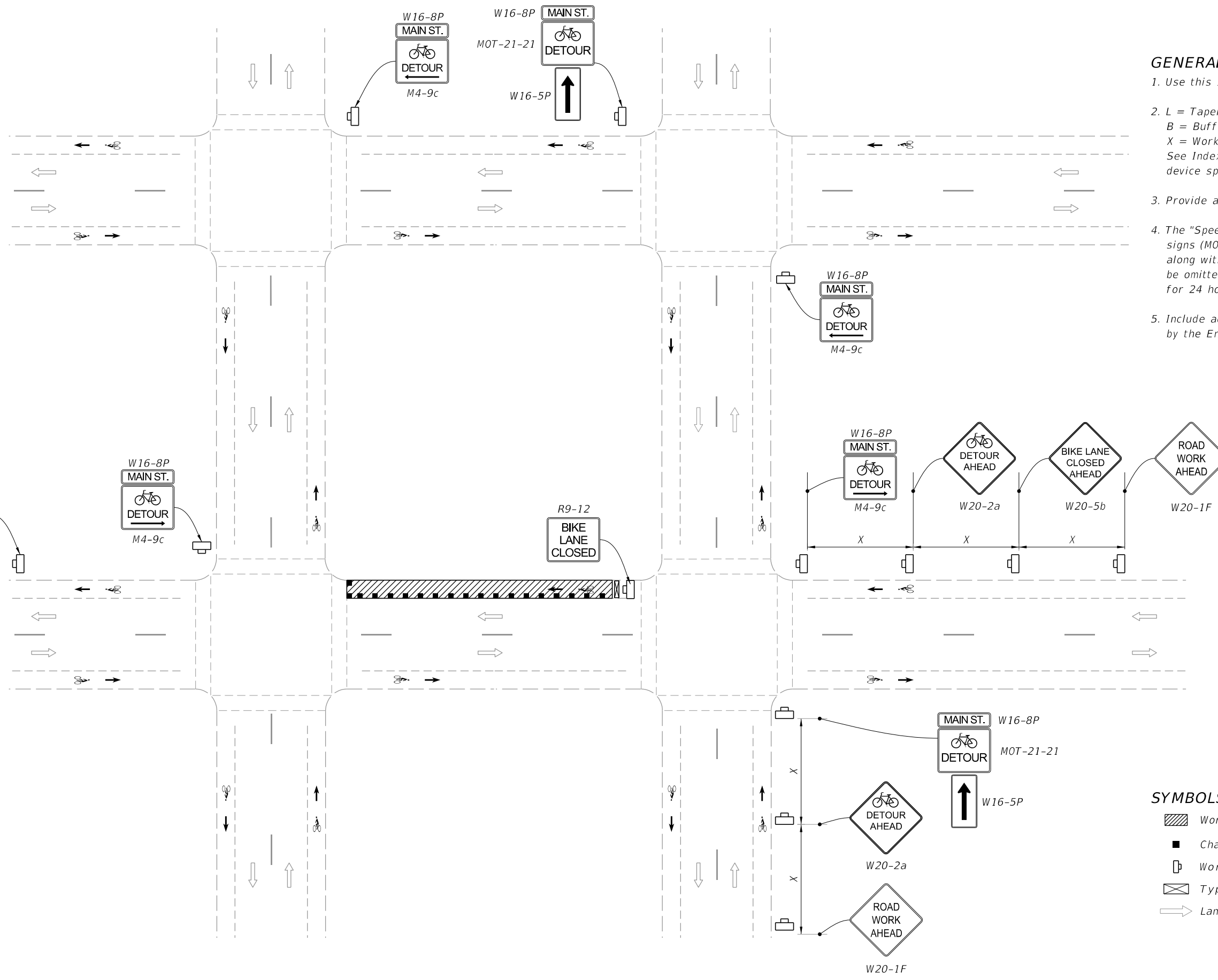
IN

11/01/24

9/28/2023 8:39:33 AM

| | | | | | | | |
|--------------------------------------|----------|--------------|--|------------------------------|---------------------------|------------------|-----------------|
| LAST REVISION II/01/21 | REVISION | DESCRIPTION: | | FY 2024-25 STANDARD PLANS | BICYCLE FACILITY CLOSURES | INDEX 102-661 | SHEET 2 of 2 |
|--------------------------------------|----------|--------------|--|------------------------------|---------------------------|------------------|-----------------|

7/19/2024 8:24:56 AM



GENERAL NOTES:

1. Use this Index only when called for in the Plans.
2. L = Taper Length
B = Buffer Length
X = Work Zone Sign Distance
See Index 102-600 for "L", "B", "X", channelizing device spacing values.
3. Provide a minimum 5'-0" wide bicycle path.
4. The "Speeding Fines Doubled When Workers Present" signs (MOT-13-06) and "End Road Work" signs (G20-2), along with associated work zone sign distances, may be omitted when the work operation will be in place for 24 hours or less.
5. Include additional signage at intersections as required by the Engineer or shown in the Plans.

SYMBOLS:

- Work Area
- Channelizing Device (See Index 102-600)
- Work Zone Sign
- Type III Barricade
- Lane Identification and Direction of Traffic

BICYCLE DETOUR

DRAFT - 2

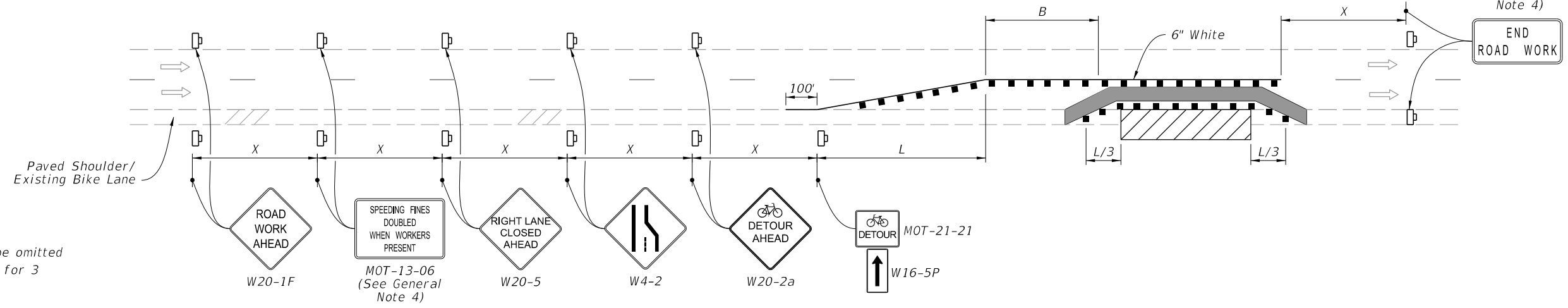
| | | |
|------------------------------|----------|--------------|
| LAST REVISION 11/01/24 | REVISION | DESCRIPTION: |
|------------------------------|----------|--------------|

**FY 2025-26
STANDARD PLANS**

BICYCLE FACILITY CLOSURES

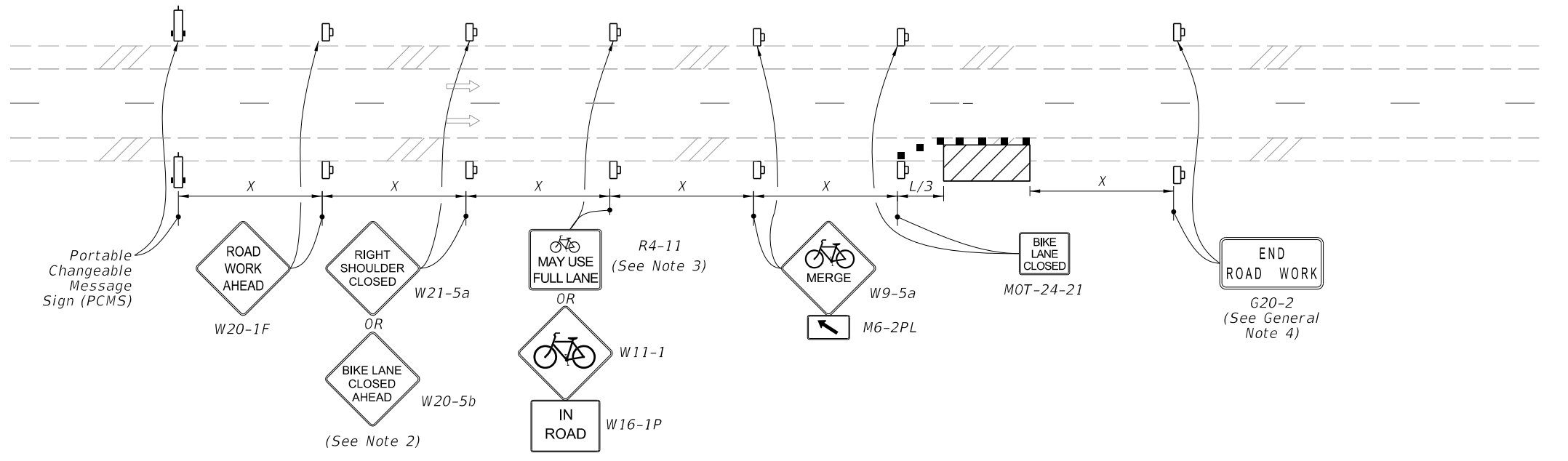
| | |
|------------------|-----------------|
| INDEX 102-661 | SHEET 1 of 2 |
|------------------|-----------------|

G20-2
(See General Note 4)



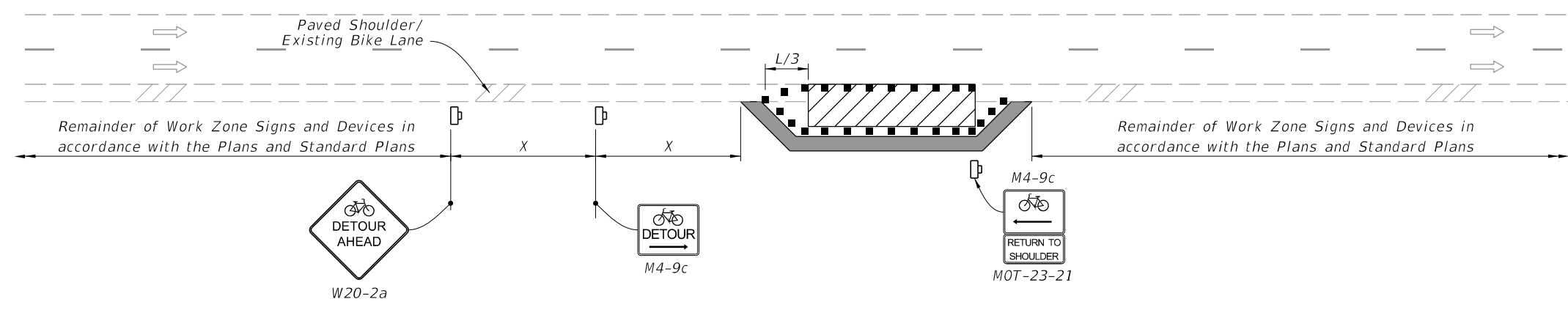
- NOTES:**
1. Temporary pavement markings may be omitted when the work operation is in place for 3 days or less.
 2. If the Closed Bicycle Facility is a marked bicycle lane, use sign W20-5b instead of sign W20-5a.
 3. If the travel lane is less than 14' wide, use sign R4-11.

**BICYCLE FACILITY SHIFT
(With Lane Closure)**



- SYMBOLS:**
- Work Area
 - Temporary Bicycle Way
 - Channelizing Device (See Index 102-600)
 - Work Zone Sign
 - Arrow Board
 - Lane Identification and Direction of Traffic
 - (1) PCMS=Portable Changeable (Variable) Message Sign

**BICYCLE FACILITY SHIFT
(Work Zone Speed of 35 mph or Less)**



TYPICAL PCMS DISPLAY:
 Message 1: BICYCLE FACILITY CLOSED
 Message 2: BICYCLES IN ROAD

BICYCLE SPECIAL DETOUR

DRAFT - 2

7/19/2024 8:25:09 AM

| | | | | | | | |
|---------------------------|----------|--------------|--|------------------------------|---------------------------|------------------|-----------------|
| LAST REVISION 11/01/24 | REVISION | DESCRIPTION: | | FY 2025-26 STANDARD PLANS | BICYCLE FACILITY CLOSURES | INDEX 102-661 | SHEET 2 of 2 |
|---------------------------|----------|--------------|--|------------------------------|---------------------------|------------------|-----------------|