

Origination Form

Proposed Revisions to a Standard Plans Index

Originator:	McGinnis, James	Index Number:	102-661
Date:	5/8/2024	Sheet Number(s):	1 and 2
E-mail:	James.McGinnis@dot.state.fl.us	Index Title:	BICYCLE FACILITY CLOSURES

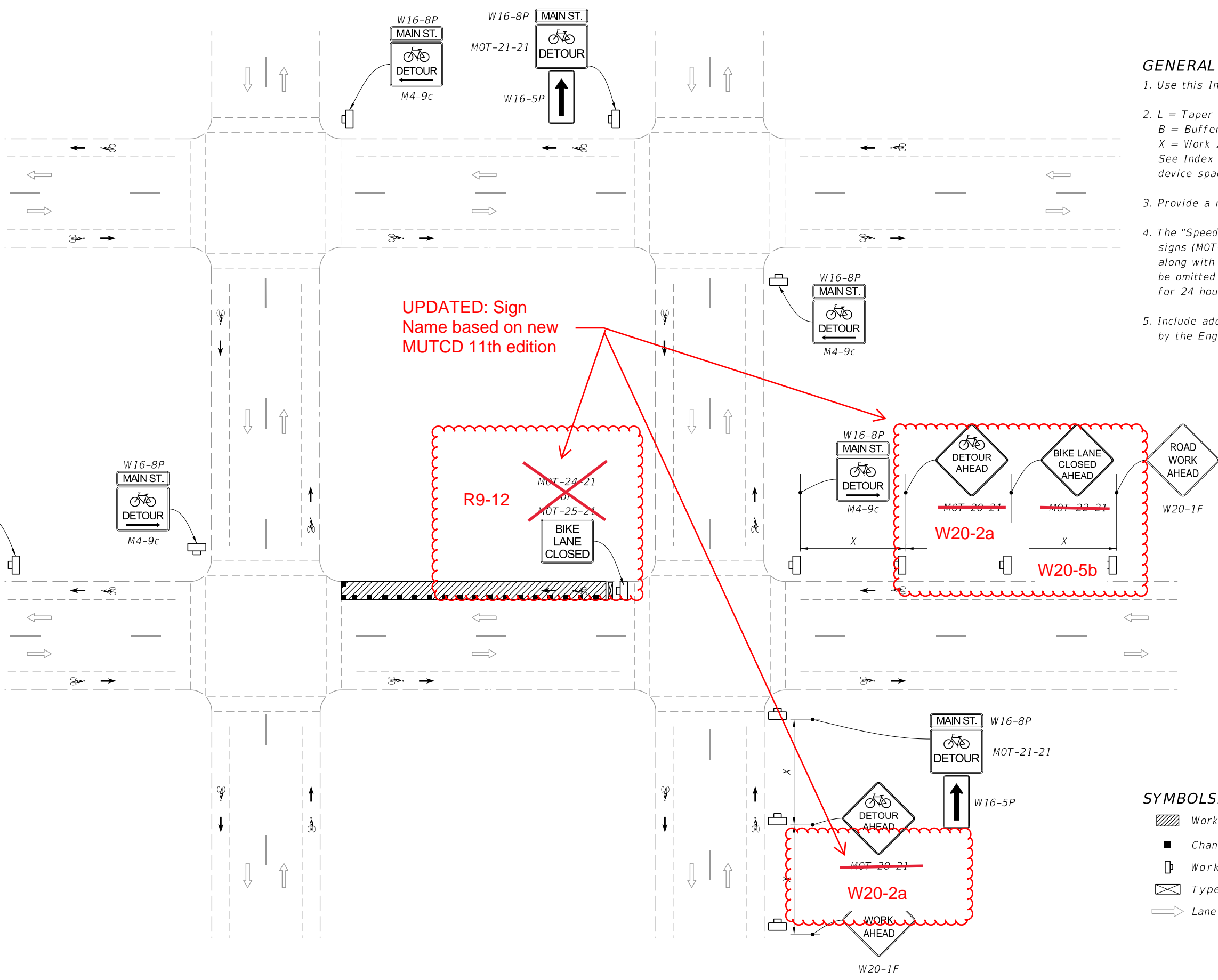
Summary of the changes:
Sheet 1: Updated sign names based on new MUTCD 11th edition
Sheet 2: Updated sign names based on new MUTCD 11th edition. Updated signs W16-1P detail. Updated "Bikes Merge" sign.

Commentary/Background:
Sign names and graphics updated to be in compliance with the new MUTCD 11th Edition.

Other Affected Documents/Offices	Person Contacted	Affected (Yes/No)
Other Standard Plans	Darren Martin	Yes
FDOT Design Manual		No
Standard Specifications		No
Basis of Estimates Manual		No
Approved Product List		No
Construction Office		No
Maintenance Office		No

Implementation
["FY-Standard Plans (Next Release)"]

9/28/2023 8:39:29 AM



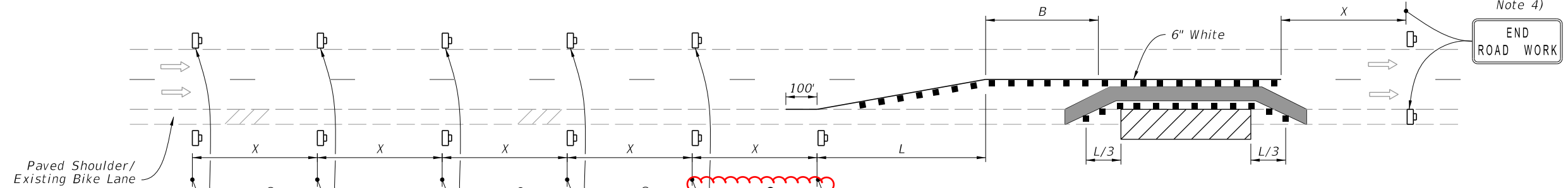
- GENERAL NOTES:**
1. Use this Index only when called for in the Plans.
 2. L = Taper Length
B = Buffer Length
X = Work Zone Sign Distance
See Index 102-600 for "L", "B", "X", channelizing device spacing values.
 3. Provide a minimum 5'-0" wide bicycle path.
 4. The "Speeding Fines Doubled When Workers Present" signs (MOT-13-06) and "End Road Work" signs (G20-2), along with associated work zone sign distances, may be omitted when the work operation will be in place for 24 hours or less.
 5. Include additional signage at intersections as required by the Engineer or shown in the Plans.

- SYMBOLS:**
- Work Area
 - Channelizing Device (See Index 102-600)
 - Work Zone Sign
 - Type III Barricade
 - Lane Identification and Direction of Traffic

=====**BICYCLE DETOUR**=====

11/01/24

<p>LAST REVISION 11/01/21</p>	<p>REVISION DESCRIPTION:</p>	<p> FY 2024-25 STANDARD PLANS</p>	<p>BICYCLE FACILITY CLOSURES</p>	<p>INDEX 102-661</p>	<p>SHEET 1 of 2</p>
----------------------------------------------	------------------------------	----------------------------------------------	-----------------------------------------	---------------------------------	--------------------------------



NOTES:

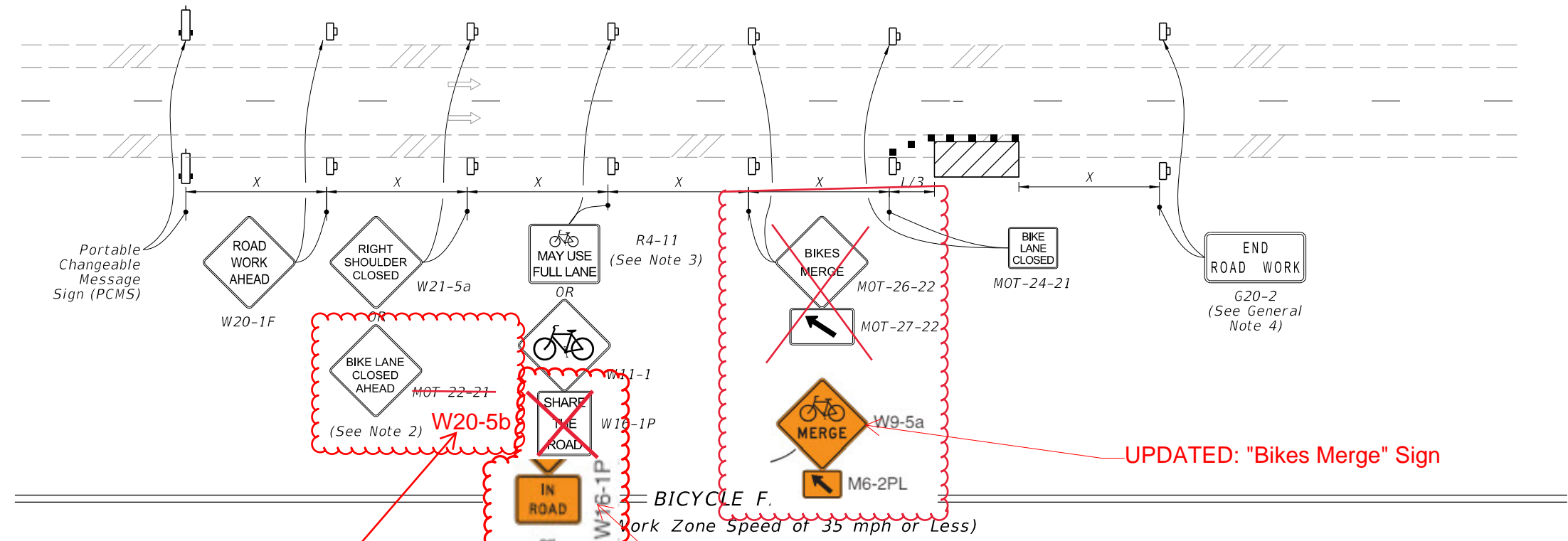
- 1. Temporary pavement markings may be omitted when the work operation is in place for 3 days or less.
- 2. If the Closed Bicycle Facility is a marked bicycle lane, use sign MOT 22-21 instead of sign W21-5a.
- 3. If the travel lane is less than 14' wide, use sign R4-11.

UPDATED: Sign Name based on new MUTCD 11th edition

SYMBOLS:

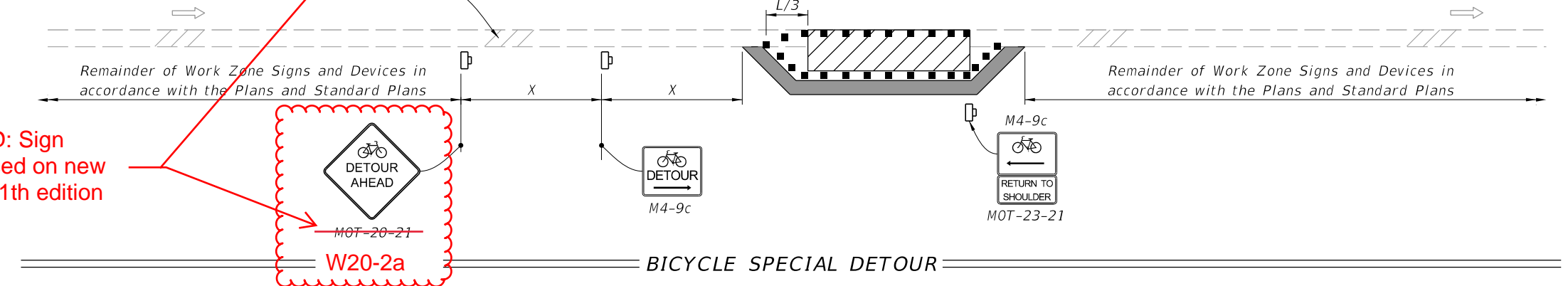
- Work Area
- Temporary Bicycle Way
- Channelizing Device (See Index 102-600)
- Work Zone Sign
- Arrow Board
- Lane Identification and Direction of Traffic
- (1) PCMS=Portable Changeable (Variable) Message Sign

BICYCLE FACILITY SHIFT (With Lane Closure)



UPDATED: "Bikes Merge" Sign

BICYCLE F. Work Zone Speed of 35 mph or Less



UPDATED: Sign Name based on new MUTCD 11th edition

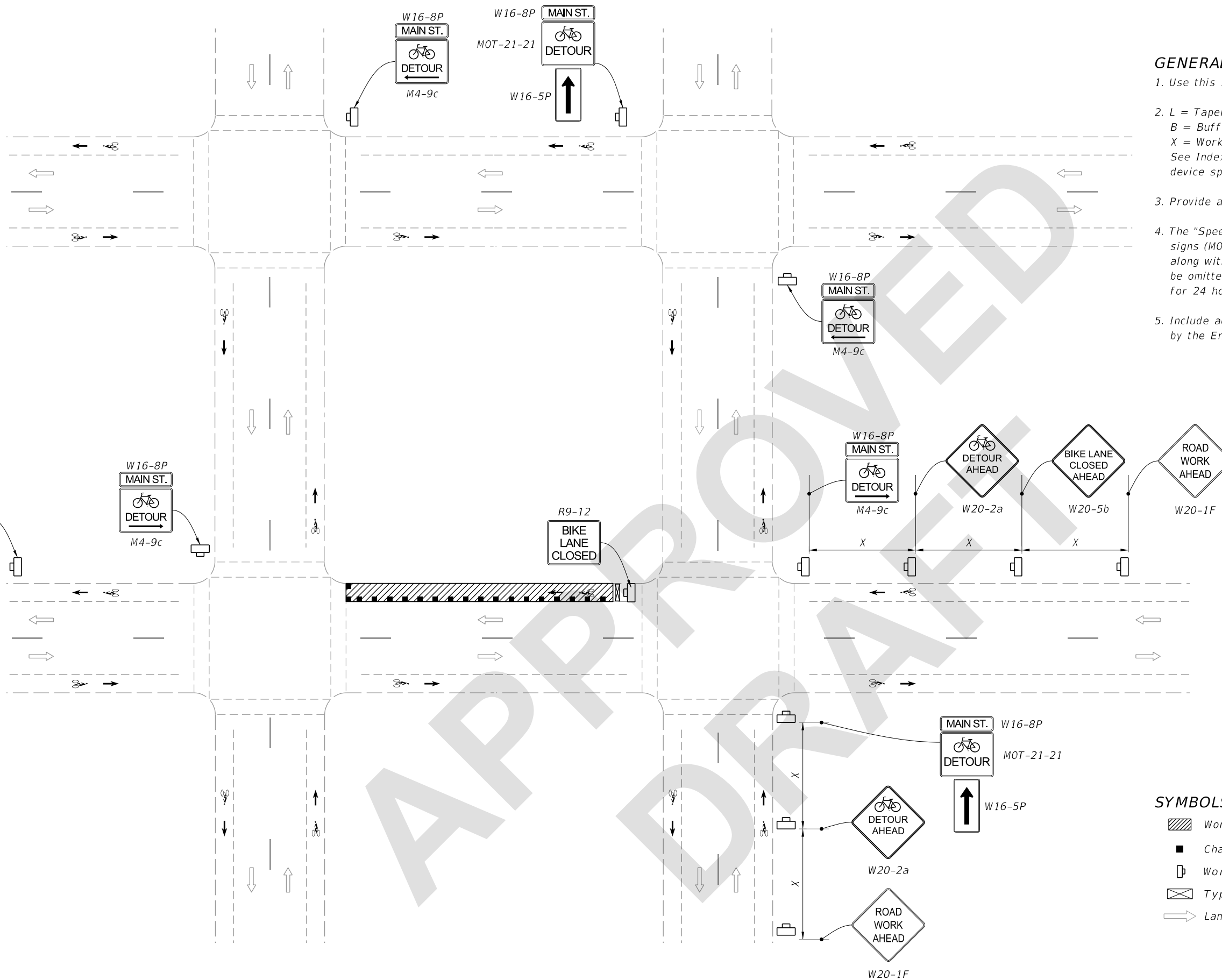
TYPICAL PCMS DISPLAY:
Message 1: BIKE FACILITY CLOSED
Message 2: BICYCLES ON ROAD

11/01/24

9/28/2023 8:39:33 AM

LAST REVISION II/01/21	REVISION	DESCRIPTION:	<p>FY 2024-25 STANDARD PLANS</p>	<p>BICYCLE FACILITY CLOSURES</p>	INDEX 102-661	SHEET 2 of 2
---------------------------	----------	--------------	--------------------------------------	----------------------------------	------------------	-----------------

6/17/2024 1:07:59 PM



GENERAL NOTES:

1. Use this Index only when called for in the Plans.
2. L = Taper Length
B = Buffer Length
X = Work Zone Sign Distance
See Index 102-600 for "L", "B", "X", channelizing device spacing values.
3. Provide a minimum 5'-0" wide bicycle path.
4. The "Speeding Fines Doubled When Workers Present" signs (MOT-13-06) and "End Road Work" signs (G20-2), along with associated work zone sign distances, may be omitted when the work operation will be in place for 24 hours or less.
5. Include additional signage at intersections as required by the Engineer or shown in the Plans.

SYMBOLS:

- Work Area
- Channelizing Device (See Index 102-600)
- Work Zone Sign
- Type III Barricade
- Lane Identification and Direction of Traffic

=====**BICYCLE DETOUR**=====

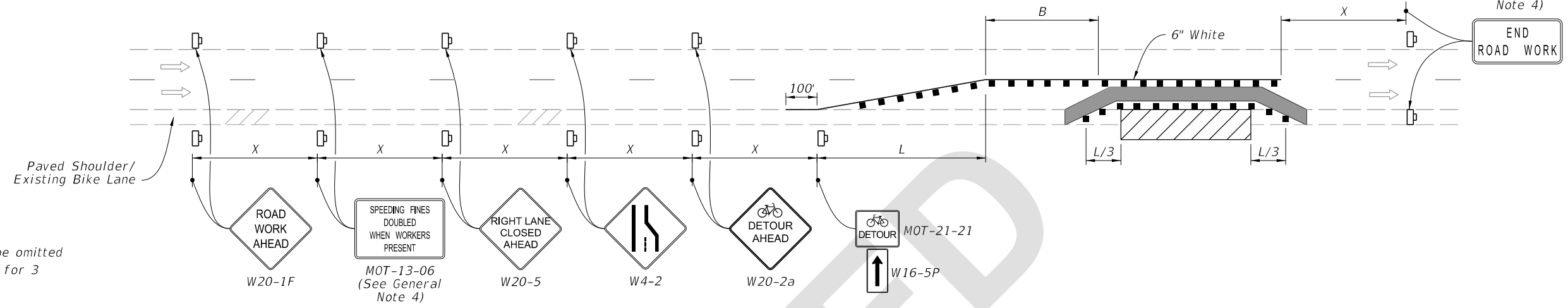
LAST REVISION 11/01/24	REVISION	DESCRIPTION:
------------------------------	----------	--------------

**FY 2025-26
STANDARD PLANS**

BICYCLE FACILITY CLOSURES

INDEX 102-661	SHEET 1 of 2
-------------------------	------------------------

G20-2
(See General
Note 4)

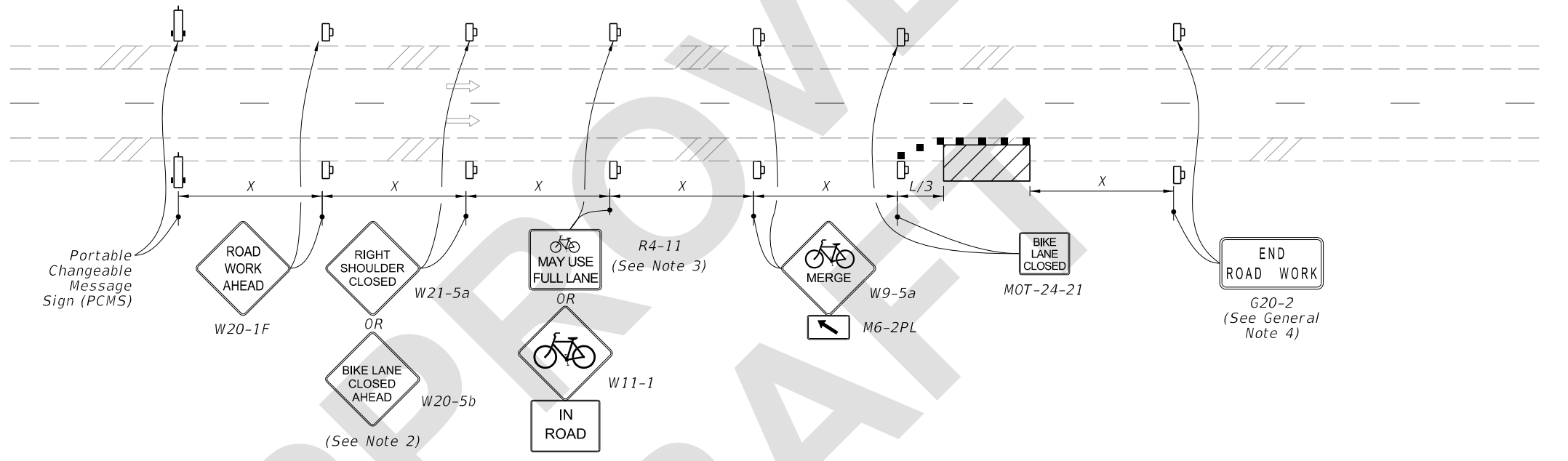


- NOTES:**
1. Temporary pavement markings may be omitted when the work operation is in place for 3 days or less.
 2. If the Closed Bicycle Facility is a marked bicycle lane, use sign MOT 22-21 instead of sign W21-5a.
 3. If the travel lane is less than 14' wide, use sign R4-11.

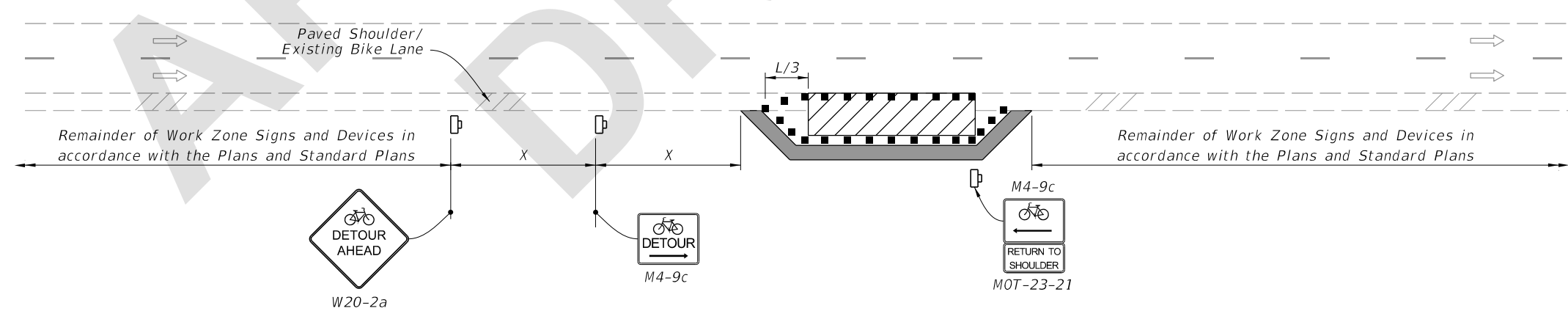
SYMBOLS:

- Work Area
- Temporary Bicycle Way
- Channelizing Device (See Index 102-600)
- Work Zone Sign
- Arrow Board
- Lane Identification and Direction of Traffic
- (1) PCMS=Portable Changeable (Variable) Message Sign

**BICYCLE FACILITY SHIFT
(With Lane Closure)**



**BICYCLE FACILITY SHIFT
(Work Zone Speed of 35 mph or Less)**



TYPICAL PCMS DISPLAY:
 Message 1: BIKE FACILITY CLOSED
 Message 2: BICYCLES ON ROAD

BICYCLE SPECIAL DETOUR

6/17/2024 1:08:09 PM