
Index 715-002 STANDARD ALUMINUM LIGHTING

ORIGINATION

Date: May 19, 2023

Name: Richard Stepp

Phone: (850) 414-4313

Email: Richard.Stepp@dot.state.fl.us

COMMENTARY

Sheet 4: A non-circular, octagon shaft option was requested by industry to simplify formwork.

Sheet 5: At the request of the Districts, a grout pad is added to assist with constructability and leveling of the light pole.

Sheet 6: Changing non-standard language to standard language consistent with AWS. Spec 460 will accompany the revision. This revision is being managed by Josh Turley in the SDO.

COMMENTS AND RESPONSES

BLACK = Industry Review Comments **BLUE** = Standard Plans Response **GREEN** = Change Made to Index

Name: Ryan Gray

Date: 6/15/2023

COMMENT: The installation steps for a grout pad under Spec 649 indicate that it is installed after the pole (as the last step). Will the proposed grout pad on the spread footing be installed before any poles are mounted?

RESPONSE: Yes. The grout pad may be installed before the pole is mounted, so it's agreed that Spec 649 is too limiting regarding construction sequence. As a result, the note 9 reference will be changed from Spec 649 to Spec 934.

CHANGE MADE TO INDEX: Yes.

Response Date: 6/20/2023

Name: Dongming White

Date: 7/19/2023

COMMENT: Suggest to change term to "Structural Level Pad". Modify Note 9 as followings:
Cast Structural Level Pad monolithically with the spread footing by using the same concrete as that of the spread footing. Level the top of the pad flat to be within 1/16 in for a square of minimum size of 1'-6" by 1'-6" centered to the centerline of the pole. Gradually transition to the slope of the connecting sidewalk. Change frangible base anchor bolt to 1" as discussed with D6.

RESPONSE: The intention is to use a grout pad and not concrete. The design is not solely based on D6 input, but the original D6 designs called for a grout pad. The "grout pad" term is OK as is. Next, the sidewalk construction method is correct as described in the original revision. For the best product, the sidewalk surface will first be constructed to establish the cross slope. A grout pad will then be added and leveled afterwards. Note 9 is OK as is.

CHANGE MADE TO INDEX: No.

Response Date: 7/25/2023

Name: Dongming White

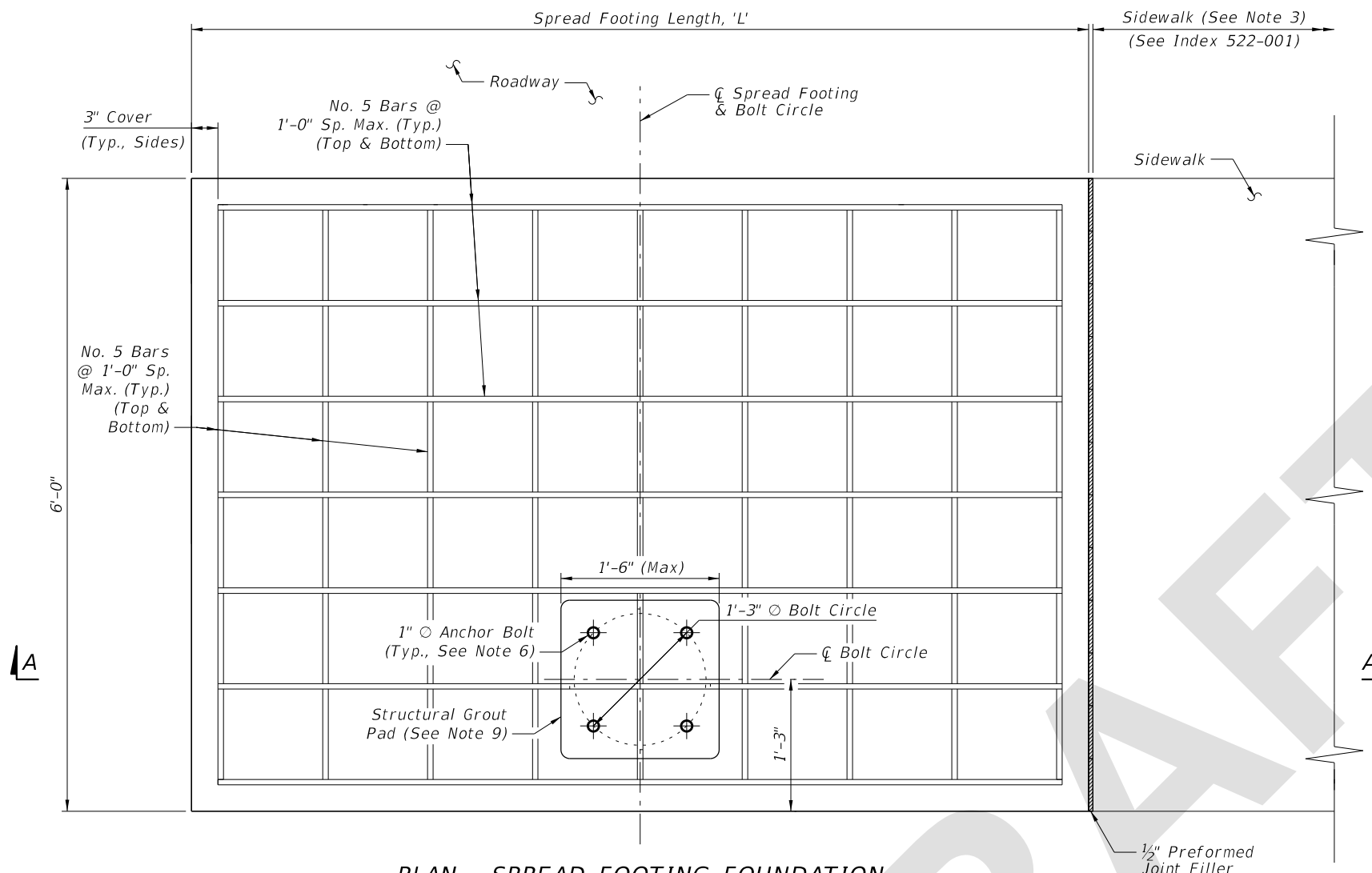
Date: 7/19/2023

COMMENT: Change frangible base anchor bolt to 1".

RESPONSE: Agreed. The anchor bolt will be changed to 1" diameter for better alignment with transformer base designs.

CHANGE MADE TO INDEX: Yes.

Response Date: 7/25/2023

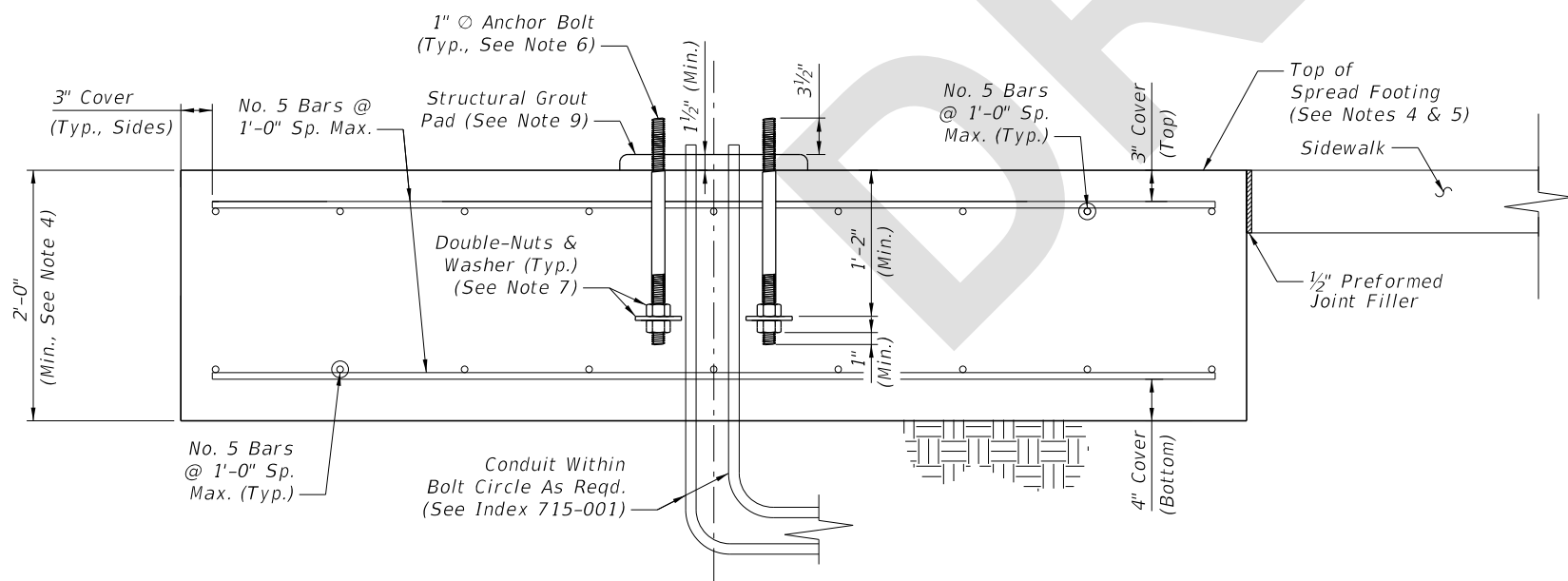


PLAN - SPREAD FOOTING FOUNDATION

SPREAD FOOTING LENGTH, 'L'			
Mounting Height (Ft.)	Wind Speed (All Arm Lengths)		
	120 mph	140 mph	160 mph
20	4'-6"	5'-0"	6'-0"
25	4'-6"	5'-0"	6'-0"
30	7'-0"	7'-0"	7'-0"
35	7'-0"	7'-0"	7'-0"
40	7'-0"	7'-0"	10'-0"
45	8'-6"	10'-0"	10'-0"
50	8'-6"	10'-0"	11'-6"

NOTES:

1. Install the Spread Footing Foundation Option only where called for in the Plans.
2. The Spread Footing Foundation Option is only permitted for use with single arm or top mount light poles. Where applicable, the pole arm must be oriented towards the roadway side of the footing as shown. Double arm configurations are not permitted.
3. Sidewalk placed on the other side or both sides of the spread footing is permitted where shown in the Plans. The sidewalk connection to spread footing requires the 1/2" expansion joint shown regardless of the side.
4. The top of the spread footing must match the cross slope of the adjacent sidewalk where applicable per the Plans. The nominal bottom of the spread footing must remain level.
5. Apply concrete surface finish to the top of the spread footing in accordance with Specification 522-7.
6. Mount the anchor bolts plumb. For the corresponding pole base details, see Sheet 4.
7. Place galvanized or zinc-plated steel washers with a minimum thickness of 1/4". Use washers with a minimum size of 3 1/2" diameter round or 3"x3" square.
8. Where raised curb is called for in the Plans, provide a tooled cold joint with bond breaker between the foundation and back of raised curb. See Sheet 2 and the connection between concrete sidewalk and raised curb per Index 522-001.
9. Place a structural grout pad in accordance with Specification 934. The grout pad is square and centered on the bolt circle centerlines. Level the top of the grout pad and smooth the edges and corners per the approval of the Engineer. Install the transformer base in accordance with Sheet 4 and the manufacturer's specifications.



SECTION A-A - SPREAD FOOTING FOUNDATION ELEVATION

SPREAD FOOTING FOUNDATION OPTION

7/26/2023 2:29:11 PM