

---

## Index 700-120 Enhanced Highway Signing Assemblies

### ORIGINATION

**Date:** July 5, 2023

**Name:** Rick Jenkins

**Phone:** (850) 414-4355

**Email:** Rick.Jenkins@dot.state.fl.us

### COMMENTARY

The districts have requested a spread footing foundation option be added.

Three new Railroad Highlighted sign assemblies are being added as a result of input from the Rail Safety Task Team.

### COMMENTS AND RESPONSES

**BLACK** = Industry Review Comments    **BLUE** = Standard Plans Response    **GREEN** = Change Made to Index

**Name:** Derwood Sheppard

**Date:** 8/24/2023

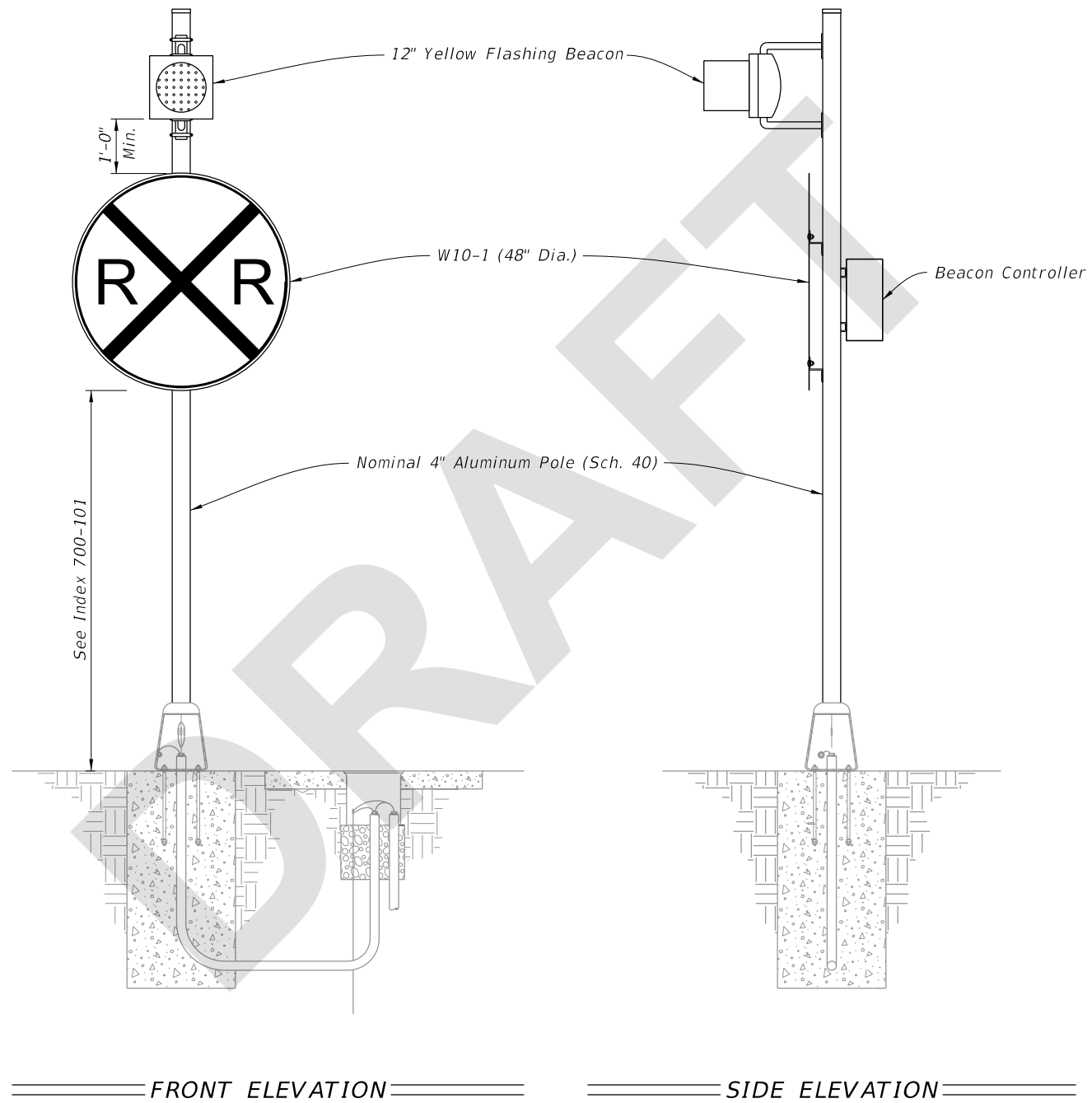
**COMMENT:** New "Roadside Sign Assembly-9" should not have a highlighted W10-1 sign. It should be a standard W10-1 sign with the Yellow Flashing Beacon. No need to combine a highlighted sign with a beacon.

**RESPONSE:** Agree. We will remove the highlighted part from the index.

**CHANGE MADE TO INDEX:** Yes.

*Response Date: 8/24/2023*

9/20/2023 10:51:00 AM



**NOTES:**

- 1. Type A9 Assembly (conventionally powered) is shown.  
Type B9 Assemblies (solar powered) similar.
- 2. Foundation reinforcement not shown.

**ROADSIDE SIGN ASSEMBLY-9**

LAST REVISION 11/01/23	DESCRIPTION:
---------------------------	--------------



FY 2024-25  
STANDARD PLANS

ENHANCED HIGHWAY SIGNING ASSEMBLIES

INDEX  
700-120

SHEET  
12 of 15