
Index 649-031 Mast Arm Assemblies

ORIGINATION

Date: March 24, 2023

Name: Joshua Turley

Phone: (850) 414-4475

Email: Joshua.Turley@dot.state.fl.us

COMMENTARY

Sheet 1: Changing non-standard language to standard language consistent with AWS.

Sheet 3: Fabricators were having a problem getting the required splice length due to the diameters of the splice sections. We added some tolerance so that they could more easily attain the required splice length.

Sheet 4: Changing non-standard language to standard language consistent with AWS.

Sheet 6: Changing non-standard language to standard language consistent with AWS.

Spec 460 will accompany the revisions.

COMMENTS AND RESPONSES

BLACK = Industry Review Comments **BLUE** = Standard Plans Response **GREEN** = Change Made to Index

Name: David Bancroft

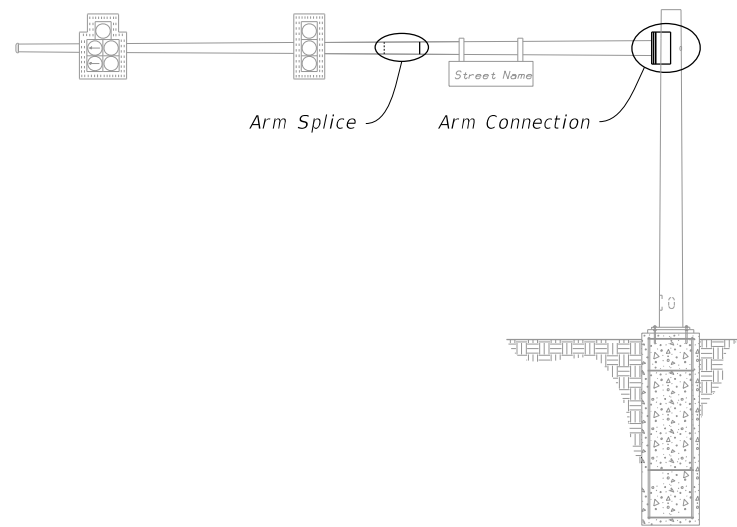
Date: 7/13/2023

COMMENT: On sheet 3 of 6, note 4 should state "...to meet the required 2'-0" minimum lap splice." The 3'-0" length is the nominal or design length, but 2'-0" is the minimum length.

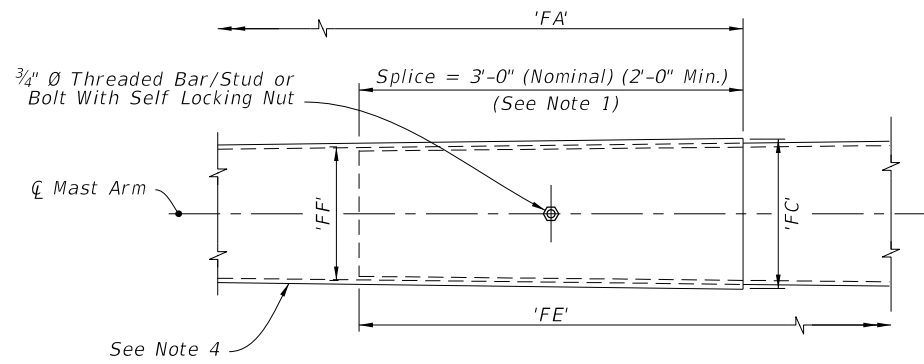
RESPONSE: Good catch! We will fix that.

CHANGE MADE TO INDEX: Yes, the length was changed from 3'-0" to 2'-0".

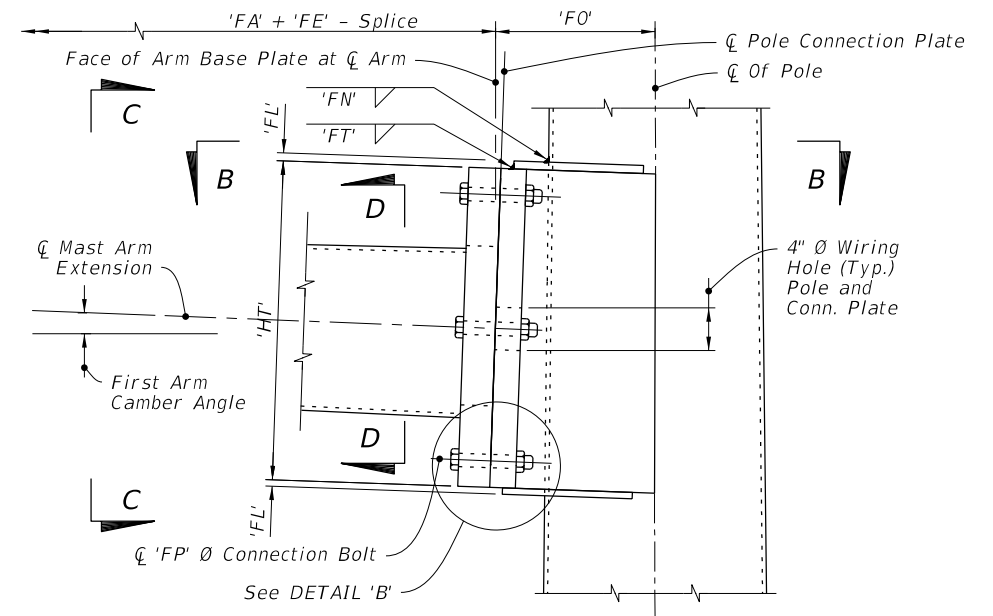
Response Date: 7/13/2023



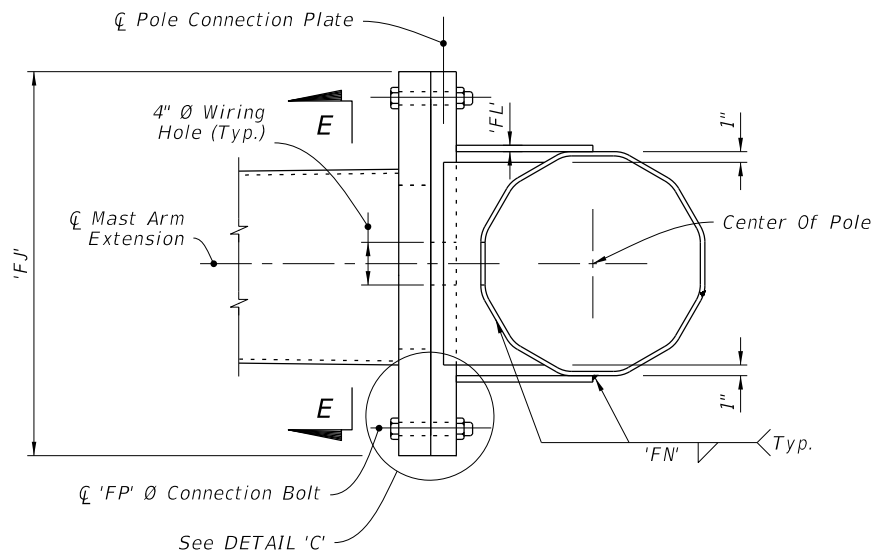
MAST ARM ASSEMBLY



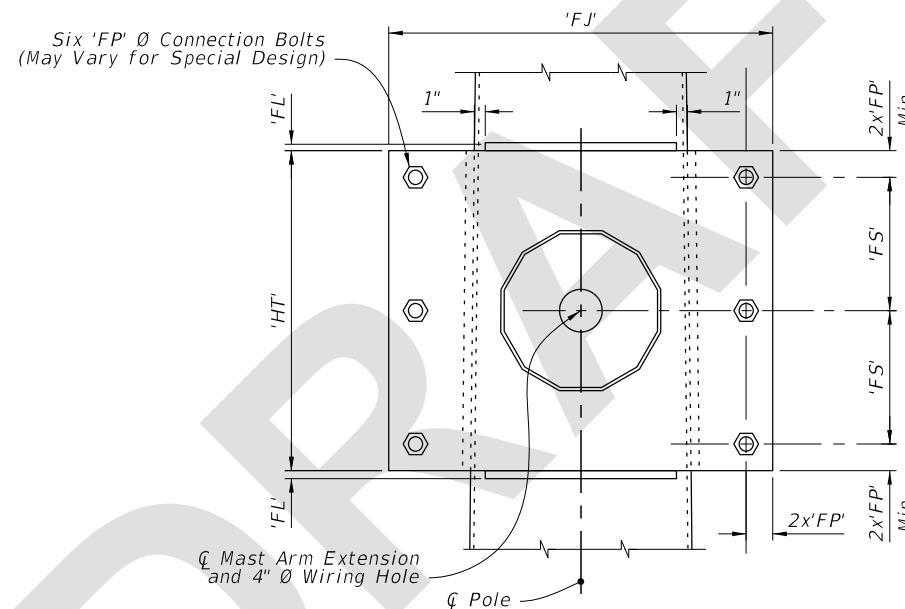
ARM SPLICE



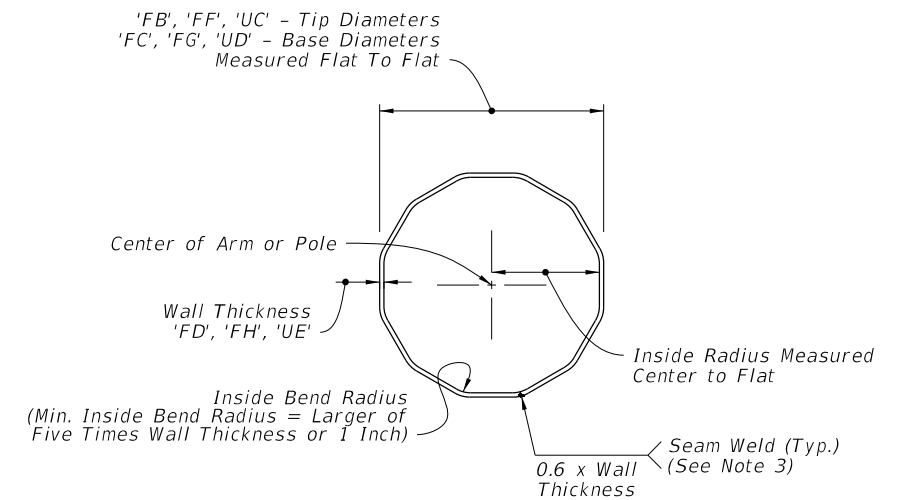
SINGLE ARM CONNECTION



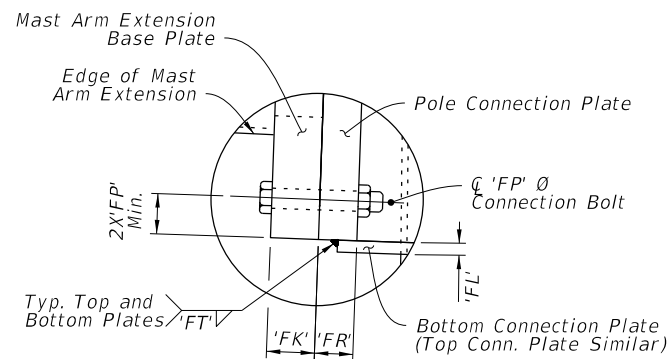
SECTION B-B



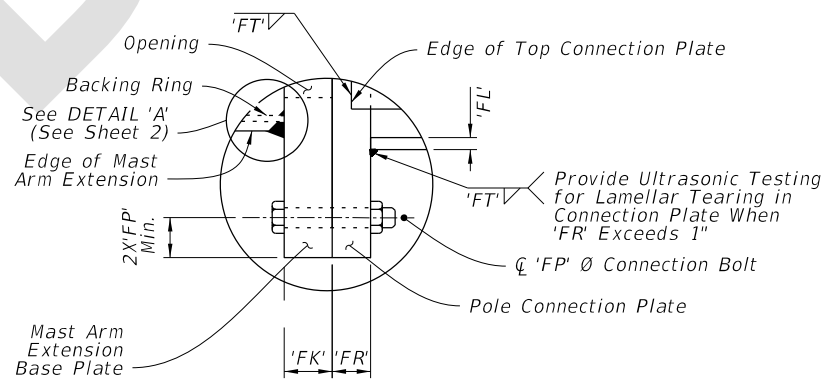
SECTION C-C



SECTION D-D



DETAIL B



DETAIL C

NOTES:

1. Install the 'Slip Joint' splice with a tight fit and no change in the Mast Arm taper due to the splice.
2. Details shown on this sheet are for 12 sided pole sections. However, sections with more than 12 sides and round sections are permitted provided outside diameter and wall thickness are not reduced.
3. Match mark the Arm and Connection Plates to ensure proper assembly and the seam weld is in the proper location (seam located at the bottom side of the Arm).
4. On the outer mast arm section, the manufacturer may increase both the tip diameter and the base diameter of the female section of the splice by up to 1/8" to meet the required 2'-0" minimum lap splice.

SINGLE ARM CONNECTIONS & SPLICE DETAILS

8:36:17 AM
7/13/2023

LAST REVISION 11/01/23	REVISION	DESCRIPTION:	 FY 2024-25 STANDARD PLANS	MAST ARM ASSEMBLIES	INDEX 649-031	SHEET 3 of 6
---------------------------	----------	--------------	---	---------------------	------------------	-----------------