
Index 550-012 Bridge Fencing (Enclosed)

ORIGINATION

Date: March 22, 2023

Name: Josh Turley

Phone: (850) 414-4475

Email: Joshua.Turley@dot.state.fl.us

COMMENTARY

An email came it that highlighted that the calculated dimensions do not match the Standard. It was determined that the dimensions were not required as they vary and recording them to the 1/8" would not be an ideal solution.

Sidewalk may have special FDM connotations. Therefore, we used a more general term.

Standard allows for extension of the fencing for larger widths but those widths are not unlimited so we added a maximum of 12 ft.

COMMENTS AND RESPONSES

BLACK = Industry Review Comments **BLUE** = Standard Plans Response **GREEN** = Change Made to Index

Name: Keith Krieger

Date: 7/11/2023

COMMENT: Please reconsider the RENAMING of these Indexes.....to avoid confusion.

Index 550-010 (which is not being revised) shows vertical bridge fencing on Traffic Railing Barrier and on Concrete Parapet.

The revisions propose to RENAME:

Index 550-011 to "Bridge Fencing on Parapet"

Index 550-103 to "Bridge Fencing on Barrier"

Such that it is confusing how these Indexes are different from 550-010...or are meant to supplement 550-010.

In addition, FDM Section 222.4.1 and Figures 222.4.2 thru 222.4.8 include similar details and "sidewalk" terminology.....that should be coordinated with these proposed revisions to the Standard Plans.

Please let me know if any questions.

I will make DeWayne Carver aware of the possible need to revise FDM Chapter 222.

RESPONSE: Agreed. Will rename 550-011 to "Bridge Fencing on a Parapet (Curved Top)" and 550-013 "Bridge Fencing on a Barrier (Curved Top)" in order to distinguish them from the Vertical version. The term "pathway" was used as a more general term to encompass both sidewalks and shared use paths that may be used with this Standard. We did not want to limit to either a sidewalk or shared use path.

CHANGE MADE TO INDEX: No

Response Date: 7/11/2023

Name: Keith Krieger

Date: 7/11/2023

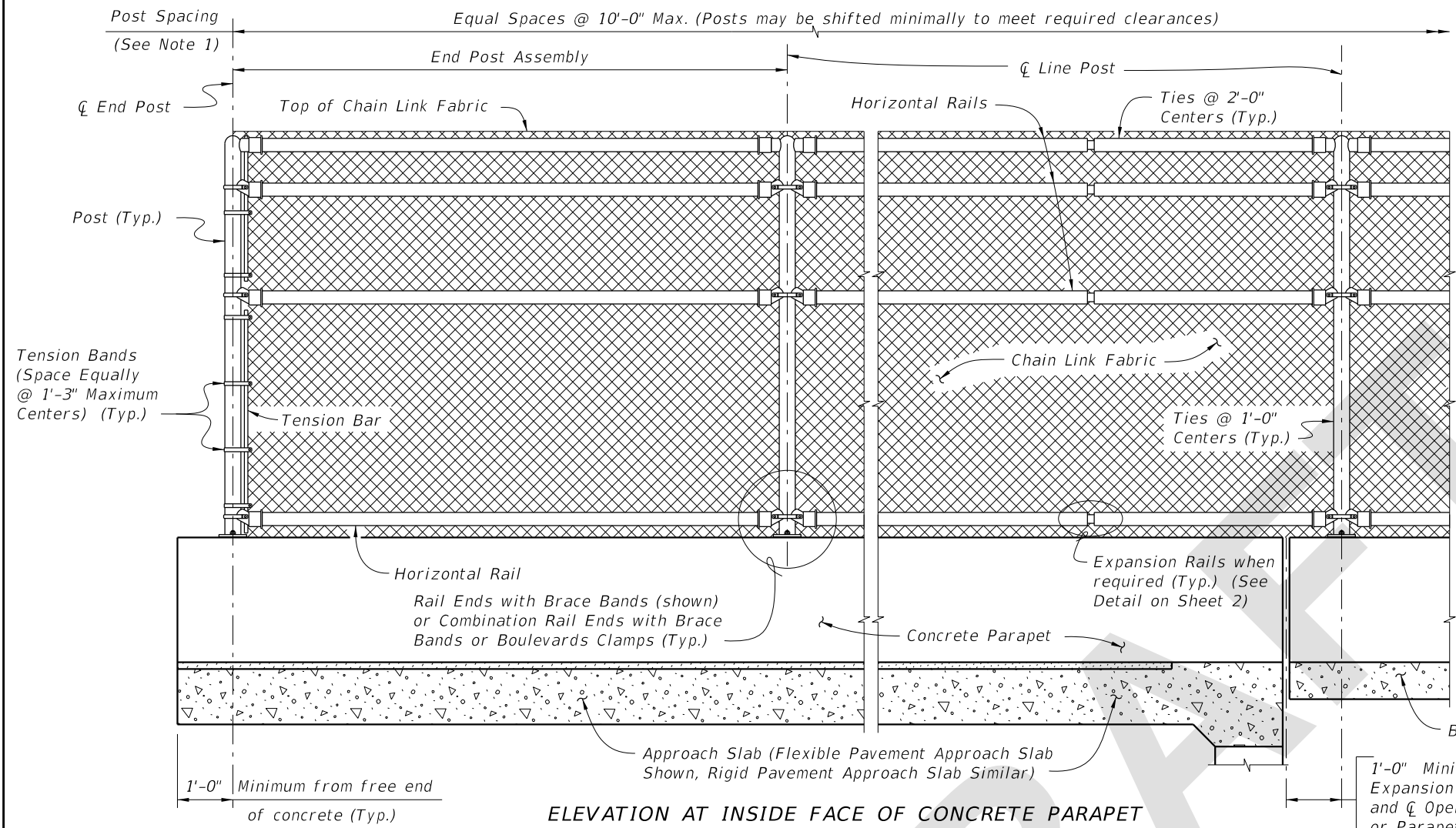
COMMENT: On the righthand side of sheet 1 of 4, please replace the dimension line that was mistakenly deleted

On sheet 4 of 4, please fix the sheet border

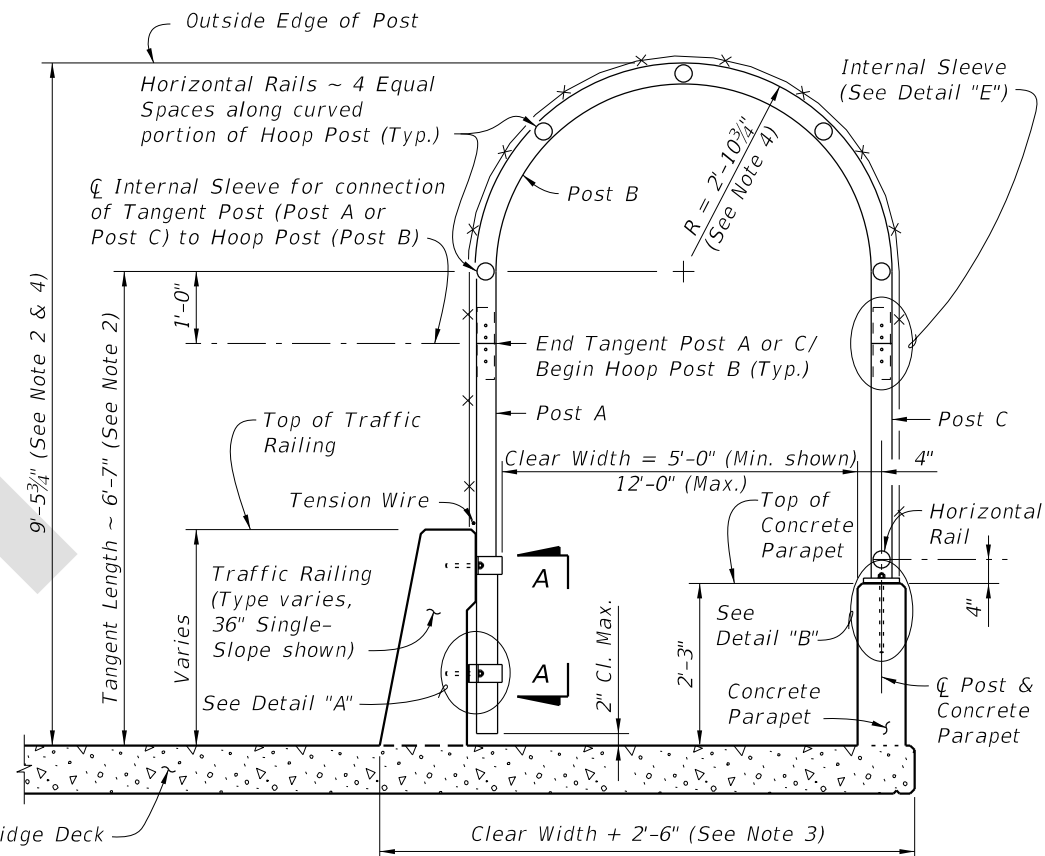
RESPONSE: Agreed. Will fix.

CHANGE MADE TO INDEX: Yes, replaced dimension line and fixed border.

Response Date: 7/11/2023



ELEVATION AT INSIDE FACE OF CONCRETE PARAPET



TYPICAL SECTION

- NOTES:
1. A Pull Post Assembly is required at maximum intervals of 500'-0". See Sheet 3.
 2. Dimension is measured along Inside Face of Concrete Parapet.
 3. Dimension shown is for 36" Single-Slope Traffic Railings as shown in Index 521-427. Adjust as required for other Traffic Railing Barriers and sidewalk widths.
 4. For pathway clear widths greater than 5'-0", increase the radius of Post B and the length of Post A & C at the rate of 6" for every one foot increase in pathway width.

FENCING NOTES

FENCE INSTALLATION:
Install posts plumb (within a tolerance of $\pm 1\frac{1}{2}$ "). Use shim plates as required to achieve plumb. The required quantity and thickness of shim plates will be determined in the field. Install chain link fence in accordance with ASTM F567 as applicable.

TRAFFIC RAILING DETAILS:
See Superstructure Sheets for Traffic Railing details.


CONCRETE PARAPET DETAILS:
See Index 521-820 - Pedestrian/Bicycle Railing for Concrete Parapet details. Provide fencing in lieu of aluminum bullet railing as shown on Index 521-820.

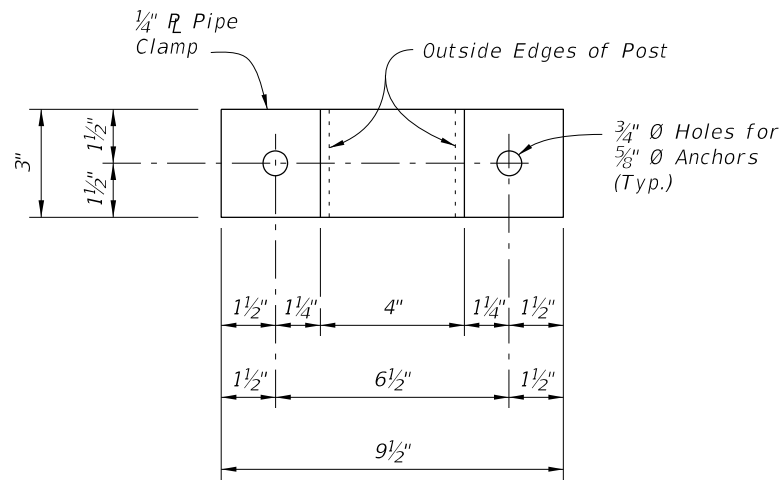
LIMITS OF FENCING:
Limits of fencing are from begin of approach slab at Begin Bridge to end of approach slab at End Bridge, unless otherwise shown in the plans.

PAYMENT:
Payment will be made under Fencing, Type R. Payment includes posts, horizontal and expansion rails, brace bands, rail ends, combination rail ends, boulevard clamps, chain link fabric, tension wire, ties, hog rings, tension bars and bands, pipe clamps, base plates, anchor rods, bolts, nuts, washers, shim plates, spacers, neoprene pads, miscellaneous fence fittings and hardware and all incidental materials and labor required to complete installation of the fence.

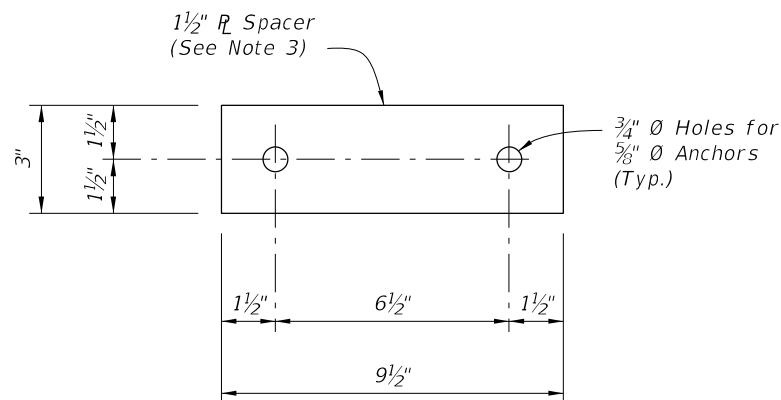
CROSS REFERENCE:
For Table of Fence Components and Table of Post Attachment Components see Sheet 2.
For Pull Post Assembly Detail, View A-A and Detail "A" see Sheet 3.
For Detail "B" and "E" see Sheet 4.

7/11/2023 1:16:53 PM

LAST REVISION	11/01/23	DESCRIPTION:	 FY 2024-25 STANDARD PLANS	BRIDGE FENCING (ENCLOSED)	INDEX 550-012	SHEET 1 of 4
---------------	----------	--------------	---	---------------------------	------------------	-----------------

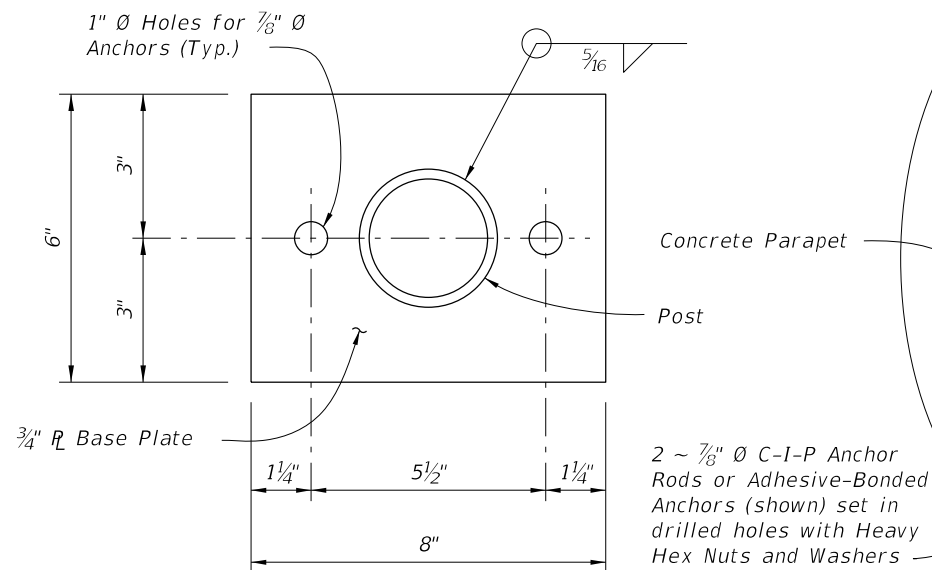


PIPE CLAMP DETAIL

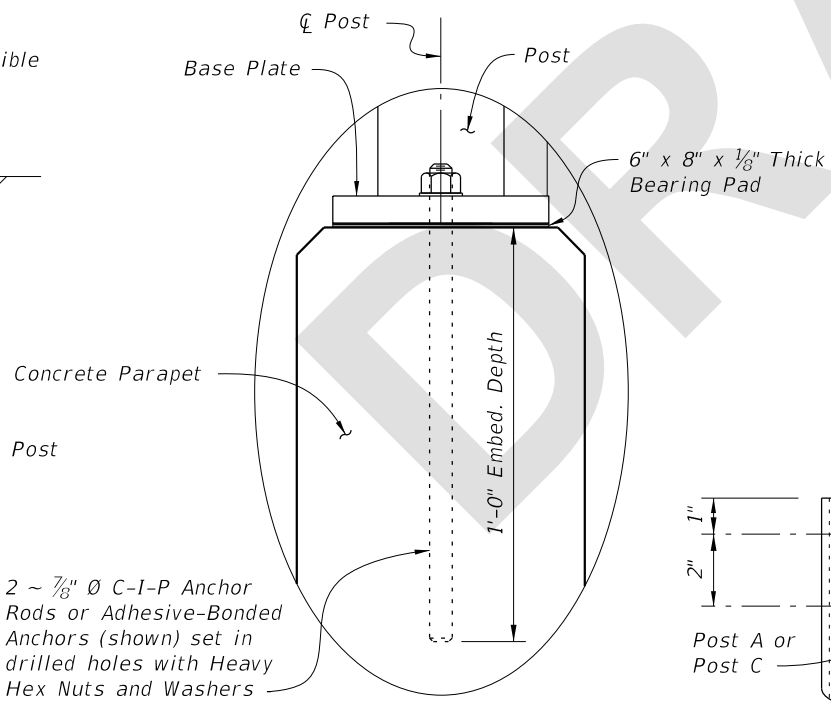


SPACER DETAIL

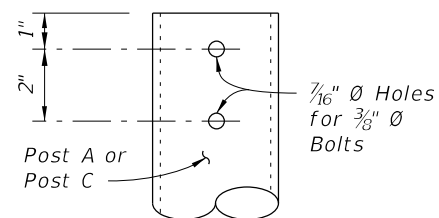
(Must be manufactured from an incompressible material (i.e. steel or aluminum))



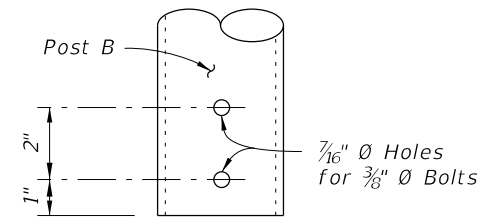
BASE PLATE DETAIL



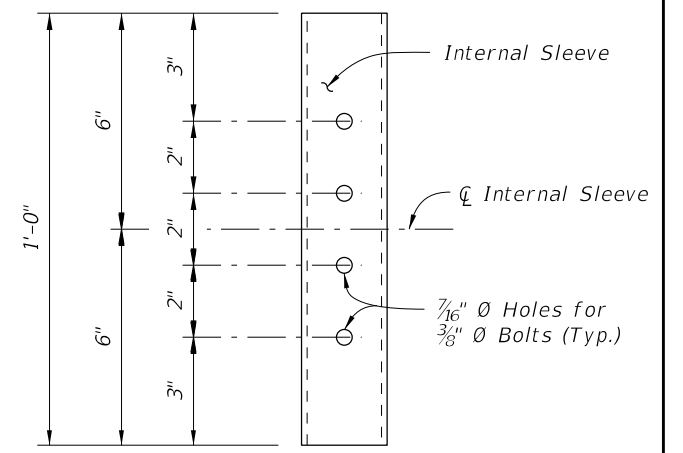
DETAIL "B"



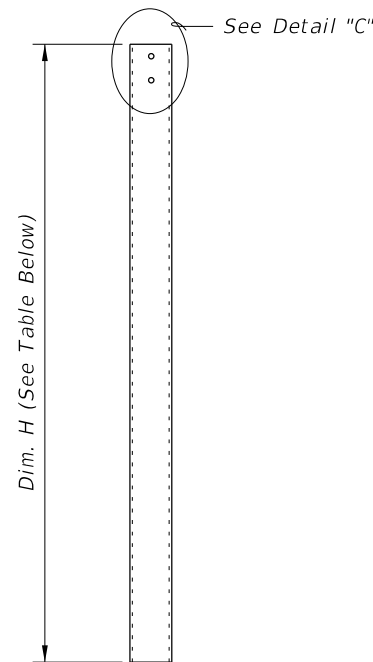
DETAIL "C"



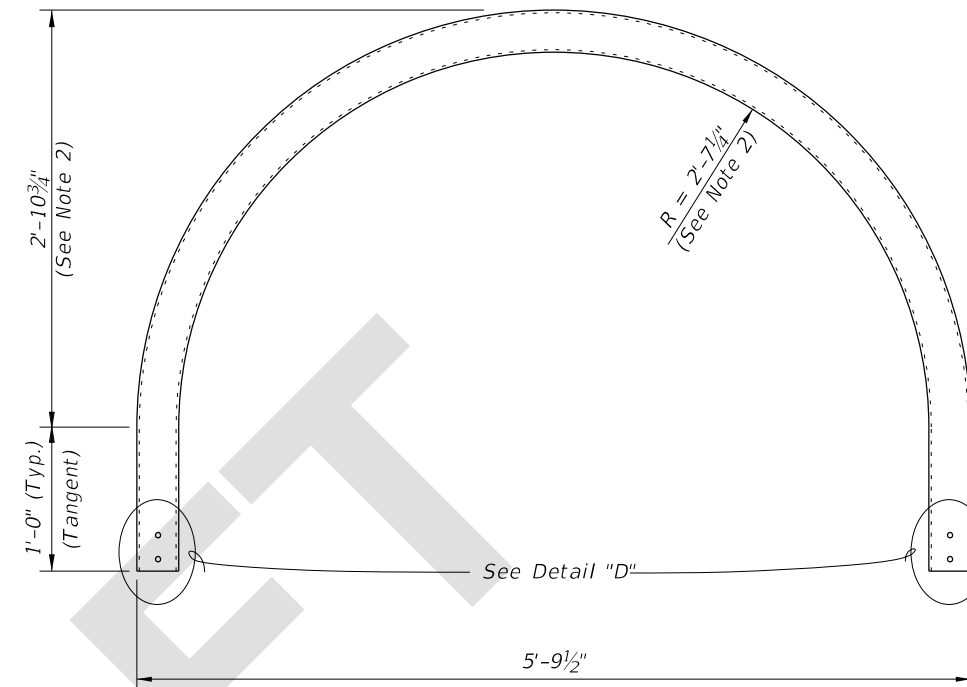
DETAIL "D"



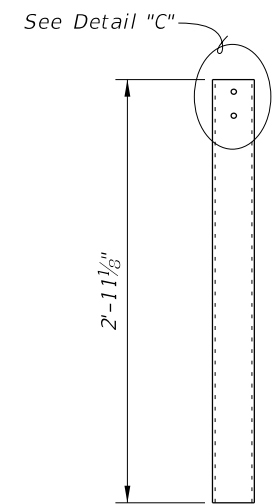
DETAIL "E"
(INTERNAL SLEEVE DETAIL)



POST A DETAIL



POST B DETAIL



POST C DETAIL

PATHWAY CROSS-SLOPE	DIM. H (See Note 1)
2% Left	5'-6 1/4"
2% Right	5'-3 3/4"

NOTES:

- Values shown for Dim. H are for a 5'-0" clear pathway width. Adjust as required for clear pathway widths greater than 5'-0".
- For clear pathway widths greater than 5'-0" increase radius and height by 6" for every one foot increase in pathway width.
- Spacer plate thickness shown is for Single-Slope Traffic Railings. Adjust thickness as required for other Traffic Railings.

CROSS REFERENCE:

For location of Details "B" and "E" see Sheet 1.

7/11/2023 12:03:41 PM

LAST REVISION 11/01/23	REVISION	DESCRIPTION:		FY 2024-25 STANDARD PLANS	BRIDGE FENCING (ENCLOSED)	INDEX 550-012	SHEET 4 of 4
---------------------------	----------	--------------	--	------------------------------	---------------------------	------------------	-----------------