

---

## Index 450-511

### Bearing Plates (Type 1) – Prestressed Florida-I and AASHTO Type II Beams

#### ORIGINATION

**Date:** March 22, 2023

**Name:** Josh Turley

**Phone:** (850) 414-4475

**Email:** Joshua.Turley@dot.state.fl.us

#### COMMENTARY

We got an email in noting that dimension L was called out incorrectly not accounting for the skew. They also asked what a negative dimension meant for the AASHTO Beam anchor studs. We decided to add clarity for the negative dimension whose purpose was to have the anchor studs in a single row for the AASHTO Beam Type 2 although in plan its shown as multiple rows for the sake of using one detail for multiple configurations.

#### COMMENTS AND RESPONSES

**BLACK** = Industry Review Comments    **BLUE** = Standard Plans Response    **GREEN** = Change Made to Index

**Name:** Keith Krieger

**Date:** 7/11/2023

**COMMENT:** New Note 10 should read..... "negative dimensions indicate"....rather than "indicates".  
Delete the "s".

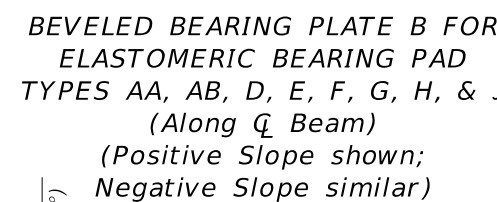
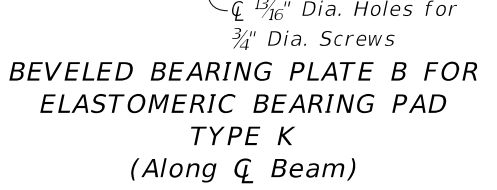
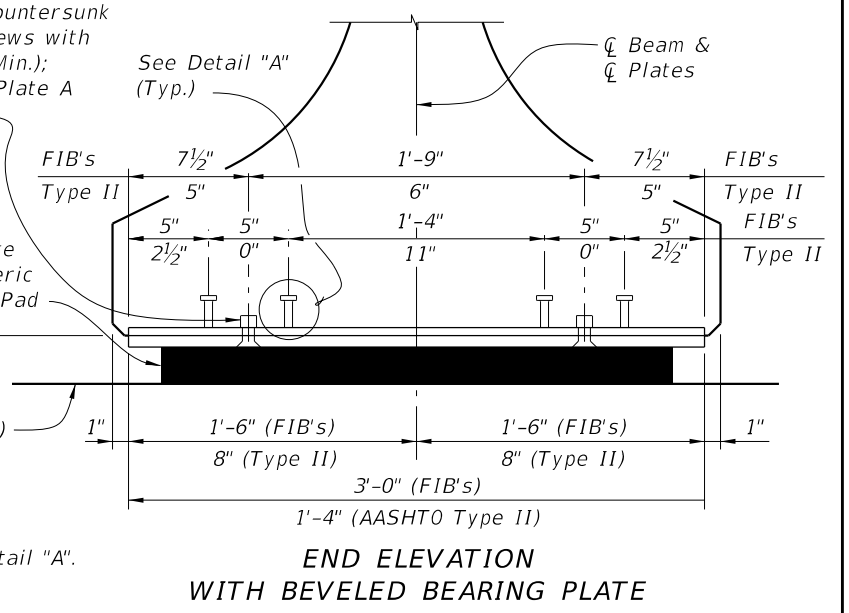
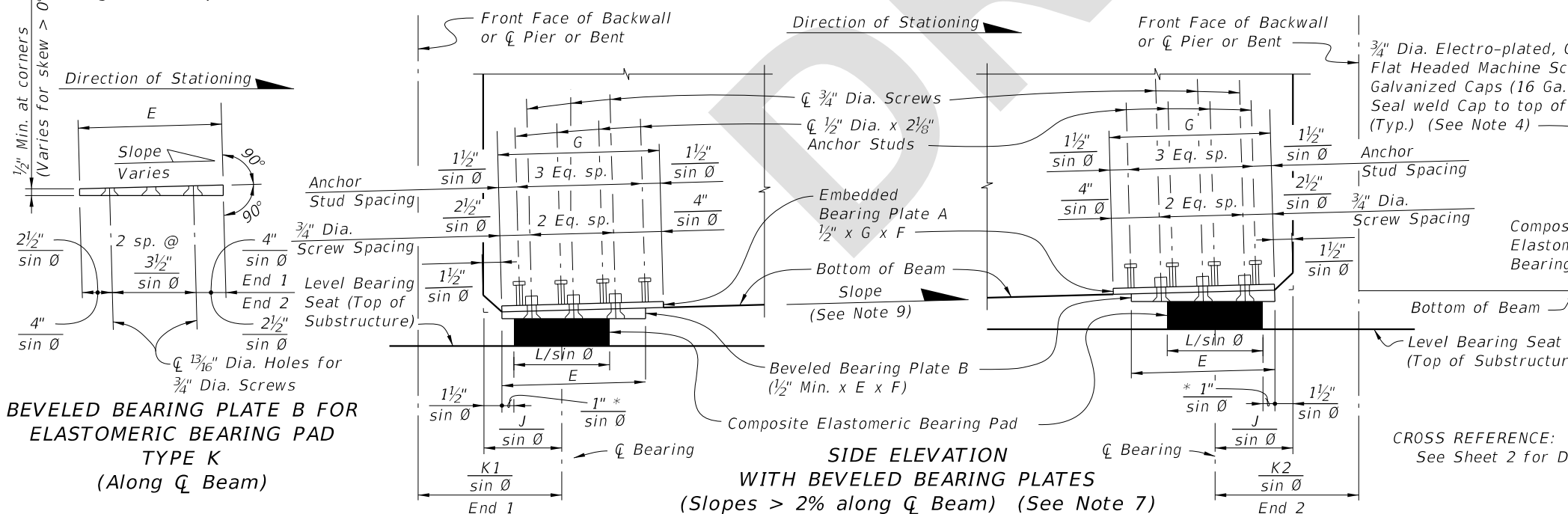
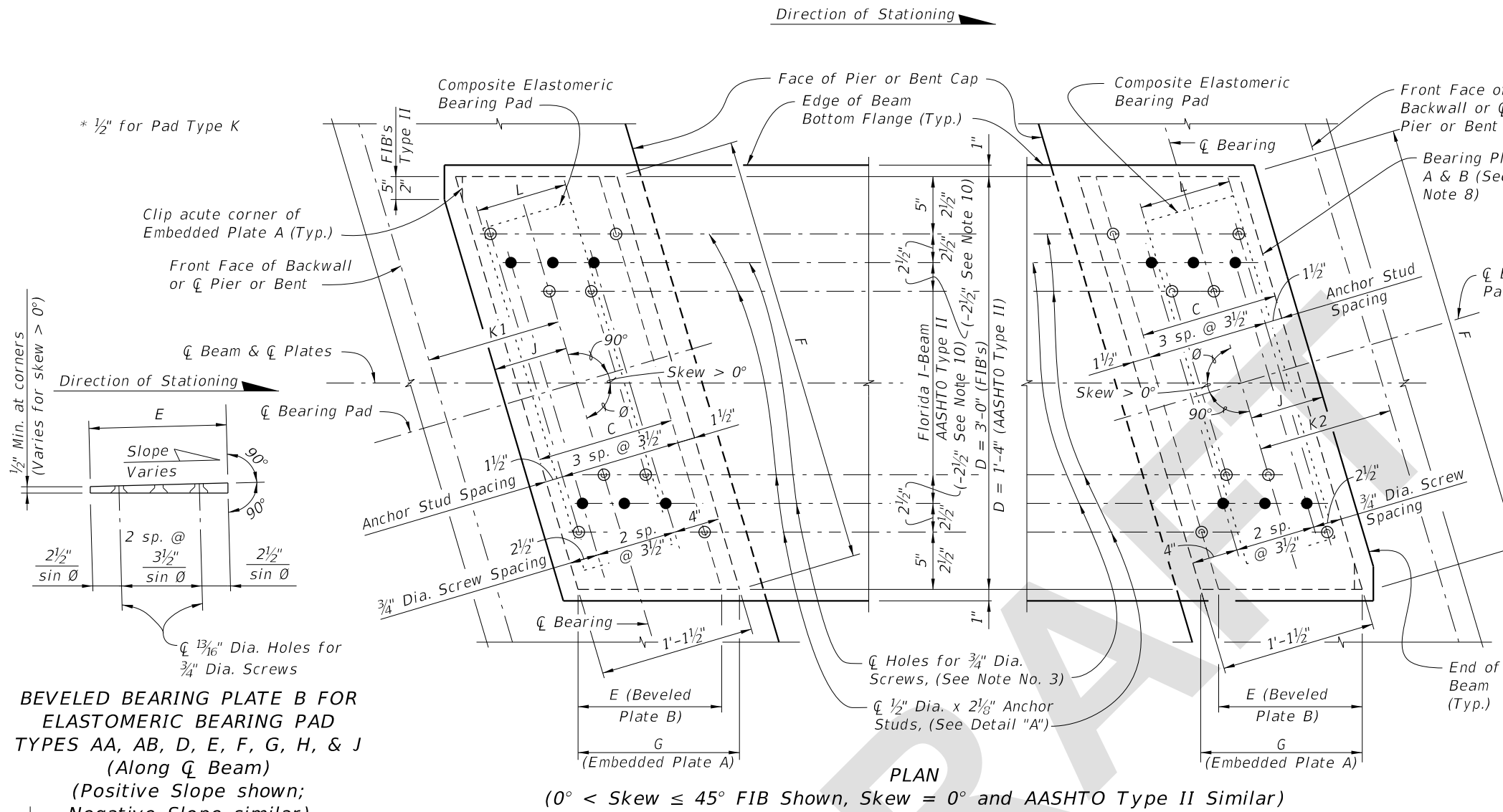
**RESPONSE:** Agreed. Will rename 550-011 to “Bridge Fencing on a Parapet (Curved Top)” and 550-013 “Bridge Fencing on a Barrier (Curved Top)” in order to distinguish them from the Vertical version. The term “pathway” was used as a more general term to encompass both sidewalks and shared use paths that may be used with this Standard. We did not want to limit to either a sidewalk or shared use path.

**CHANGE MADE TO INDEX:** Yes, fixed grammar in sentence.

*Response Date: 7/11/23*

NOTES:

1. Work this sheet with Index 400-510 - Composite Elastomeric Bearing Pads, and the 'BEARING PLATE DATA TABLE' in the Structures Plans.
2. Embedded Bearing Plates A are required for all Florida-I beams. Beveled Bearing Plates B with Embedded Bearing Plates A are required for beams as scheduled in the 'BEARING PLATE DATA TABLE' in the Structures Plans.
3. Bearing plate material shall conform to ASTM A36 or ASTM A709 (Grade 36 or 50). Headed Concrete Anchor Studs shall conform to Specification Section 502. Hot-dip galvanize Bearing Plates A & B after fabrication except that Galvanized Caps may be welded in place after hot-dip galvanizing. Drill Bearing Plates A and B as an assembled unit, thread Bearing Plate A only. Holes are not required in Plate A when Plate B is not required. Drill and thread holes perpendicular to Embedded Plate A and prior to plates being galvanized (ASTM A 123).
4. Provide Electroplated, Flat Head Cap Screws in accordance with ASTM F 835. Electroplating shall be ASTM B633, SC 2, Type 1. Provide screws long enough to maintain a  $\frac{3}{4}$ " minimum embedment into Embedded Bearing Plate A and Galvanized Cap. Provide steel Galvanized Caps with  $\frac{1}{2}$ " Min. to  $1\frac{1}{2}$ " Max. height and nominal 1" inside diameter.
5. Include the cost of Bearing Plates in the pay item for Prestressed Beams.
6. For Pad Type and Dimensions C, D, E, F and G, see the 'BEARING PLATE DATA TABLE' in the Structures Plans. For Dimensions J, K1 and K2, see 'TABLE OF BEAM VARIABLES' in the Structures Plans.
7. All details and dimensions shown are along  $\bar{C}$  Beam, except for dimensions to  $\frac{3}{4}$ " Dia. Screws and  $\frac{1}{2}$ " Dia. x  $2\frac{1}{8}$ " Anchor Studs, which are along  $\bar{C}$  Screws or  $\bar{C}$  Anchor Studs. Positive Slope shown, Negative Slope similar.
8. When Skew = 0°, F = D = 3'-0" (Florida-I Beams) or 1'-4" (AASHTO Type II Beams) E = C, and G = 1'-1 $\frac{1}{2}$ ".
9. Slope is determined along  $\bar{C}$  Beam at  $\bar{C}$  Bearing. See 'BEARING PLATE DATA TABLE' in the Structures Plans for Slope and Angle  $\theta$ .
10. For AASHTO Type II Beams negative dimensions indicate anchor studs are in a single line in the outside row.



LAST REVISION	DESCRIPTION:
11/01/23	

**FY 2024-25  
STANDARD PLANS**

**BEARING PLATES (TYPE 1) - PRESTRESSED  
FLORIDA-I AND AASHTO TYPE II BEAMS**

INDEX	SHEET
450-511	1 of 2