
Index 700-120 Enhanced Highway Signing Assemblies

ORIGINATION

Date: June 28, 2022

Name: Matthew DeWitt

Phone: (850) 921-7353

Email: Matthew.Dewitt@dot.state.fl.us

COMMENTARY

The solar power assembly and battery unit for the wrong way vehicle detection is larger and more powerful than the one that is used for a typical enhanced highway signing assembly. As a result, the solar panel must be ground mounted and a ground mounted uninterruptible power supply (UPS) cabinet must be provided. Both the solar panel and the UPS cabinet must be installed close to the right of way line, outside the clear zone.

COMMENTS AND RESPONSES

BLACK = Industry Review Comments **BLUE** = Standard Plans Response **GREEN** = Change Made to Index

Name: Anonymous

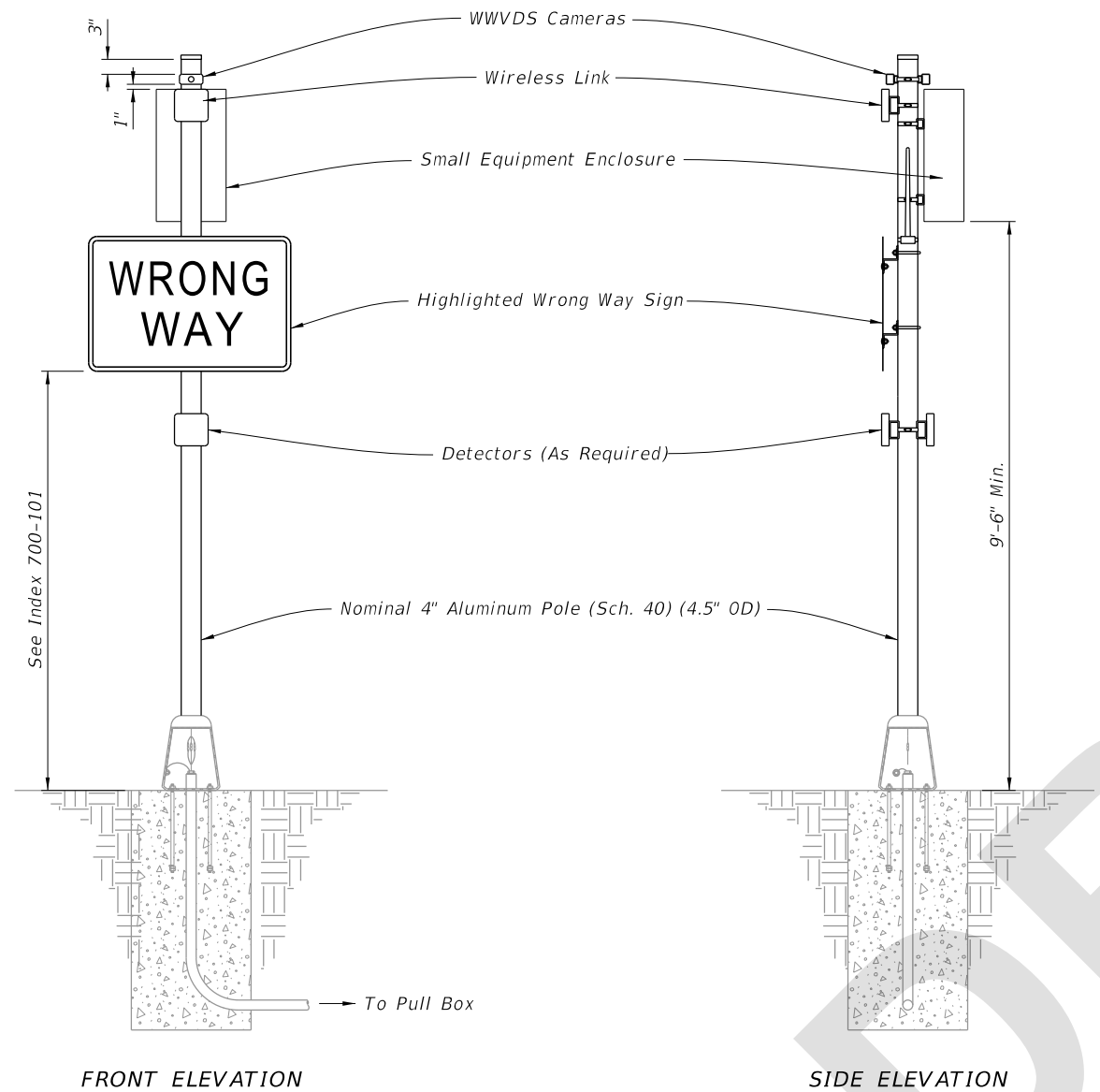
Date: 8/16/2022

COMMENT: The new Solar Panel Detail seems to indicate that Solar Panels are to be included in all installations. The detail also depicts an installation that conflicts with the products on the APL.

RESPONSE: Agree. Will revise note and detail to make it clear that the solar panel detail is for illustration purposes only and that manufacturer's instructions must be followed.

CHANGE MADE TO INDEX: Revise notes and Detail B.

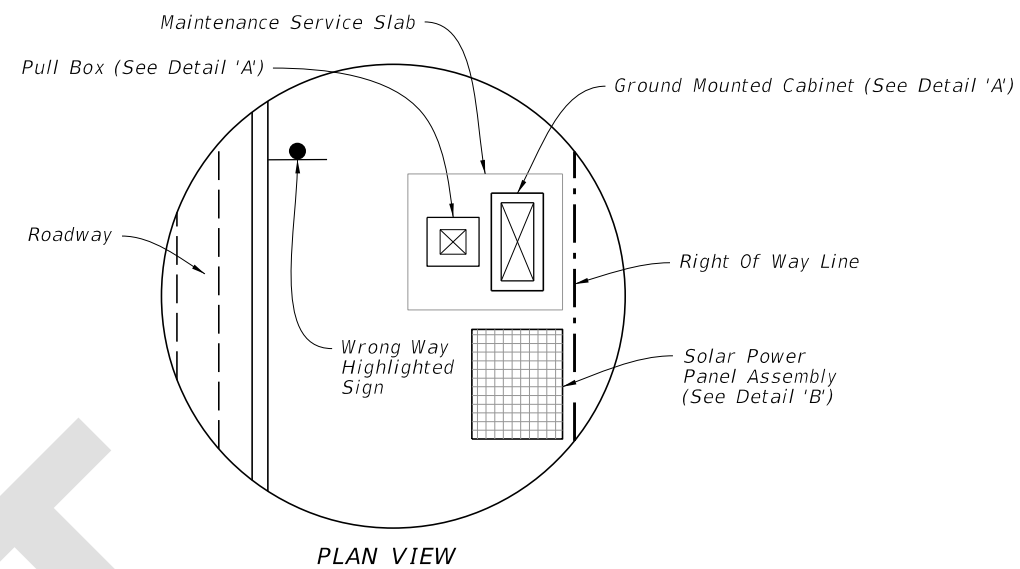
Response Date: August 16, 2022



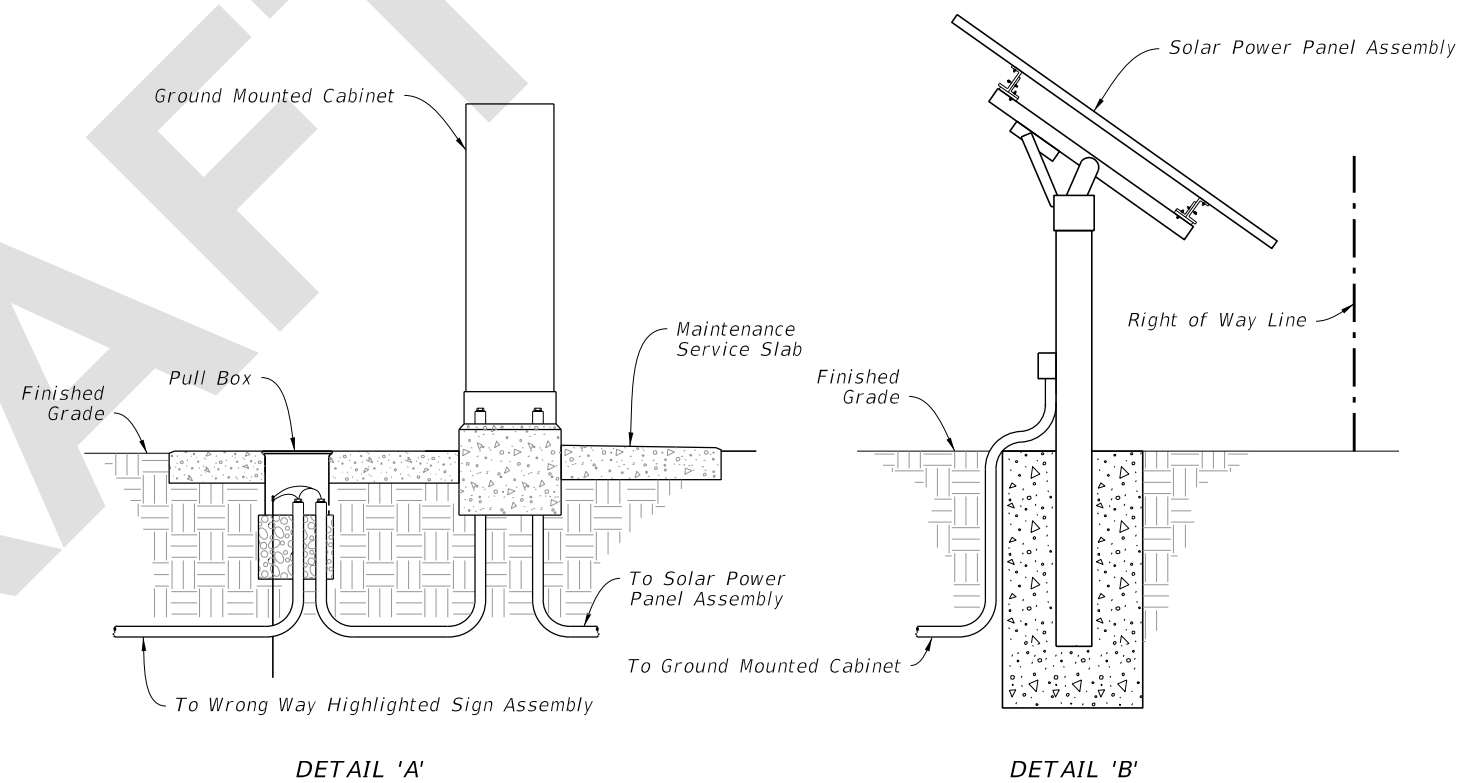
FRONT ELEVATION

SIDE ELEVATION

WRONG WAY HIGHLIGHTED SIGN ASSEMBLY



PLAN VIEW



DETAIL 'A'

DETAIL 'B'


SOLAR POWER ASSEMBLY

NOTES:

1. Install Wrong Way Vehicle Detection System (WWVDS) devices including cameras, detectors, wireless links, antennas, enclosures, and electronics in accordance with the manufacturer's instructions.
2. When a solar powered configuration (Type B7) is called for in the Plans, install a ground mounted cabinet and solar power panel assembly. Install the solar charge controller and batteries in the same ground mounted cabinet. Provide a separate pole for mounting the solar panel (DETAIL 'B' shown for illustration purposes only) and install in accordance with manufacturer's instructions. Locate the Solar Power Assembly as close to the right of way as possible. Orient the solar panel to face South.
3. Foundation reinforcement not shown.
4. Install cabinets in accordance with Index 676-010.

ROADSIDE SIGN ASSEMBLY-7

9/1/2022 7:33:30 AM

LAST REVISION 11/01/22	REVISION	DESCRIPTION:	 FY 2023-24 STANDARD PLANS	ENHANCED HIGHWAY SIGNING ASSEMBLIES	INDEX 700-120	SHEET 9 of 11
---------------------------	----------	--------------	---	--	-------------------------	-------------------------