
ORIGINATION FORM

Proposed Revisions to a Standard Plans Index

(Please provide all information — Incomplete forms will be returned)

Contact Information:

Date: May 12, 2022

Originator: Rick Jenkins

Phone: (850) 414-4355

Email: Rick.Jenkins@dot.state.fl.us

Standard Plans:

Index Number: 700-120

Sheet Number (s): 1 of 11

Index Title: Enhanced Highway Signing Assemblies

Summary of the changes:

New General Note 1 - "Meet the requirements of Specifications 646 and 700."; Deleted Notes 1, 2, and 4; renumbered General Notes.

Commentary / Background:

The 700 Index Series is being edited to remove material information and other information that is located in the Standard Specifications. Revisions are being made to Specification Sections 700, 962 and 965 in conjunction with these changes.

Other Affected Offices / Documents: (Provide name of person contacted)

- | Yes | No | |
|-------------------------------------|-------------------------------------|---|
| <input checked="" type="checkbox"/> | <input type="checkbox"/> | Other Standard Plans – |
| <input type="checkbox"/> | <input checked="" type="checkbox"/> | FDOT Design Manual – Dewayne Carver |
| <input checked="" type="checkbox"/> | <input type="checkbox"/> | Basis of Estimates Manual – Ryan Gray |
| <input checked="" type="checkbox"/> | <input type="checkbox"/> | Standard Specifications – Daniel Strickland |
| <input type="checkbox"/> | <input checked="" type="checkbox"/> | Approved Product List – Missy Hollis |
| <input type="checkbox"/> | <input checked="" type="checkbox"/> | Construction – Jason Russell |
| <input type="checkbox"/> | <input checked="" type="checkbox"/> | Maintenance – Deanna Hutchison |

Origination Package Includes: (Submit package to Rick Jenkins)

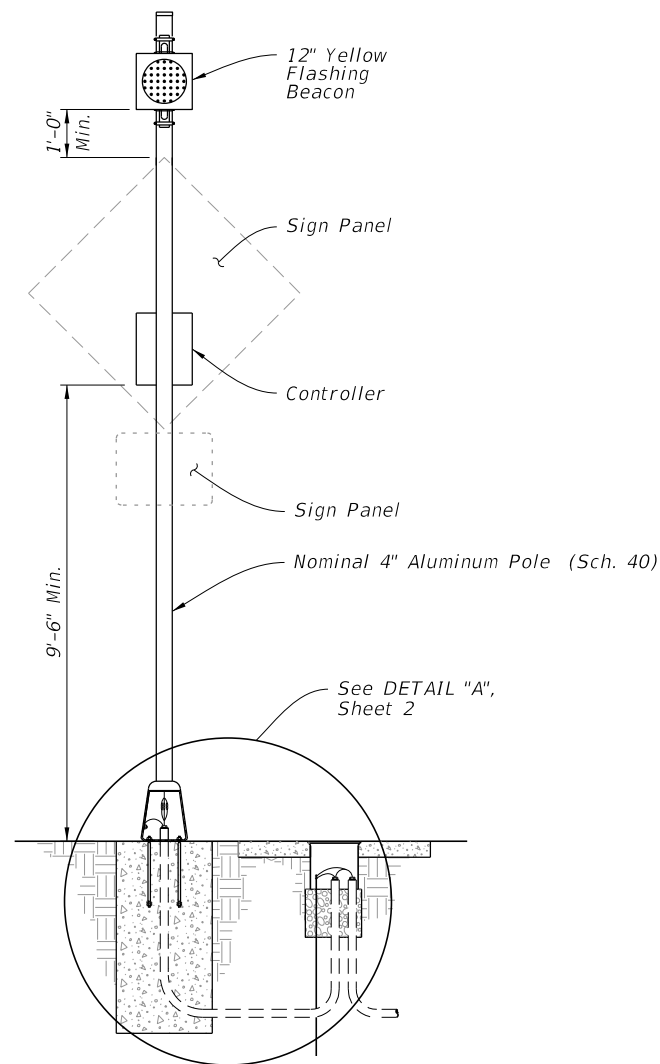
- | Yes | N/A | |
|-------------------------------------|--------------------------|---|
| <input checked="" type="checkbox"/> | <input type="checkbox"/> | Redline Mark-ups |
| <input type="checkbox"/> | <input type="checkbox"/> | Revised or Proposed Standard Plan Instruction (SPI) |
| <input type="checkbox"/> | <input type="checkbox"/> | Other Support Documents |

Implementation:

- | | |
|-------------------------------------|----------------------------------|
| <input type="checkbox"/> | Design Bulletin (Interim) |
| <input type="checkbox"/> | DCE Memo |
| <input type="checkbox"/> | Program Mgmt. Bulletin |
| <input checked="" type="checkbox"/> | FY-Standard Plans (Next Release) |

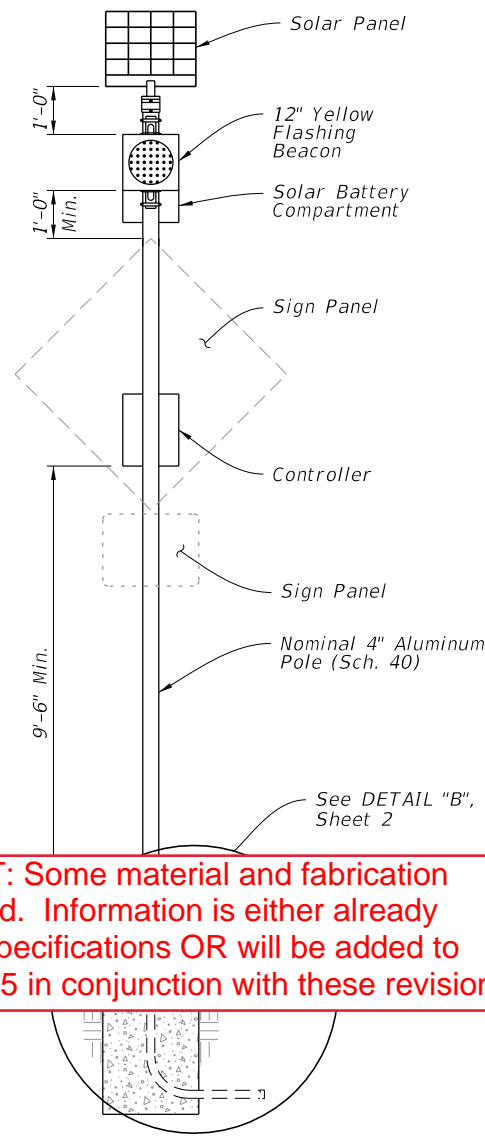
Contact the Roadway Design Office for assistance in completing this form

Email to: Rick Jenkins rick.jenkins@dot.state.fl.us and Darren Martin darren.martin@dot.state.fl.us



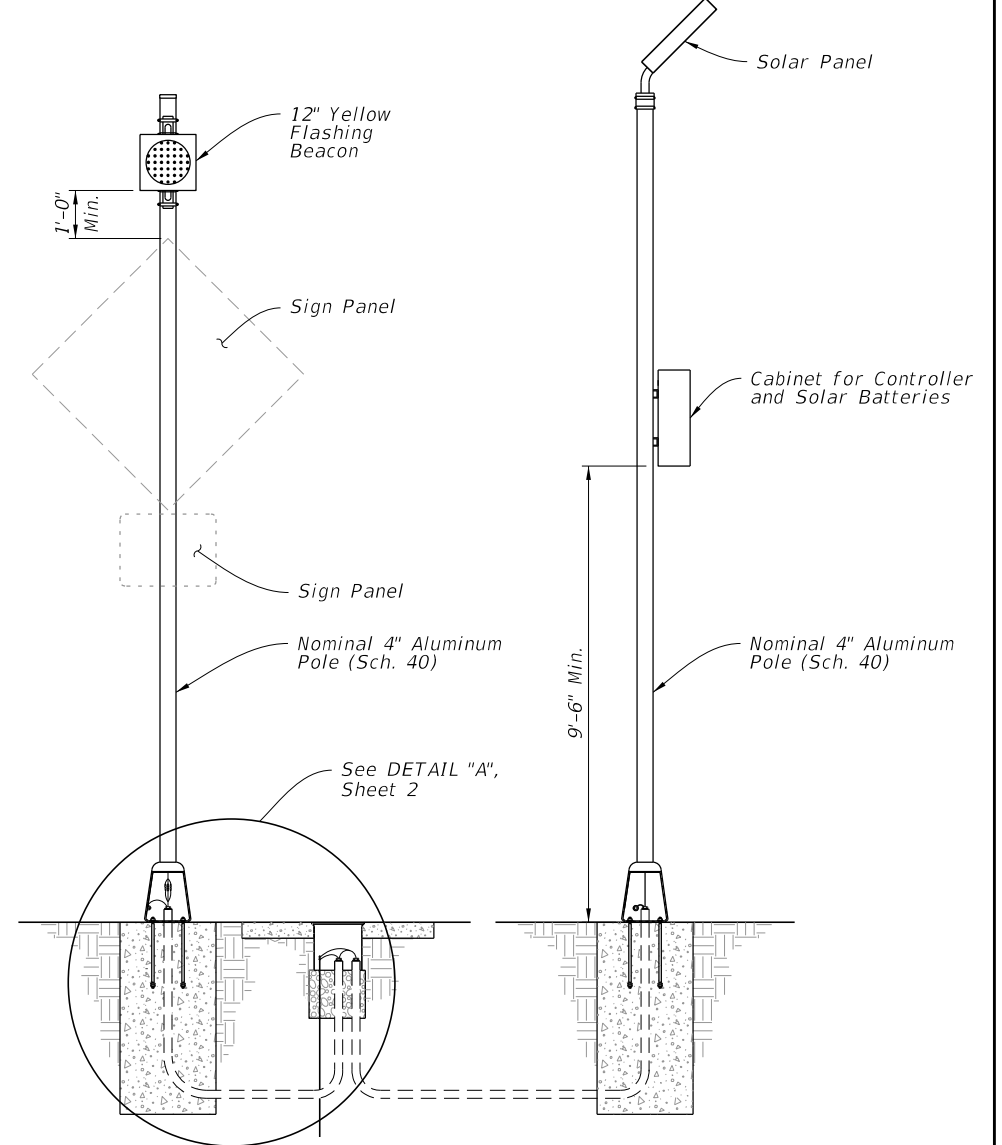
FRONT ELEVATION

POWER CONFIGURATION 'A'
CONVENTIONALLY-POWERED
 (Type A1)



FRONT ELEVATION

WITHOUT AUXILIARY POLE



SIGN ASSEMBLY
FRONT ELEVATION

AUXILIARY POLE
ELEVATION

WITH AUXILIARY POLE

POWER CONFIGURATION 'B'
SOLAR-POWERED
 (Type B1 Shown)

GENERAL COMMENT: Some material and fabrication information was deleted. Information is either already covered in Standard Specifications OR will be added to Section 700, 962 or 965 in conjunction with these revisions.

GENERAL NOTES:

- ~~1. Install sign assemblies based on Alpha-Numeric Type designation shown in the Plans (e.g., Type A1). Assembly Type is based on Power Configuration 'Alpha' identification shown above and Numerical Identification shown on Sheet 3 thru 8.~~
- ~~2. Install sign panel and wind beam in accordance with Index 700-010 and Specification 700.~~
- ~~3. Engage all threads on the transformer base and post unless the aluminum post is fully seated into base.~~
- ~~4. Meet the requirements of Specification 646.~~
- ~~5. Install a concrete slab around all roadside assemblies on slopes 6:1 or greater. The minimum slab dimension is 6" by 4'-0" by 5'-0".~~
- ~~6. When wire entry holes are drilled in the sign column, use a bushing or rubber grommet to protect conductors.~~

POWER CONFIGURATION 'B' NOTES:

- 1. Install a separate pole for mounting the solar panel, controller and batteries for all roadside assemblies with solar panels, controllers and batteries weighing more than 170 lbs.
- 2. Install the auxiliary pole as close to the right of way boundary as possible.
- 3. ~~so that the height is the same as the assembly.~~
- 4. Orient solar panel to face South for optimal exposure to sunlight.
- 5. The controller and the solar batteries may be located in the same compartment.

DELETED

TABLE OF CONTENTS:

Sheet	Description
1	General Notes and Contents
2	Conduit, Wiring, and Foundation Details
3	Roadside Sign Assembly-1
4	Roadside Sign Assembly-2
5	Roadside Sign Assembly-3
6	Roadside Sign Assembly-4
7	Roadside Sign Assembly-5
8	Roadside Sign Assembly-6
9	Roadside Sign Assembly-7
10	Roadside Sign Assembly-8
11	Overhead Sign Assembly

11/16/2021 7:35:01 AM

LAST REVISION 11/01/21	DESCRIPTION: 11/01/22
---------------------------	--------------------------

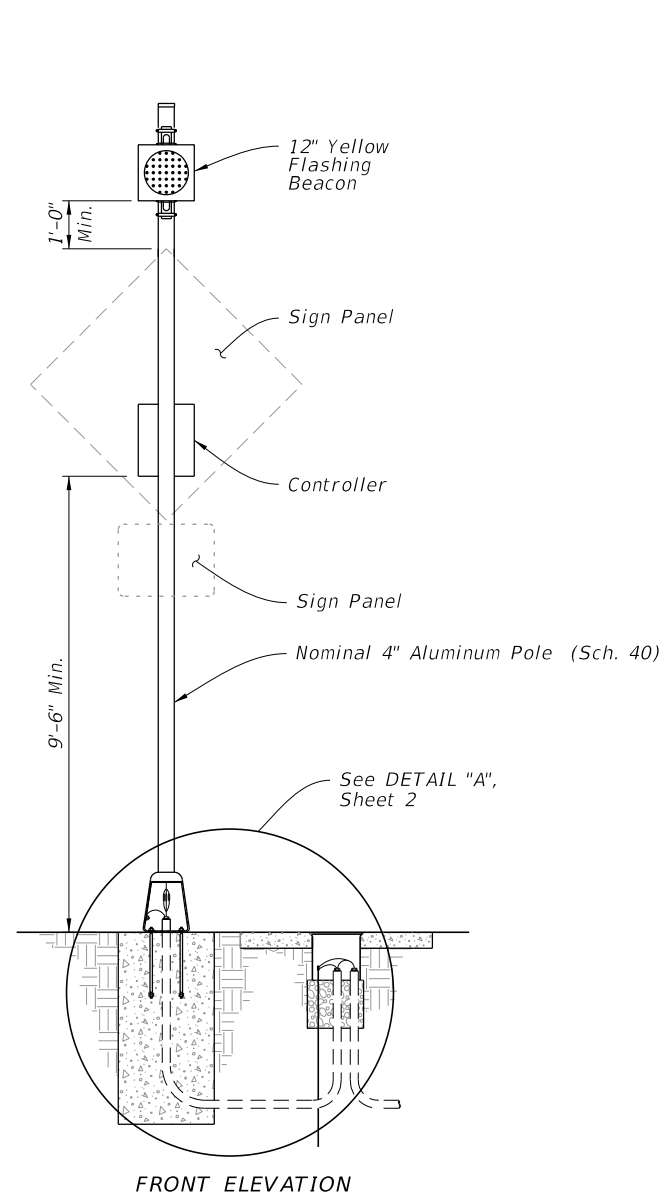


FY 2022-23
STANDARD PLANS

ENHANCED HIGHWAY SIGNING ASSEMBLIES

INDEX
700-120

SHEET
1 of 11

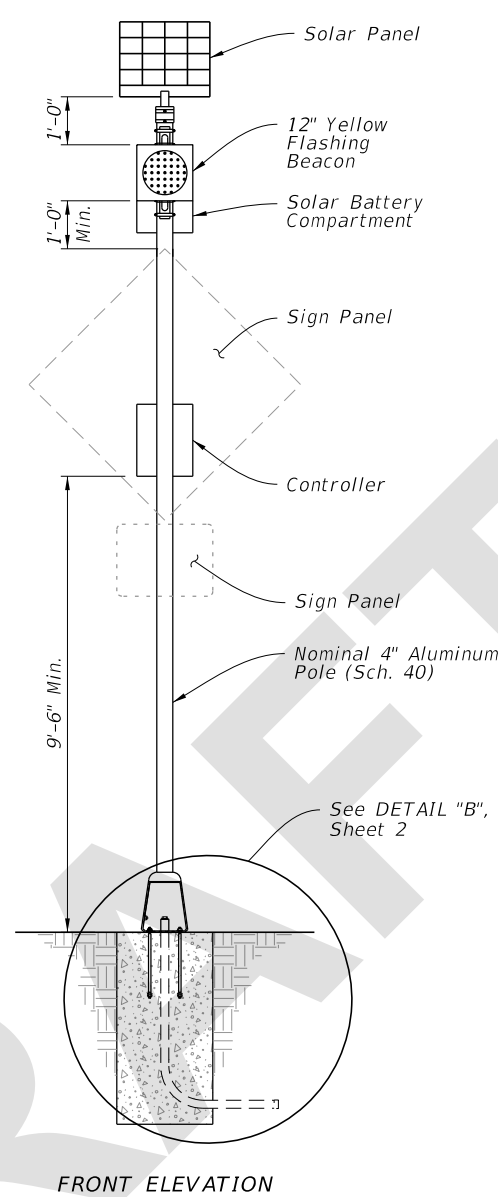


FRONT ELEVATION

POWER CONFIGURATION 'A'
CONVENTIONALLY-POWERED
 (Type A1 Shown)

GENERAL NOTES:

1. Meet the requirements of Specifications 646 and 700.
2. Engage all threads on the transformer base and post unless the aluminum post is fully seated into base.
3. Install a concrete slab around all roadside assemblies on slopes 6:1 or greater. The minimum slab dimension is 6" by 4'-0" by 5'-0".
4. When wire entry holes are drilled in the sign column, use a bushing or rubber grommet to protect conductors.



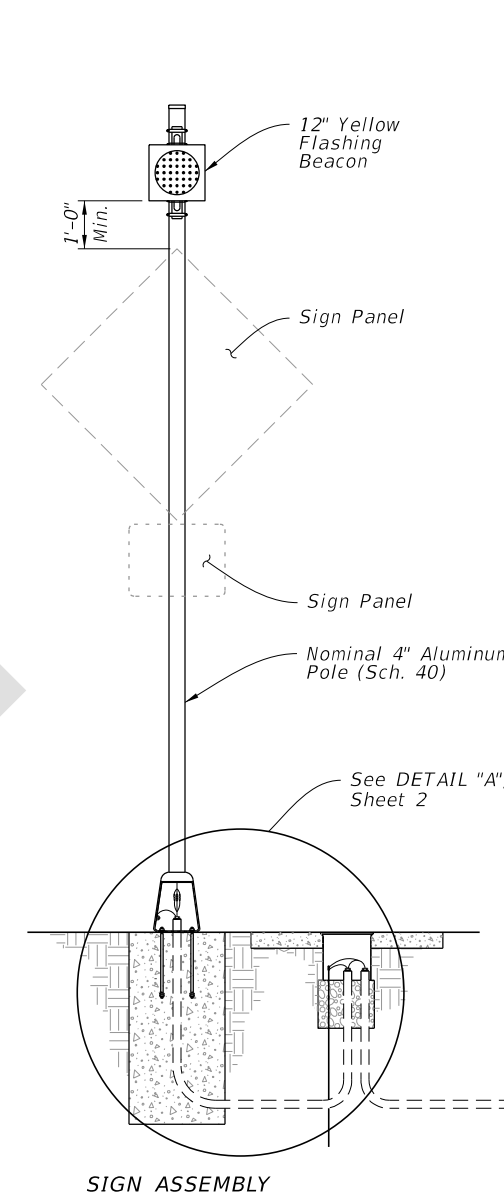
FRONT ELEVATION

WITHOUT AUXILIARY POLE

POWER CONFIGURATION 'B'
SOLAR-POWERED
 (Type B1 Shown)

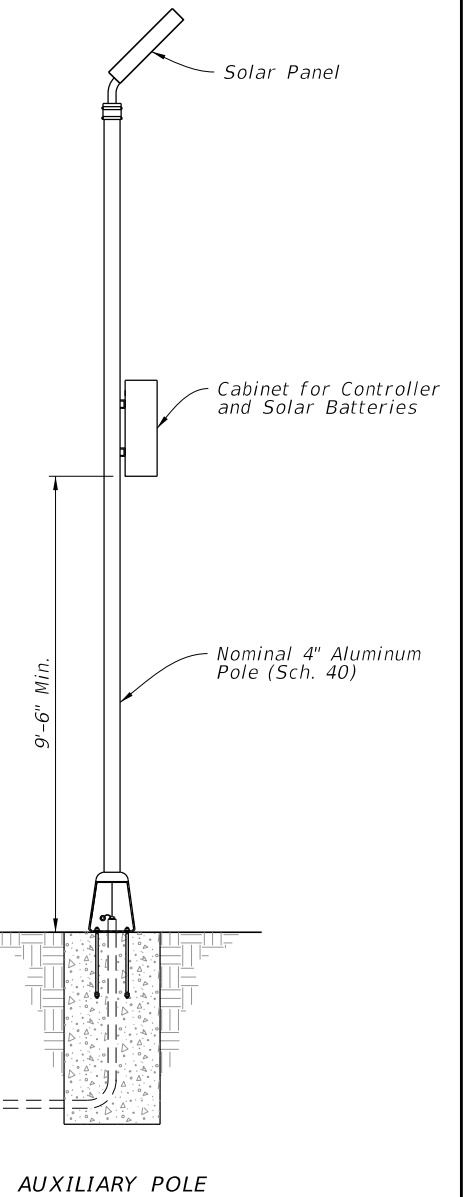
POWER CONFIGURATION 'B' NOTES:

1. Install a separate pole for mounting the solar panel, controller and batteries for all roadside assemblies with solar panels, controllers and batteries weighing more than 170 lbs.
2. Install the auxiliary pole as close to the right of way boundary as possible.
3. Install the auxiliary pole so that the height is the same as the column for the roadside assembly.
4. Orient solar panel to face South for optimal exposure to sunlight.
5. The controller and the solar batteries may be located in the same compartment.



SIGN ASSEMBLY
 FRONT ELEVATION

WITH AUXILIARY POLE



AUXILIARY POLE
 ELEVATION

TABLE OF CONTENTS:

Sheet	Description
1	General Notes and Contents
2	Conduit, Wiring, and Foundation Details
3	Roadside Sign Assembly-1
4	Roadside Sign Assembly-2
5	Roadside Sign Assembly-3
6	Roadside Sign Assembly-4
7	Roadside Sign Assembly-5
8	Roadside Sign Assembly-6
9	Roadside Sign Assembly-7
10	Roadside Sign Assembly-8
11	Overhead Sign Assembly

5/26/2022 9:56:04 AM

LAST REVISION	DESCRIPTION:
11/01/22	



FY 2023-24
 STANDARD PLANS

ENHANCED HIGHWAY SIGNING ASSEMBLIES

INDEX
 700-120

SHEET
 1 of 11