
Index 676-010 Cabinet Installation Details

ORIGINATION

Date: June 28, 2022

Name: Matthew DeWitt

Phone: (850) 921-7353

Email: Matthew.Dewitt@dot.state.fl.us

COMMENTARY

These proposed changes were developed based on implementing a maintenance service slab for ITS cabinets recommended during the TDH integration into statewide criteria. Language has also been added to Specification 676 for the maintenance service slab.

COMMENTS AND RESPONSES

BLACK = Industry Review Comments **BLUE** = Standard Plans Response **GREEN** = Change Made to Index

Name: Miguel Villegas

Date: 8/17/2022

COMMENT: On sheet 6 of 6, maybe the location of the proposed maintenance slab can be shown to be cast against the shaft as opposed to being cast against the conduits. Also, will the Department consider making the maintenance slab of a standard thickness or will it need to be designed by a structural engineer.

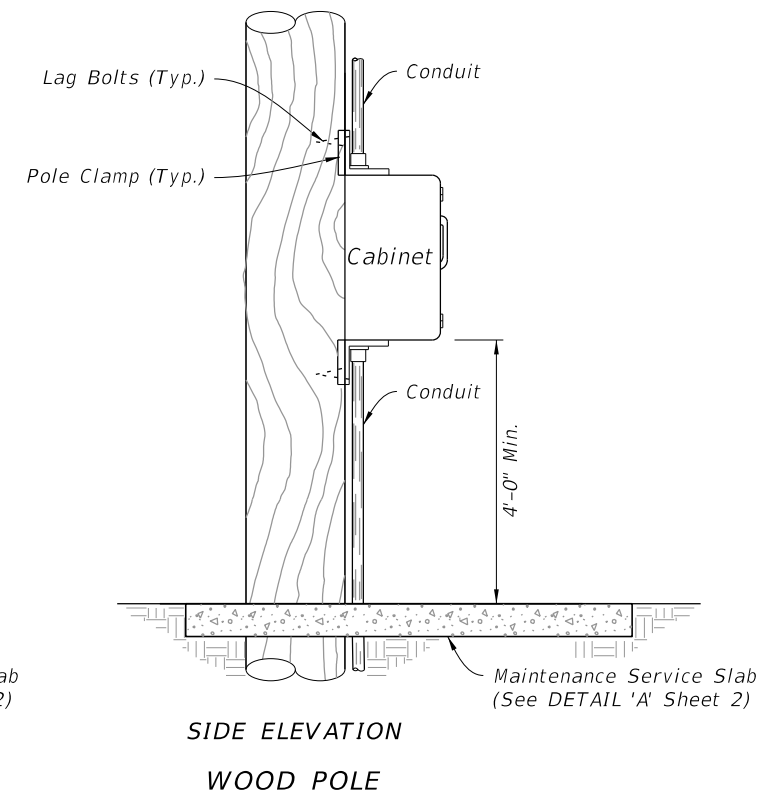
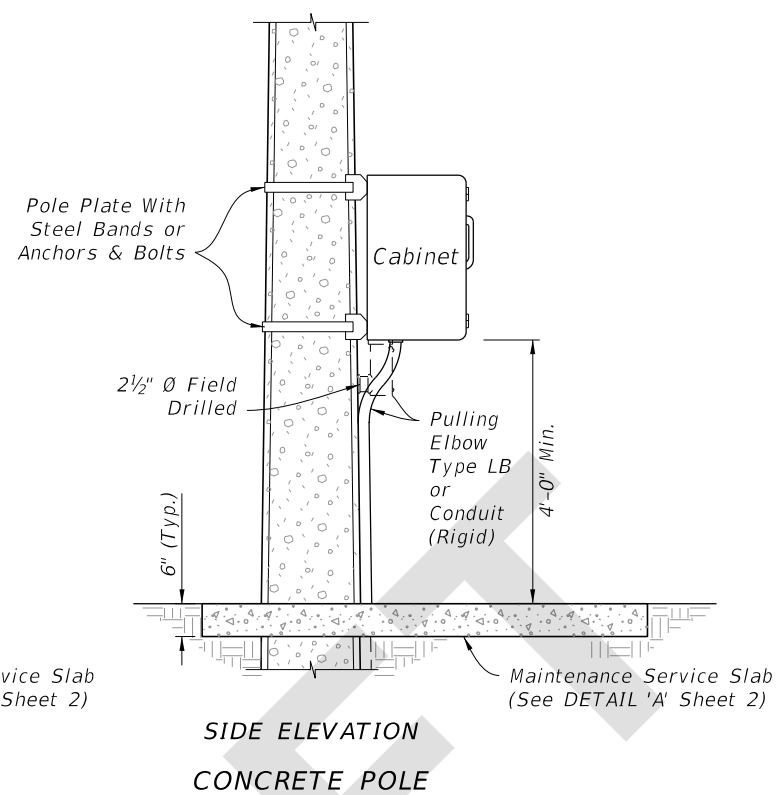
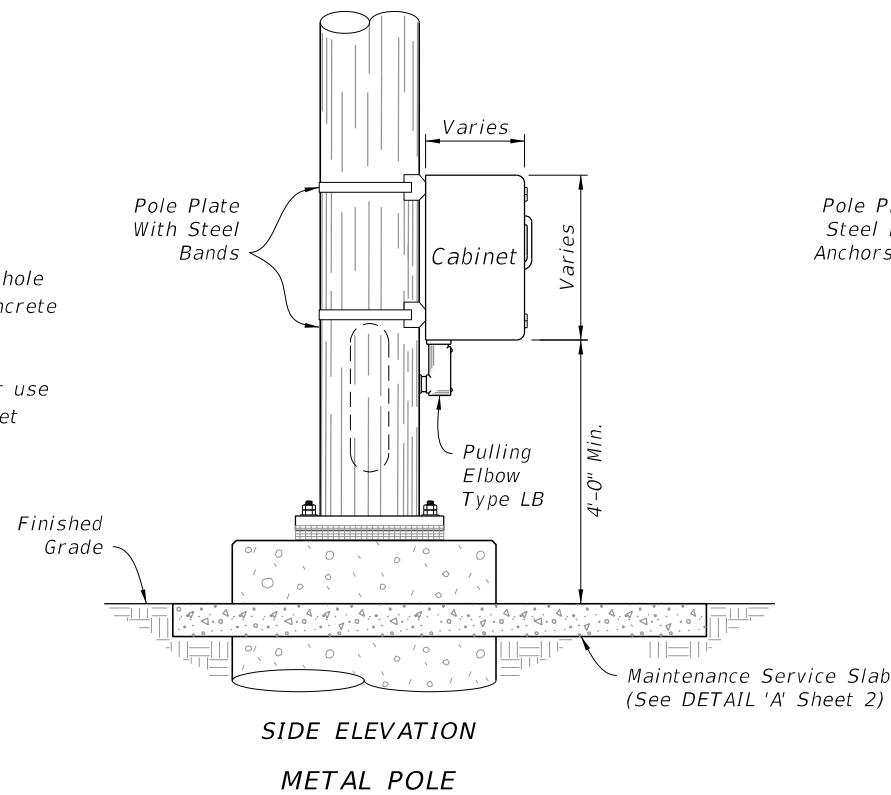
RESPONSE: Agree the slab should be shown to be cast against the shaft and the conduits should be adjusted. The maintenance slab is intended to be 6" thick. This is shown in Index 676-010 and Index 676-010 is referenced in this Index. We will revise 641-020, 649-020 and 676-010 to show the slab thicknesses accurately.

CHANGE TO THE INDEX: Edit slab adjacent to shaft and adjust conduit. Edit pull boxes throughout the index to show 6" aprons to match maintenance service slabs.

Response Date: 8/23/2022

NOTES:

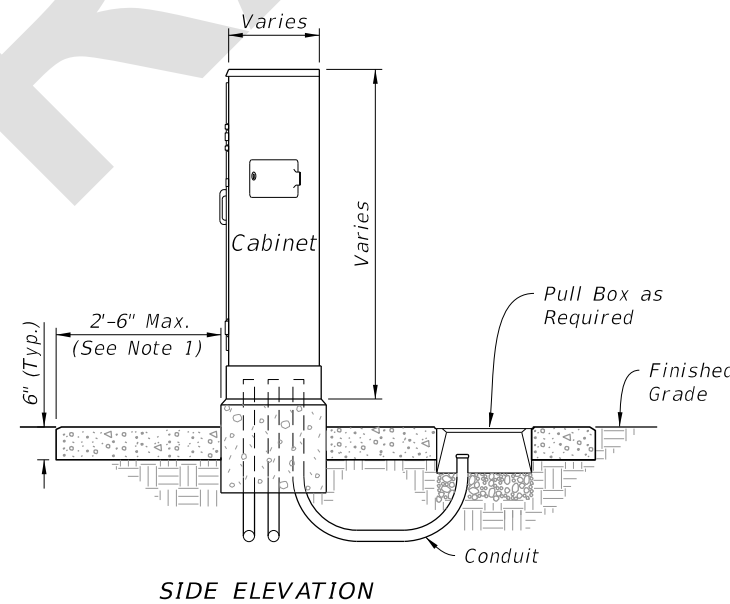
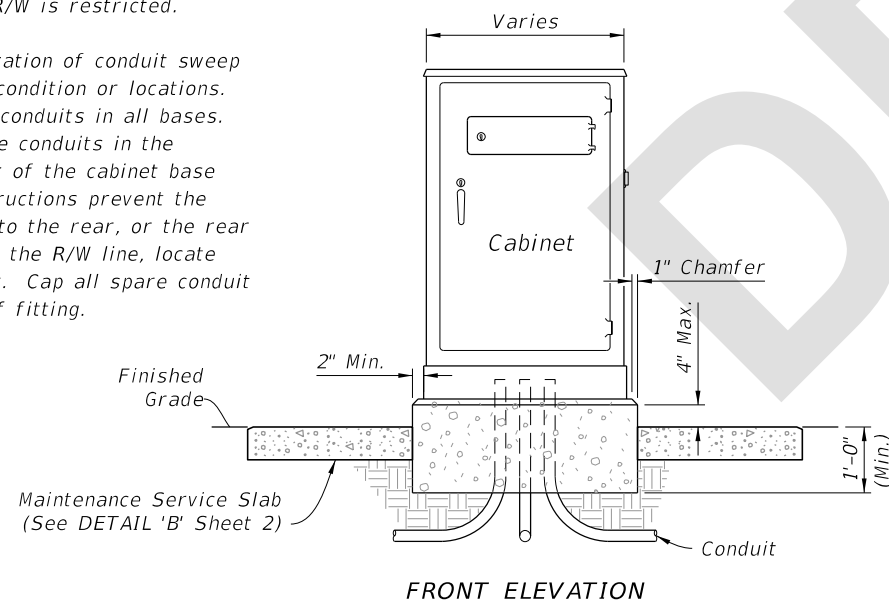
1. If cabinet mounting requires relocation of hole in concrete pole, fill existing hole with concrete or cover with a noncorrosive cover plate.
2. Liquidtight flexible conduit is approved for use from the electrical disconnect to the cabinet when both are installed on the same pole.



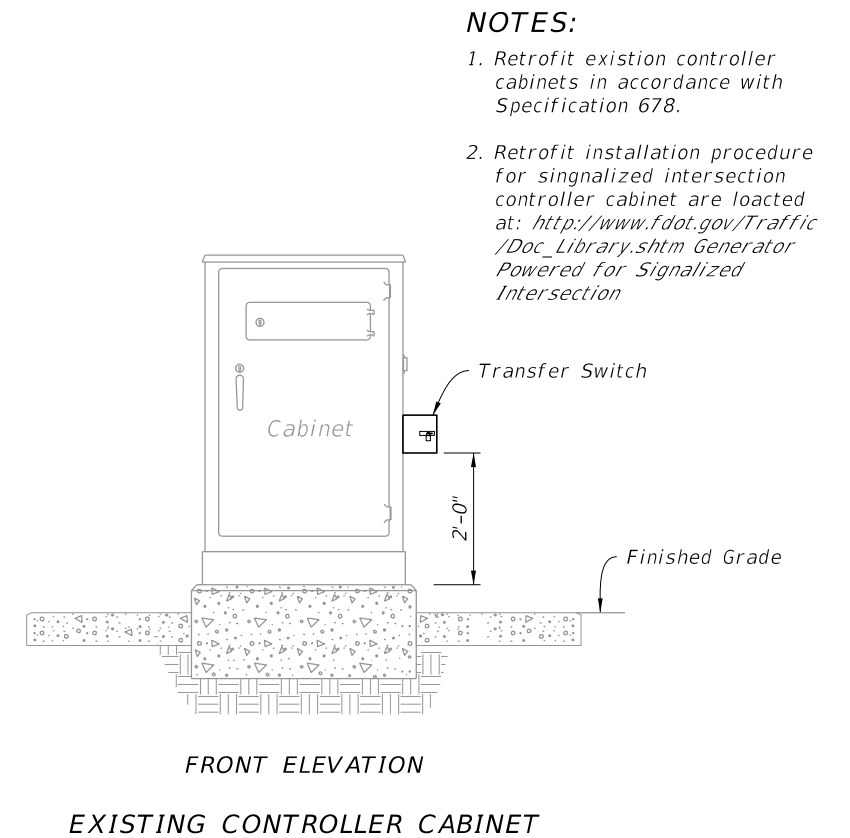
POLE MOUNTED CONTROLLER CABINET

NOTES:

1. Maintenance Service Slab: Use Class NS concrete and slope 1/4" to 1" for drainage. Not required in sidewalk, pavement areas, or where R/W is restricted.
2. The number, size and orientation of conduit sweep will vary according to site condition or locations. Provided two spare 2" PVC conduits in all bases. Place the exits of the spare conduits in the direction of the center rear of the cabinet base and into a pull box. If obstructions prevent the spare conduit from exiting to the rear, or the rear of the cabinet is located on the R/W line, locate as directed by the Engineer. Cap all spare conduit sweeps with a weatherproof fitting.



NEW CONTROLLER CABINET




EXISTING CONTROLLER CABINET

NOTES:

1. Retrofit existing controller cabinets in accordance with Specification 678.
2. Retrofit installation procedure for signalized intersection controller cabinet are located at: http://www.fdot.gov/Traffic/Doc_Library.shtm Generator Powered for Signalized Intersection

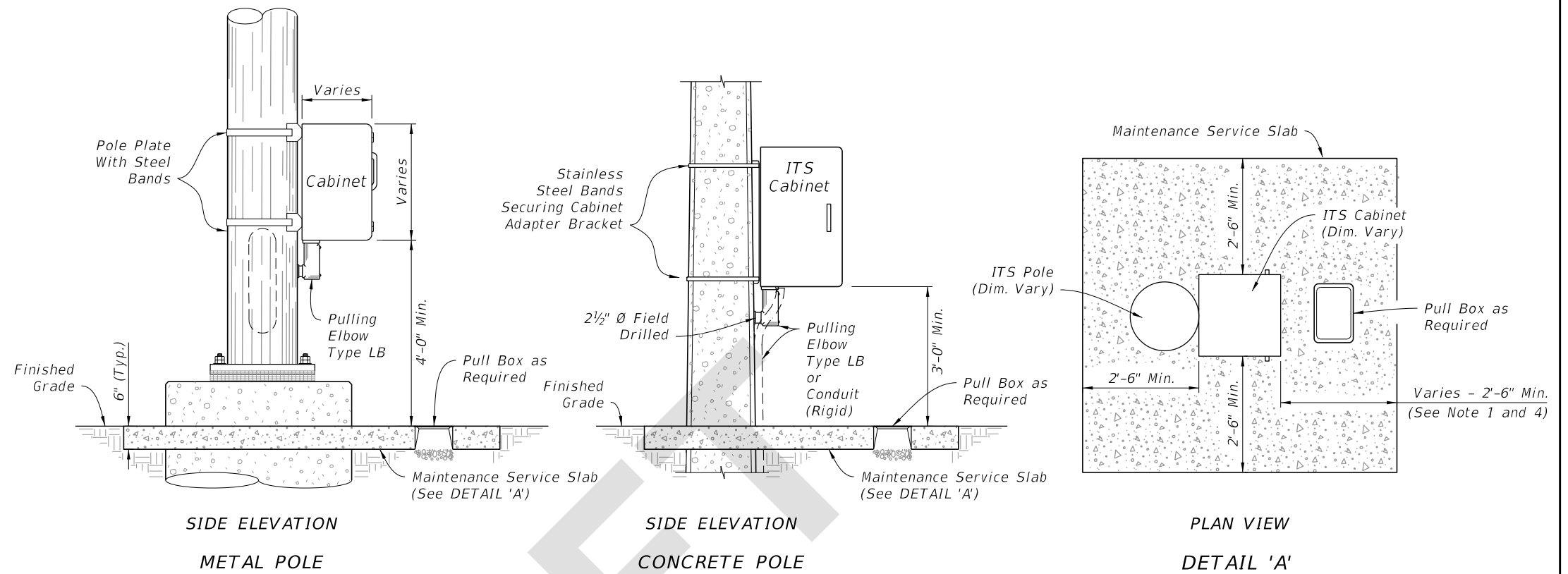
GROUND MOUNTED CONTROLLER CABINET

9/1/2022 11:36:11 AM

LAST REVISION 11/01/22	DESCRIPTION:	 FY 2023-24 STANDARD PLANS	CABINET INSTALLATION DETAILS	INDEX 676-010	SHEET 1 of 3
---------------------------	--------------	---	-------------------------------------	-------------------------	------------------------

NOTES:

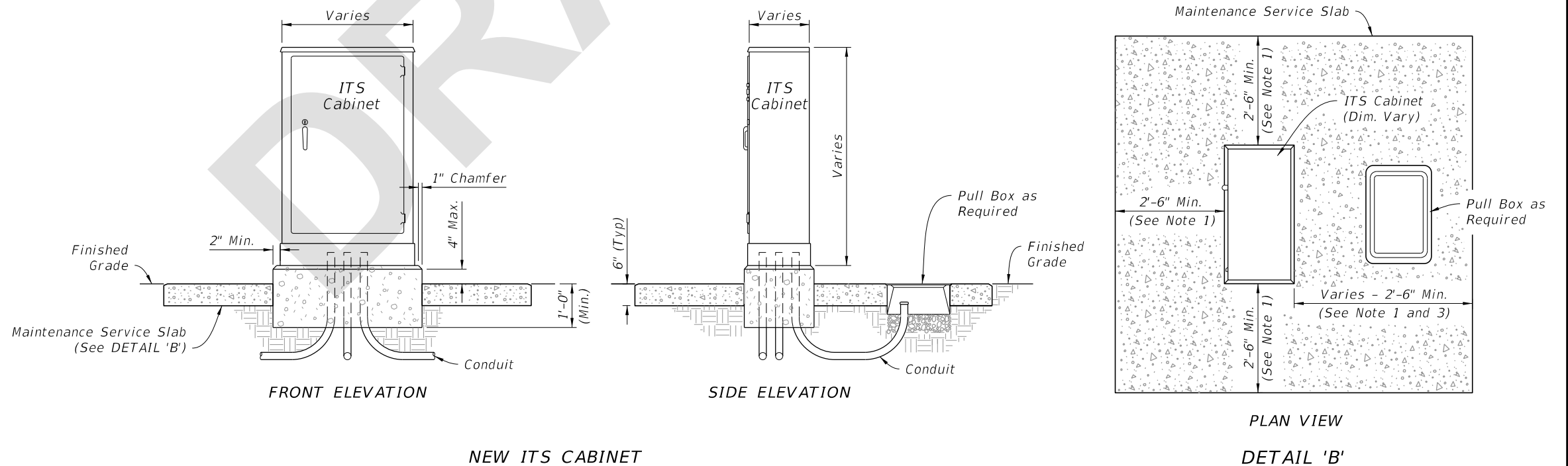
1. Maintenance Service Slab: Use Class NS concrete and slope 1/4" to 1" for drainage. Not required in sidewalk, pavement areas, or where R/W is restricted.
2. If cabinet mounting requires relocation of hole in concrete pole, fill existing hole with concrete or cover with a noncorrosive cover plate.
3. Liquidtight flexible conduit is approved for use from the electrical disconnect to the cabinet when both are installed on the same pole.
4. Where a pull box is to be placed within the maintenance service slab, the slab width must be extended to provide for the required pull box concrete apron as detailed in Index 635-001.
5. Coordinate placement of maintenance service slab with proposed final grade. Grade and compact side slopes around the maintenance service slab to provide a stable and level working area and tie into the proposed embankment.



POLE MOUNTED INTELLIGENT TRANSPORTATION SYSTEMS (ITS) CABINET


NOTES:

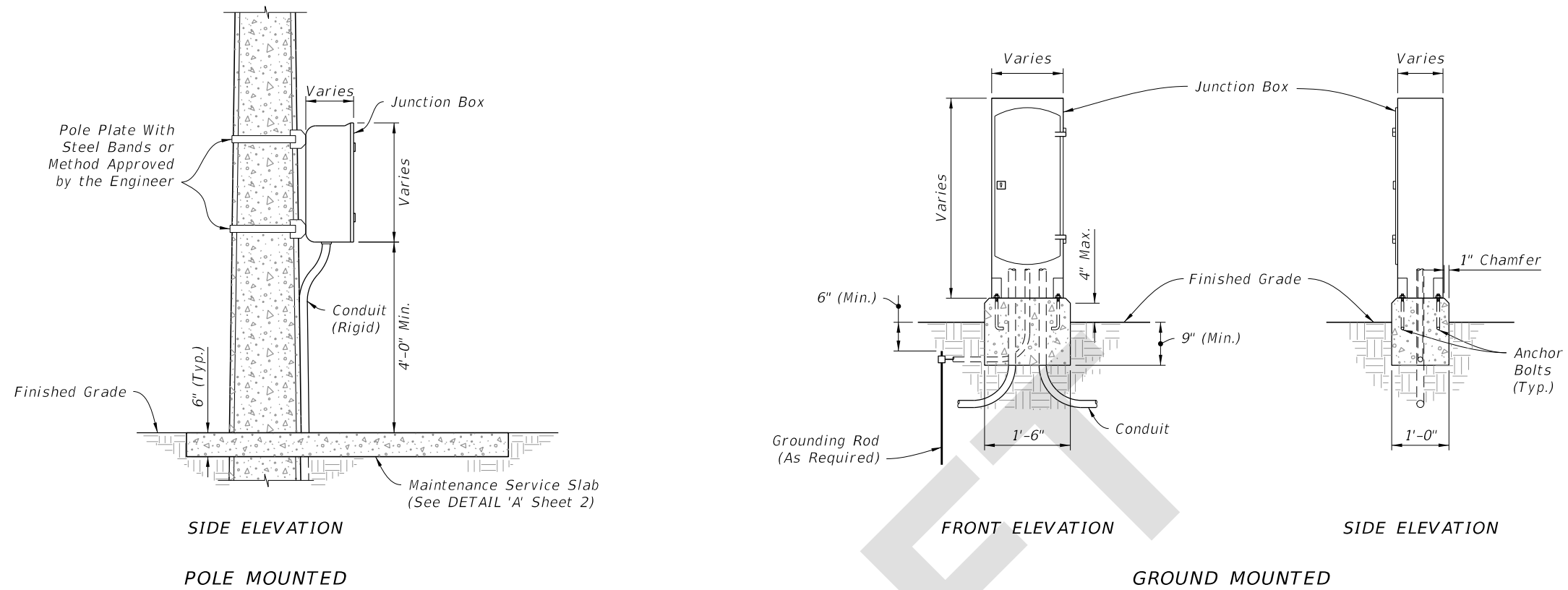
1. Maintenance Service Slab: Use Class NS concrete and slope 1/4" to 1" for drainage. Not required in sidewalk, pavement areas, or where R/W is restricted.
2. The number, size and orientation of conduit sweep will vary according to site condition or locations. Provided two spare 2" PVC conduits in all bases. Place the exits of the spare conduits in the direction of the center rear of the cabinet base and into a pull box. If obstructions prevent the spare conduit from exiting to the rear, or the rear of the cabinet is located on the R/W line, locate as directed by the Engineer. Cap all spare conduit sweeps with a weatherproof fitting.
3. When a pull box is to be placed within the maintenance service slab, the slab width must be extended to provide for the required pull box apron as detailed in Index 635-001.
4. Coordinate placement of maintenance service slab with proposed final grade. Grade and compact side slopes around the maintenance service slab to provide a stable and level working area and tie into the proposed embankment.



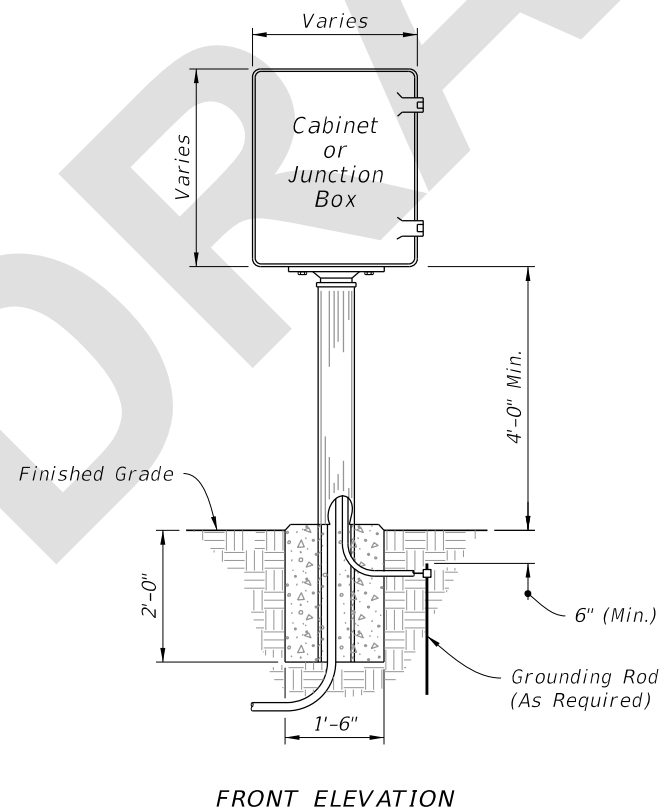
GROUND MOUNTED INTELLIGENT TRANSPORTATION SYSTEMS (ITS) CABINET

9/11/2022 11:36:12 AM

LAST REVISION 11/01/22	REVISION	DESCRIPTION:		FY 2023-24 STANDARD PLANS	CABINET INSTALLATION DETAILS	INDEX 676-010	SHEET 2 of 3
---------------------------	----------	--------------	---	------------------------------	------------------------------	------------------	-----------------




INTERCONNECT JUNCTION BOX



PEDESTAL MOUNTED CABINET

9/11/2022 11:36:13 AM

LAST REVISION 11/01/22	DESCRIPTION:	 FY 2023-24 STANDARD PLANS	CABINET INSTALLATION DETAILS	INDEX 676-010	SHEET 3 of 3
---------------------------	--------------	--	------------------------------	------------------	-----------------