
Index 715-002 Standard Aluminum Lighting

ORIGINATION

Date: 8-1-2021

Name: Richard Stepp

Phone: 850 414 4313

Email: Richard.stepp@dot.state.fl.us

COMMENTARY

Sheets 1, 4, & 7: Changed general concrete requirement from Class I to Class II.

Specification 346 is being revised to better reflect concrete type availability in the industry, so these changes from concrete class I to class II accommodate that.

COMMENTS AND RESPONSES

BLACK = Internal Review Comments **RED** = Standard Plans Response **GREEN** = Change Made to Index

Name: Anonymous Lighting Engineer - District 6

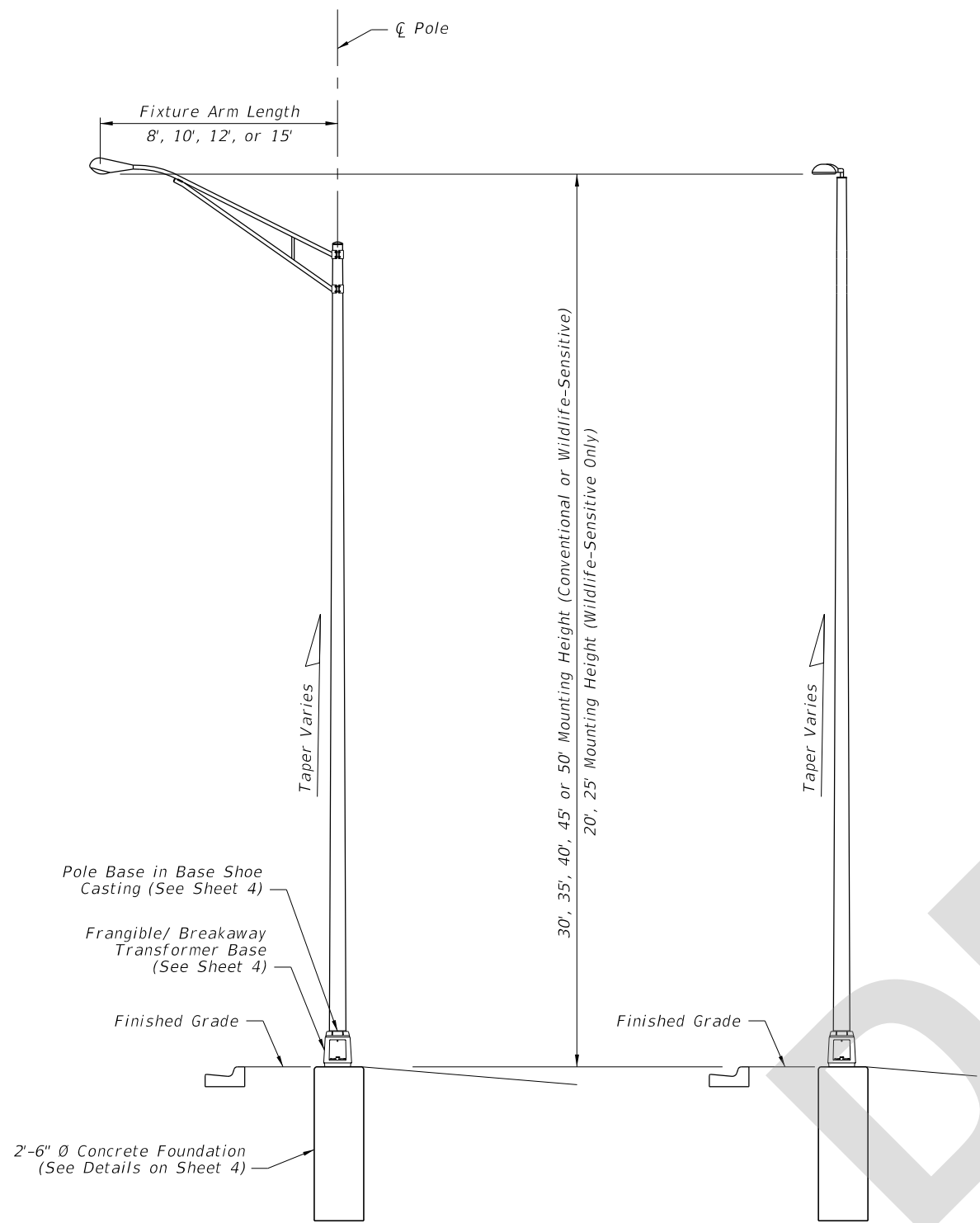
Date: 8-24-2021

COMMENT: Sheet 2: Wildlife-sensitive mounting heights. The FWC and lighting designers believe FDOT requires wildlife-sensitive lights can only be placed at 20 or 25 feet. This causes difficulty with lighting design and meeting requirements for uniformity ratios. Please clarify if wildlife-sensitive lights can be mounted at standard heights too (30 feet and higher).

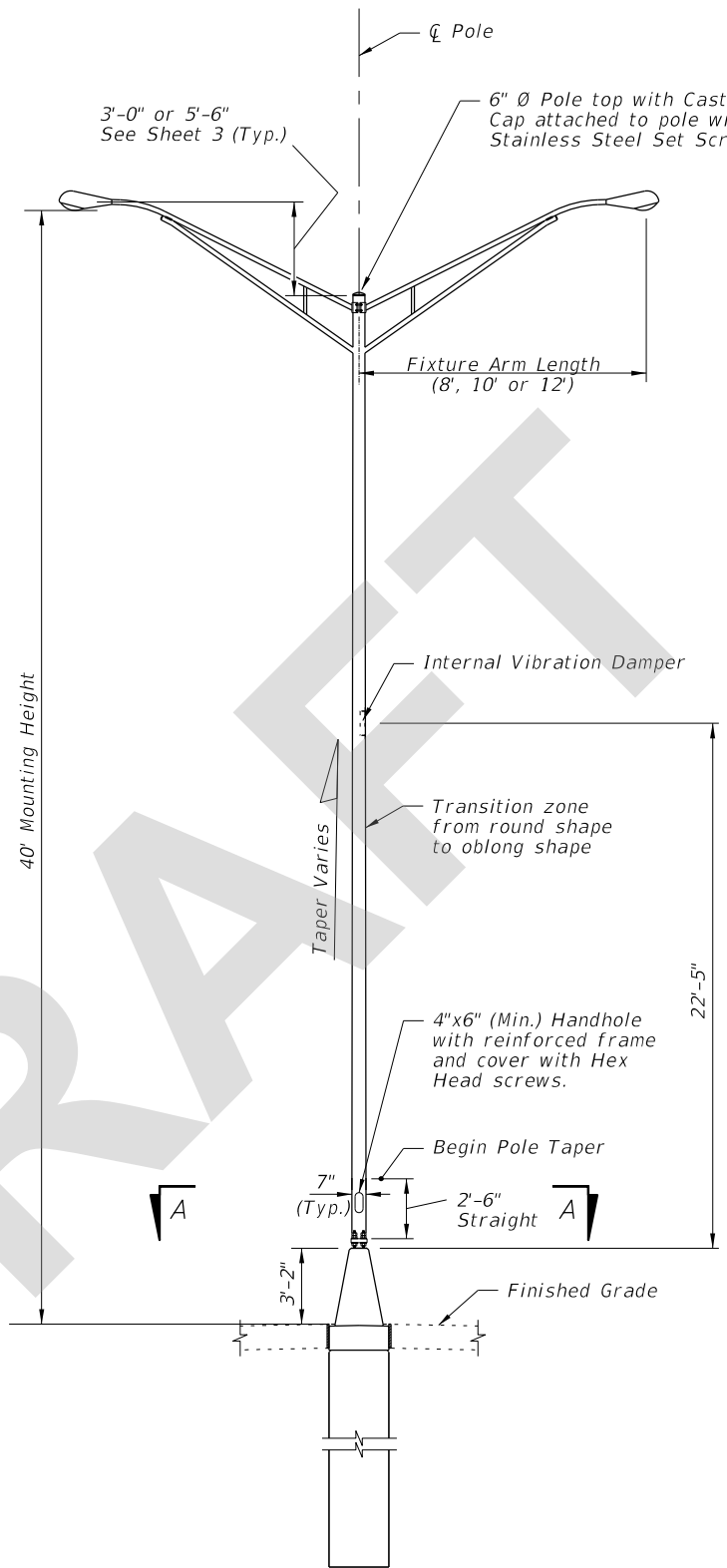
RESPONSE: This is beyond scope of original revision, but clarification is a small change and can be made.

Change made to Index: Sheet 2: Added clarification to callout. Wildlife-Sensitive lighting may also be used with standard mounting heights 30 feet through 50 feet (original intent).

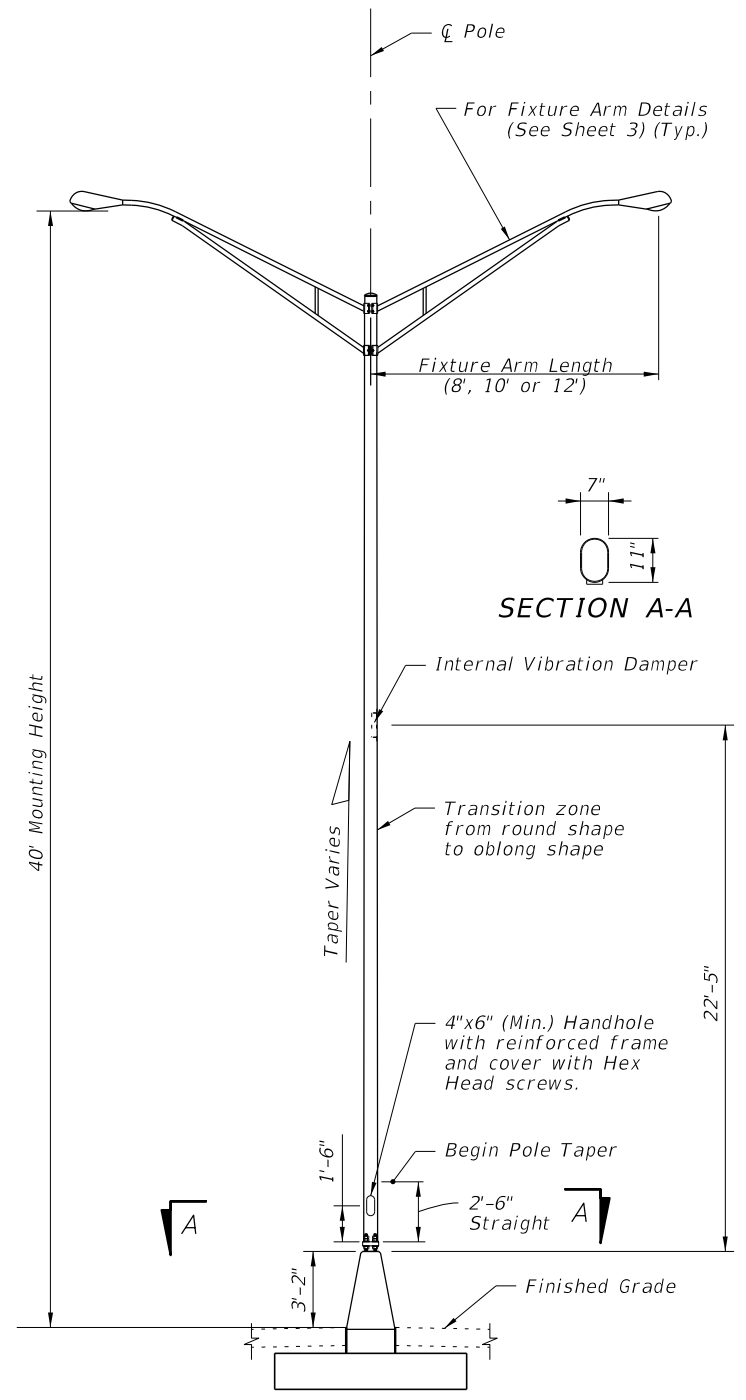
Date: 8-25-2021



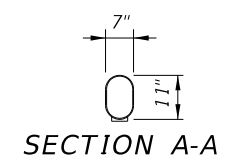
STANDARD ROADWAY ALUMINUM LIGHT POLE W/ARM



MEDIAN BARRIER MOUNTED ALUMINUM LIGHT POLE ON CYLINDRICAL FOUNDATION



MEDIAN BARRIER MOUNTED ALUMINUM LIGHT POLE ON SPREAD FOOTING FOUNDATION



ELEVATIONS

8/25/2021 9:37:01 AM

LAST REVISION 11/01/21	DESCRIPTION:
---------------------------	--------------


FY 2022-23
STANDARD PLANS

STANDARD ALUMINUM LIGHTING

INDEX 715-002	SHEET 2 of 8
------------------	-----------------