
Index 646-001

Aluminum Post and Pedestal Mounted Pedestrian Detectors and Signals

ORIGINATION

Date: 6-6-21

Name: Derwood Sheppard

Phone: 850 414-4334

Email: Derwood.Sheppard@dot.state.fl.us

COMMENTARY

The foundations within Indexes 646-001, 654-001, 695-001, and 700-120 are being updated to be more consistent between applications. A structural analysis was completed to determine if the foundations could be revised to provide a more consistent design between the various applications. The aluminum posts callouts will be changed to be consistent with other Indexes.

COMMENTS AND RESPONSES

BLACK = Industry Review Comments **RED** = Standard Plans Response **GREEN** = Change Made to Index

Name: C-Team Comment

Date: 9/8/2021

COMMENT: Has the revision of pole diameter callouts from 4" nominal to 4.5" OD been properly coordinated? This change could incur cost updates and other design considerations and affect APL. Were structural parameters considered? Specification 646 references 4" nominal which needs to be updated.

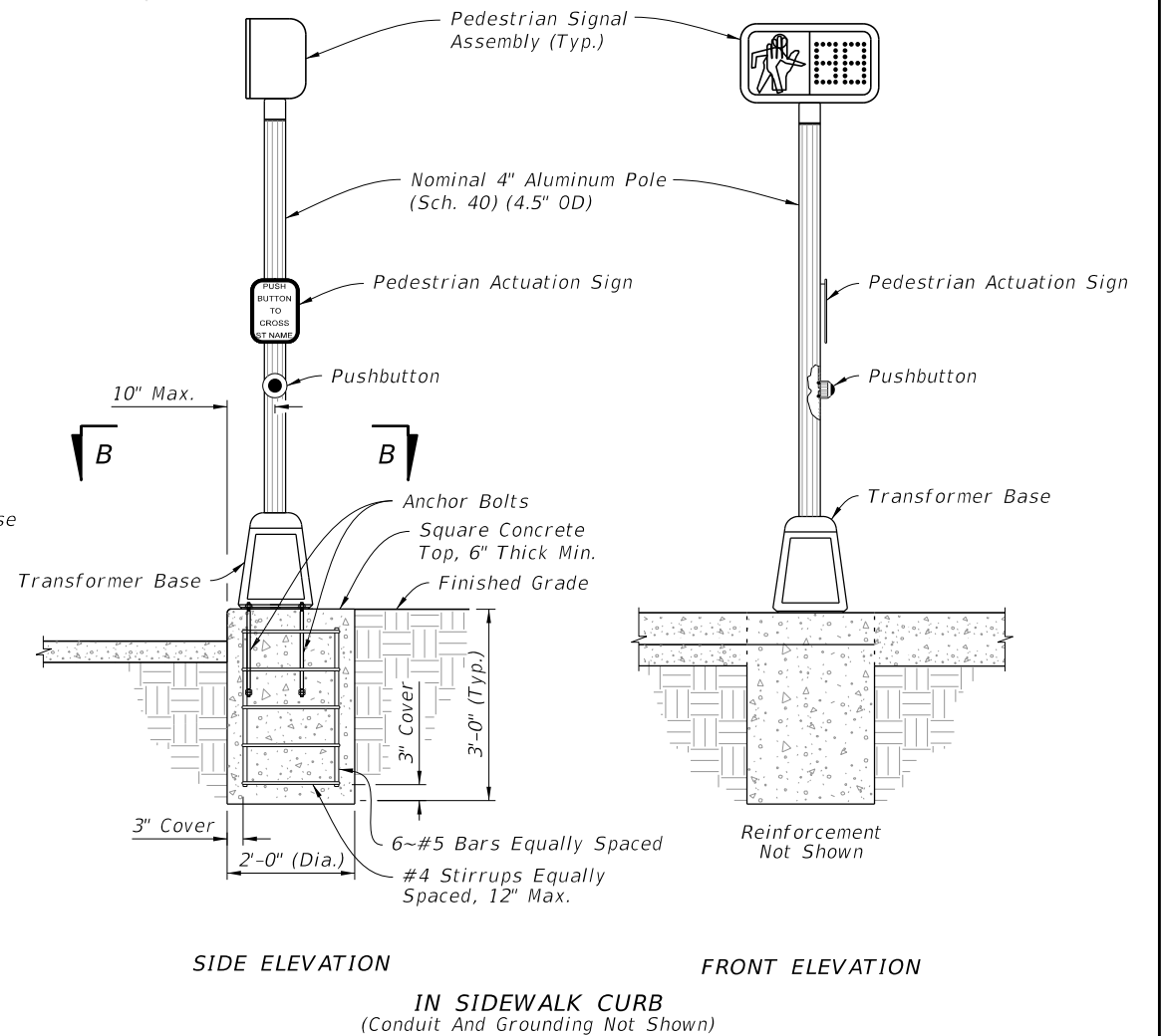
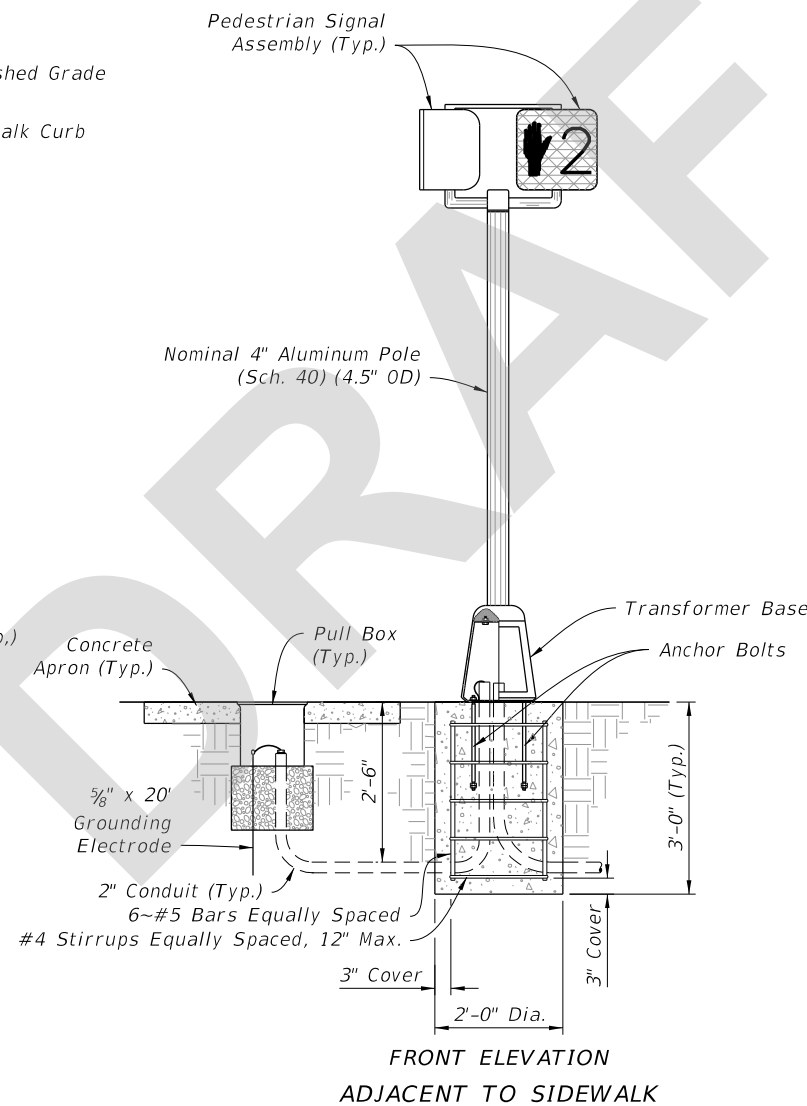
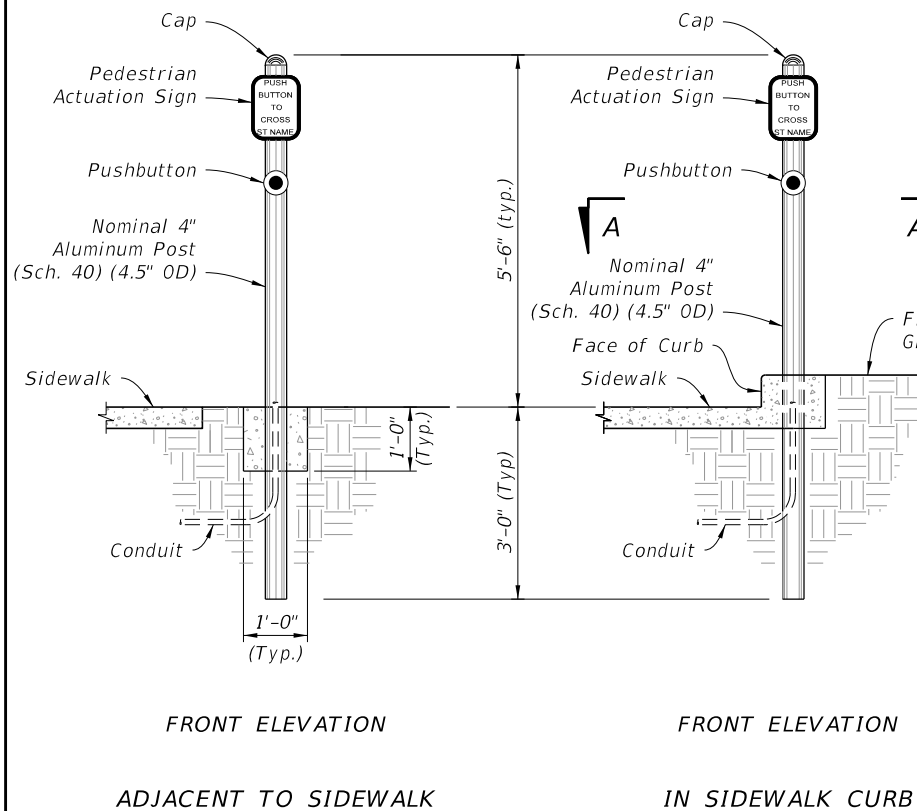
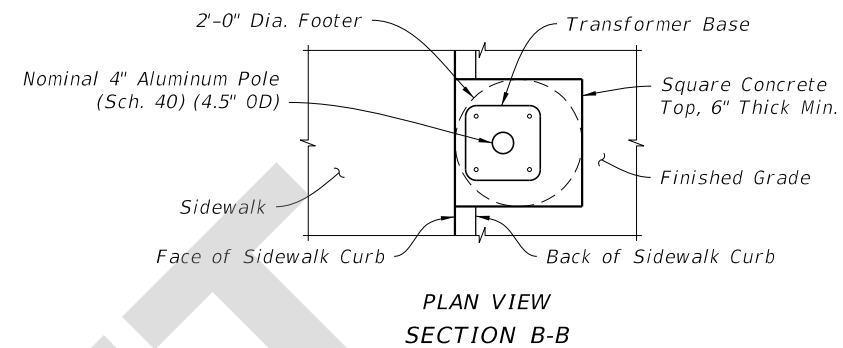
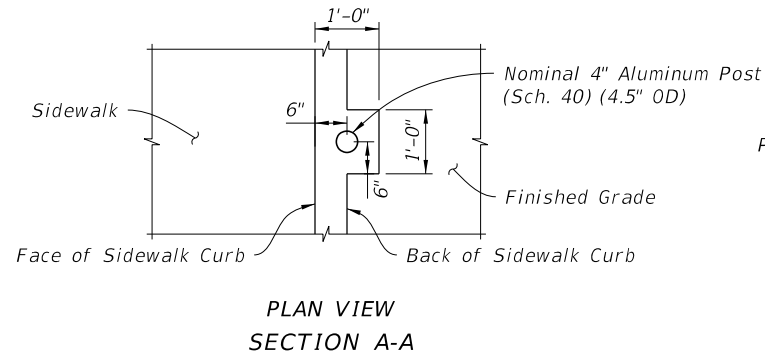
RESPONSE: The pole/posts are not changing with this update so there are no issues with the APL or additional costs incurred. This change was requested by the Structures Office to make callouts consistent with other Indexes that specify pole/post dimensions. The 4" nominal and 4.5" OD are the same callout in this scenario based on ASTM B429 which is a requirement of Spec 646. Although there is no conflict, Spec 646 will be updated to be consistent with the new callout in Indexes 646-001, 654-001, 695-001, and 700-120. The callout in the indexes will be updated to clarify that the poles/posts are not changing.

Change Made: Revise callouts in the Indexes and Spec to read "Nominal 4" Aluminum Pole (Sch. 40) (4.5" OD)"

Date: 9/10/2021

NOTES:

1. Work this Index with Specification 646.
2. For Pedestrian Signals see Index 653-001.
3. For Pedestrian Detector Assembly (i.e., Pushbutton and Sign) details see Index 665-001.
4. Footing may be Cast-In-Place (C-I-P) or Precast.
5. As an alternative to the direct buried "Post Mounted" Pedestrian Detector Assembly shown below, the post may be installed on a transformer base. Use a transformer base included on the APL approved as an alternative to a "Post Mounted" assembly,



POST MOUNTED

PEDESTAL MOUNTED

9/9/2021 2:49:52 PM

LAST REVISION	DESCRIPTION:
11/01/21	


**FY 2022-23
STANDARD PLANS**

**ALUMINUM POST AND PEDESTAL MOUNTED
PEDESTRIAN DETECTORS AND SIGNALS**

INDEX	SHEET
646-001	1 of 1