
ORIGINATION FORM

Proposed Revisions to a Standard Plans Index
(Please provide all information — Incomplete forms will be returned)

Contact Information:

Date: January 27, 2021
Originator: Richard Stepp
Phone: (850) 414-4313
Email: richard.stepp@dot.state.fl.us

Standard Plans:

Index Number: 641-010
Sheet Number (s): All
Index Title: Concrete Poles

Summary of the changes:

Redeveloped Index
Sheet 1: General Note, Table of Contents, and added Concrete Pole Assembly.
Sheet 2: New - Service Pole P-IIA
Sheet 3: New - Service Pole P-IIB
Sheet 4: New - Pedestal Pole P-IIC
Sheet 5: Previously Sheet 3 - Update Notes and Legend.
Sheet 6: Previously Sheet 4 - Update Notes and Legend.
Sheet 7: Previously Sheet 5 - Update Notes and Legend.
Sheet 8: Previously Sheet 6 - Update Notes and Legend.
Sheet 9: Previously Sheet 7 - Update Notes and Legend.
Sheet 10: Previously Sheet 8 - Update Notes and Legend.

Commentary / Background:

Other Affected Offices / Documents: (Provide name of person contacted)

Yes	No	
<input type="checkbox"/>	<input checked="" type="checkbox"/>	Other Standard Plans –
<input type="checkbox"/>	<input checked="" type="checkbox"/>	FDOT Design Manual –
<input type="checkbox"/>	<input checked="" type="checkbox"/>	Basis of Estimates Manual –
<input type="checkbox"/>	<input checked="" type="checkbox"/>	Standard Specifications –
<input type="checkbox"/>	<input checked="" type="checkbox"/>	Approved Product List –
<input type="checkbox"/>	<input checked="" type="checkbox"/>	Construction –
<input type="checkbox"/>	<input checked="" type="checkbox"/>	Maintenance –

Origination Package Includes:

(Email or hand deliver package to Rick Jenkins)

Yes	N/A	
<input checked="" type="checkbox"/>	<input type="checkbox"/>	Redline Mark-ups
<input type="checkbox"/>	<input type="checkbox"/>	Proposed Standard Plan Instruction (SPI)
<input type="checkbox"/>	<input type="checkbox"/>	Revised SPI
<input type="checkbox"/>	<input type="checkbox"/>	Other Support Documents

Implementation:

<input type="checkbox"/>	Design Bulletin (Interim)
<input type="checkbox"/>	DCE Memo
<input type="checkbox"/>	Program Mgmt. Bulletin
<input checked="" type="checkbox"/>	FY-Standard Plans (Next Release)

Contact the Roadway Design Office for assistance in completing this form

UPDATED:

GENERAL NOTES:

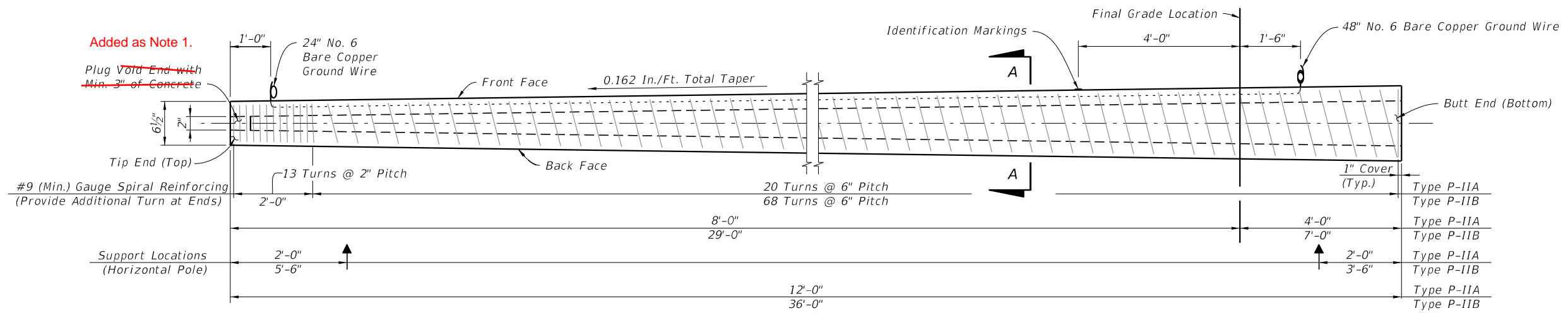
1. Work these Index drawings with the Strain Pole Schedule in the Plans.
2. Shop Drawings: This Index is considered fully detailed and no shop drawings are necessary. Submit shop drawings for minor modifications not detailed in the plans.
3. Materials:
 - A. Concrete: Class V Special or Class VI
 - B. Prestress Strands & Spiral Reinforcing: Specification Section 641
 - C. Hand and coupler cover plates: Non-corrosive material
 - D. Screws: Round headed, chrome plated
4. Fabrication:
 - A. Pole Taper for pole width, strands, reinforcing and void: 0.081 in/ft per face.
 - B. Concrete Cover: 1" minimum
 - C. Spiral Reinforcing: As shown, plus one turn for splices and two turns at both the tip and butt ends of the pole.
 - D. The design dimensions for Front Face (FF) and Back Face (BF) of the poles may vary transversely from the section shown by $\pm \frac{1}{4}$ " to assist with removal from forms. Balance addition and subtraction of the face widths to maintain section areas shown.
 - E. Tie ground wires to the interior of reinforcing steel to prevent displacement during concreting operations.
 - F. Cut the tip end of the prestressed strand first or simultaneously with the butt end.
 - G. Provide cover plates and screws for hand hole and couplers. Attach cover plates to the poles using lead anchors or embedded threaded inserts.
 - H. Provide Aluminum Identification Tags on the poles with the following information:
 - a. Financial Project ID.
 - b. Pole Manufacturer
 - c. Standard Pole Type Number
 - d. Pole Length (L)
5. Support locations are for strand release, storage, lifting and transport. Keep BF oriented downward until final erection.
6. Pick-up and support locations shown may vary within a tolerance of ± 3 ".
7. Two point attachment: provide an eye bolt hole for the messenger wire.
8. Tether Wire: When required, field-drill the eyebolt hole prior to installation

**ADDED:
CONCRETE POLE ASSEMBLY**

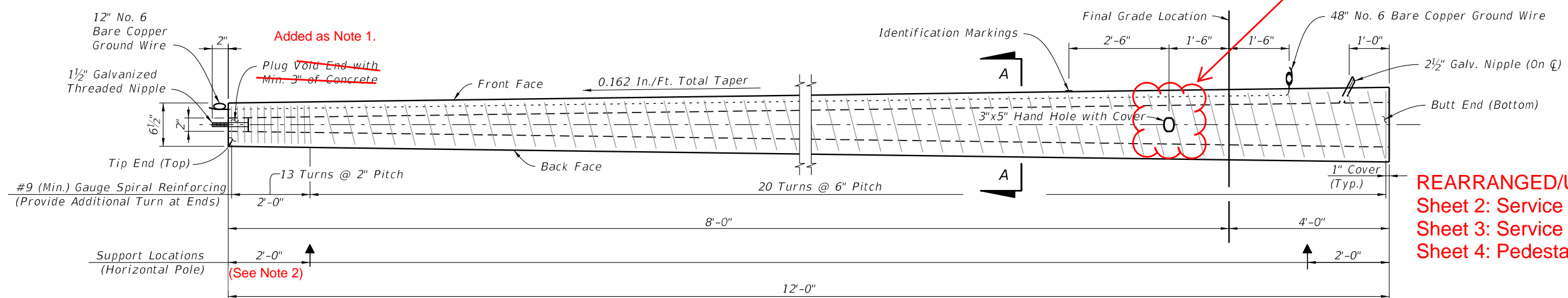
**ADDED:
TABLE OF CONTENTS**

10/16/2017 10:29:31 AM

LAST REVISION 11/01/17	REVISION	DESCRIPTION:	 FY 2018-19 STANDARD PLANS	CONCRETE POLES	INDEX 641-010	SHEET 1 of 8
---------------------------	----------	--------------	---	-----------------------	-------------------------	------------------------



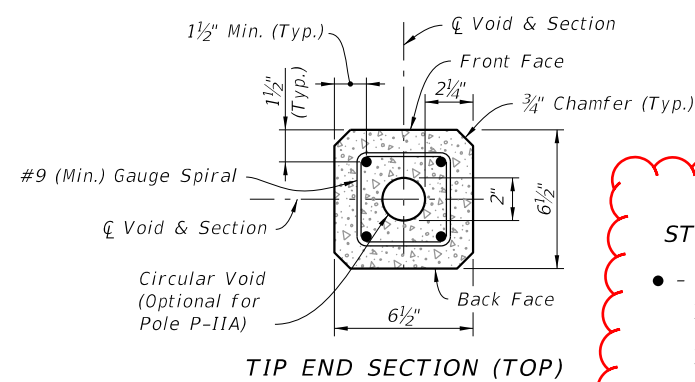
SERVICE POLE P-IIA (12 Ft.) & P-IIB (36 Ft.) ELEVATION
(Strands Not Shown)



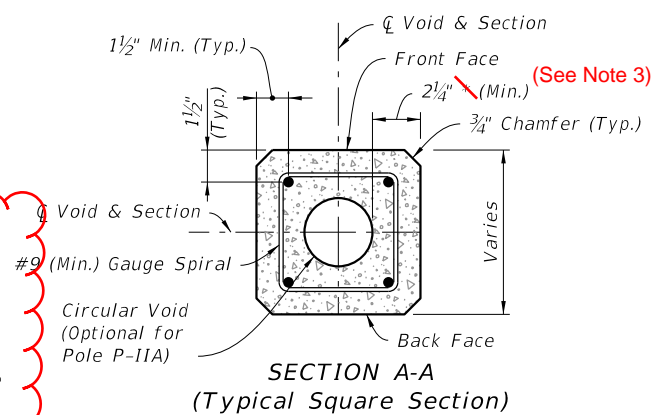
PEDESTAL POLE P-IIC (12 Ft.) ELEVATION
(Strands Not Shown)

Flip Hand Hole

REARRANGED/UPDATED:
Sheet 2: Service Pole P-IIA
Sheet 3: Service Pole P-IIB
Sheet 4: Pedestal Pole P-IIC



TIP END SECTION (TOP)



SECTION A-A
(Typical Square Section)

STRAND LEGEND

- Prestressed Strand:
0.5 in. ~ 24 kips Before Transfer or
0.375 in. ~ 14 kips Before Transfer
(4 strands total)

UPDATED:

UPDATED: ALL SHEETS

- NOTES:
1. Provide a minimum 3" concrete plug at the Tip End.
 4. Strands shown are continuous from Tip End to Butt End.
Elevation view scale is exaggerated vertically for clarity.
 2. For final erection, tilt pole upright with single point attachment located a distance of 4 Ft. (for P-IIA & P-IIC) or 10 Ft. (for P-IIB) from the Tip End.
 3. Dimension may vary from 2 1/4" to 3 1/2" to accommodate smaller radius of optional stepped (PVC) void. The void diameter shall not be less than 2".
 5. Strands not shown in the elevation view for clarity.

SERVICE AND PEDESTAL POLE TYPE P-II

2, 3 and 4 of 10

10/16/2017 10:29:31 AM

LAST REVISION	DESCRIPTION:
11/01/17	
11/01/21	

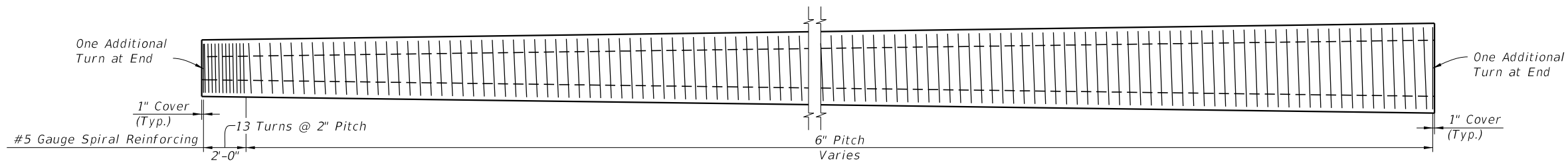


FY 2018-19
STANDARD PLANS

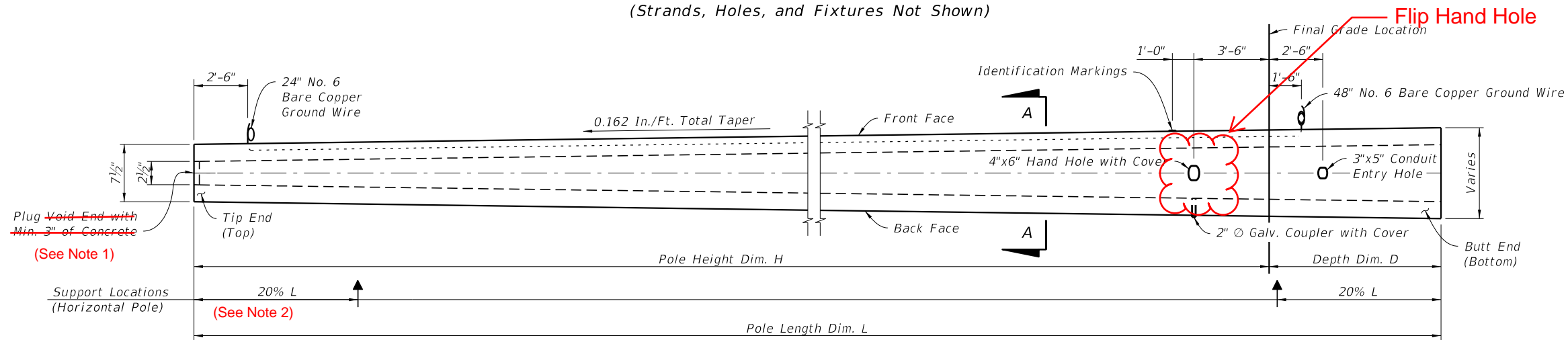
CONCRETE POLES

INDEX
641-010

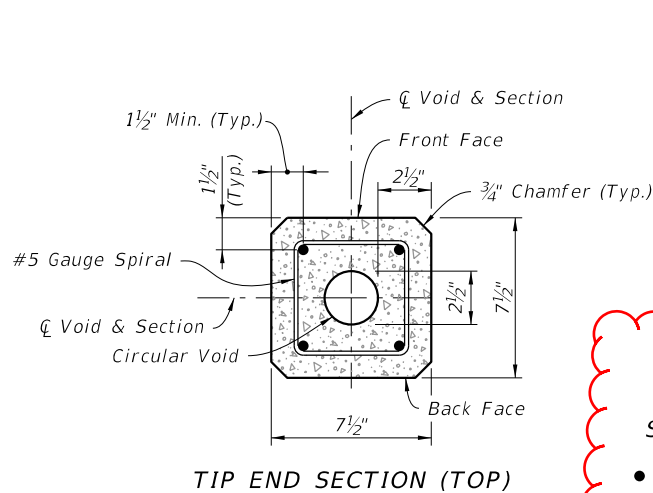
SHEET
2 of 8



SPIRAL REINFORCING ELEVATION
(Strands, Holes, and Fixtures Not Shown)



POLE ELEVATION
(Strands and Reinforcing Not Shown)

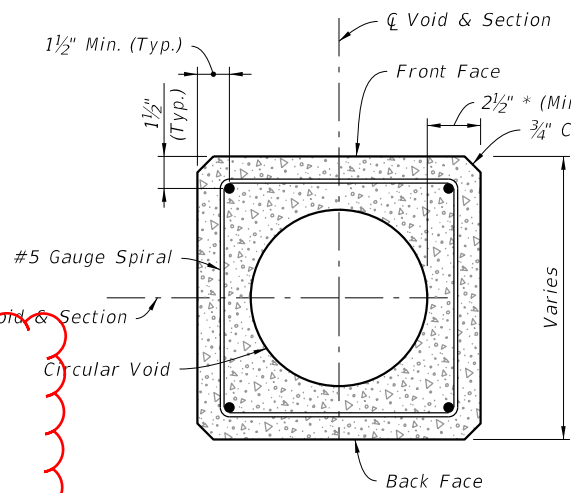


TIP END SECTION (TOP)

STRAND LEGEND

- - Prestressed Strand: 0.5 in. ~ 31 kips Before Transfer (4 strands total)

UPDATED:



SECTION A-A
(Typical Square Section)

UPDATED: See Sheet 2

NOTES:

Strands shown are continuous from Tip End to Butt End.

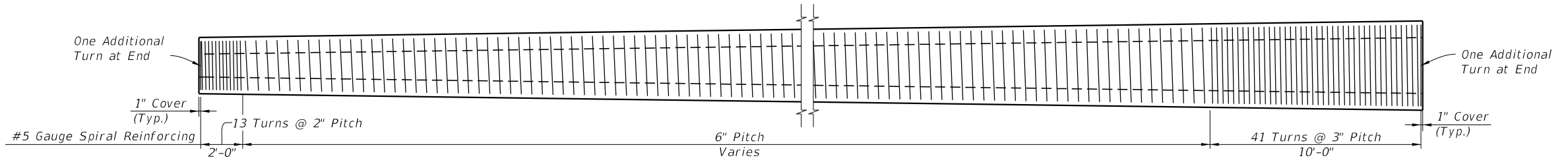
Elevation view scale is exaggerated vertically for clarity.

For final erection, tilt pole upright with single point attachment located a distance 33.3% L from Tip End.

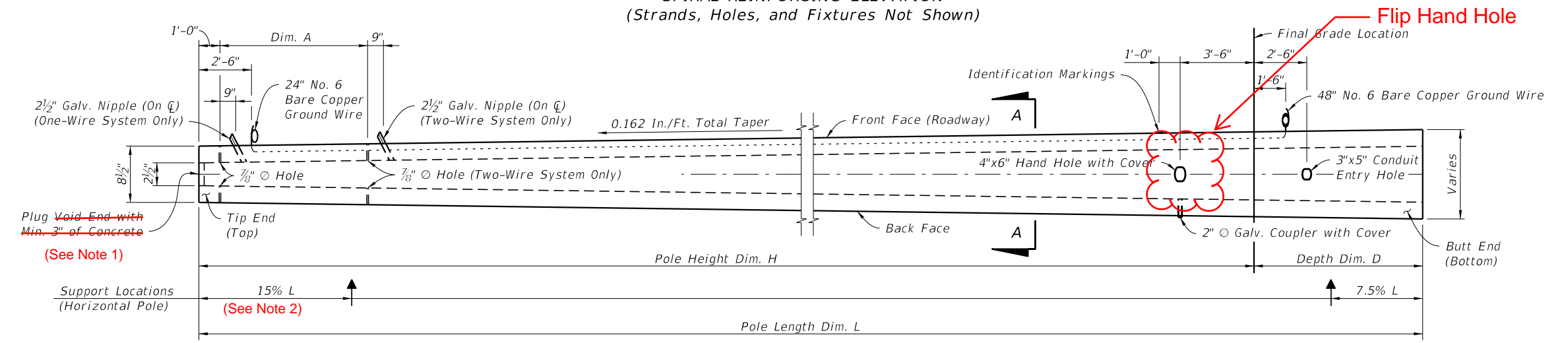
* Dimension may vary from 2 1/2" to 3 3/4" to accommodate smaller radius of optional stepped (PVC) void. The void diameter shall not be less than 2 1/2".

10/16/2017 10:29:32 AM

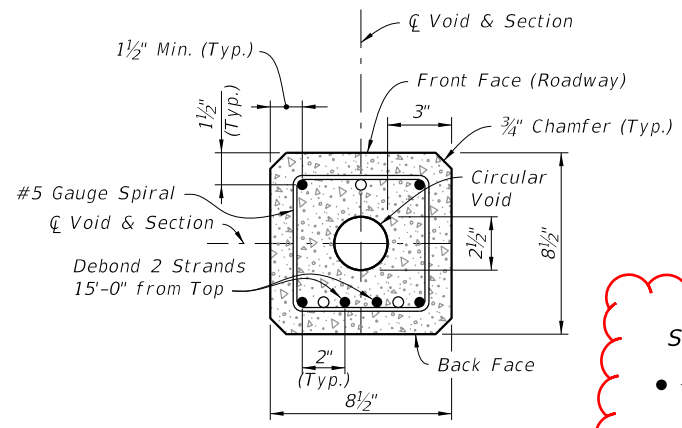
LAST REVISION	DESCRIPTION
11/01/17	
11/01/21	



SPIRAL REINFORCING ELEVATION
(Strands, Holes, and Fixtures Not Shown)



POLE ELEVATION
(Strands and Reinforcing Not Shown)

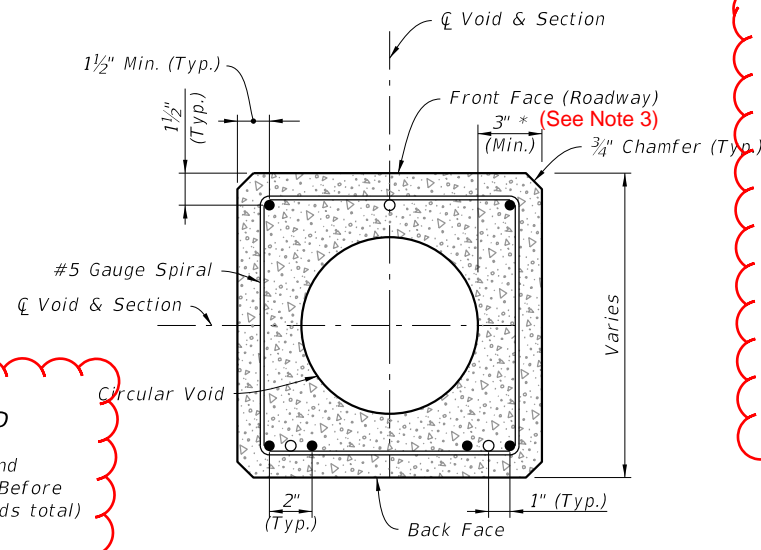


TIP END SECTION (TOP)
(For Dormant Strand Locations See Section A-A)

STRAND LEGEND

- - Prestressed Strand
0.5 in. ~ 31 kips Before Transfer (6 strands total)
- - Dormant Strand
0.5 in. (3 strands total)
One 24\" Splice Allowed Per Strand

UPDATED:



SECTION A-A
(Typical Square Section)

UPDATED: See Sheet 2

NOTES:

- Strands shown are continuous from Tip End to Butt End.
- Elevation view scale is exaggerated vertically for clarity.
- For final erection, tilt pole upright with single point attachment located a distance 20% L from the Tip End.
- * Dimension may vary from 3\" to 4 1/4\" to accommodate smaller radius of optional stepped (PVC) void. The void diameter shall not be less than 2 1/2\".

STRAIN POLE TYPE P-IV

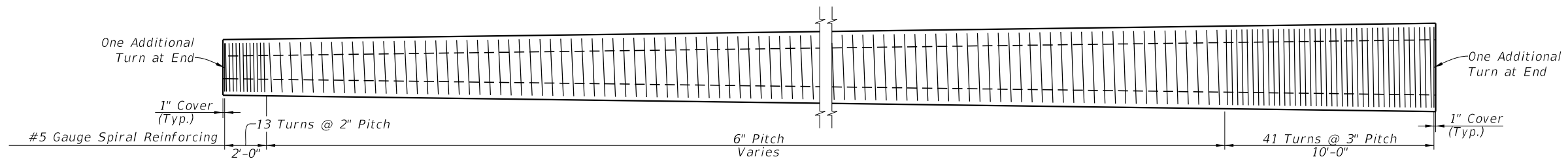
10/16/2017 10:29:32 AM

LAST REVISION	DESCRIPTION:
11/01/17	
11/01/21	

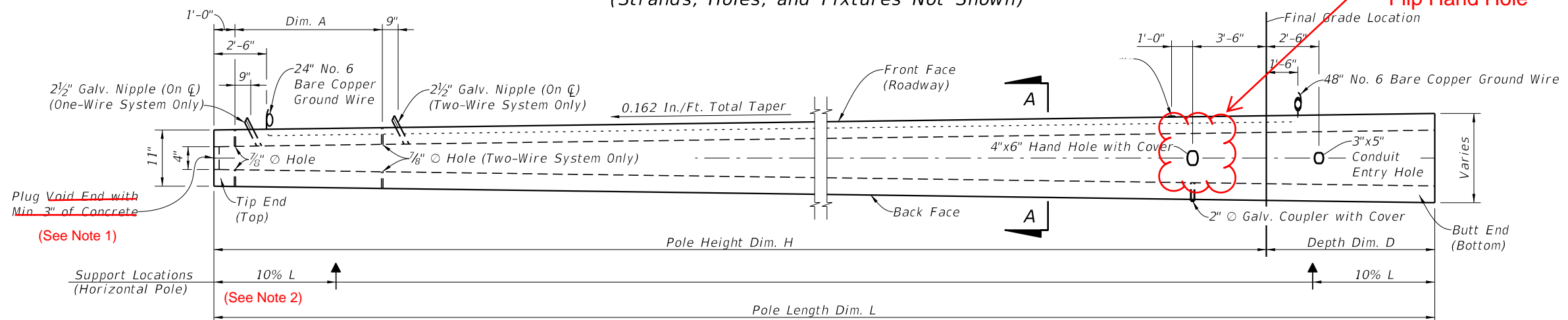
FDOT
FY 2018-19
STANDARD PLANS

CONCRETE POLES

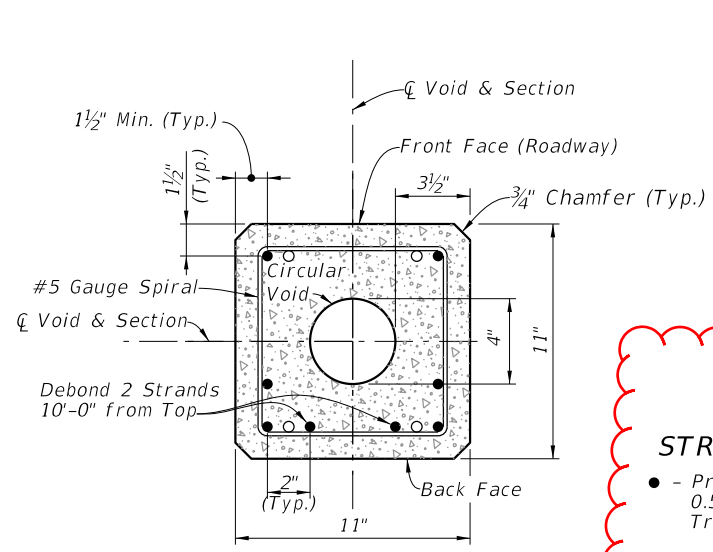
INDEX	SHEET
641-010	4 of 8



SPIRAL REINFORCING ELEVATION
(Strands, Holes, and Fixtures Not Shown)



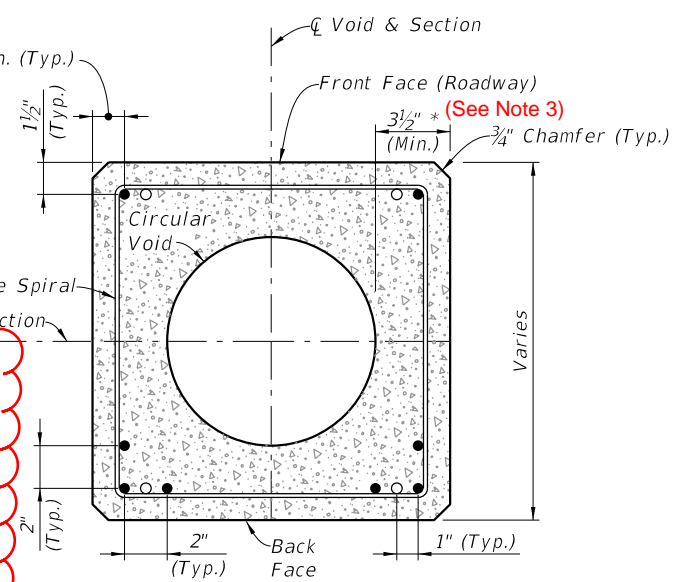
POLE ELEVATION
(Strands and Reinforcing Not Shown)



TIP END SECTION (TOP)
(For Dormant Strand Locations, See Section A-A)

- STRAND LEGEND**
- - Prestressed Strand
0.5 in. ~ 31 kips Before Transfer (8 strands total)
 - - Dormant Strand
0.5 in. (4 strands total)
One 24" Splice Allowed Per Strand

UPDATED:



SECTION A-A
(Typical Square Section)

UPDATED: See Sheet 2

NOTES:

Strands shown are continuous from Tip End to Butt End.

Elevation view scale is exaggerated vertically for clarity.

For final erection, tilt pole upright with single point attachment located a distance 12.5% L from the Tip End.

* Dimension may vary from 3 1/2" to 4 3/4" to accommodate smaller radius of optional stepped (PVC) void. The void diameter shall not be less than 4".

STRAIN POLE TYPE P-V

10/16/2017 10:29:33 AM

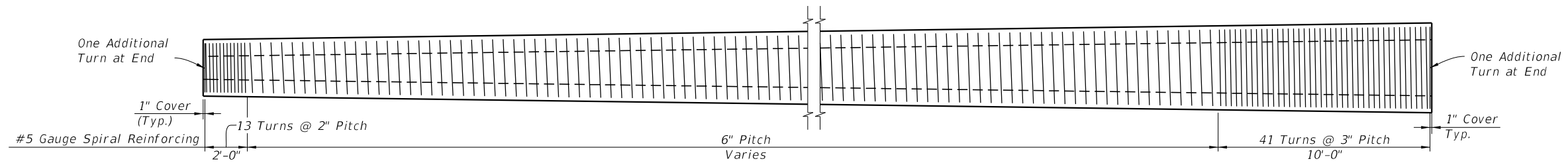
LAST REVISION	DESCRIPTION:
11/01/17	
11/01/21	

FY 2018-19
STANDARD PLANS

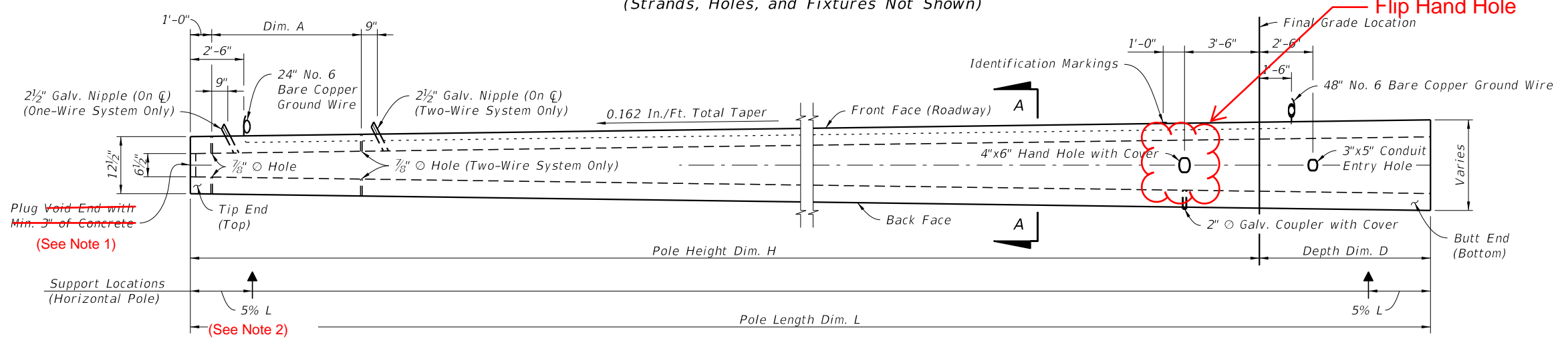
CONCRETE POLES

7 of 10

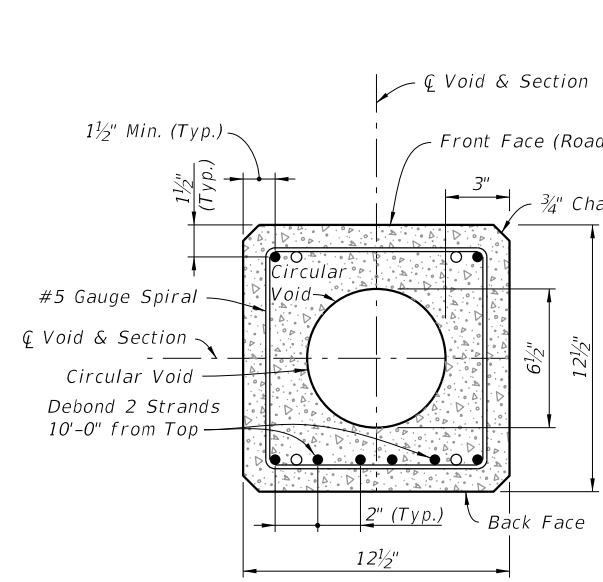
INDEX	SHEET
641-010	5 of 8



SPIRAL REINFORCING ELEVATION
(Strands, Holes, and Fixtures Not Shown)



POLE ELEVATION
(Strands and Reinforcing Not Shown)

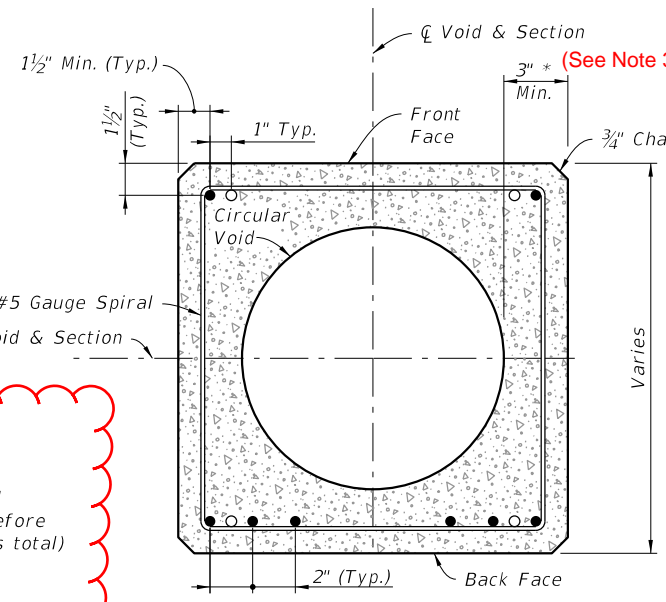


TIP END SECTION (TOP)
(For Dormant Strand Locations, See Section A-A)

STRAND LEGEND

- - Prestressed Strand
0.5 in. ~ 31 kips Before Transfer (8 strands total)
- - Dormant Strand
0.5 in. (4 strands total)
One 24" Splice Allowed Per Strand

UPDATED:



SECTION A-A
(Typical Square Section)

NOTES UPDATED: See Sheet 2

Strands shown are continuous from Tip End to Butt End.

Elevation view scale is exaggerated vertically for clarity.

For final erection, tilt pole upright with single point attachment located a distance 10% L from Tip End.

* Dimension may vary from 3" to 4 1/4" to accommodate smaller radius of optional stepped (PVC) void. The void diameter shall not be less than 6 1/2".

10/16/2017 10:29:34 AM

LAST REVISION	DESCRIPTION
11/01/17	
11/01/21	

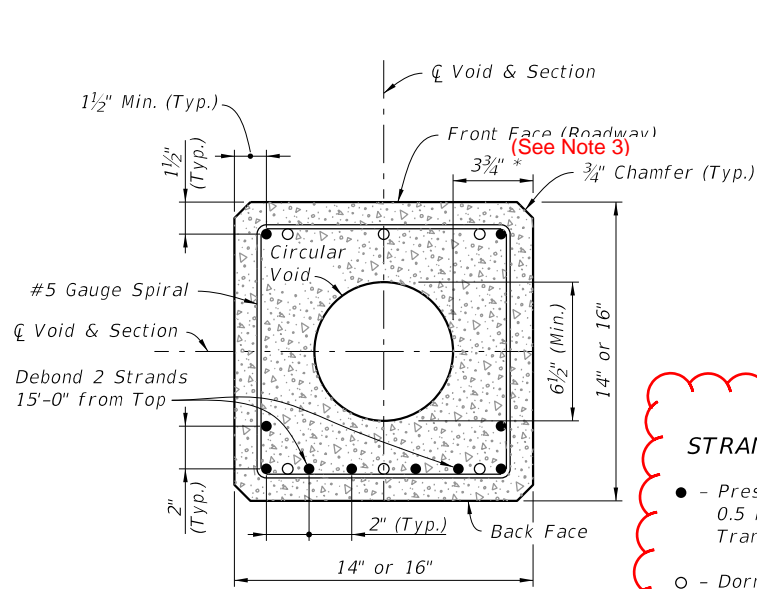
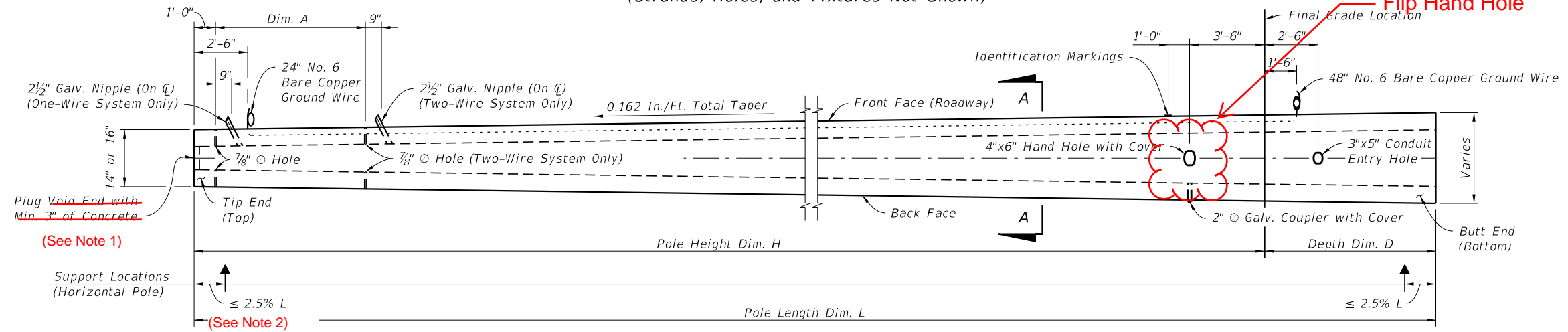
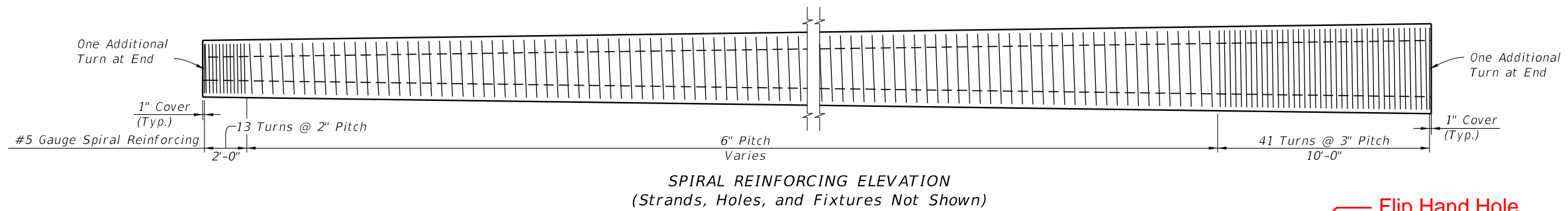
FDOT FY 2018-19 STANDARD PLANS

CONCRETE POLES

STRAIN POLE TYPE P-VI

8 of 10

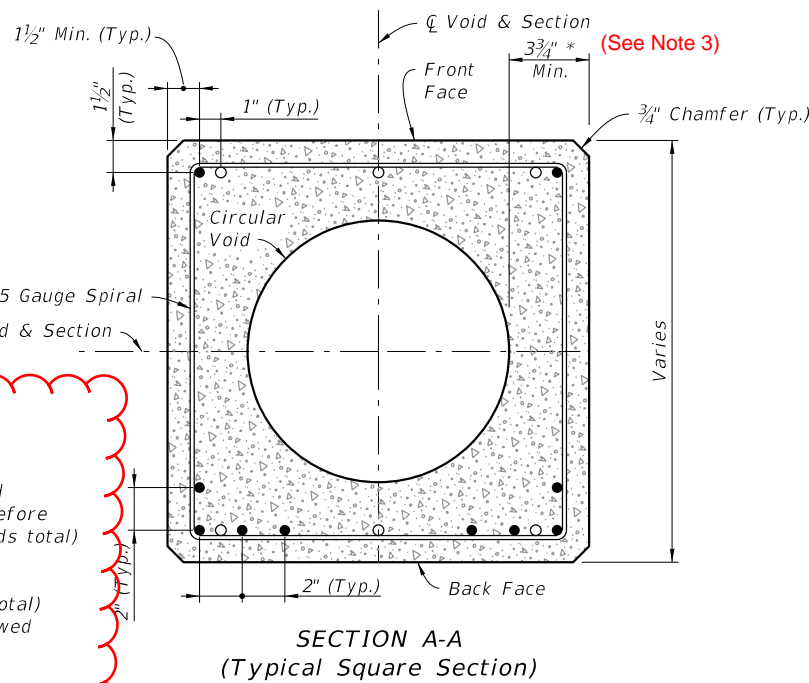
INDEX	SHEET
641-010	6 of 8



STRAND LEGEND

- - Prestressed Strand
0.5 in. ~ 31 kips Before Transfer (10 strands total)
- - Dormant Strand
0.5 in. (6 strands total)
One 24" Splice Allowed Per Strands

UPDATED:



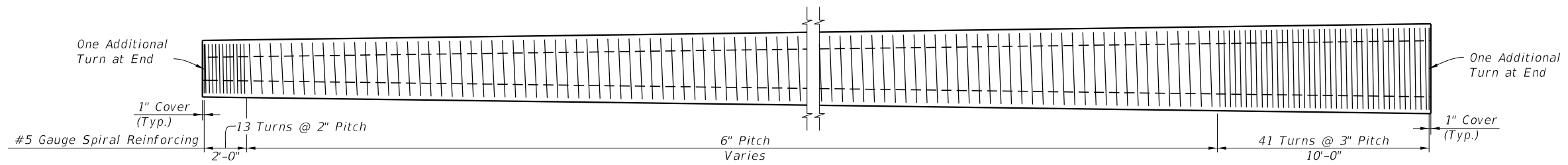
UPDATED: See Sheet 2

NOTES:

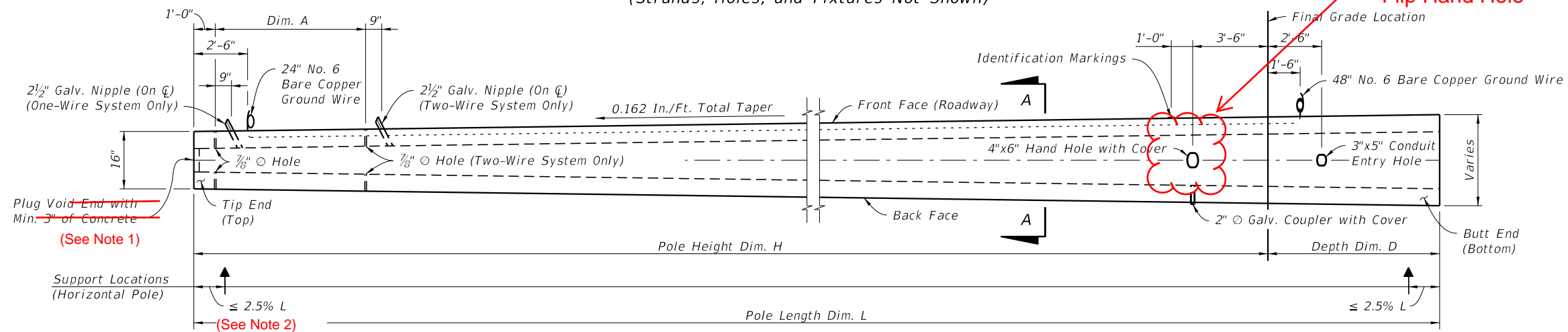
- Strands shown are continuous from Tip End to Butt End.
- Elevation view scale is exaggerated vertically for clarity.
- For final erection, tilt pole upright with single point attachment located a distance 10% L from the Tip End.
- * Dimension may vary from 3 3/4" to 5" to accommodate smaller radius of optional stepped (PVC) void. The void diameter shall not be less than 6 1/2".

10/16/2017 10:29:34 AM

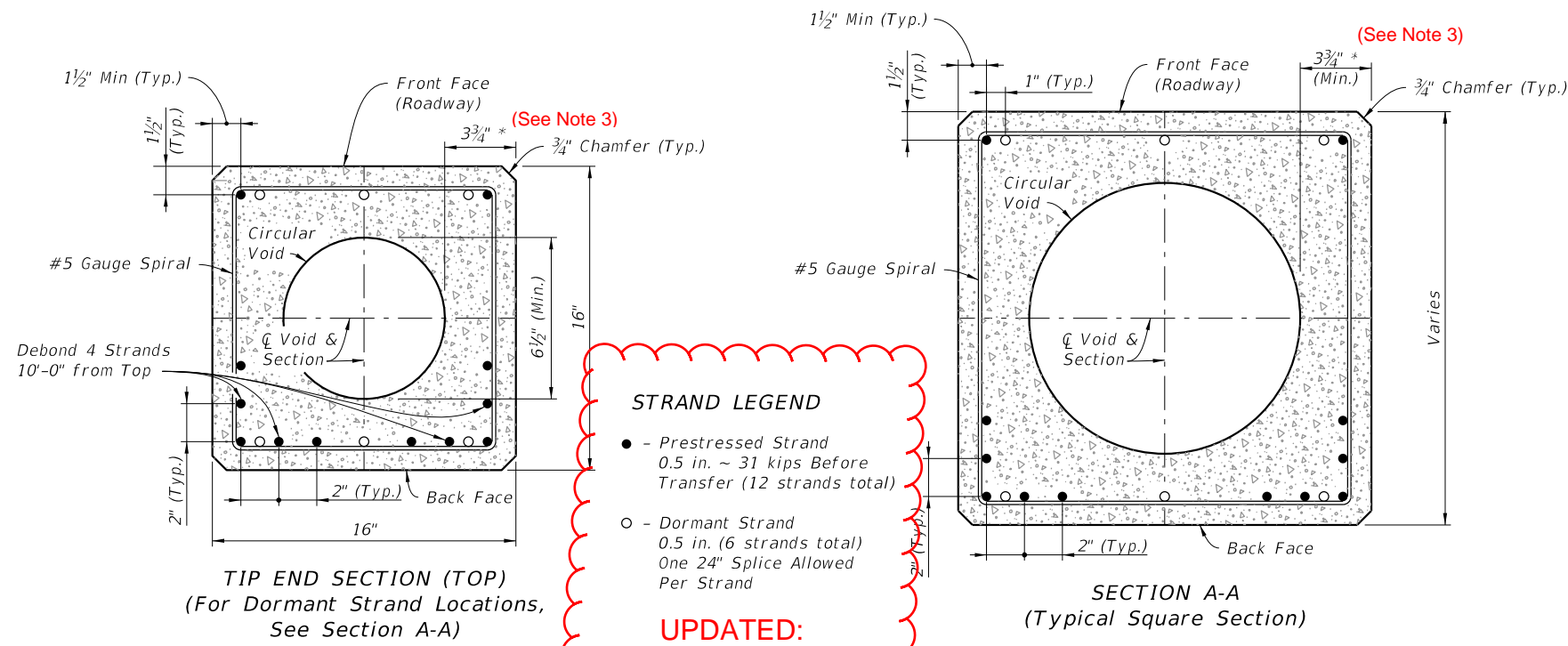
LAST REVISION	11/01/21
REVISION	



SPIRAL REINFORCING ELEVATION
(Strands, Holes, and Fixtures Not Shown)



POLE ELEVATION
(Strands and Reinforcing Not Shown)



STRAND LEGEND

- - Prestressed Strand
0.5 in. ~ 31 kips Before Transfer (12 strands total)
- - Dormant Strand
0.5 in. (6 strands total)
One 24" Splice Allowed Per Strand

UPDATED:

UPDATED: See Sheet 2

NOTES:

Strands shown are continuous from Tip End to Butt End.

Elevation view scale is exaggerated vertically for clarity.

For final erection, tilt pole upright with single point attachment located a distance 10% L from the Tip End.

* Dimension may vary from 3 3/4" to 5" to accommodate smaller radius of optional stepped (PVC) void. The void diameter shall not be less than 6 1/2".

STRAIN POLE TYPE P-VIII

10/16/2017 10:29:35 AM

LAST REVISION	DESCRIPTION:
11/01/17	
11/01/21	

FDOT FY 2018-19 STANDARD PLANS

CONCRETE POLES

INDEX	SHEET
641-010	8 of 8

GENERAL NOTES:

1. Work these Index Sheets with the Strain Pole Schedule in the Plans. See Index 634-001 for corresponding signal cable and span wire installation details.

2. Shop Drawings:

This Index is considered fully detailed and no shop drawing are necessary. Submit shop drawings only for minor modifications not detailed in the Plans.

3. Materials:

- A. Concrete: Class V Special or Class VI
- B. Prestress Strands & Spiral Reinforcing: Specification 641
- C. Hand and coupler cover plates: Non-corrosive material
- D. Screws: Round headed, chrome plated

4. Fabrication:

- A. Pole Total Taper shown is for pole width, strands, reinforcing and void (0.081 in/ft per face).
- B. Concrete Cover: 1" minimum.
- C. Spiral Reinforcing: Place as shown, and add one turn for splices and two turns at both the tip and butt ends of the pole.
- D. The design dimensions for Front Face (FF) and Back Face (BF) of the poles may vary transversely from the section shown by $\pm 1/4"$ to assist with removal from forms. Balance addition and subtraction of the face widths to maintain section areas shown.
- E. Tie ground wires to the interior of reinforcing steel to prevent displacement during concreting operations.
- F. Cut the tip end of the prestressed strand either first or simultaneously with the butt end.
- G. Provide cover plates and screws for hand hole and couplers. Attach cover plates to the poles using lead anchors or embedded threaded inserts.
- H. Provide Aluminum Identification Tag on the pole with the following information:
 - a. Financial Project ID.
 - b. Pole Manufacturer
 - c. Standard Pole Type Number
 - d. Pole Length (L)

5. Support Points:

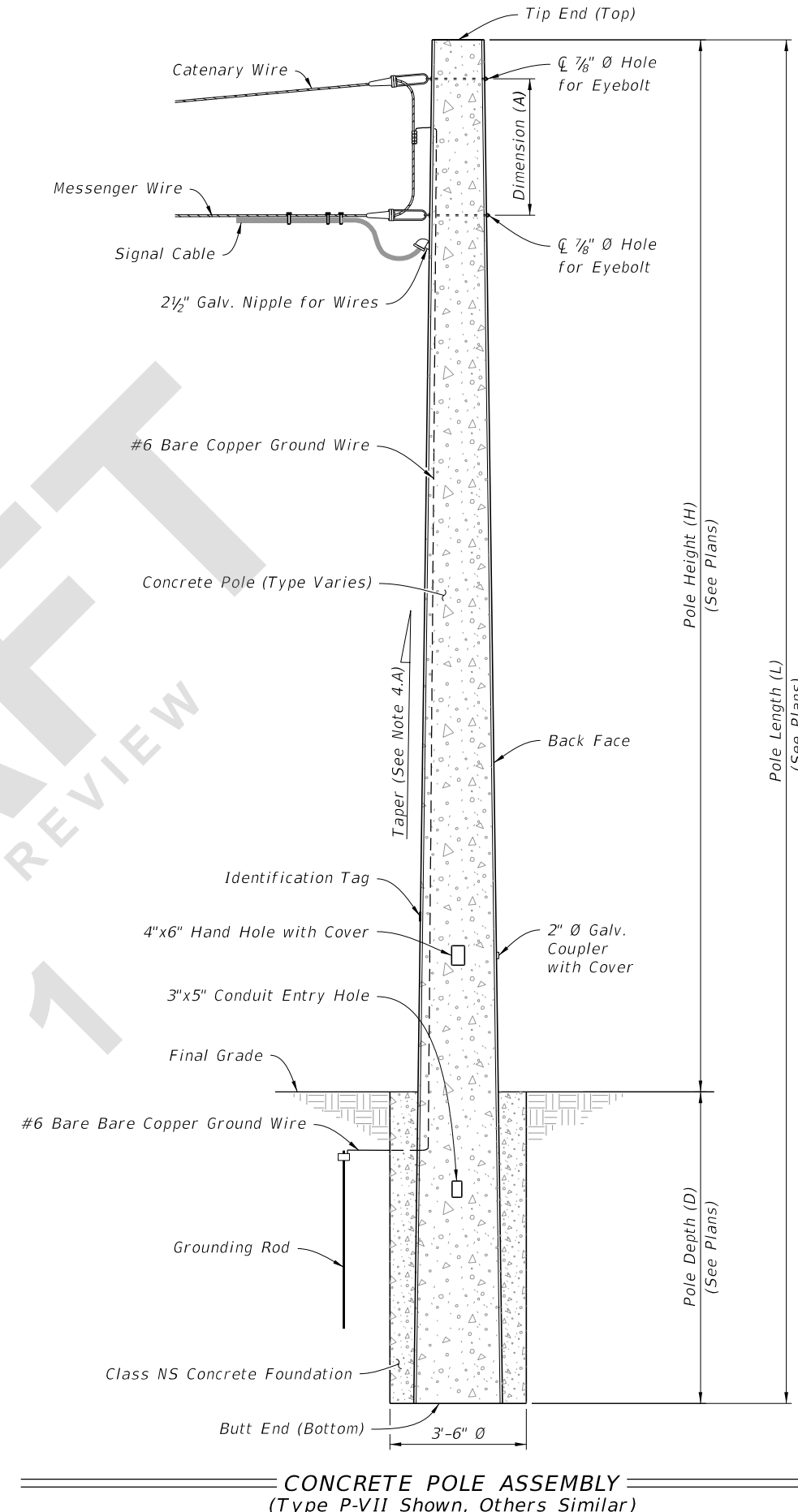
Support Points shown may vary within a tolerance of $\pm 3"$.

Horizontal Pole Support Points shown are for strand release, storage, handling and transport of the horizontal pole. Keep Back Face oriented downward until final erection.

6. Two point attachment: Provide an eye bolt hole for the messenger wire.

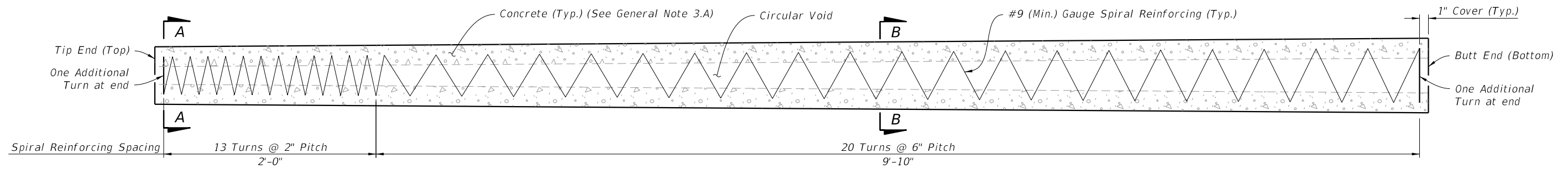
7. Tether Wire: When required, field-drill the eyebolt hole prior to installation.

TABLE OF CONTENTS:	
Sheet	Description
1	General Notes and Contents
2	Service Pole - Type P-IIA (12 Ft.)
3	Service Pole - Type P-IIB (36 Ft.)
4	Pedestal Pole - Type P-IIC (12 Ft.)
5	Pole - Type P-III
6	Strain Pole - Type P-IV
7	Strain Pole - Type P-V
8	Strain Pole - Type P-VI
9	Strain Pole - Type P-VII
10	Strain Pole - Type P-VIII

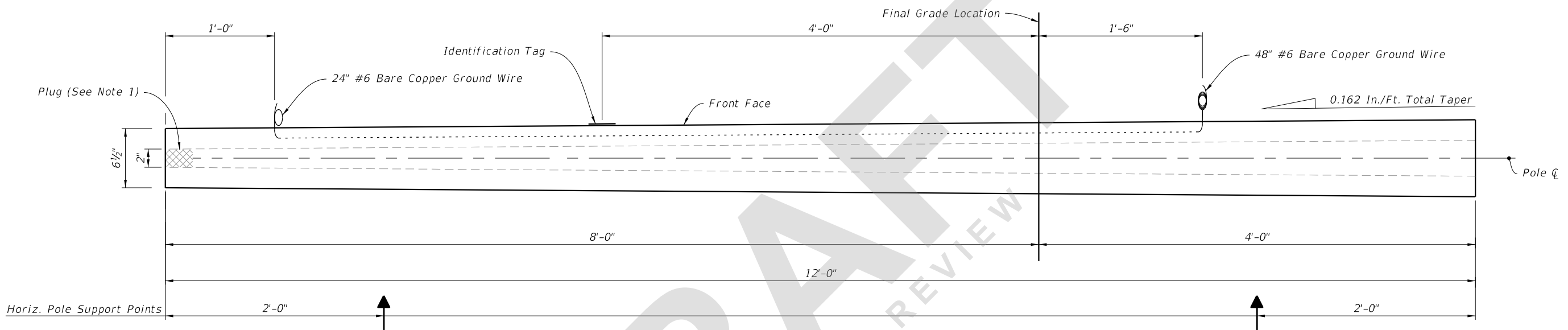


CONCRETE POLE ASSEMBLY
(Type P-VII Shown, Others Similar)

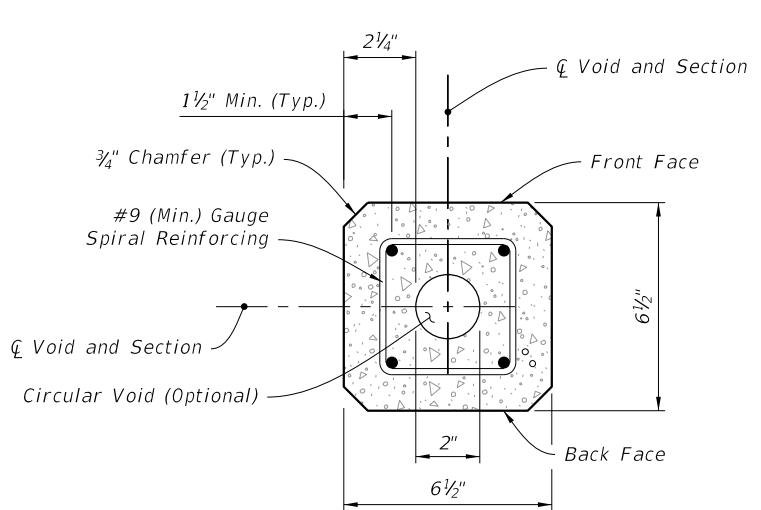
7/23/2021 4:55:33 PM



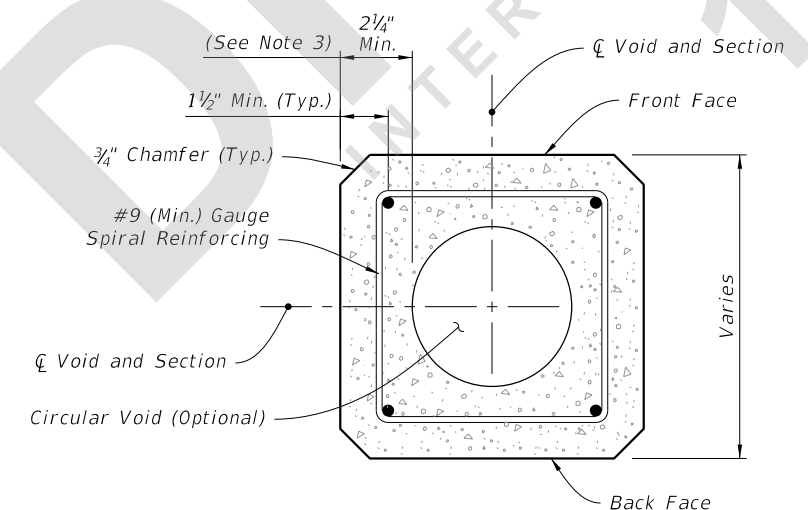
SPIRAL REINFORCING ELEVATION
(Strands and Fixtures Not Shown)



POLE ELEVATION
(Strands and Reinforcing Not Shown)



SECTION A-A - (Tip End)



SECTION B-B (Typical Square Section)

NOTES:

1. Provide a minimum 3" concrete plug at the Tip End.
2. For final erection, tilt pole upright with single point attachment located a distance of 4 feet from the Tip End.
3. Dimension may vary from 2 1/4" to 3 1/2" to accommodate smaller radius of optional stepped (PVC) void. The minimum void diameter is 2".
4. Strands shown are continuous from Tip End to Butt End.
5. Strands are not shown in the elevation views for clarity.

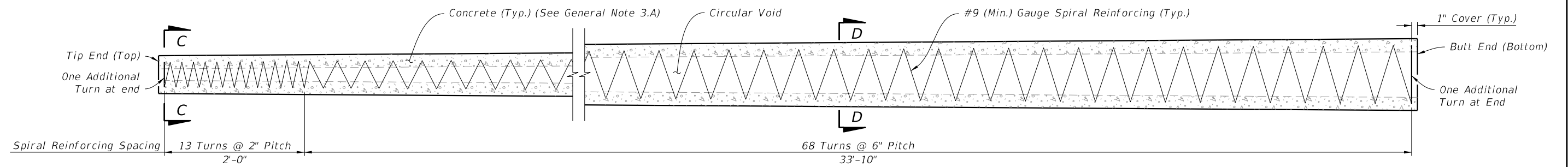
LEGEND:

- Prestressed Strand:
0.5 in. ~ 24 kips before transfer or
0.375 in. ~ 14 kips before transfer (4 strands total)

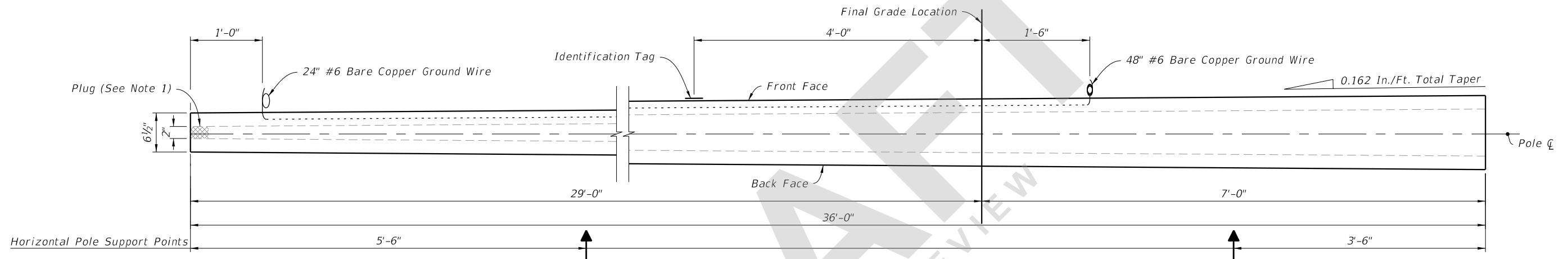
7/23/2021 4:55:38 PM

LAST REVISION 11/01/21	DESCRIPTION:	 FY 2022-23 STANDARD PLANS	CONCRETE POLES	INDEX 641-010	SHEET 2 of 10
---------------------------	--------------	--	----------------	------------------	------------------

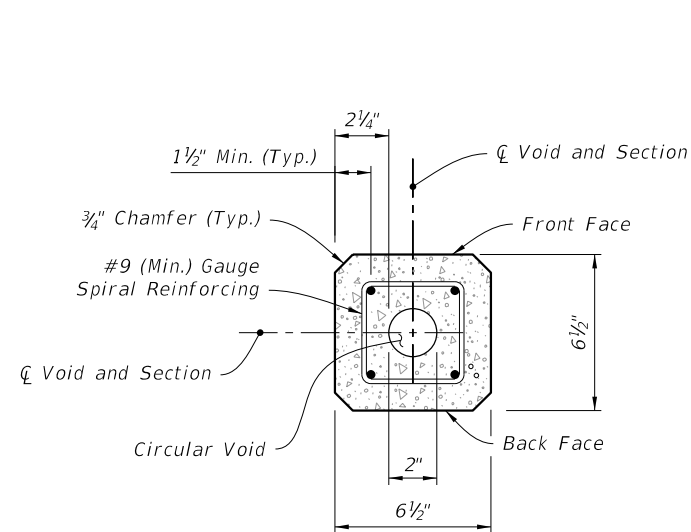
SERVICE POLE - TYPE P-IIA (12 Ft.)



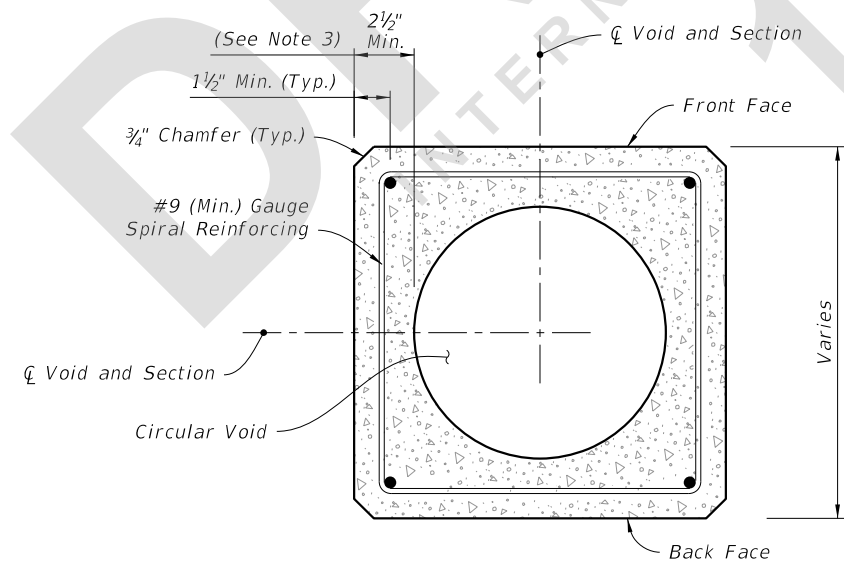
SPIRAL REINFORCING ELEVATION
(Strands and Fixtures Not Shown)



POLE ELEVATION
(Strands and Reinforcing Not Shown)



SECTION C-C (Tip End)



SECTION D-D (Typical Square Section)

NOTES:

1. Provide a minimum 3" concrete plug at the Tip End.
2. For final erection, tilt pole upright with single point attachment located a distance of 10 feet from the Tip End.
3. Dimension may vary from 2 1/4" to 3 1/2" to accommodate smaller radius of optional stepped (PVC) void. The minimum void diameter is 2".
4. Strands shown are continuous from Tip End to Butt End.
5. Strands are not shown in the elevation views for clarity.

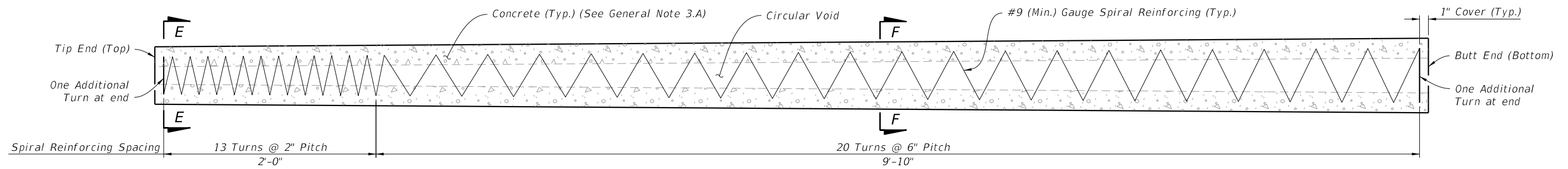
LEGEND:

- Prestressed Strand:
0.5 in. ~ 24 kips before transfer or
0.375 in. ~ 14 kips before transfer
(4 strands total)

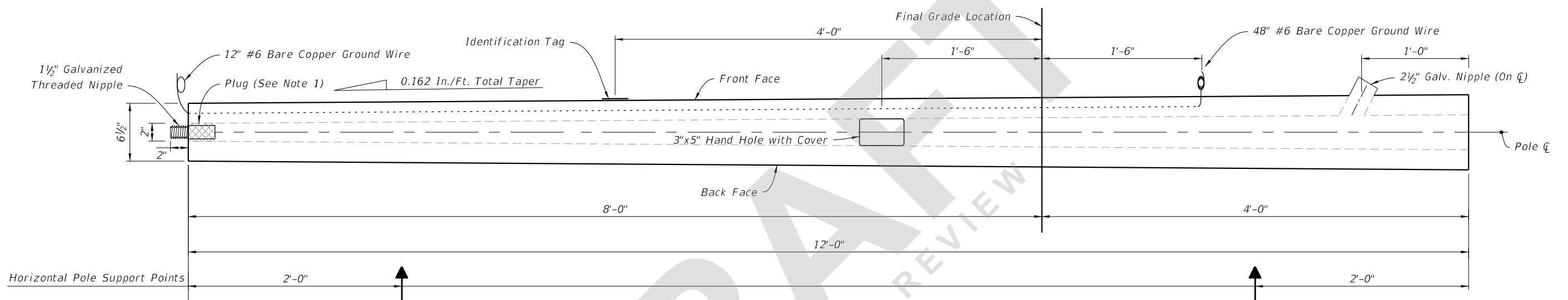
SERVICE POLE TYPE P-IIB (36 Ft.)

7/23/2021 4:55:42 PM

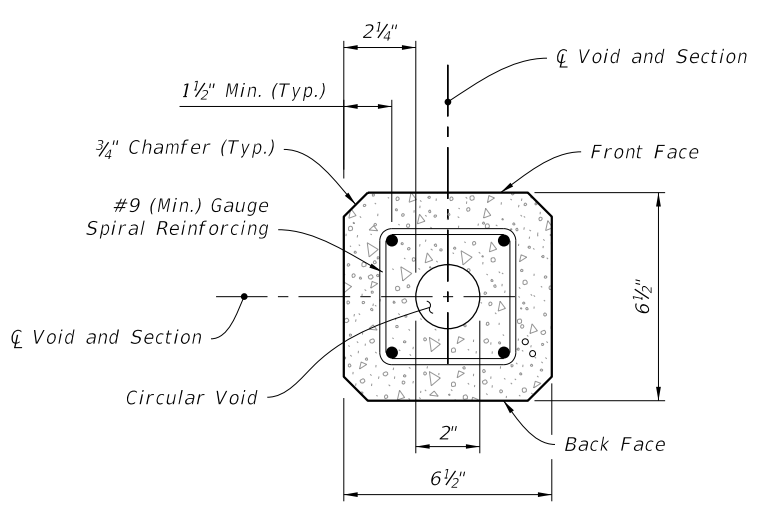
LAST REVISION 11/01/21	REVISION	DESCRIPTION:		FY 2022-23 STANDARD PLANS	CONCRETE POLES	INDEX 641-010	SHEET 3 of 10
---------------------------	----------	--------------	--	------------------------------	----------------	------------------	------------------



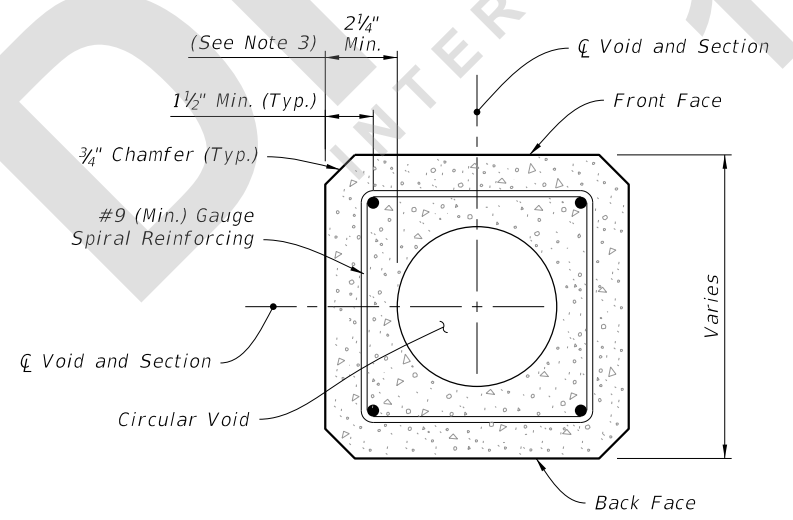
SPIRAL REINFORCING ELEVATION
(Strands, Holes, and Fixtures Not Shown)



POLE ELEVATION
(Strands and Reinforcing Not Shown)



SECTION E-E (Tip End)



SECTION F-F (Typical Square Section)

NOTES:


1. Provide a minimum 3" concrete plug at the Tip End.
2. For final erection, tilt pole upright with single point attachment located a distance of 4 feet from the Tip End.
3. Dimension may vary from 2 1/4" to 3 1/2" to accommodate smaller radius of optional stepped (PVC) void. The minimum void diameter is 2".
4. Strands shown are continuous from Tip End to Butt End.
5. Strands are not shown in the elevation views for clarity.

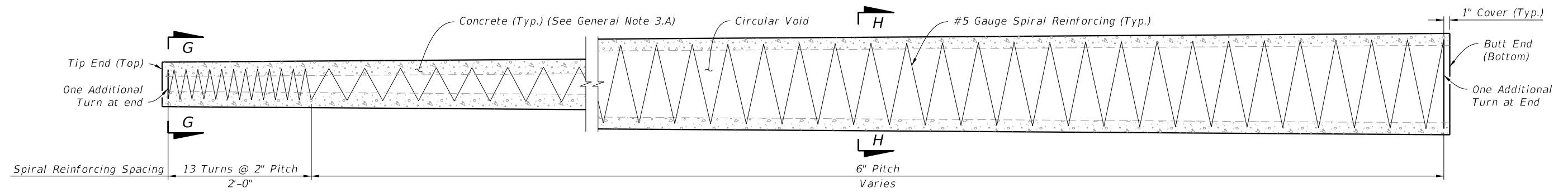
LEGEND:

- Prestressed Strand:
0.5 in. ~ 24 kips before transfer or
0.375 in. ~ 14 kips before transfer
(4 strands total)

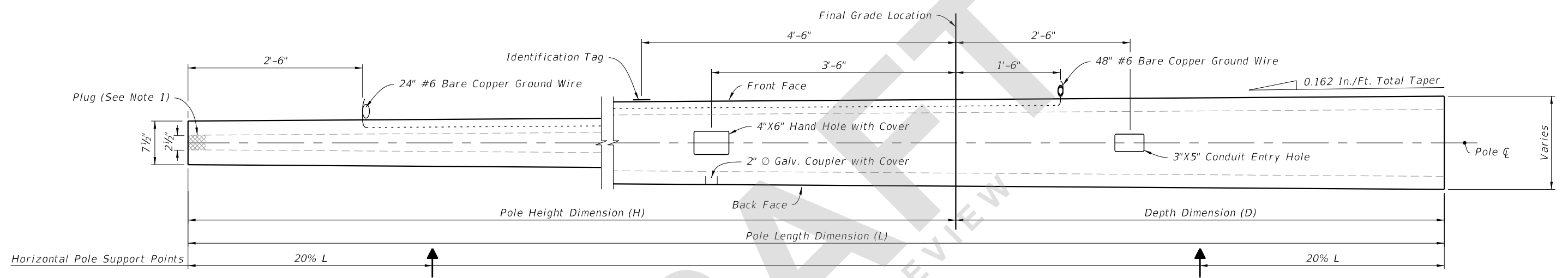
PEDESTAL - TYPE P-IIC (12 Ft.)

7/23/2021 4:55:47 PM

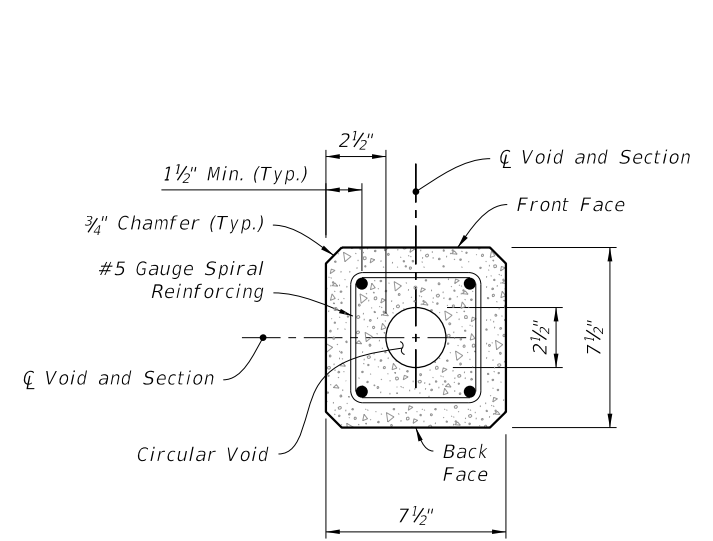
LAST REVISION 11/01/21	DESCRIPTION:	 FY 2022-23 STANDARD PLANS	CONCRETE POLES	INDEX 641-010	SHEET 4 of 10
---------------------------	--------------	--	-----------------------	------------------	------------------



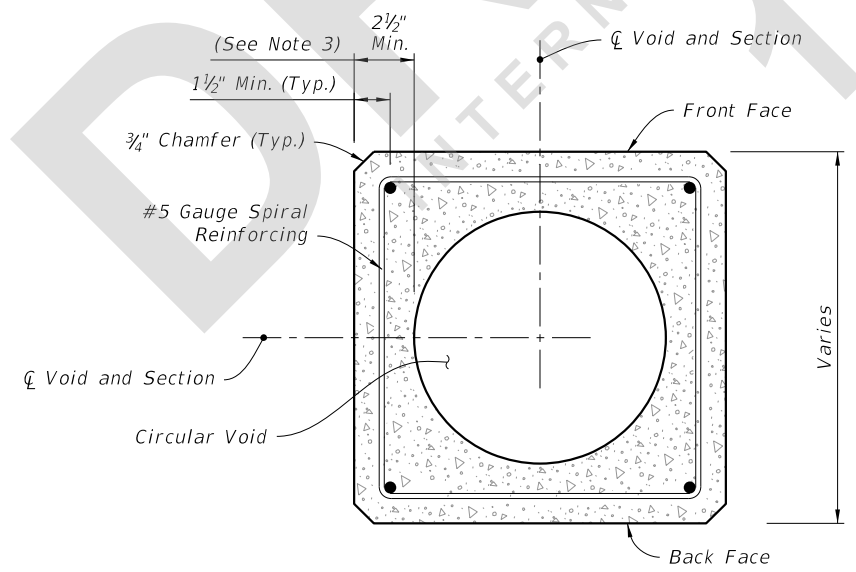
SPIRAL REINFORCING ELEVATION
(Strands, Holes and Fixtures Not Shown)



POLE ELEVATION
(Strands and Reinforcing Not Shown)



SECTION G-G (Tip End)



SECTION H-H (Typical Square Section)

NOTES:

1. Provide a minimum 3" concrete plug at the Tip End.
2. For final erection, tilt pole upright with single point attachment located a distance of 33% L from the Tip End.
3. Dimension may vary from 2 1/2" to 3 3/4" to accommodate smaller radius of optional stepped (PVC) void. The minimum void diameter is 2 1/2".
4. Strands shown are continuous from Tip End to Butt End.
5. Strands are not shown in the elevation views for clarity.

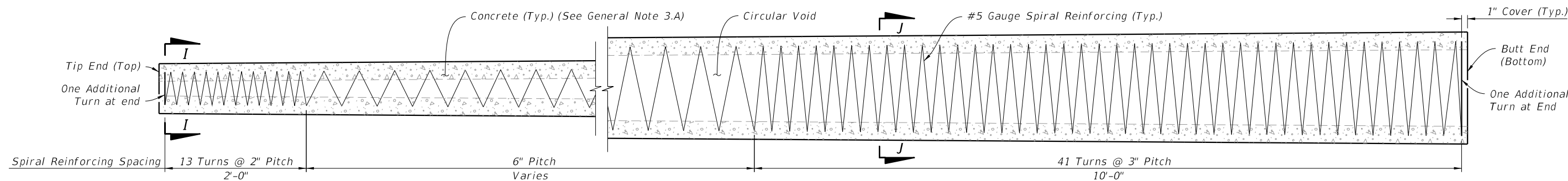
LEGEND:

- Prestressed Strand:
0.5 in. ~ 31 kips before transfer (4 strands total)

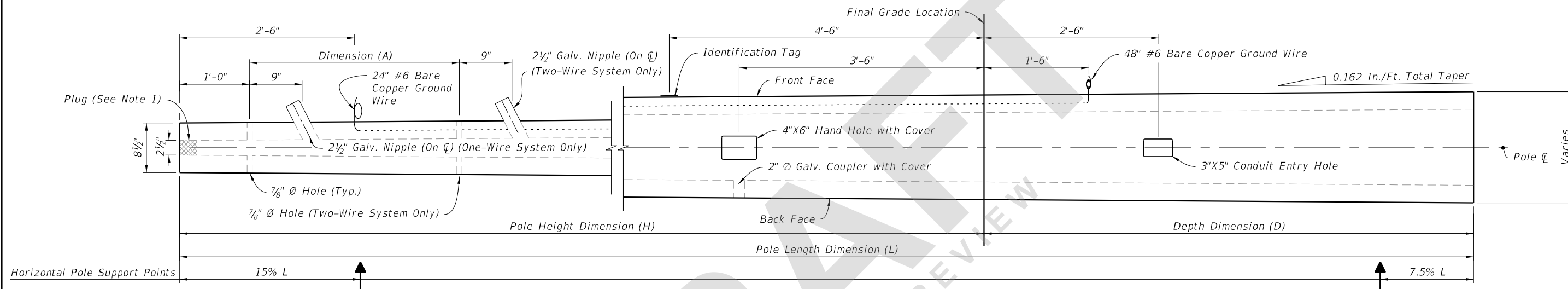
7/23/2021 4:55:51 PM

LAST REVISION 11/01/21	DESCRIPTION:	 FY 2022-23 STANDARD PLANS	CONCRETE POLES	INDEX 641-010	SHEET 5 of 10
---------------------------	--------------	--	-----------------------	-------------------------	-------------------------

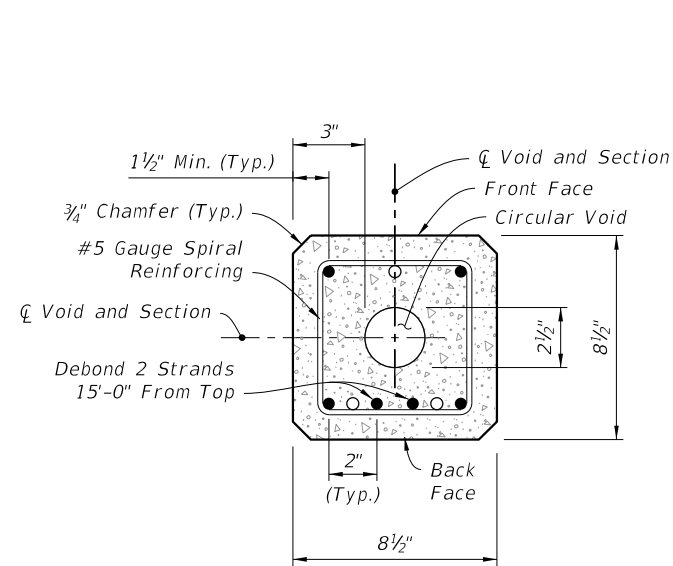
POLE TYPE P-III



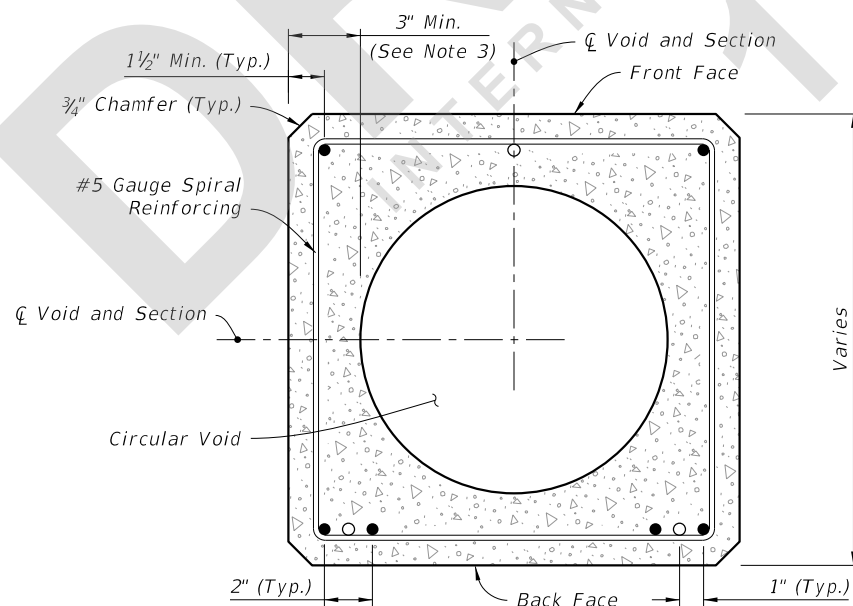
SPIRAL REINFORCING ELEVATION
(Strands, Holes and Fixtures Not Shown)



POLE ELEVATION
(Strands and Reinforcing Not Shown)



SECTION I-I (Tip End)



SECTION J-J (Typical Square Section)

NOTES:

1. Provide a minimum 3" concrete plug at the Tip End.
2. For final erection, tilt pole upright with single point attachment located a distance of 20% L from the Tip End.
3. Dimension may vary from 3" to 4 1/4" to accommodate smaller radius of optional stepped (PVC) void. The minimum void diameter is 2 1/2".
4. Strands shown are continuous from Tip End to Butt End.
5. Strands are not shown in the elevation views for clarity.

LEGEND:

- Prestressed Strand:
0.5 in. ~ 31 kips before transfer (6 strands total)
- Dormant Strand:
0.5 in. (3 strands total) One 24" splice allowed per strand

7/23/2021 4:55:55 PM

LAST REVISION 11/01/21	DESCRIPTION:
---------------------------	--------------



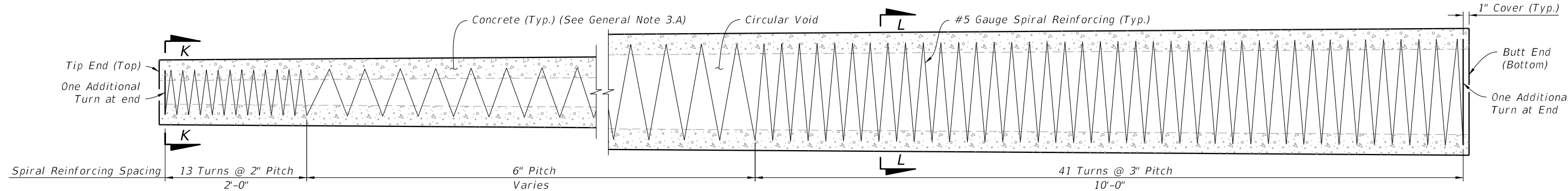
FY 2022-23
STANDARD PLANS

CONCRETE POLES

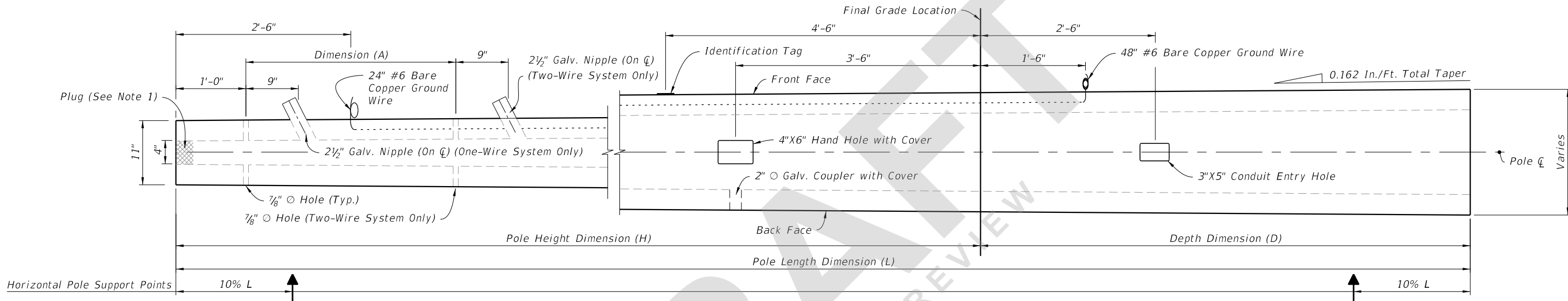
STRAIN POLE TYPE P-IV

INDEX
641-010

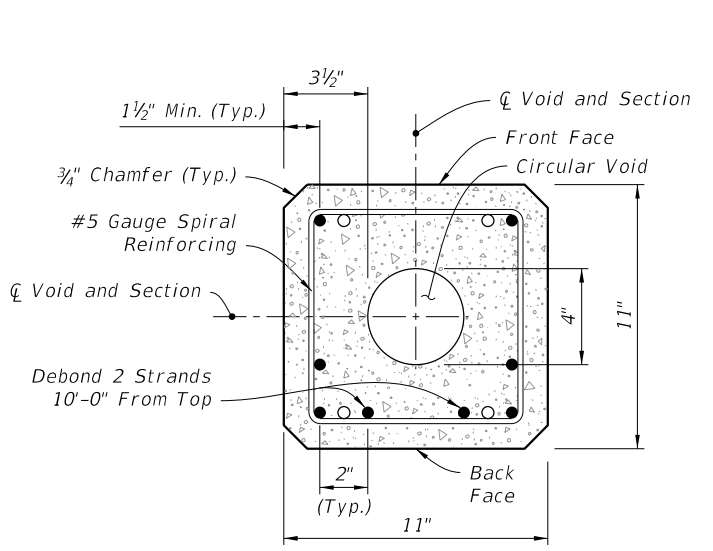
SHEET
6 of 10



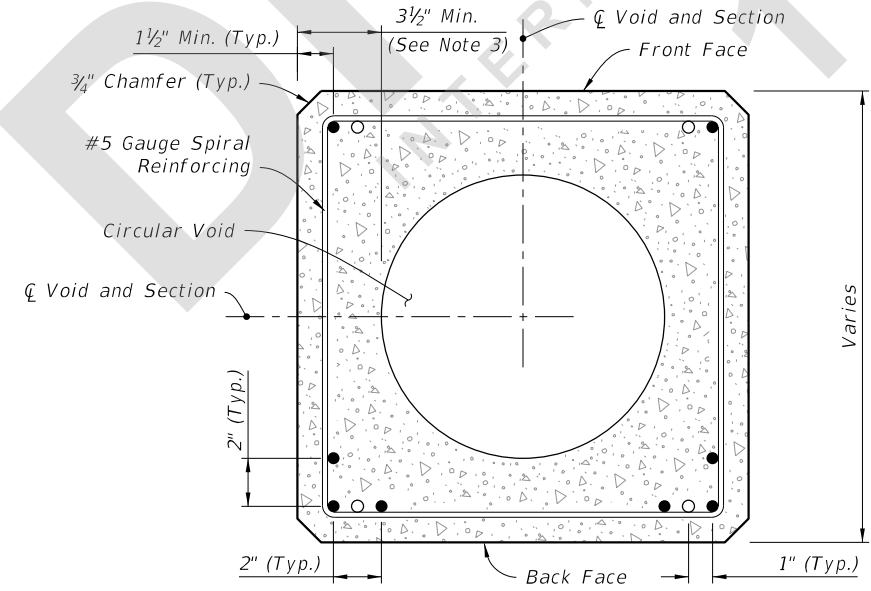
SPIRAL REINFORCING ELEVATION
(Strands, Holes, and Fixtures Not Shown)



POLE ELEVATION
(Strands and Reinforcing Not Shown)



SECTION K-K (Tip End)



SECTION L-L (Typical Square Section)

NOTES:

1. Provide a minimum 3" concrete plug at the Tip End.
2. For final erection, tilt pole upright with single point attachment located a distance of 12.5% L from the Tip End.
3. Dimension may vary from 3 1/2" to 4 3/4" to accommodate smaller radius of optional stepped (PVC) void. The minimum void diameter is 4".
4. Strands shown are continuous from Tip End to Butt End.
5. Strands are not shown in the elevation views for clarity.

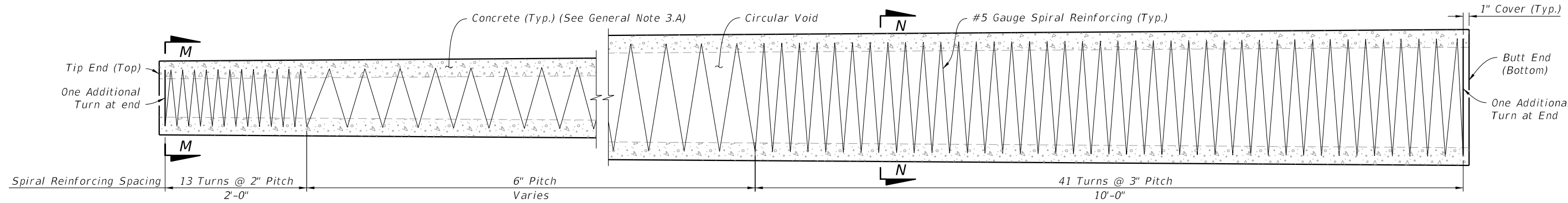
LEGEND:

- Prestressed Strand:
0.5 in. ~ 31 kips before transfer (8 strands total)
- Dormant Strand:
0.5 in. (4 strands total) One 24" splice allowed per strand

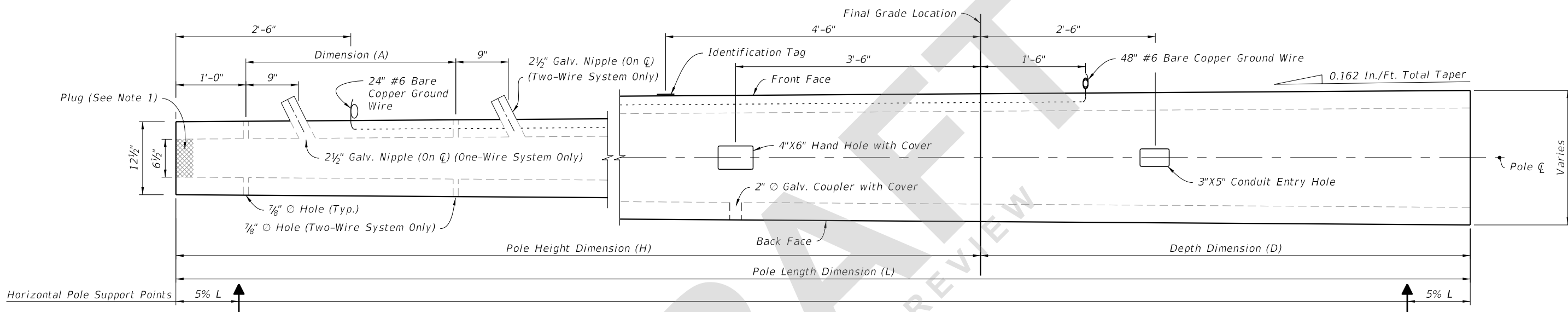
7/23/2021 4:56:02 PM

LAST REVISION 11/01/21	DESCRIPTION:	 FY 2022-23 STANDARD PLANS	CONCRETE POLES	INDEX 641-010	SHEET 7 of 10
---------------------------	--------------	--	----------------	------------------	------------------

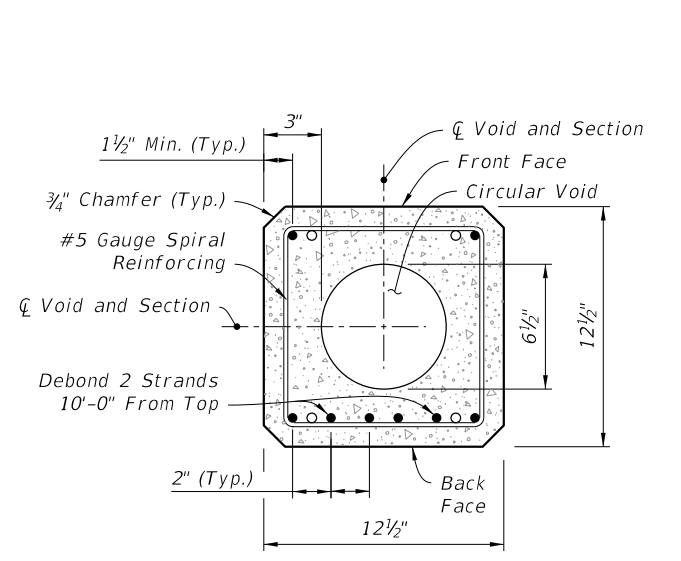
STRAIN POLE TYPE P-V



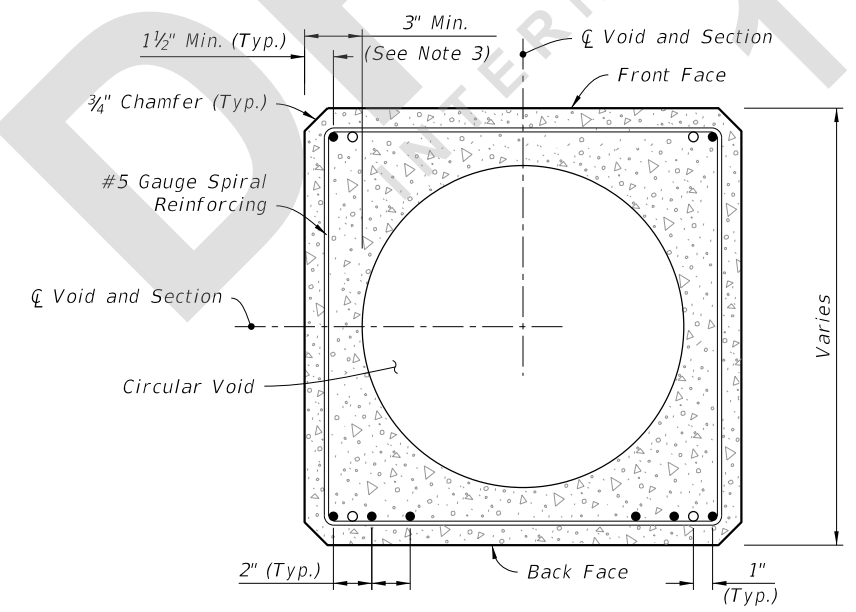
SPIRAL REINFORCING ELEVATION
(Strands, Holes, and Fixtures Not Shown)



POLE ELEVATION
(Strands And Reinforcing Not Shown)



SECTION M-M (Tip End)



SECTION N-N (Typical Square Section)

NOTES:

1. Provide a minimum 3" concrete plug at the Tip End.
2. For final erection, tilt pole upright with single point attachment located a distance of 10% L from the Tip End.
3. Dimension may vary from 3" to 4 1/4" to accommodate smaller radius of optional stepped (PVC) void. The minimum void diameter is 6 1/2".
4. Strands shown are continuous from Tip End to Butt End.
5. Strands are not shown in the elevation views for clarity.

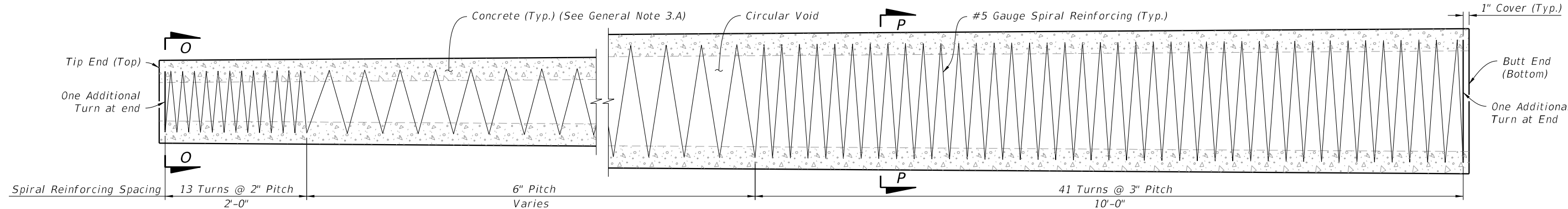
LEGEND:

- Prestressed Strand:
0.5 in. ~ 31 kips before transfer (8 strands total)
- Dormant Strand:
0.5 in. (4 strands total) One 24" splice allowed per strand

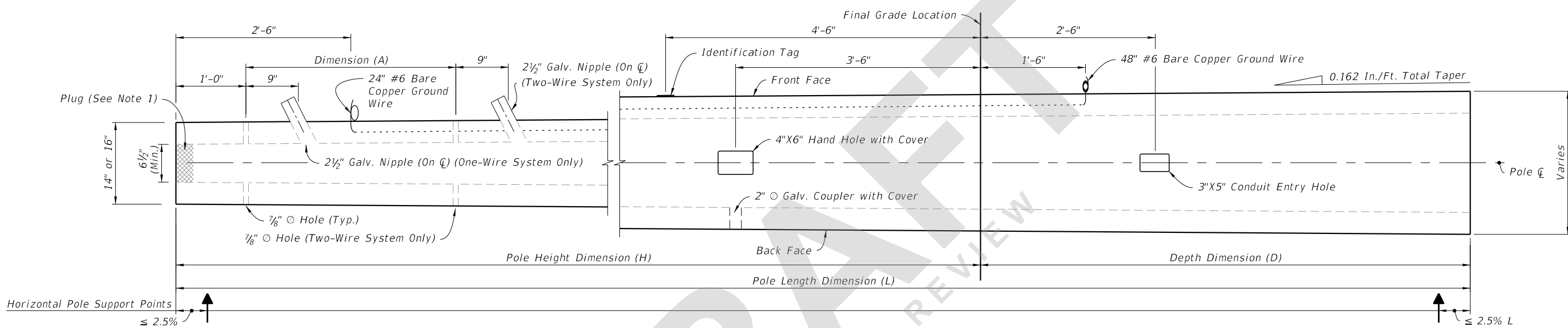
STRAIN POLE TYPE P-VI

7/23/2021 4:56:07 PM

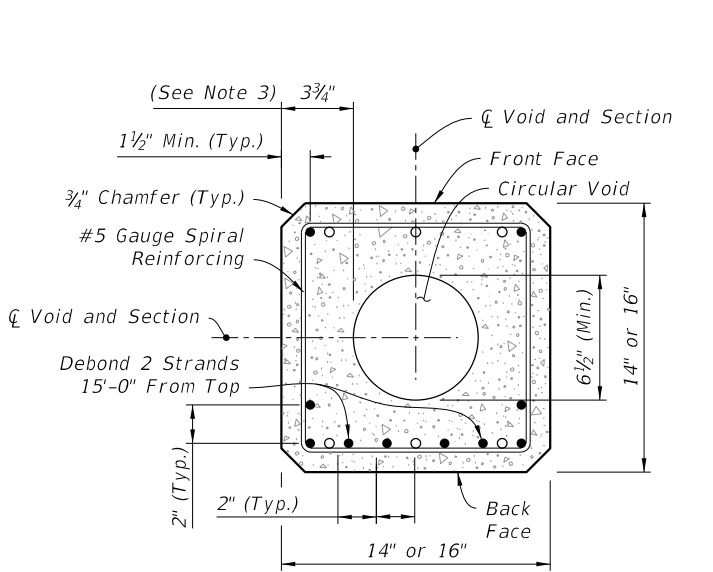
LAST REVISION 11/01/21	REVISION	DESCRIPTION:	 FY 2022-23 STANDARD PLANS	CONCRETE POLES	INDEX 641-010	SHEET 8 of 10
---------------------------	----------	--------------	--	----------------	------------------	------------------



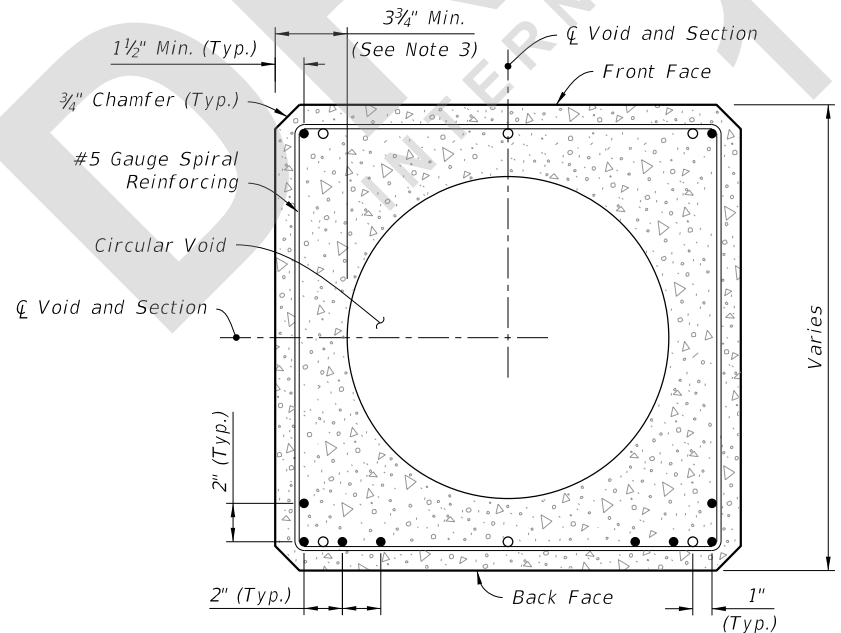
SPIRAL REINFORCING ELEVATION
(Strands, Holes, and Fixtures Not Shown)



POLE ELEVATION
(Strands And Reinforcing Not Shown)



SECTION O-O (Tip End)



SECTION P-P (Typical Square Section)

NOTES:

1. Provide a minimum 3" concrete plug at the Tip End.
2. For final erection, tilt pole upright with single point attachment located a distance of 10% L from the Tip End.
3. Dimension may vary from 3 3/4" to 5" to accommodate smaller radius of optional stepped (PVC) void. The minimum void diameter is 6 1/2".
4. Strands shown are continuous from Tip End to Butt End.
5. Strands are not shown in the elevation views for clarity.

LEGEND:

- Prestressed Strand:
0.5 in. ~ 31 kips before transfer (10 strands total)
- Dormant Strand:
0.5 in. (6 strands total) One 24" splice allowed per strand

STRAIN POLE TYPE P-VII

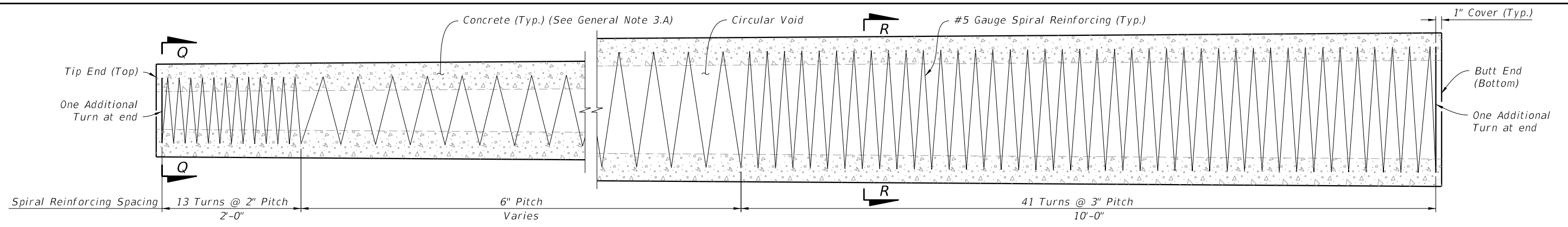
7/23/2021 4:56:11 PM

LAST REVISION	DESCRIPTION:
11/01/21	

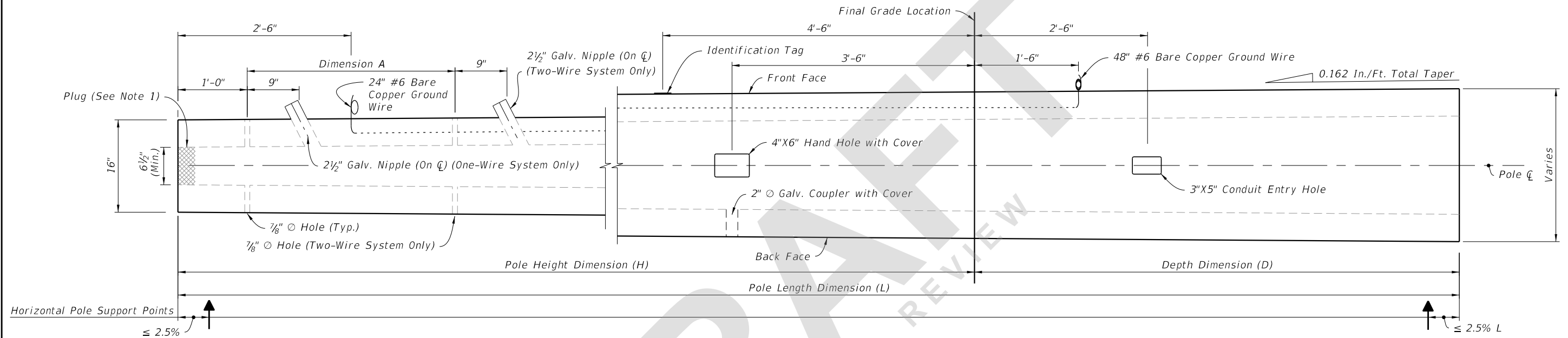

**FY 2022-23
STANDARD PLANS**

CONCRETE POLES

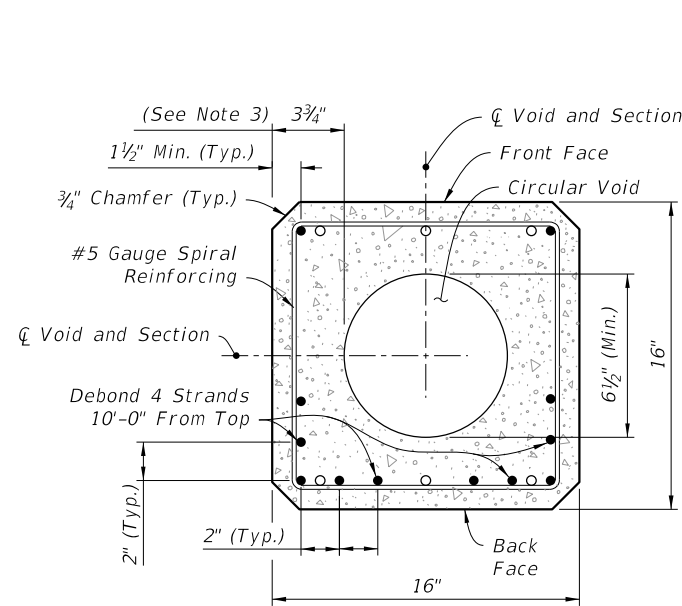
INDEX	SHEET
641-010	9 of 10



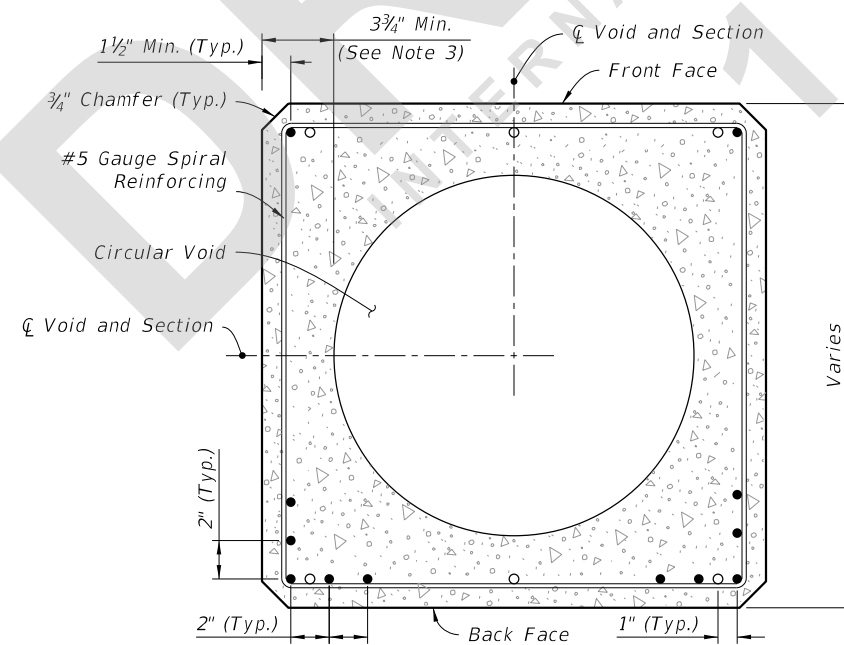
SPIRAL REINFORCING ELEVATION
(Strands, Holes, and Fixtures Not Shown)



POLE ELEVATION
(Strands And Reinforcing Not Shown)



SECTION Q-Q (Tip End)



SECTION R-R (Typical Square Section)

NOTES:

1. Provide a minimum 3" concrete plug at the Tip End.
2. For final erection, tilt pole upright with single point attachment located a distance of 10% L from the Tip End.
3. Dimension may vary from 3 3/4" to 5" to accommodate smaller radius of optional stepped (PVC) void. The minimum void diameter is 6 1/2".
4. Strands shown are continuous from Tip End to Butt End.
5. Strands are not shown in the elevation views for clarity.

LEGEND:

- Prestressed Strand:
0.5 in. ~ 31 kips before transfer (12 strands total)
- Dormant Strand:
0.5 in. (6 strands total) One 24" splice allowed per strand

STRAIN POLE TYPE P-VIII

7/23/2021 4:56:17 PM

LAST REVISION	DESCRIPTION:
11/01/21	



FY 2022-23
STANDARD PLANS

CONCRETE POLES

INDEX	SHEET
641-010	10 of 10