

---

## Index 102-660 Sidewalk Closure

### ORIGINATION

**Date:** 6-8-2021

**Name:** James McGinnis

**Phone:** 850 414-4952

**Email:** James.McGinnis@dot.state.fl.us

### COMMENTARY

The duration provisions of the index are intended to apply to the length time needed to perform the specific temporary traffic control work “operation” shown, which is independent of the duration of an overall construction project. The term “Work Zone” is being replaced with “Work Operation” to clarify the intent.

### COMMENTS AND RESPONSES

**BLACK** = Internal Review Comments   **RED** = Standard Plans Response   **GREEN** = Change Made to Index

**Name:** Max Milovidov

**Date:** 8-13-21

**COMMENT:**

Index 102-660, Sheet 2 of 2: Note #2 – correct minimum width of 4” to 4’. (4 inches correct to 4 feet)

**RESPONSE: Agreed.**




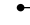

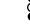
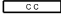

**Change made to Index:** The minimum width will be updated.

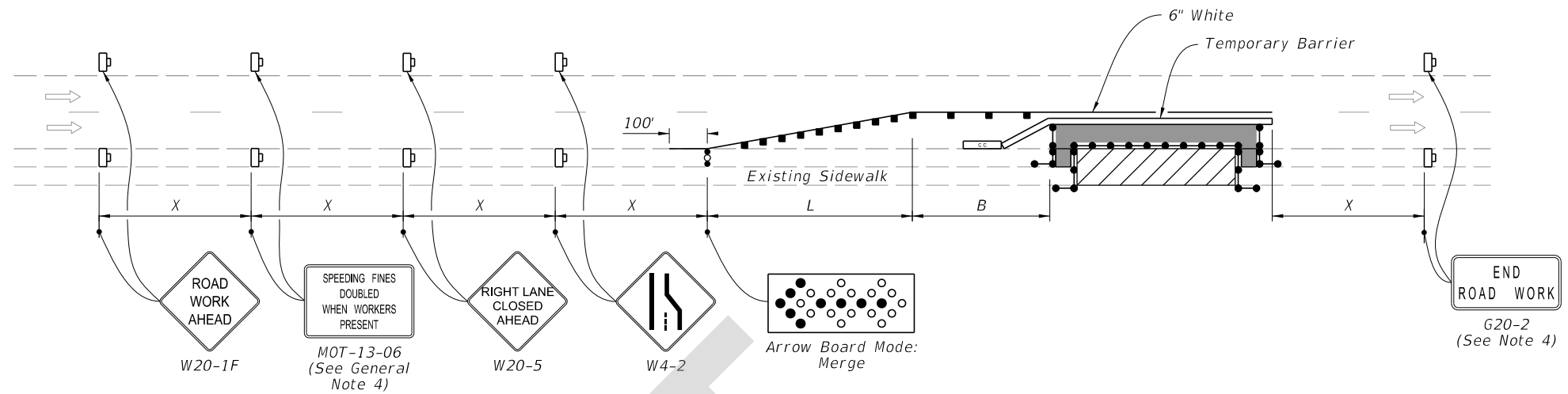
**Date:** 8-16-2021

**NOTES:**

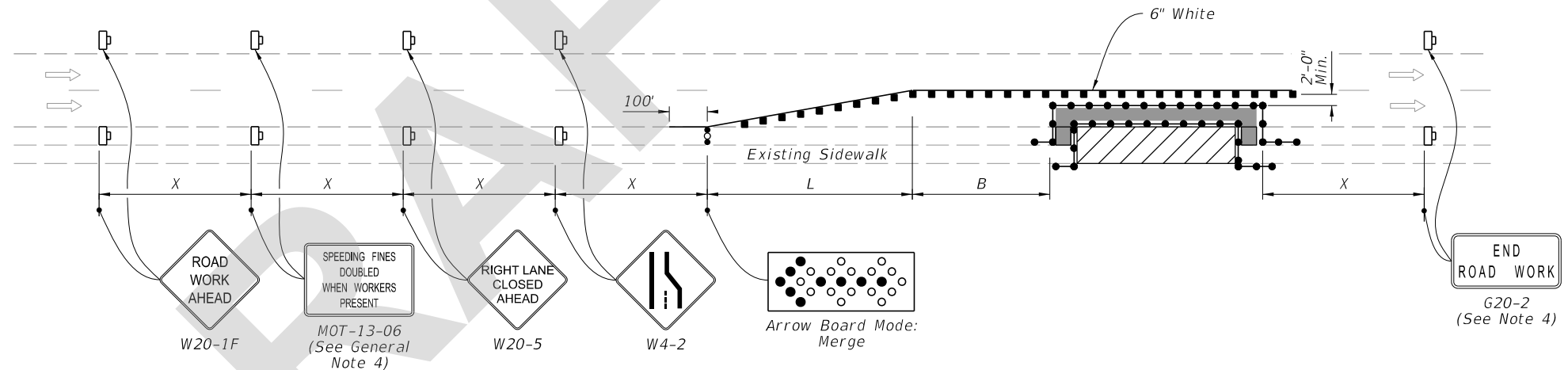
1. L = Taper Length  
B = Buffer Length  
X = Work Zone Sign Distance  
See Index 102-600 for "L", "B", "X", channelizing device spacing values.
2. Provide a 5' wide temporary pedestrian way with a maximum cross-slope of 0.02, except where space restrictions warrant a minimum width of 4'. Provide a 5' x 5' passing space for temporary pedestrian ways less than 5' in width at intervals not to exceed 200'.
3. When temporary pedestrian ways require curb ramps, meet the requirements of Index 522-002. Detectable warnings are not required for curb ramps diverting pedestrian traffic into a closed lane.
4. The "Speeding Fines Doubled When Workers Present" signs (MOT-13-06) and "End Road Work" signs (G20-2), along with associated work zone sign distances, may be omitted when the work operation will be in place for 24 hours or less.
5. Pedestrian Diversion may only be used when called for in the Plans or as approved by an Engineer.

**SYMBOLS:**

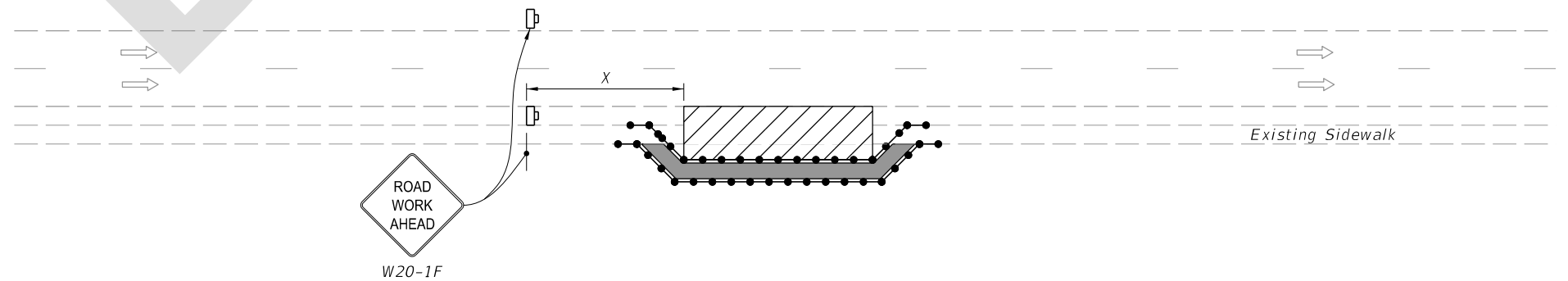
-  Work Area
-  Temporary Pedestrian Way
-  Channelizing Device (See Index 102-600)
-  Pedestrian Longitudinal Channelizing Device (LCD)
-  Work Zone Sign
-  Arrow Board
-  Crash Cushion
-  Lane Identification and Direction of Traffic



**PEDESTRIAN DIVERSION**  
(Temporary Barrier Shown, Low Profile Barrier Similar)




**PEDESTRIAN DIVERSION**  
(Work Zone Speed 35 mph or Less)



**PEDESTRIAN SPECIAL DETOUR**

8/24/2021 1:03:42 PM

LAST REVISION 11/01/21	REVISION	DESCRIPTION:	 <b>FY 2022-23</b> <b>STANDARD PLANS</b>	<b>SIDEWALK CLOSURE</b>	INDEX <b>102-660</b>	SHEET <b>2 of 2</b>
---------------------------	----------	--------------	---	-------------------------	-------------------------	------------------------