
Index 102-615 Multilane Roadway, Intersection Work

ORIGINATION

Date: 6/15/21

Name: James McGinnis

Phone: (850) 414-4952

Email: james.mcginis@dot.state.fl.us

COMMENTARY

Sheet 1: Changed Note 5 - "work zone" to "work operation";
Deleted Note 8.
Added Arrow Board Mode: "Merge" to the detail.

Sheet 4: Moved buffer zone and the associated dimension "B" before the Truck Mounted
Attenuator in the work zone.

COMMENTS AND RESPONSES

BLACK = Industry Review Comments **RED** = Standard Plans Response **GREEN** = Change Made to Index

Name: Anonymous

Date: 8/31/2021

COMMENT: Is the 4-ft paved shoulder provision intended to apply to all roadway types (i.e., limited access facilities vs. Arterials/Collectors)?

RESPONSE: No, only 4' or wider paved shoulder on non-limited access facilities are considered "Bicycle Facilities".

Change Made: Instead of revising the Note further, it has been decided to remove the redundant note from all relevant 102 Series Indexes. The FDM provides guidance on bicycle accommodations and Specification 102-3.4 will be updated to clarify the definition of a "Bicycle Facility" (i.e., existing marked Bicycle Lane or a 4' or greater paved shoulder on non-limited access roadways). **Note Deleted.**

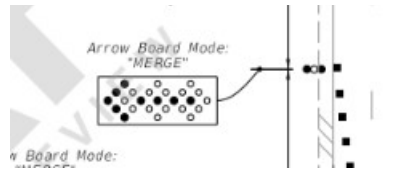
Date: 8/31/2021

Name: Jose Kandarappallil

Date: 8/31/2021

COMMENT:

1. Draft page 1/5: Please verify the merge arrow shown on Arrow Board for the closure of the outside lane. The Merge arrow is now shown directed to the shoulder; correction may be necessary. Screen shot-



RESPONSE: All of the Signs and Arrow Boards throughout the 102 Series are orientated in the details to the perspective of a user standing in the field looking in the direction of traffic (i.e., a left merge is shown with left pointing arrow). If the arrow boards were to be shown oriented with the page, then all of the signs for opposing traffic directions would need to be shown upside down, which is not preferred.

No Change Made

2. Draft page 4/5:- Consider to place an Advance warning Arrow Board (Move/ Merge Rt or Lt) placed ahead of Truck mounted Attenuator(TMA) when work is performed in the center lane.

RESPONSE: Agree that an Arrow Board should be in use; however, we believe that boards mounted on a Shadow Vehicle are appropriate.


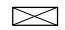

Change Made: Add Arrow Board "Mode" call-out to the Shadow Vehicle.

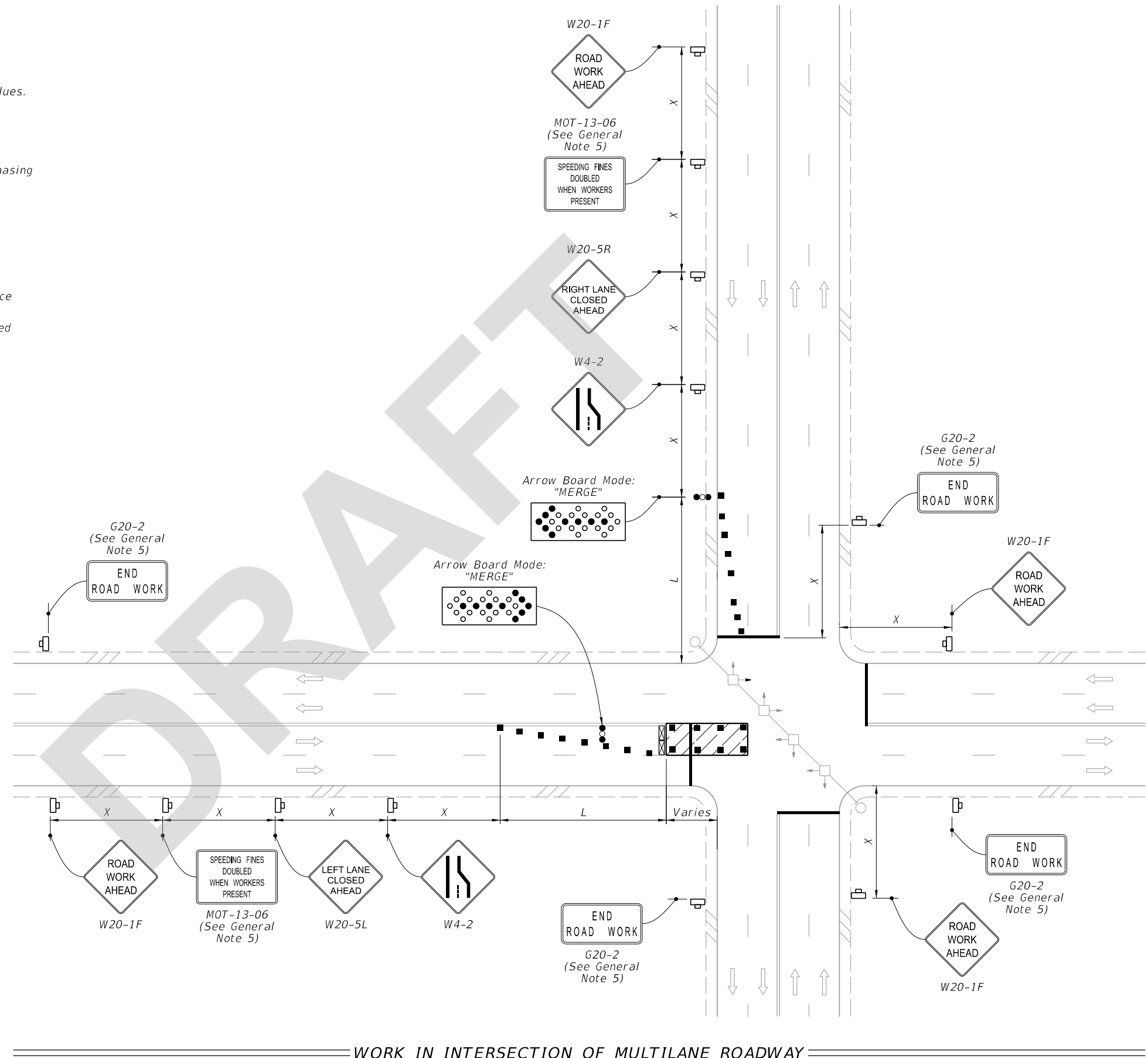
Date: 8/31/2021

GENERAL NOTES:

1. L = Taper Length
B = Buffer Length
X = Work Zone Sign Distance
See Index 102-600 for "L", "B", "X", and channelizing device spacing values.
2. If vehicles in a parking zone block the line of sight to TCZ signs, locate and post mount signs in accordance with Index 700-101.
3. District Traffic Operations Engineer must approve temporary signal phasing modifications prior to beginning of work.
4. Use temporary "STOP" sign (R1-1) where the existing stop bar is more than 30' from the taper, remove or cover existing sign.
5. The "Speeding Fines Doubled When Workers Present" sign (MOT-13-06) and "End Road Work" Sign (G20-2), along with associated Work Zone Sign Distances, may be omitted when the work operation will be in place for 24 hours or less. Additionally, arrow boards may be omitted when the work operation will be in place for 60 minutes or less and the speed limit is 45 mph or less.
6. If the work area extends across a crosswalk, close the crosswalk in accordance with Index 102-660.
7. Dual signs are required for divided roadways.


SYMBOLS:

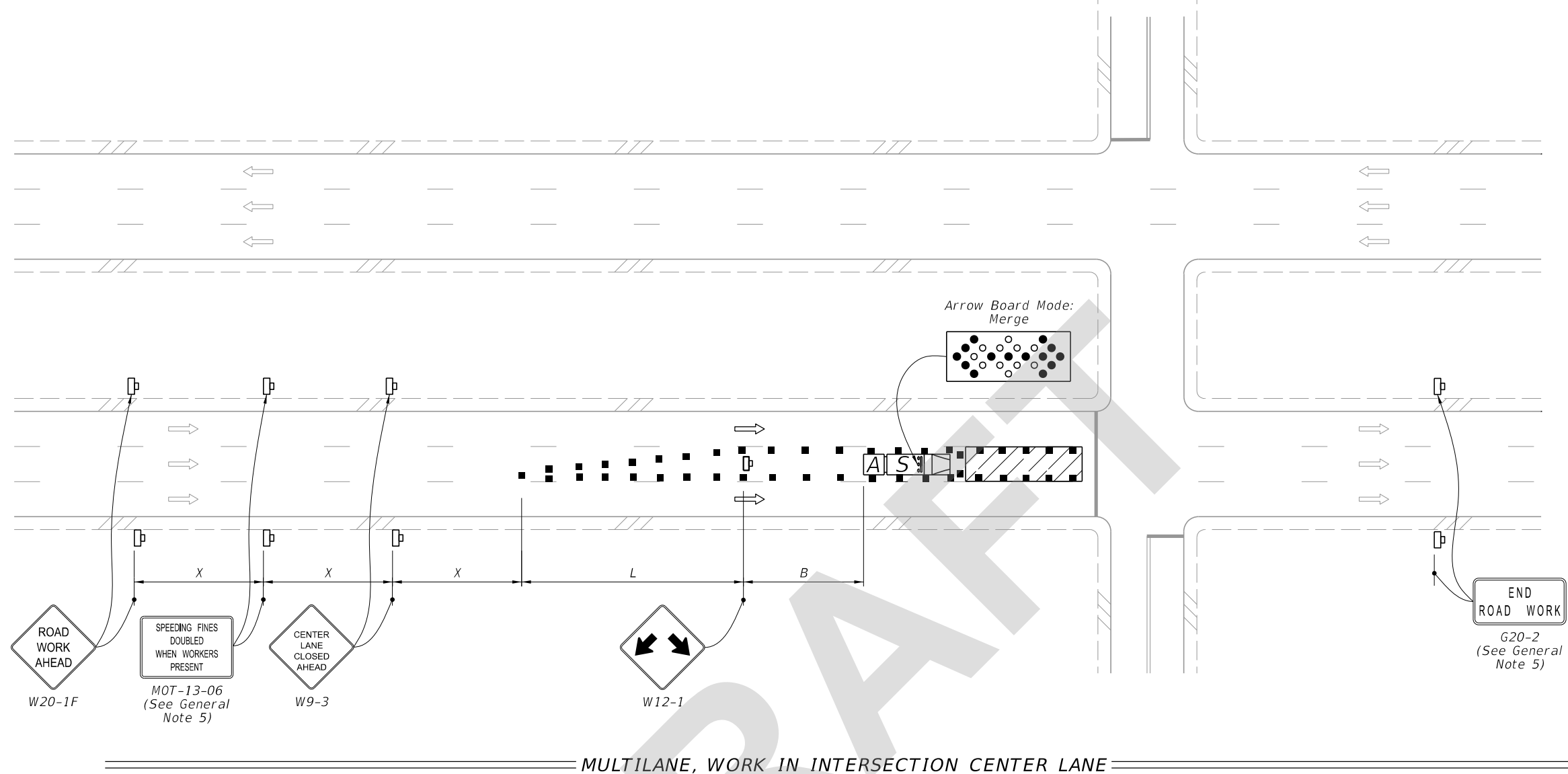
-  Work Area
-  Channelizing Device (See Index 102-600)
-  Work Zone Sign
-  Type III Barricade
-  Arrow Board
-  Stop Bar
-  Lane Identification and Direction of Traffic



WORK IN INTERSECTION OF MULTILANE ROADWAY

9/1/2021 7:42:29 AM

LAST REVISION 11/01/21	REVISION	DESCRIPTION:	 FY 2022-23 STANDARD PLANS	MULTILANE ROADWAY, INTERSECTION WORK	INDEX 102-615	SHEET 1 of 5
---------------------------	----------	--------------	---	--------------------------------------	------------------	-----------------



MULTILANE, WORK IN INTERSECTION CENTER LANE

NOTES:

1. Confine work operations to one center travel lane and leave the adjacent travel lanes open to traffic.
2. Ensure that the merging taper only directs vehicular traffic into either the right or left lane.

SYMBOLS:

- Work Area
- Channelizing Device (See Index 102-600)
- Work Zone Sign
- Type III Barricade
- Arrow Board
- Stop Bar
- Shadow (S) Vehicle With Warning Lights And Arrow Board
- Truck/Trailer Mounted Attenuator (TMA)
- Lane Identification and Direction of Traffic

9/1/2021 1:11:04 PM

LAST REVISION 11/01/21	REVISION	DESCRIPTION:		FY 2022-23 STANDARD PLANS	MULTILANE ROADWAY, INTERSECTION WORK	INDEX 102-615	SHEET 4 of 5
---------------------------	----------	--------------	--	------------------------------	--------------------------------------	------------------	-----------------