
Index 102-613 Multilane Roadway, Lane Closure

ORIGINATION

Date: 6/15/21

Name: James McGinnis

Phone: (850) 414-4952

Email: james.mcginis@dot.state.fl.us

COMMENTARY

Sheet 1: Changed Note 5 and 7 - "work zone" to "work operation";
Deleted Note 8.

Sheet 5: Added MAS usage note back from 2018-2019 Standard Plans.

COMMENTS AND RESPONSES

BLACK = Industry Review Comments **RED** = Standard Plans Response **GREEN** = Change Made to Index

Name: Anonymous

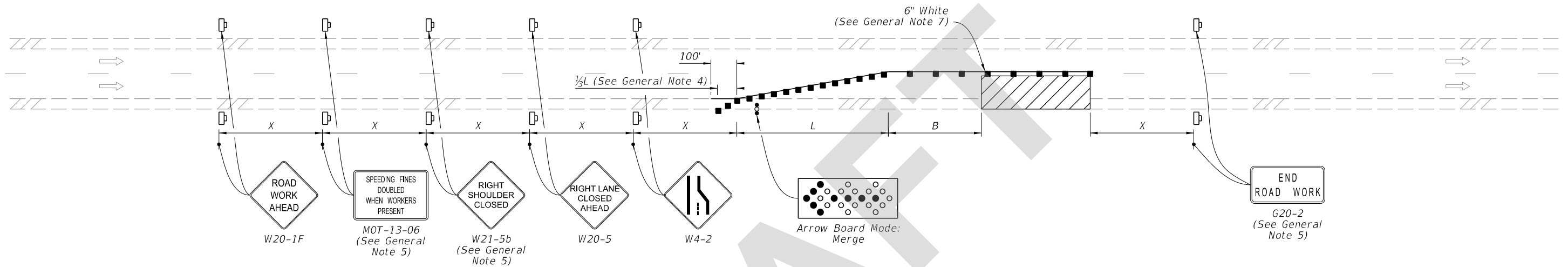
Date: 8/31/2021

COMMENT: Is the 4-ft paved shoulder provision intended to apply to all roadway types (i.e., limited access facilities vs. Arterials/Collectors)?

RESPONSE: No, only 4' or wider paved shoulder on non-limited access facilities are considered "Bicycle Facilities".






Change Made: Instead of revising the Note further, it has been decided to remove the redundant note from all relevant 102 Series Indexes. The FDM provides guidance on bicycle accommodations and Specification 102-3.4 will be updated to clarify the definition of a "Bicycle Facility" (i.e., existing marked Bicycle Lane or a 4' or greater paved shoulder on non-limited access roadways). **Note Deleted.**

Date: 8/31/2021



SINGLE LANE CLOSURE

SYMBOLS:

-  Work Area
-  Channelizing Device (See Index 102-600)
-  Work Zone Sign
-  Arrow Board
-  Lane Identification and Direction of Traffic

GENERAL NOTE:

1. L = Taper Length
 B = Buffer Length
 X = Work Zone Sign Distance
 See Index 102-600 for " L ", " B ", " X ", and channelizing device spacing values.
2. On undivided highways the median signs as shown are to be omitted.
3. On limited access facilities, omit "Shoulder Closed Ahead" signs (W21-5b) and associated work zone sign spacing distances.
4. If the paved shoulder is less than 4' in width, omit the taper and channelizing devices from the paved shoulder.
5. The "Speeding Fines Doubled When Workers Present" signs (MOT-13-06) and "End Road Work" signs (G20-2) and "Shoulder Closed Ahead" (W21-5b), along with associated work zone sign distances, may be omitted when the work operation will be in place for 24 hours or less. For Single Lane Closures, arrow boards and buffer (B) may also be omitted when the work operation will be in place for 60 minutes or less and the speed limit is 45 mph or less.
6. Use inverted plan of the illustrations for work on left side of roadways.
7. Temporary pavement markings may be omitted when the work operation is in place for 3 days or less.

9/1/2021 7:42:01 AM

LAST REVISION 11/01/21	REVISION	DESCRIPTION:	 FY 2022-23 STANDARD PLANS	MULTILANE ROADWAY, LANE CLOSURES	INDEX 102-613	SHEET 1 of 5
---------------------------	----------	--------------	---	---	-------------------------	------------------------