
Index 715-001 Conventional Lighting

ORIGINATION

Date: 7-20-20

Name: Richard Stepp

Phone: 850 414-4313

Email: Richard.Stepp@dot.state.fl.us

COMMENTARY

Sheet 1: Updated Note 1 for Concrete Barrier and bridge mount. Provided additional wiring detail, a reference to 715-002, and new information of where breakaway fuse holders fit inside of pole.

Added callout and new Note 3 to explain that the top of the concrete foundation is flush with the finish grade elevation on the side nearest to traffic lane. Added vertical tolerance.

Added clarifications due to industry feedback.

COMMENTS AND RESPONSES

BLACK = Internal Review Comments **RED** = Standard Plans Response

Name: K.C. Jose/FDOT D4

Date: 9-11-20

COMMENT: Conventional lighting: Sheet 1 note 3 is confusing about the tolerance – Please clarify the -0 inch, + 2 inch.

RESPONSE: The vertical placement has zero negative tolerance below the nominal target, so the zero receives a negative sign. Based on feedback, this comment will be further clarified to specify that vertical refers to elevation, and the position on the foundation will be described to avoid dependence on the drawing's call-out reference.

Change made to Index: Note updated for clarity.

Date: 9-17-20

Name: Tonya Estwick/ FDOT D4

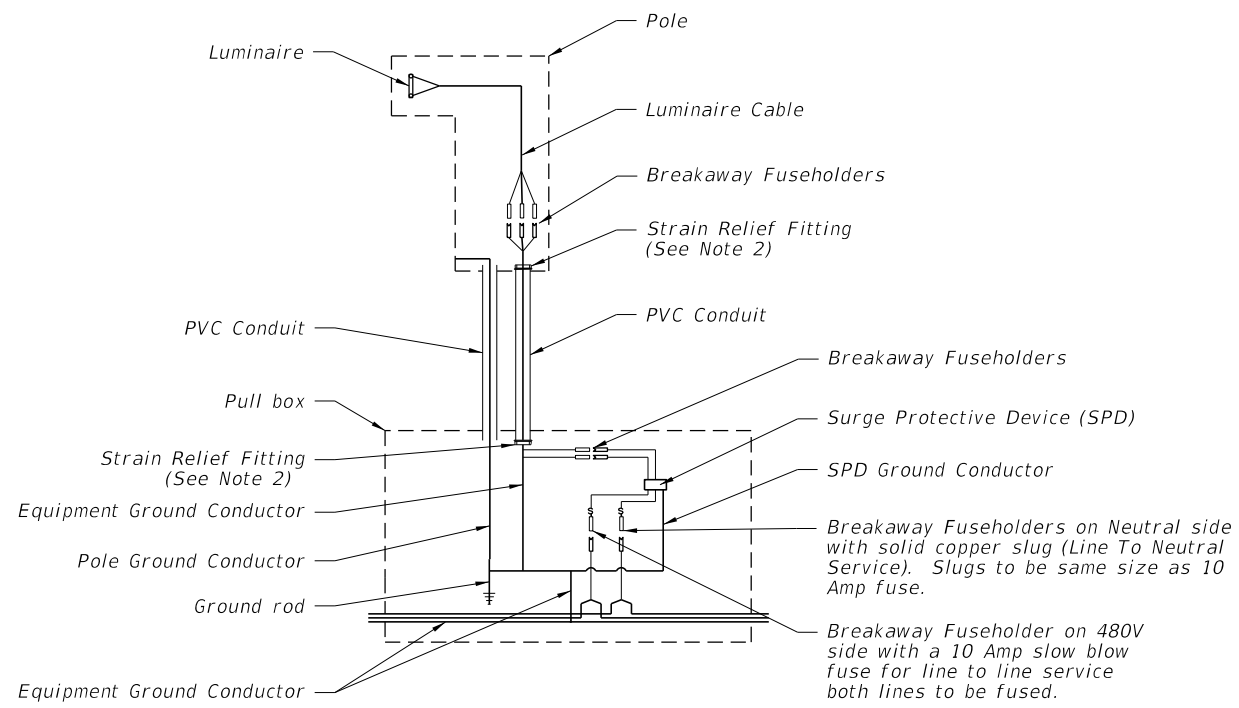
Date: 9-16-20

COMMENT: Conventional lighting: Sheet 1 note 3 is confusing about the tolerance – Please clarify the -0 inch, + 2 inch.

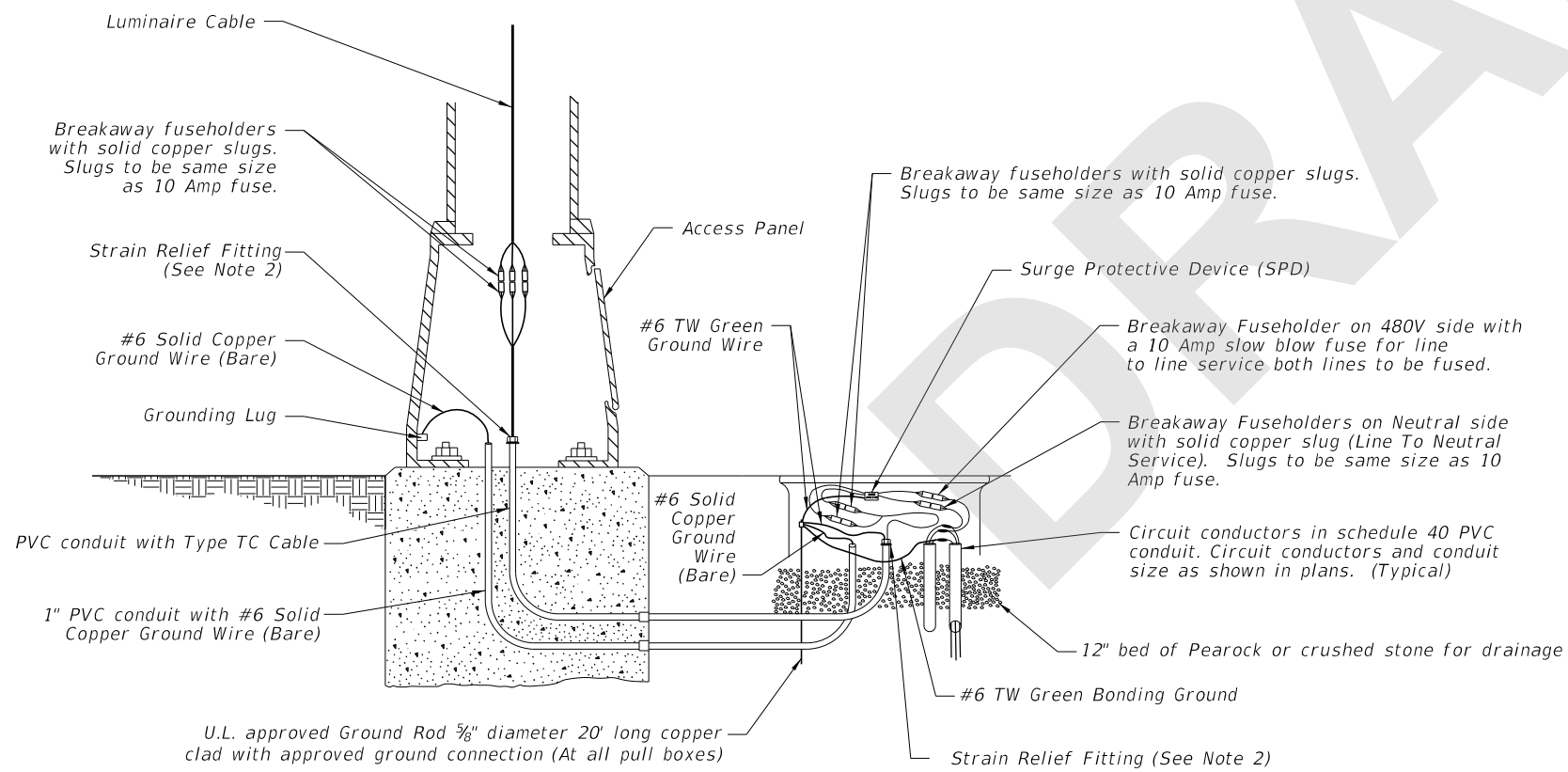
RESPONSE: The vertical placement has zero negative tolerance below the nominal target, so the zero receives a negative sign. Based on feedback, this comment will be further clarified to specify that vertical refers to elevation, and the position on the foundation will be described to avoid dependence on the drawing's call-out reference.

Change made to Index: Note updated for clarity.

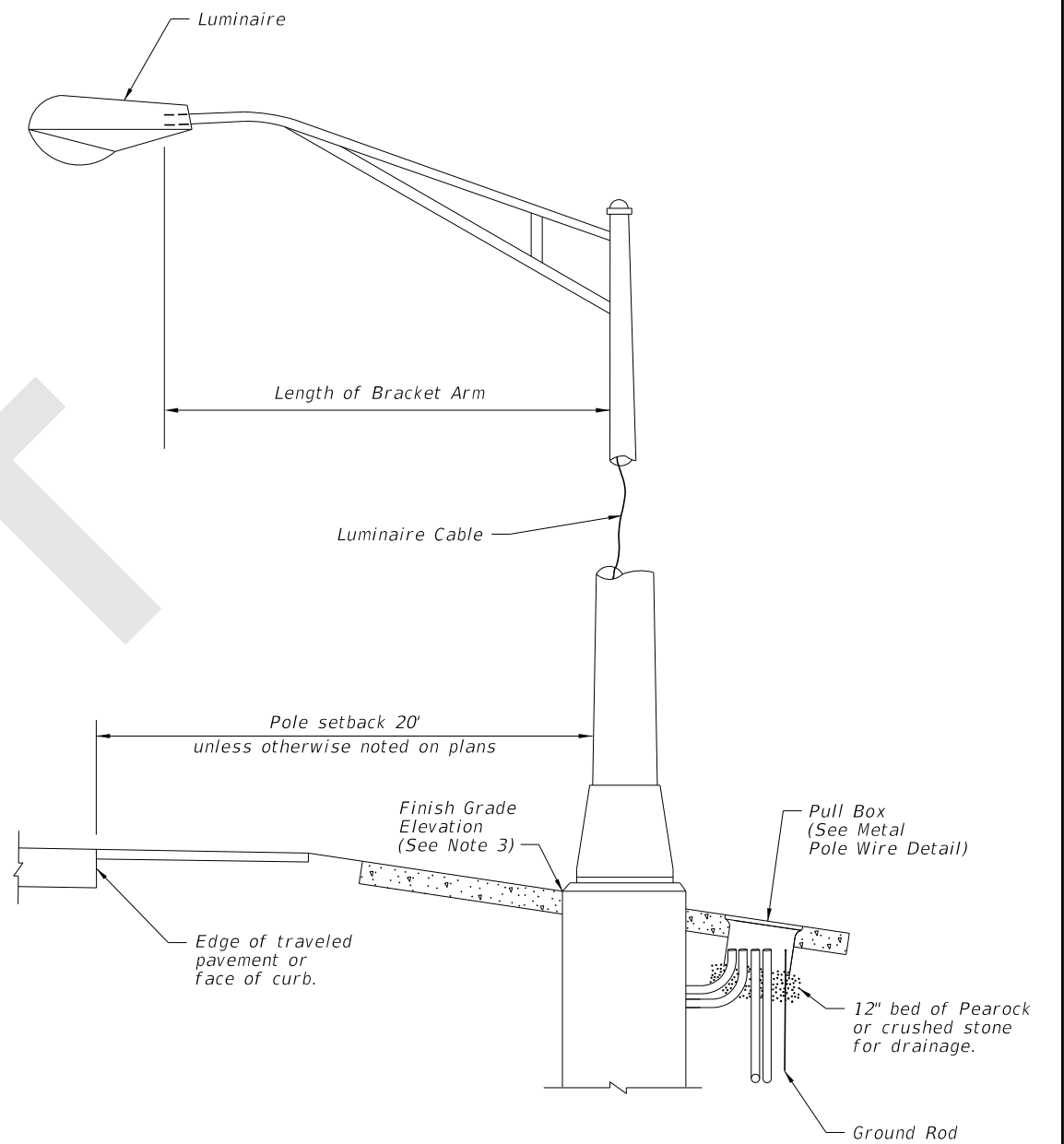
Date: 9-17-20



WIRING DIAGRAM



METAL POLE WIRING DETAIL



METAL POLE DETAIL

NOTES:

1. Concrete Barrier and Bridge Mounted Poles: Place wiring system following conduit layouts and requirements of Index 715-002. Follow additional requirements of Specification 992. For wiring and devices shown inside of pull boxes on this sheet, place inside of embedded junction boxes instead. Place the vertical breakaway fuseholders inside the pole, at the handhole location.

2. Provide enough cable length to allow for removal of fuseholders from the transformer base, pole base, or pullbox for maintenance. Remove slack from the luminaire cable to provide tension on the fuseholders in breakaway pole designs. Pull excess cable into pull box tighten strain relief fittings or cable clamps at both ends of conduit to prevent cable from slipping.

3. Align the top, outside edge of the concrete foundation with the finish grade elevation on the side nearest the traffic lane. Relative to the finish grade elevation, this foundation alignment has a vertical tolerance of plus 2 inches to minus 0 inches.

9/18/2020 7:20:57 AM

LAST REVISION 11/01/20	REVISION	DESCRIPTION:
---------------------------	----------	--------------

**FY 2021-22
STANDARD PLANS**

CONVENTIONAL LIGHTING

INDEX 715-001	SHEET 1 of 3
-------------------------	------------------------