
Index 425-041 Gutter Inlet Type V

ORIGINATION

Date: November 10, 2019

Name: Rick Jenkins

Phone: (850) 414-4334

Email: Rick.Jenkins@dot.state.fl.us

COMMENTARY

Reorganized Index, Added additional Sheet.

Sheet 1: General Notes and Overview.

Sheet 2: Dimensional and Reinforcement Details.

Sheet 3: Steel Grate Details.

Sheet 4: Alternate A structure Bottom Slab Details.

Changed Intermediate Bars for Grate to all Bearing Bars.

Deleted "INLET WITH STRUCTURE BOTTOM" Detail and referenced 425-010.

COMMENTS AND RESPONSES

BLACK = Industry Review Comments **RED** = Standard Plans Response

Name: Anonymous

Date: September 16, 2020

COMMENT:

Sheet 1: Isometric View – In the past, Gutter Inlet Type S is used for shoulder gutter. Is it Department's view that Type V is also a proper usage for shoulder gutter as illustrated in the isometric view?

RESPONSE: Valley Gutter should be shown in the isometric view on sheet 1 in the place of shoulder gutter.

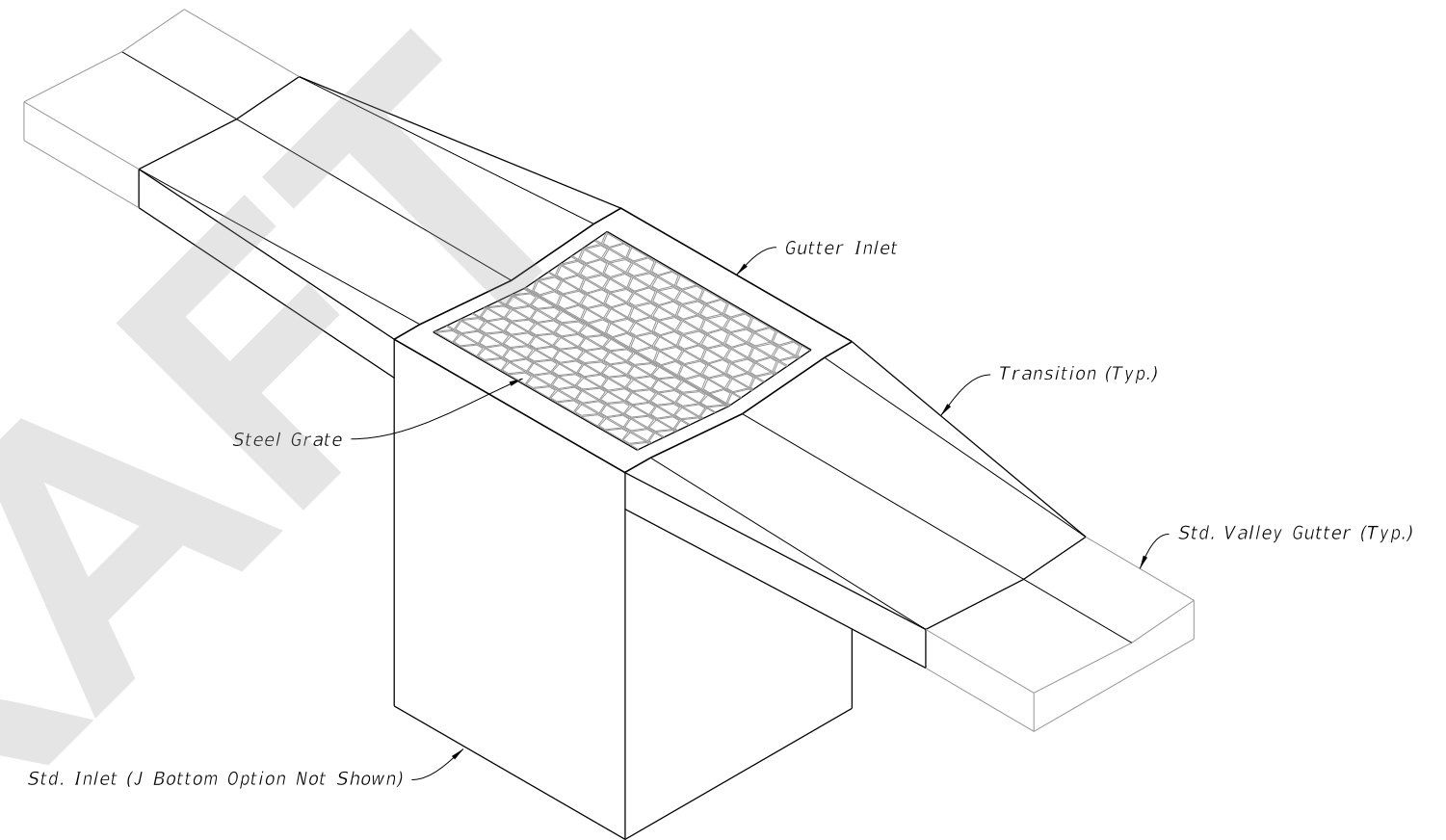
Change made to Index: Sheet 1 has been updated to show valley gutter in place of shoulder gutter.

Date: 9-17-20

GENERAL NOTES:

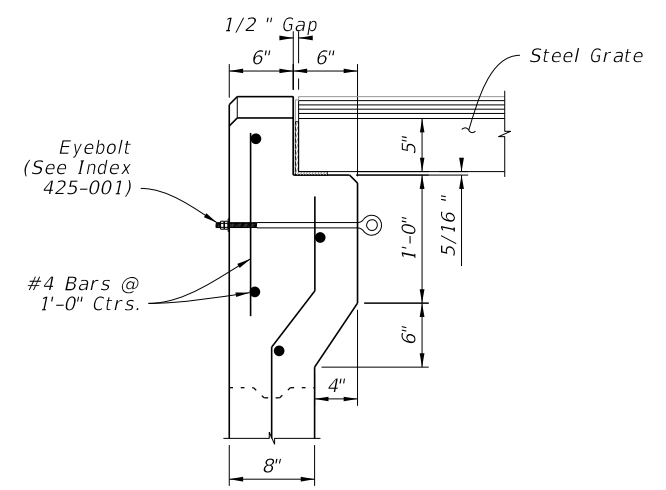
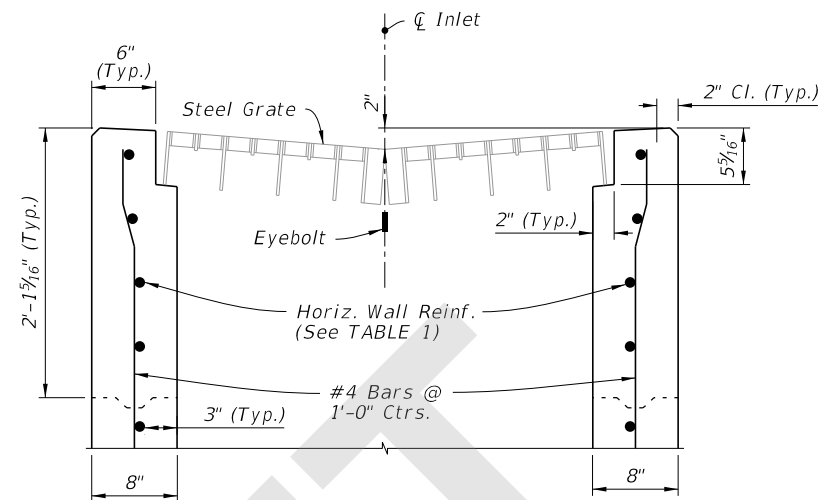
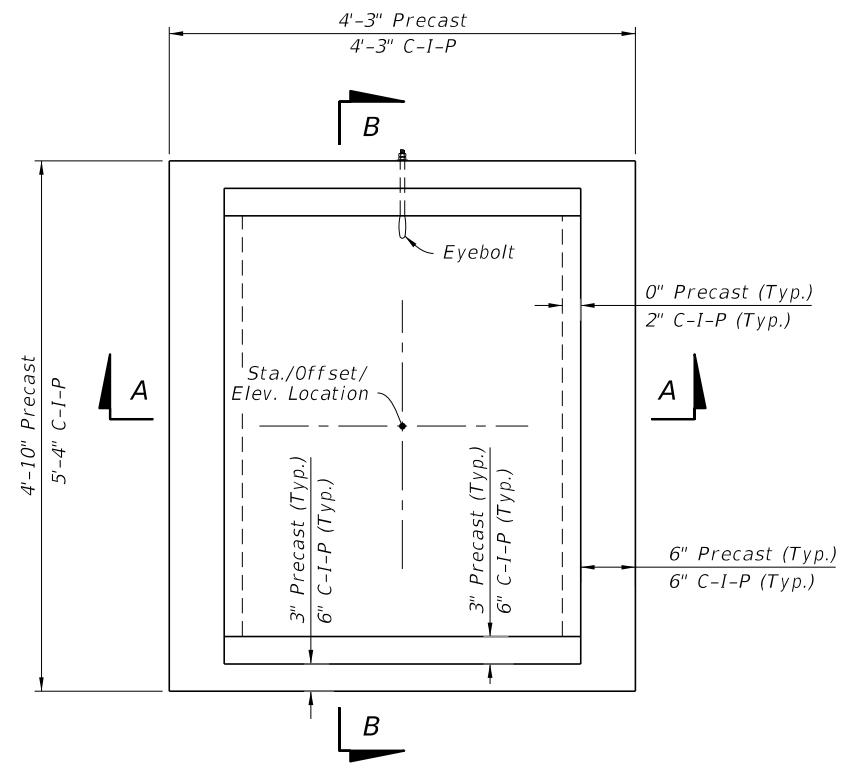
1. Work this Index with Index 425-001 and Index 425-010.
2. All reinforcing is Grade 60 bars with 2" min. cover unless otherwise noted.
See Index 425-001 for equivalent area of welded wire fabric. Cut or bend bars out of way of pipe to clear pipe 1½".
3. Chamfer all exposed edges and corners ¾" or tool to ¼" radius.
4. Dimensions are for both precast and cast-in-place inlets unless otherwise noted.

TABLE OF CONTENTS:	
Sheet	Description
1	General Notes and Contents
2	Dimensional and Reinforcement Details
3	Steel Grate Details
4	Alternate A Structure Bottom - Top Slab Details



===== GUTTER INLET TYPE V =====
(Pipe Opening Not Shown)

9/18/2020 8:48:21 AM



CAST-IN-PLACE OPTION

See DETAIL "A" For C-I-P Option

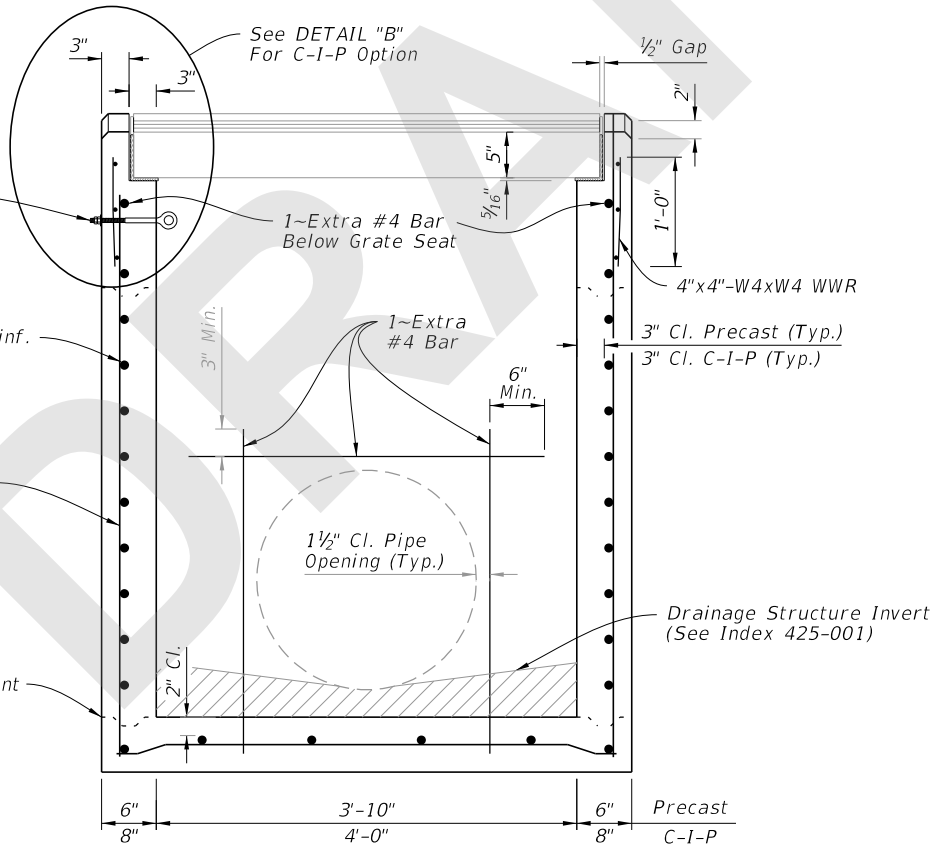
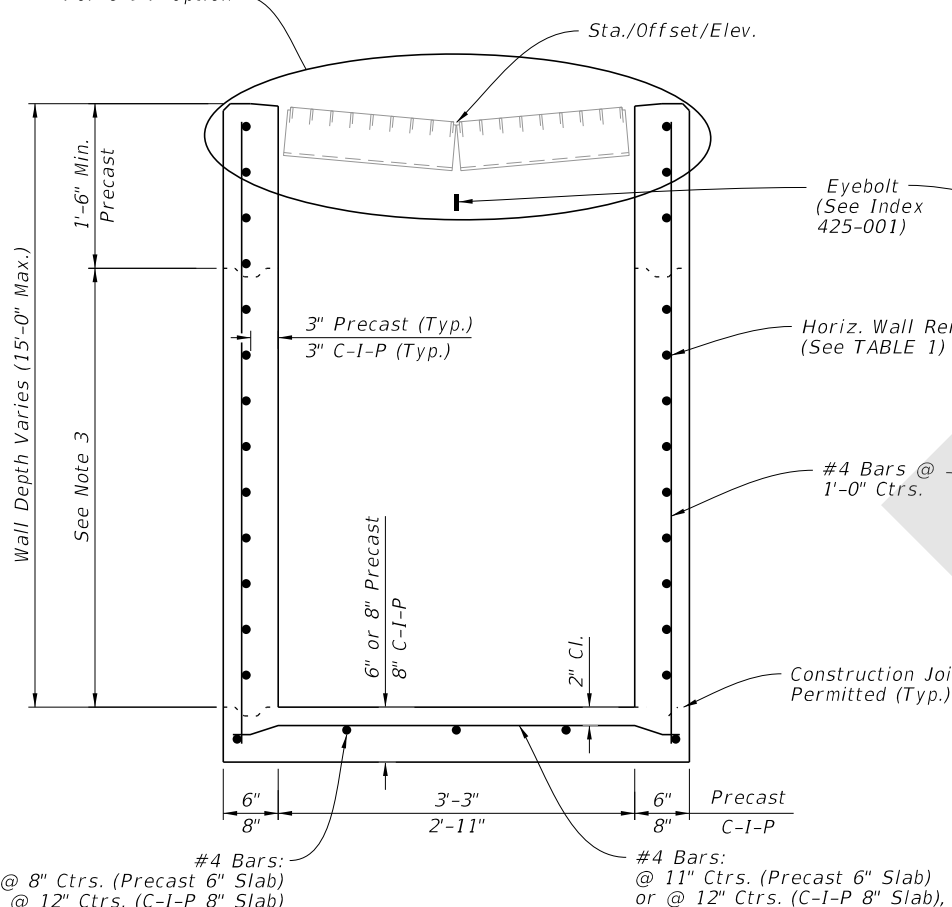


TABLE 1
HORIZONTAL WALL REINFORCING SCHEDULE

WALL DEPTH	SCHEDULE	AREA (in. ² /ft.)	MAX. SPACING	
			BARS	WWR
0' - 5'	A12	0.20	12"	8"
5' - 9'	A6	0.20	6"	5"
9' - 12'	A4	0.20	4"	3"
9' - 15'	B5.5	0.24	5 1/2"	5"

- NOTES:**
1. Plan View: Grate, Concrete Ditch Pavement, and Sod not shown on structure detail.
 2. Precast Shown, Cast-In-Place (C-I-P) similar.
 3. Construction joints permitted between these limits. See Index 425-001 for minimum dimensions.

SECTION A-A
(Pipe Opening Not Shown)

SECTION B-B
(Pipe Opening Shown)

DIMENSIONAL AND REINFORCEMENT DETAILS

DIMENSIONAL AND REINFORCEMENT DETAILS

9/18/2020 8:48:24 AM

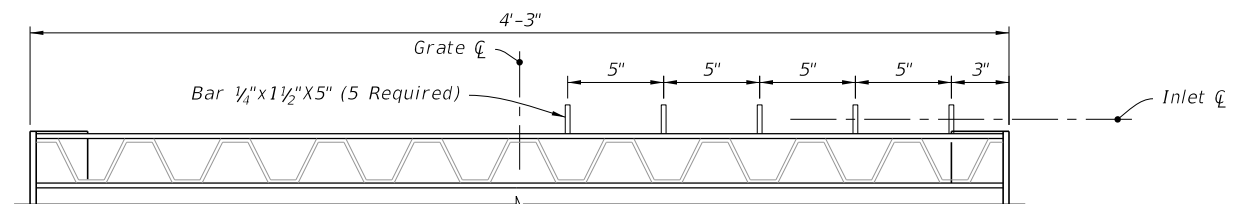
LAST REVISION 11/01/20	DESCRIPTION:
---------------------------	--------------



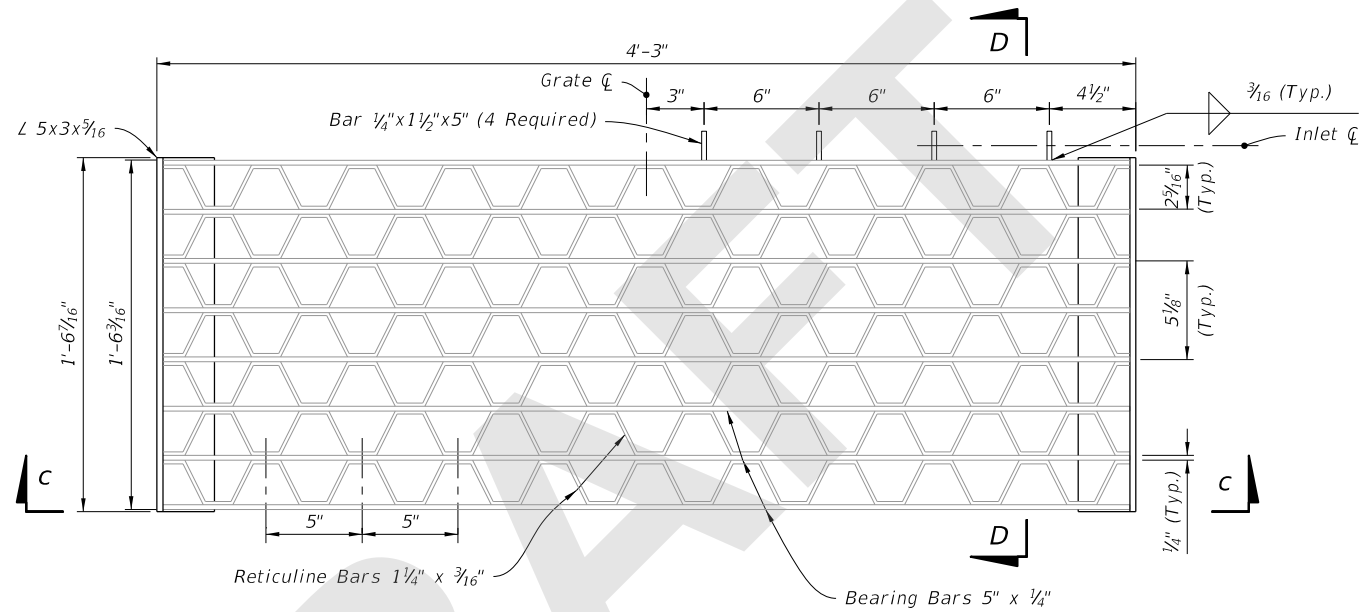
FY 2021-22
STANDARD PLANS

GUTTER INLET TYPE V

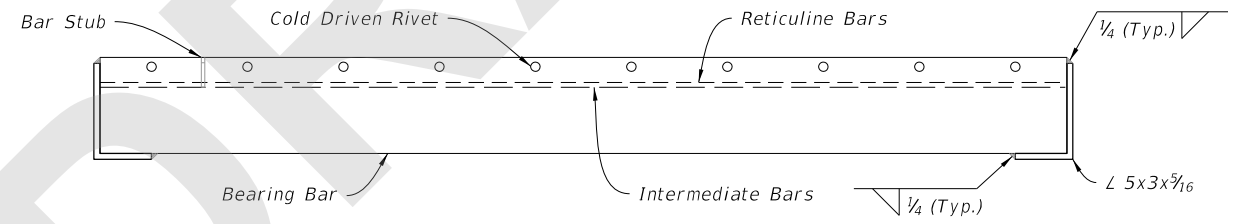
INDEX 425-041	SHEET 2 of 4
------------------	-----------------



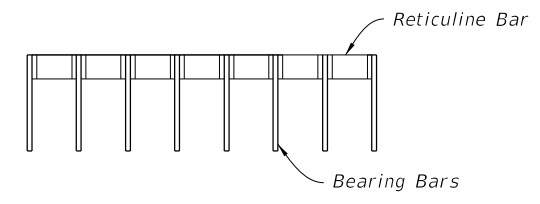
OPTIONAL BAR SPACING



PLAN



SECTION C-C



SECTION D-D

RETICULINE GRATE DETAIL

(Two Grates Required per Inlet)

9/18/2020 8:48:26 AM

STEEL GRATE DETAILS

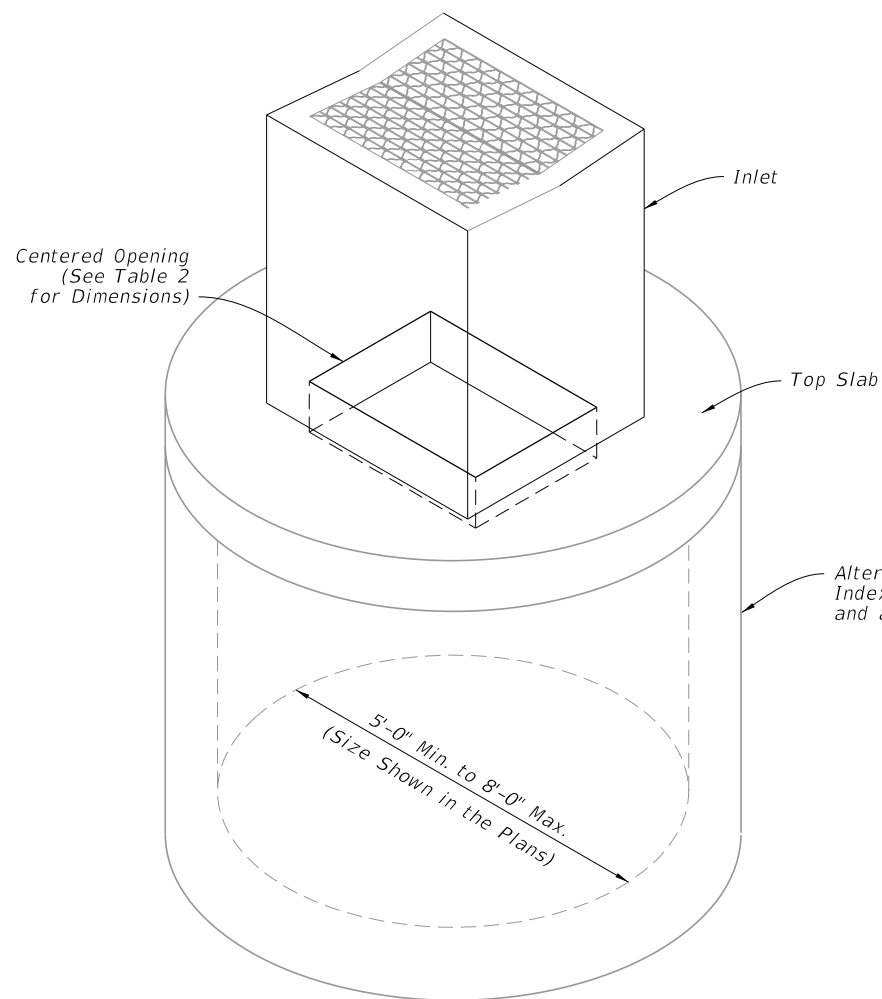
LAST REVISION	11/01/20	REVISION	DESCRIPTION:
---------------	----------	----------	--------------

FY 2021-22
STANDARD PLANS

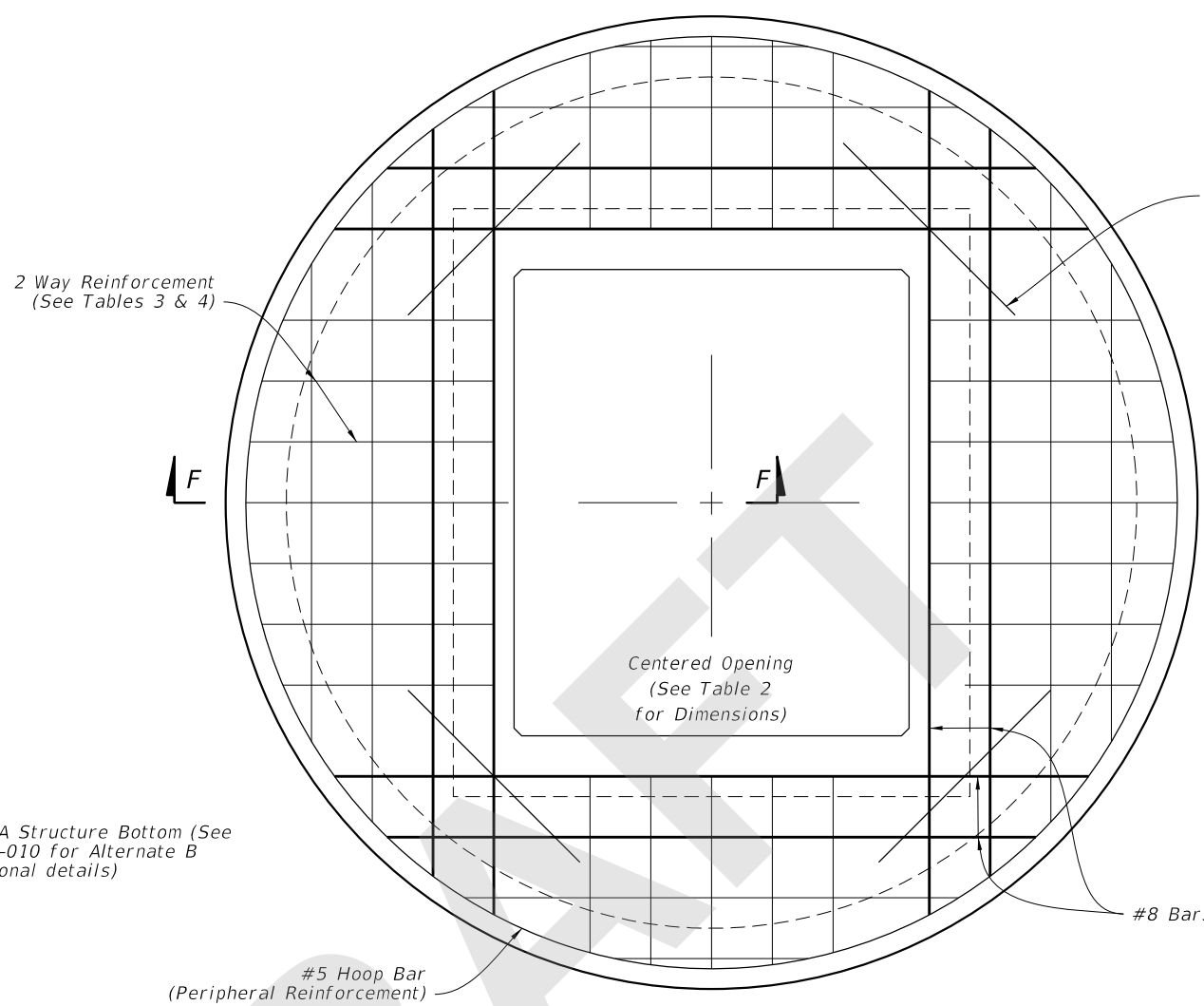
GUTTER INLET TYPE V

INDEX	SHEET
425-041	3 of 4

9/18/2020 8:48:32 AM

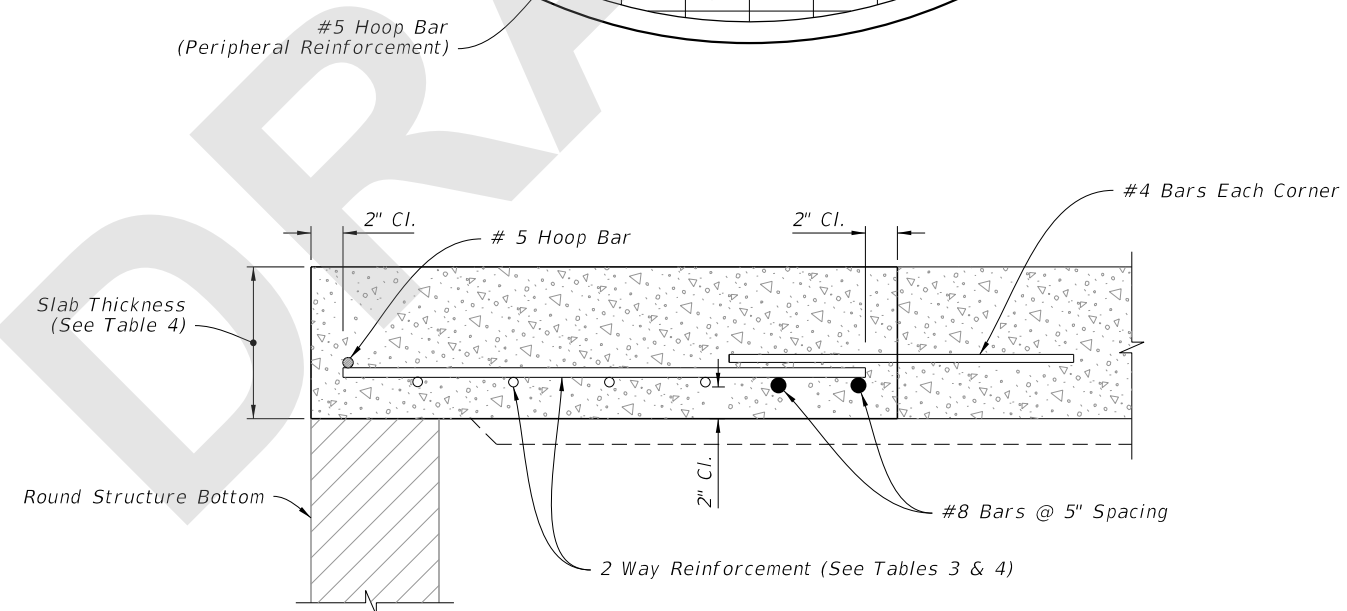


DIAMETER	OPENING SIZE	
	Min.	Max.
5'-0" to 8'-0"	2'-11" x 4'-0"	3'-3" x 3'-10"



SCHEDULE	GRADE 60 (BAR) OR 65 KSI & 70 KSI (WIRE FABRIC) In. ² /ft.
A	0.20
B	0.24
C	0.37
D	0.53
E	0.73
F	1.06
G	1.45

STRUCTURE DEPTH	SLAB THICKNESS	REINFORCING (2 WAY) SCHEDULE
SIZE: 5'-0"		
≥0.5' < 30'	9½"	C
30' < 40'	9½"	D
SIZE: 6'-0"		
0.5' < 8'	9½"	B
8' < 18'	9½"	C
18' < 30'	9½"	D
30' < 37'	9½"	E
37' < 40'	9½"	G
SIZE: 8'-0"		
≥0.5' < 9'	11½"	C
9' < 15'	11½"	D
15' < 23'	11½"	E
23' < 33'	11½"	E
33' < 40'	11½"	G



SECTION F-F

ISOMETRIC VIEW

TOP SLAB REINFORCEMENT DETAILS

ALTERNATE A STRUCTURE BOTTOM - TOP SLAB DETAILS

LAST REVISION	DESCRIPTION:
11/01/20	

**FY 2021-22
STANDARD PLANS**

GUTTER INLET TYPE V

INDEX	SHEET
425-041	4 of 4

GENERAL NOTES:

1. Work this Index with Index 425-001 and Index 425-010.
2. All reinforcing is Grade 60 bars with 2" minimum cover unless otherwise noted. Cut or bend bars out of way of pipe to clear pipe by 1½". See Index 425-001 for equivalent area of welded wire fabric.
2. Chamfer all exposed edges and corners ¾" or tooled to ¼" radius.
4. All dimensions are for both precast and cast-in-place inlets unless otherwise noted.
5. Quantities are for informational and estimating purposes only.

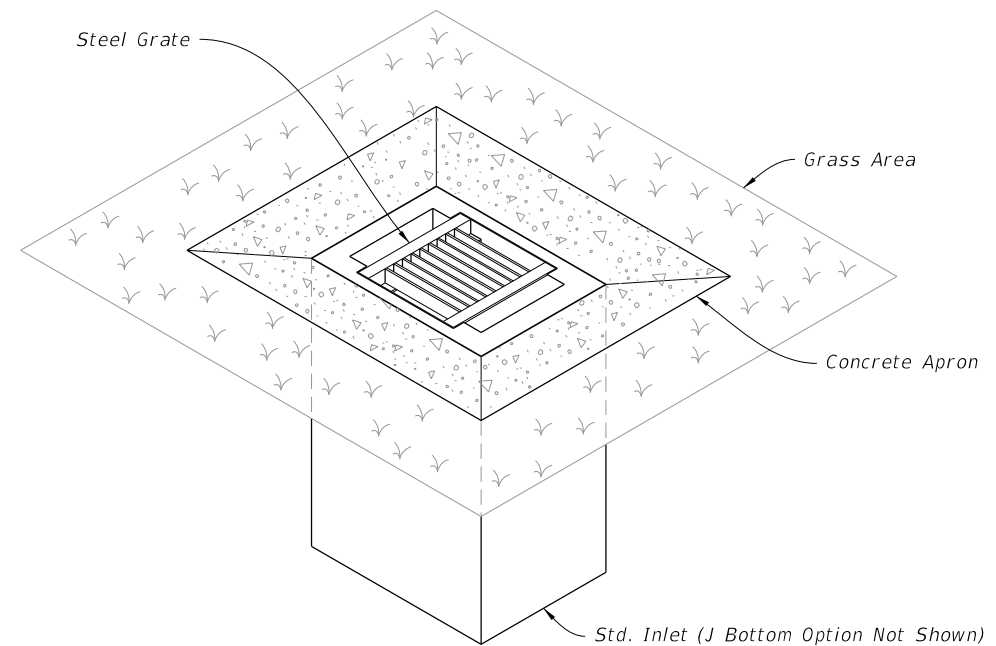


TABLE OF CONTENTS:	
Sheet	Description
1	General Notes and Contents
2	Dimensional, Reinforcement, and Steel Grate Details
3	Concrete Apron and Sodded Area Details
4	Alternate A Structure Bottom - Top Slab Details

===== DITCH BOTTOM INLET TYPE A =====
(Pipe Opening Not Shown)

9/18/2020 8:48:36 AM