

---

---

## Index 102-625 Temporary Road Closure - 5 Minutes or Less

### ORIGINATION

**Date:** May 26, 2020

**Name:** Derwood Sheppard

**Phone:** 8(50) 414-4334

**Email:** derwood.sheppard@dot.state.fl.us

### COMMENTARY

Sheet 1: Revised and Consolidated Details; Revised Notes; Deleted 'Buffer Space' and 'Distance Between Signs' Tables (Moved to 102-600); Deleted Conditions; Renamed Index.

### COMMENTS AND RESPONSES

**BLACK** = Industry Review Comments    **RED** = Standard Plans Response

**Name:** Dan Preslar / FDOT District 1

**Date:** September 14, 2020

#### **COMMENT:**

Note 1 insert comma after “facilities” to make the exception more clear

**RESPONSE:** Agreed

**Change Made**

*Date: 09/26/2020*

**Name:** Bogdan Piorkowski / Balm Beach County

**Date:** September 14, 2020

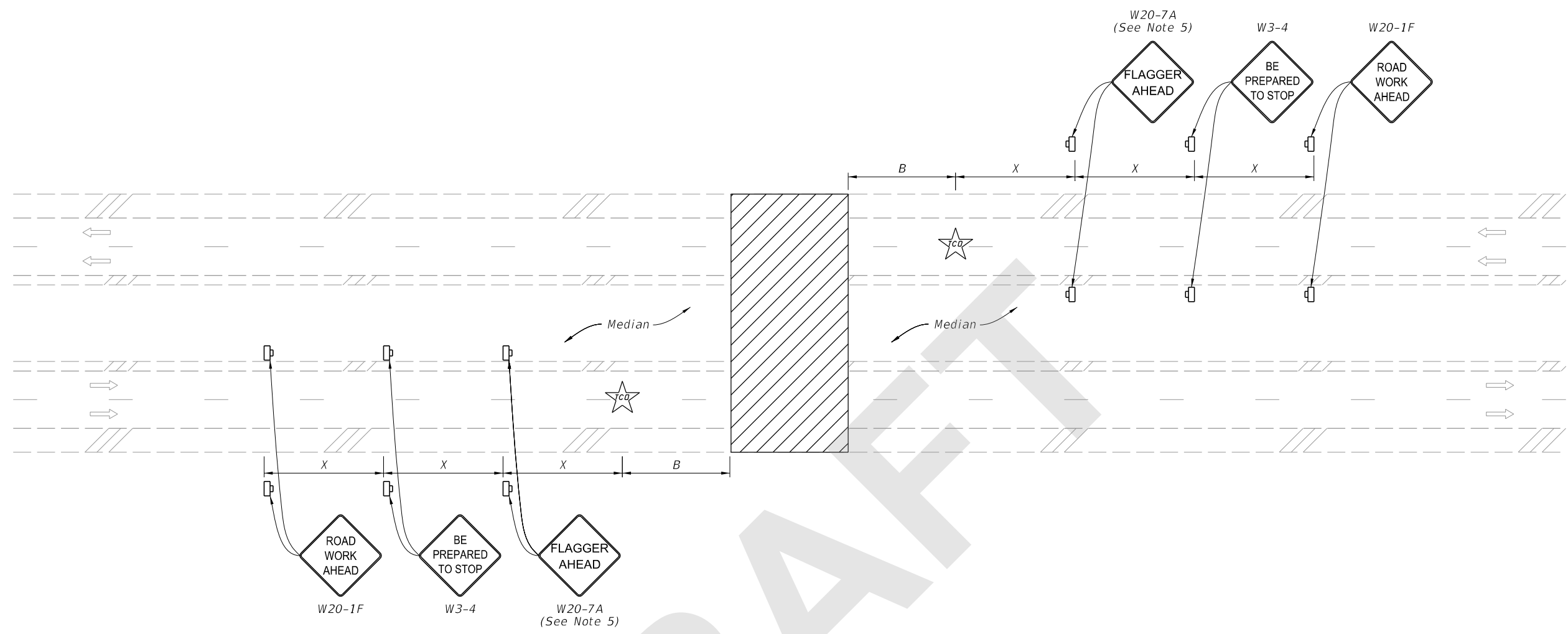
#### **COMMENT:**

For a low volume or medium volume road why can't a flagger be used?

**RESPONSE:** The previous allowance has been reviewed and the Index has been updated to reflect a multilane roadway with TCO and an additional note allowing a flagger to substitute the TCO for two-lane roadways with approval of the Engineer.

**Change Made**

*Date: 09/26/2020*



(Multilane Roadway Shown, Two-Lane Roadway Similar)

**NOTES:**

1. This Index applies to two-lane, two-way and multilane roadways, except limited access facilities, with temporary daytime roadway closures of 5 minutes or less.
2. B=Buffer Length  
X=Work Zone Sign Distance  
See Index 102-600 for "B" and "X" values.
3. For Two-Lane Roadways, a Flagger may substitute the traffic control office with approval of the Engineer.
4. Traffic volume or complexity of the roadway may dictate additional signs, devices or traffic control officers.
5. Optionally, use "Flagger Ahead" sign with symbol (W20-7) instead of "Flagger Ahead" sign with text (W20-7A).
6. Dual Signs are required for divided roadways only.

**SYMBOLS:**

- Work Area
- Work Zone Sign
- Lane Identification and Direction of Traffic
- Traffic Control Officer

9/18/2020 1:27:40 PM

LAST REVISION 11/01/20	REVISION	DESCRIPTION:		FY 2021-22 STANDARD PLANS	TEMPORARY ROADWAY CLOSURE	INDEX 102-625	SHEET 1 of 1
---------------------------	----------	--------------	--	------------------------------	---------------------------	------------------	-----------------