

---

## Index 646-001 Aluminum Pedestals and Posts – Pedestrian Detectors and Signals

### ORIGINATION

**Date:** June 3, 2020

**Name:** Derwood Sheppard

**Phone:** (850) 414-4334

**Email:** derwood.sheppard@dot.state.fl.us

### COMMENTARY

New Index:

Created to consolidate the details of Aluminum Pedestals and Posts used for Pedestrian Signals and Detectors. Existing details are relocated in this New Index from Indexes 653-001 and 665-001. New details have been created to address the foundation and placement details for Pedestals installed with Sidewalk Curb. These were added to prevent pushbuttons from being located greater than 10" from the sidewalk landing.

### COMMENTS AND RESPONSES

**BLACK** = Internal Review Comments    **RED** = Standard Plans Response

**Name:** Pablo, Alonso

**Date:** August 28, 2020

**COMMENT:**

- 1-Recommend to make Plan View, Section A-A proportionate; add label for 'sidewalk curb'; show post placement dimension in other direction.
- 2-In the title change to ".....Pedestal Mounted.....".

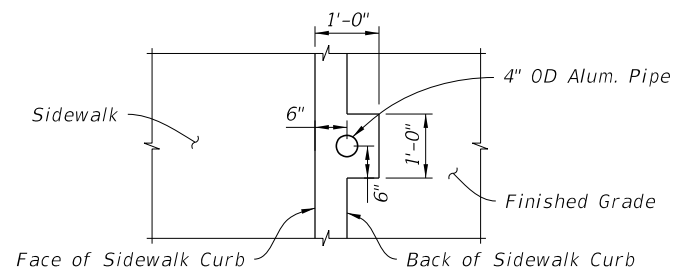
**RESPONSE:** Agree with both comments.

**Changes made to Index:** Section A-A has been proportionality corrected, post placement dimension in both directions added, and title corrected.

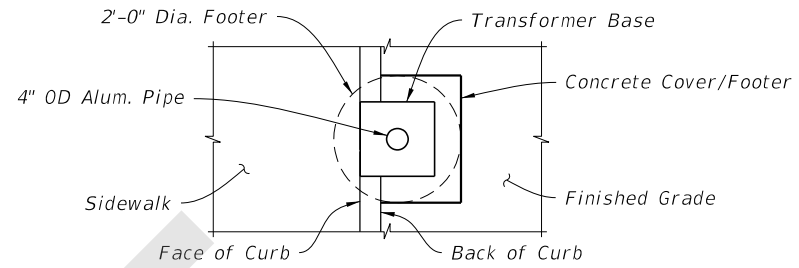
**Date:** 9-2-20

**NOTES:**

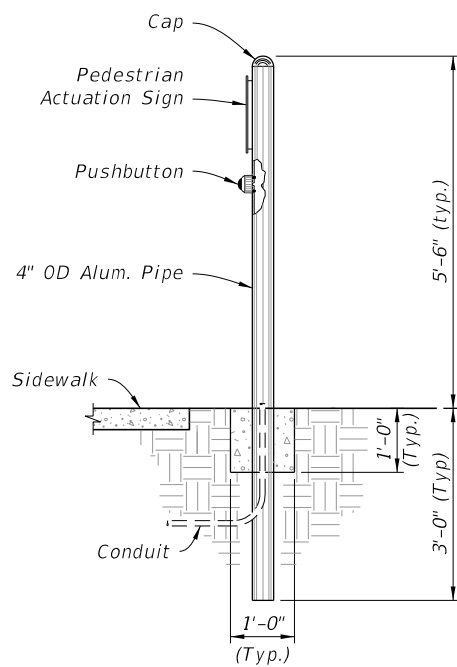
1. Work this Index with Specification 646.
2. For Pedestrian Signals see Index 653-001.
3. For Pedestrian Detector Assembly (i.e., Pushbutton and Sign) details see Index 665-001.
4. Construct footing with Class I Concrete, footing may be Cast-In-Place (C-I-P) or Precast.



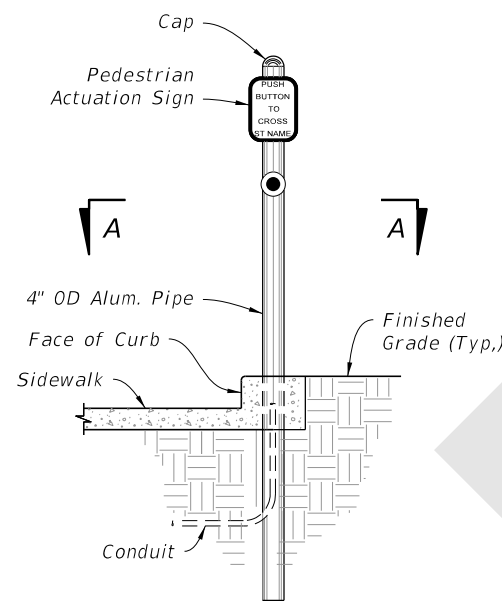
PLAN VIEW  
SECTION A-A



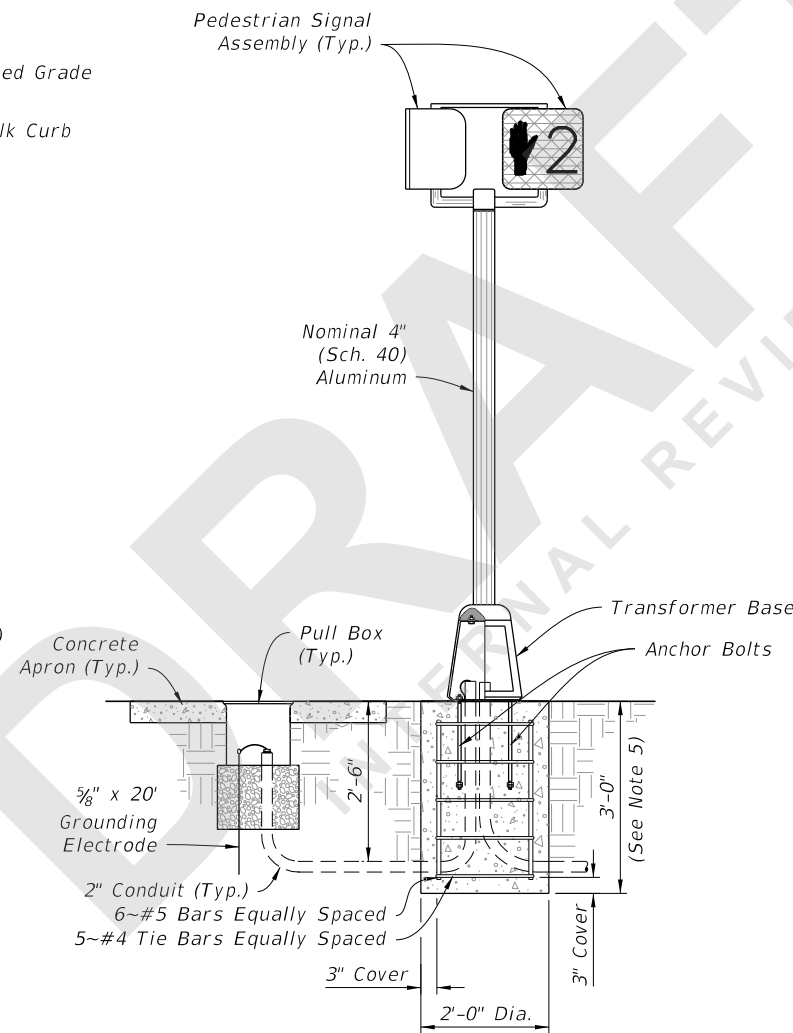
PLAN VIEW  
SECTION B-B



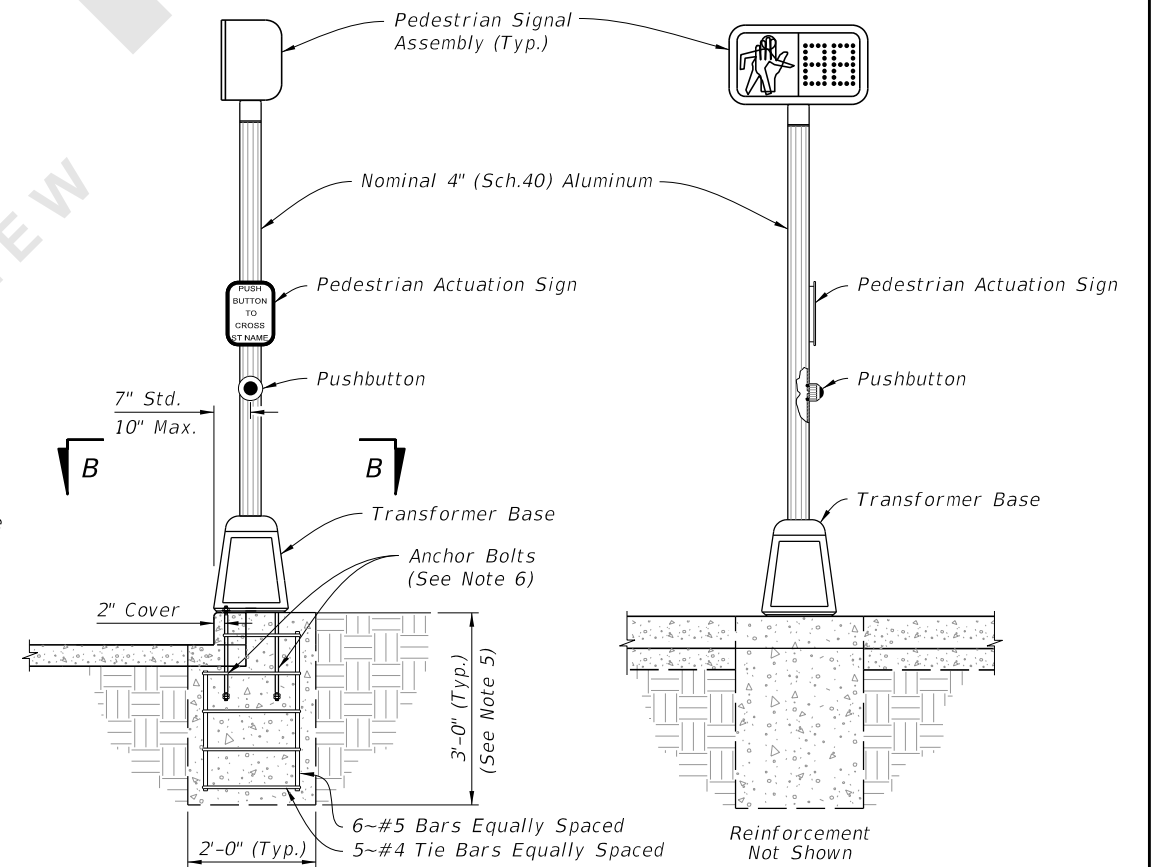
ADJACENT TO SIDEWALK



IN SIDEWALK CURB



ADJACENT TO SIDEWALK



SIDE ELEVATION

FRONT ELEVATION

IN SIDEWALK CURB

POST MOUNTED

PEDESTAL MOUNTED

9/1/2020 6:27:42 AM

|                           |          |              |  |                              |  |                  |                 |
|---------------------------|----------|--------------|--|------------------------------|--|------------------|-----------------|
| LAST REVISION<br>11/01/20 | REVISION | DESCRIPTION: |  | FY 2021-22<br>STANDARD PLANS | ALUMINUM POST AND PEDESTAL MOUNTED<br>PEDESTRIAN DETECTORS AND SIGNALS | INDEX<br>646-001 | SHEET<br>1 of 1 |
|---------------------------|----------|--------------|--|------------------------------|--|------------------|-----------------|