
Index 425-053 Ditch Bottom Inlet Types F and G

ORIGINATION

Date: 11-1-19

Name: Tim Holley

Phone: 850 414-4117

Email: tim.holley@dot.state.fl.us

COMMENTARY

Reorganized Details and Sheets to declutter Index. Moved information from detail callouts to Notes in order to decrease clutter of the drawing. Moved design information to SPI.

COMMENTS AND RESPONSES

BLACK = Internal Review Comments **RED** = Standard Plans Response

Name: Missy Hollis

Date: 8-10-20

COMMENT: The term used in the Ditch Bottom Inlet indexes referring to either ditch pavement or inlet pavement around the inlet could be confusing, since Specification 524 pertains to ditch pavement. As the concrete surrounding the inlet is to be included in the cost of the inlet, it is recommended to change the term to “concrete apron” in order to differentiate that concrete from the pavement outlined in Specification 524.

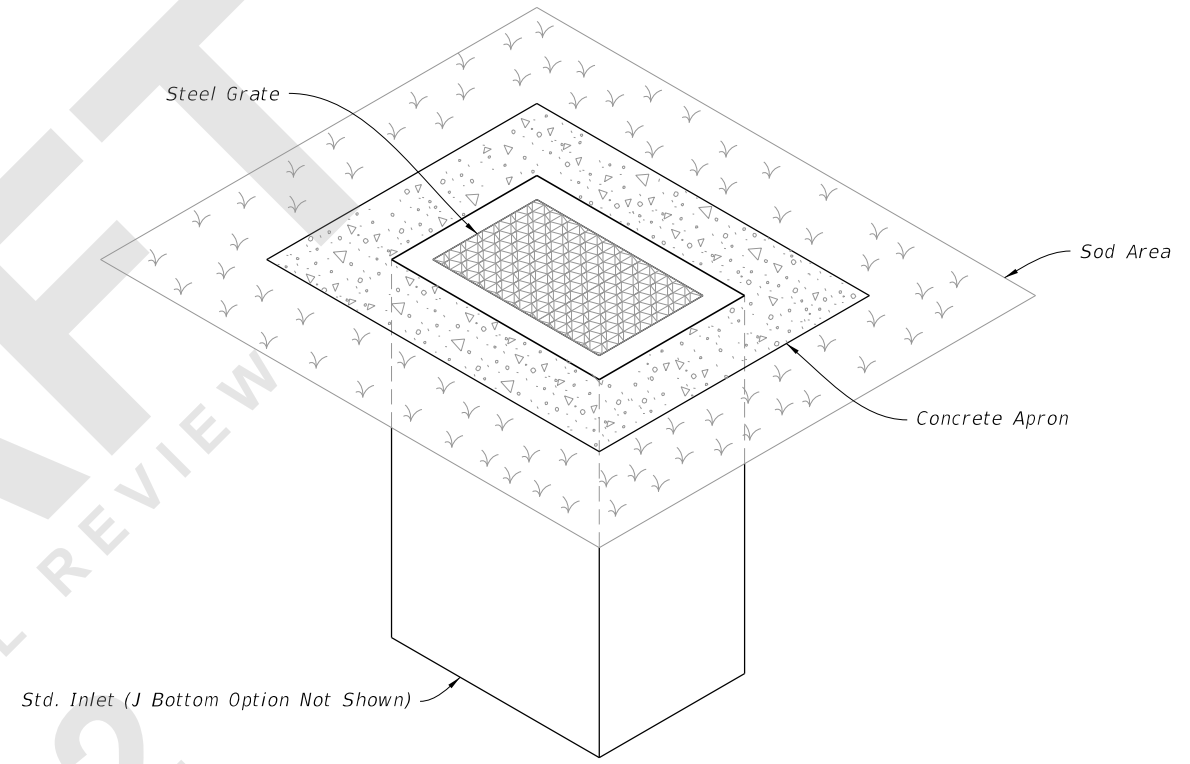
RESPONSE: Agreed

Change made to Index: The index was revised to include concrete apron in the place of concrete ditch pavement.

Date: 8-24-2020

GENERAL NOTES:

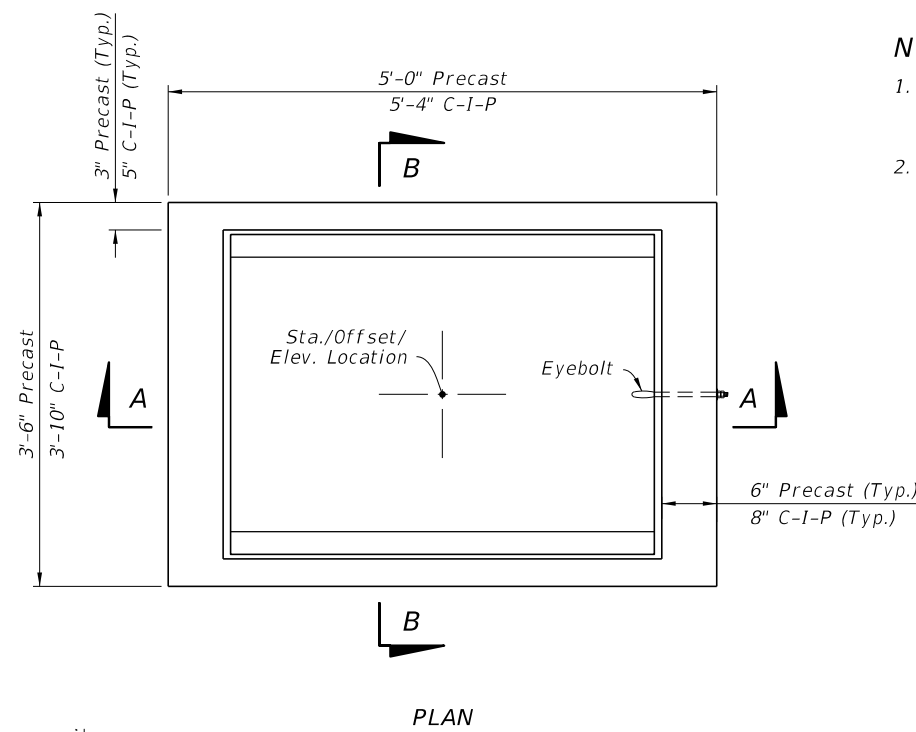
1. Work this Index with Index 425-001 and Index 425-010.
2. When inlet is placed in areas subject to bicycle traffic, install filler bar when clearance or gap is greater than $\frac{3}{8}$ " as shown in Index 425-031.
3. These inlets may be used with Alternate B structure bottoms, Index 425-010.
4. Chamfer all exposed edges and corners $\frac{3}{4}$ " chamfer or tooled to $\frac{1}{4}$ " radius.
5. See Index for supplemental details.
6. Reinforcing bars are Grade 60 with 2" minimum cover unless otherwise noted. Cut or bend bars to provide $1\frac{1}{2}$ " clearance around pipe opening. Provide one additional #4 bar above and at each side of pipe opening as shown.
7. Dimensions are for both precast and cast-in-place inlets unless otherwise noted.
8. Quantities are for informational and estimating purposes only.



DITCH BOTTOM INLET TYPE F
 (Type G Similar, Pipe Connection Not Shown)

TABLE OF CONTENTS:	
Sheet	Description
1	General Notes and Contents
2	Type F - Dimensional, Reinforcement, and Grate Details
3	Type G - Dimensional, Reinforcement, and Grate Details
4	Concrete Apron and Sodded Area Details

8/28/2020 7:58:53 AM



NOTES:

1. The Grate, Concrete Apron, and Sod not shown on Inlet PLAN view. See Sheet 4 for Concrete Apron and Sodded Area details.
2. Construction joints permitted between these limits. See Index 425-001 for minimum dimensions.

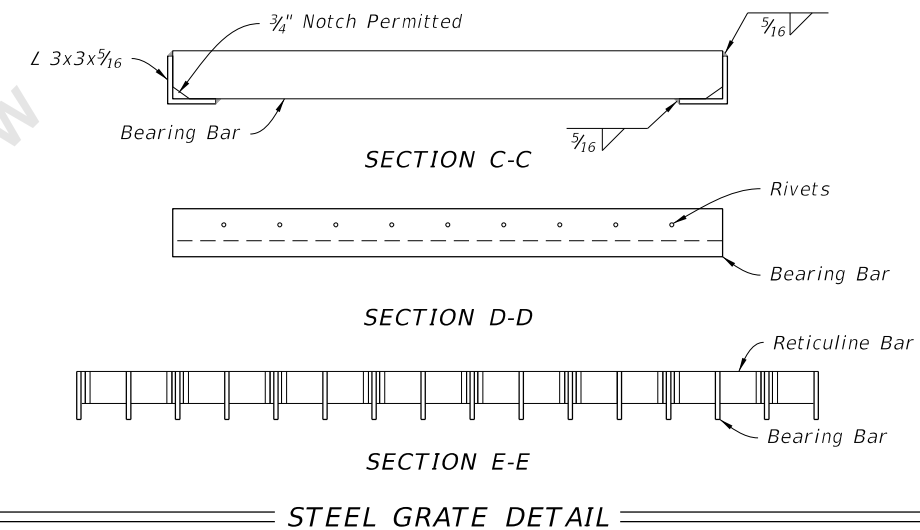
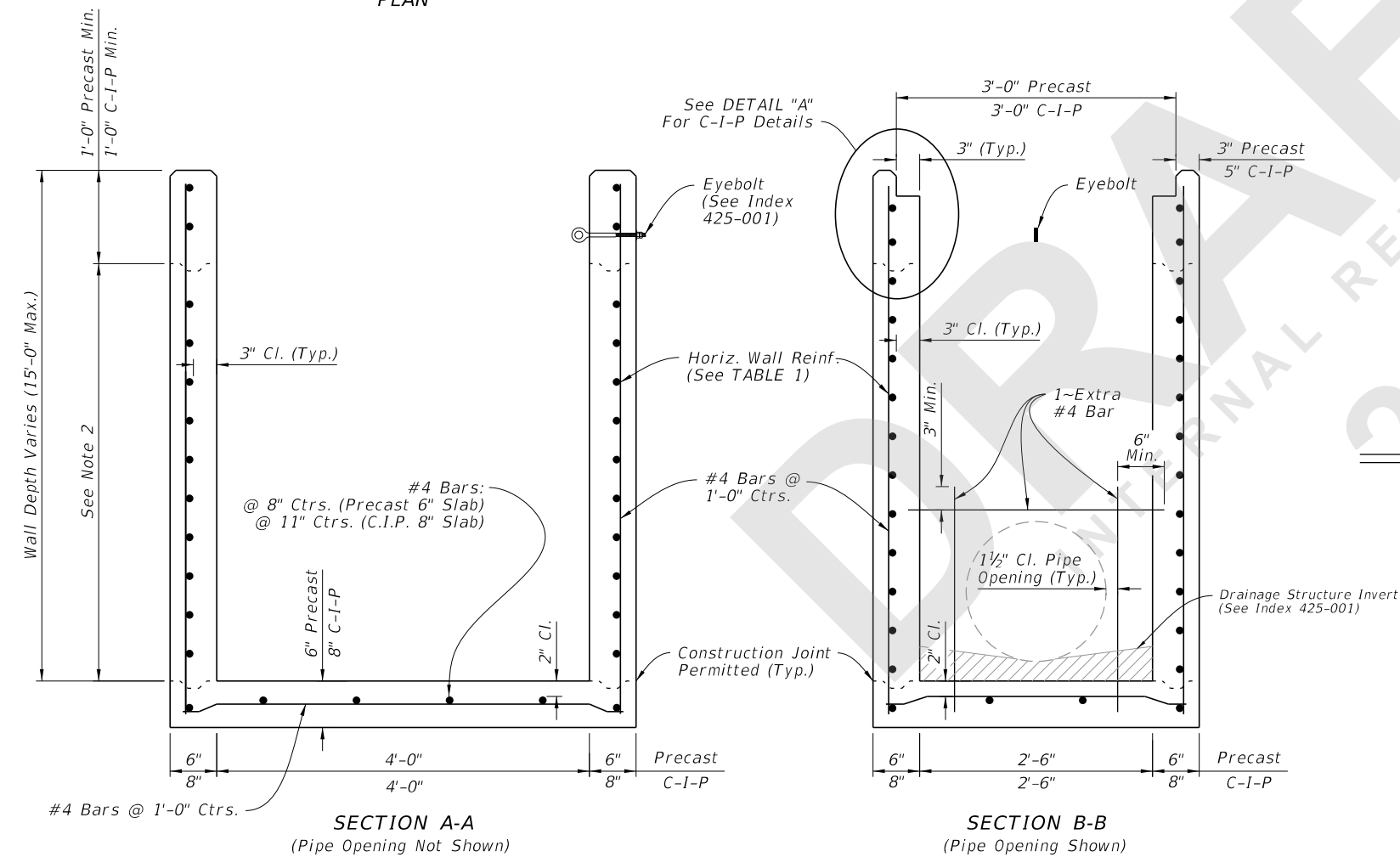
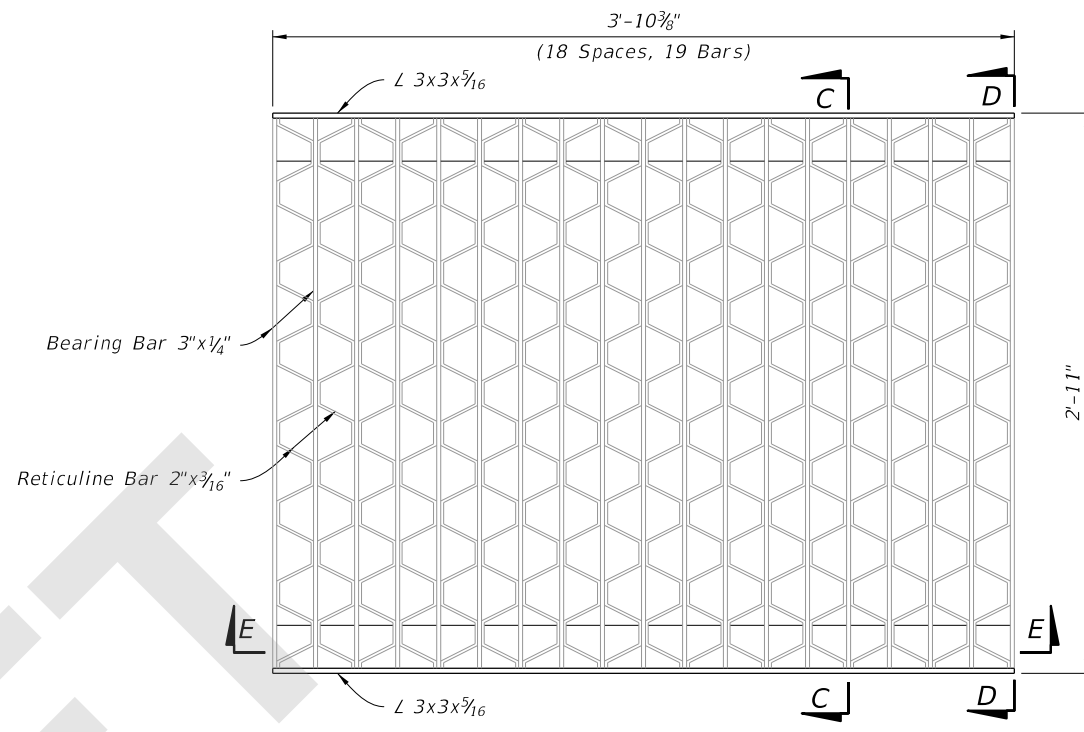
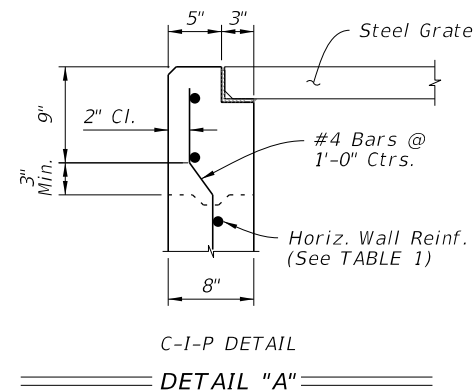


TABLE 1
HORIZONTAL WALL REINFORCING SCHEDULE

WALL DEPTH	SCHEDULE	AREA (in. ² /ft.)	MAX. SPACING	
			BARS	WWR
0' - 4'	A12	0.200	12"	8"
4' - 7'	A6	0.200	6"	5"
7' - 12'	B5.5	0.240	5 1/2"	5"
12' - 15'	Special 1	0.267	5"	4"

DIMENSIONAL AND REINFORCEMENT DETAILS

TYPE F - DIMENSIONAL, REINFORCEMENT, AND GRATE DETAILS

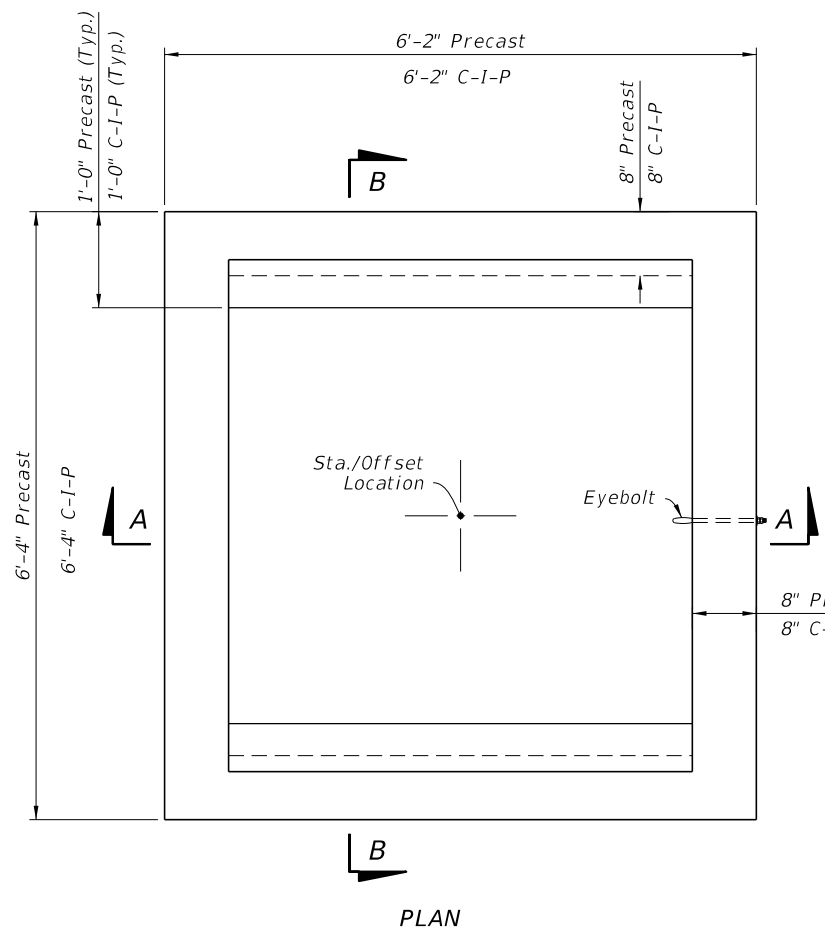
8/28/2020 7:58:55 AM

LAST REVISION 11/01/20	DESCRIPTION:
---------------------------	--------------

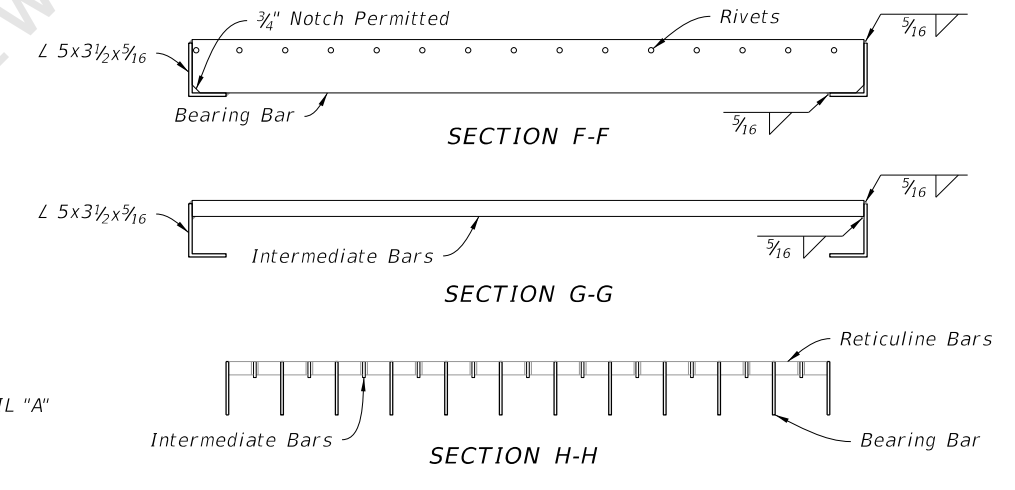
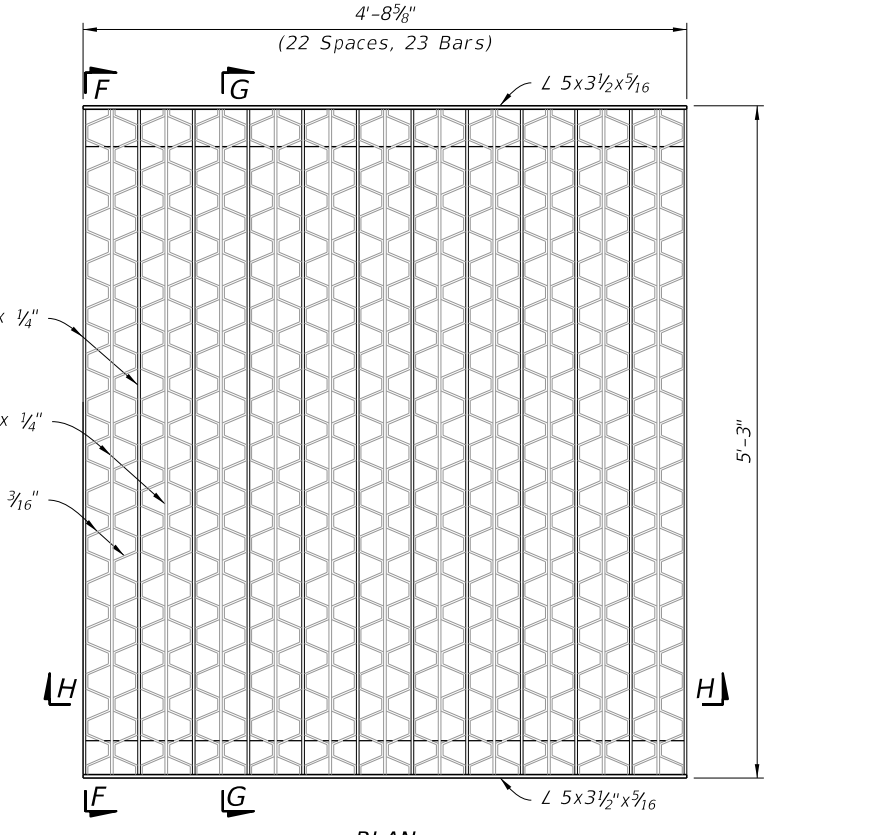
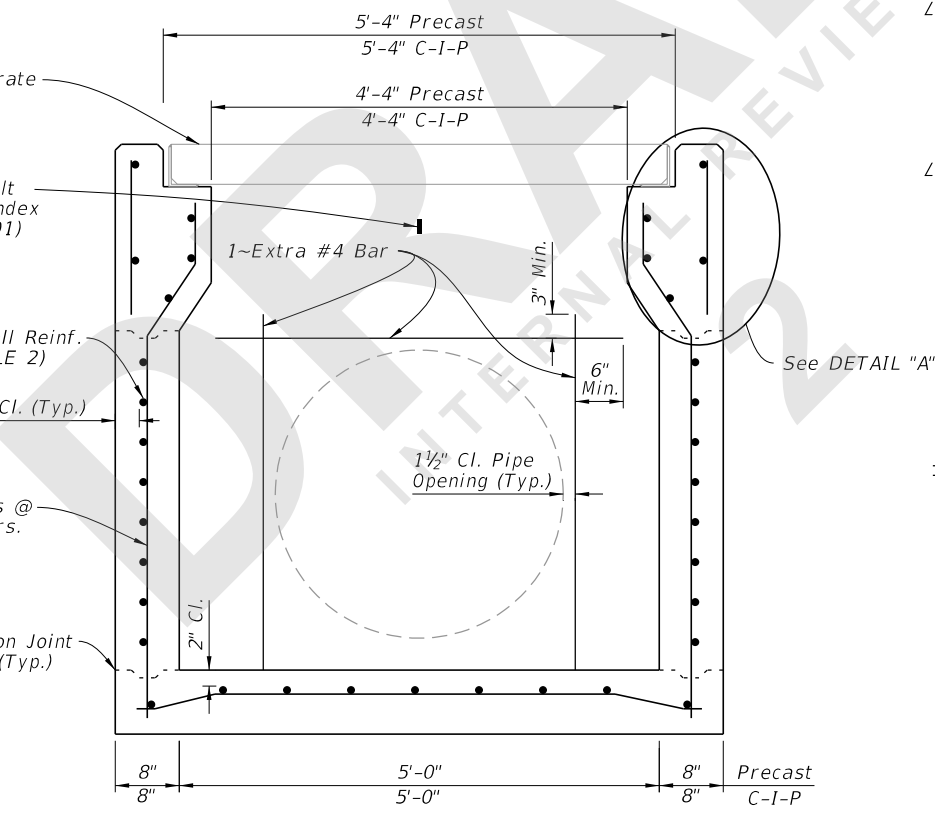
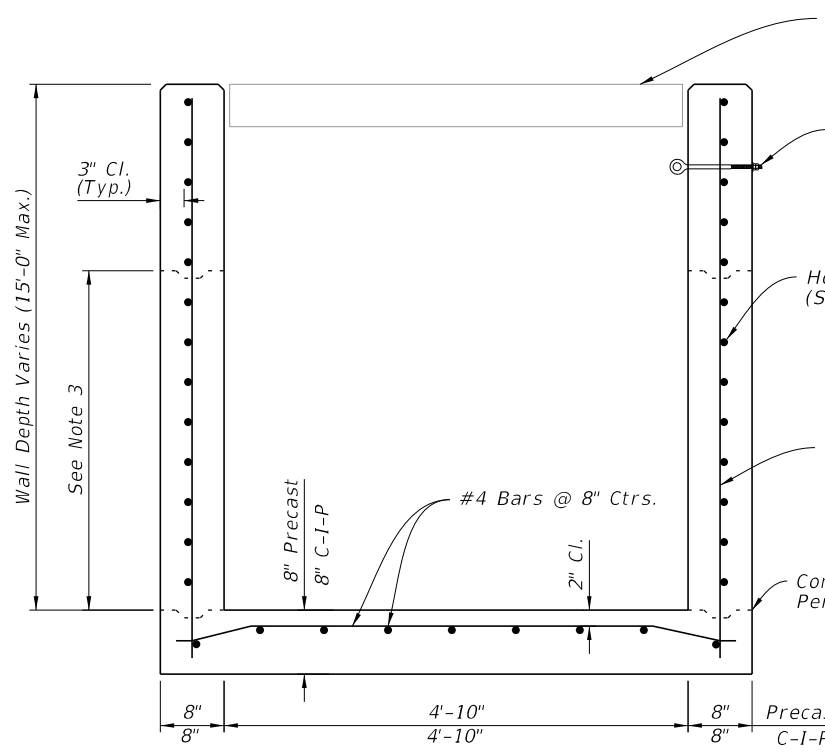
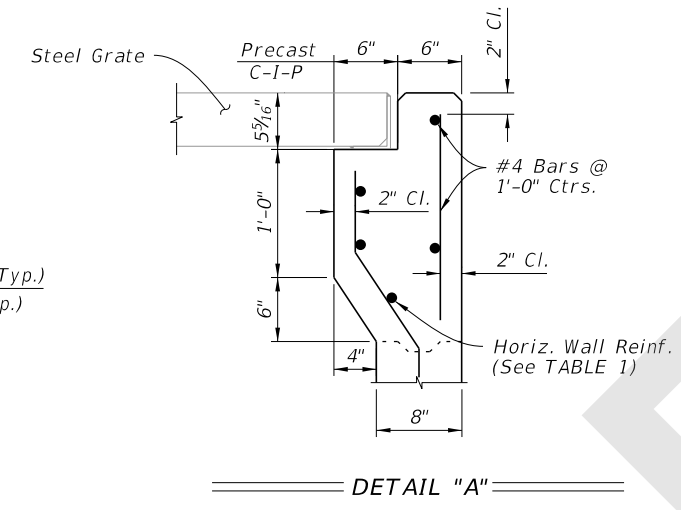
FDOT
FY 2021-22
STANDARD PLANS

DITCH BOTTOM INLET TYPE F AND G

INDEX 425-053	SHEET 2 of 4
------------------	-----------------



- NOTES:**
1. Grate, Concrete Apron, and Sod not shown in Plan view
 2. See Sheet 4 for Concrete Apron and Sodded Area details.
 3. Construction joints permitted between these limits. See Index 425-001 for minimum dimensions.



**TABLE 2
HORIZONTAL WALL REINFORCING SCHEDULE**

WALL DEPTH	SCHEDULE	AREA (in. ² /ft.)	MAX. SPACING	
			BARS	WWR
0' - 3'	A12	0.20	12"	8"
3' - 7'	A6	0.20	6"	5"
7' - 10'	B5.5	0.24	5 1/2"	5"
10' - 15'	C6.5	0.37	6 1/2"	6"

DIMENSIONAL AND REINFORCEMENT DETAILS

TYPE G - DIMENSIONAL, REINFORCEMENT, AND GRATE DETAILS

8/28/2020 7:58:59 AM

LAST REVISION	DESCRIPTION:
11/01/20	

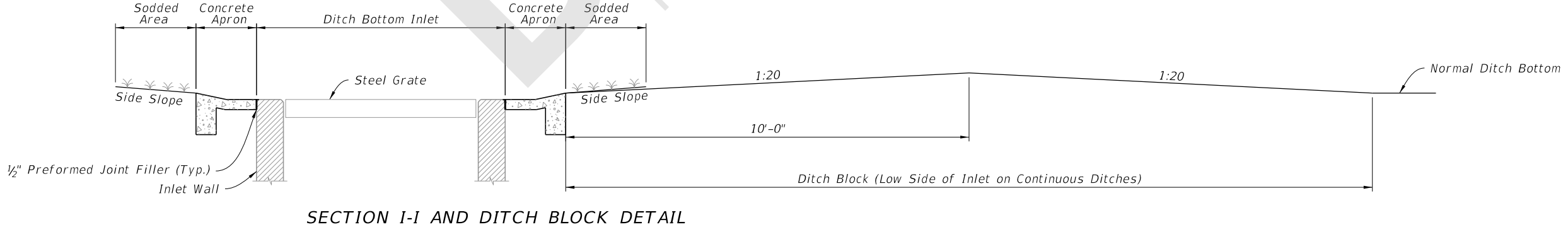
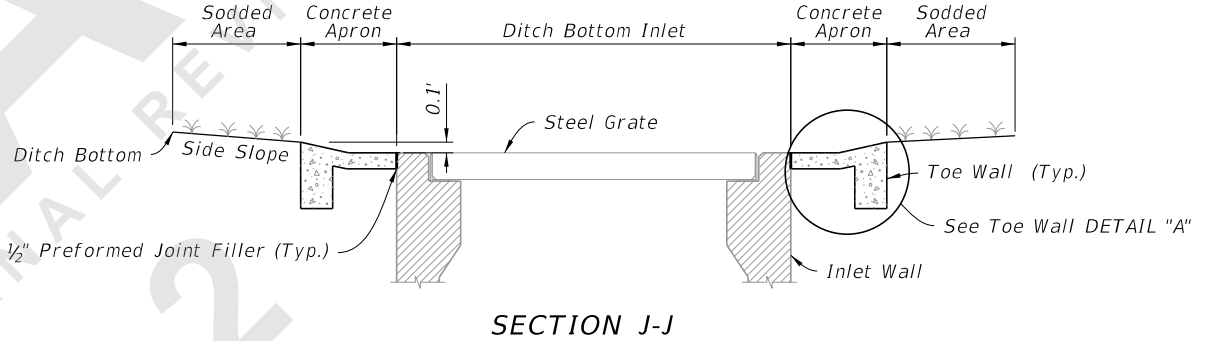
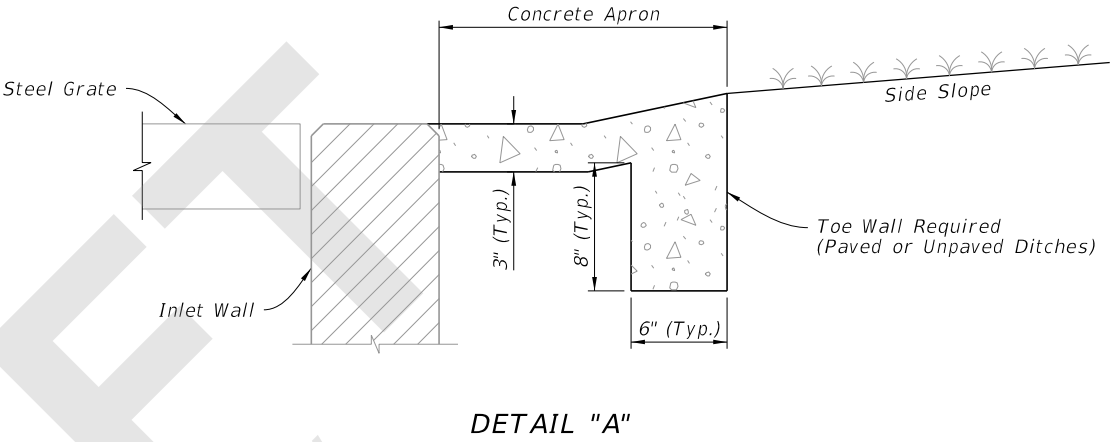
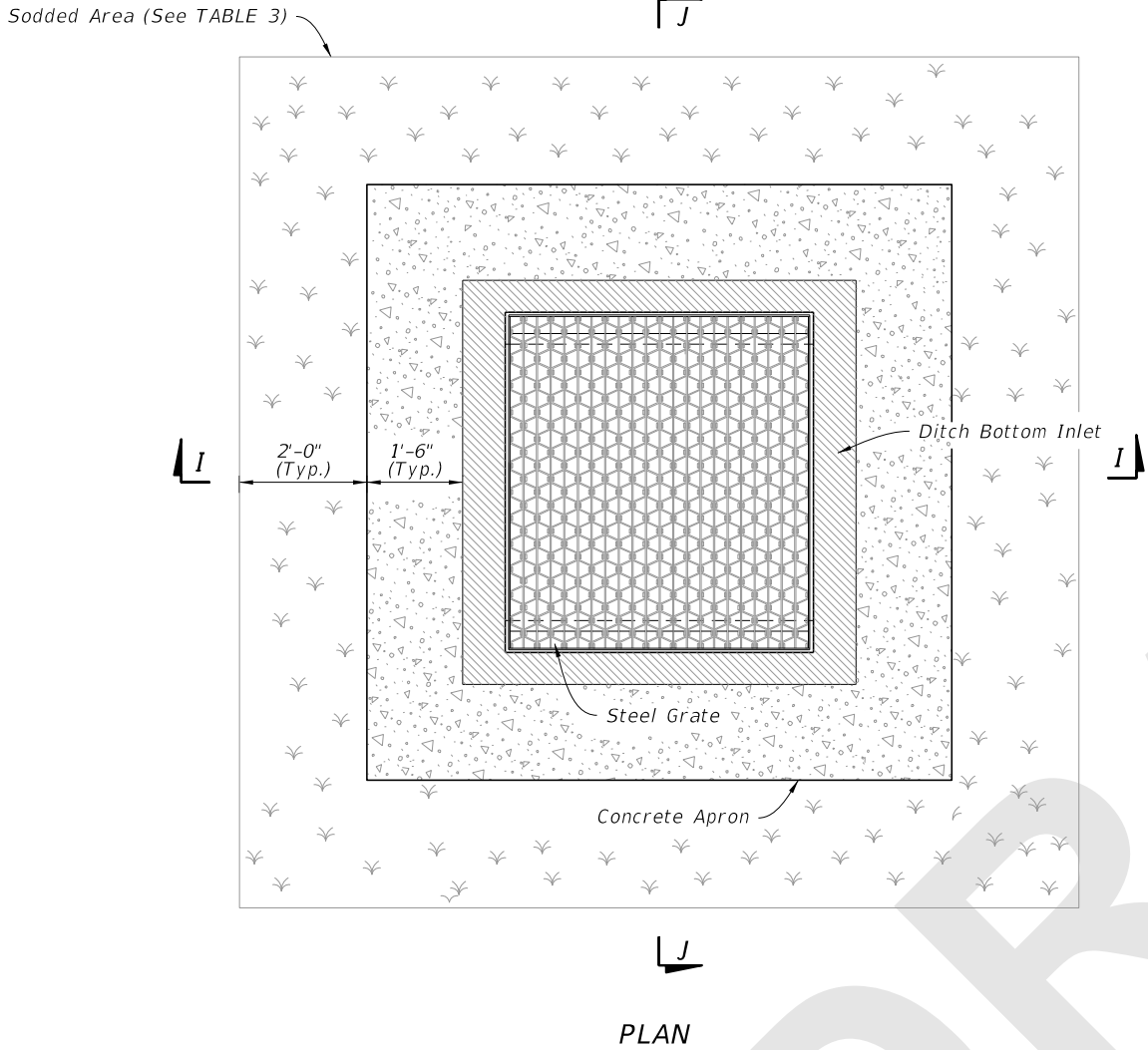
FDOT
FY 2021-22
STANDARD PLANS

DITCH BOTTOM INLET TYPE F AND G

INDEX	SHEET
425-053	3 of 4

INLET	CONCRETE (CY)	SOD W/CONCRETE (SY)	SOD ONLY (SY)
F	0.43	10	6
G	0.34	9	7

- NOTES:**
1. Concrete Apron to be installed only where called for in the Plans.
 2. Sod always required.



8/28/2020 7:59:02 AM



FY 2021-22
STANDARD PLANS

CONCRETE APRON AND SODDED AREA DETAILS

DITCH BOTTOM INLET TYPE F AND G

INDEX
425-053

SHEET
4 of 4

LAST REVISION	DESCRIPTION:
11/01/20	