
Index 425-041 Gutter Inlet Type V

ORIGINATION

Date: 11-01-19

Name: Rick Jenkins

Phone: 850 414-4355

Email: Rick.Jenkins@dot.state.fl.us

COMMENTARY

Reorganized Details and Sheets to declutter Index. Moved information from detail callouts to Notes in order to decrease clutter of the drawing. Moved design information to SPI.

Grate change consistent with 425-040. Removed reference to 425-051 for Grate and included detail of the grate specific to this Index. Changing the Grate to all Bearing Bars provides a grate that can handle HL-93 loading.

COMMENTS AND RESPONSES

BLACK = Internal Review Comments **RED** = Standard Plans Response

Name: Nathan Pulido

Date: 8-27-2020

COMMENT: 425-040 type-S section B-B refers to "grate elevation" and 425-041 and 425-054 refers to "Inlet elevation". Should be consistent throughout.

RESPONSE: Agreed

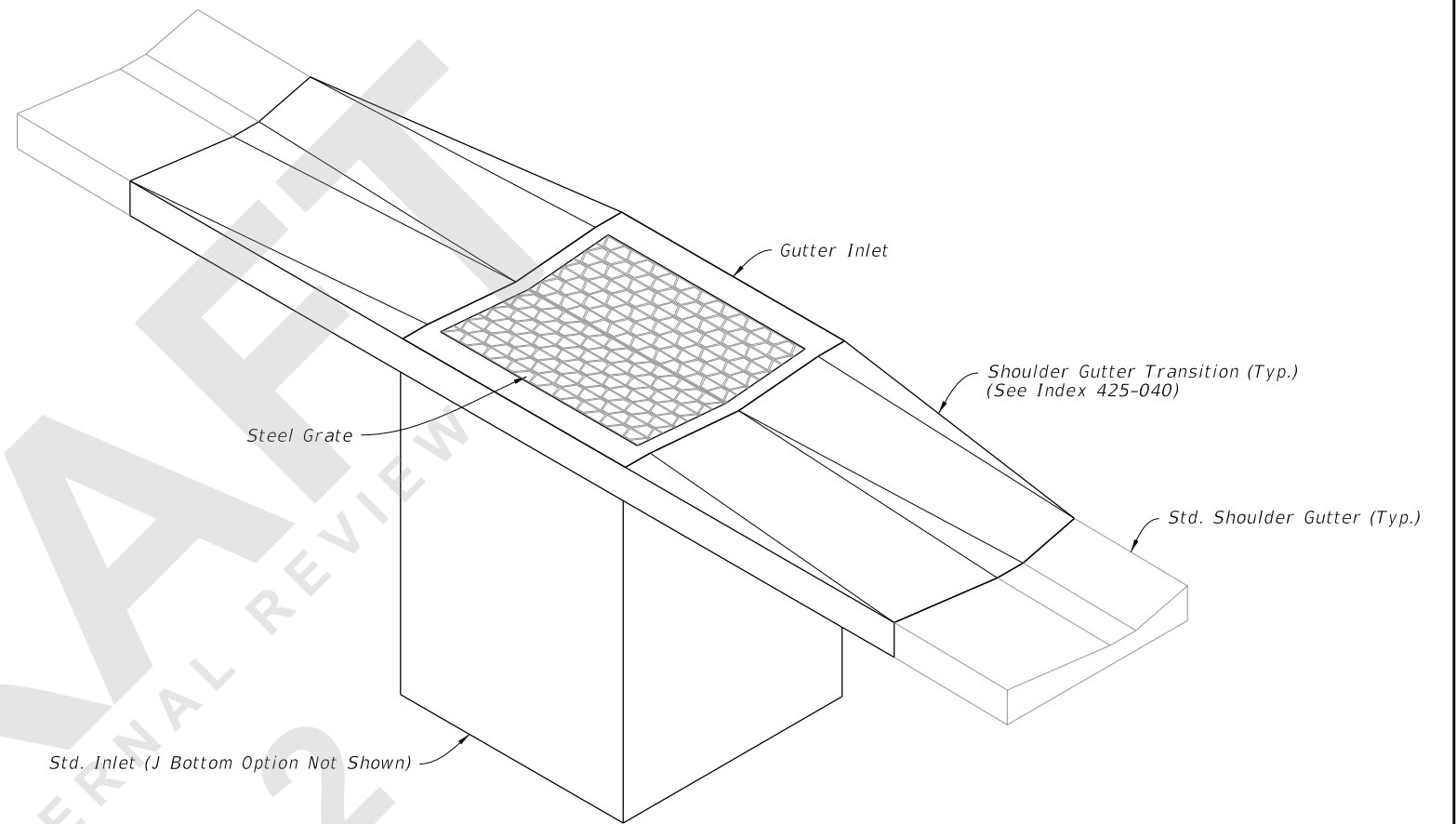
Change made to Index: Changed callouts in each index to "Sta./Offset Elev." for uniformity.

Date: 8-28-2020

GENERAL NOTES:

1. Work this Index with Index 425-001 and Index 425-010.
2. All reinforcing is Grade 60 bars with 2" min. cover unless otherwise noted.
See Index 425-001 for equivalent area of welded wire fabric. Cut or bend bars out of way of pipe to clear pipe 1½".
3. Chamfer all exposed edges and corners ¾" or tool to ¼" radius.
4. Dimensions are for both precast and cast-in-place inlets unless otherwise noted.

TABLE OF CONTENTS:	
Sheet	Description
1	General Notes and Contents
2	Dimensional and Reinforcement Details
3	Steel Grate Details
4	Alternate A Structure Bottom - Top Slab Details



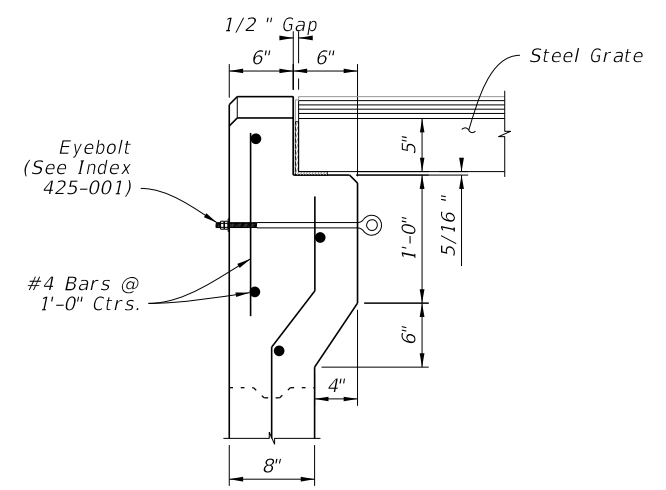
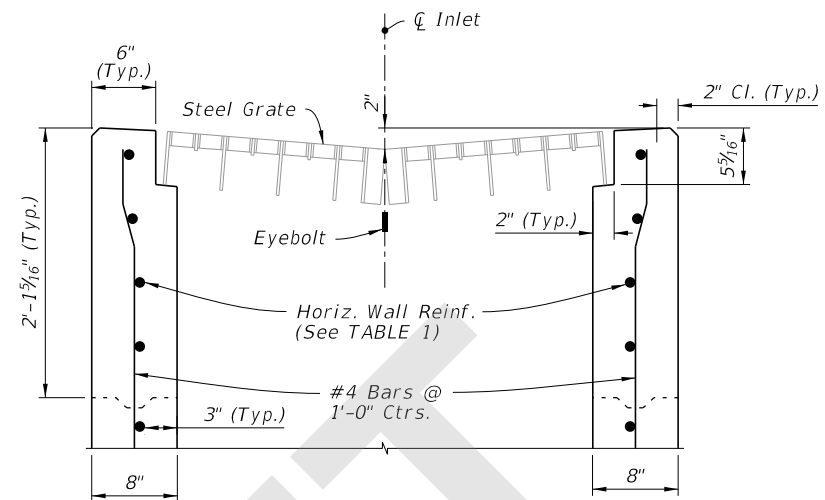
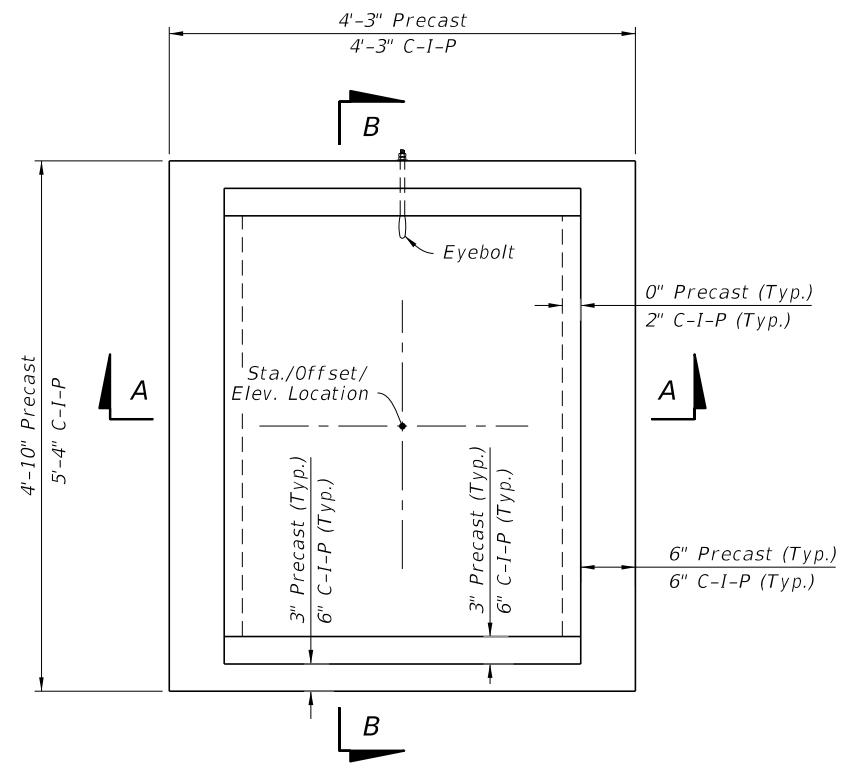
DRAFT

INTERNAL REVIEW

22

===== GUTTER INLET TYPE V =====
(Pipe Opening Not Shown)

8/28/2020 1:32:54 PM



CAST-IN-PLACE OPTION

See DETAIL "A" For C-I-P Option

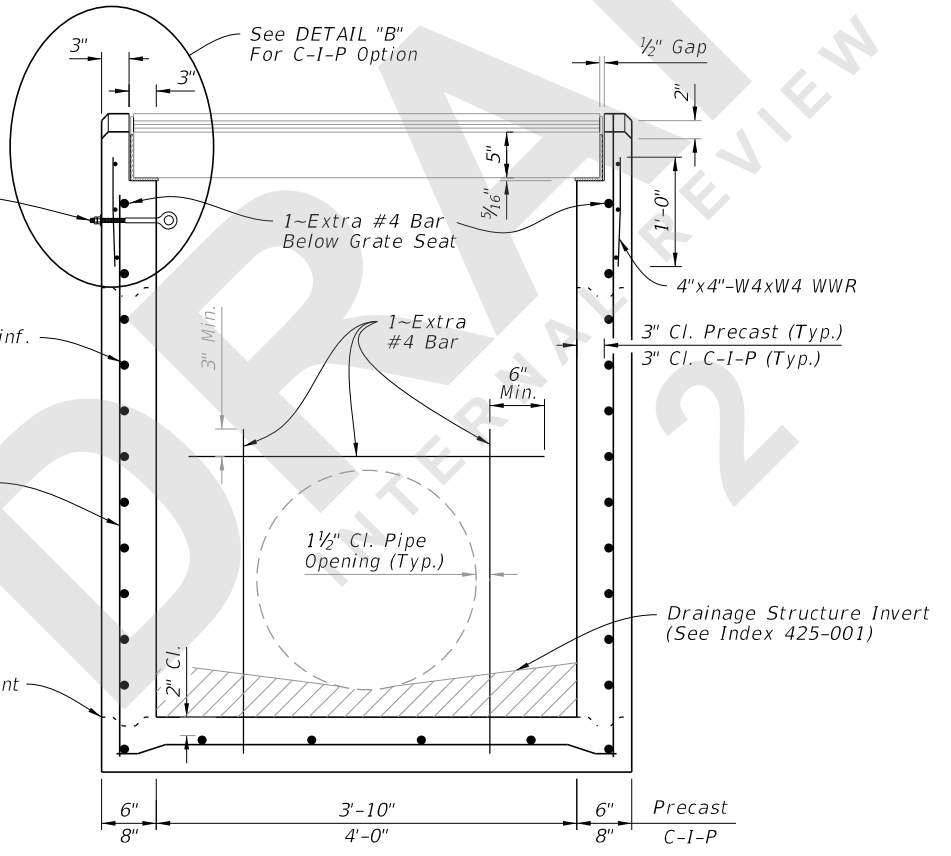
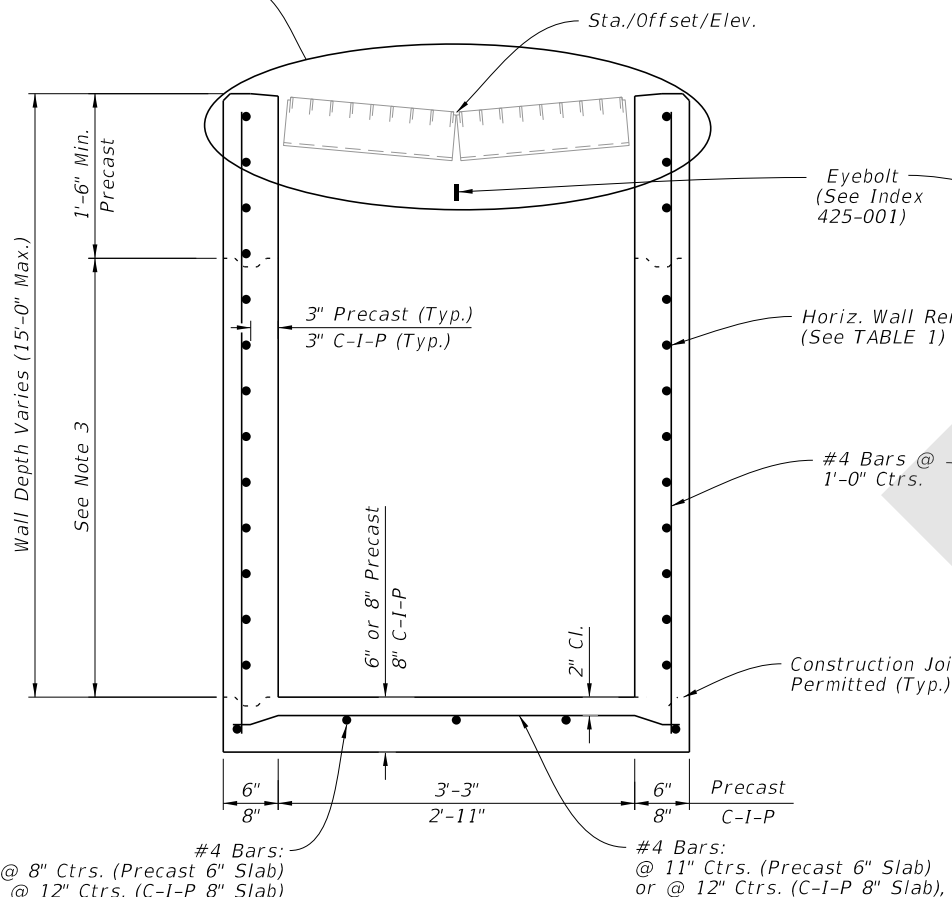


TABLE 1
HORIZONTAL WALL REINFORCING SCHEDULE

WALL DEPTH	SCHEDULE	AREA (in. ² /ft.)	MAX. SPACING	
			BARS	WWR
0' - 5'	A12	0.20	12"	8"
5' - 9'	A6	0.20	6"	5"
9' - 12'	A4	0.20	4"	3"
9' - 15'	B5.5	0.24	5 1/2"	5"

- NOTES:**
1. Plan View: Grate, Concrete Ditch Pavement, and Sod not shown on structure detail.
 2. Precast Shown, Cast-In-Place (C-I-P) similar.
 3. Construction joints permitted between these limits. See Index 425-001 for minimum dimensions.

SECTION A-A
(Pipe Opening Not Shown)

SECTION B-B
(Pipe Opening Shown)

DIMENSIONAL AND REINFORCEMENT DETAILS

DIMENSIONAL AND REINFORCEMENT DETAILS

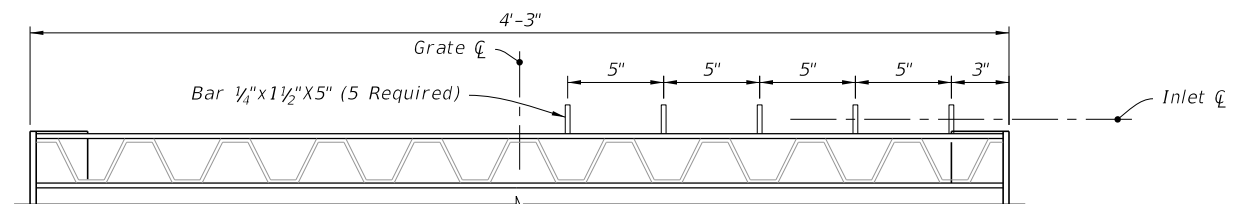
8/28/2020 1:32:55 PM

LAST REVISION	DESCRIPTION:
11/01/20	

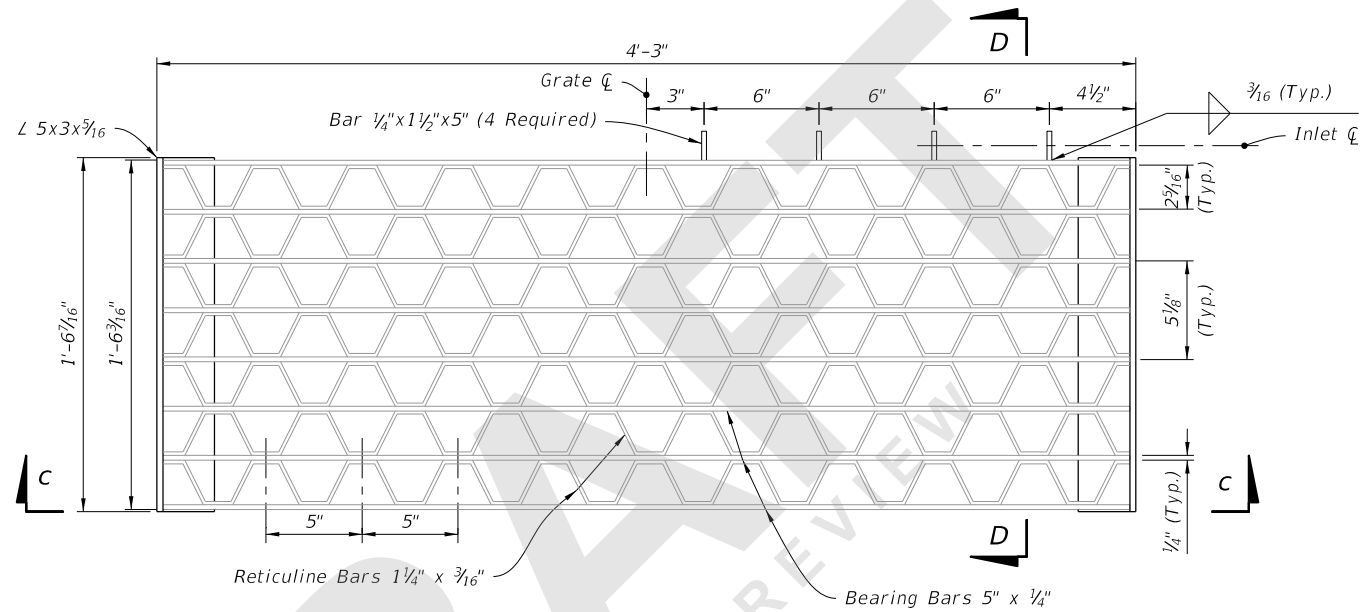
FY 2021-22
STANDARD PLANS

GUTTER INLET TYPE V

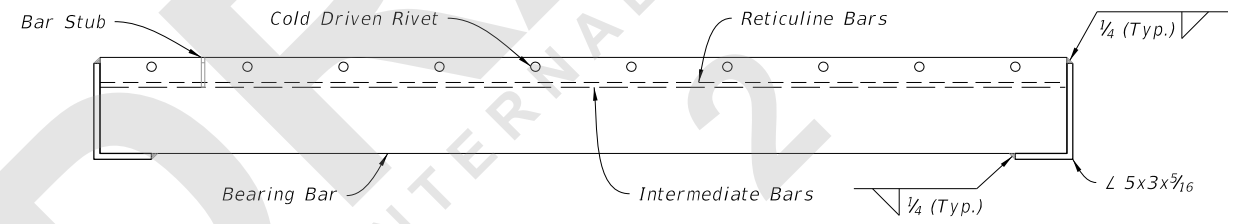
INDEX	SHEET
425-041	2 of 4



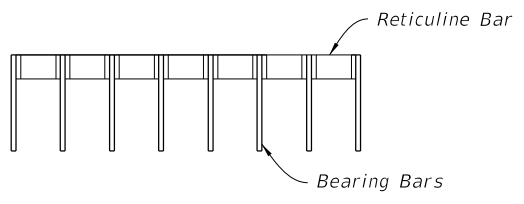
OPTIONAL BAR SPACING



PLAN



SECTION C-C



SECTION D-D

RETICULINE GRATE DETAIL

(Two Grates Required per Inlet)

8/28/2020 1:32:59 PM

STEEL GRATE DETAILS

LAST REVISION	11/01/20	REVISION	DESCRIPTION:
---------------	----------	----------	--------------

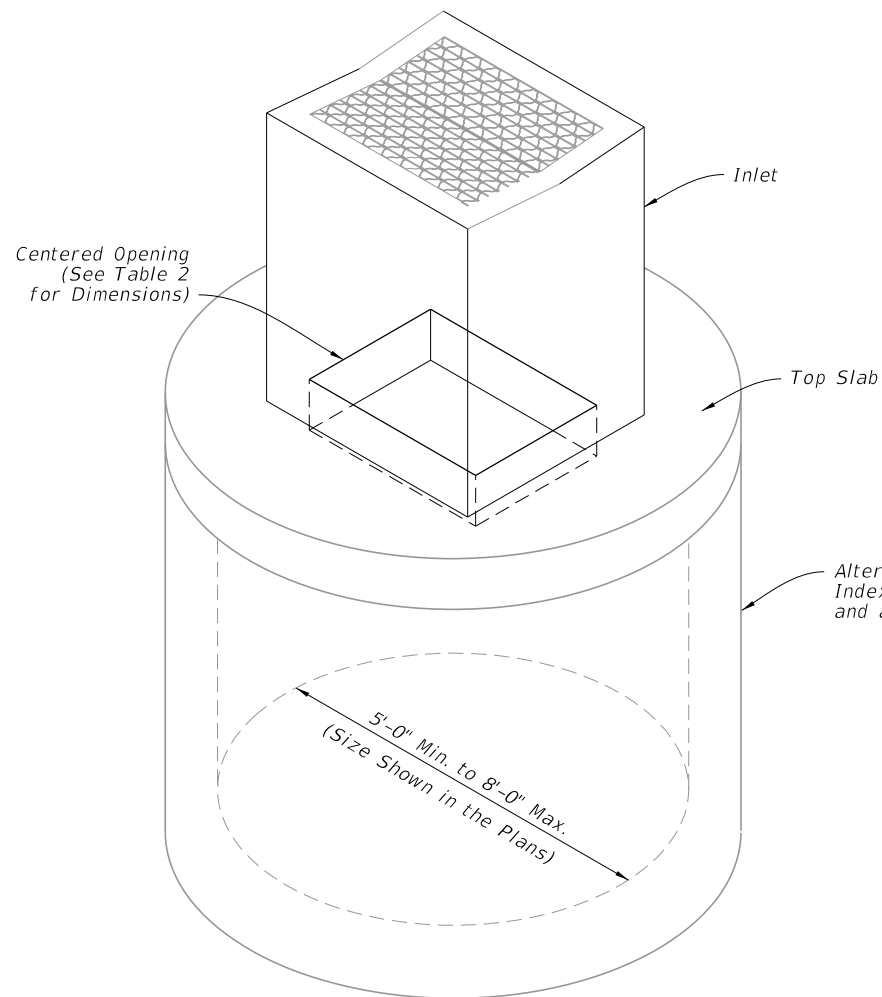


FY 2021-22
STANDARD PLANS

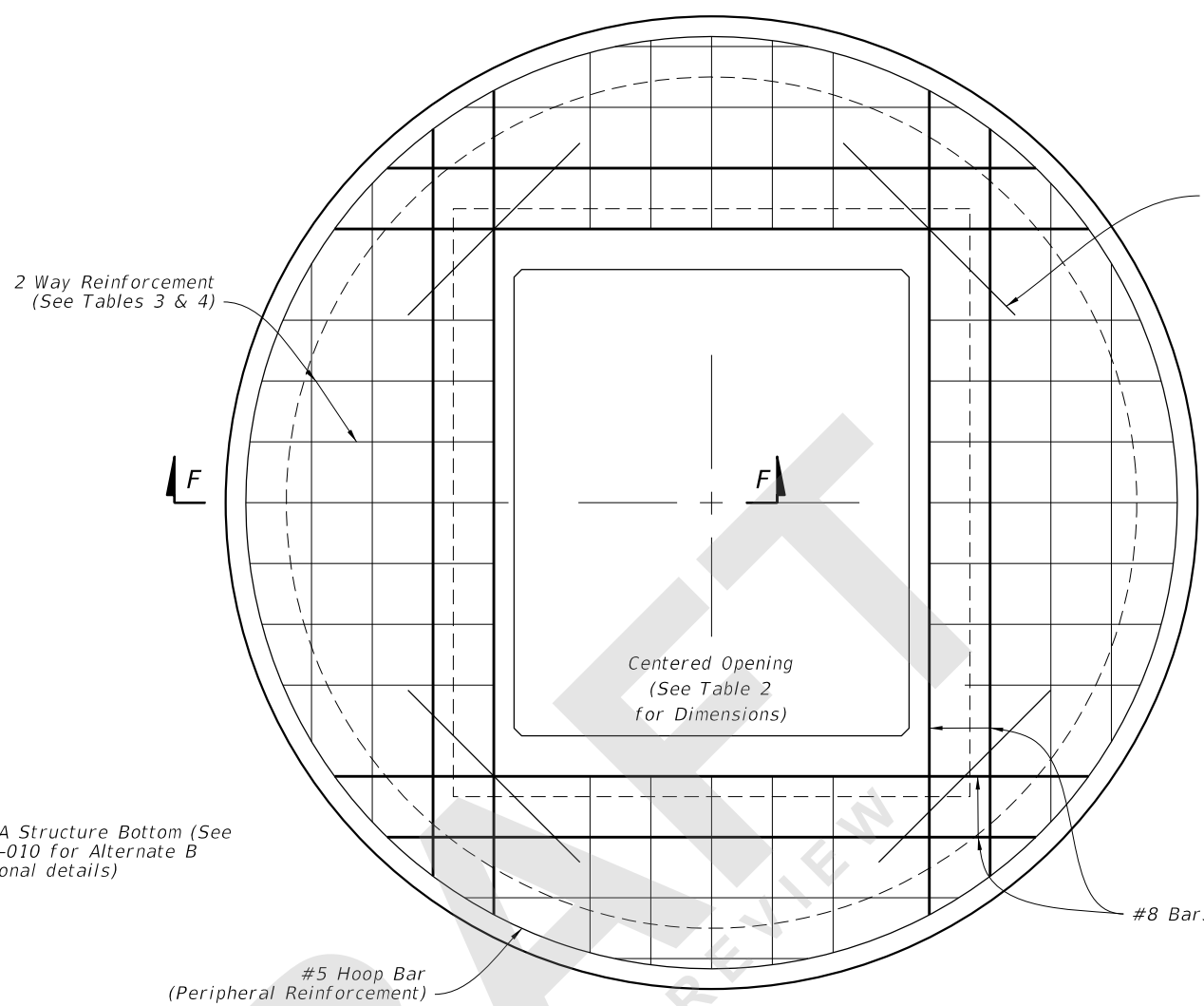
GUTTER INLET TYPE V

INDEX
425-041

SHEET
3 of 4

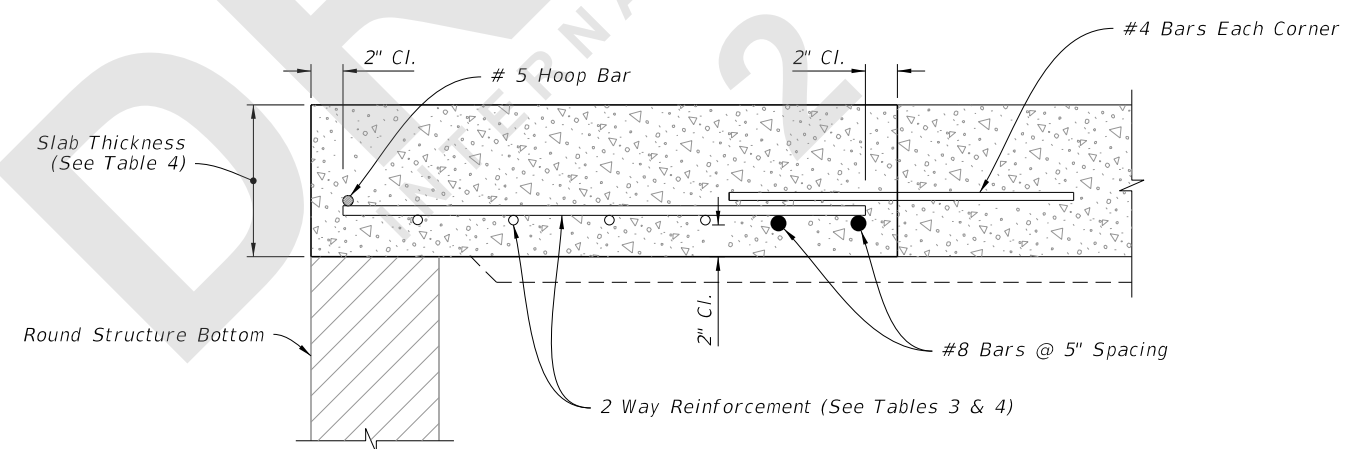


DIAMETER	OPENING SIZE	
	Min.	Max.
5'-0" to 8'-0"	2'-11" x 4'-0"	3'-3" x 3'-10"



SCHEDULE	GRADE 60 (BAR) OR 65 KSI & 70 KSI (WIRE FABRIC) In. ² /ft.
A	0.20
B	0.24
C	0.37
D	0.53
E	0.73
F	1.06
G	1.45

STRUCTURE DEPTH	SLAB THICKNESS	REINFORCING (2 WAY) SCHEDULE
SIZE: 5'-0"		
≥0.5' < 30'	9½"	C
30' < 40'	9½"	D
SIZE: 6'-0"		
0.5' < 8'	9½"	B
8' < 18'	9½"	C
18' < 30'	9½"	D
30' < 37'	9½"	E
37' < 40'	9½"	G
SIZE: 8'-0"		
≥0.5' < 9'	11½"	C
9' < 15'	11½"	D
15' < 23'	11½"	E
23' < 33'	11½"	E
33' < 40'	11½"	G



SECTION F-F

ISOMETRIC VIEW

TOP SLAB REINFORCEMENT DETAILS

ALTERNATE A STRUCTURE BOTTOM - TOP SLAB DETAILS

8/28/2020 1:33:02 PM

LAST REVISION	DESCRIPTION:
11/01/19	