
Index 102-680 Haul Road Crossing

ORIGINATION

Date: May 26, 2020

Name: Derwood Sheppard & Olivia Townsend

Phone: 850-414-4334

Email: Derwood.Sheppard@dot.state.fl.us or Olivia.Townsend@dot.state.fl.us

COMMENTARY

New Index. Previously included within *Index 102-606*, Sheet 4.

COMMENTS AND RESPONSES

BLACK = Internal Review Comments **RED** = Standard Plans Response

Name: David Skrelunas

Date: August 20, 2020

COMMENT: Haul Route Index, should there be a continuous white stripe from the stop bar back for at least 50 feet so drivers do not try to pass.

RESPONSE: *Temporary Markings are “optional” per the MUTCD. The usage will be evaluated for possible future inclusion in the Index.*

No Change, at this time.

Date: 8/23/2020

Name: K. C. Jones

Date: August 21, 2020

COMMENT: Please consider notating the temporary traffic Signal OH height clearance from Roadway and lateral distance from haul road.

RESPONSE: *Per Specification 102, Temporary Signals are to be installed “as shown in the Plans”. Specific location and height would depend on device used (i.e., span wire vs. portable) and should be used in accordance with applicable Standards, Specifications, and/or Manufacturer requirements.*

No Change

Date: 8/23/2020

Name: Jeffery Cicerello

Date: August 21, 2020

COMMENT: Consider developing an Index for a x-ing controlled by flagmen in lieu of a signal along with guidance on posted speeds, geometry and other factors that may influence SSD when locating x-ings and in the selection of traffic control for x-ings.

RESPONSE: *A flagger controlled "option" is included in the MUTCD TA-14. The option will be evaluated for possible future inclusion in the Index.*

No Change, at this time.

Date: 8/23/2020

Name: D5

Date: August 21, 2020

COMMENT:

1. Sheet 1: How was the 80-150 ft. distance determined?

RESPONSE: *The original intent was to match the signal to stop-bar dimension used within Index 102-606; however, after additional consideration the detail will be modified to more closely match the MUTCD.*

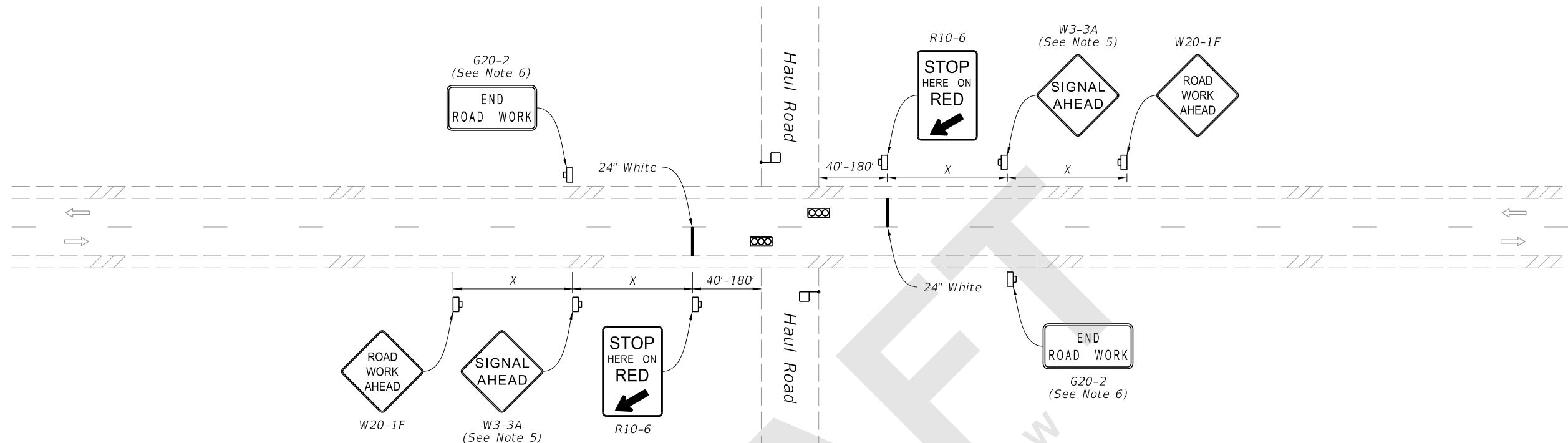
Change Made: *The location of the stop-bar from the signal has been changed to 40'-180' to match the MUTCD.*

2. Sheet 1: Signal Ahead sign callout note incorrect. Correct to "See Note 5"

RESPONSE: *Agreed*

Change Made: *Call-out corrected.*

Date: 8/23/2020



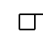



(Two-Lane Roadway Shown, Multilane Roadway Similar)


NOTES:

1. This Index is intended for two-way and multilane roadways, excluding limited access facilities, with haul roads that intersect the roadway.
2. District Traffic Operations Engineer must approve the installation and timing of temporary signals prior to beginning of work. Adjust timing based on changing field conditions as approved by the Worksite Traffic Supervisor. Obtain approval from the District Traffic Operations Engineer for any timing changes that are either reoccurring or last longer than 24 hours.
3. X=Work Zone Sign Distance, see Index 102-600 for "X" values.
4. Use Type III Barricades to block haul road access when the haul road is not in operation and a flagger/signal operator is not on duty, except when the haul road is an existing properly marked road.
5. Optionally, use "Signal Ahead" signs with symbols (W3-3) instead of "Signal Ahead" signs with text (W3-3A).
6. The "End Road Work" signs (G20-2) may be omitted when the work zone is in place for 24 hours or less.
7. Optionally, use temporary traffic signals for control of the haul road.

SYMBOLS:

-  Temporary Traffic Signal
-  Work Zone Sign
-  Flagger
-  Lane Identification and Direction of Traffic

8/26/2020 7:31:35 AM

LAST REVISION 11/01/20	REVISION	DESCRIPTION:	 FY 2021-22 STANDARD PLANS	HAUL ROAD CROSSING	INDEX 102-680	SHEET 1 of 1
---------------------------	----------	--------------	--	--------------------	------------------	-----------------