

---

## Index 102-607

# Two-Lane, Two-Way, Mobile Operation, Work on Shoulder, Work Within the Travel Way

### ORIGINATION

**Date:** May 26, 2020

**Name:** Derwood Sheppard & Olivia Townsend

**Phone:** 850-414-4334

**Email:** [Derwood.Sheppard@dot.state.fl.us](mailto:Derwood.Sheppard@dot.state.fl.us) or [Olivia.Townsend@dot.state.fl.us](mailto:Olivia.Townsend@dot.state.fl.us)

### COMMENTARY

Sheet 1: Revised 'Work on Shoulder' Detail and Consolidated with 102-619; Revised 'Work in Travel Way' Detail; Revised Notes; Updated Symbols; Renamed Index.

Sheet 2: Revised and Added Details from 102-619 as Sheet 2; Updated Symbols; Renamed Index.

### COMMENTS AND RESPONSES

**BLACK** = Internal Review Comments    **RED** = Standard Plans Response

**Name:** Saud Khan

**Date:** August 20, 2020

**COMMENT:** Sheet 1/2. General Notes #2. Line 4. – Instead of .... Arrow Boards.... use Temporary Portable Arrow Boards. – This clearly distinguishes between truck mounted boards and portable boards that can be towed by trucks.

**RESPONSE:** *The intent of the note is to prohibit the use of an arrow board in combination with a truck mounted changeable message sign, regardless to if it is truck mounted or not. The note will be clarified to better state the intent.*

**Change Made:** *Reworded sentence #2; “Vehicle mounted changeable message signs may be used in lieu of truck mounted static signs and arrow boards”. Reworded sentence #4; “Do not use arrow boards in combination with truck mounted changeable message signs...”*

*Date: 8/19/2020*

**Name:** D5

**Date:** August 21, 2020

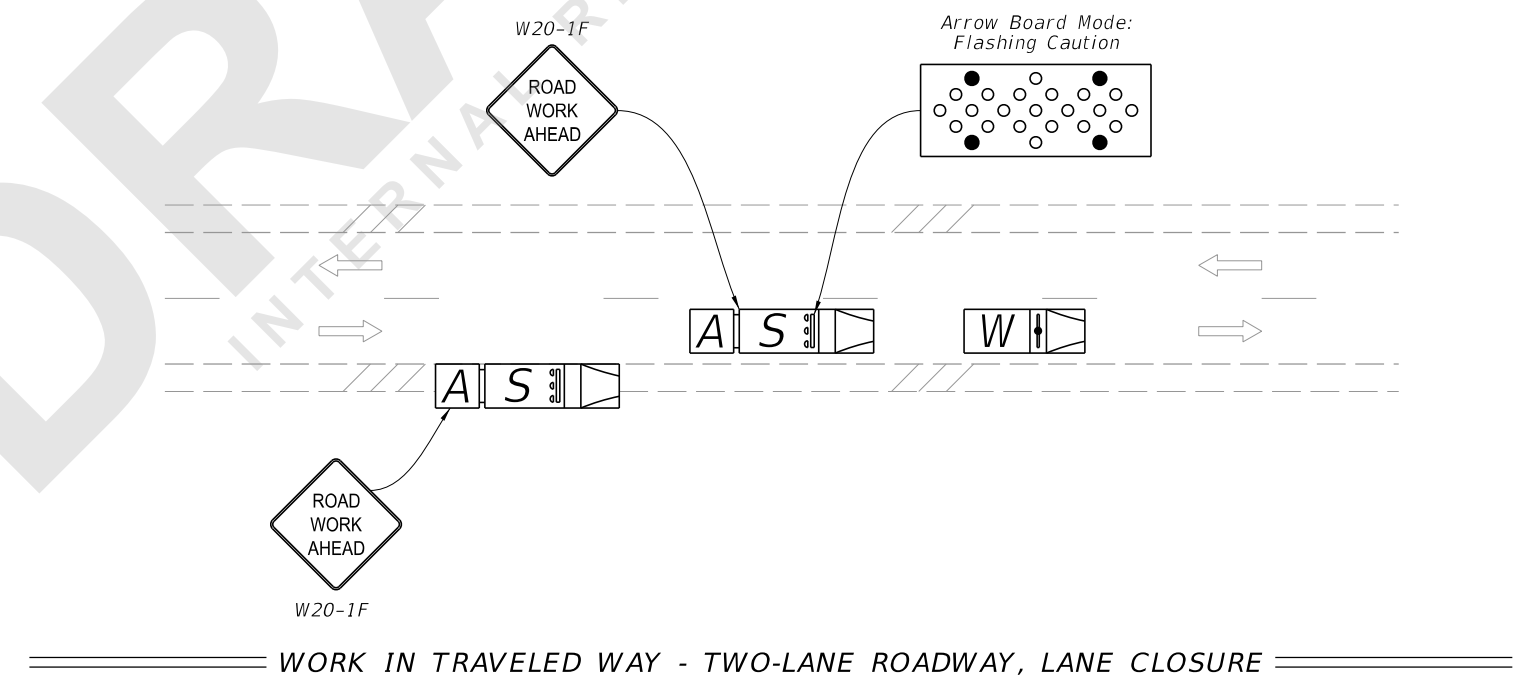
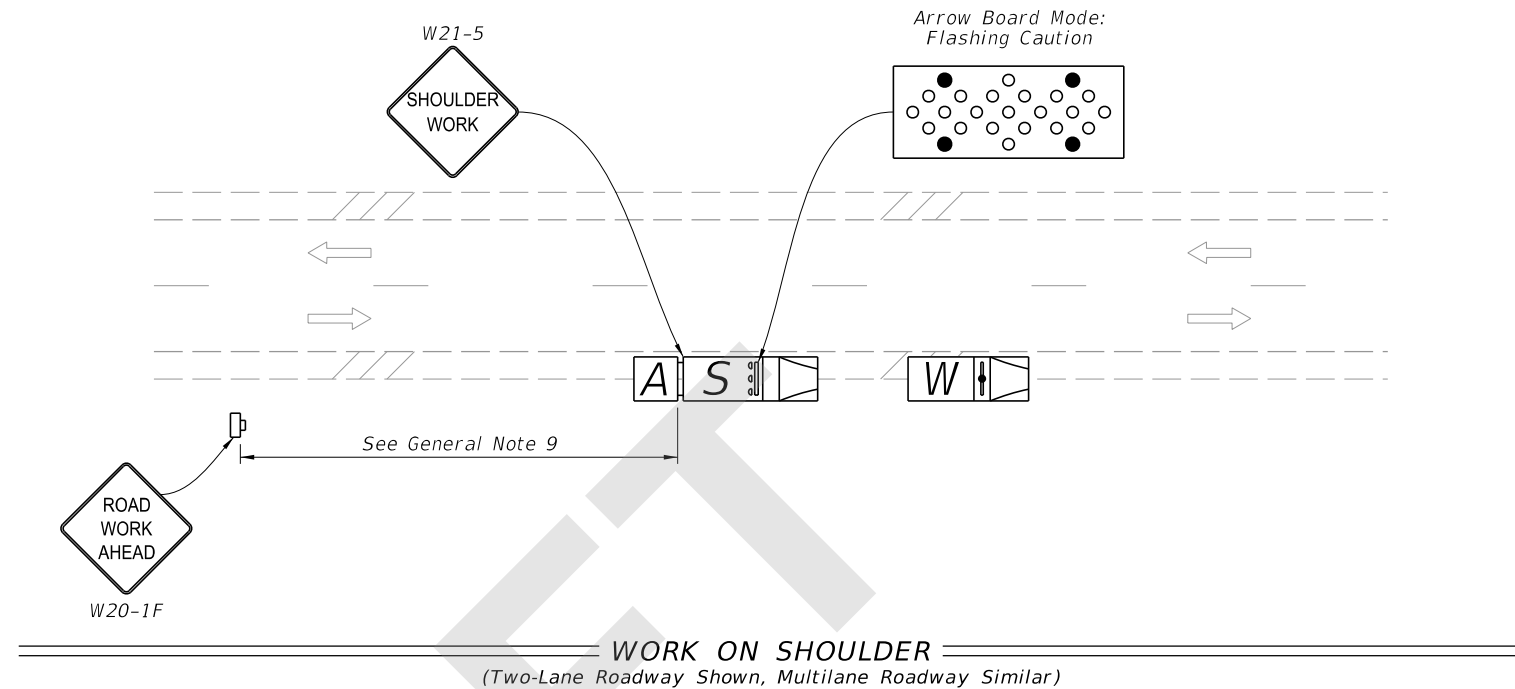
**COMMENT:** Sheet 1, General Note 8 – What determined the acceptable speeds for these operations? One-half the speed on non-limited access facilities may be a concern.

**RESPONSE:** *The State Design and Construction Offices are unaware of any safety issues that have arisen from this policy. This policy has been in place since the **1992 Design Standards.***  
**No Change**

*Date: 8/23/2020*

**GENERAL NOTES:**

1. This Index applies to two-lane, two-way and multilane roadways with work that requires a moving operation.
2. Mount vehicle-mounted signs with the bottom of the sign at a minimum height of 48 inches above the pavement. Vehicle mounted changeable message signs may be used in lieu of truck mounted static signs and arrow boards. Ensure changeable message signs flash alternately to read "Left or Right Lane" or "Two Left or Two Right Lanes", "Closed Ahead", and the arrow symbol. Do not use arrow boards in combination with truck mounted changeable message signs or obscure boards with equipment, supplies, signs, or enclosure. Cover or turn sign legends from view when work is not in progress.
3. For multilane roadways with curb and no paved shoulder, omit the shadow vehicle that would have been used on the paved shoulder. In such instances, the warning sign should be mounted on the shadow vehicle farthest from the work vehicle.
4. Where work activities within 2' of the edge of travel way are incidental (i.e., Mowing, Litter Removal), the Engineer may delete requirements for signs and the Shadow vehicle on the shoulder provided vehicles in the work area have high-intensity rotating, flashing, oscillating, or strobe lights operating.
5. Minimize the longitudinal spacing between vehicles to deter road users from driving in between.
6. Use inverted plan of the illustrations for work on left side of roadways.
7. Ensure that all vehicles in the mobile operation convoy have functional two-way communication.
8. If the speed of the mobile operation exceeds the existing posted speed limit on limited access roadways and one half the existing posted speed limit on other roadways, the Engineer may delete requirements for shadow vehicles and attenuators. In such situations, mount arrow board and sign on the work vehicle.
9. The distance between the advance warning sign and the work location should not exceed 5 miles.



**SYMBOLS:**

- Lane Identification and Direction of Traffic
- Truck/Trailer Mounted Attenuator (TMA)
- Work Vehicle With Warning Lights
- Shadow (S) Vehicle With Warning Lights And Arrow Board
- Work Zone Sign

8/27/2020 8:34:56 AM

LAST REVISION 11/01/20	REVISION	DESCRIPTION:		FY 2021-22 STANDARD PLANS	MOBILE OPERATIONS	INDEX 102-607	SHEET 1 of 2
---------------------------	----------	--------------	--	------------------------------	-------------------	------------------	-----------------

