

ORIGINATION FORM

Proposed Revisions to a Standard Plans Index
(Please provide all information – Incomplete forms will be returned)

Contact Information:

Date: May 13, 2019
Originator: Cheryl Hudson
Phone: (850) 414-5332
Email: cheryl.hudson@dot.state.fl.us

Standard Plans:

Index Number: 649-031
Sheet Number (s): 2 & 5
Index Title: Signing for Motorist Services

Summary of the changes:

Sheet 2, Change Note 3: Half-height anchor 'jam' nut.
Sheet 5: Clarify that luminaire arms are to be galvanized steel not aluminum.

Commentary / Background:

To follow spec 649 (in Industry review): For clarity the bottom nut is called an anchor nut. Common term for half-height nut is 'jam' nut which can be the top or bottom depending on the use. Only allow for bottom anchor nut for this application.

Other Affected Offices / Documents: (Provide name of responsible personnel)

- | Yes | No | |
|--------------------------|-------------------------------------|---|
| <input type="checkbox"/> | <input checked="" type="checkbox"/> | Other Standard Plans – |
| <input type="checkbox"/> | <input checked="" type="checkbox"/> | FDOT Design Manual – |
| <input type="checkbox"/> | <input checked="" type="checkbox"/> | Basis of Estimates Manual – |
| <input type="checkbox"/> | <input checked="" type="checkbox"/> | Standard Specifications – Cheryl Hudson |
| <input type="checkbox"/> | <input checked="" type="checkbox"/> | Approved Product List – |
| <input type="checkbox"/> | <input checked="" type="checkbox"/> | Construction – |
| <input type="checkbox"/> | <input checked="" type="checkbox"/> | Maintenance – |

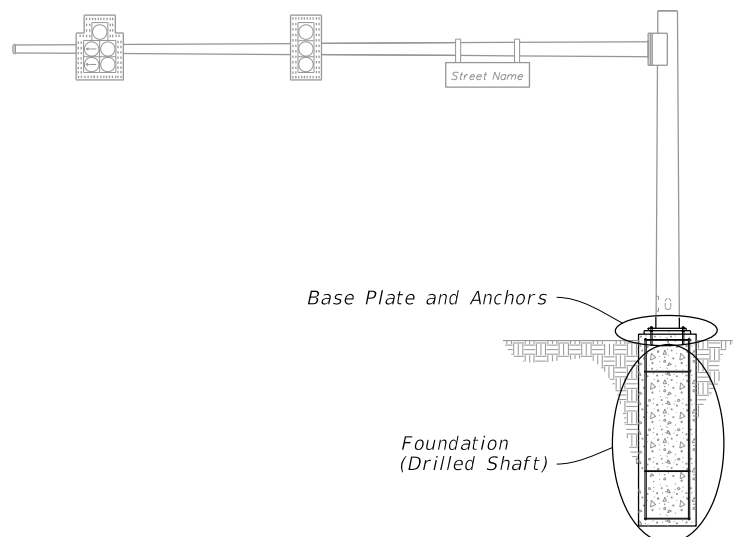
Origination Package Includes: (Email or hand deliver package to Derwood Sheppard)

- | Yes | N/A | |
|-------------------------------------|--------------------------|---|
| <input checked="" type="checkbox"/> | <input type="checkbox"/> | Redline Mark-ups |
| <input type="checkbox"/> | <input type="checkbox"/> | Proposed Standard Plan Instructions (SPI) |
| <input type="checkbox"/> | <input type="checkbox"/> | Revised SPI |
| <input type="checkbox"/> | <input type="checkbox"/> | Other Support Documents |

Implementation:

- Design Bulletin (Interim) DCE Memo Program Mgmt. Bulletin FY-Standard Plans (Next Release)

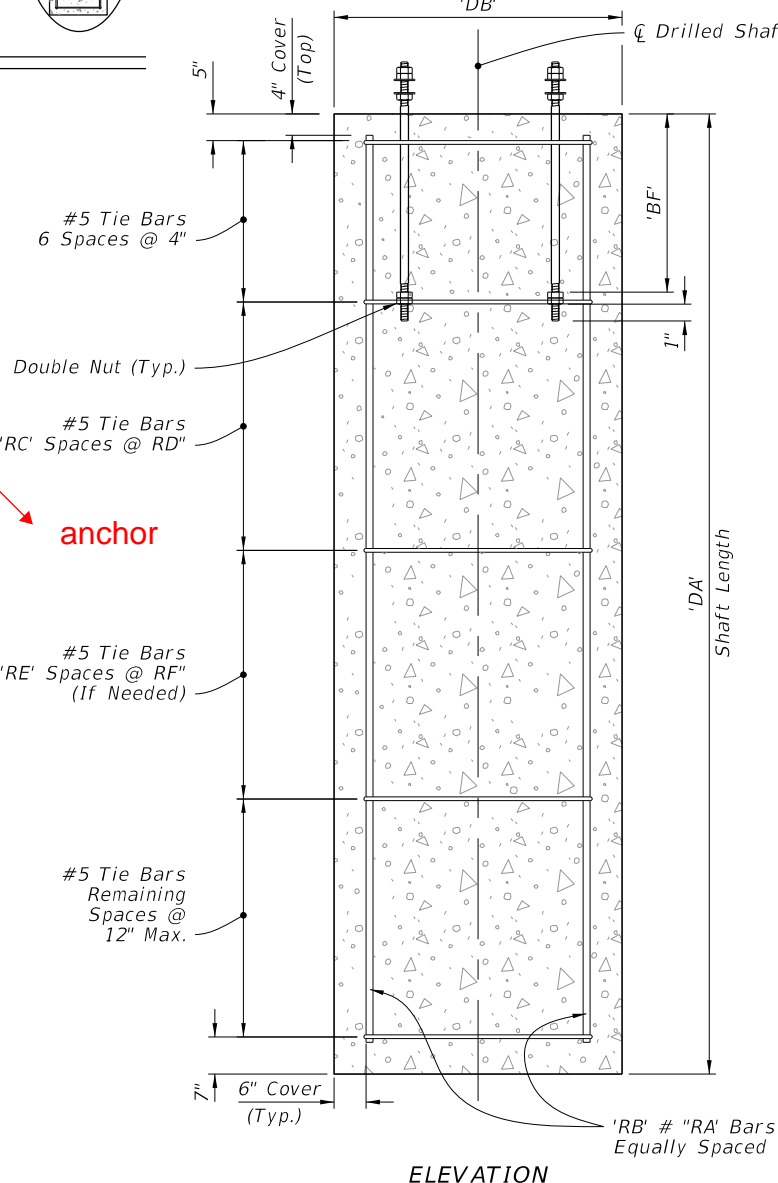
Contact the Roadway Design Office for assistance in completing this form



MAST ARM ASSEMBLY

NOTES:

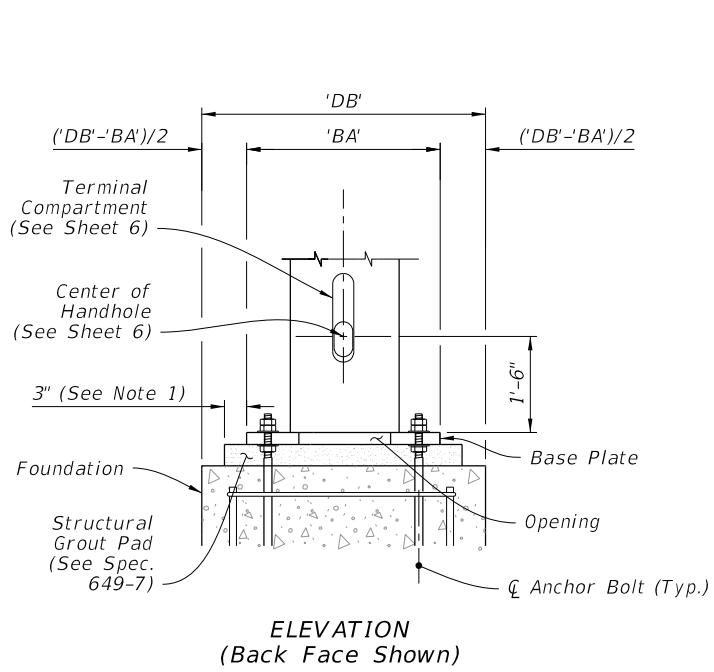
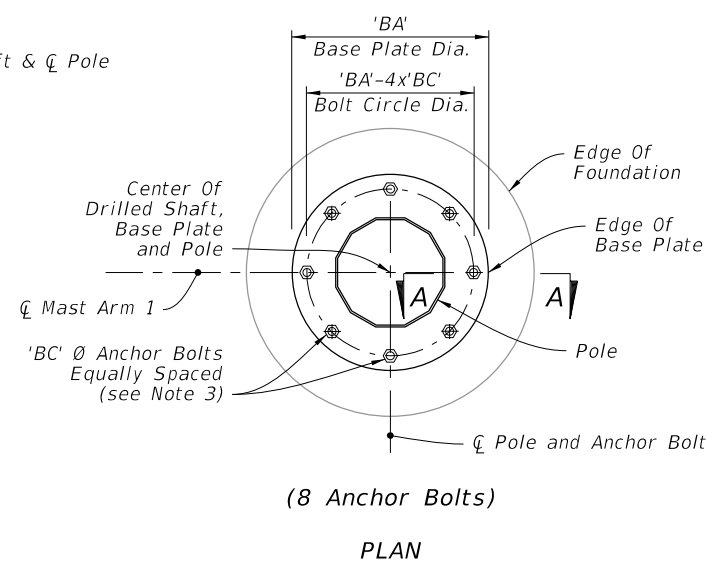
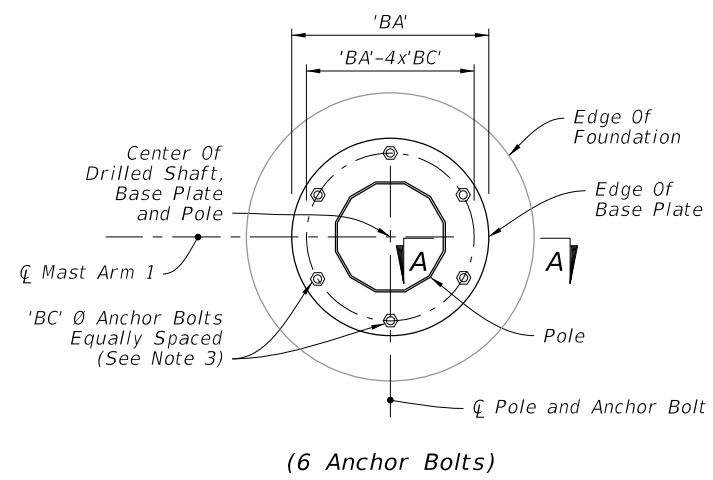
1. The Structural Grout Pad diameter may be reduced where the footprint of the Grout Pad does not provide adequate clearance for the sidewalk and/or accessibility considerations.
2. See Index 649-030 and the plans for actual quantity of bolts in the Base Plate Connection.
3. The bottom hex nut of the Double Nuts shown in Section A-A may be substituted by a half-height 'jam' nut. Provide individual nut covers (not shown) for each bolt.



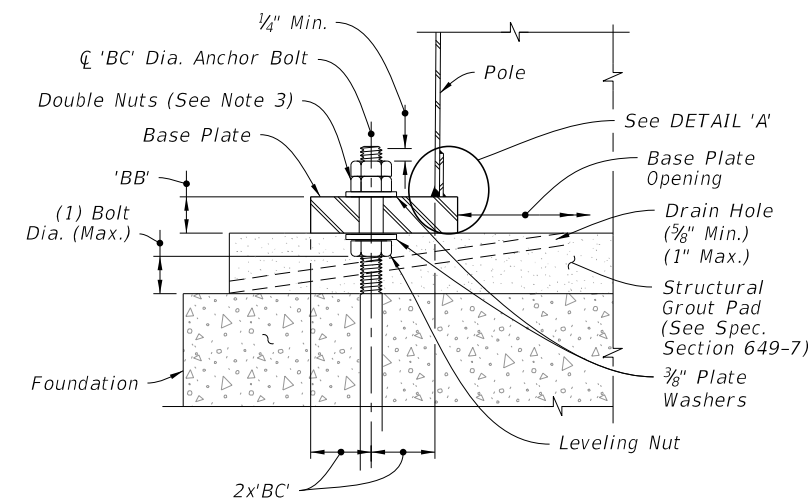
PLAN

ELEVATION

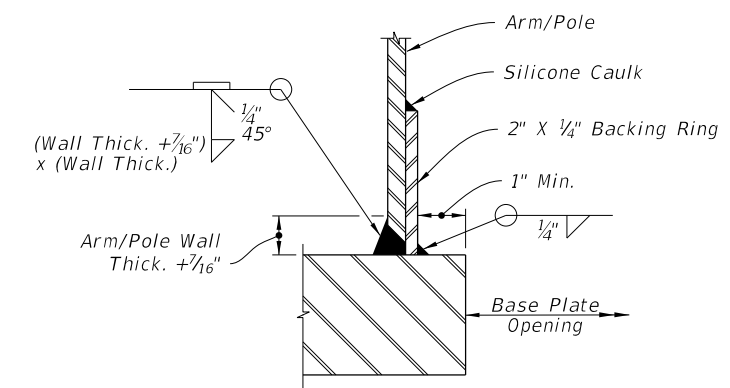
FOUNDATION



BASE PLATE CONNECTION



SECTION A-A



JOINT WELD DETAIL

DETAIL 'A'

FOUNDATION AND BASE PLATE DETAILS

10/18/2018 12:31:18 PM

LAST REVISION	DESCRIPTION:
11/01/18	11/01/18
11/01/19	

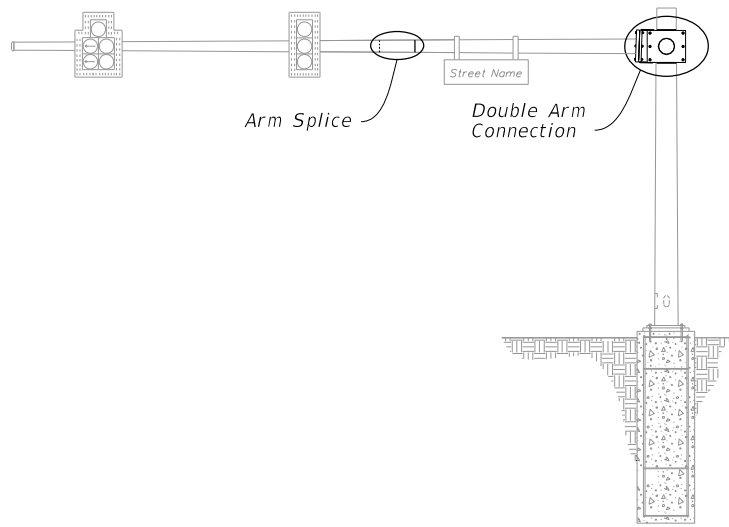


FY 2019-20
STANDARD PLANS

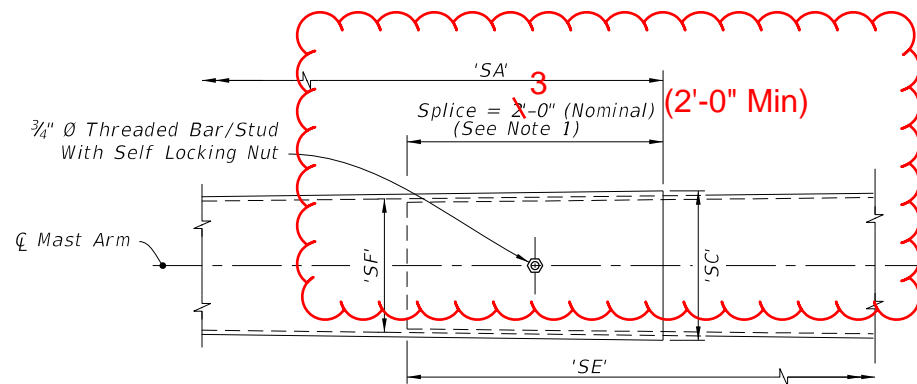
MAST ARM ASSEMBLIES

INDEX
649-031

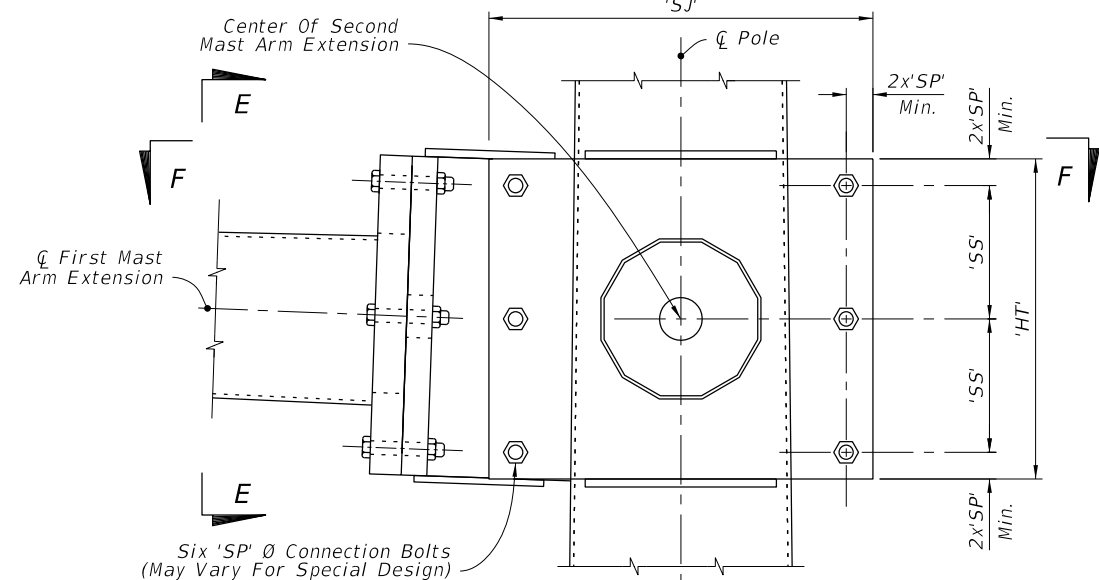
SHEET
2 of 6



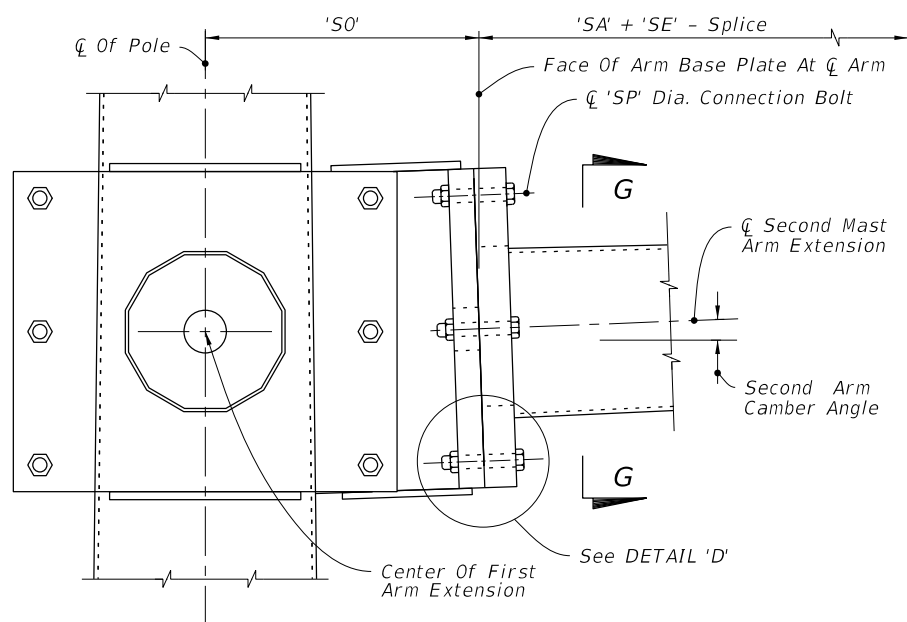
MAST ARM ASSEMBLY



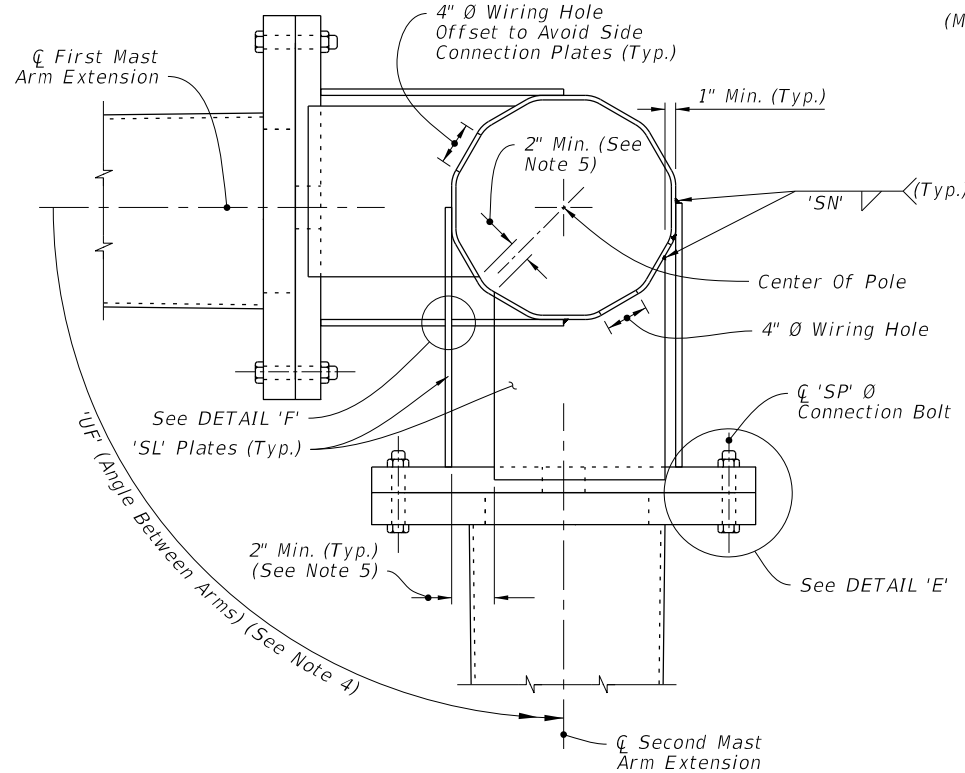
ARM SPLICE



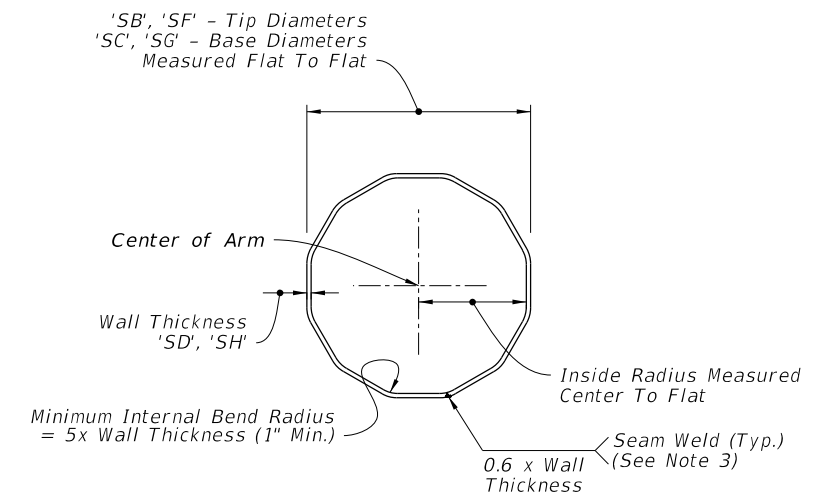
DOUBLE ARM CONNECTION



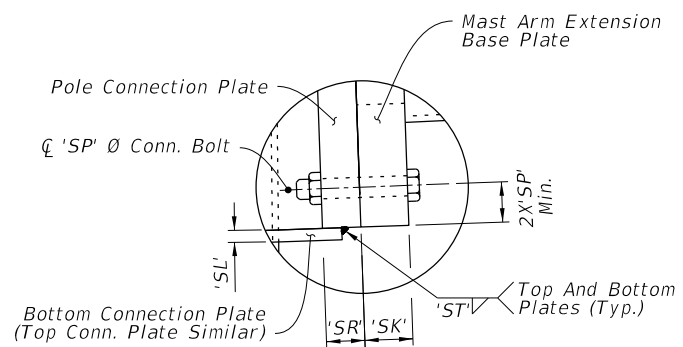
SECTION E-E



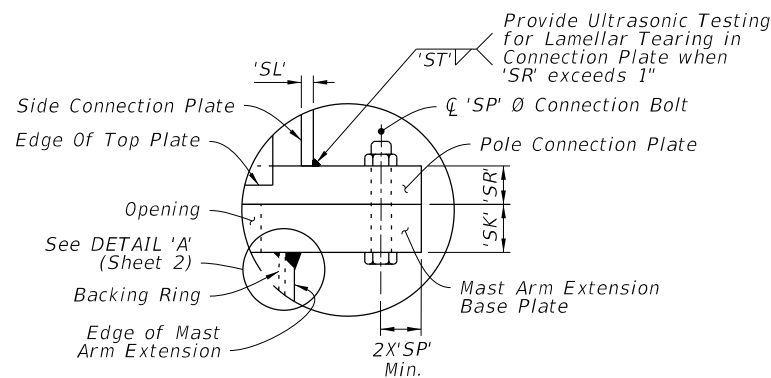
SECTION F-F



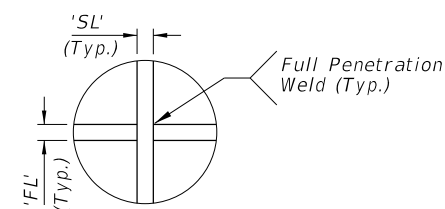
SECTION G-G



DETAIL 'D'



DETAIL 'E'



DETAIL 'F'

NOTE:

1. Install the 'Slip Joint' splice with a tight fit and no change in the Mast Arm taper due to the splice.
2. Details shown on this sheet are for 12 sided pole sections. However, sections with more than 12 sides and round sections are permitted provided outside diameter and wall thickness are not reduced.
3. Match mark the Arm and Connection Plates to ensure proper assembly and the seam weld is in the proper location (seam located at the bottom side of the Arm).
4. 'U/F' measured counter clockwise from Q First Mast Arm Extension.
5. Adjust width of top and bottom Connection Plates to maintain minimum clearance shown.

DOUBLE ARM CONNECTIONS & SPLICE DETAILS

10/18/2018 12:31:20 PM

LAST REVISION	DESCRIPTION:
11/01/17	← 11/01/19

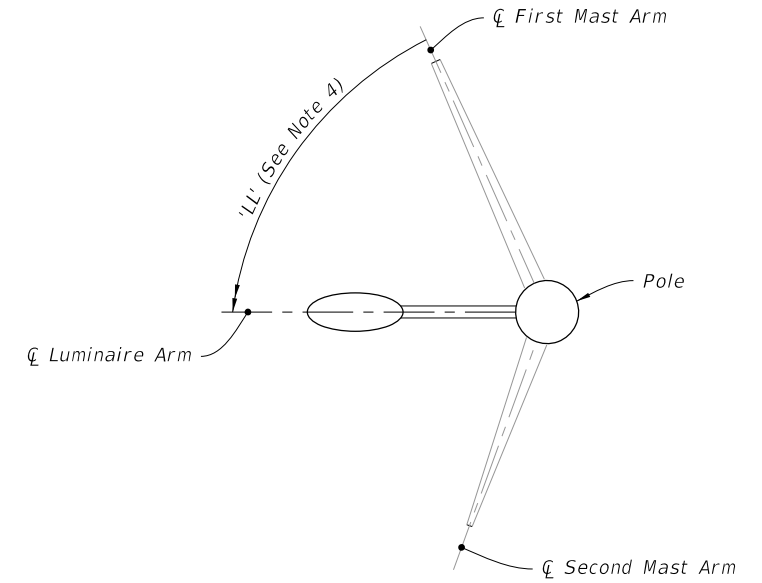
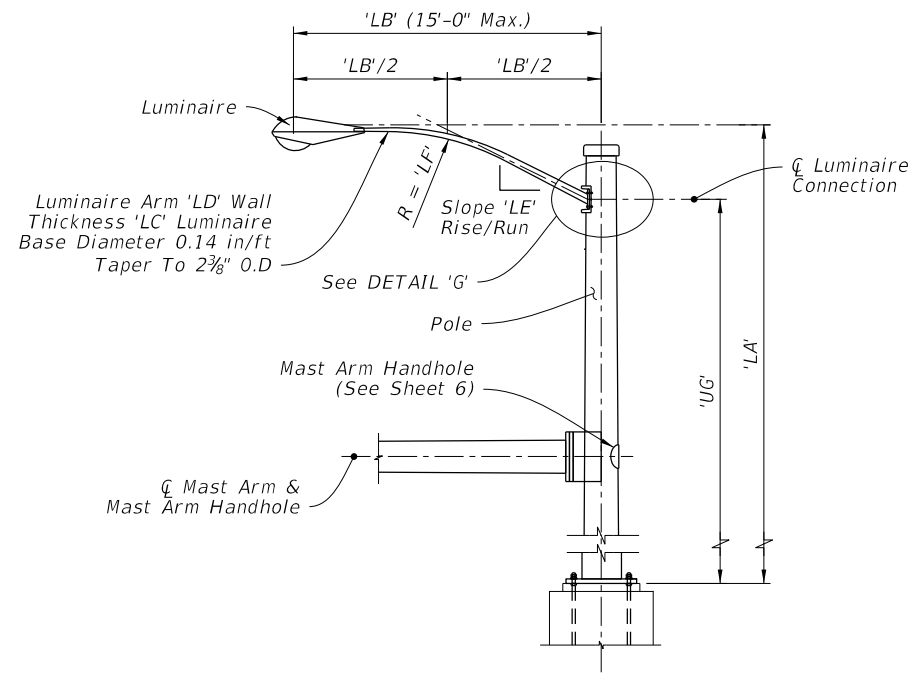
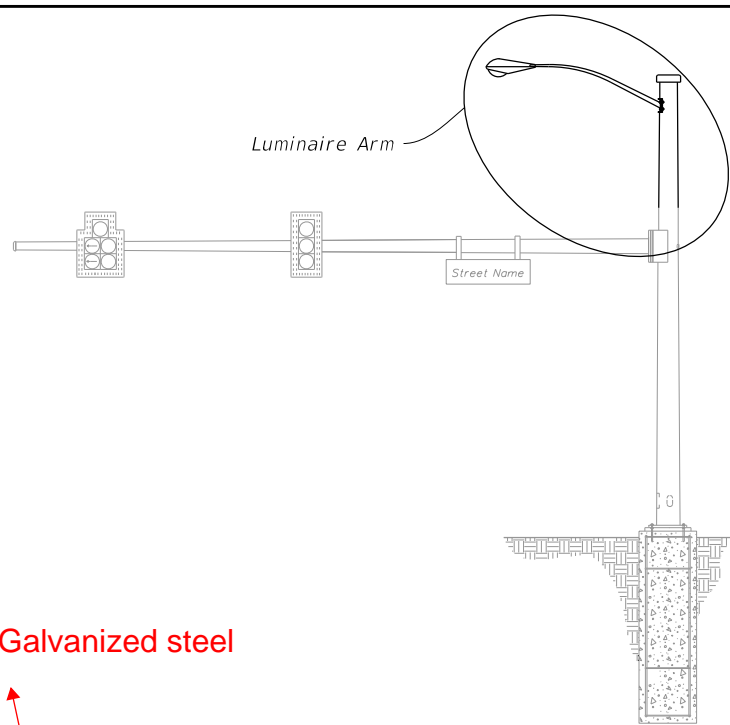


FY 2019-20
STANDARD PLANS

MAST ARM ASSEMBLIES

INDEX
649-031

SHEET
4 of 6



Galvanized steel

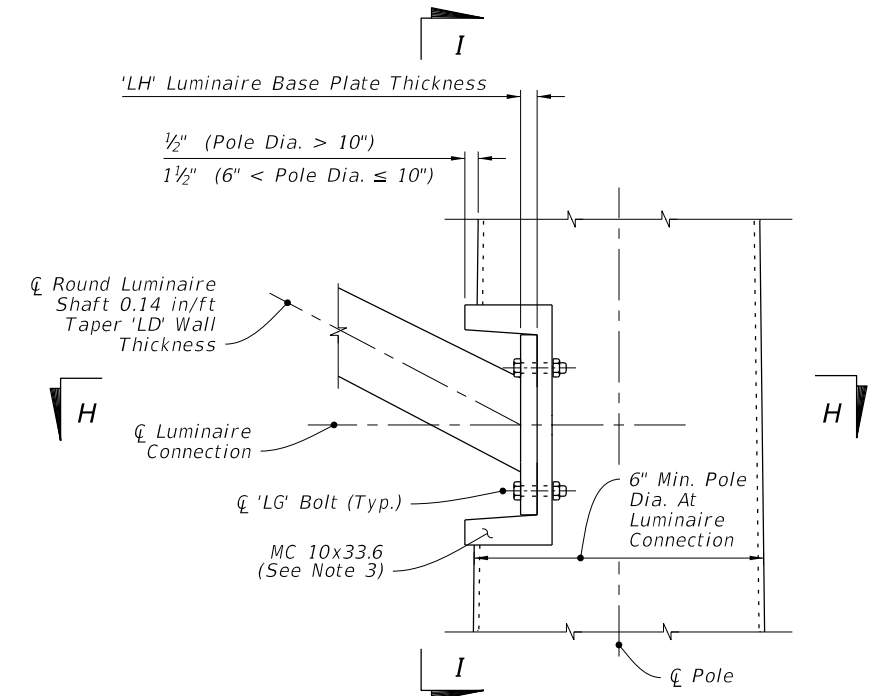
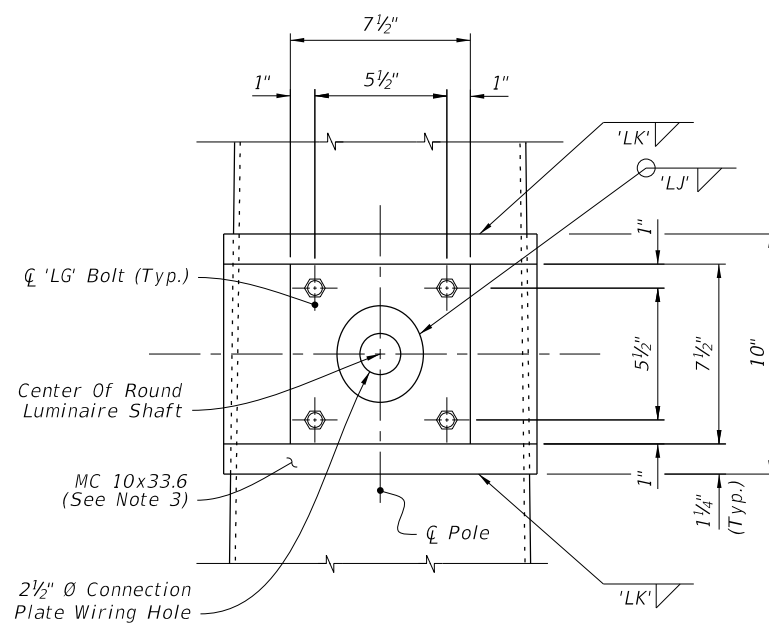
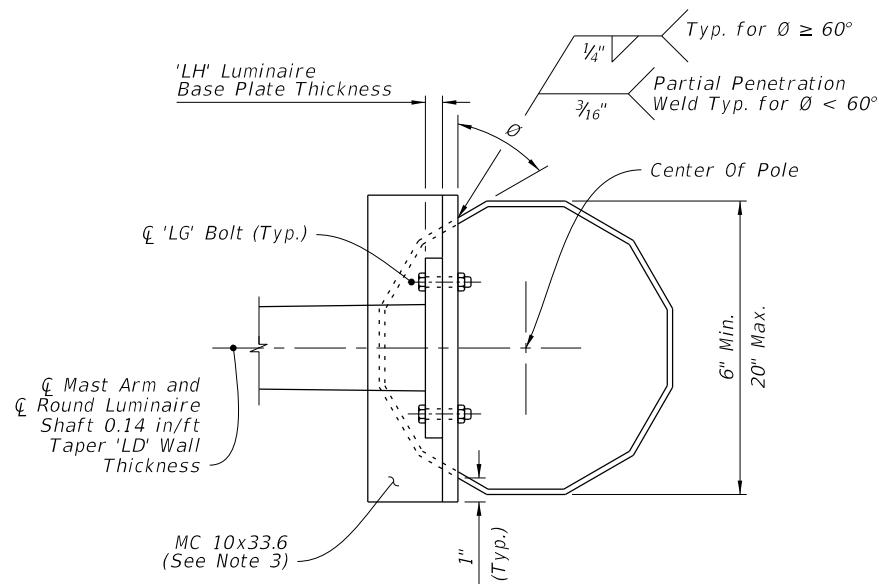
MAST ARM ASSEMBLY

LUMINAIRE ELEVATION

LUMINAIRE ORIENTATION

NOTES:

1. Luminaire type and luminaire length may be found in the Lighting Plans.
2. Align Luminaire Arm with Single Mast Arm or First Arm of Double Mast Arm unless indicated otherwise in the plans.
3. The fabricator may substitute a $\frac{1}{2}$ " thick bent plate with the same flange width, height, and length as the MC 10x33.6 Channel section.
4. 'LL' measure counter clockwise from First Mast Arm.



SECTION H-H

SECTION I-I

LUMINAIRE CONNECTION ELEVATION

DETAIL 'G'
LUMINAIRE ARM AND CONNECTION DETAILS

10/18/2018 12:31:21 PM

LAST REVISION	DESCRIPTION:
11/01/17	11/01/19

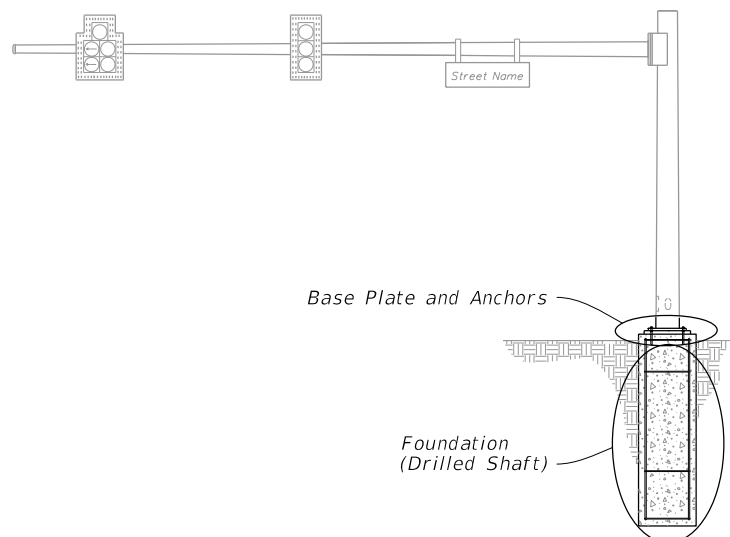


FY 2019-20
STANDARD PLANS

MAST ARM ASSEMBLIES

INDEX
649-031

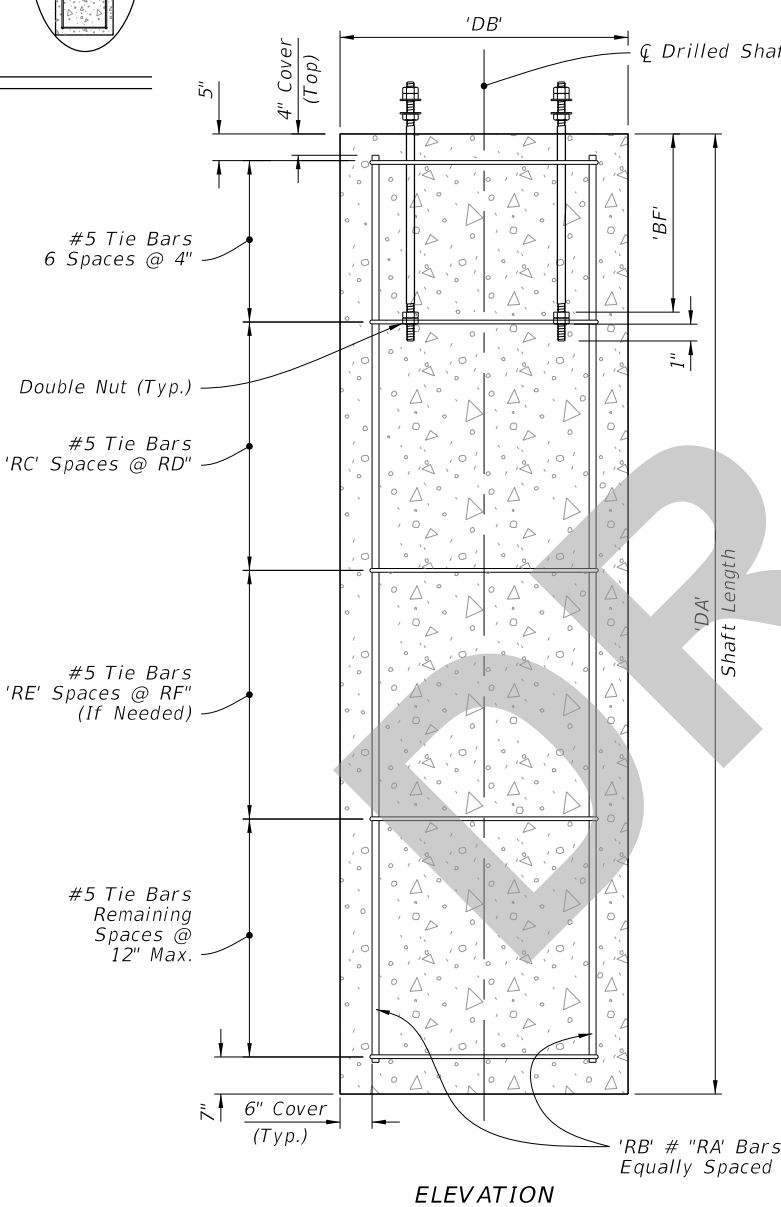
SHEET
5 of 6



MAST ARM ASSEMBLY

NOTES:

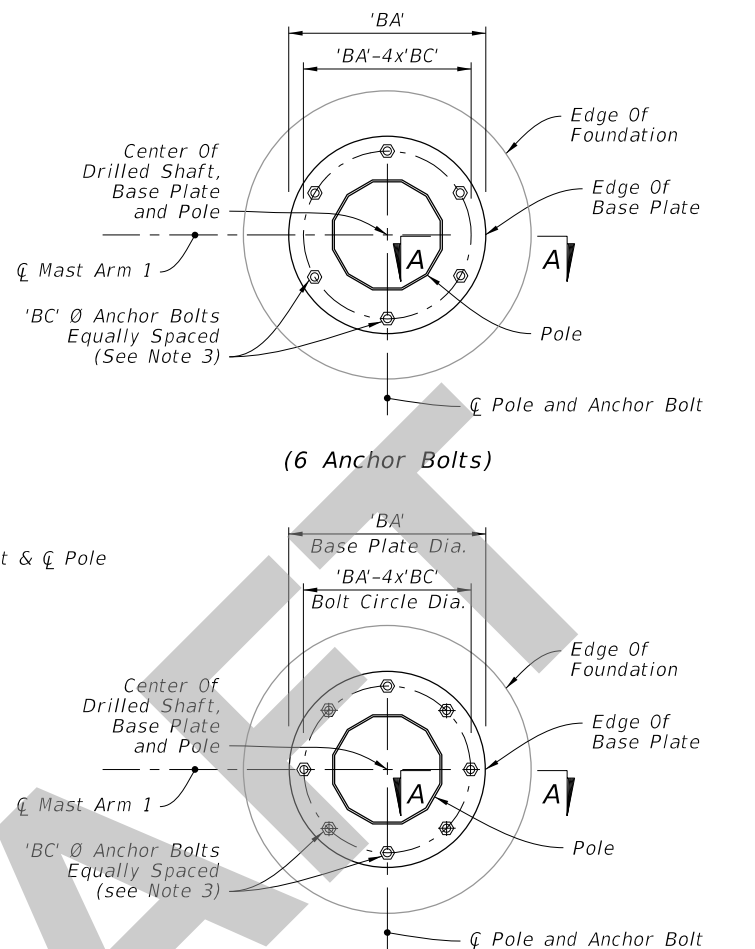
1. The Structural Grout Pad diameter may be reduced where the footprint of the Grout Pad does not provide adequate clearance for the sidewalk and/or accessibility considerations.
2. See Index 649-030 and the plans for actual quantity of bolts in the Base Plate Connection.
3. The bottom hex nut of the Double Nuts shown in Section A-A may be substituted by a half-height anchor 'jam' nut. Provide individual nut covers (not shown) for each bolt.



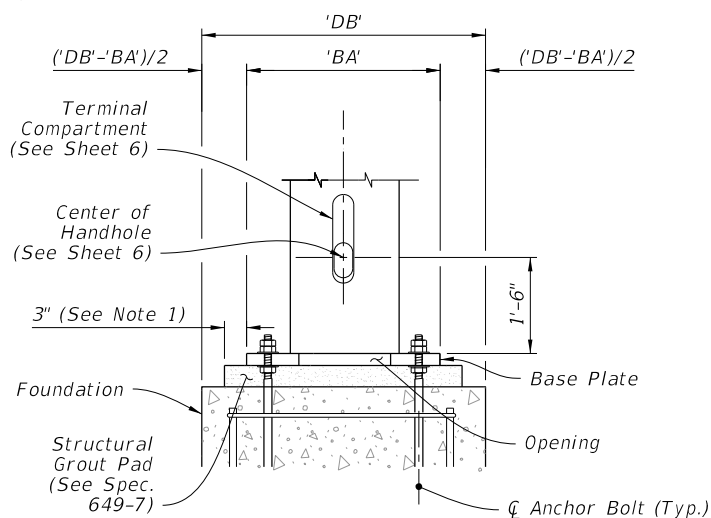
PLAN

ELEVATION

FOUNDATION

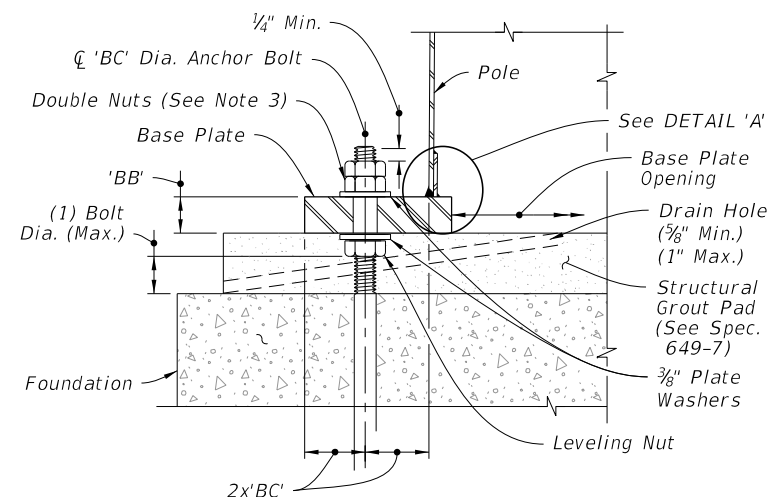


PLAN

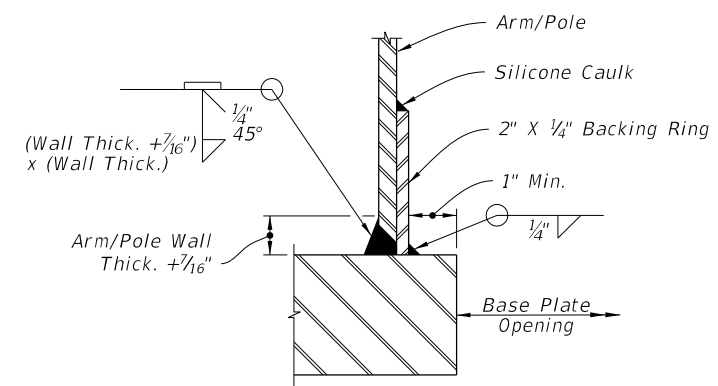


ELEVATION (Back Face Shown)

BASE PLATE CONNECTION



SECTION A-A



JOINT WELD DETAIL

DETAIL 'A'

FOUNDATION AND BASE PLATE DETAILS

8/26/2019 8:04:13 AM

LAST REVISION 11/01/19	DESCRIPTION:
---------------------------	--------------

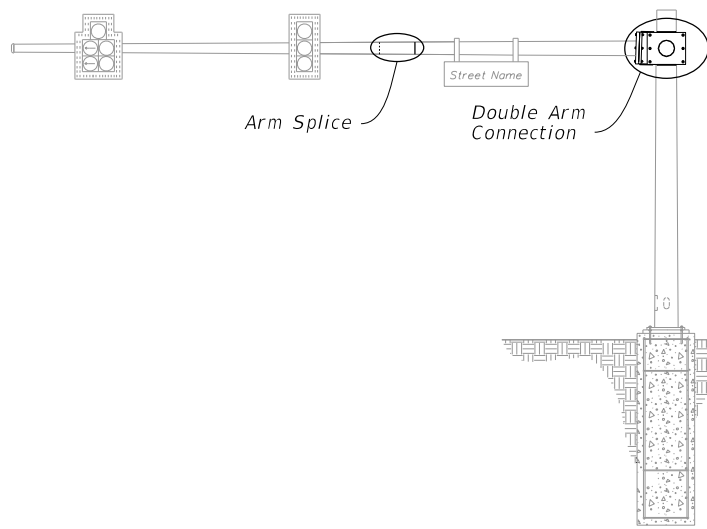


FY 2020-21
STANDARD PLANS

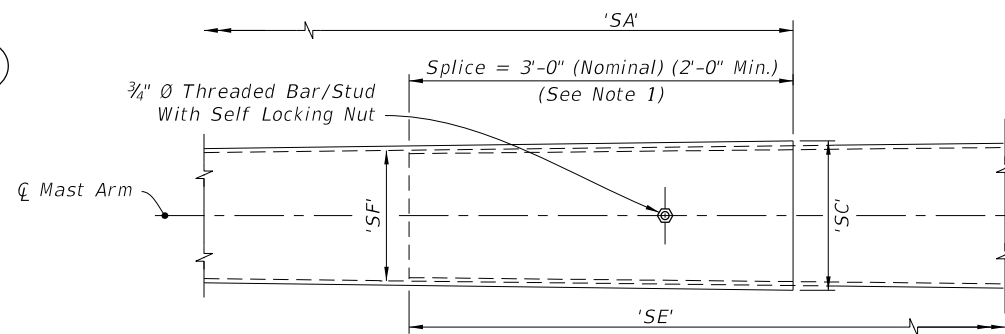
MAST ARM ASSEMBLIES

INDEX
649-031

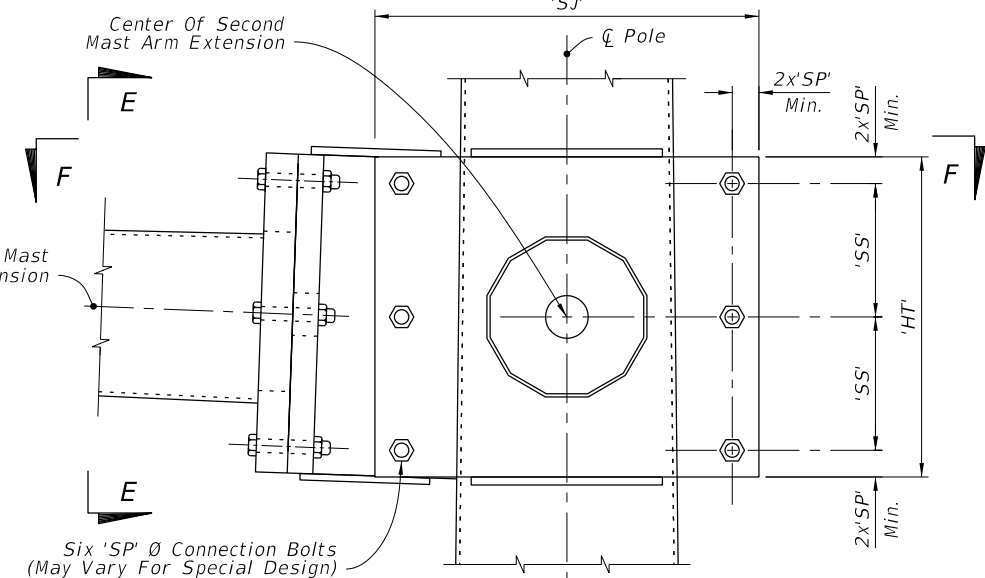
SHEET
2 of 6



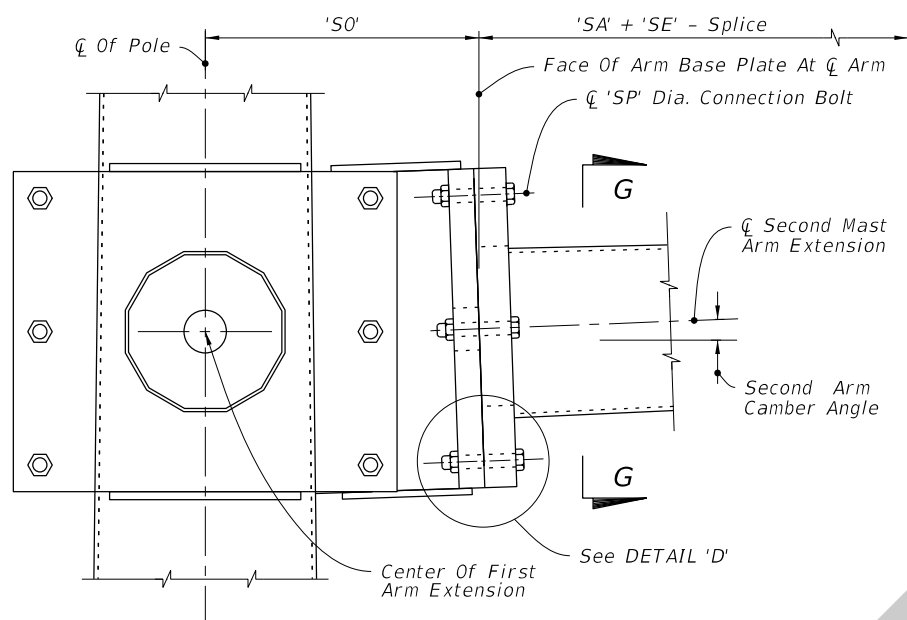
MAST ARM ASSEMBLY



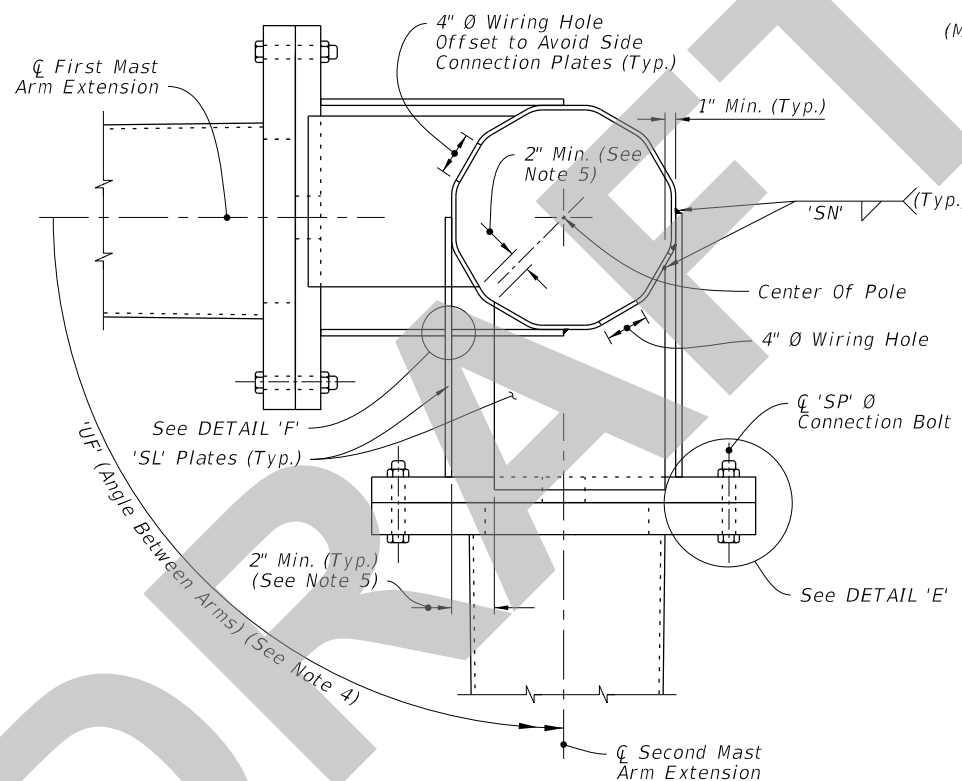
ARM SPLICE



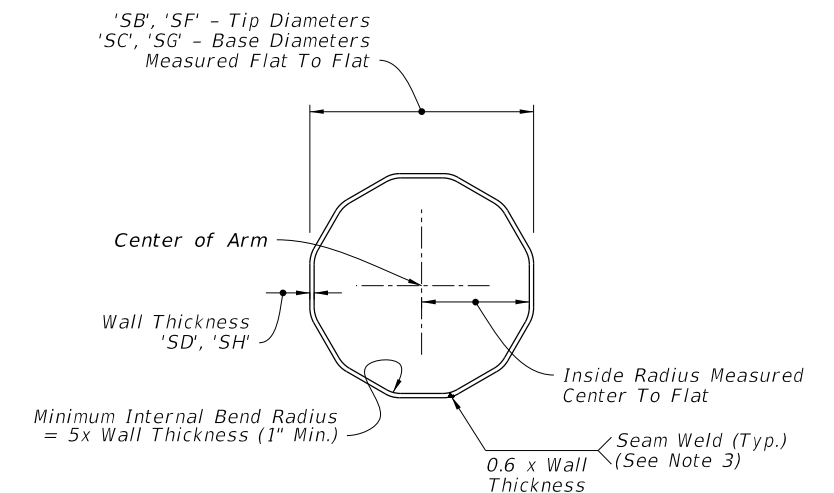
DOUBLE ARM CONNECTION



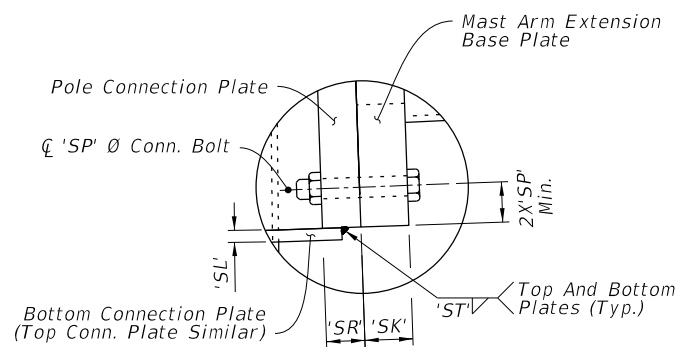
SECTION E-E



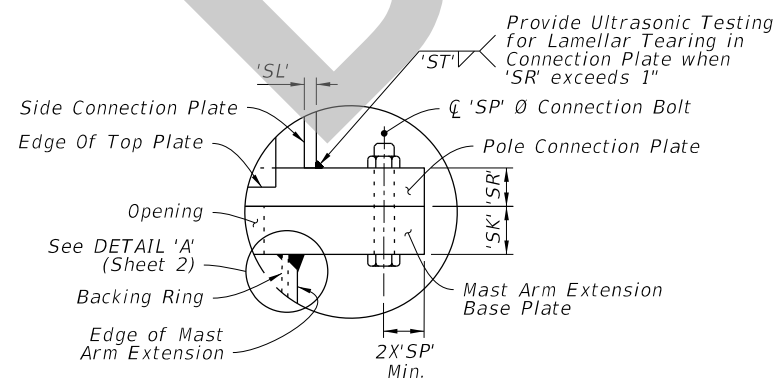
SECTION F-F



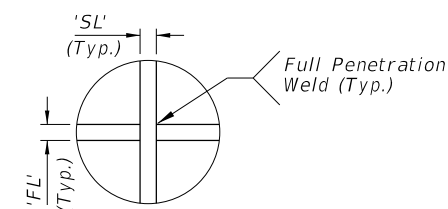
SECTION G-G



DETAIL 'D'



DETAIL 'E'



DETAIL 'F'

NOTE:

1. Install the 'Slip Joint' splice with a tight fit and no change in the Mast Arm taper due to the splice.
2. Details shown on this sheet are for 12 sided pole sections. However, sections with more than 12 sides and round sections are permitted provided outside diameter and wall thickness are not reduced.
3. Match mark the Arm and Connection Plates to ensure proper assembly and the seam weld is in the proper location (seam located at the bottom side of the Arm).
4. 'UF' measured counter clockwise from Ø First Mast Arm Extension.
5. Adjust width of top and bottom Connection Plates to maintain minimum clearance shown.

DOUBLE ARM CONNECTIONS & SPLICE DETAILS

8/26/2019 8:04:15 AM

LAST REVISION	DESCRIPTION:
11/01/19	

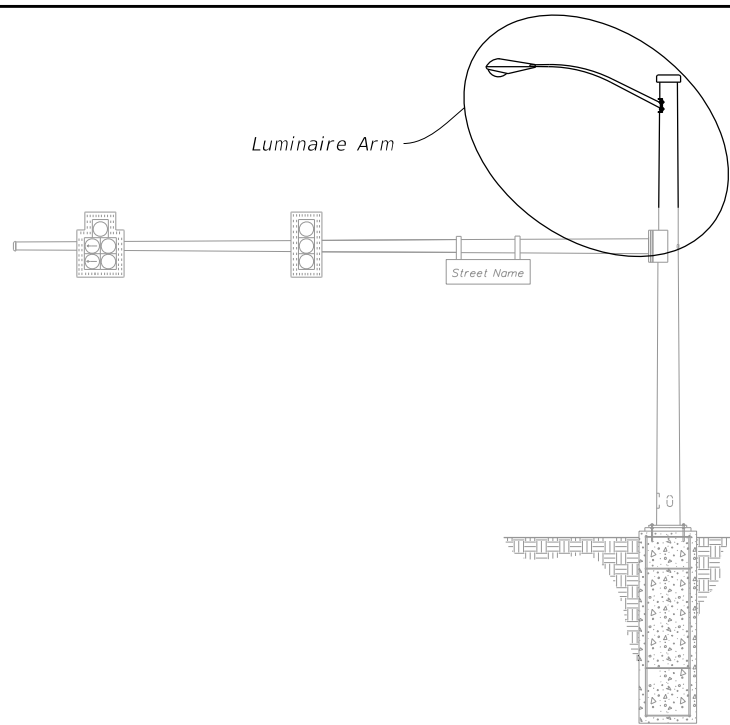


FY 2020-21
STANDARD PLANS

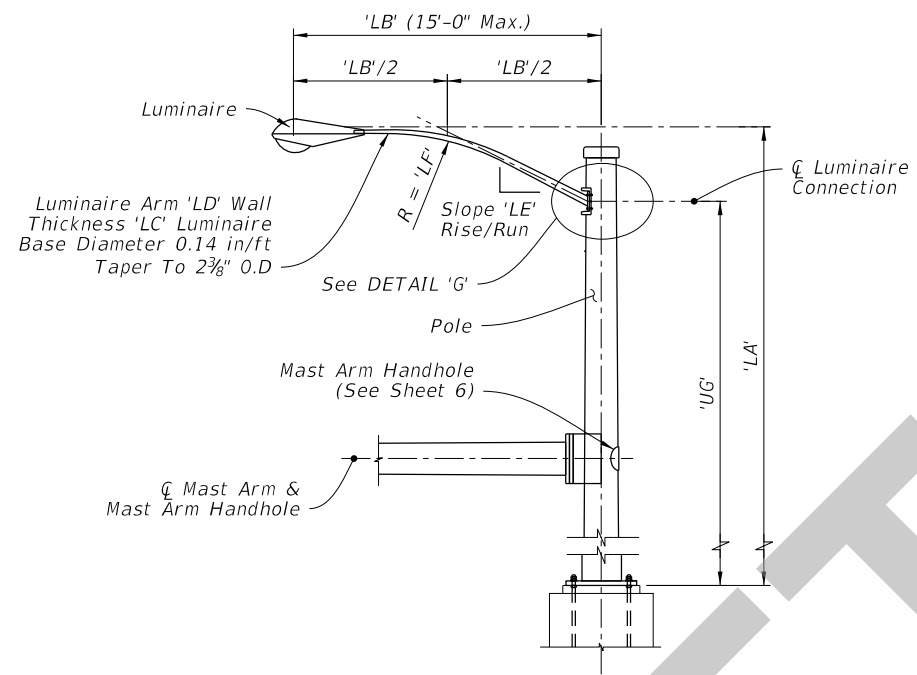
MAST ARM ASSEMBLIES

INDEX
649-031

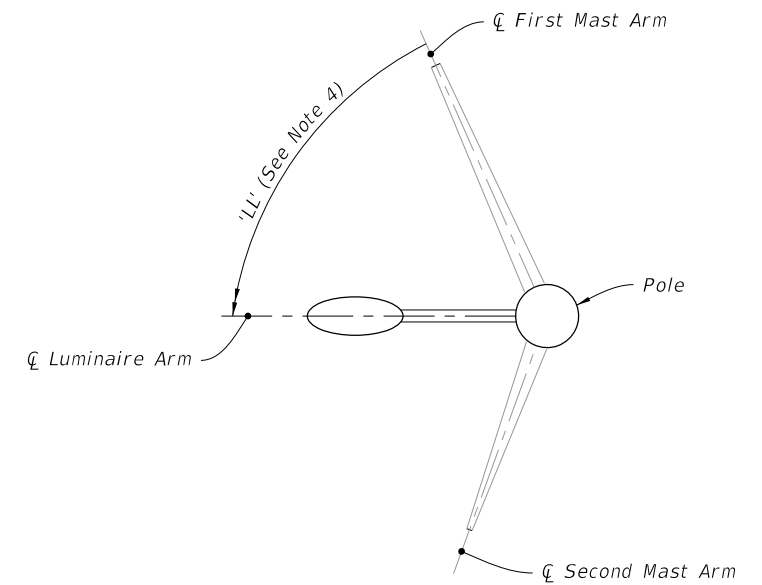
SHEET
4 of 6



MAST ARM ASSEMBLY



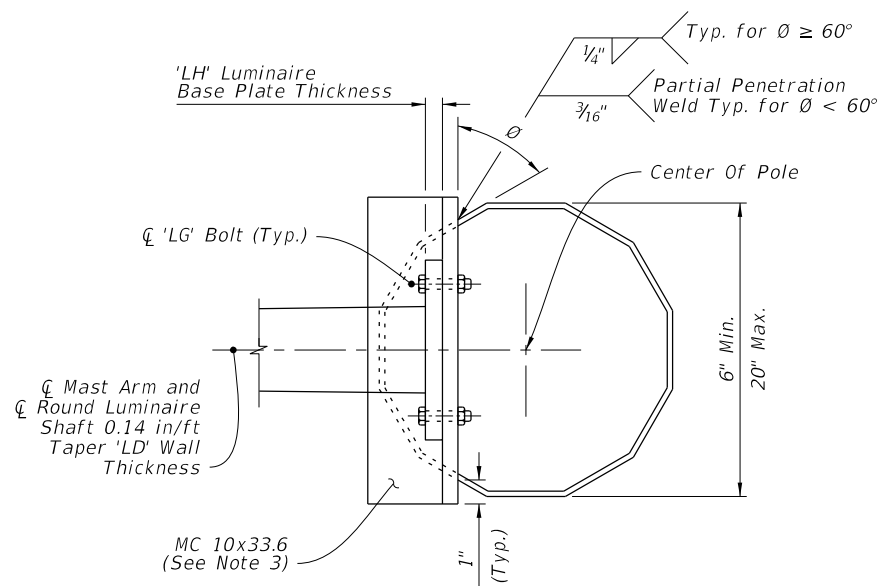
LUMINAIRE ELEVATION



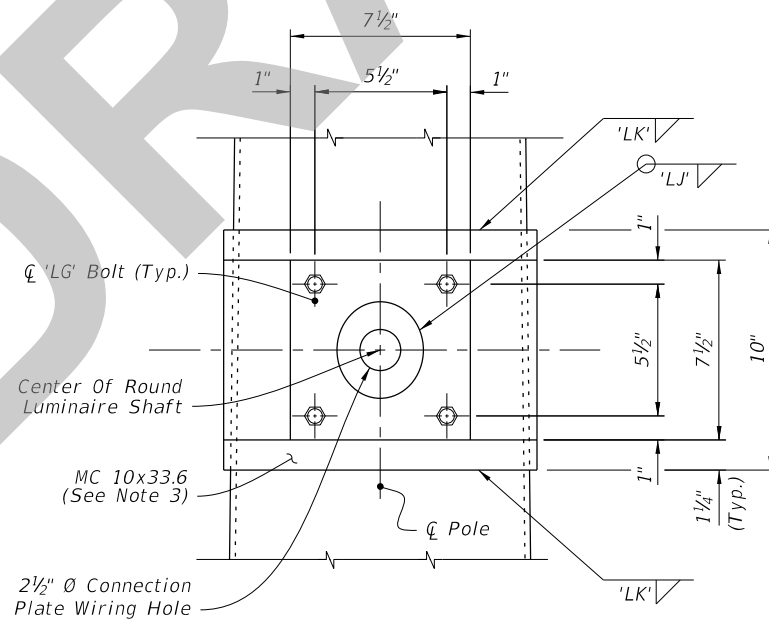
LUMINAIRE ORIENTATION

NOTES:

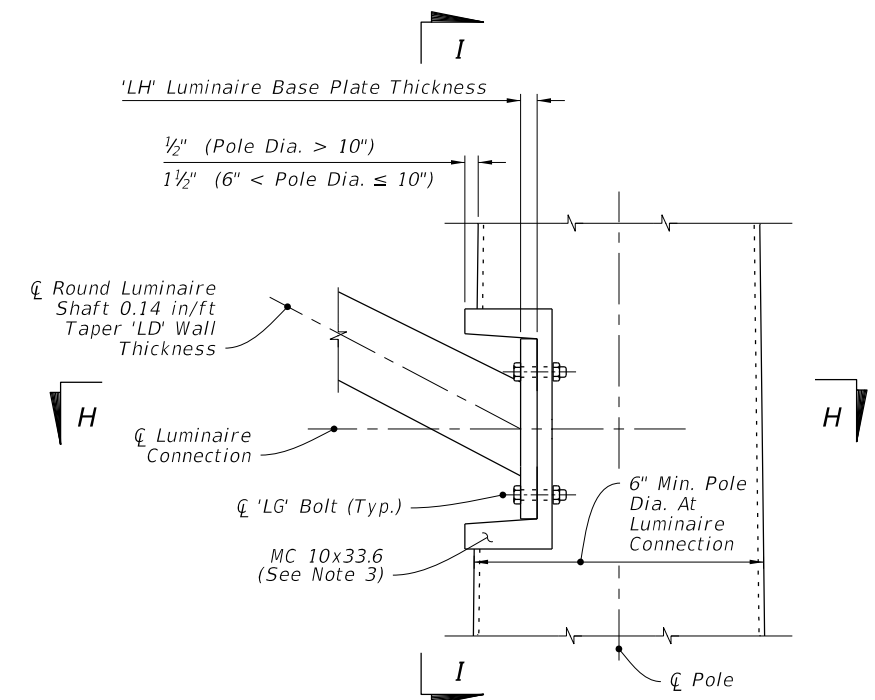
- Galvanized steel luminaire type and luminaire length may be found in the Lighting Plans.
- Align Luminaire Arm with Single Mast Arm or First Arm of Double Mast Arm unless indicated otherwise in the plans.
- The fabricator may substitute a 1/2" thick bent plate with the same flange width, height, and length as the MC 10x33.6 Channel section.
- 'LL' measure counter clockwise from First Mast Arm.



SECTION H-H



SECTION I-I



LUMINAIRE CONNECTION ELEVATION

DETAIL 'G'
LUMINAIRE ARM AND CONNECTION DETAILS

8/26/2019 8:04:16 AM

LAST REVISION	DESCRIPTION:
11/01/19	



FY 2020-21
STANDARD PLANS

MAST ARM ASSEMBLIES

INDEX
649-031

SHEET
5 of 6