

Index 536-002

Guardrail Transitions and Connections for Existing Bridges

ORIGINATION

Date: July 31, 2019
Name: Richard Stepp
Phone: 850-414-4313
Email: richard.stepp@dot.state.fl.us

COMMENTARY

See Origination Form

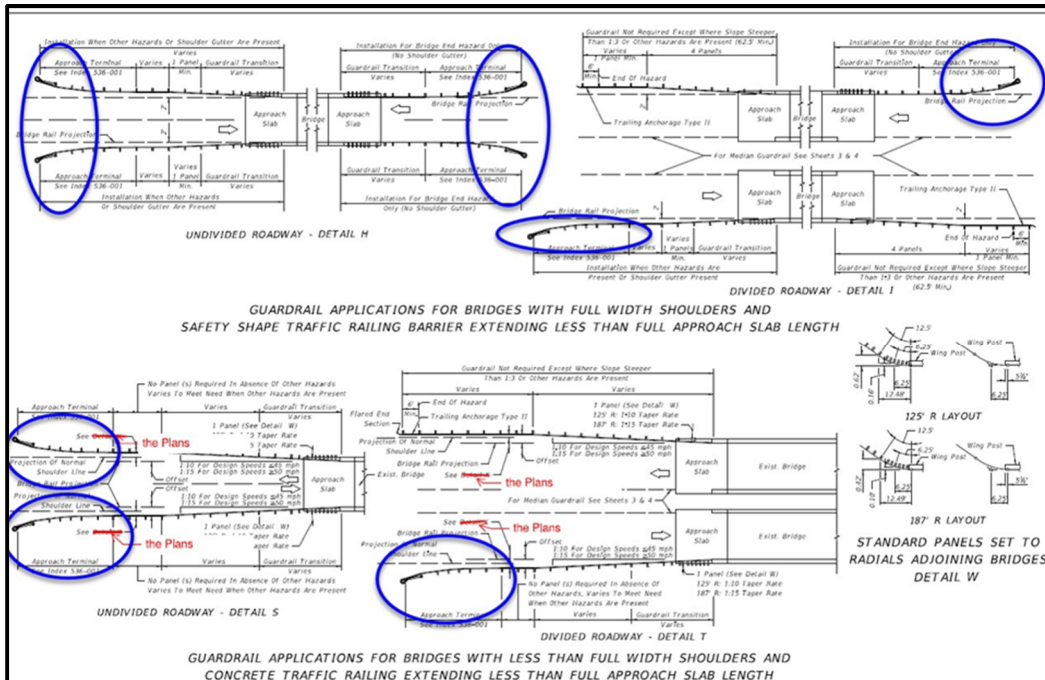
COMMENTS AND RESPONSES

BLACK = Industry Review Comments **RED** = Standard Plans Response

Name: Turnpike
Date: August 8, 2019

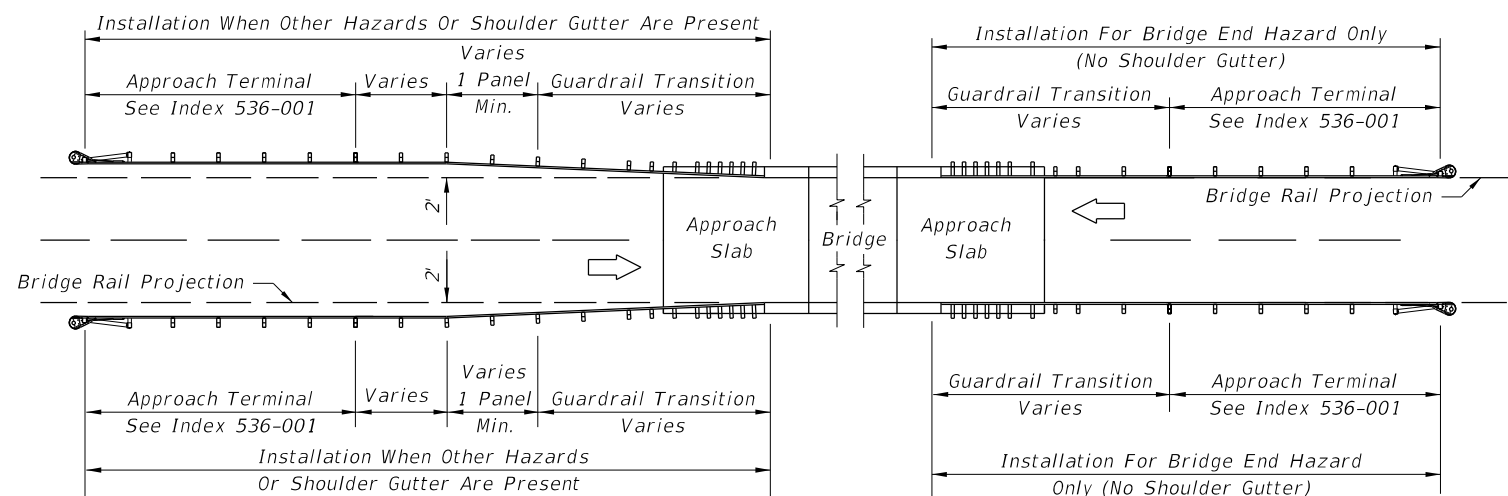
COMMENT:

On Sheet 2 (shown below), since we are not allowing flared end terminals any longer it is recommended to update this standard plan index showing parallel end terminals.

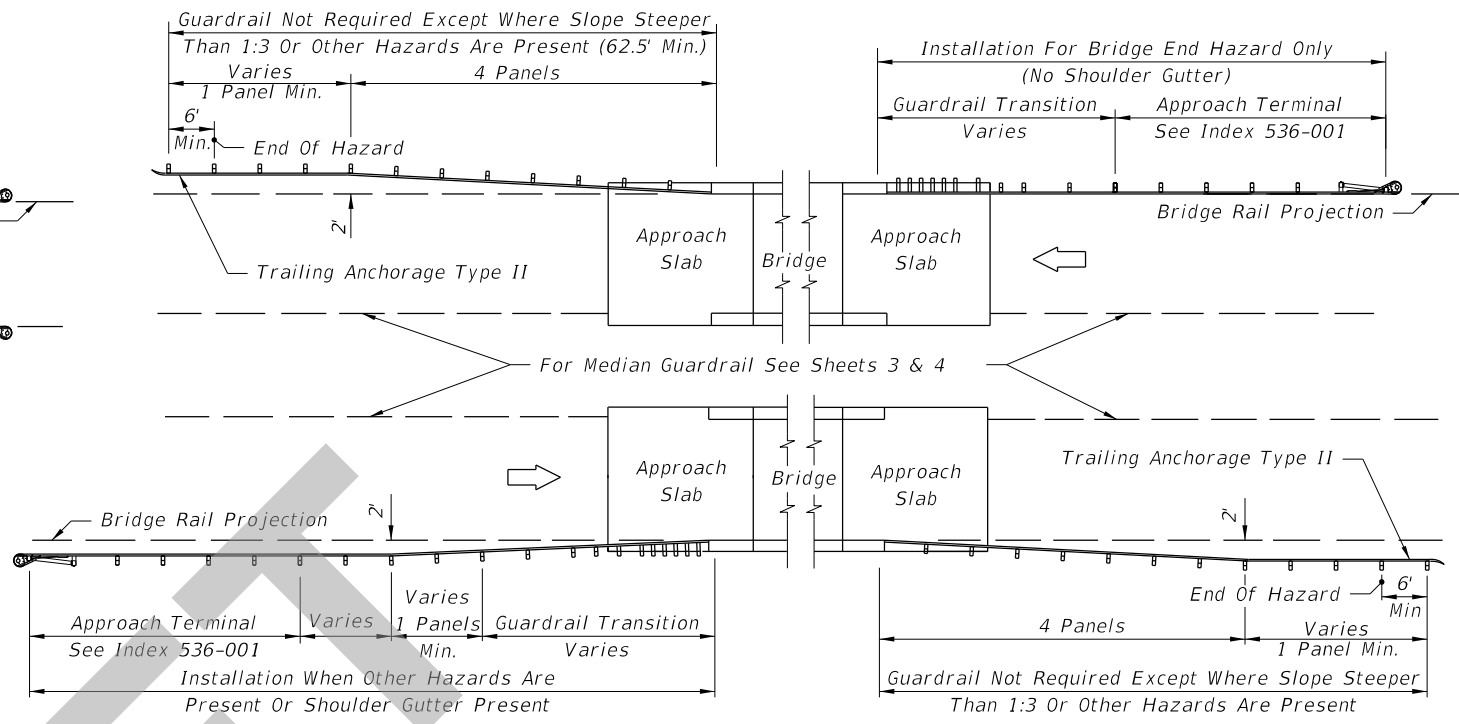


RESPONSE:

Date: August 27, 2019
Agreed. Updates made.

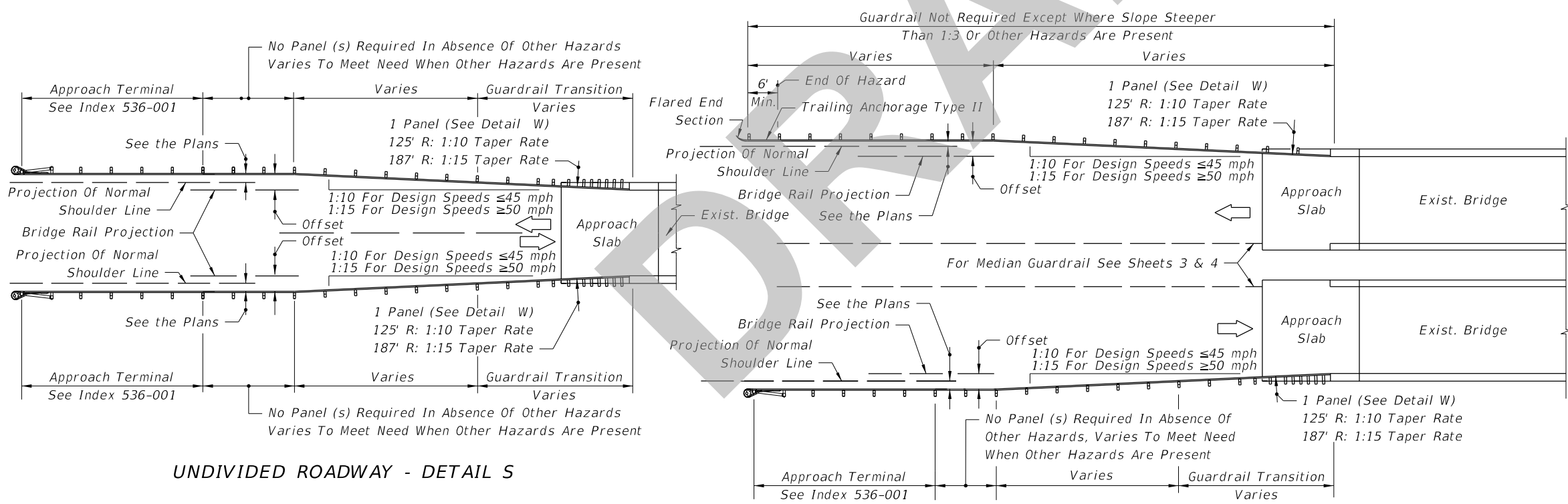


UNDIVIDED ROADWAY - DETAIL H



DIVIDED ROADWAY - DETAIL I

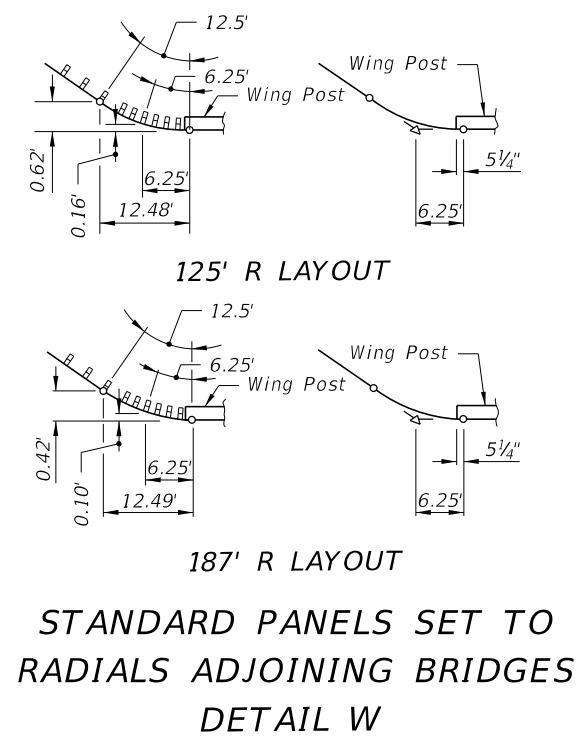
GUARDRAIL APPLICATIONS FOR BRIDGES WITH FULL WIDTH SHOULDERS AND SAFETY SHAPE TRAFFIC RAILING BARRIER EXTENDING LESS THAN FULL APPROACH SLAB LENGTH



UNDIVIDED ROADWAY - DETAIL S

DIVIDED ROADWAY - DETAIL T

GUARDRAIL APPLICATIONS FOR BRIDGES WITH LESS THAN FULL WIDTH SHOULDERS AND CONCRETE TRAFFIC RAILING EXTENDING LESS THAN FULL APPROACH SLAB LENGTH



9/24/2019 11:51:30 AM

LAST REVISION 11/01/19	DESCRIPTION:	FDOT FY 2020-21 STANDARD PLANS	GUARDRAIL TRANSITIONS AND CONNECTIONS FOR EXISTING BRIDGES	INDEX 536-002	SHEET 2 of 28
---------------------------	--------------	--------------------------------------	--	------------------	------------------