

ORIGINATION FORM

Proposed Revisions to a Standard Plans Index
(Please provide all information – Incomplete forms will be returned)

Contact Information:

Date: June 18, 2019
Originator: **Mary Jane Hayden**
Phone: (850) 414-4783
Email: maryjane.hayden@dot.state.fl.us

Standard Plans:

Index Number: **350-001**
Sheet Number (s): 1 of 4
Index Title: Concrete Pavement Joints

Summary of the changes:

Sheet 1: Clarified Note 8.

Commentary / Background:

Other Affected Offices / Documents: (Provide name of responsible personnel)

- | Yes | No | |
|--------------------------|--------------------------|-----------------------------|
| <input type="checkbox"/> | <input type="checkbox"/> | Other Standard Plans – |
| <input type="checkbox"/> | <input type="checkbox"/> | FDOT Design Manual – |
| <input type="checkbox"/> | <input type="checkbox"/> | Basis of Estimates Manual – |
| <input type="checkbox"/> | <input type="checkbox"/> | Standard Specifications – |
| <input type="checkbox"/> | <input type="checkbox"/> | Approved Product List – |
| <input type="checkbox"/> | <input type="checkbox"/> | Construction – |
| <input type="checkbox"/> | <input type="checkbox"/> | Maintenance – |

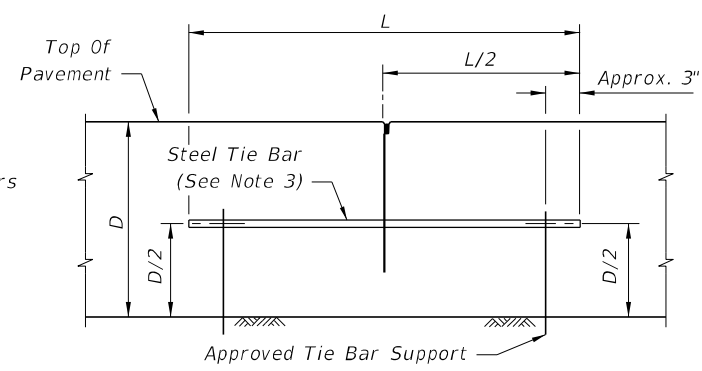
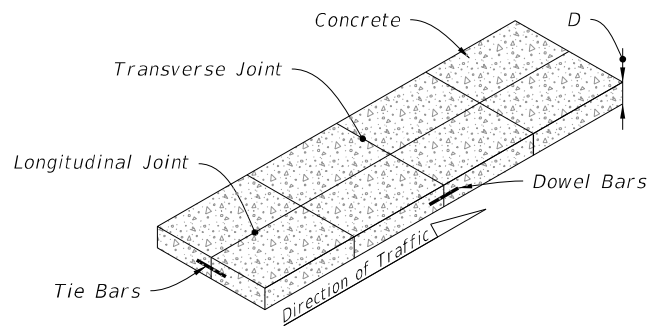
Origination Package Includes: (Email or hand deliver package to Derwood Sheppard)

- | Yes | N/A | |
|-------------------------------------|--------------------------|---|
| <input checked="" type="checkbox"/> | <input type="checkbox"/> | Redline Mark-ups |
| <input type="checkbox"/> | <input type="checkbox"/> | Proposed Standard Plan Instructions (SPI) |
| <input type="checkbox"/> | <input type="checkbox"/> | Revised SPI |
| <input type="checkbox"/> | <input type="checkbox"/> | Other Support Documents |

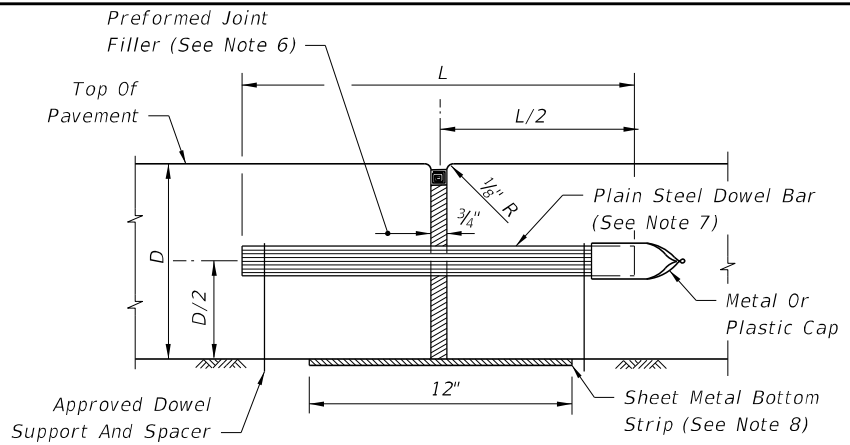
Implementation:

- Design Bulletin (Interim) DCE Memo Program Mgmt. Bulletin FY-Standard Plans (Next Release)

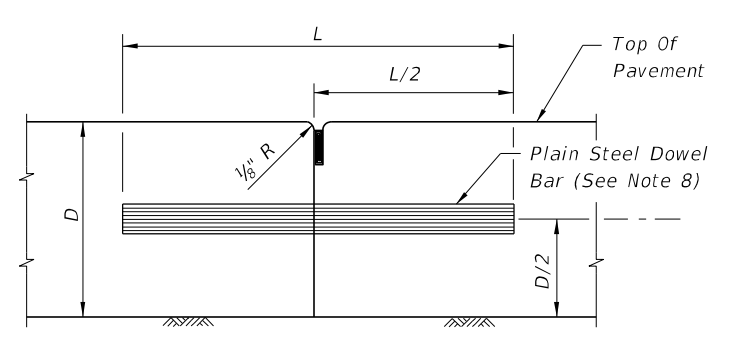
————— **Contact the Roadway Design Office for assistance in completing this form** —————



BUTT CONSTRUCTION JOINT



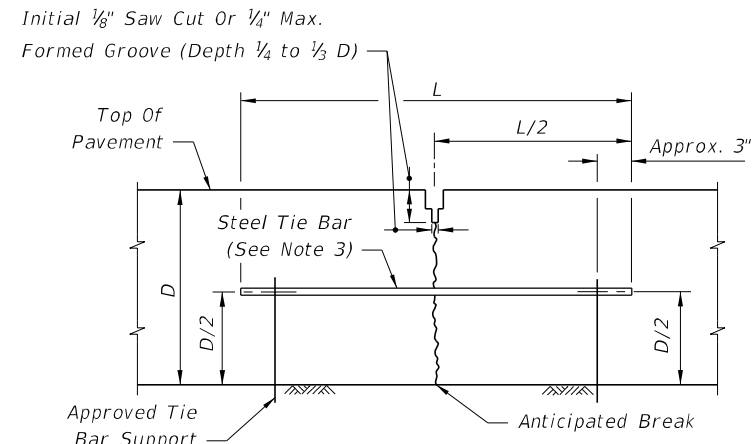
EXPANSION JOINT
(See Note 6)



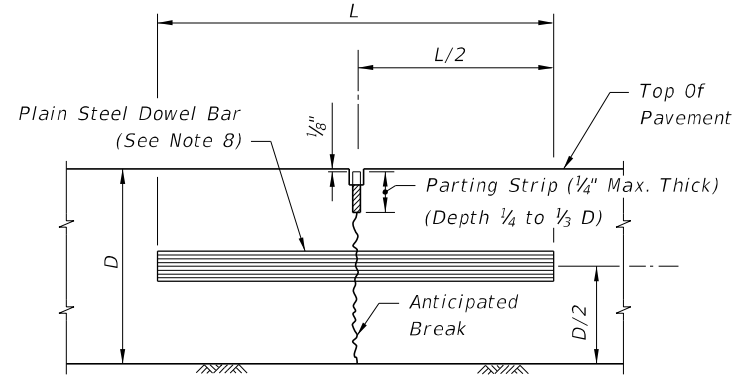
BUTT CONSTRUCTION JOINT
(Used At Discontinuance Of Work)

NOTES:

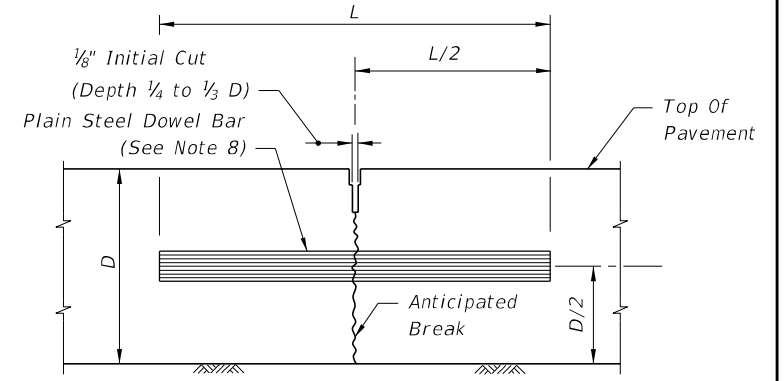
1. For joint seal dimensions see Sheet 2.
2. For slabs poured simultaneously, tie bars may be inserted in the plastic concrete by means approved by the Engineer.
3. For Longitudinal Joints:
 - A. Tie bars are deformed #4 or #5 reinforcing steel bars meeting the requirements of Specification 931.
 - B. Provide a standard load transfer tied joint with #4 bars 25" in length at 24" spacing or #5 bars 30" in length at 38" spacing.
4. Transverse joints are to be spaced at a maximum of 15'. Dowels are required at all transverse joints unless otherwise noted in the plans.
5. Expansion joints to be placed at street intersections and other locations as indicated in the Plans. For bridge expansion joints, see Index 370-001.



LANE-TIE JOINT
(See Note 2)



CONTRACTION JOINT
(Vibro Case Method)



CONTRACTION JOINT
(Sawed Method)

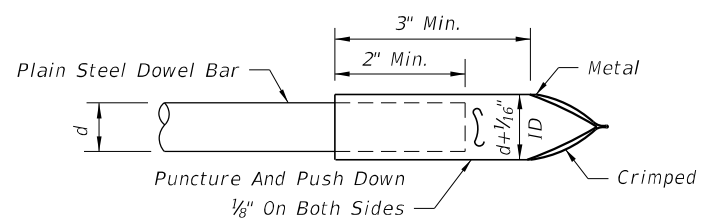
LONGITUDINAL JOINTS

TRANSVERSE JOINTS

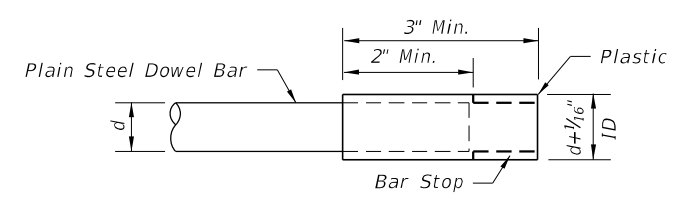
7. Coat and lubricate plain steel dowel bars in accordance with Specification 350. **Revised Note**

8. Sheet metal bottom strips in accordance with Specification 931.

DOWELS (LENGTH 18")	
Pavement Thickness "D"	Diameter
6"-6 1/2"	3/4"
7"-8"	1"
8 1/2"-10 1/2"	1 1/4"
≥11"	1 1/2"

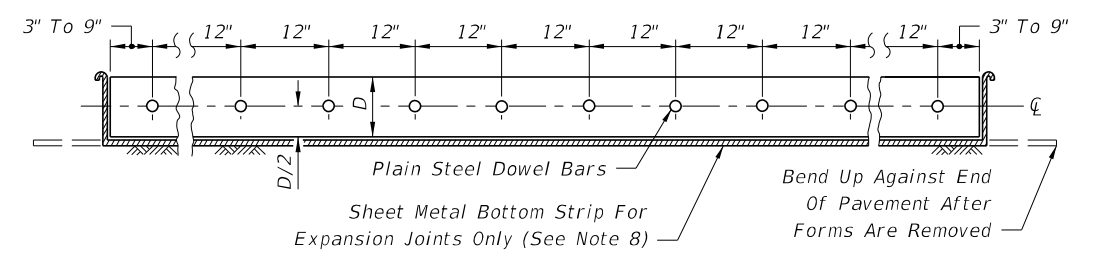


METAL



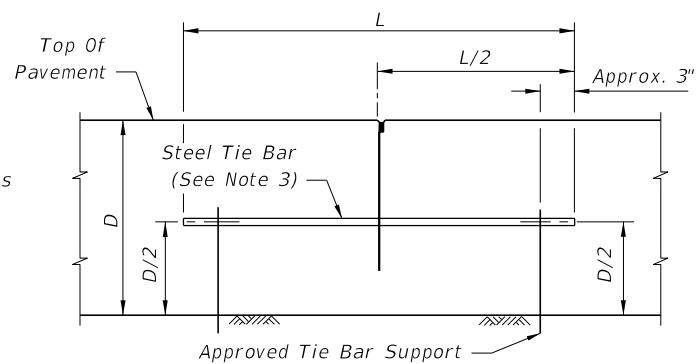
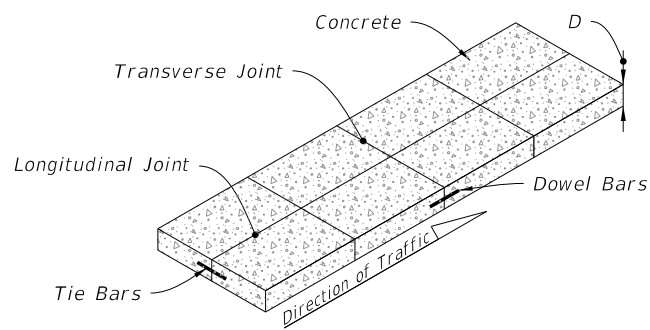
PLASTIC

DOWEL BARS CAPS

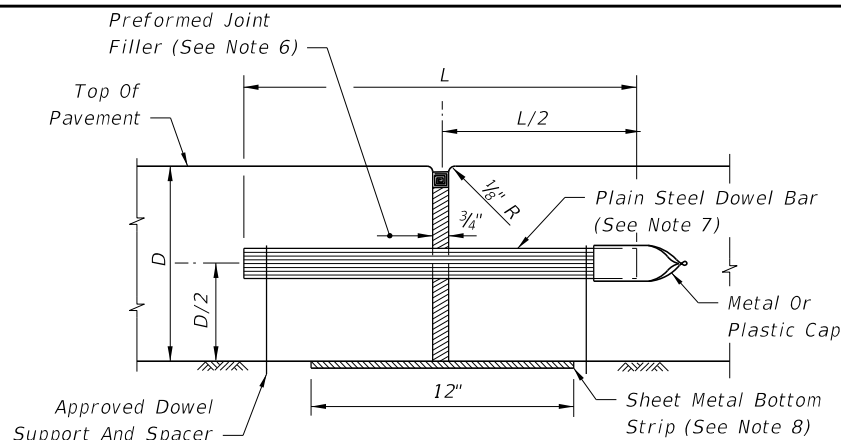


DOWEL BAR LAYOUT

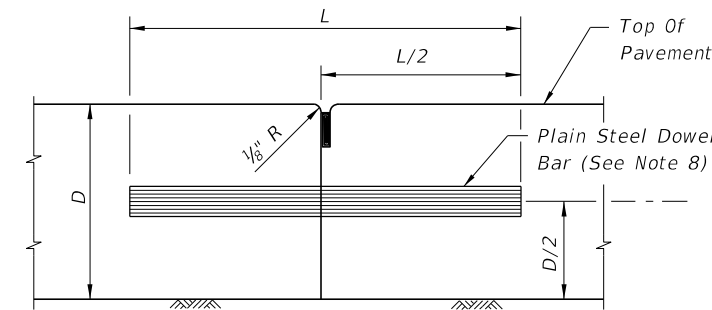
10/25/2018 8:49:24 AM



BUTT CONSTRUCTION JOINT



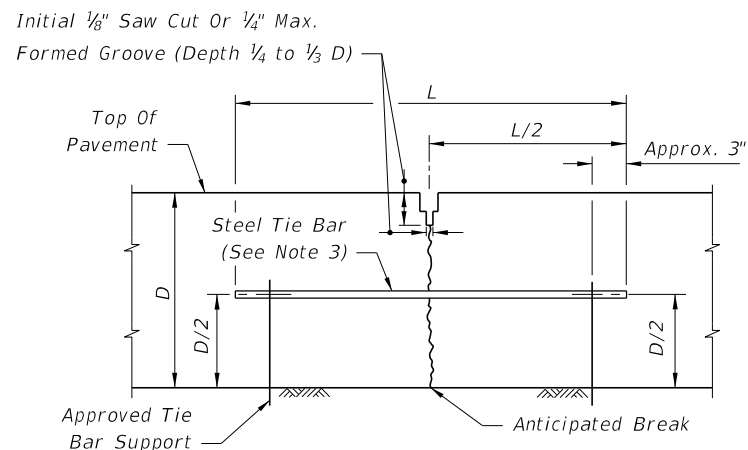
EXPANSION JOINT
(See Note 6)



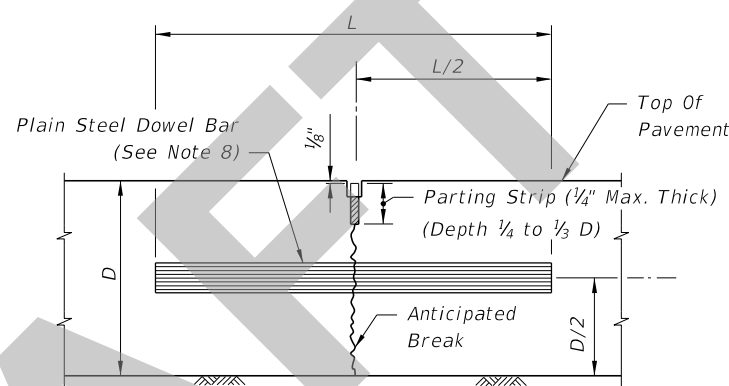
BUTT CONSTRUCTION JOINT
(Used At Discontinuance Of Work)

NOTES:

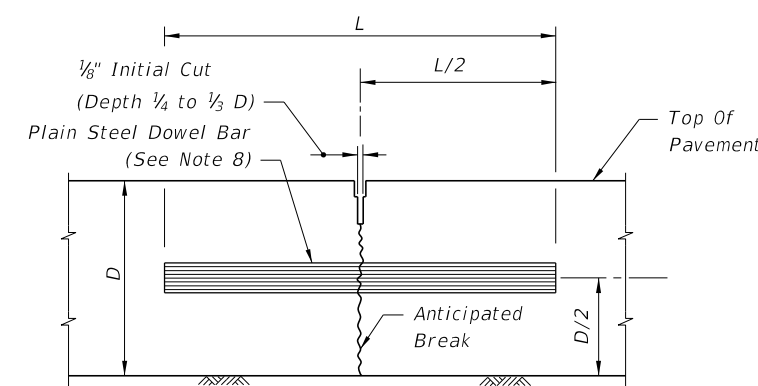
1. For joint seal dimensions see Sheet 2.
2. For slabs poured simultaneously, tie bars may be inserted in the plastic concrete by means approved by the Engineer.
3. For Longitudinal Joints:
 - A. Tie bars are deformed #4 or #5 reinforcing steel bars meeting the requirements of Specification 931.
 - B. Provide a standard load transfer tied joint with #4 bars 25" in length at 24" spacing or #5 bars 30" in length at 38" spacing.
4. Transverse joints are to be spaced at a maximum of 15'. Dowels are required at all transverse joints unless otherwise noted in the plans.
5. Expansion joints to be placed at street intersections and other locations as indicated in the Plans. For bridge expansion joints, see Index 370-001.
6. Punch clean holes in preformed joint filler greater than bar diameter.
7. Coat and lubricate plain steel dowel bars in accordance with Specification 350.
8. Sheet metal bottom strips in accordance with Specification 931. Not required with asphalt base.



LANE-TIE JOINT
(See Note 2)



CONTRACTION JOINT
(Vibro Case Method)

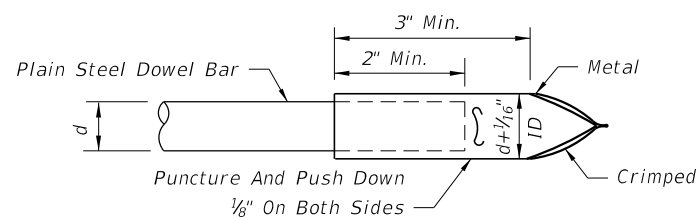


CONTRACTION JOINT
(Sawed Method)

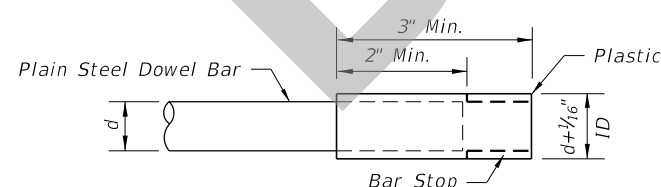
LONGITUDINAL JOINTS

TRANSVERSE JOINTS

DOWELS (LENGTH 18")	
Pavement Thickness "D"	Diameter
6"-6 1/2"	3/4"
7"-8"	1"
8 1/2"-10 1/2"	1 1/4"
≥11"	1 1/2"

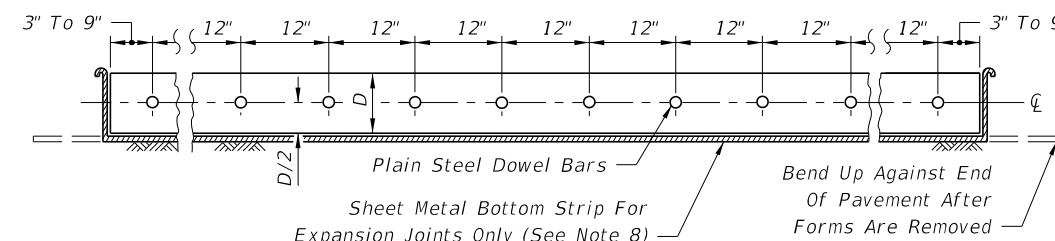


METAL



PLASTIC

DOWEL BARS CAPS



DOWEL BAR LAYOUT

8/7/2019 3:45:24 PM