

# ORIGINATION FORM

Proposed Revisions to a Standard Plans Index  
(Please provide all information – Incomplete forms will be returned)

## Contact Information:

Date: May 7, 2018  
Originator: **Derwood Sheppard**  
Phone: (850) 414-4334  
Email: derwood.sheppard@dot.state.fl.us

## Standard Plans:

Index Number: **522-001**  
Sheet Number (s): 1 and 2 of 2  
Index Title: Concrete Sidewalk

## Summary of the changes:

Sheet 1: Deleted the 6" Min. for turnouts or curb ramps call out and 8" dimension behind the Return Curbs in the LONGITUDINAL SECTION; Deleted 4'-0" dimension from driveways; changed curb ramp type in the SIDEWALK WITH UTILITY STRIP detail.

Sheet 2: Deleted 8" dimension behind the Return Curbs in the LONGITUDINAL SECTION: +

## Commentary / Background:

### Other Affected Offices / Documents: (Provide name of responsible personnel)

- | Yes                      | No                       |                             |
|--------------------------|--------------------------|-----------------------------|
| <input type="checkbox"/> | <input type="checkbox"/> | Other Standard Plans –      |
| <input type="checkbox"/> | <input type="checkbox"/> | FDOT Design Manual –        |
| <input type="checkbox"/> | <input type="checkbox"/> | Basis of Estimates Manual – |
| <input type="checkbox"/> | <input type="checkbox"/> | Standard Specifications –   |
| <input type="checkbox"/> | <input type="checkbox"/> | Approved Product List –     |
| <input type="checkbox"/> | <input type="checkbox"/> | Construction –              |
| <input type="checkbox"/> | <input type="checkbox"/> | Maintenance –               |

### Origination Package Includes: (Email or hand deliver package to Derwood Sheppard)

- | Yes                                 | N/A                      |   |
|-------------------------------------|--------------------------|---|
| <input checked="" type="checkbox"/> | <input type="checkbox"/> | Redline Mark-ups                          |
| <input type="checkbox"/>            | <input type="checkbox"/> | Proposed Standard Plan Instructions (SPI) |
| <input type="checkbox"/>            | <input type="checkbox"/> | Revised SPI                               |
| <input type="checkbox"/>            | <input type="checkbox"/> | Other Support Documents                   |

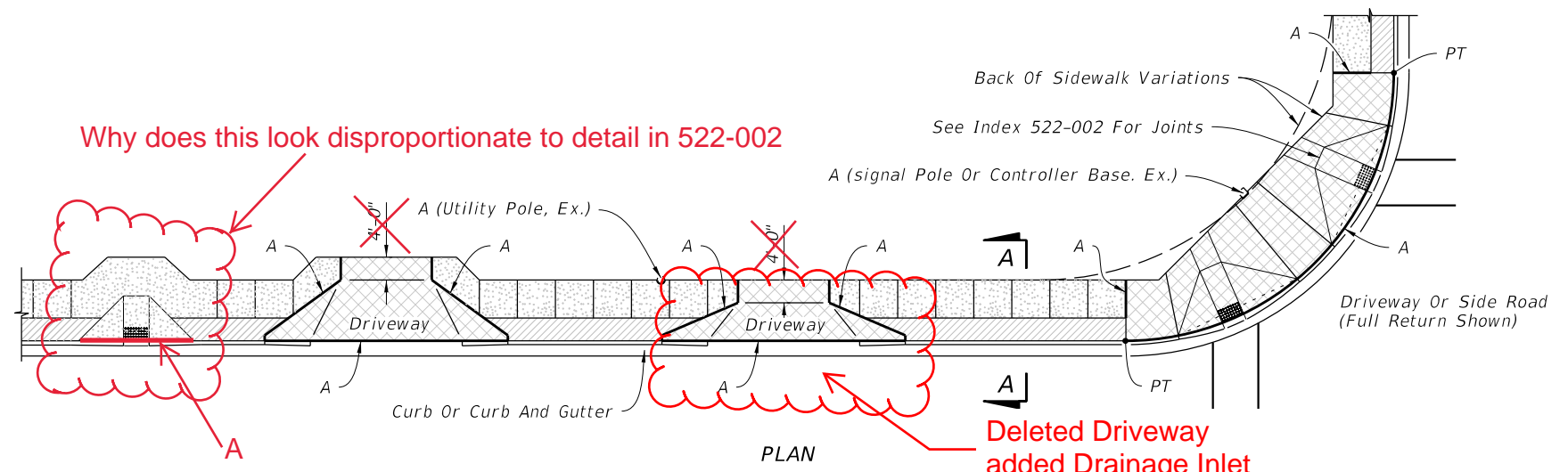
## Implementation:

- Design Bulletin (Interim)    DCE Memo    Program Mgmt. Bulletin    FY-Standard Plans (Next Release)

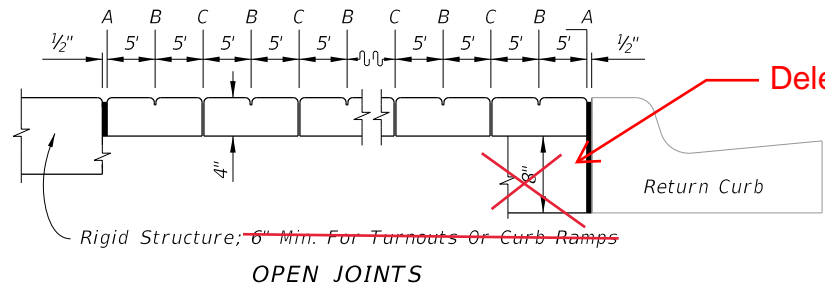
————— **Contact the Roadway Design Office for assistance in completing this form** —————

**GENERAL NOTES:**

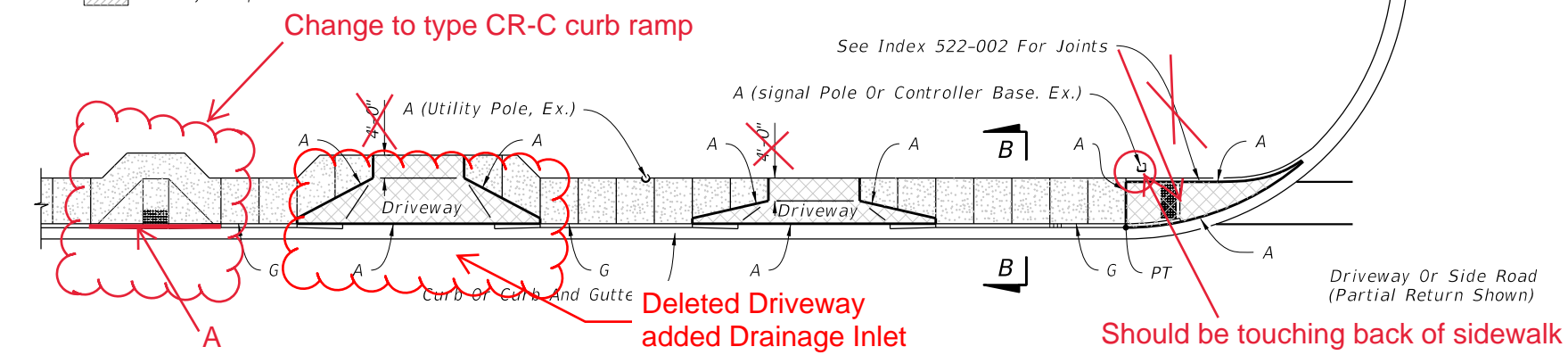
1. Construct sidewalks in accordance with Specification 522. Use 6" concrete for Sidewalks and Curb Ramps Located within Curb Returns (See Plan View). Install all other concrete with thickness as shown, unless otherwise detailed in the Plans.
2. Include detectable warnings on sidewalk curb ramps in accordance with Index 522-002.
3. For TURNOUTS see Index 000-515.
4. Bond breaker material can be any impermeable coated or sheet membrane or preformed material having a thickness of not less than 6 mils not more than 1/2".
5. Construct sidewalks with Edge Beam through the limits of any surface mounted Pedestrian/Bicycle Railing or Pipe Guiderail shown in the plans. (See RAILING DETAIL)
6. When roadways or driveways are newly constructed, reconstructed or altered, construct the cross slopes for crosswalks and discontinuous sidewalks as follows:
  - A. Max. 0.02 cross slope for roadways or driveway controlled by "STOP" Sign or "YIELD" sign.
  - B. Max. 0.05 cross slope for roadways or driveways controlled by traffic signal.



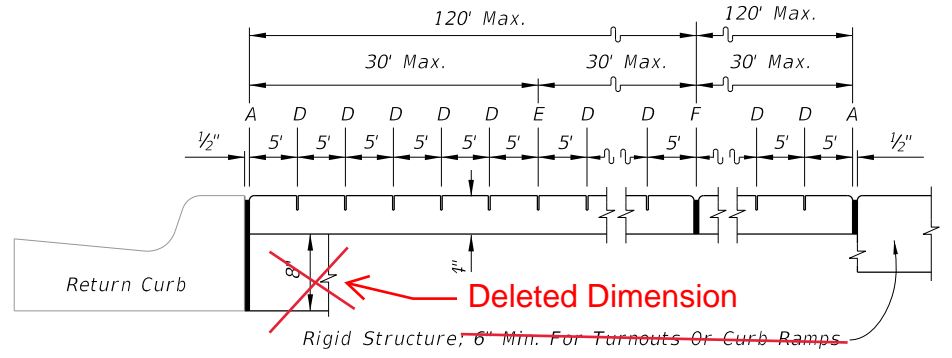
**SIDEWALK WITH UTILITY STRIP**



- LEGEND:**
- 4" Thick Sidewalk
  - 6" Thick Sidewalk
  - Utility Strip

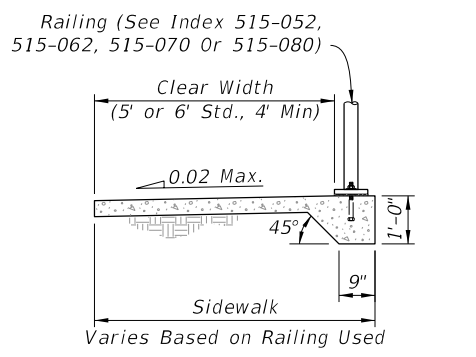
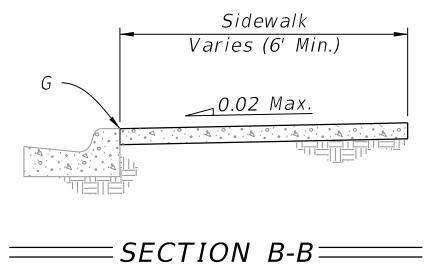
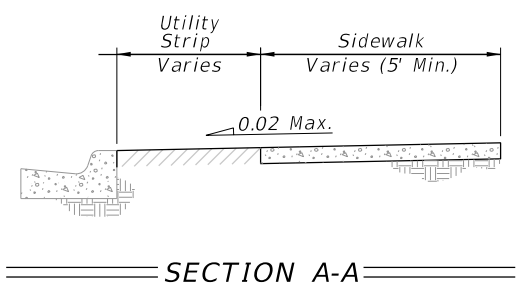


**SIDEWALK WITHOUT UTILITY STRIP**



**LONGITUDINAL SECTION**

- LEGEND:**
- A- 1/2" Expansion Joints (Preformed Joint Filler)
  - B- 1/8" Dummy Joints, Tooled
  - C- 1/8" Formed Open Joints
  - D- 3/16" Saw Cut Joints, 1 1/2" Deep (within 96 hours) Max. 5' Centers
  - E- 3/16" Saw Cut Joints, 1 1/2" Deep (within 12 hours) Max. 30' Centers Joint(s) Required When Length Exceeds 30'
  - F- 1/2" Expansion Joint When Run Of Sidewalk Exceeds 120'. Intermediate locations when called for in the plans or at locations as directed by the Engineer.
  - G- Cold Joint With Bond Breaker, Tooled



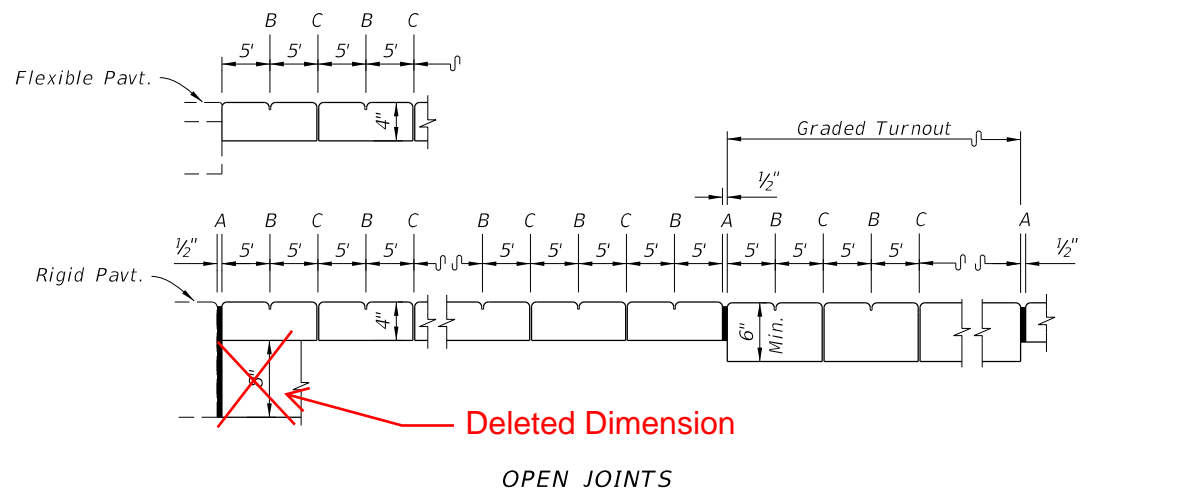
**SIDEWALK JOINTS**

**GENERAL NOTES AND CONCRETE SIDEWALK ON CURBED ROADWAYS**

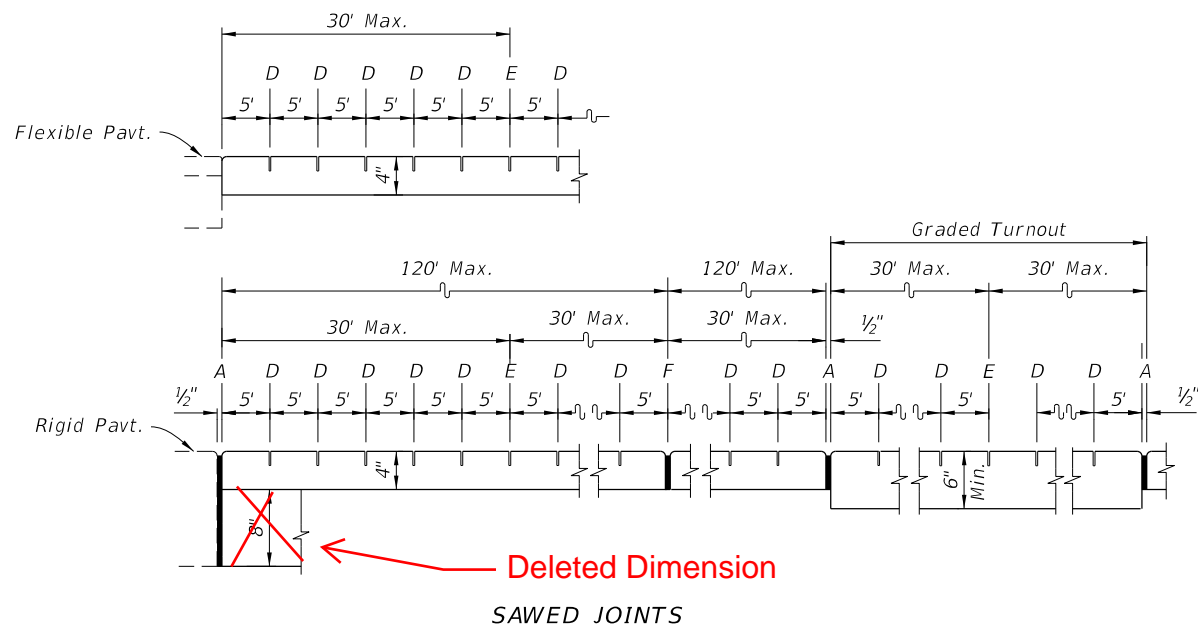
10/16/2017 9:47:15 AM

LAST REVISION 11/01/17	REVISION	DESCRIPTION:	<p>FY 2018-19 STANDARD PLANS</p>	<p>CONCRETE SIDEWALK</p>	INDEX 522-001	SHEET 1 of 2
---------------------------	----------	--------------	--------------------------------------	--------------------------	------------------	-----------------

DCS  
5/7/18



OPEN JOINTS



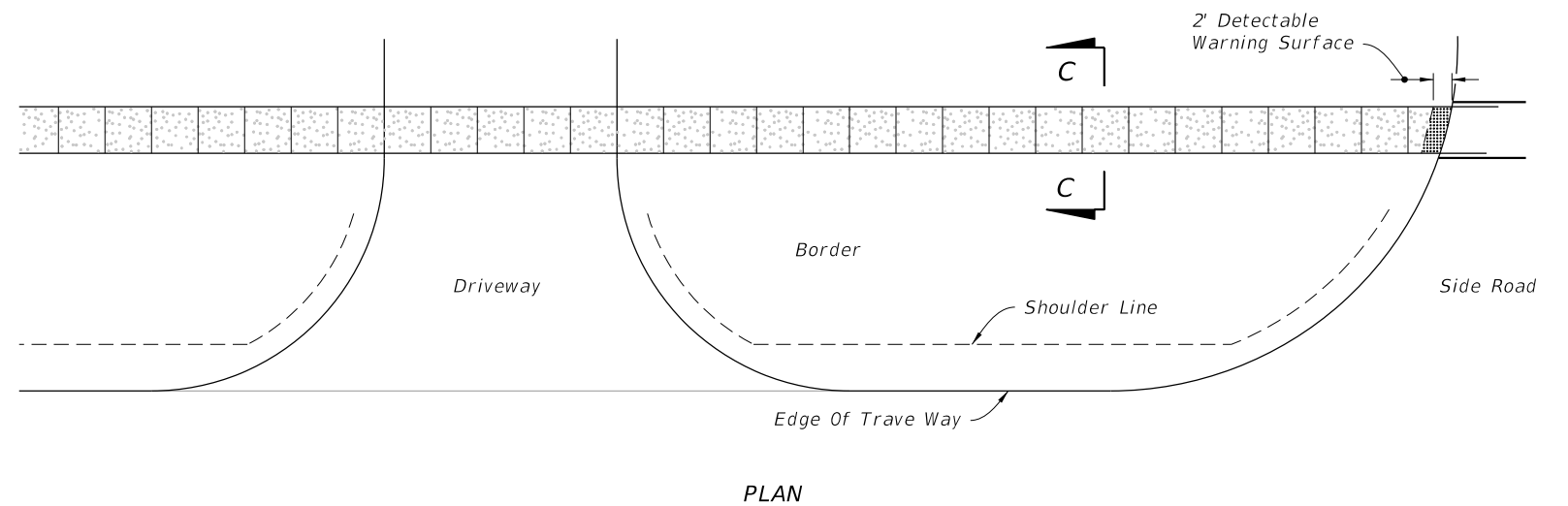
SAWED JOINTS

LONGITUDINAL SECTION

LEGEND:

- A- 1/2" Expansion Joints (Preformed Joint Filler)
- B- 1/8" Dummy Joints, Tooled
- C- 1/8" Formed Open Joints
- D- 3/16" Saw Cut Joints, 1 1/2" Deep (within 96 hours) Max. 5' Centers
- E- 3/16" Saw Cut Joints, 1 1/2" Deep (within 12 hours) Max. 30' Centers  
Joint(s) Required When Length Exceeds 30'
- F- 1/2" Expansion Joint When Run Of Sidewalk Exceeds 120'. Intermediate locations when called for in the plans or at locations as directed by the Engineer.

SIDEWALK JOINTS

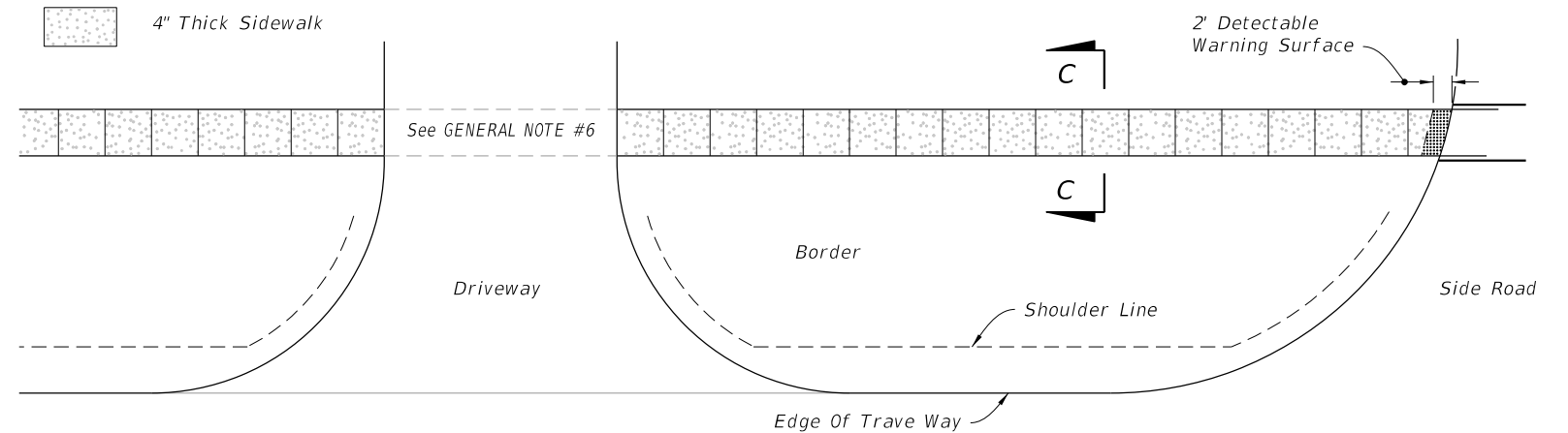


PLAN

CONTINUOUS SIDEWALK

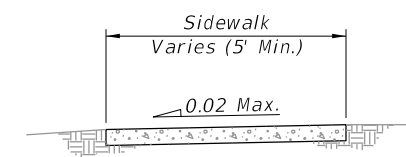
LEGEND:

4" Thick Sidewalk



PLAN

DISCONTINUOUS SIDEWALK



SECTION C-C

CONCRETE SIDEWALK ON FLUSH SHOULDER ROADWAYS

10/16/2017 9:47:16 AM

LAST REVISION 11/01/17	DESCRIPTION:
---------------------------	--------------



FY 2018-19  
STANDARD PLANS

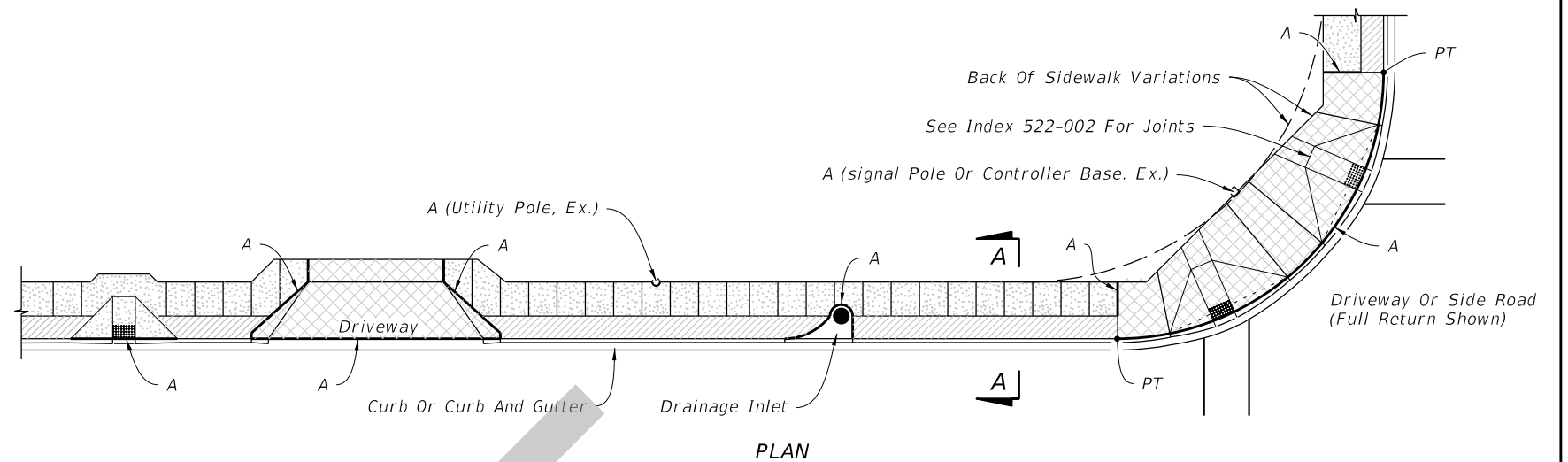
CONCRETE SIDEWALK

INDEX  
522-001

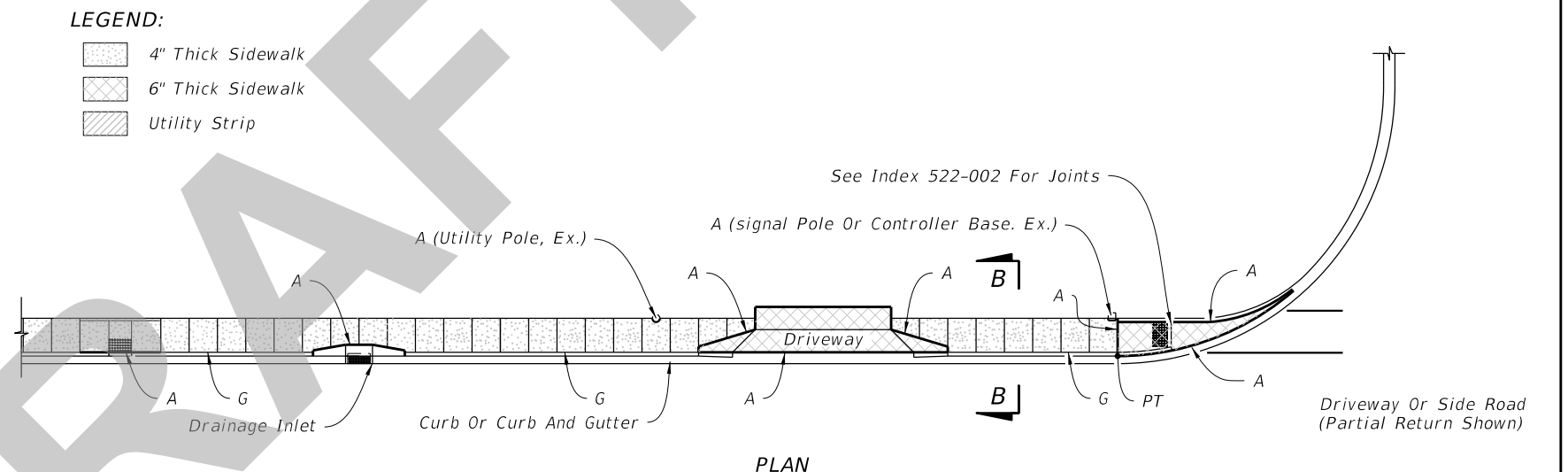
SHEET  
2 of 2

**GENERAL NOTES:**

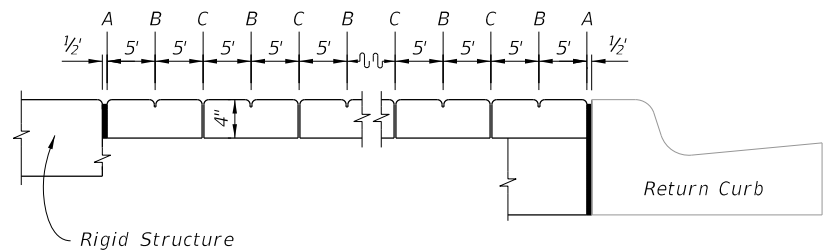
1. Construct sidewalks in accordance with Specification 522. Use 6" concrete for Sidewalks and Curb Ramps Located within Curb Returns (See Plan View). Install all other concrete with thickness as shown, unless otherwise detailed in the Plans.
2. Include detectable warnings on sidewalk curb ramps in accordance with Index 522-002.
3. For Driveways see Index 522-003.
4. Bond breaker material can be any impermeable coated or sheet membrane or preformed material having a thickness of not less than 6 mils not more than 1/2".
5. Construct sidewalks with Edge Beam through the limits of any surface mounted Pedestrian/Bicycle Railing or Pipe Guiderail shown in the plans. (See RAILING DETAIL)



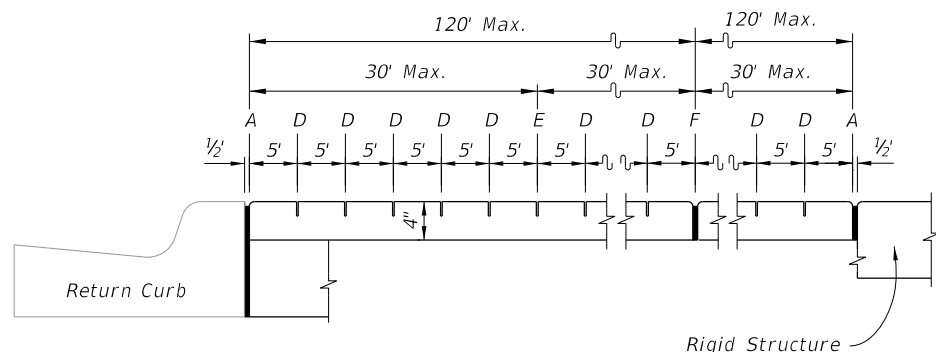
PLAN  
SIDEWALK WITH UTILITY STRIP



PLAN  
SIDEWALK WITHOUT UTILITY STRIP



OPEN JOINTS



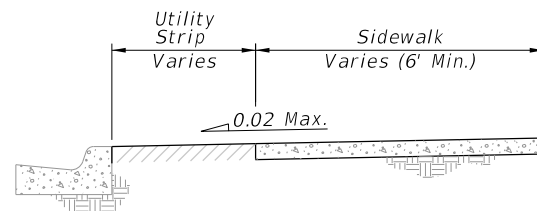
SAWED JOINTS

**LONGITUDINAL SECTION**

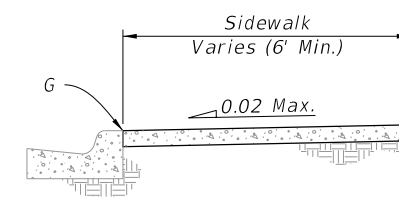
**LEGEND:**

- A- 1/2" Expansion Joints (Preformed Joint Filler) between the sidewalk and; driveways, sidewalk-intersections, and all other fixed objects (e.g. drainage inlets and utility poles).
- B- 1/8" Dummy Joints, Tooled
- C- 1/8" Formed Open Joints
- D- 3/16" Saw Cut Joints, 1 1/2" Deep (within 96 hours) Max. 5' Centers
- E- 3/16" Saw Cut Joints, 1 1/2" Deep (within 12 hours) Max. 30' Centers Joint(s) Required When Length Exceeds 30'
- F- 1/2" Expansion Joint When Run Of Sidewalk Exceeds 120'. Intermediate locations when called for in the plans or at locations as directed by the Engineer.
- G- Cold Joint With Bond Breaker, Tooled

- LEGEND:**
- 4" Thick Sidewalk
  - 6" Thick Sidewalk
  - Utility Strip

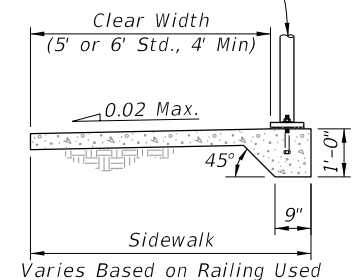


SECTION A-A



SECTION B-B

Railing (See Index 515-052, 515-062, 515-070 Or 515-080)




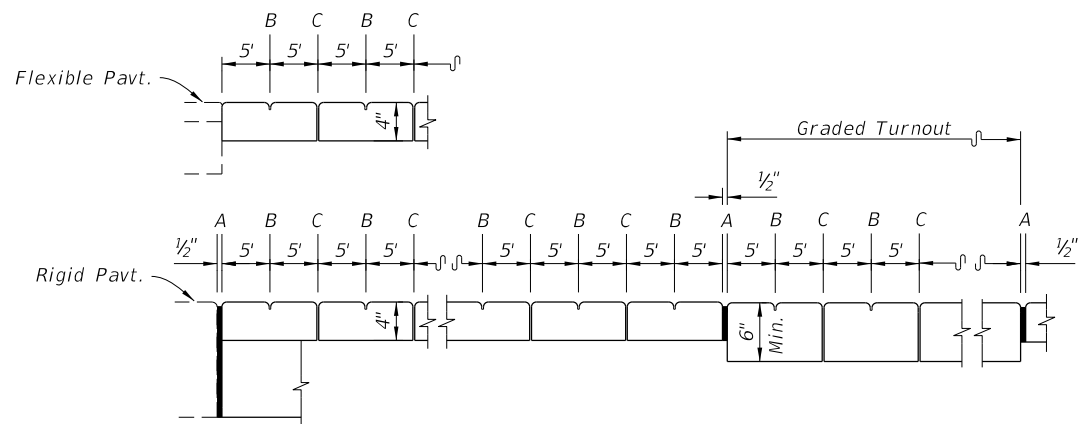
RAILING DETAIL

**SIDEWALK JOINTS**

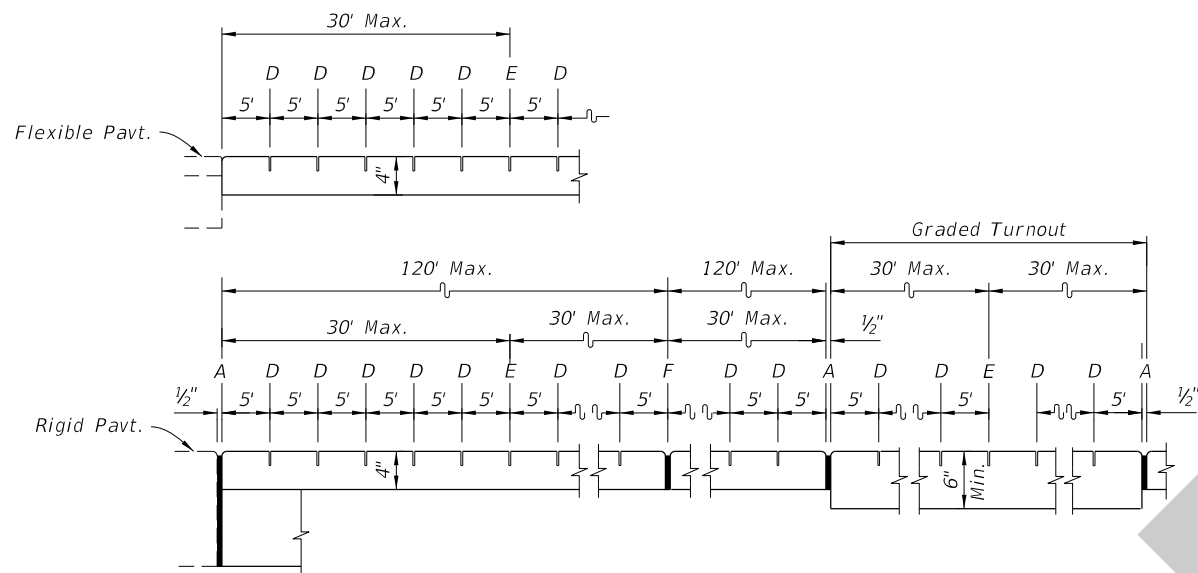
**GENERAL NOTES AND CONCRETE SIDEWALK ON CURBED ROADWAYS**

9/6/2018 6:46:12 AM

LAST REVISION 11/01/18	DESCRIPTION:	 FY 2019-20 STANDARD PLANS	CONCRETE SIDEWALK	INDEX 522-001	SHEET 1 of 2
---------------------------	--------------	--	-------------------	------------------	-----------------



OPEN JOINTS



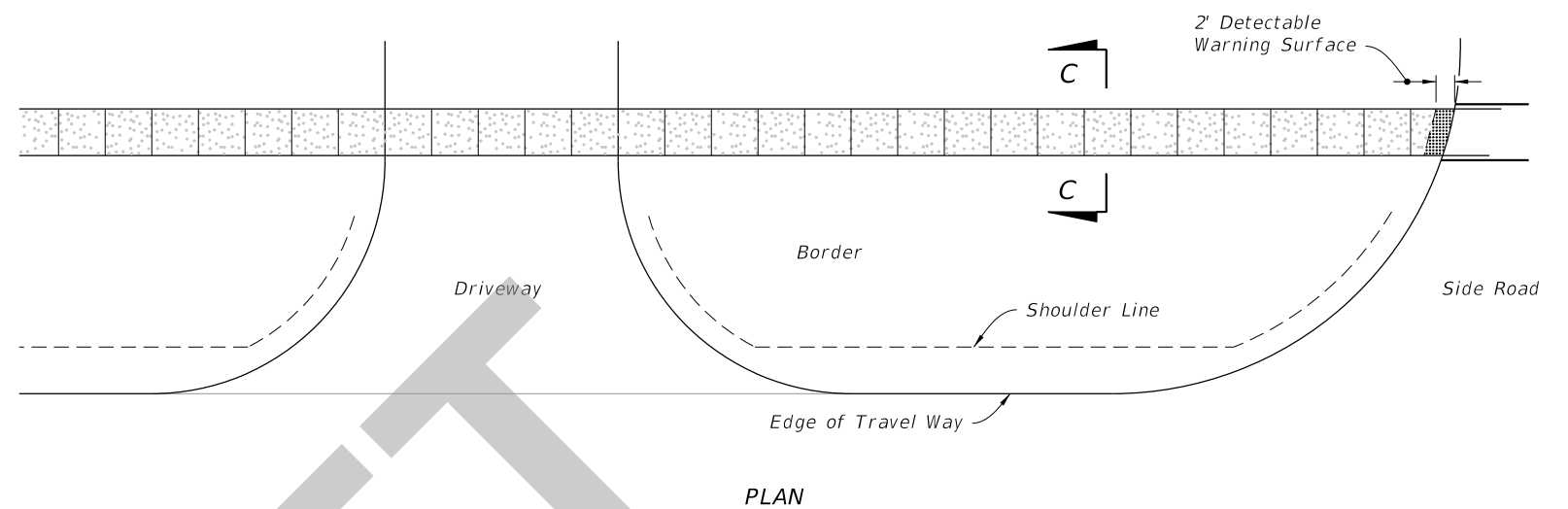
SAWED JOINTS

LONGITUDINAL SECTION

LEGEND:

- A- 1/2" Expansion Joints (Preformed Joint Filler) between the sidewalk and driveways, sidewalk-intersections, and all other fixed objects (e.g. drainage inlets and utility poles).
- B- 1/8" Dummy Joints, Tooled
- C- 1/8" Formed Open Joints
- D- 3/16" Saw Cut Joints, 1 1/2" Deep (within 96 hours) Max. 5' Centers
- E- 3/16" Saw Cut Joints, 1 1/2" Deep (within 12 hours) Max. 30' Centers  
Joint(s) Required When Length Exceeds 30'
- F- 1/2" Expansion Joint When Run Of Sidewalk Exceeds 120'. Intermediate locations when called for in the plans or at locations as directed by the Engineer.

SIDEWALK JOINTS

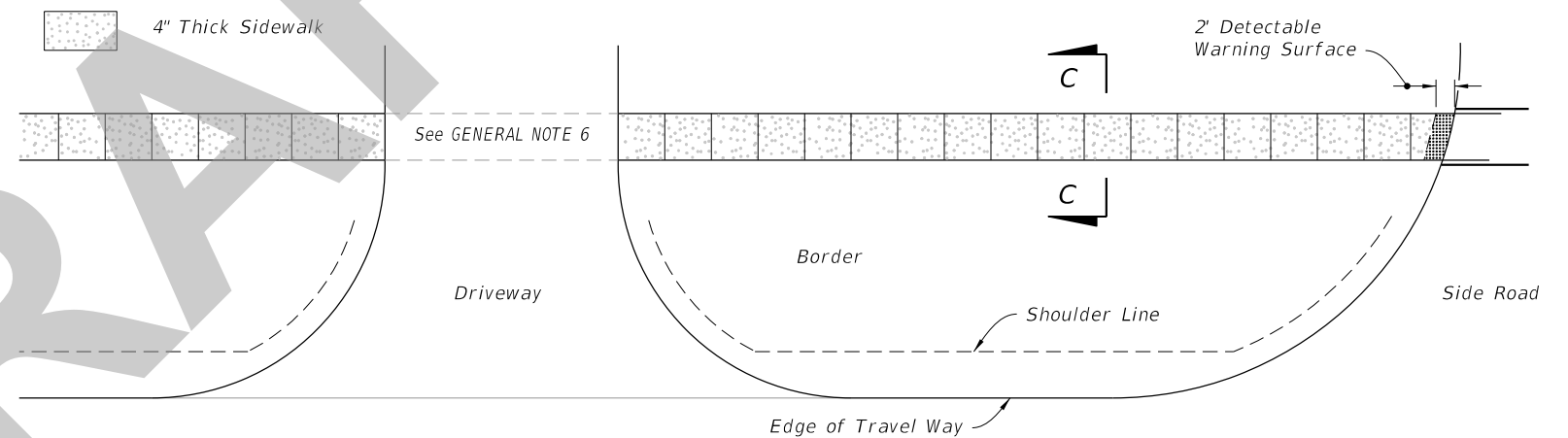


PLAN

CONTINUOUS SIDEWALK

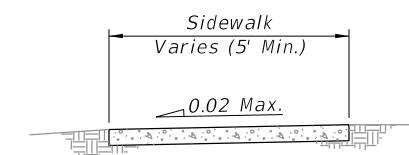
LEGEND:

4" Thick Sidewalk



PLAN

DISCONTINUOUS SIDEWALK



SECTION C-C

CONCRETE SIDEWALK ON FLUSH SHOULDER ROADWAYS

9/6/2018 6:46:12 AM

LAST REVISION	DESCRIPTION:
11/01/18	



FY 2019-20  
STANDARD PLANS

CONCRETE SIDEWALK

INDEX  
522-001

SHEET  
2 of 2