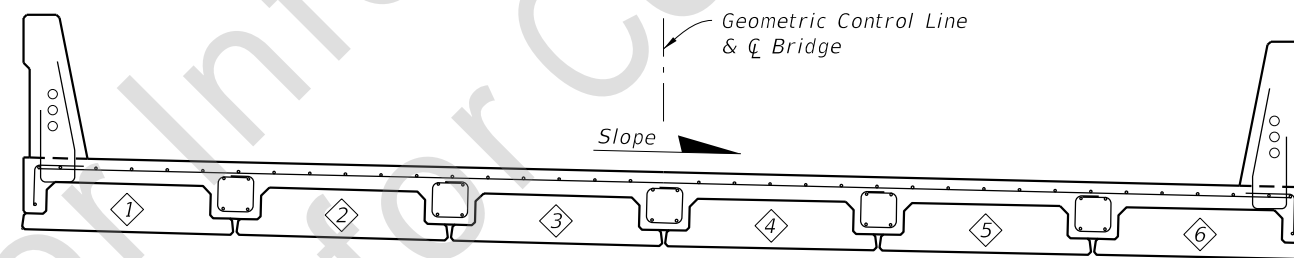


TYPICAL SECTION THRU SUPERSTRUCTURE WITH CROWN




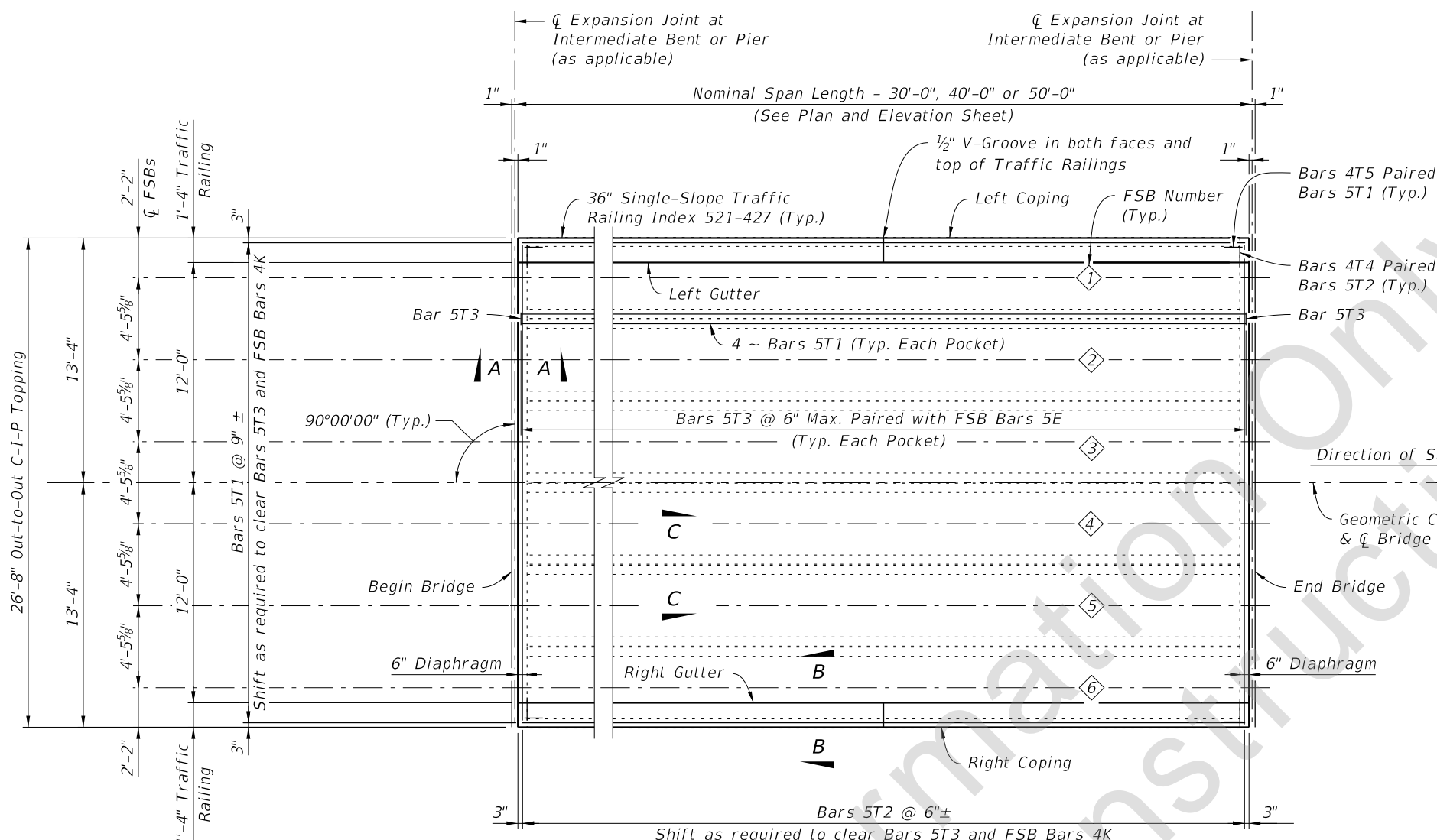
TYPICAL SECTION THRU SUPERSTRUCTURE WITH CONSTANT CROSS SLOPE  
(SEE SECTION WITH CROWN ABOVE FOR ALL INFORMATION NOT SHOWN IN THIS SECTION)

- NOTES:
1. See Structure Plans General Notes for Topping minimum thickness and cover.
  2. Work this Index with Developmental Index D400-300.

SUPERSTRUCTURE TYPICAL SECTION

11/11/2023 1:28:30 PM

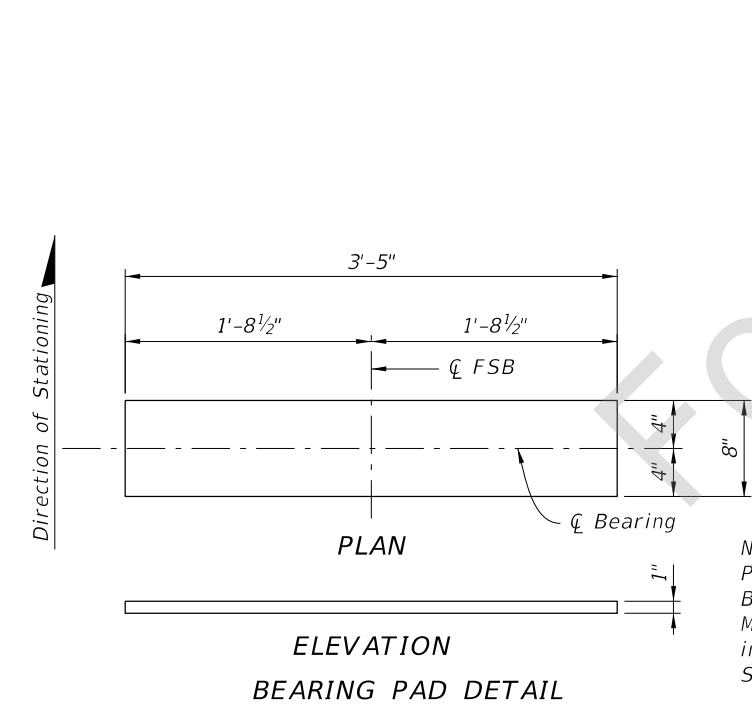
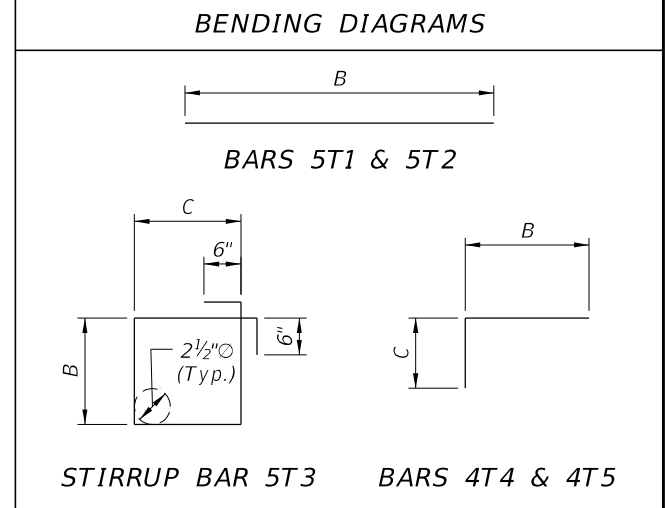
LAST REVISION 11/01/20	REVISION	DESCRIPTION:	 <b>DEVELOPMENTAL STANDARD PLANS</b>	<b>FSB SUPERSTRUCTURE PACKAGE</b> <b>24 FT. CLEAR WIDTH</b>	INDEX D400-324	SHEET 1 of 4
---------------------------	----------	--------------	---	--	-------------------	-----------------



**NOTES:**  
 1. All bar dimensions are out-to-out.  
 2. Field bend Bars 5T2 as needed to accommodate crown.

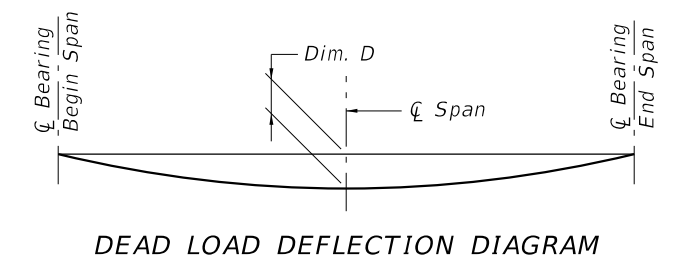
**CROSS REFERENCE:**  
 See Index D400-300, Sheet 2 for Sections A-A, B-B and C-C.

BILL OF REINFORCING STEEL FOR ONE SPAN ONLY						
NOMINAL SPAN LENGTH	MARK		LENGTH	NO. OF BARS	B	C
	SIZE	DES				
30'-0"	5	T1	29'-6"	58	29'-6"	
	5	T2	26'-4"	62	26'-4"	
	5	T3	4'-2"	300	9½"	9½"
	4	T4	2'-2"	120	1'-6"	8"
	4	T5	2'-6"	72	1'-6"	1'-0"
40'-0"	5	T1	39'-6"	58	39'-6"	
	5	T2	26'-4"	82	26'-4"	
	5	T3	4'-2"	400	9½"	9½"
	4	T4	2'-2"	160	1'-6"	8"
	4	T5	2'-6"	72	1'-6"	1'-0"
50'-0"	5	T1	49'-6"	58	49'-6"	
	5	T2	26'-4"	102	26'-4"	
	5	T3	4'-7"	500	1'-0"	9½"
	4	T4	2'-5"	200	1'-6"	11"
	4	T5	2'-9"	72	1'-6"	1'-3"



**NOTE:**  
 Provide plain elastomeric Bearing Pads with a Shear Modulus G = 110psi and in accordance with Specification Section 932.

FLORIDA SLAB BEAM - CAMBER AND DEFLECTION DATA TABLE			
SPAN LENGTH (ft.)	BEAM NO.	NET BEAM CAMBER (PRESTRESS - DEAD LOAD OF BEAM) @ 120 DAYS (in.)	DIM D DEAD LOAD DEFLECTION DUE TO TOPPING POUR @ 120 DAYS (in.)
30	1-6	3/8"	1/8"
40	1-6	7/8"	5/8"
50	1-6	1 1/8"	7/8"



**CAMBER NOTE:**  
 The values given in the table are based on theoretical beam cambers. The Contractor shall monitor beam cambers for the purpose of predicting camber values at the time of the topping casting. If the predicted cambers based on field measurements differ more than ± 1/2" from the theoretical "Net Beam Camber @ 120 Days" shown in the table, propose modified dimensions as required and submit to the Engineer for approval a minimum of 21 days prior to casting topping concrete.

**SUPERSTRUCTURE PLAN**

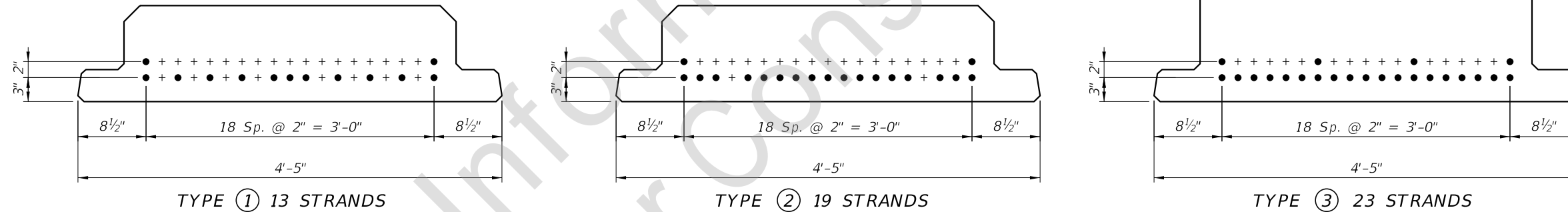
FLORIDA SLAB BEAM - TABLE OF VARIABLES

NOMINAL SPAN LENGTH	LOCATION BEAM NO.	BEAM TYPE	CONCRETE PROPERTIES		STND. PTRN. TYPE	PLAN VIEW CASE		ANGLE $\theta$		BEAM DIMENSIONS*			REINFORCING STEEL																						
			CLASS	STRENGTHS (psi)		END 1	END 2	END 1	END 2	DIM W	DIM L	DIM R	3C		4D1		4D2		4D3		5E1		5E2		6Y1		6Y2		4K		NO. OF BAR SPACES		BAR SPACING*		
				28 Day									Release	NO.	DIM C	DIM D	DIM D	NO.	DIM D	NO.	DIM E	NO.	DIM E	DIM Y	DIM Y	NO.	DIM E	NO.	DIM E	DIM Y	DIM Y	NO.	S1	S2	V1
30'	1,6	FSB 12x53	VI	8500	6800	1	1	1	90°	90°	4'-5"	28'-10 $\frac{1}{4}$ "	$\frac{1}{4}$ "	31	4'-0 $\frac{1}{2}$ "	2'-2 $\frac{1}{2}$ "	2'-2 $\frac{1}{2}$ "	24	2'-2 $\frac{1}{2}$ "	-	-	57	4'-1 $\frac{1}{2}$ "	3'-0 $\frac{1}{2}$ "	3'-0 $\frac{1}{2}$ "	84	1	8	1'-6"	1'-6"					
	2-5	FSB 12x53	VI	8500	6800	1	1	1	90°	90°	4'-5"	28'-10 $\frac{1}{4}$ "	$\frac{1}{4}$ "	31	4'-0 $\frac{1}{2}$ "	2'-2 $\frac{1}{2}$ "	2'-2 $\frac{1}{2}$ "	24	2'-2 $\frac{1}{2}$ "	57	4'-3"	-	-	3'-0 $\frac{1}{2}$ "	3'-0 $\frac{1}{2}$ "	84	1	8	1'-6"	1'-6"					
40'	1,6	FSB 12x53	VI	8500	6800	2	1	1	90°	90°	4'-5"	38'-10 $\frac{3}{8}$ "	$\frac{3}{8}$ "	41	4'-0 $\frac{1}{2}$ "	2'-2 $\frac{1}{2}$ "	2'-2 $\frac{1}{2}$ "	32	2'-2 $\frac{1}{2}$ "	-	-	77	4'-1 $\frac{1}{2}$ "	3'-0 $\frac{1}{2}$ "	3'-0 $\frac{1}{2}$ "	156	8	10	6"	1'-6"					
	2-5	FSB 12x53	VI	8500	6800	2	1	1	90°	90°	4'-5"	38'-10 $\frac{3}{8}$ "	$\frac{3}{8}$ "	41	4'-0 $\frac{1}{2}$ "	2'-2 $\frac{1}{2}$ "	2'-2 $\frac{1}{2}$ "	32	2'-2 $\frac{1}{2}$ "	77	4'-3"	-	-	3'-0 $\frac{1}{2}$ "	3'-0 $\frac{1}{2}$ "	156	8	10	6"	1'-6"					
50'	1,6	FSB 15x53	VI	8500	6800	3	1	1	90°	90°	4'-5"	48'-10 $\frac{1}{2}$ "	$\frac{1}{2}$ "	51	4'-0 $\frac{1}{2}$ "	2'-2 $\frac{1}{2}$ "	2'-2 $\frac{1}{2}$ "	44	2'-2 $\frac{1}{2}$ "	-	-	97	4'-1 $\frac{1}{2}$ "	3'-0 $\frac{1}{2}$ "	3'-0 $\frac{1}{2}$ "	148	4	13	1'-0"	1'-6"					
	2-5	FSB 15x53	VI	8500	6800	3	1	1	90°	90°	4'-5"	48'-10 $\frac{1}{2}$ "	$\frac{1}{2}$ "	51	4'-0 $\frac{1}{2}$ "	2'-2 $\frac{1}{2}$ "	2'-2 $\frac{1}{2}$ "	44	2'-2 $\frac{1}{2}$ "	97	4'-3"	-	-	3'-0 $\frac{1}{2}$ "	3'-0 $\frac{1}{2}$ "	148	4	13	1'-0"	1'-6"					

NOTE: Work this sheet with Standard Plans Index Series 450-450.

DIMENSION NOTES

\* All longitudinal slab beam dimensions shown on this sheet with a single asterisk (\*) are measured along the top of beam at the centerline. Dimension "R" is calculated at mid-height of the slab beam.



STRAND DESCRIPTION: Use 0.60" Diameter, Grade 270, Low Relaxation Carbon Steel Strands stressed at 44.0 kips each. Area per strand equals 0.217 sq. in.

STRAND DEBONDING LEGEND

● - fully bonded strands.

STRAND PATTERNS

11/9/2023 9:06:51 AM

LAST REVISION 11/01/23	REVISION	DESCRIPTION:		DEVELOPMENTAL STANDARD PLANS	FSB SUPERSTRUCTURE PACKAGE 24 FT. CLEAR WIDTH	INDEX D400-324	SHEET 3 of 4
---------------------------	----------	--------------	--	------------------------------	--	-------------------	-----------------

Table 2 - LRFR - Load Rating Summary Details for Prestressed Concrete Bridges (Flat Slab and Deck/Girder)

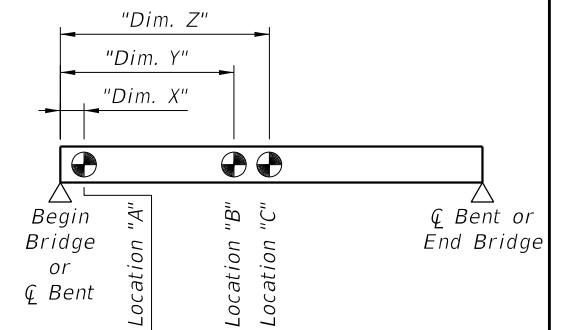
Span Length (Ft)	Level	Limit State	Vehicle	Weight (tons)	Load Factors			Moment (Strength) or Stress (Service)					Shear (Strength)					Comments:
					LL	DC	DW	Distribution Factor (DF)	Rating Factor	Tons	Location	Dimension (Ft)	Distribution Factor (DF)	Rating Factor	Tons	Location	Dimension (Ft)	
<b>Superstructure - Environmental Classification: Slightly Aggressive</b>																		
30	Design Load Rating	Strength I (Inv)	HL-93	N/A	1.75	1.25	1.50	0.42	1.78	N/A	C	14.53	0.65	4.30	N/A	A	2.60	Exterior Beam
		Strength I (Op)	HL-93	N/A	1.35	1.25	1.50	0.42	2.31	N/A	C	14.53	0.65	5.58	N/A	A	2.60	Exterior Beam
		Service III (Inv)	HL-93	N/A	0.80	1.00	1.00	0.42	2.11	N/A	C	14.53	N/A	N/A	N/A	N/A	N/A	Exterior Beam
	Permit Load Rating	Strength II	FL120	60.0	1.35	1.25	1.50	0.42	1.96	117.52	B	11.75	0.65	3.78	226.97	A	2.60	Exterior Beam
40	Design Load Rating	Strength I (Inv)	HL-93	N/A	1.75	1.25	1.50	0.40	1.59	N/A	C	19.33	0.63	4.53	N/A	A	5.36	Exterior Beam
		Strength I (Op)	HL-93	N/A	1.35	1.25	1.50	0.40	2.06	N/A	C	19.33	0.63	5.87	N/A	A	5.36	Exterior Beam
		Service III (Inv)	HL-93	N/A	0.80	1.00	1.00	0.40	1.52	N/A	C	19.71	N/A	N/A	N/A	N/A	N/A	Exterior Beam
	Permit Load Rating	Strength II	FL120	60.0	1.35	1.25	1.50	0.40	1.54	92.41	B	18.57	0.63	4.04	242.44	A	5.36	Exterior Beam
50	Design Load Rating	Strength I (Inv)	HL-93	N/A	1.75	1.25	1.50	0.38	1.51	N/A	C	24.13	0.62	4.53	N/A	A	2.64	Exterior Beam
		Strength I (Op)	HL-93	N/A	1.35	1.25	1.50	0.38	1.95	N/A	C	24.13	0.62	5.87	N/A	A	2.64	Exterior Beam
		Service III (Inv)	HL-93	N/A	0.80	1.00	1.00	0.38	1.42	N/A	C	24.13	N/A	N/A	N/A	N/A	N/A	Exterior Beam
	Permit Load Rating	Strength II	FL120	60.0	1.35	1.25	1.50	0.38	1.45	86.84	B	24.13	0.62	4.20	251.70	A	2.64	Exterior Beam
<b>Superstructure - Environmental Classification: Moderately/Extremely Aggressive</b>																		
30	Design Load Rating	Strength I (Inv)	HL-93	N/A	1.75	1.25	1.50	0.42	1.84	N/A	C	14.53	0.65	4.30	N/A	A	2.60	Exterior Beam
		Strength I (Op)	HL-93	N/A	1.35	1.25	1.50	0.42	2.38	N/A	C	14.53	0.65	5.58	N/A	A	2.60	Exterior Beam
		Service III (Inv)	HL-93	N/A	0.80	1.00	1.00	0.42	1.73	N/A	C	14.53	N/A	N/A	N/A	N/A	N/A	Exterior Beam
	Permit Load Rating	Strength II	FL120	60.0	1.35	1.25	1.50	0.42	2.02	121.09	B	11.75	0.65	3.78	226.97	A	2.60	Exterior Beam
40	Design Load Rating	Strength I (Inv)	HL-93	N/A	1.75	1.25	1.50	0.40	1.68	N/A	C	19.33	0.63	4.53	N/A	A	5.36	Exterior Beam
		Strength I (Op)	HL-93	N/A	1.35	1.25	1.50	0.40	2.18	N/A	C	19.33	0.63	5.87	N/A	A	5.36	Exterior Beam
		Service III (Inv)	HL-93	N/A	0.80	1.00	1.00	0.40	1.25	N/A	C	19.71	N/A	N/A	N/A	N/A	N/A	Exterior Beam
	Permit Load Rating	Strength II	FL120	60.0	1.35	1.25	1.50	0.40	1.63	97.93	B	18.57	0.63	4.04	242.44	A	5.36	Exterior Beam
50	Design Load Rating	Strength I (Inv)	HL-93	N/A	1.75	1.25	1.50	0.38	1.62	N/A	C	24.13	0.62	4.53	N/A	A	2.64	Exterior Beam
		Strength I (Op)	HL-93	N/A	1.35	1.25	1.50	0.38	2.11	N/A	C	24.13	0.62	5.87	N/A	A	2.64	Exterior Beam
		Service III (Inv)	HL-93	N/A	0.80	1.00	1.00	0.38	1.14	N/A	C	24.13	N/A	N/A	N/A	N/A	N/A	Exterior Beam
	Permit Load Rating	Strength II	FL120	60.0	1.35	1.25	1.50	0.38	1.56	93.58	B	24.13	0.62	4.20	251.70	A	2.64	Exterior Beam

- NOTES:
1. Permit capacity is determined by using the permit vehicle in all lanes.
  2. Service III Design Inventory tensile stress limits:  
 $3\sqrt{f'c}$  (Moderately/Extremely Aggressive)  
 $6\sqrt{f'c}$  (Slightly Aggressive)
  3. Meets AASHTO LRFD Specifications Article 5.8.3.5 longitudinal reinforcement criteria.

Abbreviations:

Inv - Inventory

Op - Operating



RATING LOCATIONS

11/30/2023 1:59:21 PM