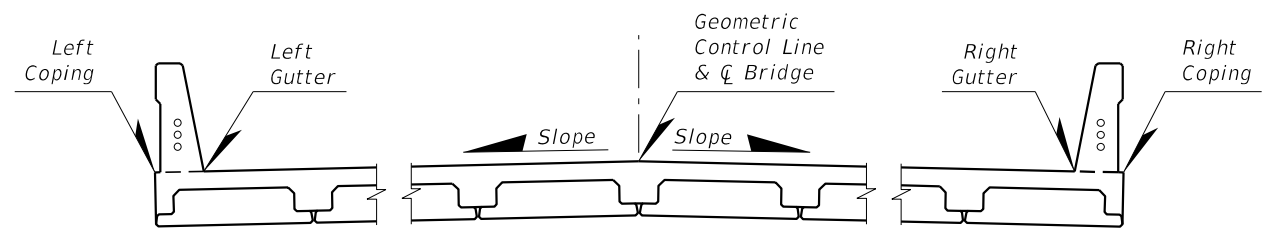


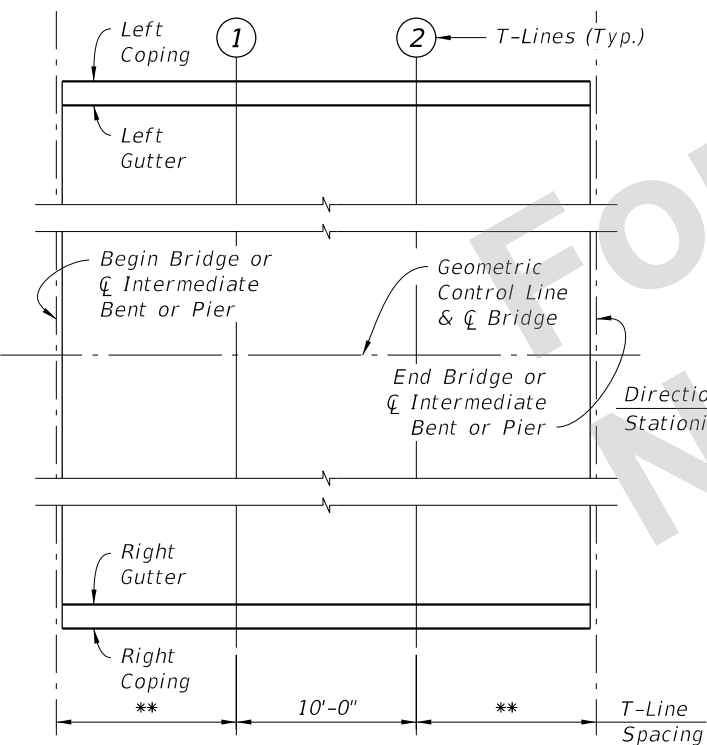
20'-0" TYPICAL APPROACH SLAB

30'-0" TYPICAL APPROACH SLAB

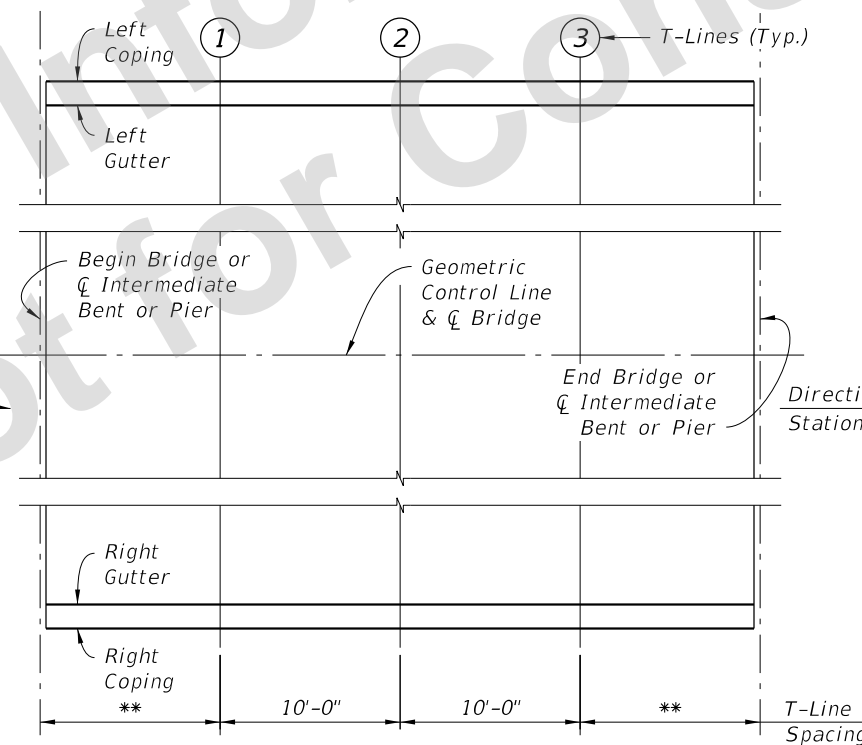


FINISH GRADE ELEVATION POINTS  
TYPICAL SECTION SHOWN THRU BRIDGE  
(Crown Section Shown, Constant Slope Similar)  
(Approach Slab Section Similar)

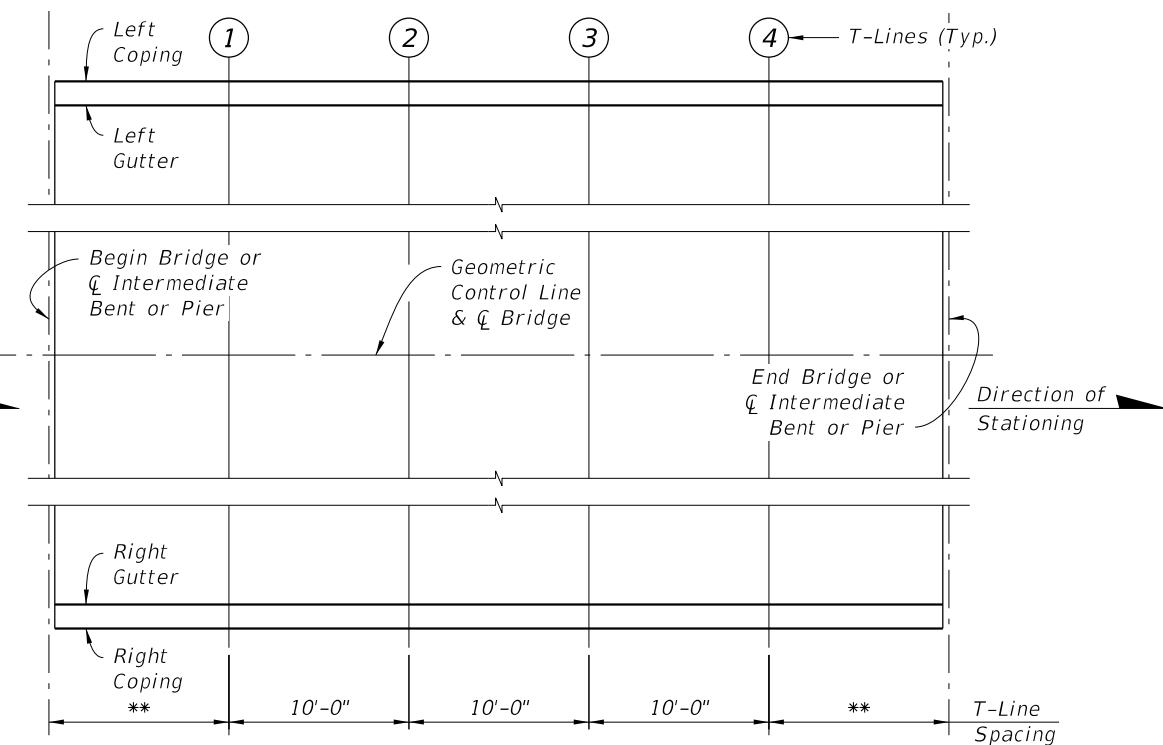
NOTES:  
For Elevations, see Finish Grade Elevation Sheets  
in the Structure Plans.  
\*\*10'-1" at Single Span Bridge,  
10'-0 1/2" at End Span of Multi-Span Bridge,  
10'-0" at Intermediate Span of Multi-Span Bridge.



30'-0" TYPICAL BRIDGE SPAN



40'-0" TYPICAL BRIDGE SPAN



50'-0" TYPICAL BRIDGE SPAN

FINISH GRADE ELEVATION

SDATES

LAST REVISION 11/01/20	DESCRIPTION:
---------------------------	--------------

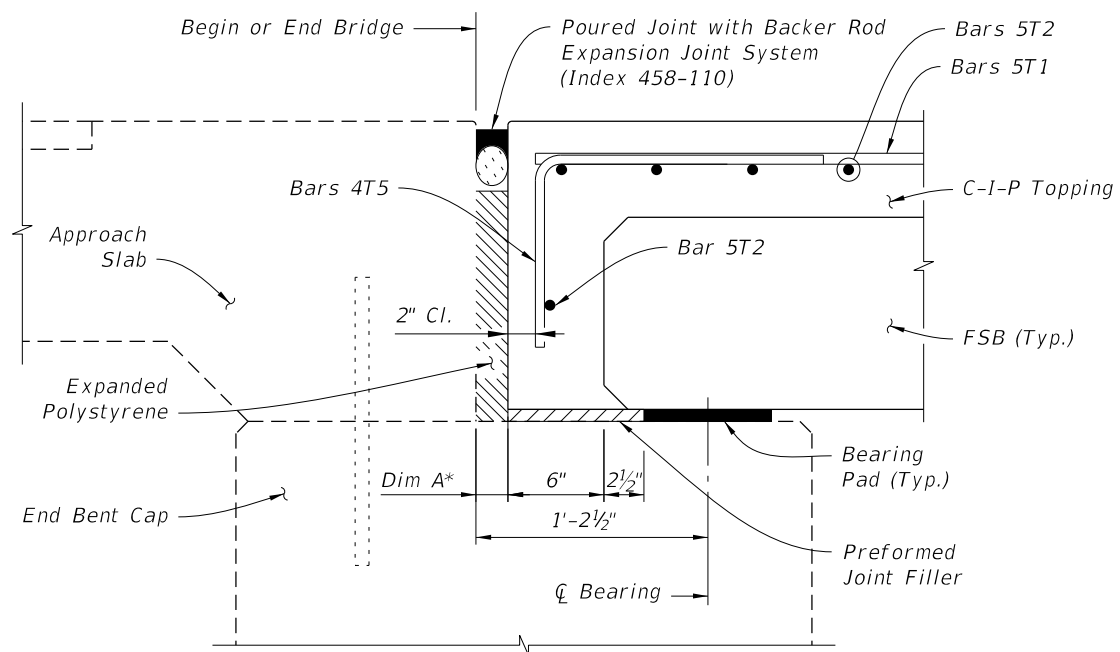


DEVELOPMENTAL  
STANDARD PLANS

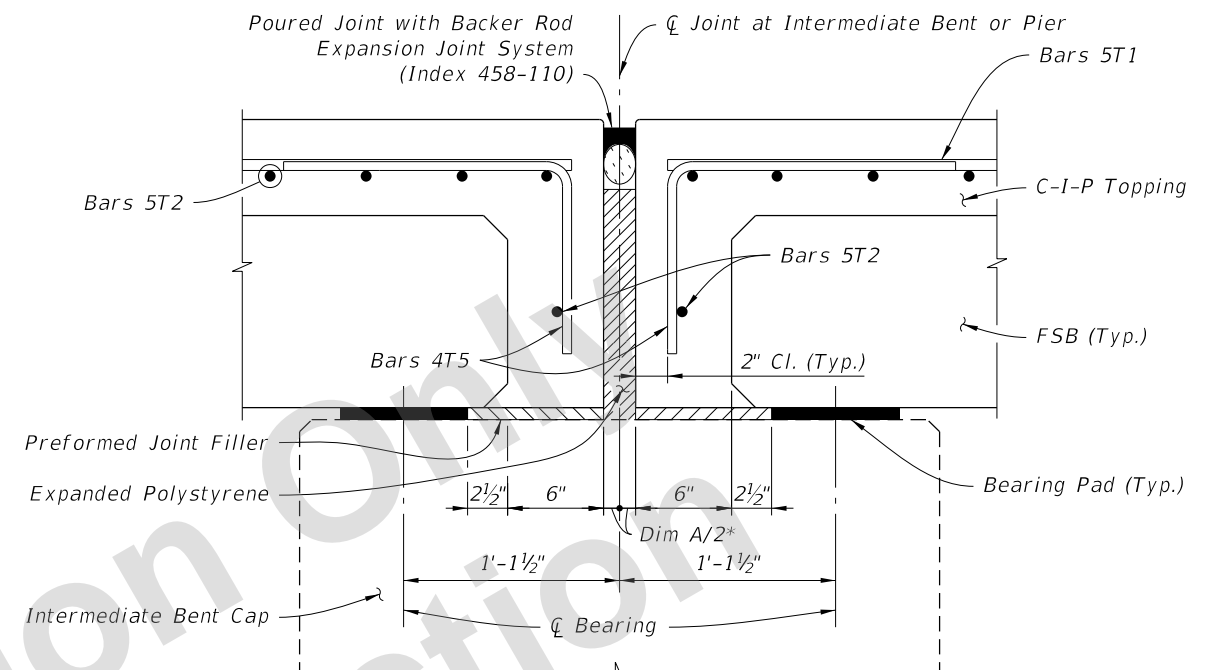
FSB SUPERSTRUCTURE PACKAGE

INDEX  
D400-300

SHEET  
1 of 2

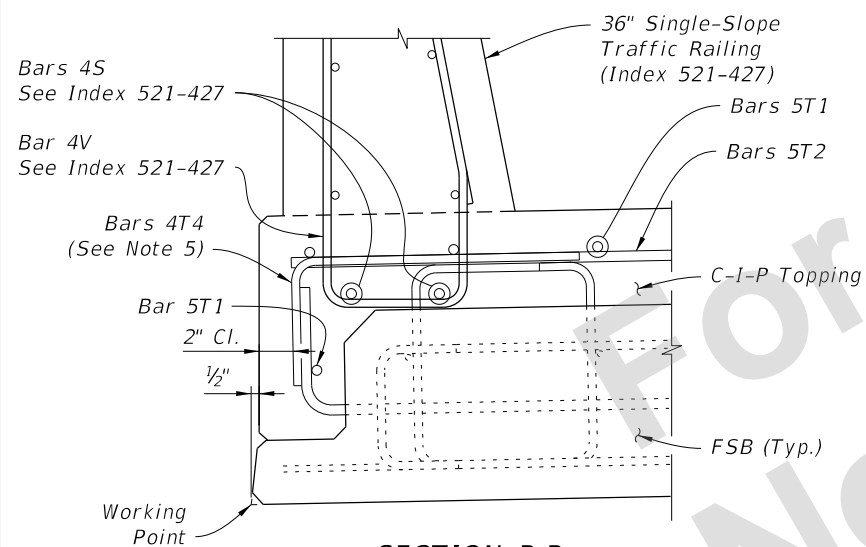


**AT BEGIN/END BRIDGE ALONG CL BEAM**  
(REINFORCING WITHIN FSB NOT SHOWN FOR CLARITY)

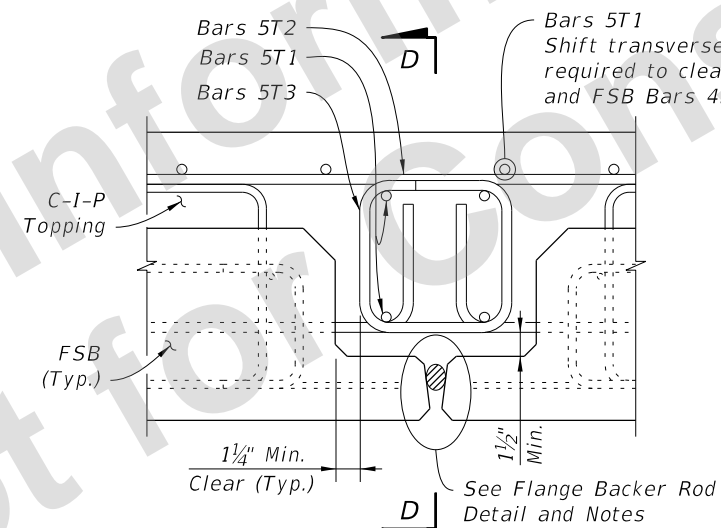


**AT INTERMEDIATE BENTS ALONG CL BEAM**  
(REINFORCING WITHIN FSB NOT SHOWN FOR CLARITY)

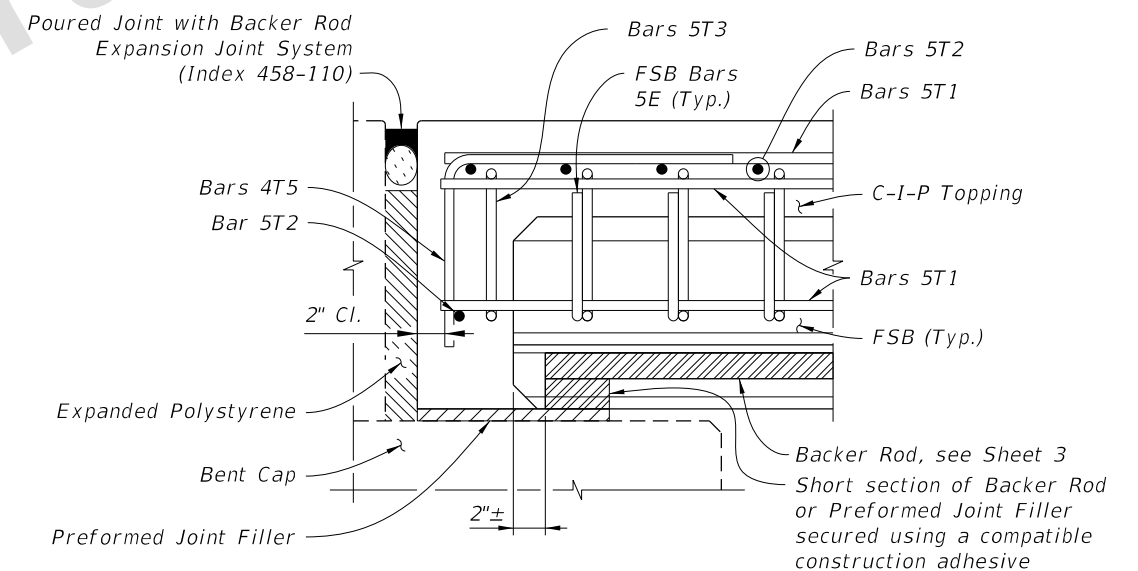
**SECTION A-A**



**SECTION B-B**



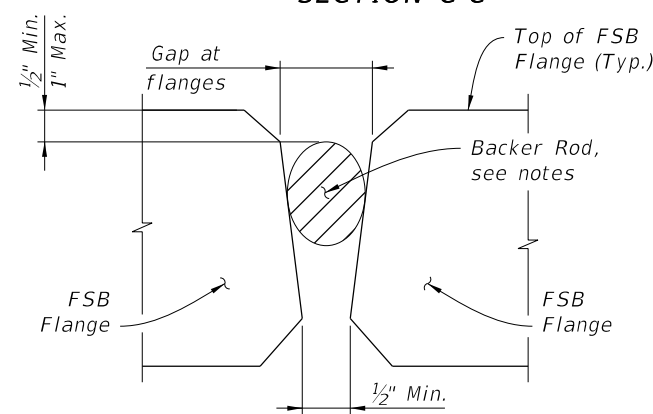
**SECTION C-C**



**SECTION D-D AT SPAN END**  
(SPAN END @ BEGIN/END BRIDGE SHOWN;  
SPAN END @ INTERMEDIATE BENT SIMILAR)

**FLANGE BACKER ROD NOTES:**

1. Use a Backer Rod to form the bottom of the cast in place topping at the gap between adjacent FSBs. Use a Backer Rod meeting the requirements of ASTM C1330 or ASTM D5249, Types 1 or 3, with a minimum uncompressed diameter 50% larger than the field verified maximum width of the gap between adjacent FSBs. Measure gap at the top of the flanges as shown in the Backer Rod Detail.
2. Install the Backer Rod from the top down to the position shown in the Backer Rod Detail.
3. Secure the backer rod with a compatible construction adhesive to create a mortar tight seal and prevent backer rod displacement during concrete placement.
4. The Backer Rod may remain in place after topping concrete placement.
5. When the Optional Exterior Beam is used, Bars 4T4 are not required.



**FLANGE BACKER ROD DETAIL**

POURED EXPANSION JOINT DATA TABLE INDEX 458-110		
LOCATION	DIM. "A" @ 70°F	DIM. "A" ADJUSTMENT PER 10°F
Typical	2"	0"

**NOTE:**  
Dim. "A" adjustment per 10°F shown is measured perpendicular to CL Expansion Joint. Work this Table with Standard Plans Index 458-110.

**CROSS REFERENCE::**  
For location of Section A-A, B-B and C-C, See Indexes D400-315, D400-324, D400-328, D400-332 and D400-340.  
For Optional Exterior Beam Details, See Index 450-451, 450-452, or 450-453.

**SUPERSTRUCTURE DETAILS**

SDATES

LAST REVISION	DESCRIPTION:
11/01/20	



**DEVELOPMENTAL  
STANDARD PLANS**

**FSB SUPERSTRUCTURE PACKAGE**

INDEX  
**D400-300**

SHEET  
**2 of 2**