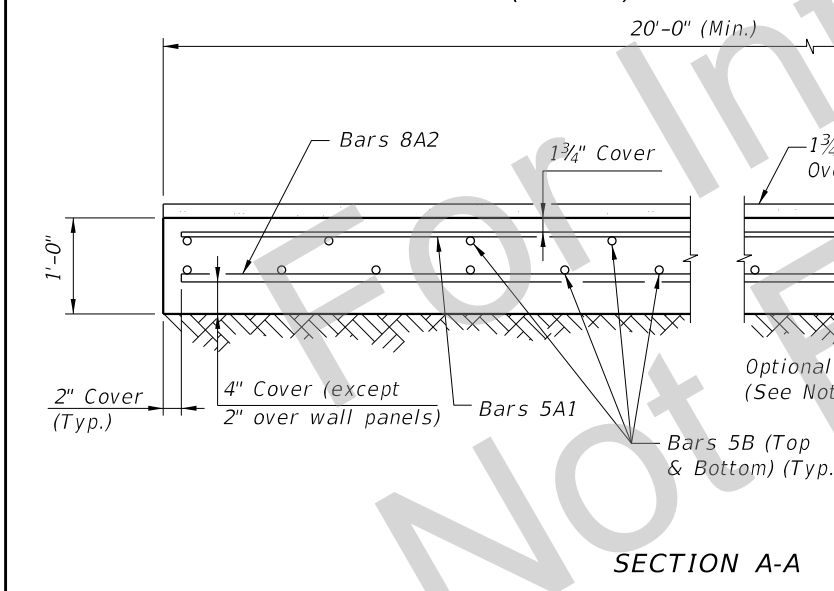
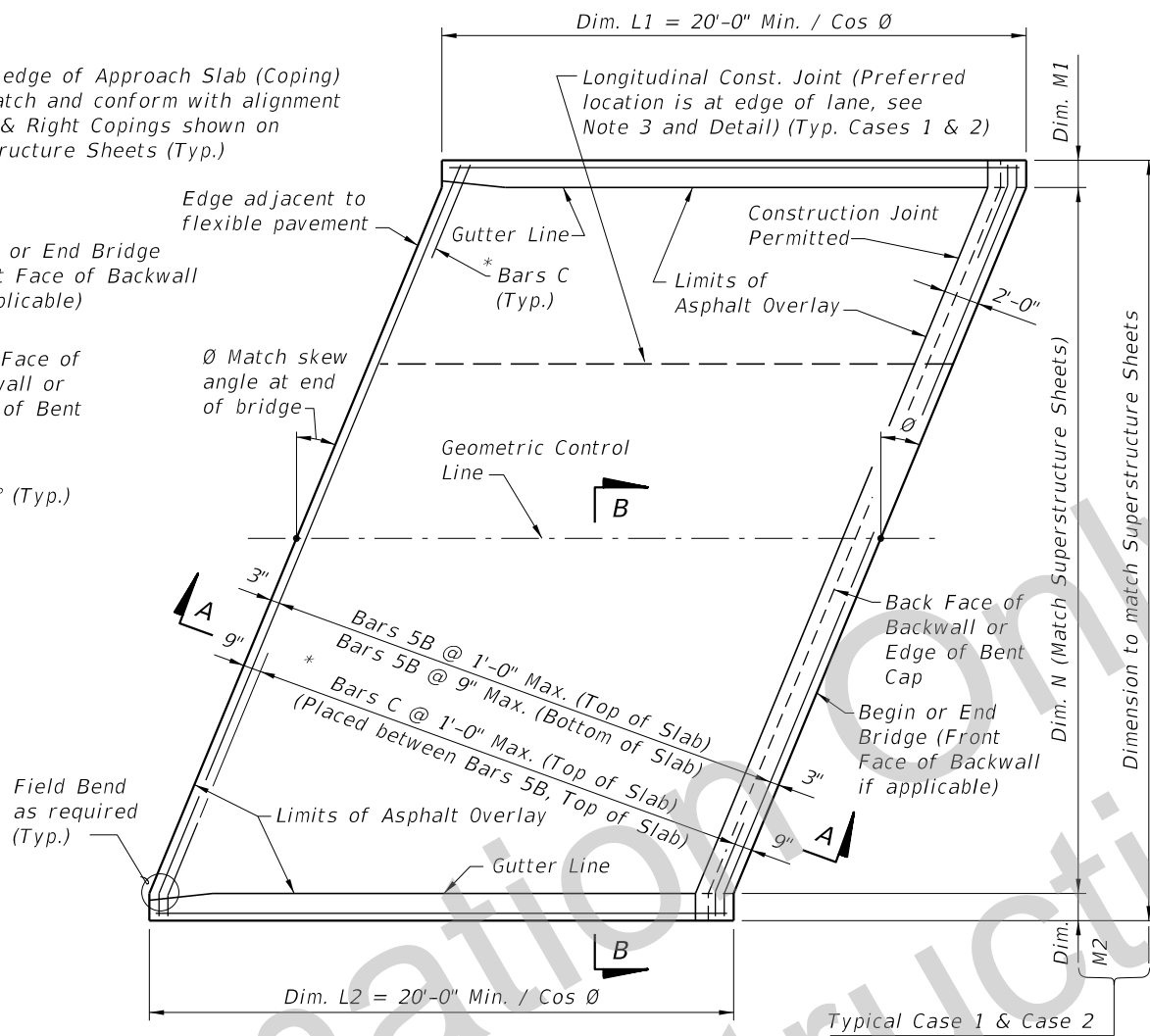


PLAN VIEW (CASE 1)

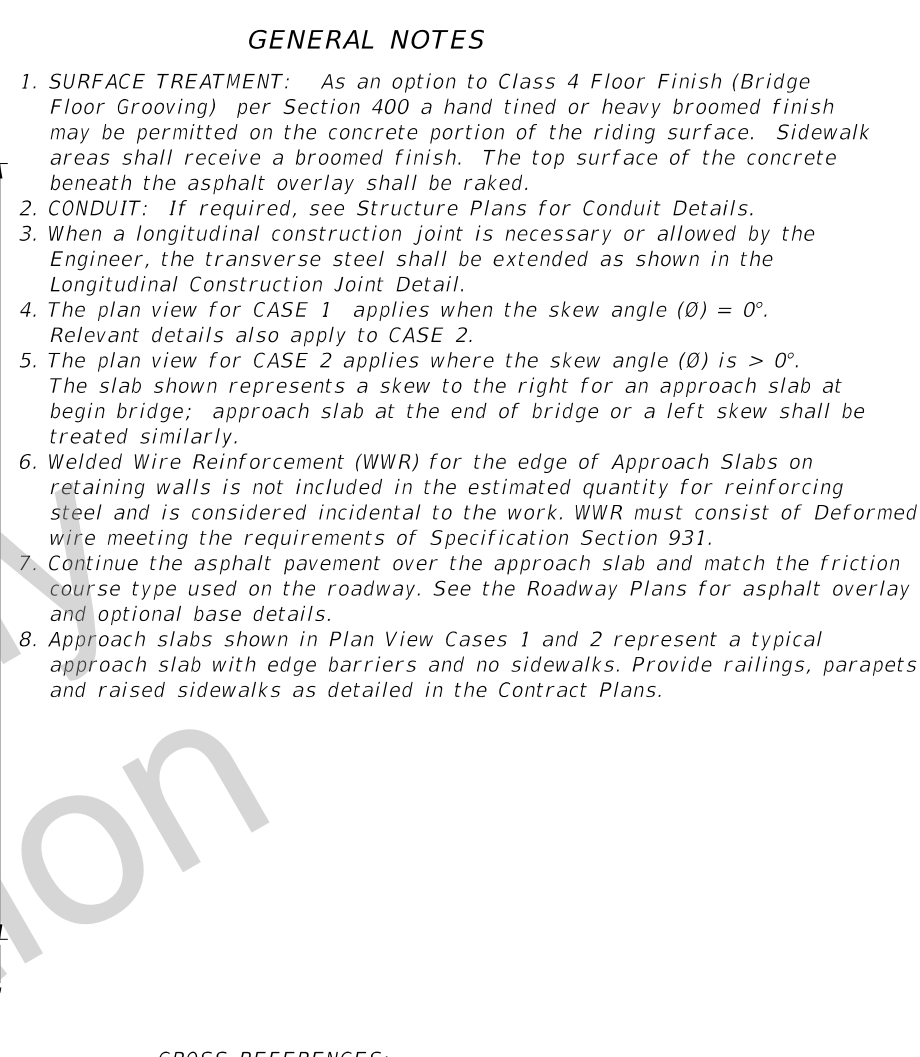


SECTION A-A



PLAN VIEW (CASE 2)

* NOTE: Bars C are required as shown when either a Traffic Railing or the Traffic Railing/Noise Wall are used at the edge of the Approach Slab.



CROSS REFERENCES:

For Section B-B, Longitudinal Construction Joint Detail and Approach Slab Details see Sheet 2.

SDATES

LAST REVISION	DESCRIPTION:
10/01/16	

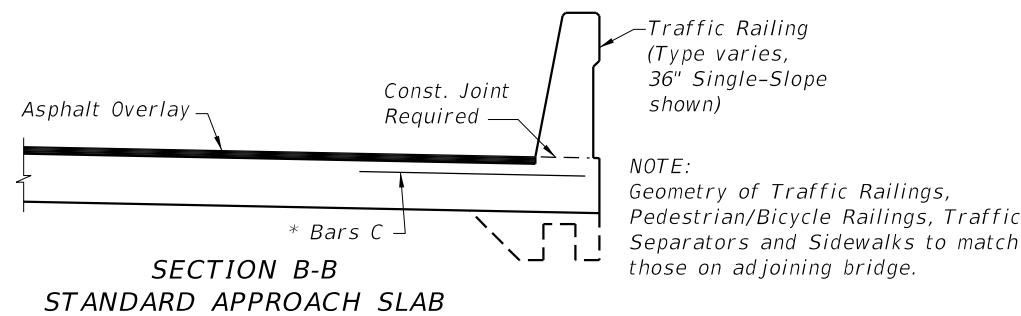


DEVELOPMENTAL STANDARD PLANS

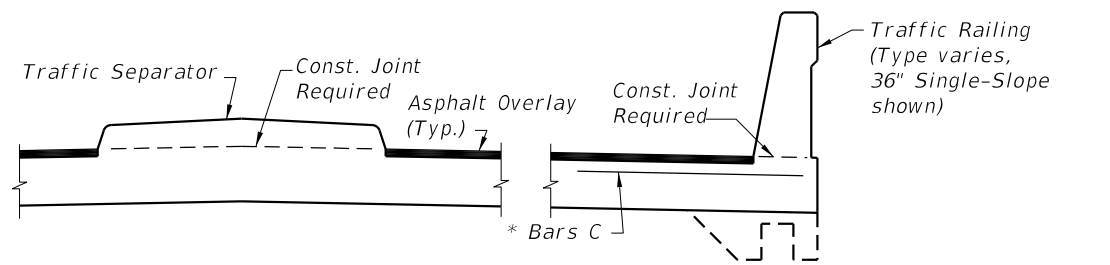
APPROACH SLABS (20 FT.) (FLEXIBLE PAVEMENT APPROACHES)

INDEX D400-092

SHEET 1 of 2

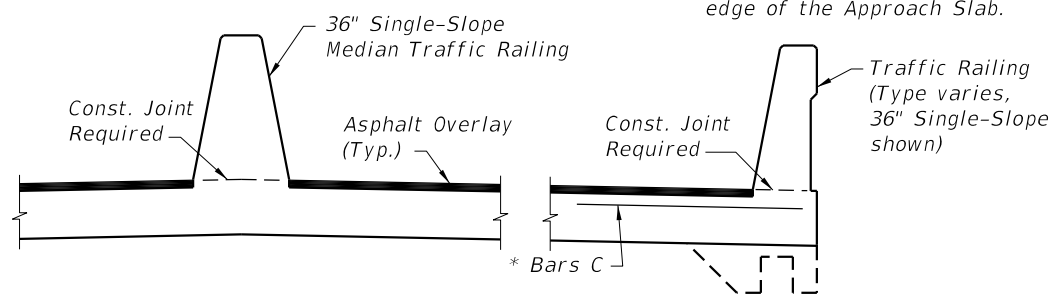


**SECTION B-B
STANDARD APPROACH SLAB**

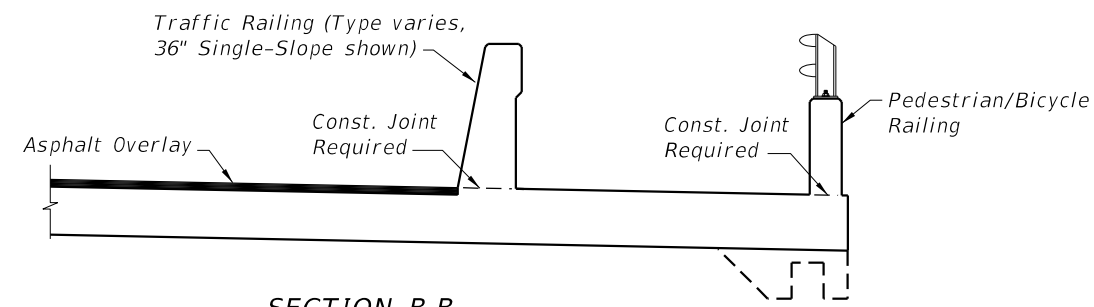


**SECTION B-B
APPROACH SLAB WITH TRAFFIC SEPARATOR**

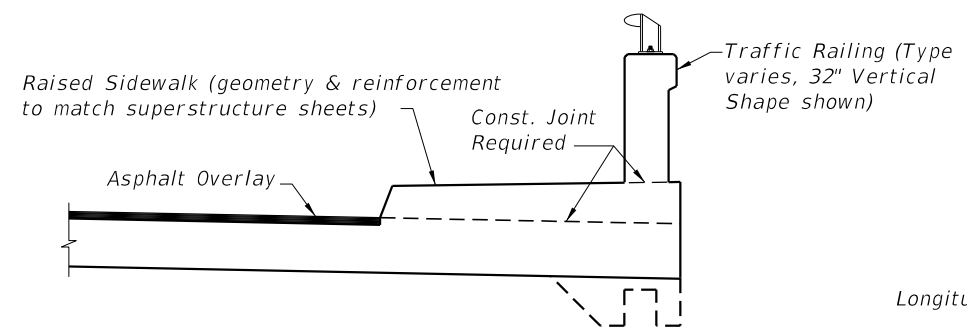
*NOTE: Bars C are required as shown when the 36" or 42" Single-Slope Traffic Railing, or the Traffic Railing/Noise Wall, are used at the edge of the Approach Slab.



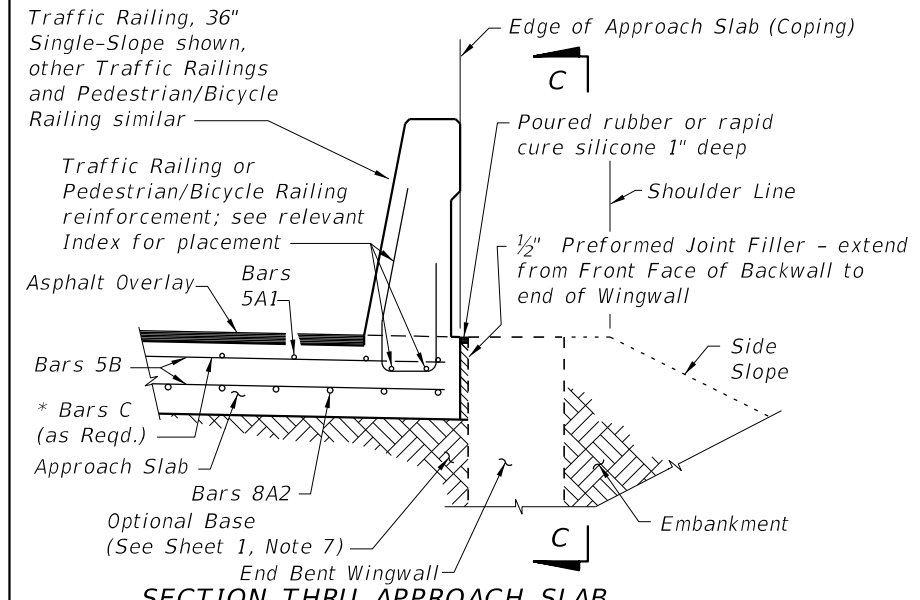
**SECTION B-B
APPROACH SLAB WITH MEDIAN TRAFFIC RAILING**



**SECTION B-B
APPROACH SLAB WITH SIDEWALK**

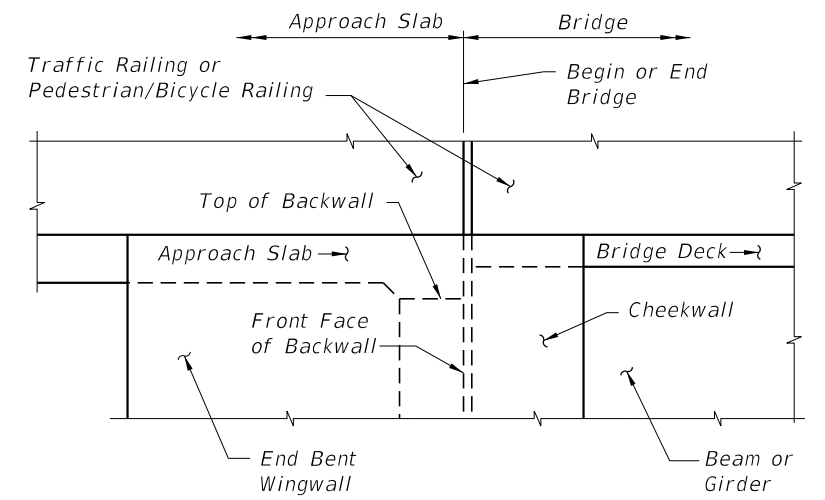


**SECTION B-B
APPROACH SLAB WITH RAISED SIDEWALK**

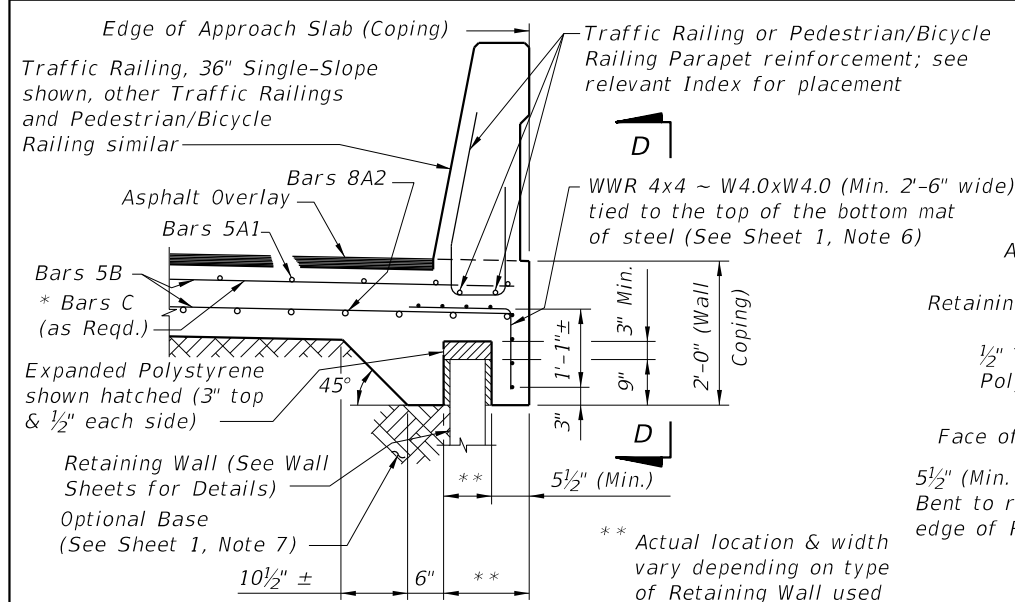


**SECTION THRU APPROACH SLAB
AND END BENT WINGWALL**

APPROACH SLAB WITH WINGWALL DETAILS

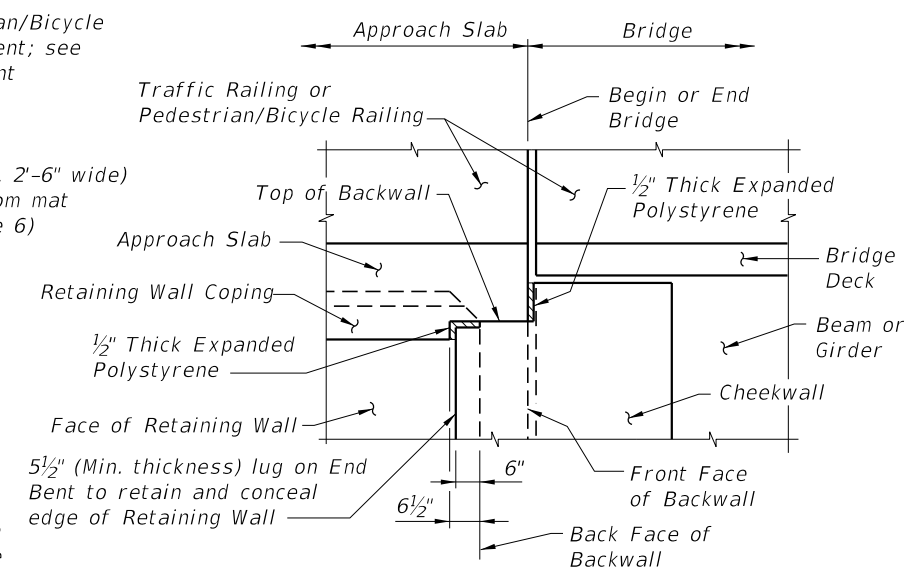


VIEW C-C AT BEGIN OR END BRIDGE (BEAM BRIDGE SHOWN, FLAT SLAB BRIDGE SIMILAR)

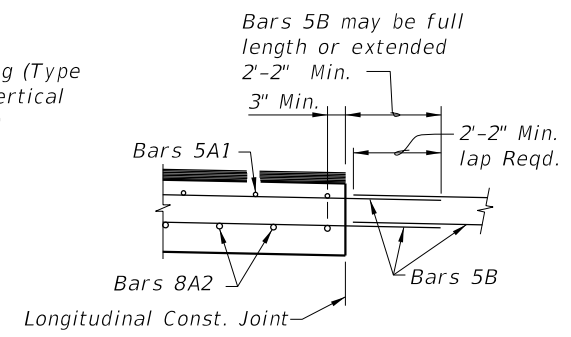


**SECTION THRU APPROACH SLAB
AND RETAINING WALL**

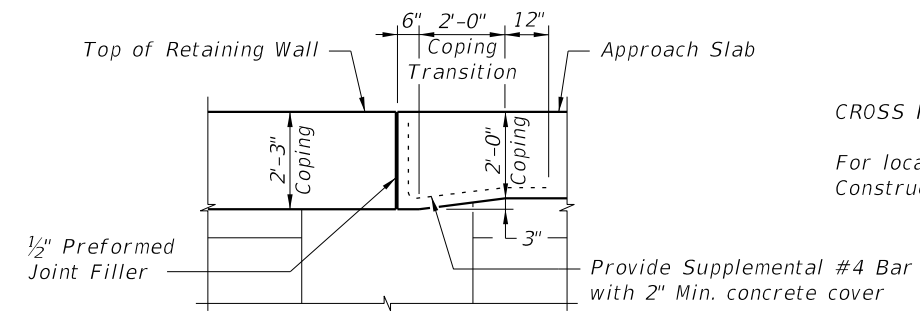
APPROACH SLAB WITH RETAINING WALL DETAILS



VIEW D-D AT BEGIN OR END BRIDGE (BEAM BRIDGE SHOWN, FLAT SLAB BRIDGE SIMILAR)



**LONGITUDINAL CONSTRUCTION
JOINT DETAIL**



**COPING TRANSITION DETAIL FOR
RETAINING WALLS WITH 2'-3\"/>**

CROSS REFERENCES:
For location of Section B-B and Longitudinal Construction Joint see Sheet 1.

SDATES

LAST REVISION 05/01/18	DESCRIPTION:
---------------------------	--------------