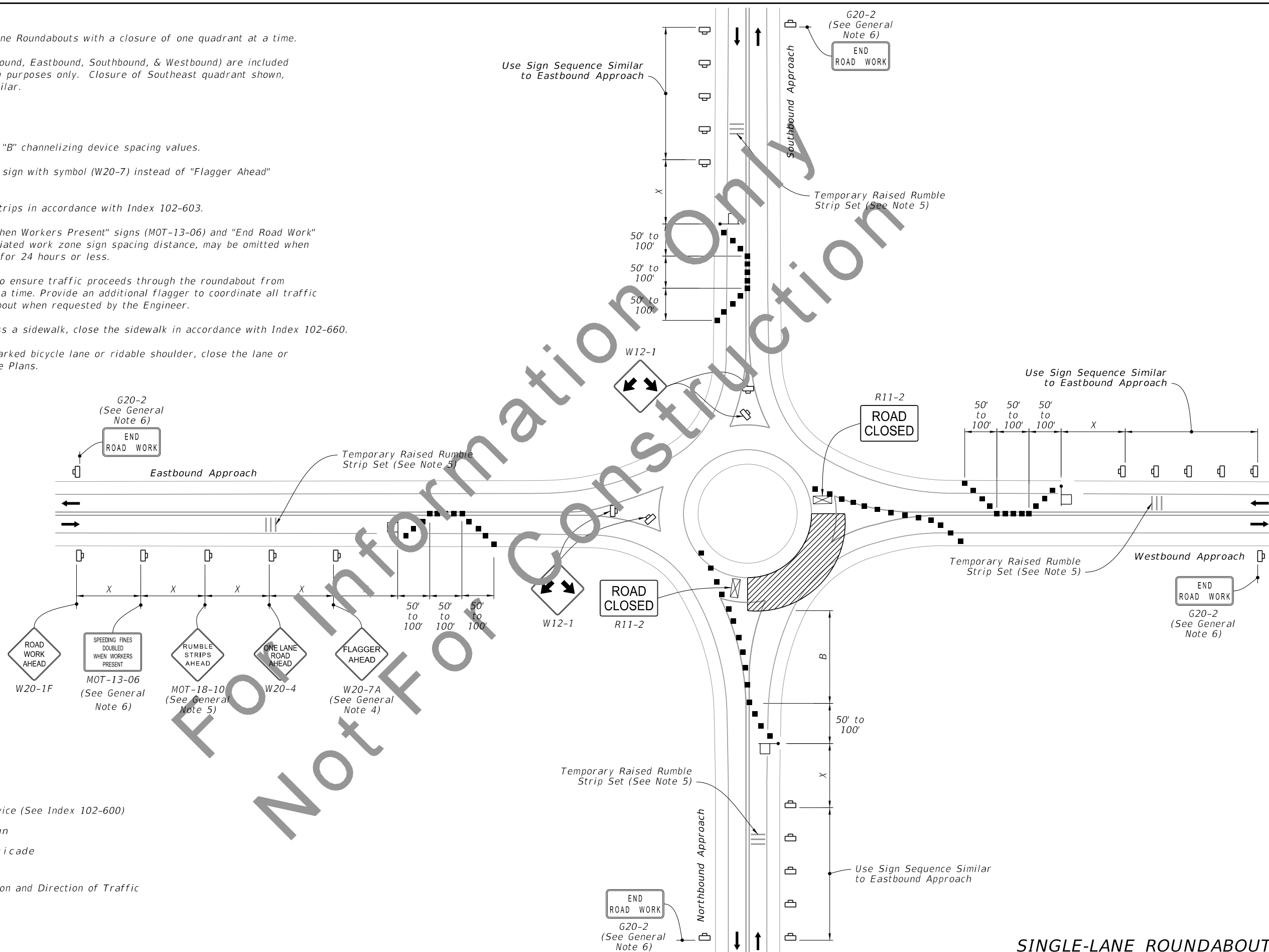


GENERAL NOTES:

1. This Index applies to Single-Lane Roundabouts with a closure of one quadrant at a time.
2. Cardinal directions (i.e., Northbound, Eastbound, Southbound, & Westbound) are included for illustrative and referencing purposes only. Closure of Southeast quadrant shown, closure of other quadrants similar.
3. L = Taper Length
B = Buffer Length
X = Work Zone Sign Spacing
See Index 102-600 for "X" and "B" channelizing device spacing values.
4. Optionally, use "Flagger Ahead" sign with symbol (W20-7) instead of "Flagger Ahead" sign with text (W20-7A).
5. Use temporary raised rumble strips in accordance with Index 102-603.
6. The "Speeding Fines Doubled When Workers Present" signs (MOT-13-06) and "End Road Work" signs (G20-2), along with associated work zone sign spacing distance, may be omitted when the work zone will be in place for 24 hours or less.
7. Coordinate flagging operation to ensure traffic proceeds through the roundabout from only one approach direction at a time. Provide an additional flagger to coordinate all traffic movements through the roundabout when requested by the Engineer.
8. If the work area extends across a sidewalk, close the sidewalk in accordance with Index 102-660.
9. If the work encroaches on a marked bicycle lane or rideable shoulder, close the lane or shoulder in accordance with the Plans.



SYMBOLS:

- Work Area
- Channelizing Device (See Index 102-600)
- Work Zone Sign
- Type III Barricade
- Flagger
- Lane Identification and Direction of Traffic

Not For Information Only Construction

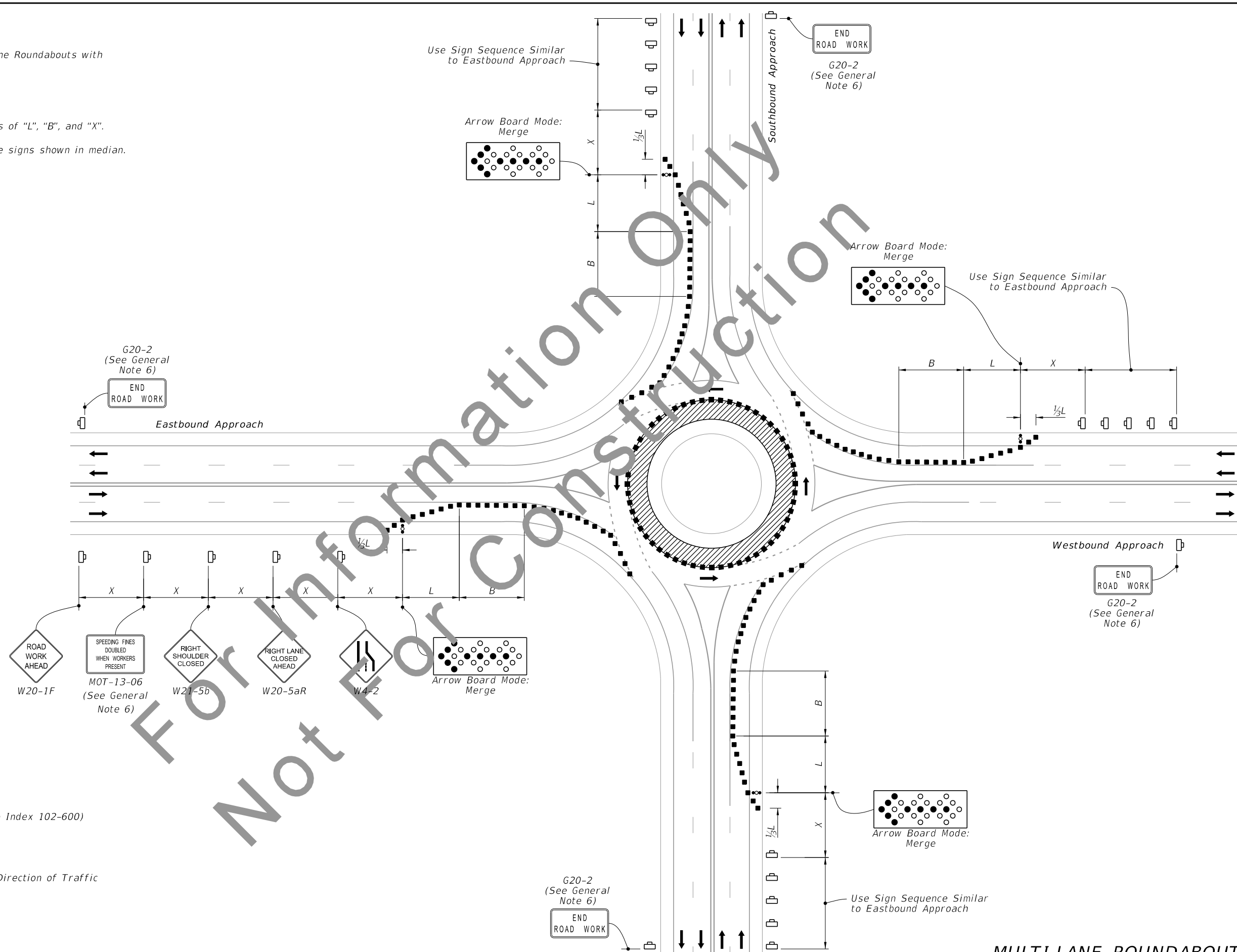
5/12/2021 9:36:33 AM

LAST REVISION 05/14/21	REVISION	DESCRIPTION:	DEVELOPMENTAL STANDARD PLANS	WORK WITHIN THE ROUNDABOUT	INDEX D102-690	SHEET 1 of 2
---------------------------	----------	--------------	-------------------------------------	-----------------------------------	--------------------------	------------------------

SINGLE-LANE ROUNDABOUT

NOTES:

1. This Index applies to Two-Lane Roundabouts with a closure of the center lane.
2. L = Taper Length
B = Buffer Length
X = Work Zone Sign Spacing
See Index 102-600 for values of "L", "B", and "X".
3. On divided roadways duplicate signs shown in median.



SYMBOLS:

- Work Area
- Channelizing Device (See Index 102-600)
- Work Zone Sign
- Arrow Board
- Lane Identification and Direction of Traffic

5/13/2021 1:49:56 PM

LAST REVISION 05/14/21	REVISION	DESCRIPTION:
---------------------------	----------	--------------

DEVELOPMENTAL STANDARD PLANS

WORK WITHIN THE ROUNDABOUT

INDEX D102-690	SHEET 2 of 2
--------------------------	------------------------

MULTI-LANE ROUNDABOUT