

**SINGLE LANE CLOSURE**

**GENERAL NOTES:**

1. L = Taper Length  
B = Buffer Length  
X = Work Zone Sign Distance  
See Index 102-600 for "L", "B", "X", and channelizing device spacing values.
2. On undivided highways the median signs as shown are to be omitted.
3. On limited access facilities, omit "Shoulder Closed Ahead" signs (W21-5a) and associated work zone sign spacing distances.
4. If the paved shoulder is less than 4' in width, omit the taper and channelizing devices from the paved shoulder.
5. Extend SWZ PCMS upstream, as needed, to ensure the first PCMS viewable to traffic is at least 1/2 mile in advance of expected traffic backup. If SWZ PCMS coverage is extended, also extend SWZ Vehicle Detector coverage to within 1/2 mile of the SWZ PCMS coverage.
6. For Limited Access facilities, spacing of SWZ Vehicle Detectors and SWZ PCMS may be adjusted due to actual field conditions as directed or approved by the Engineer. For long work areas, place SWZ Vehicle Detectors with SWZ VSL/ESFS every one mile downstream from beginning of work area. Spacing of SWZ devices shown apply to urban, suburban, and rural areas except that spacing of SWZ VSL/ESFS through long work areas may be increased to two miles in suburban or rural areas. A minimum of two SWZ VSL/ESFS are required prior to the work area for limited access facilities with speed limits of 60 MPH or higher.

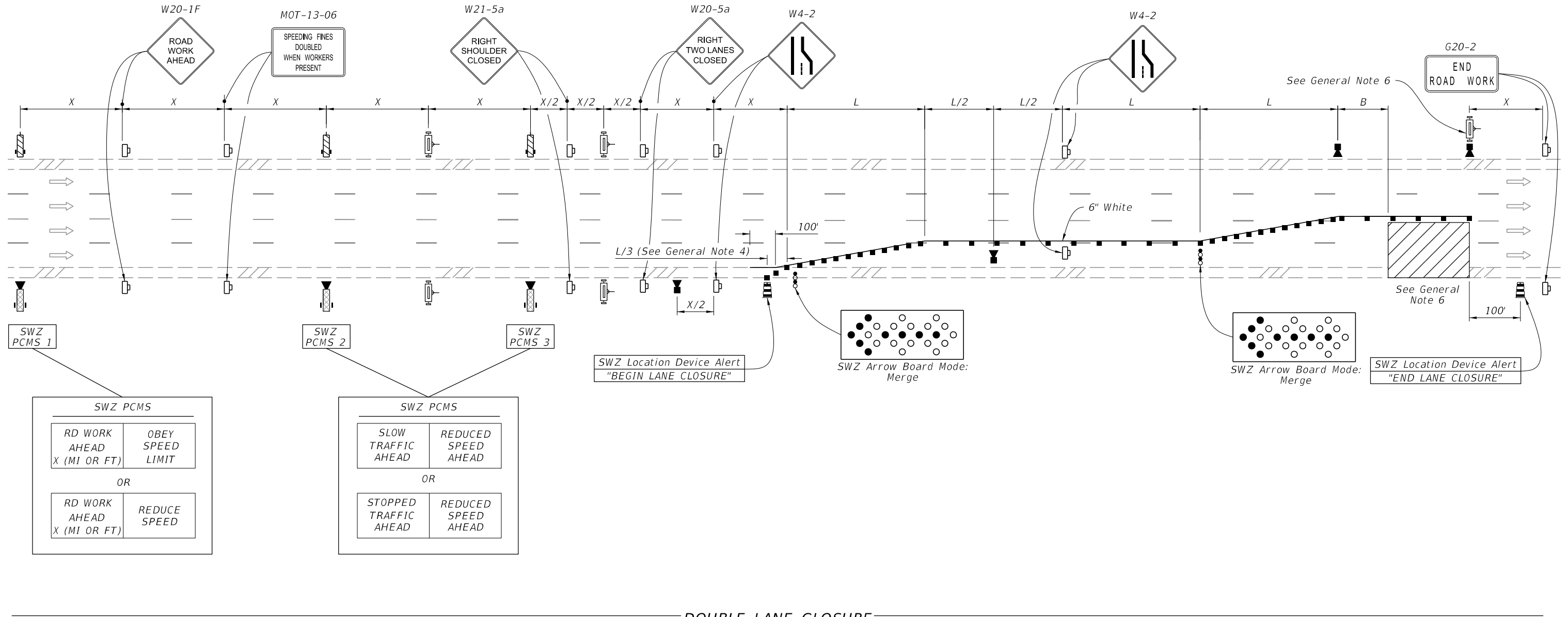
**SYMBOLS:**

- Work Area
- Channelizing Device (See Index 102-600)
- Work Zone Sign
- SWZ Arrow Board
- Lane Identification and Direction of Traffic
- (3) SWZ Portable Changeable Message Sign (PCMS) with SWZ Vehicle Detector
- (2) SWZ Portable Variable Speed Limit Sign with Electronic Speed Feedback Sign
- (1) SWZ Portable VSL/ESFS with SWZ Vehicle Detector
- (2) SWZ Vehicle Detector
- (2) SWZ Location Device

**TABLE OF CONTENTS:**

Sheet	Description
1	Single Lane Closure
2	Double Lane Closure
3	Advance SWZ Detail for Triple Lane Closure and Lane Closure with Lane Shift
4	Triple Lane Closure
5	Lane Closure With Lane Shift

1/25/2024 7:56:39 AM

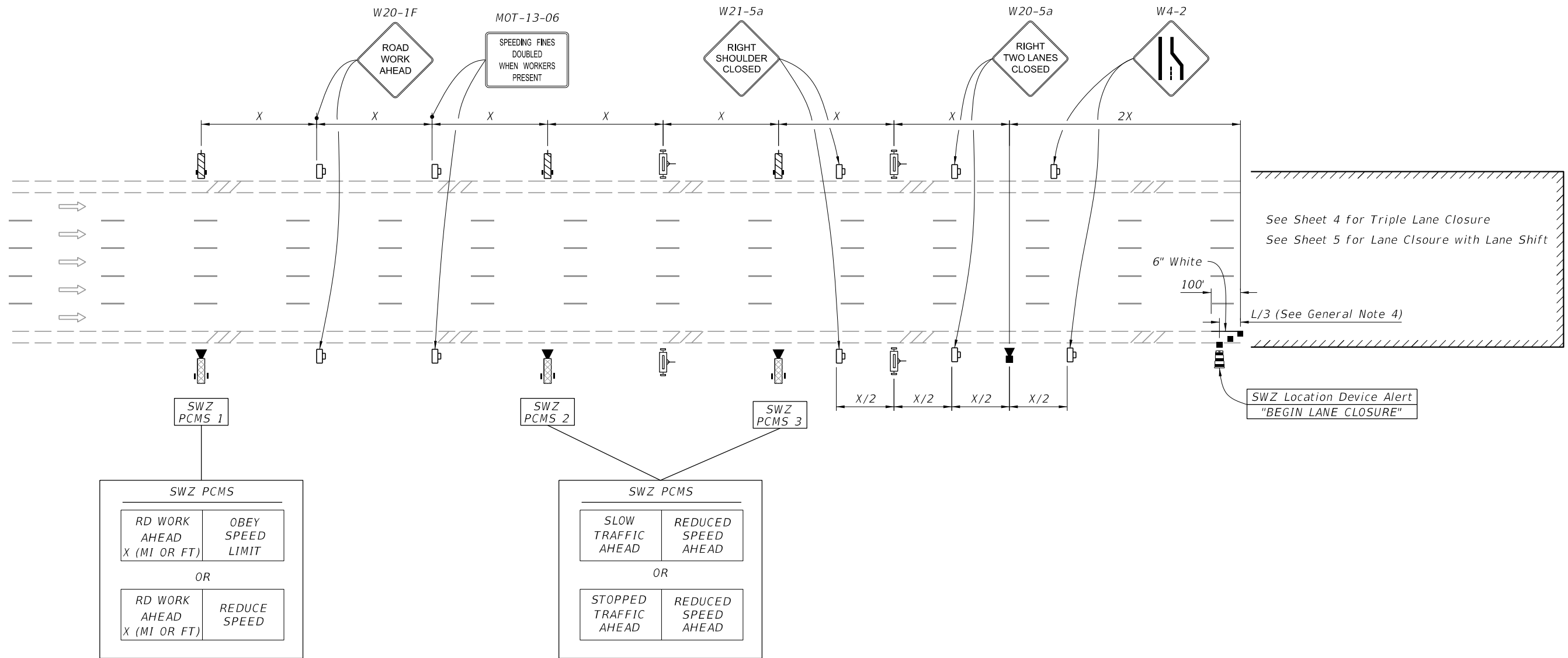


**DOUBLE LANE CLOSURE**

**SYMBOLS:**

- Work Area
- Channelizing Device (See Index 102-600)
- Work Zone Sign
- (2) SWZ Arrow Board
- Lane Identification and Direction of Traffic
- (3) SWZ Portable Changeable Message Sign (PCMS) With SWZ Vehicle Detectors
- (3) SWZ Portable Changeable Message Sign (PCMS) With SWZ Vehicle Detectors
- (1) SWZ Portable VSL/ESFS with SWZ Vehicle Detector
- (4) SWZ Portable Variable Speed Limit Sign with Electronic Speed Feedback Sign
- (3) SWZ Vehicle Detector
- (2) SWZ Location Device

1/25/2024 7:56:46 AM



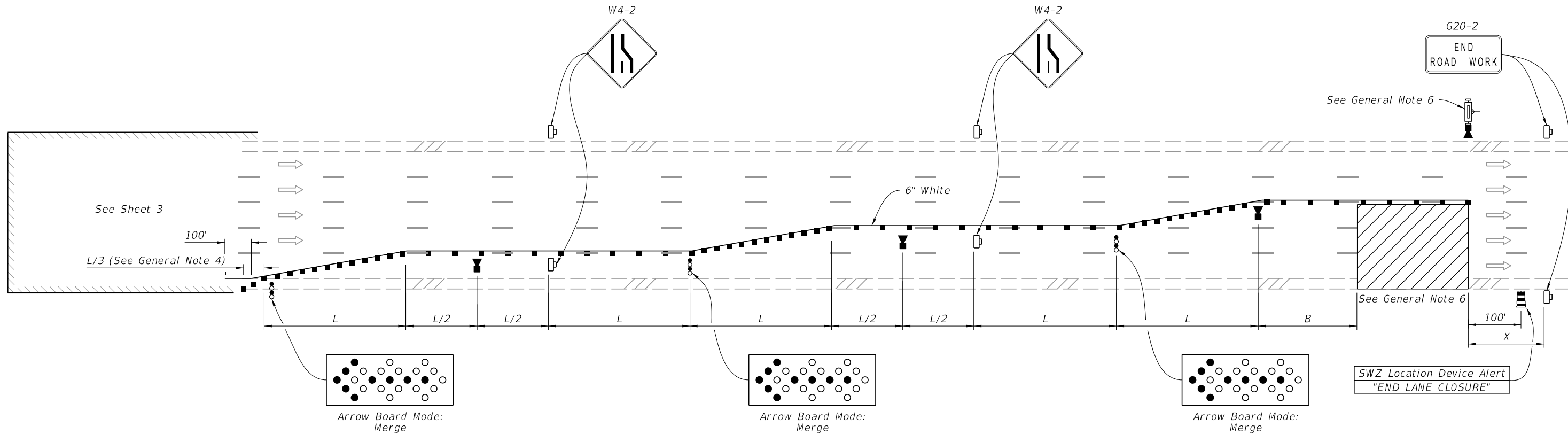
ADVANCE SWZ DETAIL FOR TRIPLE LANE CLOSURE AND LANE CLOSURE WITH SHIFT

SYMBOLS:

- Work Area
- Channelizing Device (See Index 102-600)
- Work Zone Sign
- Lane Identification and Direction of Traffic
- (3) SWZ Portable Changeable Message Sign (PCMS) With SWZ Vehicle Detectors
- (4) SWZ Portable Variable Speed Limit Sign with Electronic Speed Feedback Sign
- (1) SWZ Vehicle Detector
- (1) SWZ Location Device

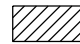

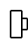

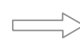



1/25/2024 7:56:52 AM

LAST REVISION 01/26/24	REVISION	DESCRIPTION:	 DEVELOPMENTAL STANDARD PLANS	DYNAMIC SPEED HARMONIZATION - LANE CLOSURE	INDEX D102-613c	SHEET 3 of 5
---------------------------	----------	--------------	----------------------------------	--	--------------------	-----------------




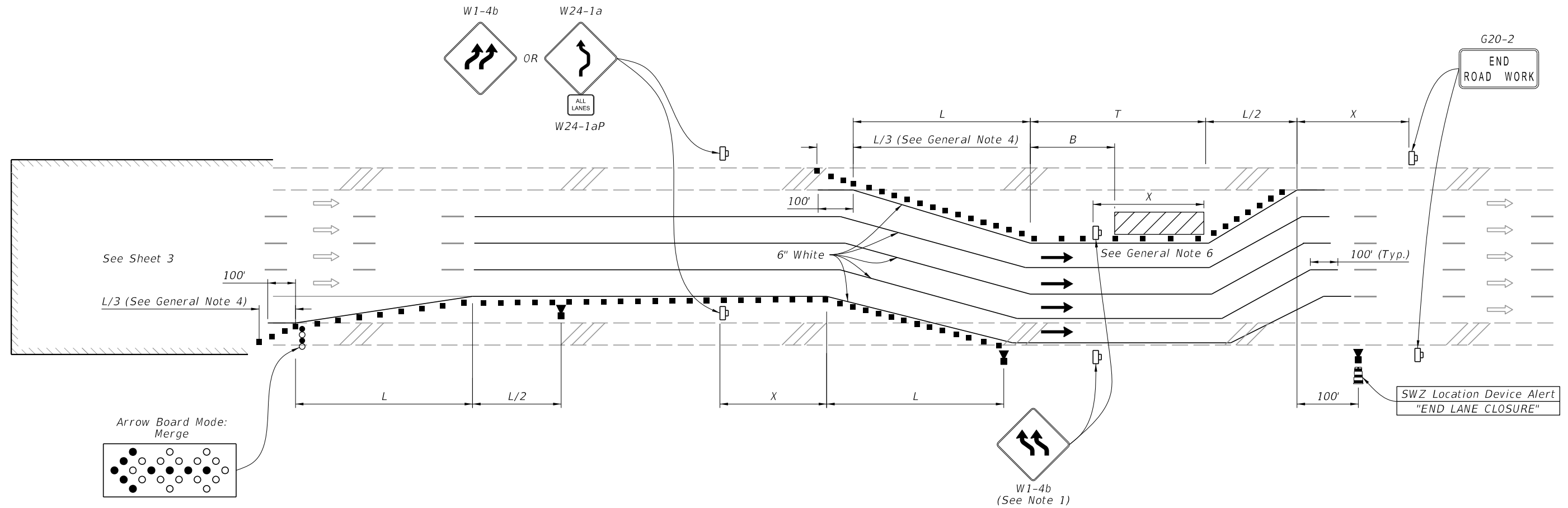
TRIPLE LANE CLOSURE

**SYMBOLS:**

-  Work Area
-  Channelizing Device (See Index 102-600)
-  Work Zone Sign
-  (3) SWZ Arrow Board
-  Lane Identification and Direction of Traffic
-  (1) SWZ Portable VSL/ESFS with SWZ Vehicle Detector
-  (3) SWZ Vehicle Detector
-  (1) SWZ Location Device

1/25/2024 7:56:58 AM

LAST REVISION 01/26/24	REVISION	DESCRIPTION:	 <b>DEVELOPMENTAL STANDARD PLANS</b>	<b>DYNAMIC SPEED HARMONIZATION - LANE CLOSURE</b>	INDEX <b>D102-613c</b>	SHEET <b>4 of 5</b>
---------------------------	----------	--------------	--	---	---------------------------	------------------------










LANE CLOSURE WITH LANE SHIFT


**NOTE:**

If the tangent distance "T" is less than 600', then use "Double Reverse Curve" signs (W24-1a) instead of the first pair of "Reverse Curve" signs (W1-4b) and omit the second pair of "Reverse Curve" signs.

**SYMBOLS:**

-  Work Area
-  Channelizing Device (See Index 102-600)
-  Work Zone Sign
-  SWZ Arrow Board
-  Lane Identification and Direction of Traffic
-  (3) SWZ Vehicle Device
-  (1) SWZ Location Device

1/25/2024 7:57:05 AM

LAST REVISION 01/26/24	REVISION	DESCRIPTION:		<b>DEVELOPMENTAL STANDARD PLANS</b>	<b>DYNAMIC SPEED HARMONIZATION - LANE CLOSURE</b>	INDEX D102-613c	SHEET 5 of 5
---------------------------	----------	--------------	--	---	---	--------------------	-----------------