


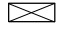




TEMPORARY DIVERSION CONNECTION FOR UNDIVIDED ROADWAYS


GENERAL NOTES:

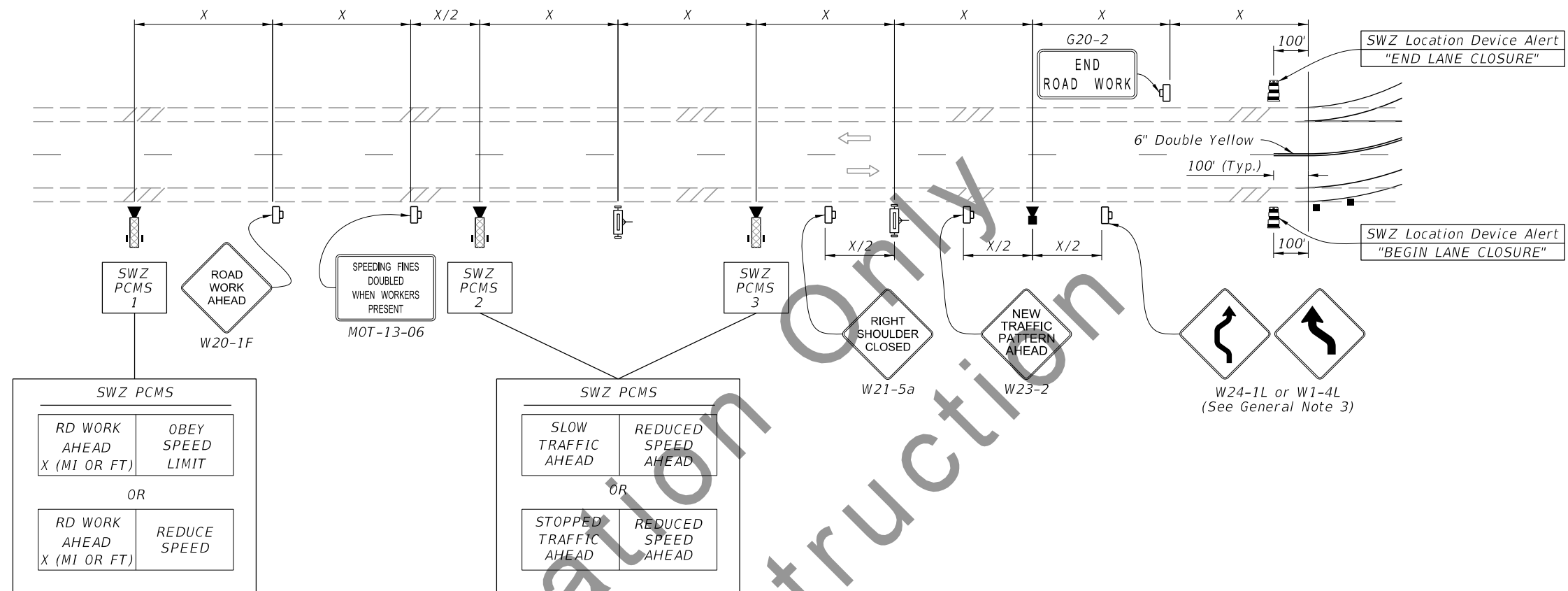
1. This Index applies to Two-Lane, Two-Way Roadways with temporary diversions.
2. B = Buffer Length
 X = Work Zone Sign Distance
 R = Radius of Curve
 See Index 102-600 for " B ", " X ", and channelizing device spacing values.
 See Plans for " R " values.
3. If the tangent distance " T " is less than 600', for each direction use a "Double Reverse Curve" sign (W24-1) instead of the first "Reverse Curve" sign (W1-4) and omit the second "Reverse Curve" sign.
4. See FDOT Speed Zoning Manual for criteria on smart work zones, setting and managing variable speed limits (VSL), and setting work zone speed limits.

SYMBOLS:

-  Work Area
-  Channelizing Device (See Index 102-600)
-  Work Zone Sign
-  Type III Barricade
-  Lane Identification and Direction of Traffic
-  (1) SWZ Vehicle Detector

1/25/2024 7:16:47 AM

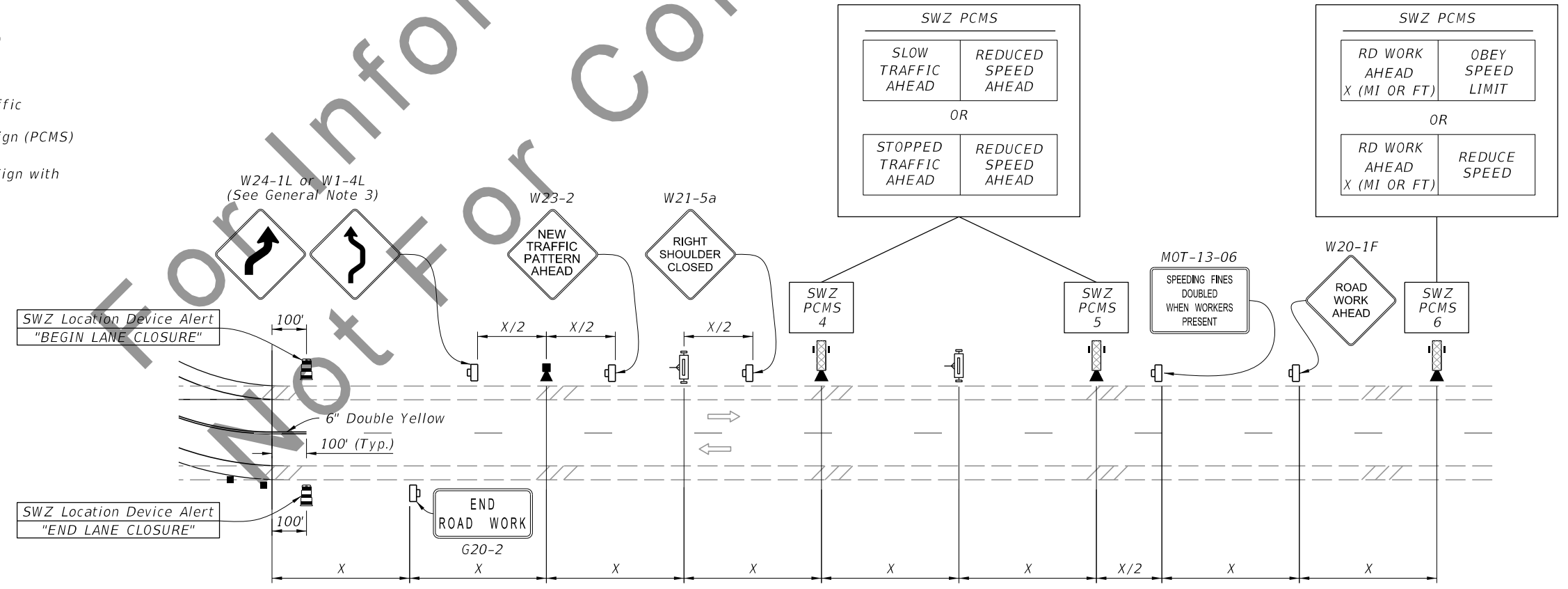
LAST REVISION 01/26/24	REVISION	DESCRIPTION:		DEVELOPMENTAL STANDARD PLANS	DYNAMIC SPEED HARMONIZATION - TWO-LANE, TWO-WAY TEMPORARY DIVERSION CONNECTION	INDEX D102-608b	SHEET 1 of 2
---------------------------	----------	--------------	---	---	---	---------------------------	------------------------



DETAIL "A"

SYMBOLS:

- Work Area
- Channelizing Device (See Index 102-600)
- Work Zone Sign
- Lane Identification and Direction of Traffic
- (6) SWZ Portable Changeable Message Sign (PCMS)
- (4) Portable Variable Speed Limit (VSL) Sign with Portable Speed Feedback Sign
- (2) SWZ Vehicle Detector
- (4) SWZ Location Device



DETAIL "B"

1/25/2024 7:16:53 AM

LAST REVISION 01/26/24	REVISION	DESCRIPTION:		DEVELOPMENTAL STANDARD PLANS	DYNAMIC SPEED HARMONIZATION - TWO-LANE, TWO-WAY TEMPORARY DIVERSION CONNECTION	INDEX D102-608b	SHEET 2 of 2
---------------------------	----------	--------------	--	---------------------------------	--	--------------------	-----------------