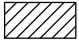


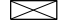




TEMPORARY DIVERSION CONNECTION FOR UNDIVIDED ROADWAYS


GENERAL NOTES:

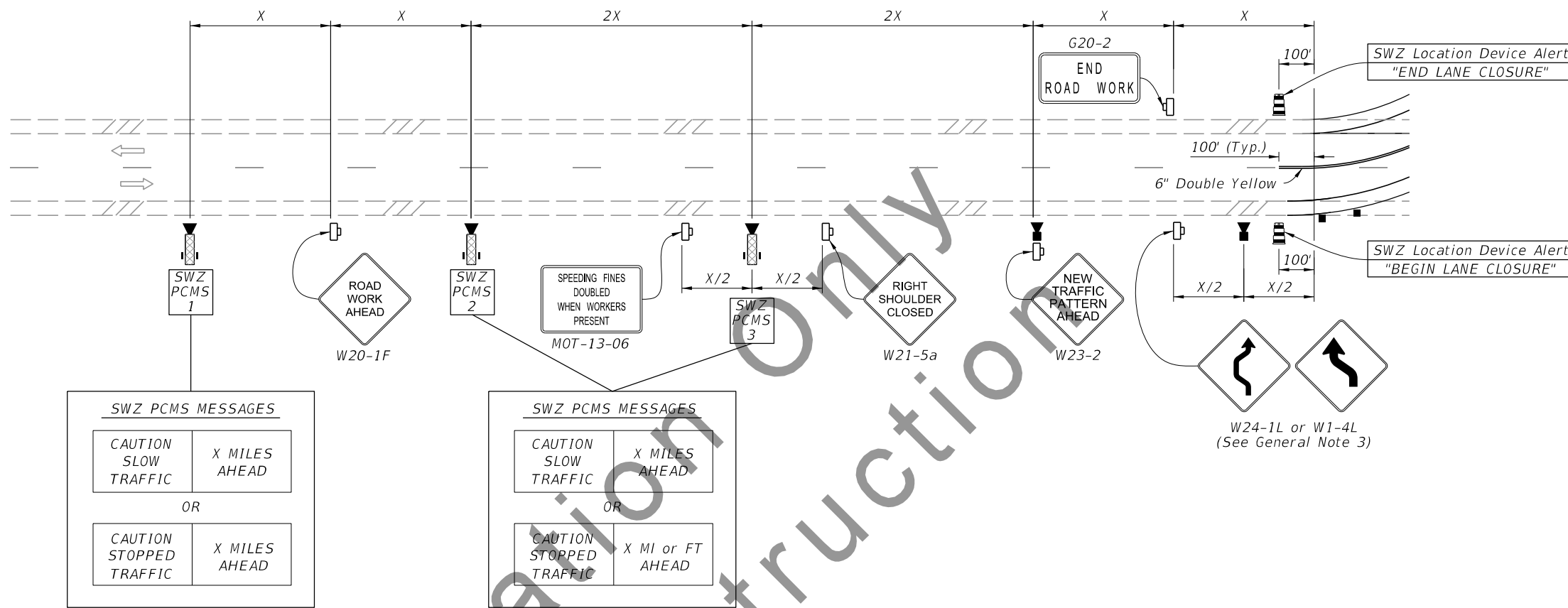
1. This Index applies to Two-Lane, Two-Way Roadways with temporary diversions.
2. B = Buffer Length
 X = Work Zone Sign Distance
 R = Radius of Curve
 See Index 102-600 for " B ", " X ", and channelizing device spacing values.
 See Plans for " R " values.
3. If the tangent distance " T " is less than 600', for each direction use a "Double Reverse Curve" sign (W24-1) instead of the first "Reverse Curve" sign (W1-4) and omit the second "Reverse Curve" sign.

SYMBOLS:

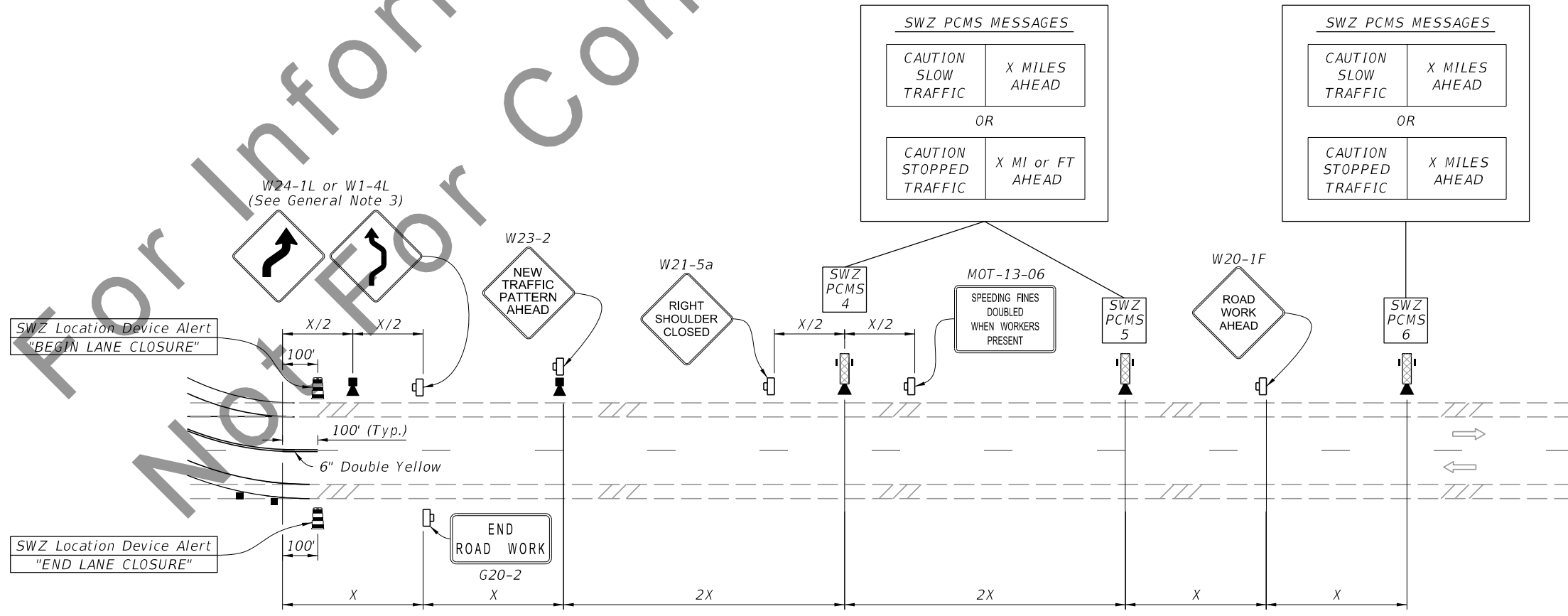
-  Work Area
-  Channelizing Device (See Index 102-600)
-  Work Zone Sign
-  Type III Barricade
-  Lane Identification and Direction of Traffic
-  (1) SWZ Vehicle Detector

1/25/2024 7:10:45 AM

LAST REVISION 01/26/24	REVISION	DESCRIPTION:		DEVELOPMENTAL STANDARD PLANS	DYNAMIC QUEUE DETECTION AND WARNING - TWO-LANE, TWO-WAY TEMPORARY DIVERSION CONNECTION	INDEX D102-608a	SHEET 1 of 2
---------------------------	----------	--------------	---	---------------------------------	--	--------------------	-----------------



DETAIL "A"



DETAIL "B"

- SYMBOLS:**
- Channelizing Device (See Index 102-600)
 - Work Zone Sign
 - Lane Identification and Direction of Traffic
 - ▣ (6) SWZ Portable Changeable Message Sign (PCMS) with Portable SWZ Vehicle Detector
 - ▼ (4) SWZ Vehicle Detector
 - ▤ (4) SWZ Location Device

1/25/2024 7:10:52 AM