

GENERAL NOTES:

1. Meet the requirements of Specification 700.
2. Work with Index 700-010.
3. Shop Drawings: Not required.
4. Construction:

A. Locate Sign Support a minimum of 5 feet from an open joint or transition (sign stationing may be adjusted to accommodate this requirement.

B. Base plate must be flush with back of Traffic Railing

C. Anchors in Traffic Railings:

a. Install Adhesive Anchors in accordance with Specification 416 except perform field test on one anchor per sign support location.

b. Use templates and tie anchors as necessary to maintain correct placement of C-I-P Embedded Anchors

c. Do not drill into existing conduit

D. Temporary Signs on Permanent Traffic Railings: Same as Permanent except Field testing of anchors is not required

5. Removal of Temporary Signs on Permanent Traffic Railings:

A. Cut anchor rods flush with the top of the traffic railing

B. Coat anchors with Type F-1 epoxy to prevent corrosion

a. Extend coating 2 inches beyond edge of cut anchor rods

b. Epoxy coating 1/16" thick minimum

6. Bridge deck shown. Approach slabs, junction slabs, and miscellaneous structures are similar.

7. Traffic railings are shown. Concrete barriers and parapets are similar.

8. Materials:

A. Steel Plate: ASTM A36 or ASTM A709 Grade 36

B. Steel Pipe (Support Post): ASTM A501 Schedule 40

C. Aluminum Pipe: ASTM B429 Alloy 6061-T6

D. Galvanized U-Bolts, Nuts and Plate Washer

a. U-Bolts: ASTM A449

b. Hex Nuts: ASTM A 563 Lock Nuts

c. Plate Washer: ASTM A 36 or ASTM A709 Grade 36 or 50

E. Galvanized Anchor bolts, Nuts and Washers:

a. Anchor Rod: ASTM F1554 Grade 55 fully threaded (for Adhesive Anchors)

b. Anchor Bolts: ASTM F1554 Grade 55 Grade A Hex

c. Nuts: ASTM A563 Heavy Hex Locking

d. Washers: ASTM F436


SIGN LIMITATIONS TABLE	
MAX. SIGN AREA (SF)	MAX. SIGN CENTROID HEIGHT (DIM. A + DIM. C)
25	9'-7"

Dimension A = Distance from centerline of the Support Post to the bottom of the sign or sign cluster.

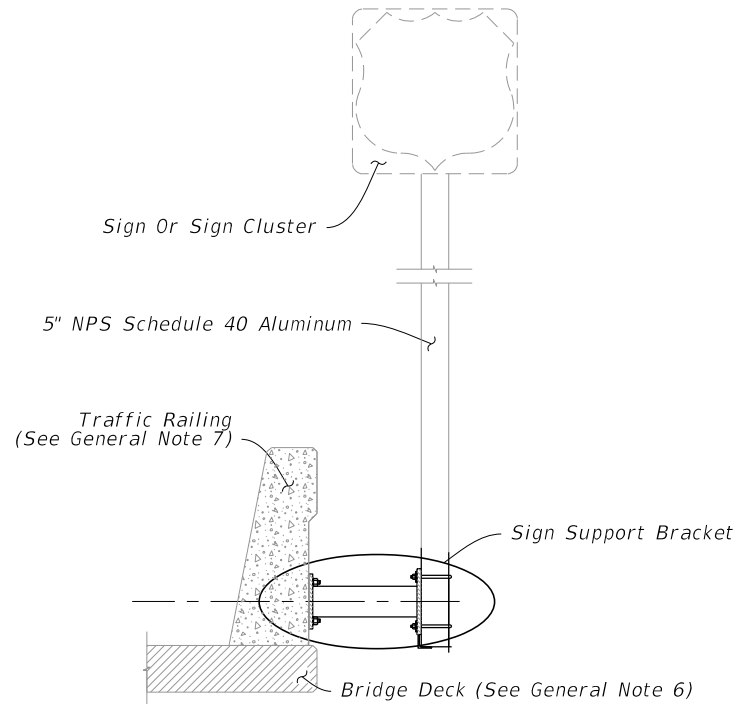
Dimension C = Vertical distance from the bottom of the sign or sign cluster to the Centroid of the sign or sign cluster.

The diagram illustrates a side-mounted sign support assembly on a bridge deck. A vertical support post, labeled 'Support Post (5" NPS Schedule 40 Steel Pipe)', is anchored into the 'Bridge Deck (See General Note 6)'. A 'Traffic Railing (See General Note 7)' is positioned behind the post. A 'Base Plate End Plate' is attached to the post. A sign or sign cluster is mounted on the post, with its 'Sign Centroid' indicated. The vertical distance from the bottom of the sign to the centroid is labeled 'Dimension C'. The vertical distance from the centerline of the support post to the bottom of the sign is labeled 'Dimension A'. A horizontal distance of '0" (Min.)' is shown between the post and the sign. The sign is labeled 'Sign Or Sign Cluster'. The diagram is titled 'SIGN SUPPORT ASSEMBLY'.

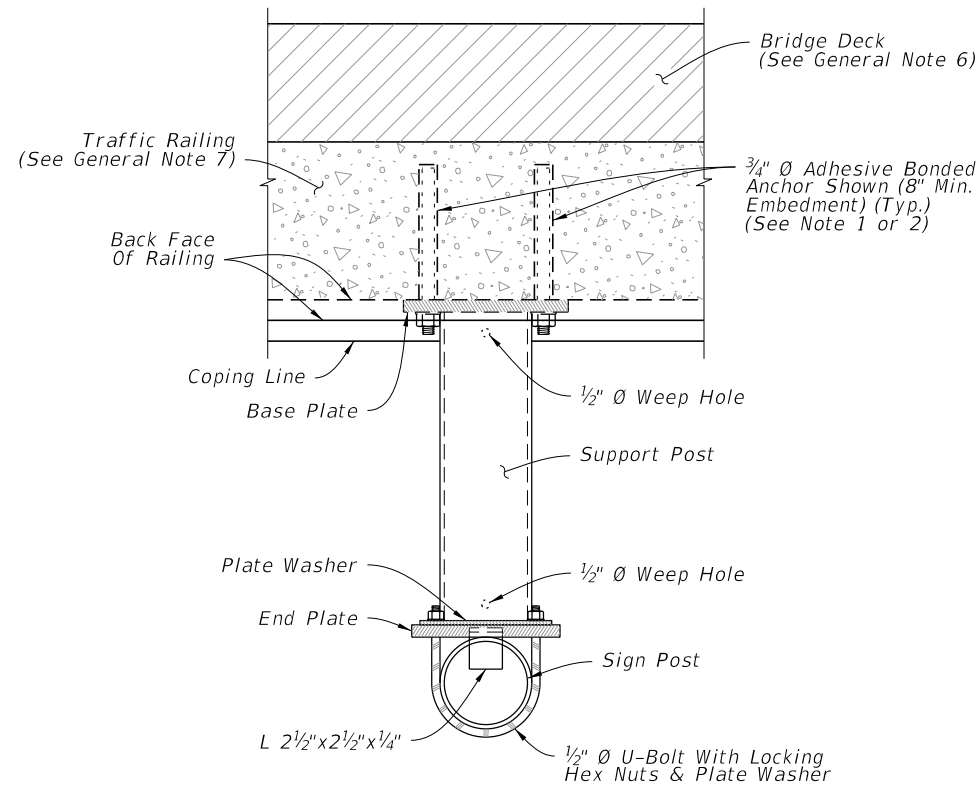
9/29/2025 7:17:04 AM

LAST REVISION 11/01/22	REVISION	DESCRIPTION:	 FY 2026-27 STANDARD PLANS	SINGLE POST SIGN SUPPORT BARRIER SIDE-MOUNTED	INDEX 700-012	SHEET 1 of 3
------------------------------	----------	--------------	--	---	------------------	-----------------

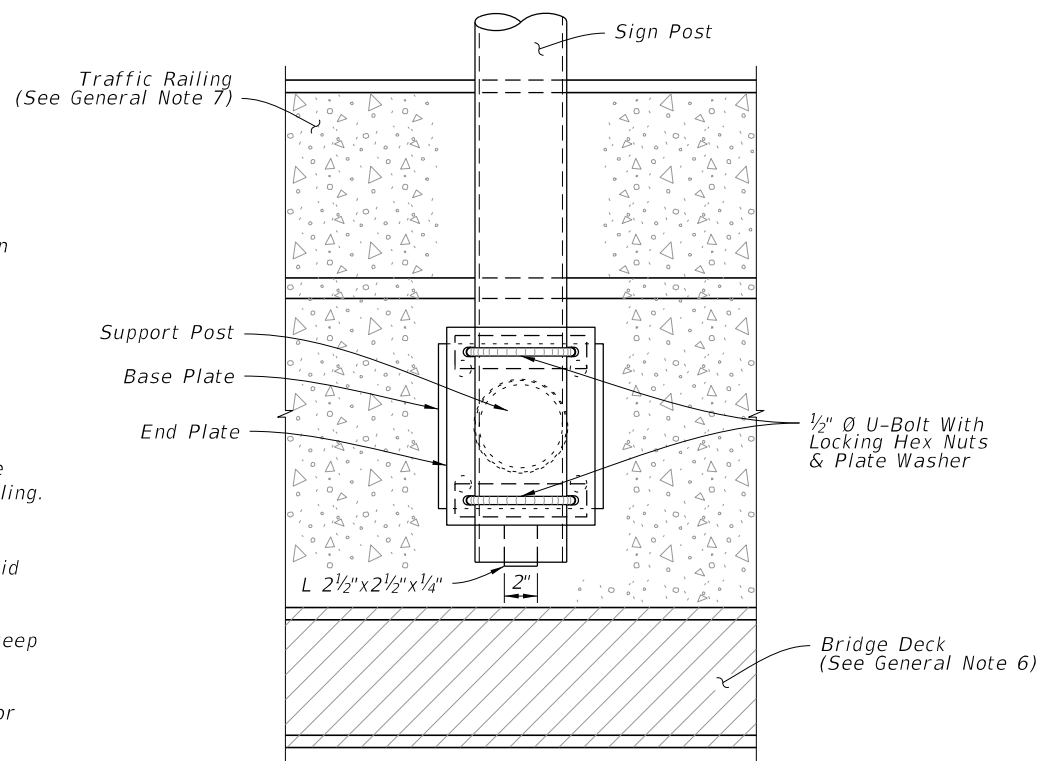
9/29/2025 7:17:11 AM



SIGN SUPPORT ASSEMBLY



PLAN

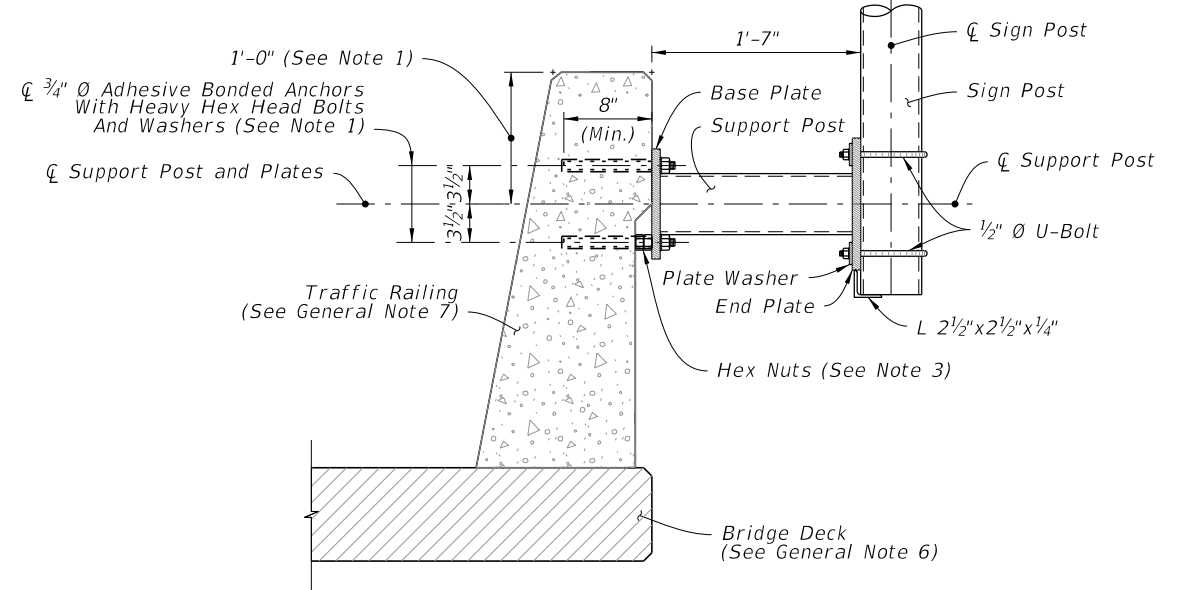


ELEVATION

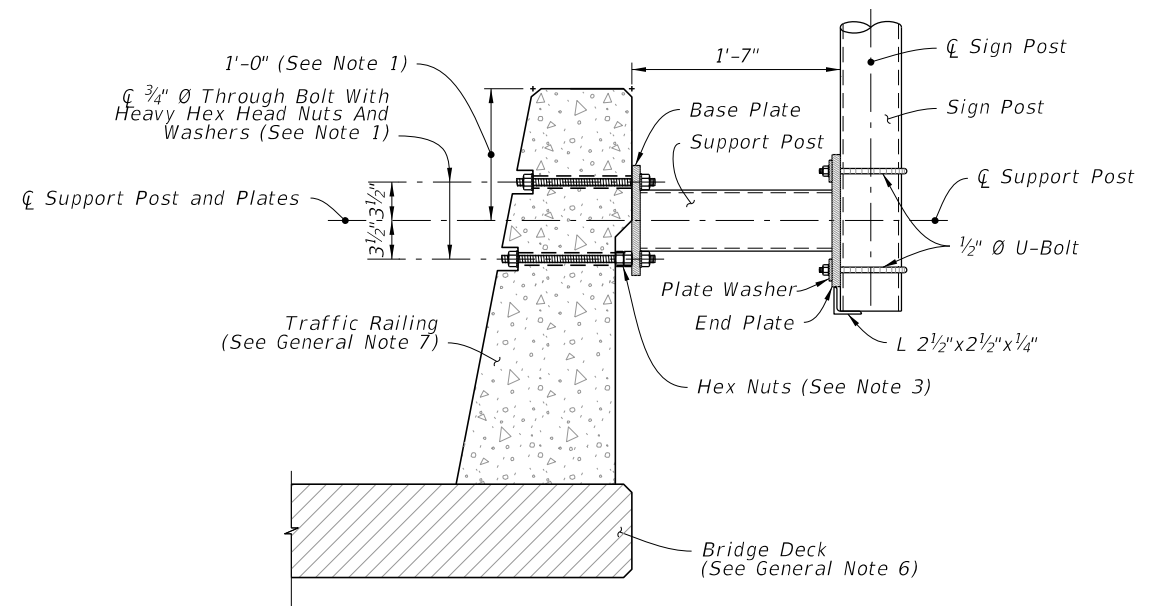
SIGN SUPPORT BRACKET

NOTES:

- Existing Traffic Railings:
 - Locate existing conduit prior to drilling and adjust placement of base plate as necessary to avoid damaging existing conduit. Base plate must be flush with back of traffic railing. Maintain a minimum cover 2" from face of traffic railing to tip of Adhesive Anchor.
 - For concrete parapets less than 10" thick, through bolt 3/4" Ø Heavy Hex Head Bolts with Nuts and Washers in lieu of Adhesive Bonded Anchors. Bolt heads shall not protrude more than 1 1/2" beyond traffic face of railing.
 - For through bolting, countersink the nut and washer so that the bolt and nut does not extend beyond the face of the traffic railing. Do not exceed a countersink depth and diameter of 2 1/2".
 - Shift assembly up or down a maximum of 1" as required to avoid horizontal bars in the barrier.
- For new Traffic Railings, couplers are shown for slipforming, keep Anchor Bolt coupler threads free of concrete.
- Install 2 heavy hex nuts. Add a washer if required to account for concrete dimension tolerance.

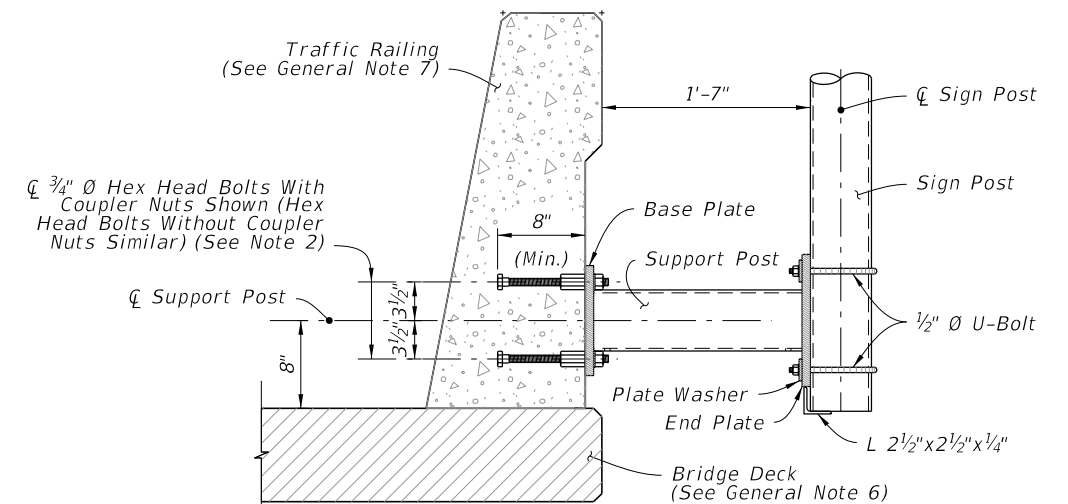


ADHESIVE BOND



THROUGH BOLTING

TYPICAL SECTION - EXISTING RAILING



TYPICAL SECTION - NEW CONSTRUCTION



FY 2026-27
STANDARD PLANS

SINGLE POST SIGN SUPPORT BARRIER SIDE-MOUNTED

INDEX
700-012

SHEET
2 of 3

LAST
REVISION
11/01/25

REVISION
DESCRIPTION:

