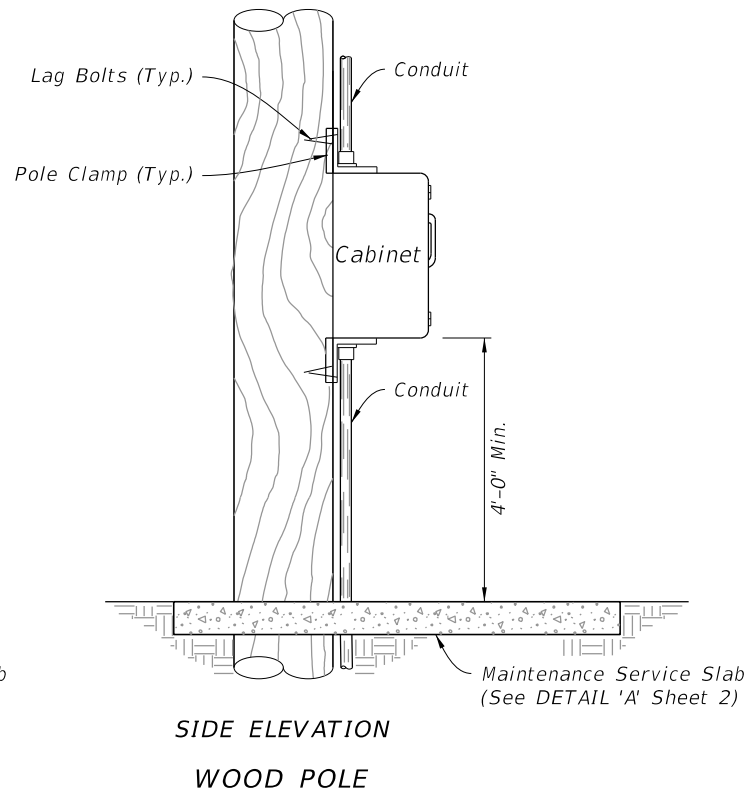
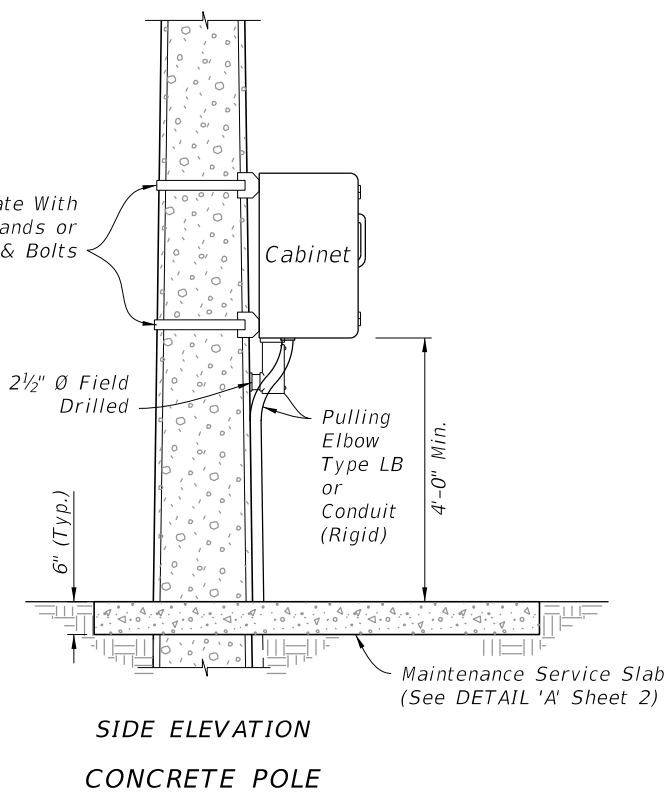
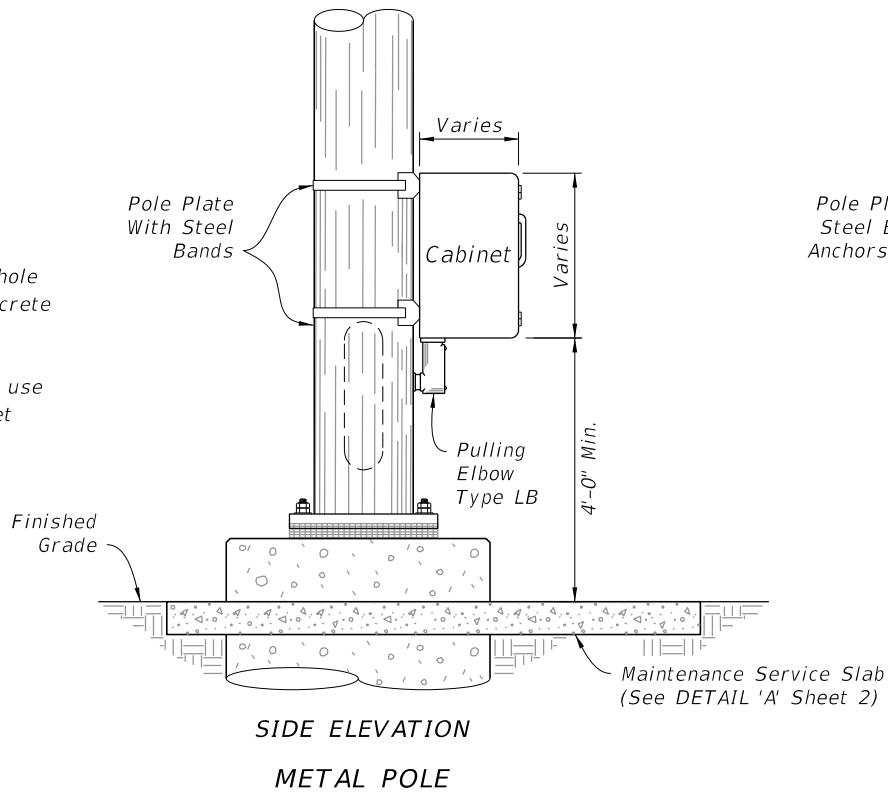
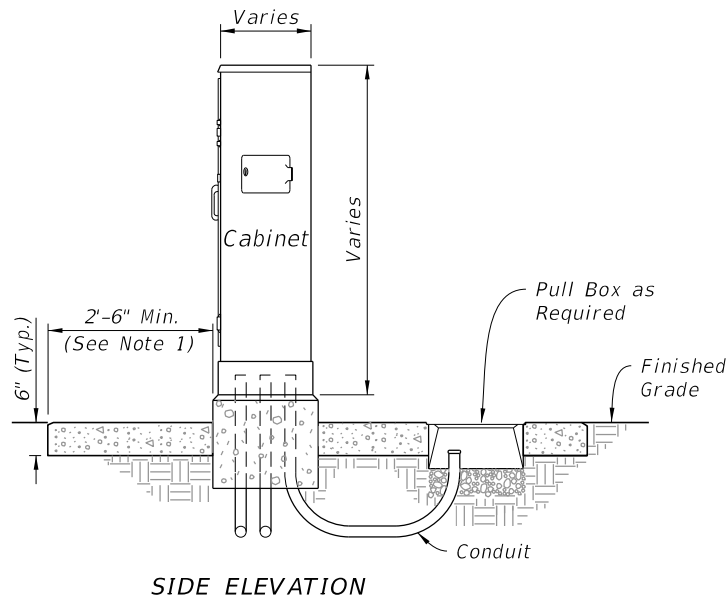
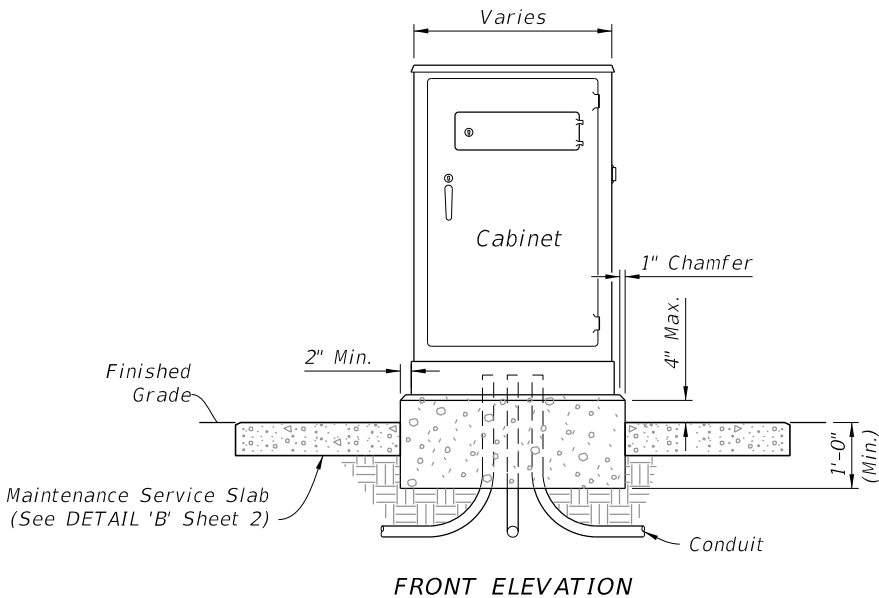


- NOTES:**
- 1. If cabinet mounting requires relocation of hole in concrete pole, fill existing hole with concrete or cover with a noncorrosive cover plate.
  - 2. Liquidtight flexible conduit is approved for use from the electrical disconnect to the cabinet when both are installed on the same pole.



**POLE MOUNTED CONTROLLER CABINET**

- NOTES:**
- 1. Maintenance Service Slab: Use Class NS concrete and slope 1/4" to 1" for drainage. Not required in sidewalk, pavement areas, or where R/W is restricted.
  - 2. The number, size and orientation of conduit sweep will vary according to site condition or locations. Provide two spare 2" PVC conduits in all bases. Place the exits of the spare conduits in the direction of the center rear of the cabinet base and into a pull box. If obstructions prevent the spare conduit from exiting to the rear, or the rear of the cabinet is located on the R/W line, locate as directed by the Engineer. Cap all spare conduit sweeps with a weatherproof fitting.



**NEW CONTROLLER CABINET**

**GROUND MOUNTED CONTROLLER CABINET**



**FY 2026-27  
STANDARD PLANS**

**CABINET INSTALLATION DETAILS**

**INDEX  
676-010**

**SHEET  
1 of 4**

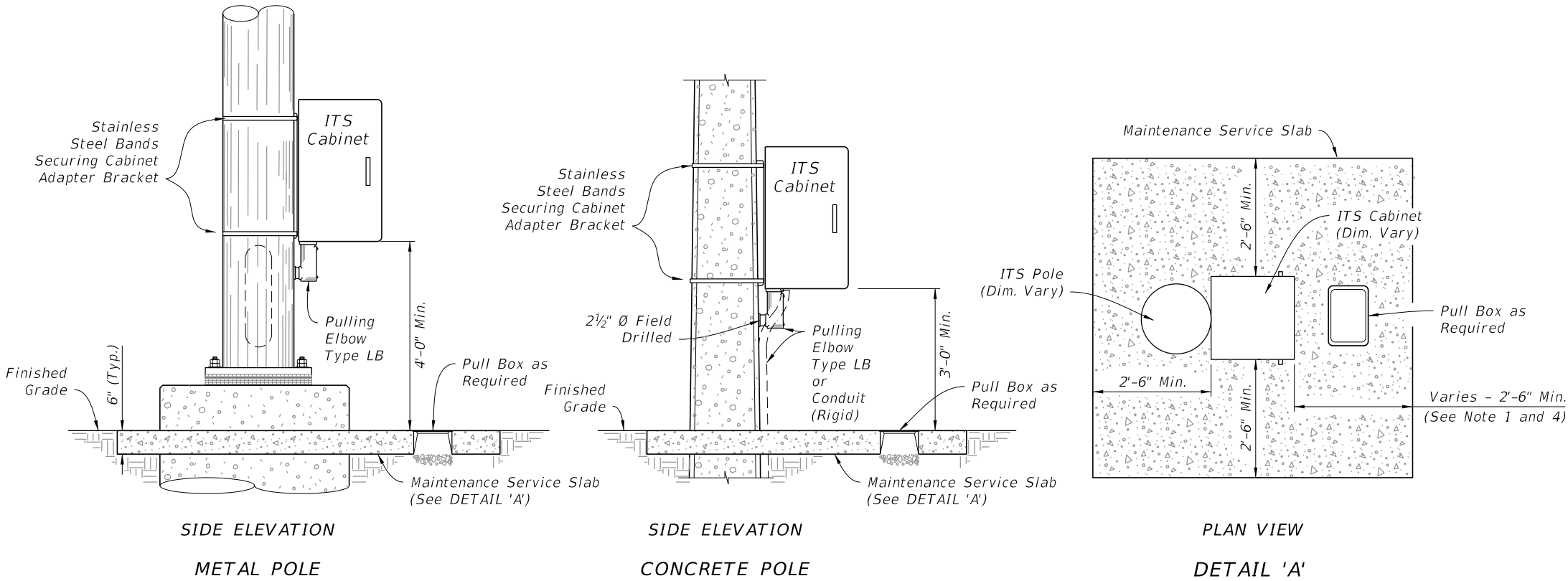
**LAST  
REVISION  
11/01/23**

**DESCRIPTION:**

9/26/2025 3:21:56 PM

NOTES:

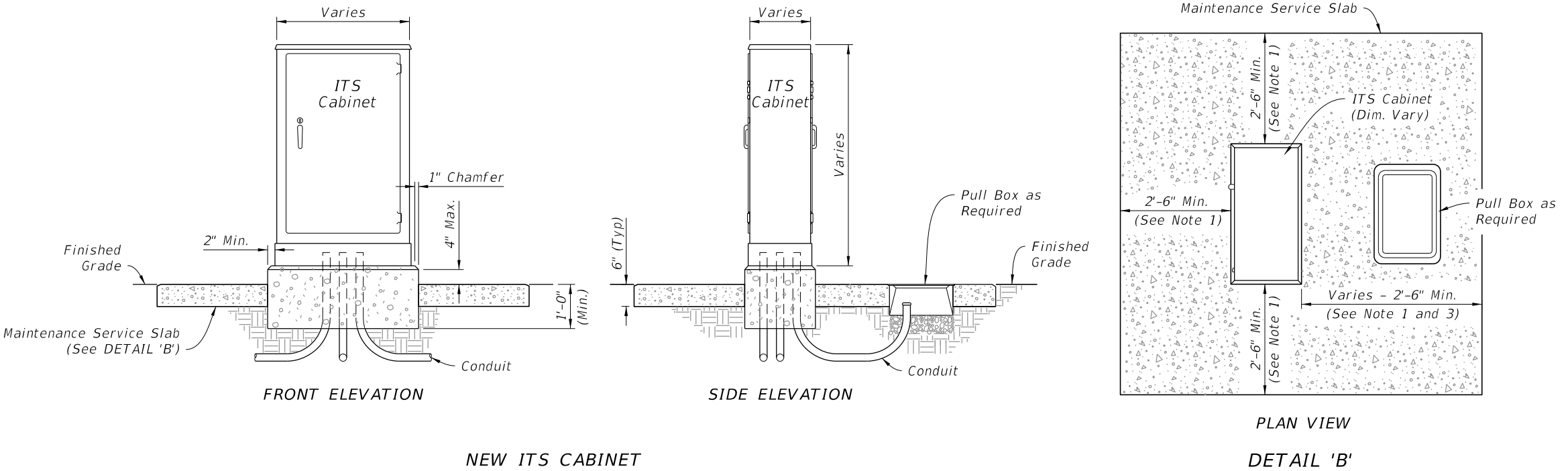
- 1. Maintenance Service Slab: Use Class NS concrete and slope ¼" to 1" for drainage. Not required in sidewalk, pavement areas, or where R/W is restricted.
- 2. If cabinet mounting requires relocation of hole in concrete pole, fill existing hole with concrete or cover with a noncorrosive cover plate.
- 3. Liquidtight flexible conduit is approved for use from the electrical disconnect to the cabinet when both are installed on the same pole.
- 4. Where a pull box is to be placed within the maintenance service slab, the slab width must be extended to provide for the required pull box concrete apron as detailed in Index 635-001.
- 5. Coordinate placement of maintenance service slab with proposed final grade. Grade and compact side slopes around the maintenance service slab to provide a stable and level working area and tie into the proposed embankment.



POLE MOUNTED INTELLIGENT TRANSPORTATION SYSTEMS (ITS) CABINET

NOTES:

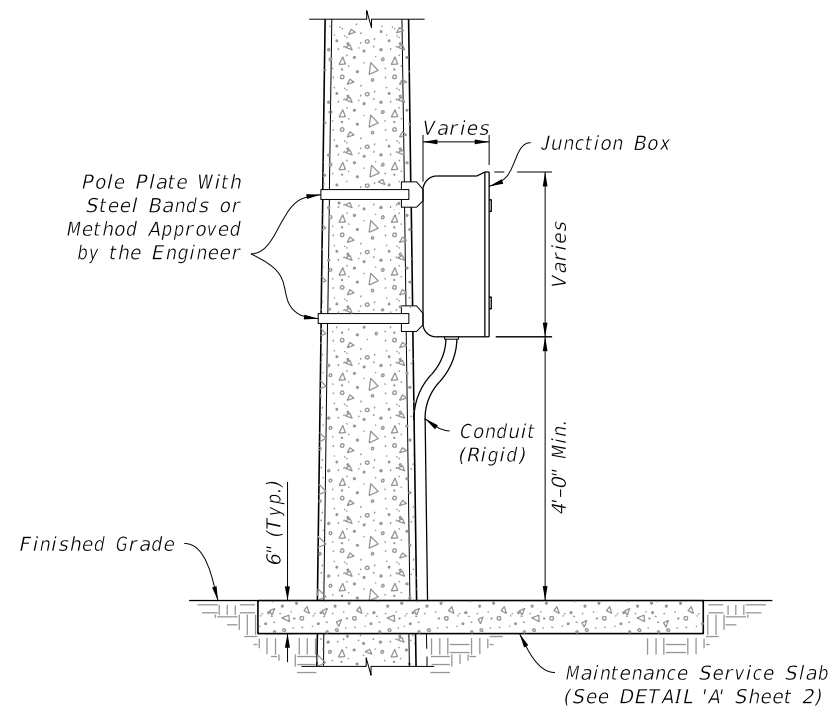
- 1. Maintenance Service Slab: Use Class NS concrete and slope ¼" to 1" for drainage. Not required in sidewalk, pavement areas, or where R/W is restricted.
- 2. The number, size and orientation of conduit sweep will vary according to site condition or locations. Provide two spare 2" PVC conduits in all bases. Place the exits of the spare conduits in the direction of the center rear of the cabinet base and into a pull box. If obstructions prevent the spare conduit from exiting to the rear, or the rear of the cabinet is located on the R/W line, locate as directed by the Engineer. Cap all spare conduit sweeps with a weatherproof fitting.
- 3. When a pull box is to be placed within the maintenance service slab, the slab width must be extended to provide for the required pull box apron as detailed in Index 635-001.
- 4. Coordinate placement of maintenance service slab with proposed final grade. Grade and compact side slopes around the maintenance service slab to provide a stable and level working area and tie into the proposed embankment.



NEW ITS CABINET

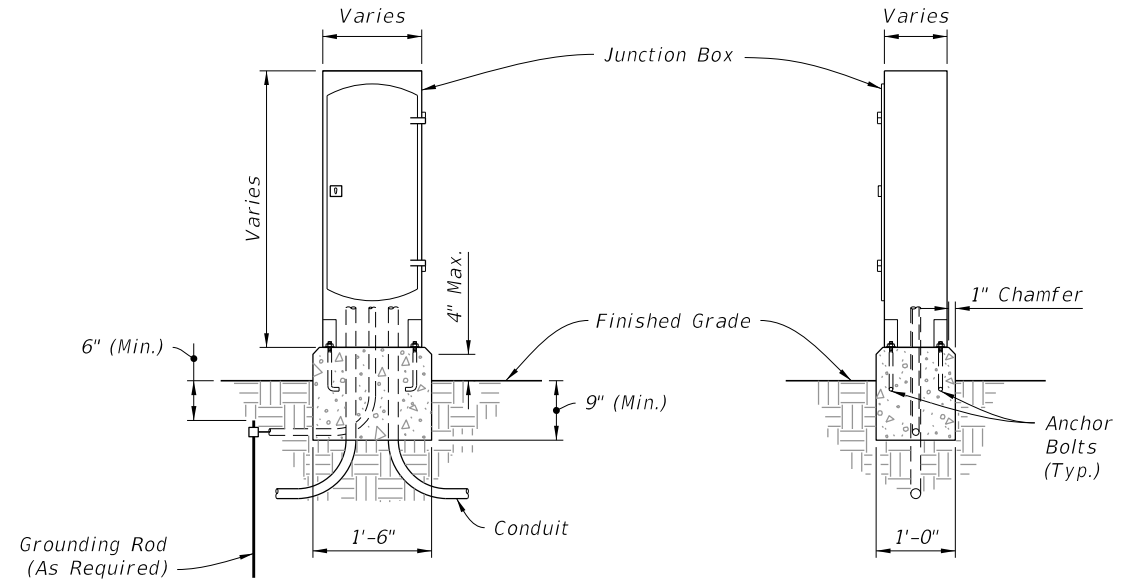
GROUND MOUNTED INTELLIGENT TRANSPORTATION SYSTEMS (ITS) CABINET

LAST REVISION 11/01/23	DESCRIPTION:	 <b>FY 2026-27 STANDARD PLANS</b>	<b>CABINET INSTALLATION DETAILS</b>	INDEX <b>676-010</b>	SHEET <b>2 of 4</b>
------------------------------	--------------	--	-------------------------------------	-------------------------	------------------------



SIDE ELEVATION

POLE MOUNTED

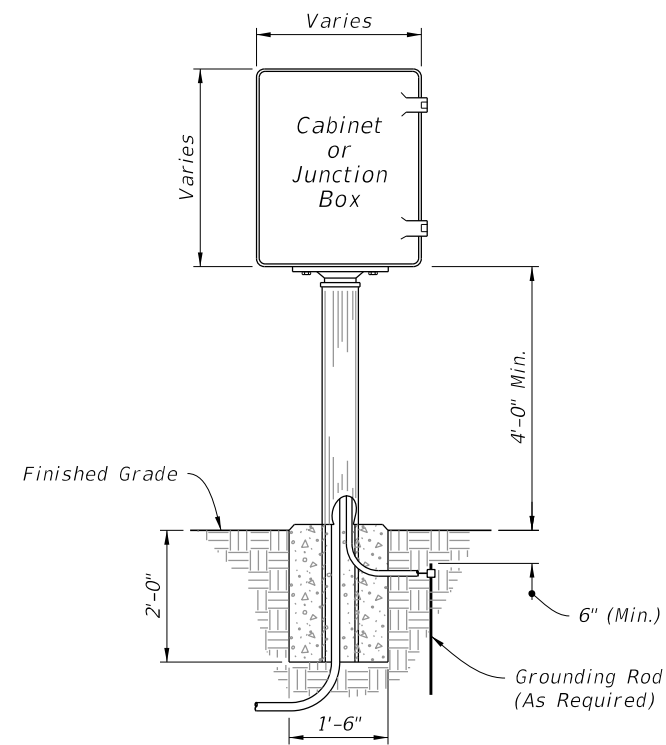


FRONT ELEVATION

SIDE ELEVATION

GROUND MOUNTED


### INTERCONNECT JUNCTION BOX

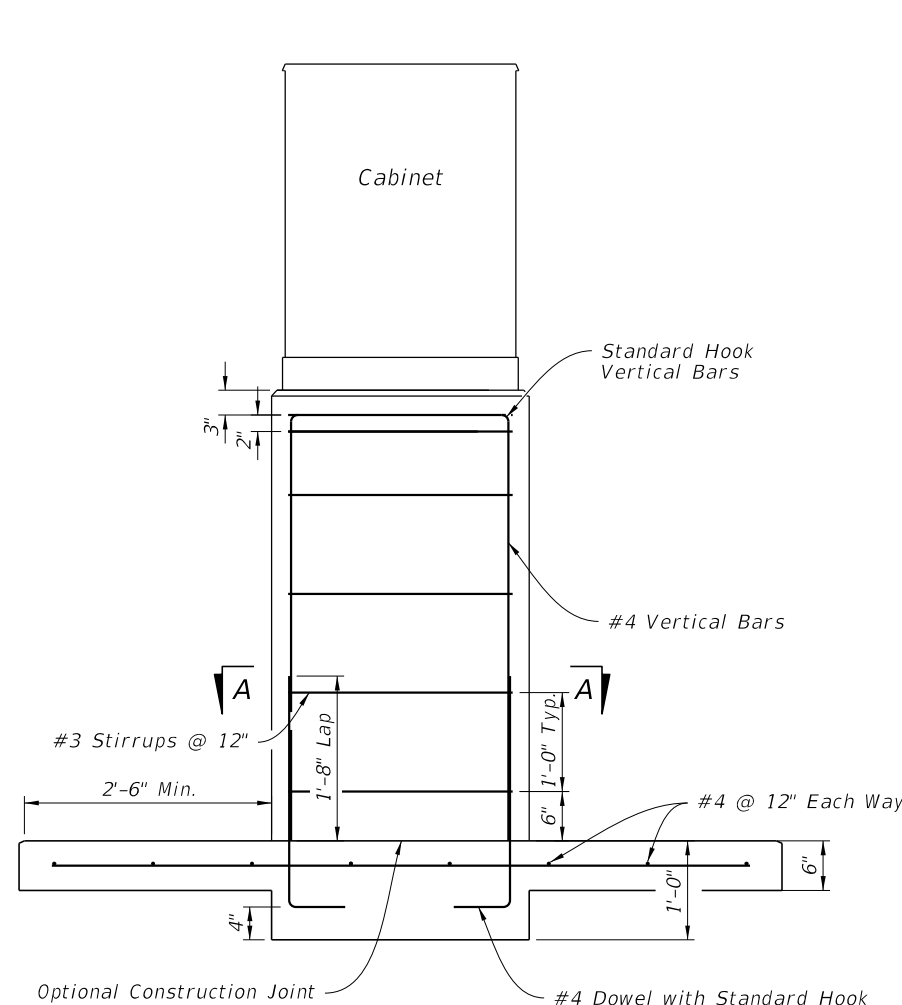


FRONT ELEVATION

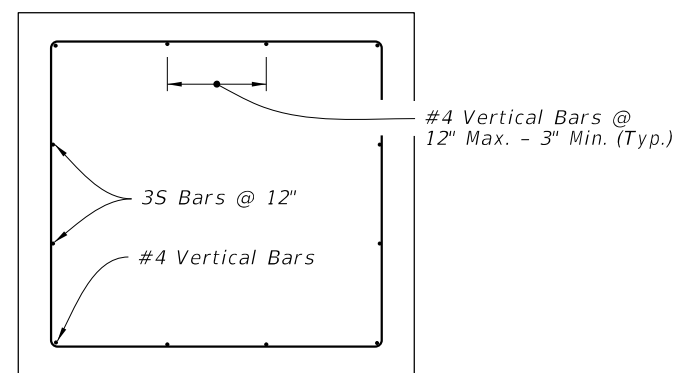
### PEDESTAL MOUNTED CABINET

9/26/2025 3:22:52 PM

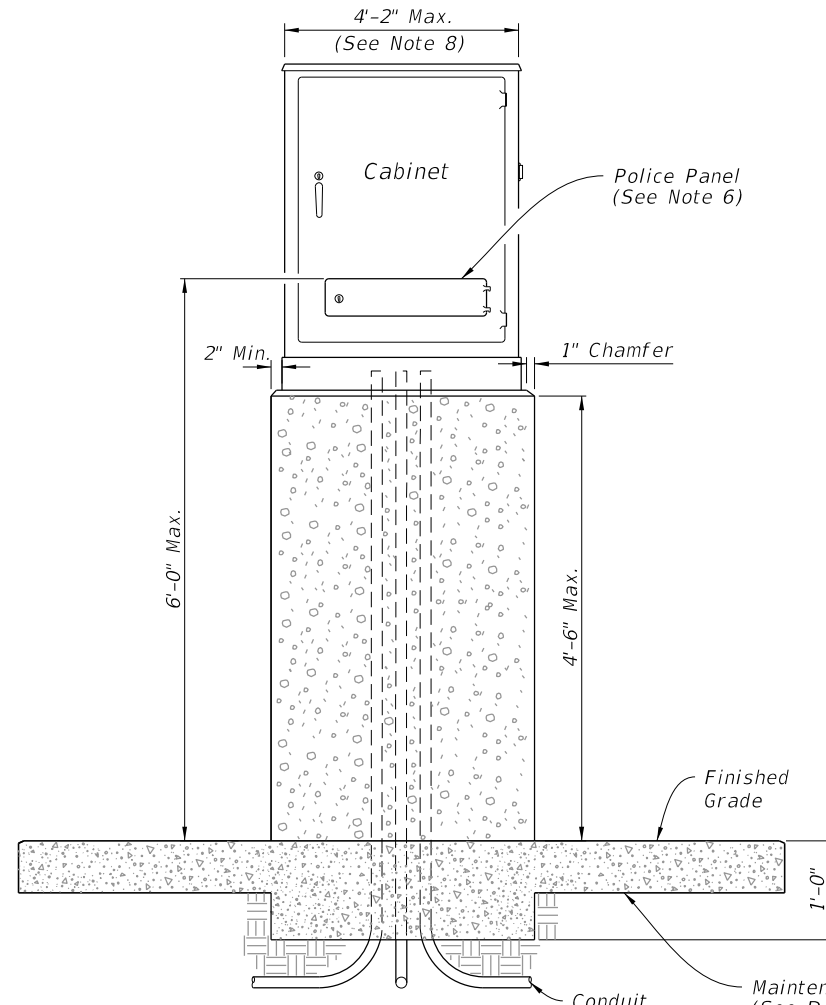
LAST REVISION 11/01/23	REVISION	DESCRIPTION:		FY 2026-27 STANDARD PLANS	CABINET INSTALLATION DETAILS	INDEX 676-010	SHEET 3 of 4
------------------------------	----------	--------------	---	------------------------------	------------------------------	------------------	-----------------



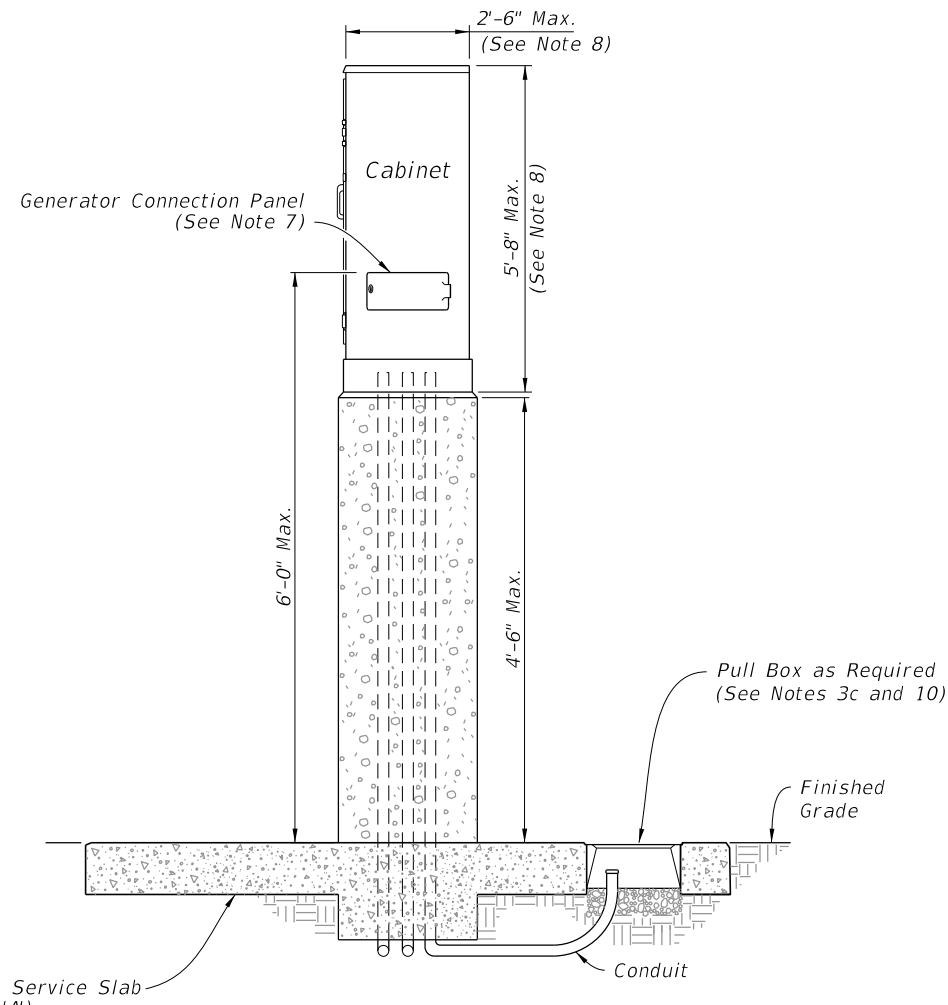
FRONT ELEVATION



SECTION A-A



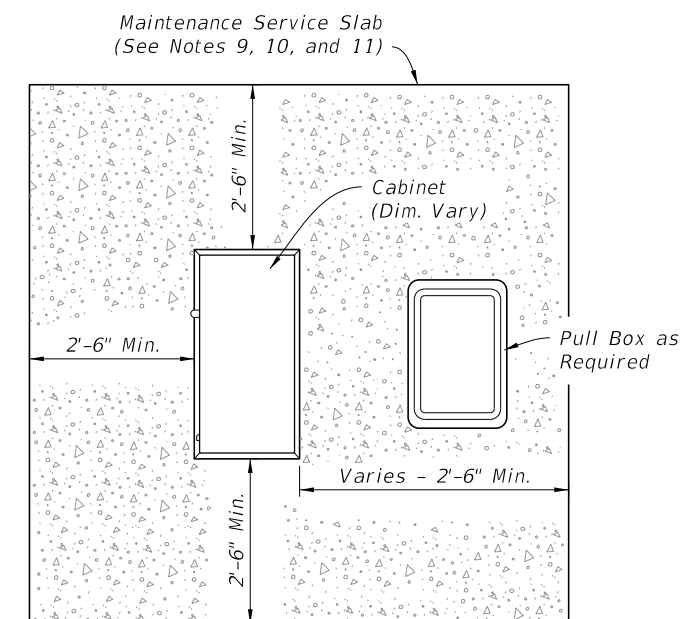
FRONT ELEVATION



SIDE ELEVATION

NOTES:


1. Install cabinet riser as called for in the Plans. Concrete riser shown, for other options, see Specification 676.
2. Concrete:
  - a. Concrete will be in accordance with Specification 346.
  - b. Concrete will be Class IV.
3. Reinforcing:
  - a. Reinforcing will be in accordance with Specification 415.
  - b. All reinforcing steel will have a 2" minimum cover unless noted otherwise.
  - c. Adjust reinforcing to facilitate Pull Box. Add equal number of bars to to either side for each bar interrupted by Pull Box.
4. Generator connection cables will be extended by the same length as the riser's height.
5. Controllor cabinet depicted. ITS cabinet similar.
6. Locate Police Panel at bottom of cabinet assembly.
7. Locate generator connection panel at bottom of cabinet assembly.
8. Riser dimensions shown are based on maximum cabinet dimensions per the APL.
9. Slope maintenance slab  $\frac{1}{4}$ " to 1" for drainage. Not required in sidewalk, pavement areas, or where R/W is restricted.
10. When a pull box is to be placed within the maintenance service slab, the slab width must be extended to provide for the required pull box apron as detailed in Index 635-001.
11. Coordinate placement of maintenance service slab with proposed final grade. Grade and compact side slopes around the maintenance service slab to provide a stable and level working area and tie into the proposed embankment.
12. The number, size and orientation of conduit sweep will vary according to site condition or location. Provide two spare 2" PVC conduits in all bases. Place the exits of the two spare conduits in the direction of the center rear of the cabinet base and into a pull box. If obstructions prevent the spare conduit from existing to the rear, or the rear of the cabinet is located on the R/W line, locate as directed by the Engineer. Cap all spare conduit sweeps with a weatherproof fitting.



PLAN VIEW

DETAIL 'A'

GROUND MOUNTED CONTROLLER CABINET RISER

LAST REVISION 11/01/23	REVISION	DESCRIPTION:		FY 2026-27 STANDARD PLANS	CABINET INSTALLATION DETAILS	INDEX 676-010	SHEET 4 of 4
------------------------------	----------	--------------	---	------------------------------	------------------------------	------------------	-----------------