

GENERAL NOTES:

1. For supplemental information, see Specifications 550.
2. Meet the requirements of the current editions of AASHTO and ASTM references for chain link fabric, posts, truss rods, tension wires, tie wires, stretcher bars, gates and all miscellaneous fittings and hardware.
3. Unless a specific material is called for in the plans the Contractor may elect to use either a single type of material or a combination of material types from the component options listed in the Specificatons. Combinations of optional materials are restricted as follows:

(a) Only one fabric optional material will be permitted between corner and/or end post assemblies.

(b) Only one line post optional material will be permitted between corner and/or end post assemblies.

(c) Pull post assemblies must be optional materials identical to either the line post optional material or the corner and end post assembly optional material; but, pull post assemblies must be the same optional material between any set of corner and/or end post assemblies.
4. Use Class NS concrete for bases as specified in Specification 347 or a packaged, dry material meeting the requirements of a concrete under ASTM C-387. Materials for Class NS concrete can be proportioned by volume and/or by weight.
5. Install 8'-6" Long (Standard) line post. Set line posts in concrete as described above or by the following methods:

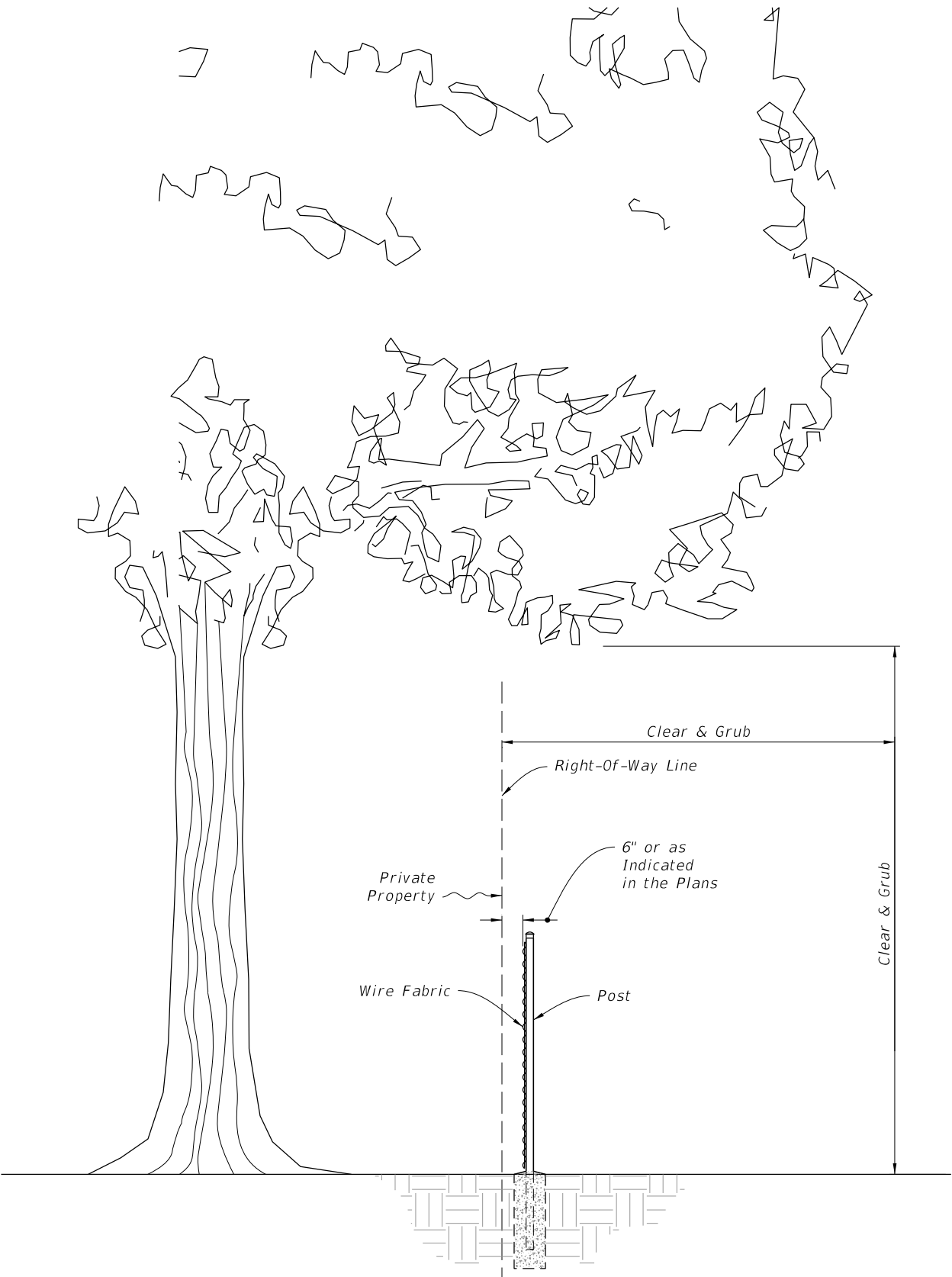
(a) In accordance with special details and/or as specifically described in the Plans and Specifications.

(b) In accordance with ASTM F567 Subsections 5.4 through 5.10 as approved by the Engineer. For line posts installed in accordance with Subsection 5.8 using 9'-6" long posts.

(c) For posts mounted on concrete structure or solid rock do so in accordance with the base plate detail "Fence Mounting On Concrete Endwall And Retaining Walls", Sheet 3; or, by embedment in accordance with ASTM F567 Subsection 5.5.
- Install end, pull, and corner post assemblies in concrete as detailed above for all soil conditions other than solid rock. Post within assemblies that are located on concrete structures or solid rock must be set by base plate or by embedment as prescribed under (b) above for line post.
- For 6' fence that must be lengthened due to a variation in the normal ground clearance, set line post assemblies an additional 3" in depth for each 1' of of additional ground clearance.
6. Use pull post at breaks in vertical grades of 15° or more, or at approximately 350' centers except that this maximum interval may be reduced by the Engineer on curves where the curve is greater than 3°.
7. Install corner post at all horizontal breaks in fence at 15° or more and as required at vertical breaks over 15° as determined by the Engineer.
8. When fence has an installed top of fabric height less than 6' knuckled top and bottom selvages must be used unless the plans specifically identify locations for twisted selvaqe fabrics.
9. Unless sliding gates or special gates are called for in the plans, all gates must be chain link swing gates meeting the material requirements described and as approved by the Engineer.
10. For construction purposes corner post assemblies must consist of one corner post, two braces, two truss rods, and all necessary fittings and hardware as detailed. End post assemblies must consist of one end post, one brace, one truss rod and all necessary fittings and hardware as detailed.
11. In areas where there are physical constraints outside the right-of-way which restricts the fence construction, the fabric may be installed on the inside of the posts.
12. Install Electrical Grounds for Fence(s) that are installed within Electrical Transmission Right(s) of Way in accordance with Specification 550.

TABLE OF CONTENTS:

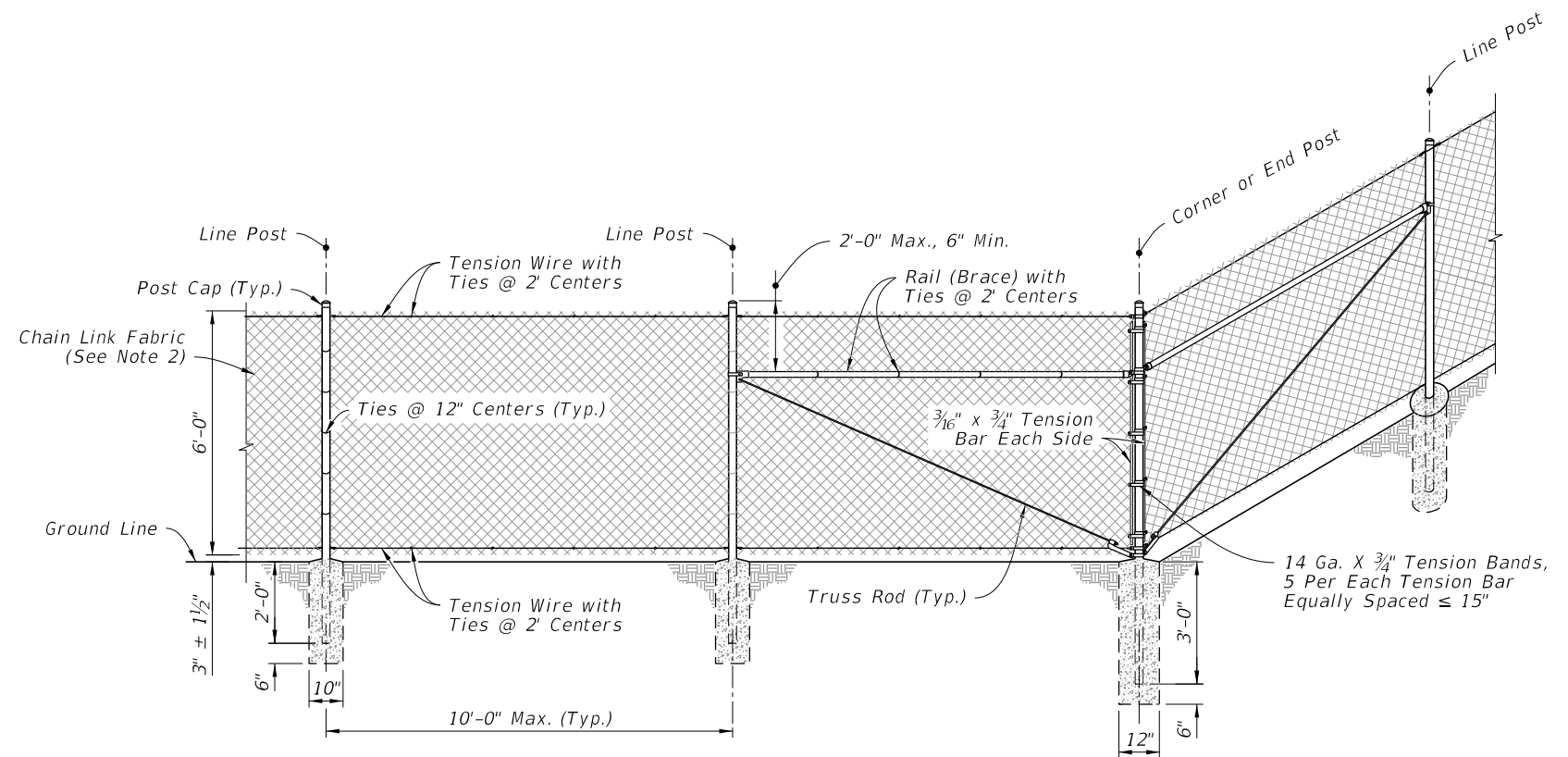
Sheet	Description
1	General Notes and Contents
2	Corner or End Post Details and Pull Post Details
3	C Line Post, H-Beam Line Post, Fence Mounting on Concrete Wall and Retaining Walls, and Barb Wire Attachment



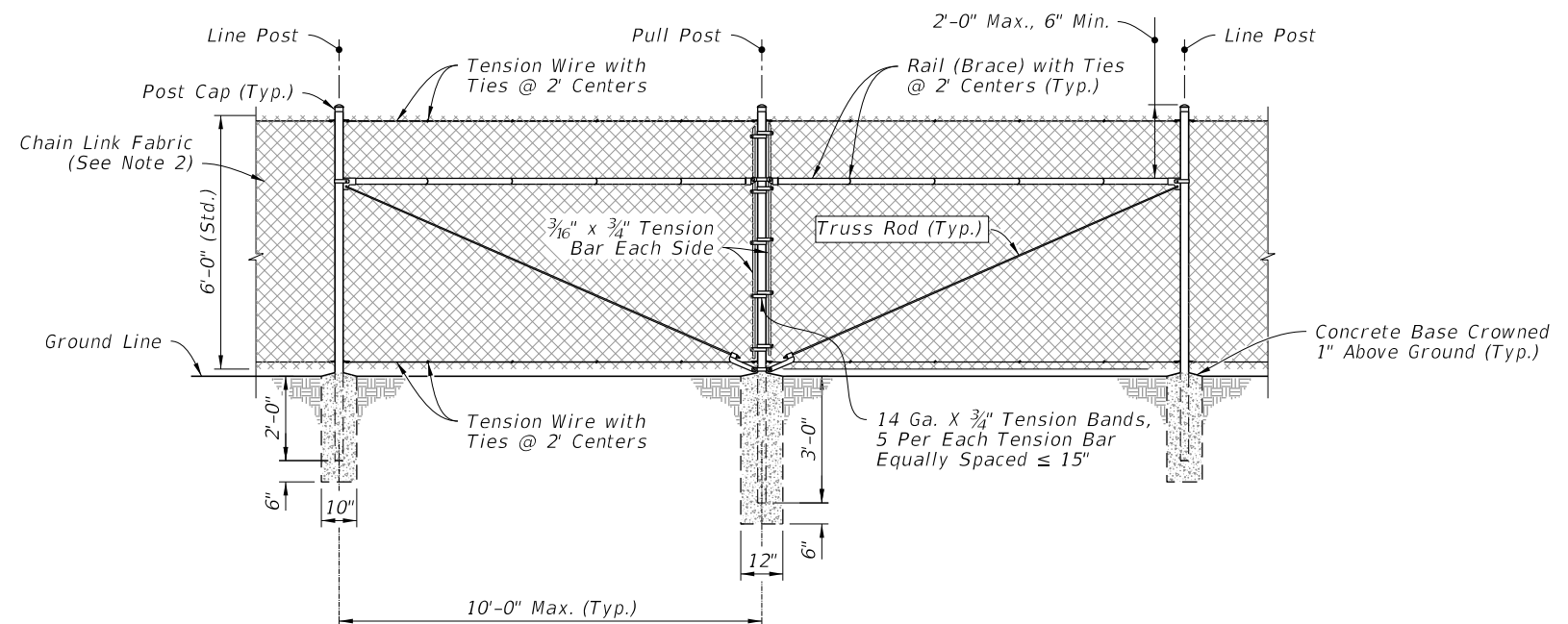
FENCE POSITION AT LOCATIONS WITHOUT FRONTAGE ROADS
(REFER TO DETAIL PLANS FOR FENCE POSITION AT LOCATIONS WITH FRONTAGE ROADS)

9/26/2025 3:00:43 PM

LAST REVISION	DESCRIPTION:	FDOT	FY 2026-27 STANDARD PLANS	FENCE TYPE B	INDEX	SHEET
11/01/25					550-002	1 of 3



= CORNER OR END POST DETAILS:

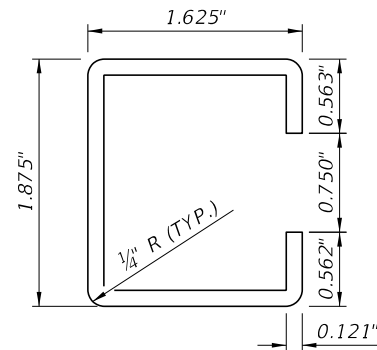


= PULL POST DETAILS

CORNER OF END POST DETAILS AND PULL POST DETAILS

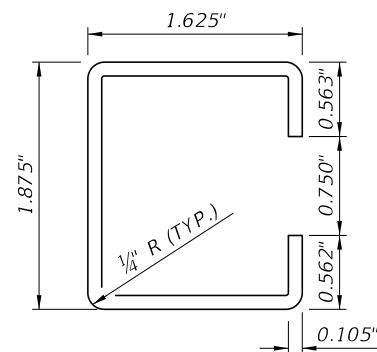
NOTES:

1. *Tubular post shown, others similar.*
2. *Install No. 9 chain link fabric mesh, twisted and barbed top and bottom selvage. See Specification 550.*



Galv. Wt. Per. Ft.= 2.34#±5%
Yield PSI (Min.) 45,000

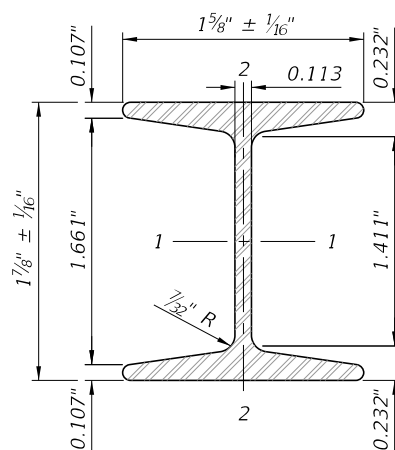
STANDARD WALL



Galv. Wt. Per. Ft.= 1.85#±5%
Yield PSI (Min.) 45,000

THIN WALL

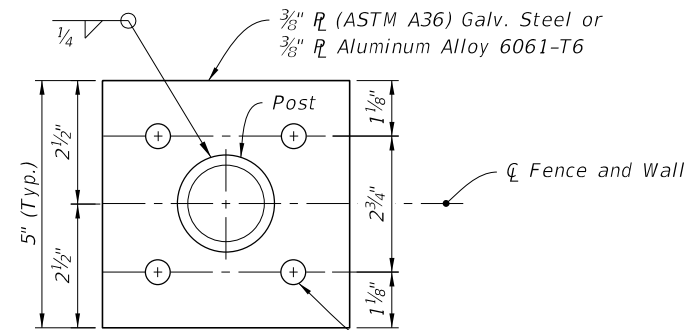
OPTIONAL "C" LINE POST



	STEEL	ALUMINUM
Area (Sq. In.)	724	724
Weight (Lb./Ft.)	2.72 ± 5% (Galv.)	0.91 ± 5%
Surface Area (SF/Ft.)	0.776	0.776
Tensile Strength (psi Min.)	80,000	30,000
Yielding Point (psi Min.)	48,000	25,000

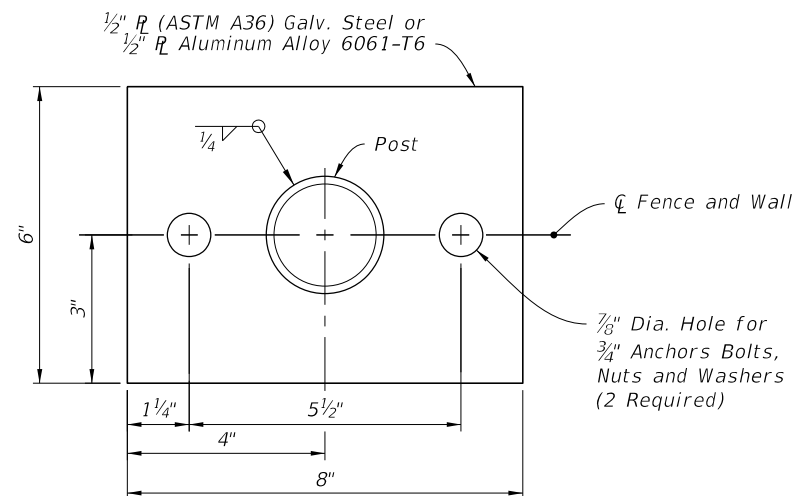
	Axes		Axes	
	1-1	2-2	1-1	2-2
Moment of Inertia	0.428	0.101	0.428	0.101
Section Modulus	0.456	0.124	0.456	0.124
Rad. of Gyration	0.779	0.373	0.779	0.373

OPTIONAL 1 7/8" x 1 5/8" H-BEAM LINE POST



PLAN VIEW

FOUR ANCHOR PLATE



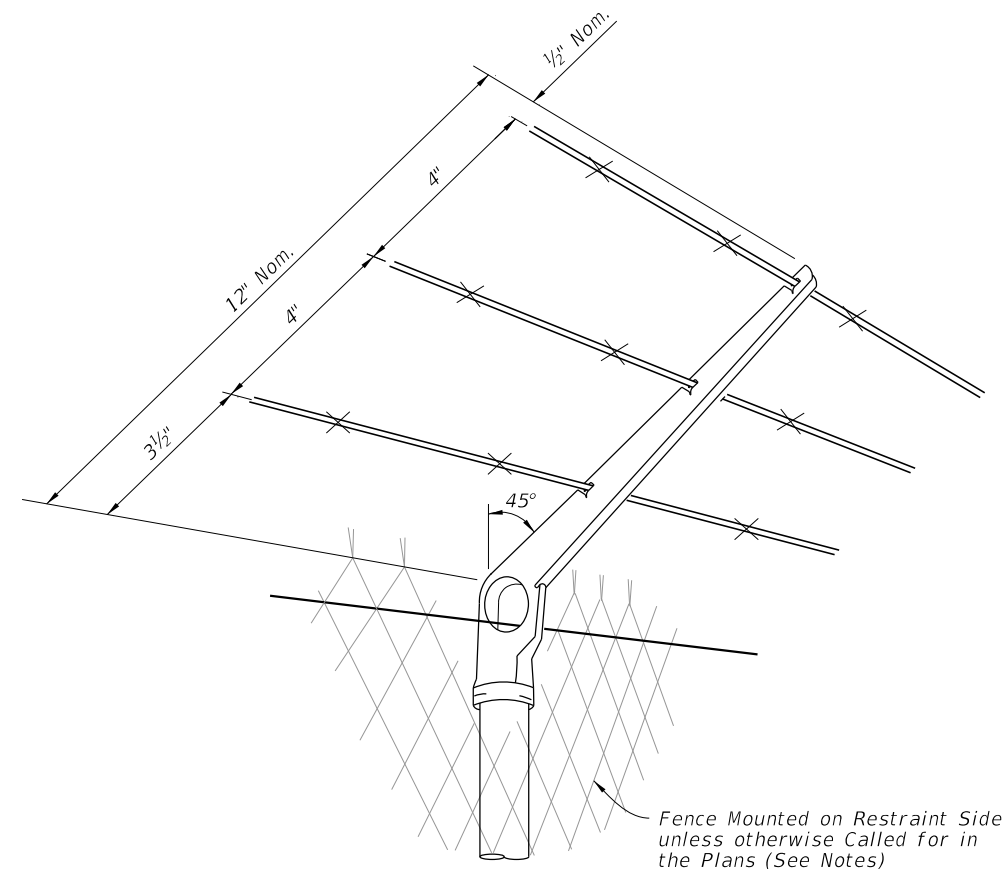
PLAN VIEW

TWO ANCHOR PLATE

NOTES:

- Base plate identical for line, pull, end and corner posts and considered an integral part of the respective posts for basis of payment.
- Post to be plumbed by grout shim under base plate.
- Anchors (Galvanized Steel):
 - 12" Cast In Place, 10 1/2" Embedment: Headed Bolts, U-Bolts or Cluster Plates.
 - 8" Adhesive Anchors, 6" Min. Embedment. Adhesive anchors must be headless anchor bolts set in drilled holes with an Adhesive Material System in accordance with Specifications 416 and 937; drilled holes must be 1/8" larger in diameter than the anchor bolt.
- Expansion Bolts Not Permitted.

FENCE MOUNTING ON CONCRETE ENDWALL AND RETAINING WALLS



NOTES:

- Attachments to be used only when called for in the plans.
- Attachments to extend in direction of restraint. Unless otherwise called for in plans, direction of restraint will be as follows:
 - Outward on limited access right of way line.
 - Outward on controlled access right of way line.
 - Outward from utilities and hazardous facilities located within highway right of way.
 - Outward from lateral ditches, outfalls, retention basins, canals, borrow areas and similar support facilities.
 - Inward on pedestrian ways.
- Cap-arm must be designed to provide a drive fit over the top of posts and exclude moisture in posts with tubular sections.

BARB WIRE ATTACHMENT

C LINE POST, H-BEAM LINE POST, FENCE MOUNTING ON CONCRETE WALL AND RETAINING WALLS, AND BARB WIRE ATTACHMENT