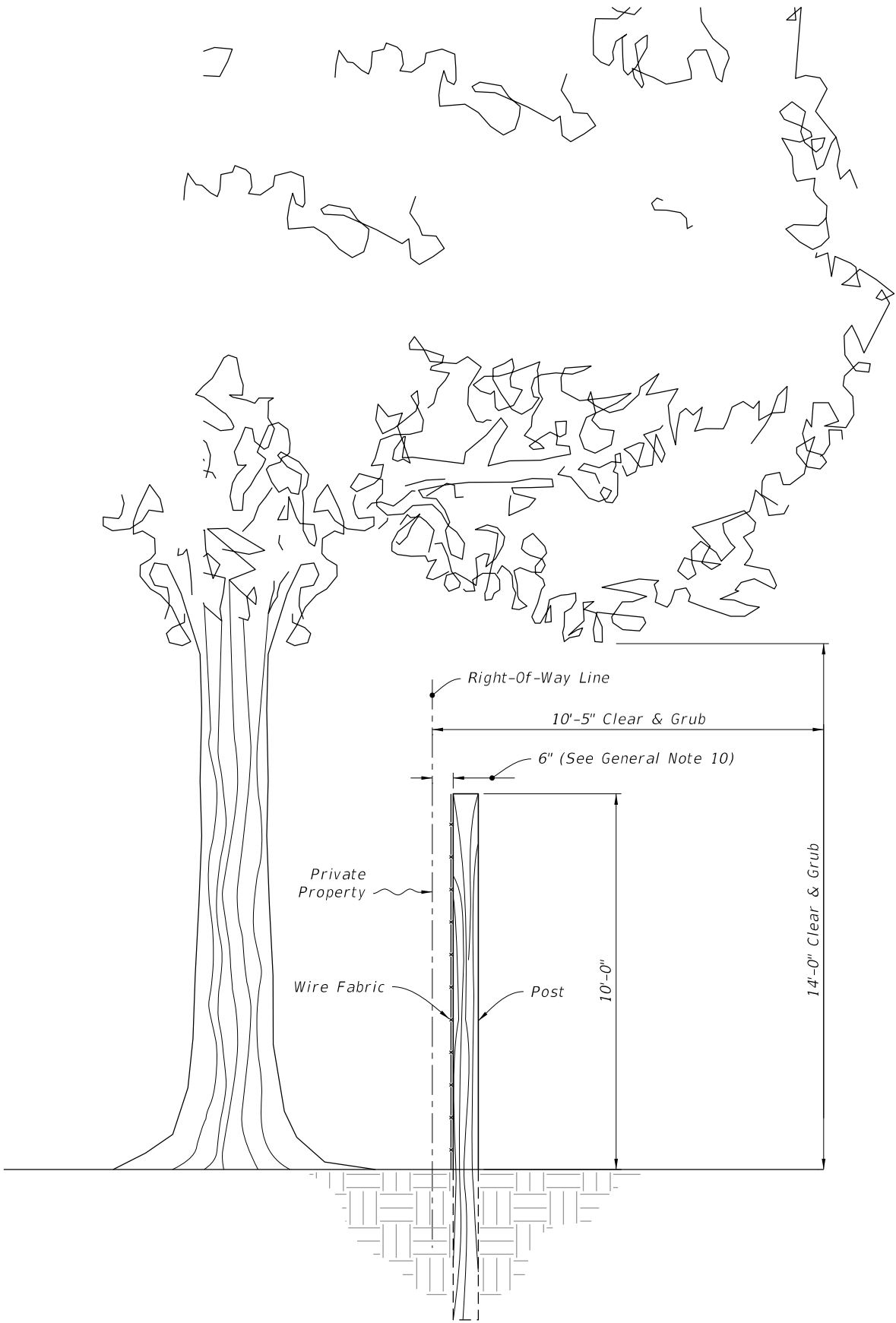


9/26/2025 2:58:03 PM

GENERAL NOTES:

1. For supplemental information, see Specifications 550.
2. Install woven wire side on either side of fence. Install fence, on horizontal curves greater than 3°, so as to pull against all posts.
3. Connections between timber posts and braces to be provided by dowels as shown in fastener details.
4. Stretch woven wire only until one-half the tension curl has been pulled out of the line wires.
5. Set posts by driving or digging. If by digging, set the post at the center of the hole and the soil tamped securely on all sides.
6. Longer posts than those indicated in this Index may be required in the Plans or for deeper installations.
7. Install pull post assemblies at approximately 330' centers except that this maximum interval may be reduced by the Engineer on curves where the degree of curvature is more than 3°.
8. Install corner post assemblies at all horizontal and vertical breaks in fence of 15° or more.
9. Install Electrical Grounds for Fence(s) that are installed within Electrical Transmission Right(s) of Way in accordance with Specification 550.
10. Install fence 6" inside the Right of Way line unless otherwise indicated in the Plans or by the Engineer.

TABLE OF CONTENTS:	
Sheet	Description
1	General Notes and Contents
2	5' Farm Fence - General Details
3	5' Farm Fence - Concrete Post, Brace, and Fasteners
4	10' Wildlife Fence - General Details
5	Timber Post and Brace Fasteners and Fencing Details at Culvert



FENCE POSITION AT LOCATIONS WITHOUT FRONTAGE ROADS

(Refer to Detail Plans for Fence Position at Locations With Frontage Roads)
(Wildlife Fence Shown, Farm Fence Similar)

LAST
REVISION
11/01/25

REVISION

DESCRIPTION:

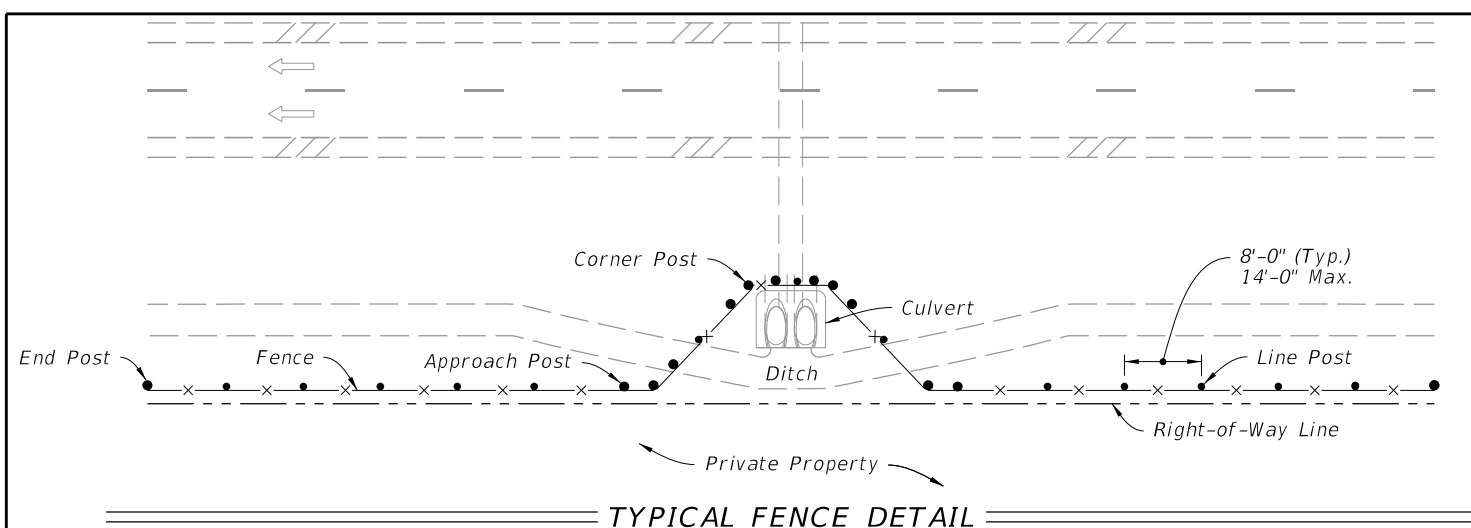


FY 2026-27
STANDARD PLANS

FENCE TYPE A

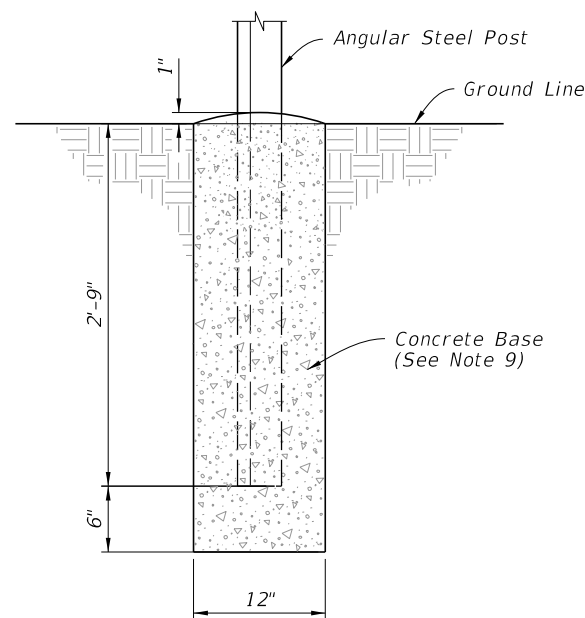
INDEX
550-001

SHEET
1 of 5



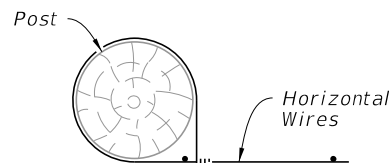
NOTES:

- Posts may be either timber, steel, recycled plastic or concrete meeting the requirements of Specification 550. Unless a specific post material is called for in the plans, the Contractor may elect to use either a single material or a combination of timber, steel, recycled plastic or concrete materials with Engineer approval.
- Install 2 No. 9 gage wires twisted to singing tightness, steel wire, soft temper, galvanized at the rate of 0.8 oz./ft. : ASTM A641.
- Fence with flexible joint and hump or tension curl, meeting the requirements of Specifications 550.
- For timber, staples for line posts to be $1\frac{1}{4}$ " minimum length; for approach, corner, and pull posts $1\frac{1}{2}$ " minimum length. At approach, corner, and pull posts, staple every line wire. At line posts, staple every line wire in top half and alternate line wires in bottom half. Drive staples diagonally across the line wire with the points in separate grains.
- Wrap and tie wire, as shown in the splice details, at the following locations:
 - All end posts
 - Corner posts, including the assemblies at vertical breaks of 15° or more
 - Pull posts where the wire is not spliced and pulled through the assembly (See Note 10)
- Steel pull, corner, approach and end posts are to be set in concrete as per detail. (See Note 9)
- For recycled plastic posts, connect fabric and barbed wire to plastic line posts using staples the same size, count, and in the same locations as for timber posts.
- Do not use aluminum posts, braces, and accessory frame hardware unless the Plans specifically detail their application or the Engineer specifically approves their incorporation in fence construction or repair. Aluminum framed gates are permitted as described in Note 11.
- Use Class NS concrete in accordance with Specification 347 for Concrete bases for angular steel posts (pull, corner, end, and approach). Materials for Class NS concrete can be proportioned by volume and/or by weight.
- A maximum length of 1320' of wire may be installed as a unit. For pulls through a pull post assembly, splice the fabric by crimping sleeves only. Pulls through a corner post assembly will not be permitted.
- Unless otherwise called for in the Plans, gates to be commercially available metal swing gates assembled and installed in accordance with the manufacturer's specifications as approved by the Engineer. Chain link swing gates in accordance with 550-002 may be substituted for metal swing gates as approved by the Engineer. Gate size is full opening width whether single leaf or double leaves.

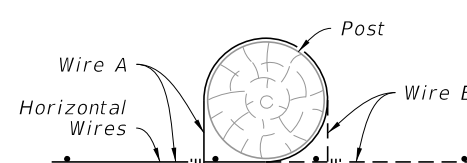


(Pull, Corner, End and Approach Posts)

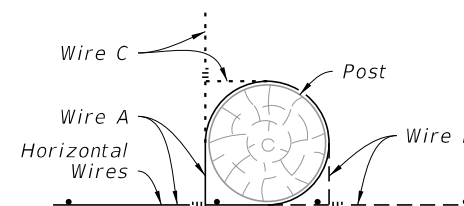
CONCRETE BASE FOR ANGULAR STEEL POST



END POST



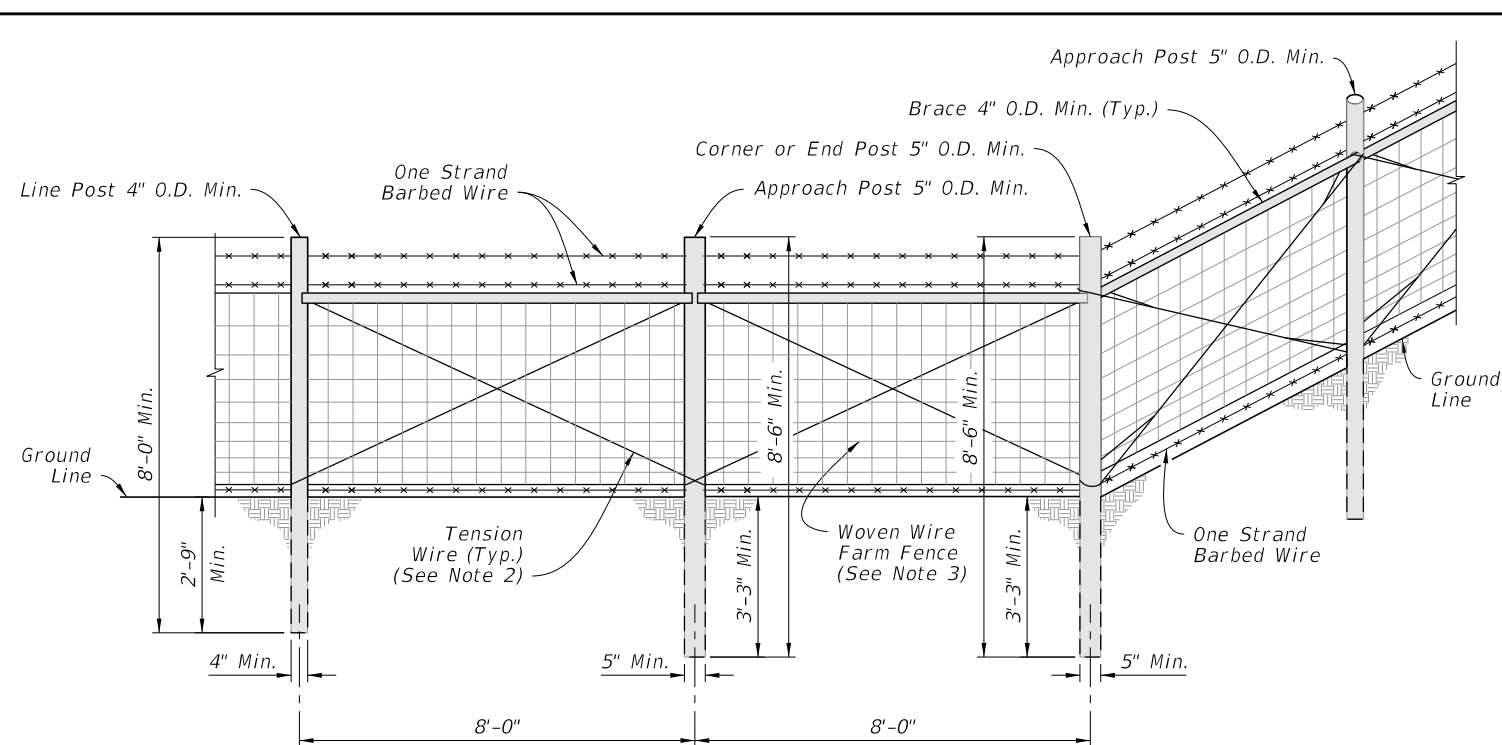
PULL POST



CORNER

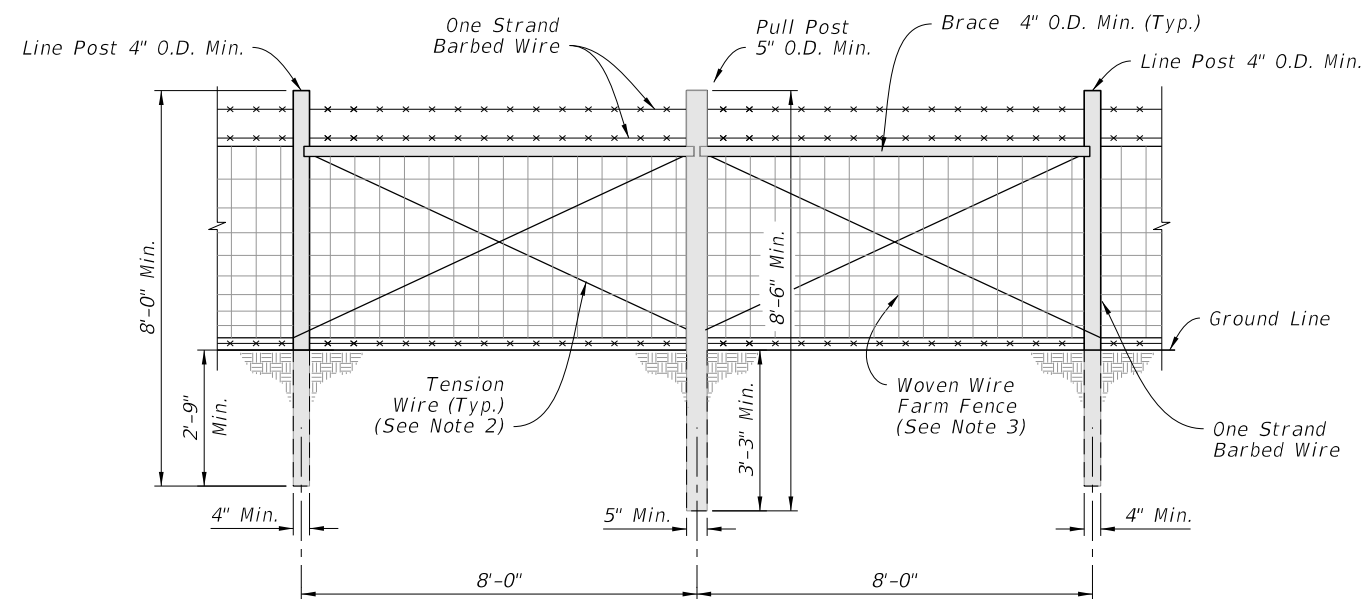
Each horizontal wire to be wrapped around corner, end, and pull posts are tied to same wire. See Note 5 and General Note 8. These methods also apply to steel and concrete post.

WOVEN WIRE SPLICES



(Timber Post Shown. Steel, Recycled Plastic, and Concrete Post Similar)

CORNER OR END POST DETAILS

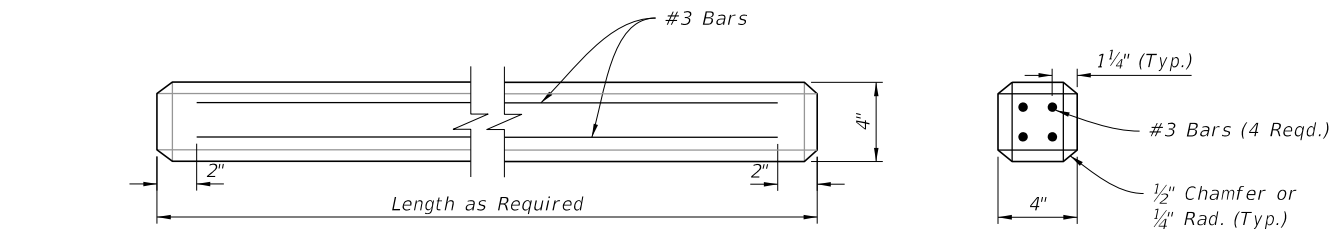


(Timber Post Shown. Steel, Recycled Plastic, and Concrete Post Similar)

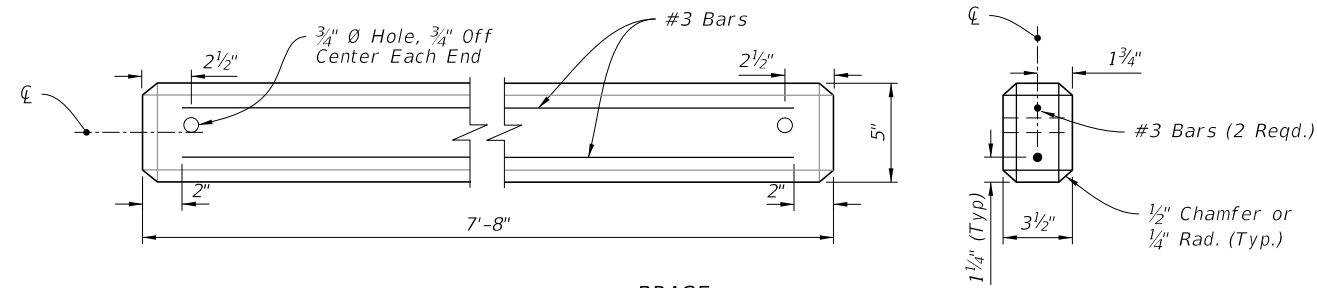
PULL POST DETAILS

5' FARM FENCE - GENERAL DETAILS

LAST REVISION	DESCRIPTION:	FY 2026-27 STANDARD PLANS	FENCE TYPE A	INDEX	SHEET
11/01/25				550-001	2 of 5

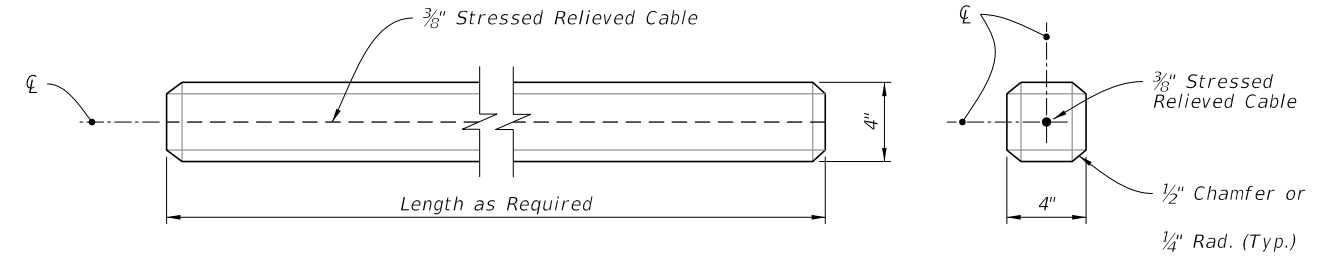


POST

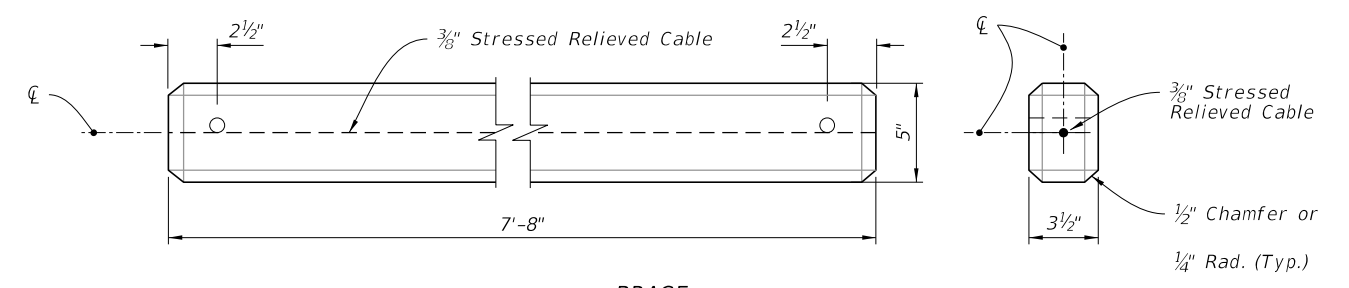


BRACE

PRECAST



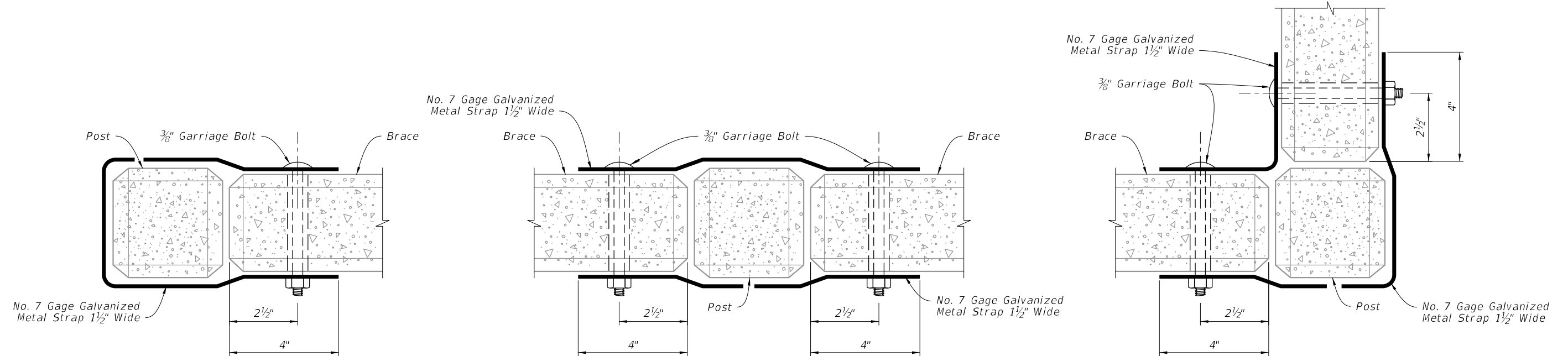
POST



BRACE

PRESTRESSED

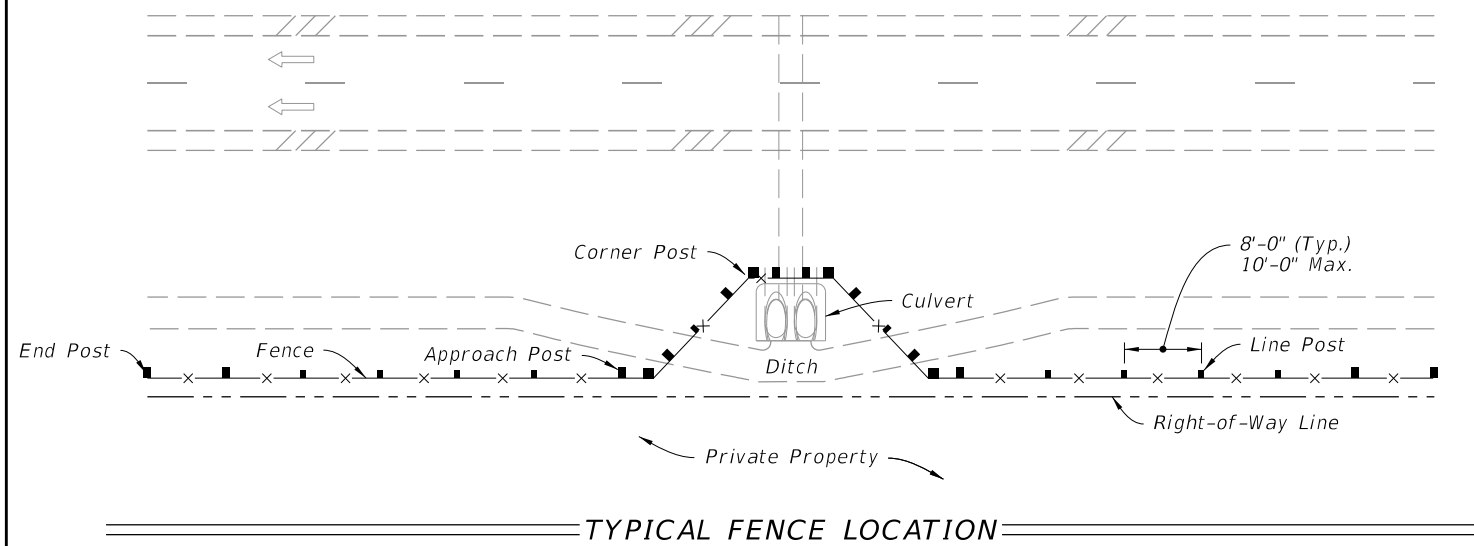
CONCRETE POSTS AND BRACES



CONCRETE POST AND BRACE FASTENERS

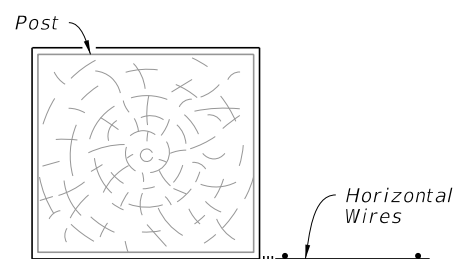
5' FARM FENCE - CONCRETE POSTS, BRACE AND FASTENERS

LAST REVISION 11/01/25	REVISION	DESCRIPTION:	FDOT FY 2026-27 STANDARD PLANS	FENCE TYPE A	INDEX 550-001	SHEET 3 of 5
------------------------------	----------	--------------	--------------------------------------	--------------	------------------	-----------------

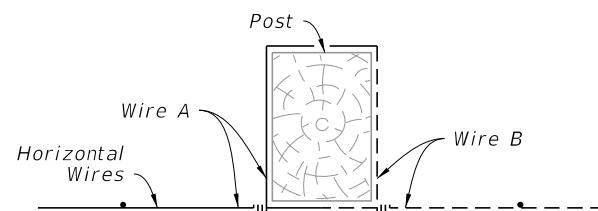


NOTES:

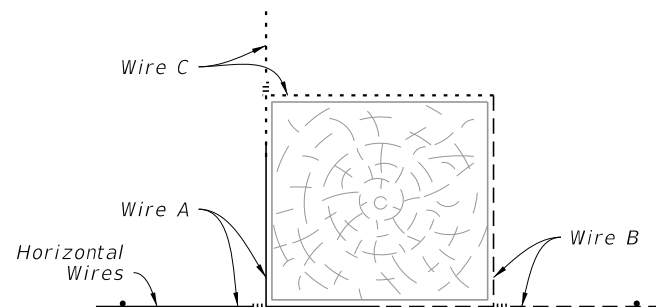
1. Post material(s) other than timber are prohibited. However, the contractor has the option of using metal posts in wetland areas (tangent sections only) at no additional cost to the Department.
2. For timber, staples for line posts are to be $1\frac{1}{4}$ " minimum length; for approach, corner, and pull posts, staple every line wire. At line posts, staple every line wire in top half and alternate line wires in bottom half. Drive staples diagonally across the line wire with the points in separate grains.
3. Install barbed wire and fence fabric in accordance with Specification 550.
4. Fence wire to be spliced with high-tensile fence splicing sleeves. Hand knotting/wrapping wire is not permitted. Splice all line wire unless otherwise directed by the engineer.
5. A maximum length of 660' of fence may be installed as a unit. For pulls through a pull post assembly, splice the fabric with high tensile fence splicing sleeves. Pulls through a corner post assembly will not be permitted.
6. Barbed wire is not to exceed 1" above natural ground between any post. Extra line post may be required.
7. Removal of existing fence is restricted to that which can be replaced with Wildlife Fence within the same work operation.
8. Clear and grub the area measuring 10.5' horizontally and 14' vertically from the fence line.
9. Tension wire to be two No. 9 gage wires twisted to singing tightness, steel wire, soft tempered, galvanized at the rate of 1.8 oz./ft², ASTM A641.



END POST



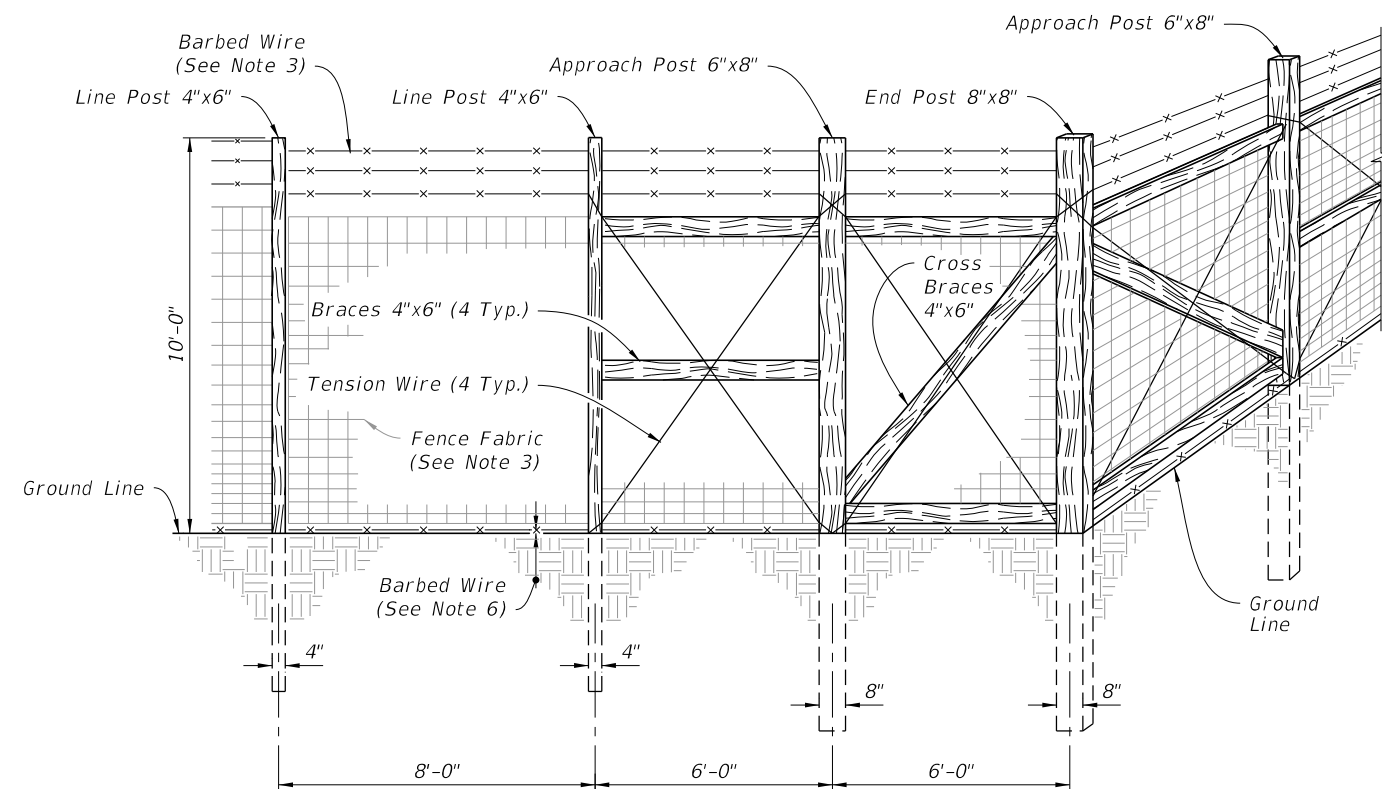
PULL POST



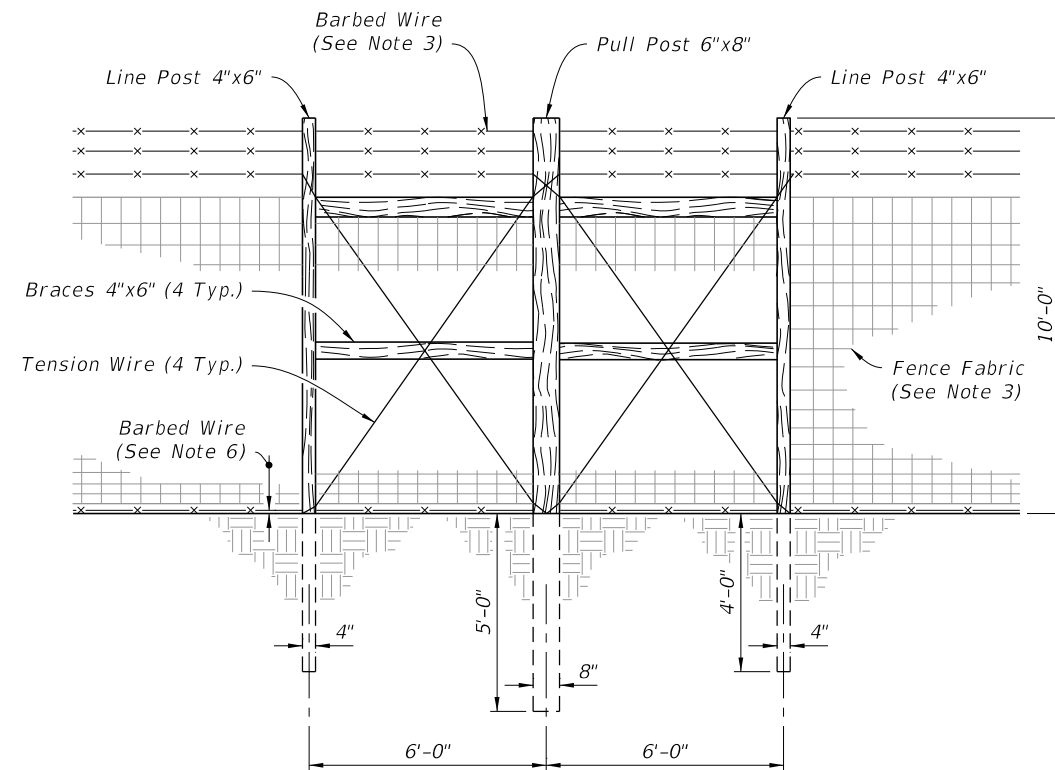
CORNER

Each horizontal wire to be wrapped around corner, end, and pull posts are tied to same wire. See Note 4 and General Note 8.

WOVEN WIRE SPLICES



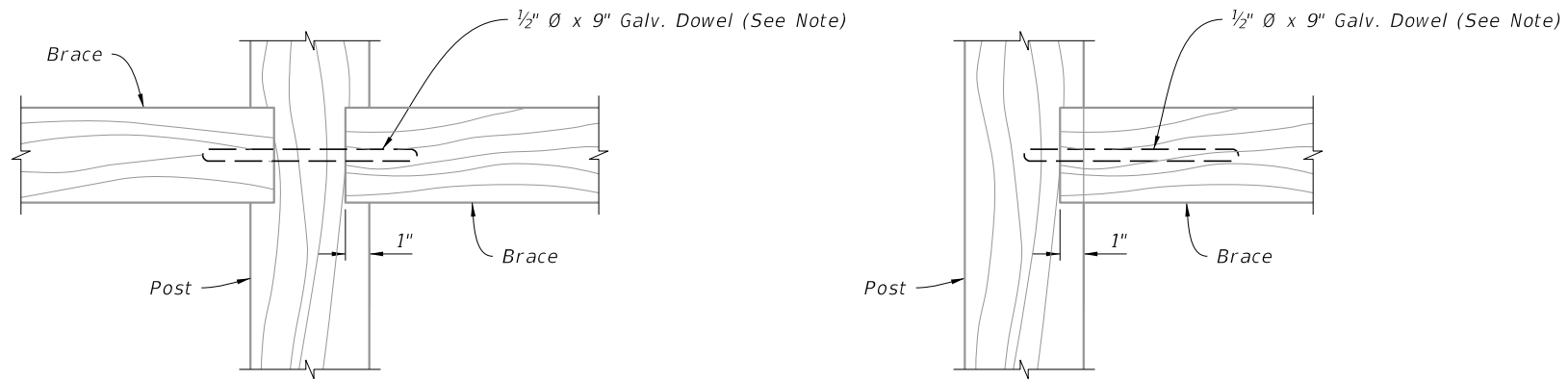
CORNER OR END POST DETAIL



PULL POST DETAIL

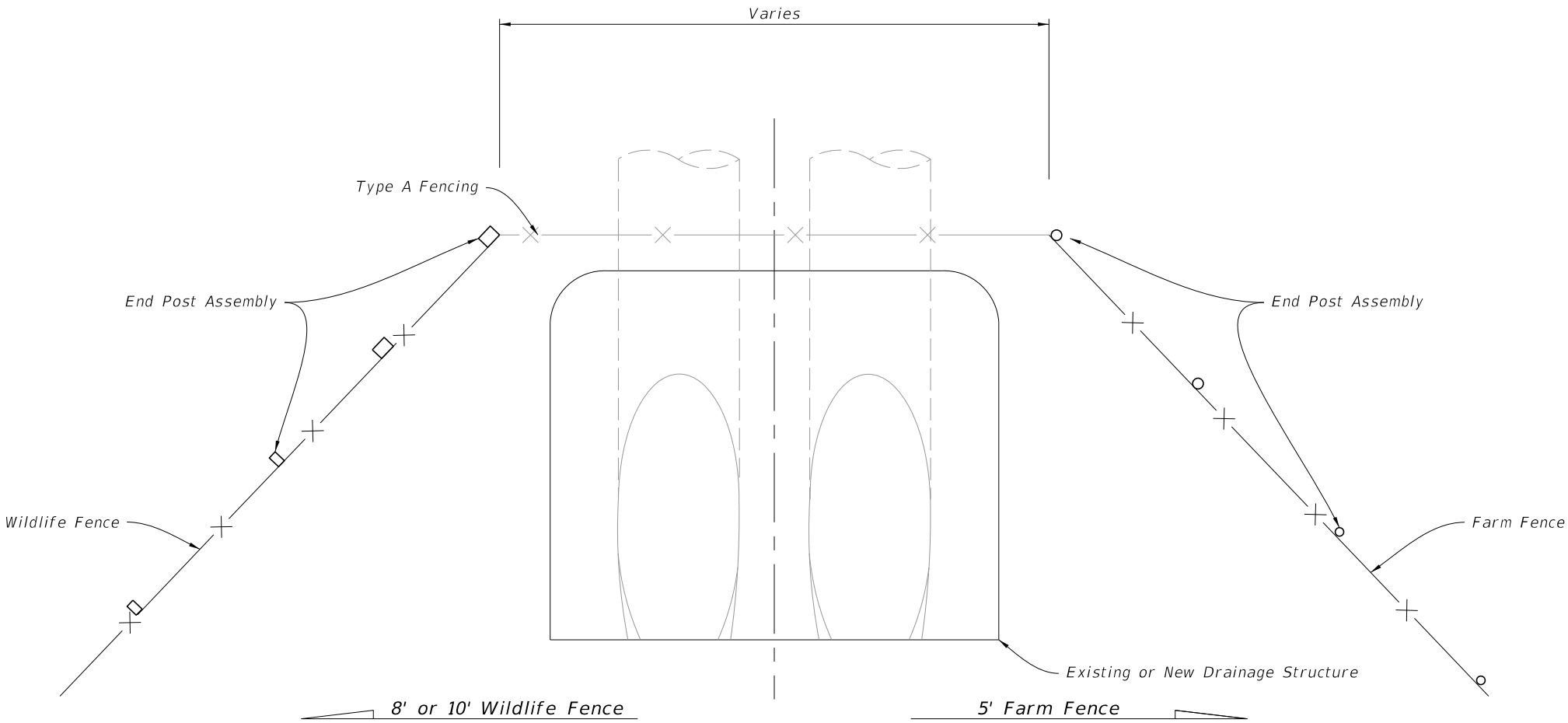
10' WILDLIFE FENCE - GENERAL DETAILS

LAST REVISION 11/01/25	DESCRIPTION:	FDOT FY 2026-27 STANDARD PLANS	FENCE TYPE A	INDEX 550-001	SHEET 4 of 5
------------------------------	--------------	--------------------------------------	--------------	------------------	-----------------




NOTE:
Hurricane clips or mending plates on either side of brace may be substituted.

TIMBER POST AND BRACE FASTENER



FENCING DETAIL AT CULVERT

TIMBER POST AND BRACE FASTENERS AND FENCING DETAILS AT CULVERT

LAST REVISION 11/01/25	REVISION	DESCRIPTION:	 FY 2026-27 STANDARD PLANS	FENCE TYPE A	INDEX 550-001	SHEET 5 of 5
------------------------------	----------	--------------	--	--------------	------------------	-----------------