

**NOTES:**

1. On approach end provide Index 536-002 (as shown) or other site specific treatment, see Roadway Plans. For treatment of trailing end see Roadway Plans.
2. Actual joint dimension and orientation vary. For Intermediate Deck Joints use the Modified Post Spacing at Intermediate Deck Joints Detail, Index 460-470, Sheet 2, as required.
3. Areas where existing structure has been removed shall match adjoining areas and shall be finished flat by grouting or grinding as required. Exposed existing reinforcing steel shall be burned off 1" below existing concrete and grouted over.

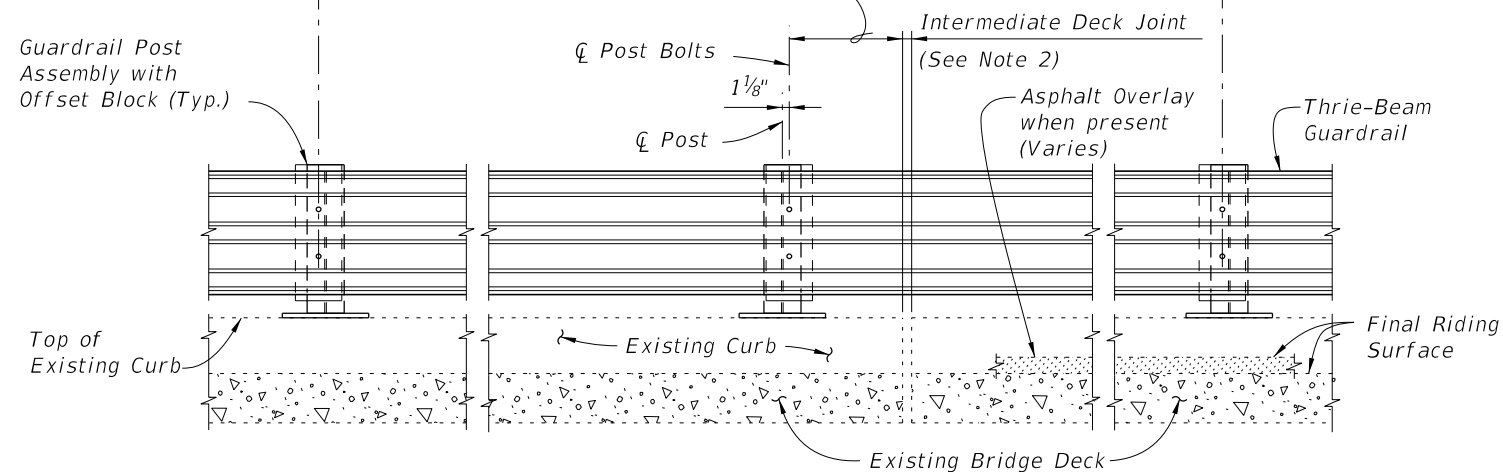
**PARTIAL PLAN OF RAILING**  
(Adhesive Anchor Option shown, Screw Anchor Option similar)

∅ Post Bolts and Match Line (Trailing End) (See Sheets 3 and 4)

∅ Post Bolts and Match Line (Approach End) (See Sheets 3 and 4)

6'-3" spacing (Typ. except as noted along Bridge, see Note 2)

1'-6" Min. for non skewed joints. For treatment of skewed Intermediate Deck Joints see Skew Detail Index 460-470, Sheet 2 (Typ.)




**PARTIAL ELEVATION OF INSIDE FACE OF RAILING**

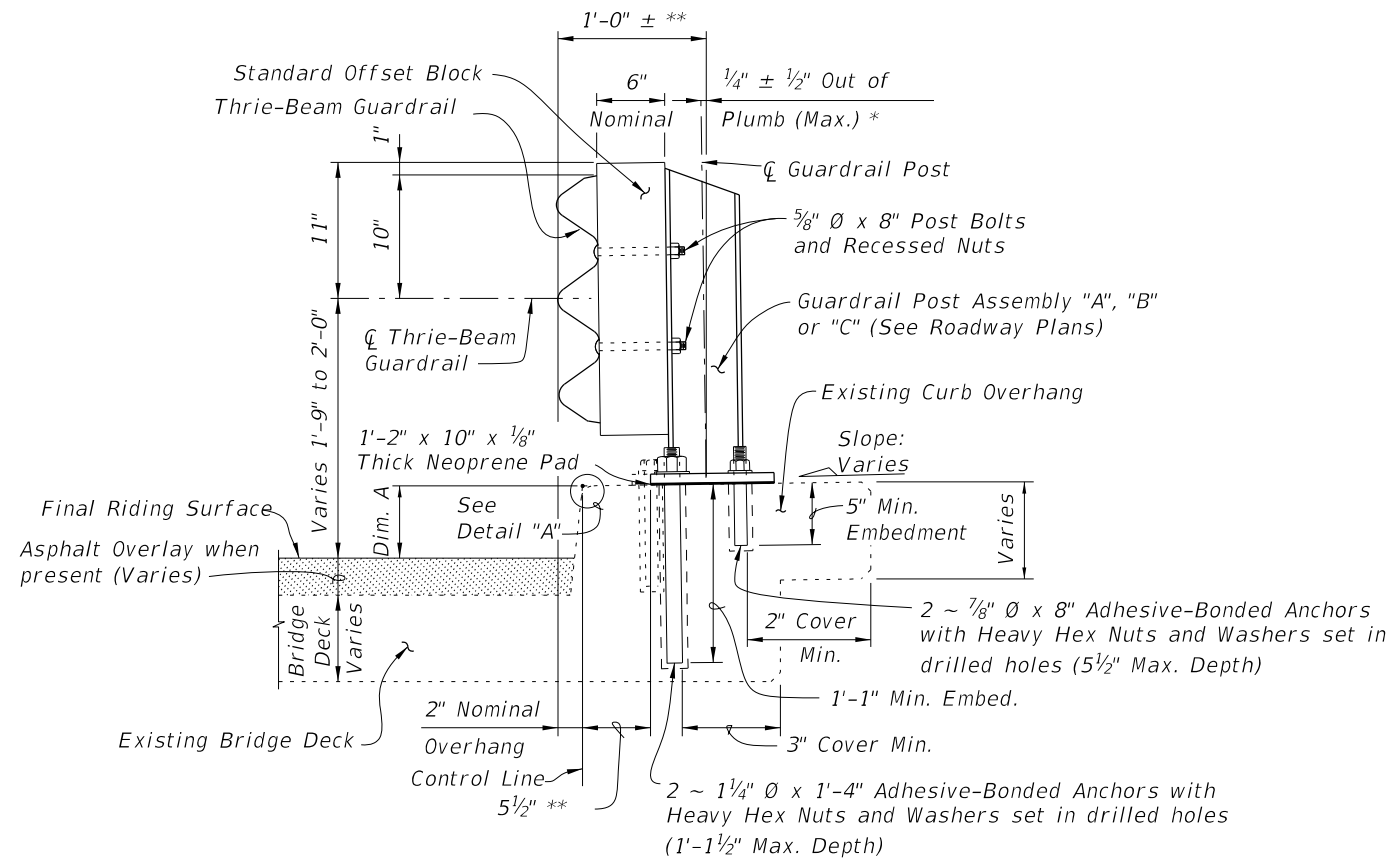
==== **TYPICAL TREATMENT OF RAILING ALONG BRIDGE** ====

**CROSS REFERENCES:**

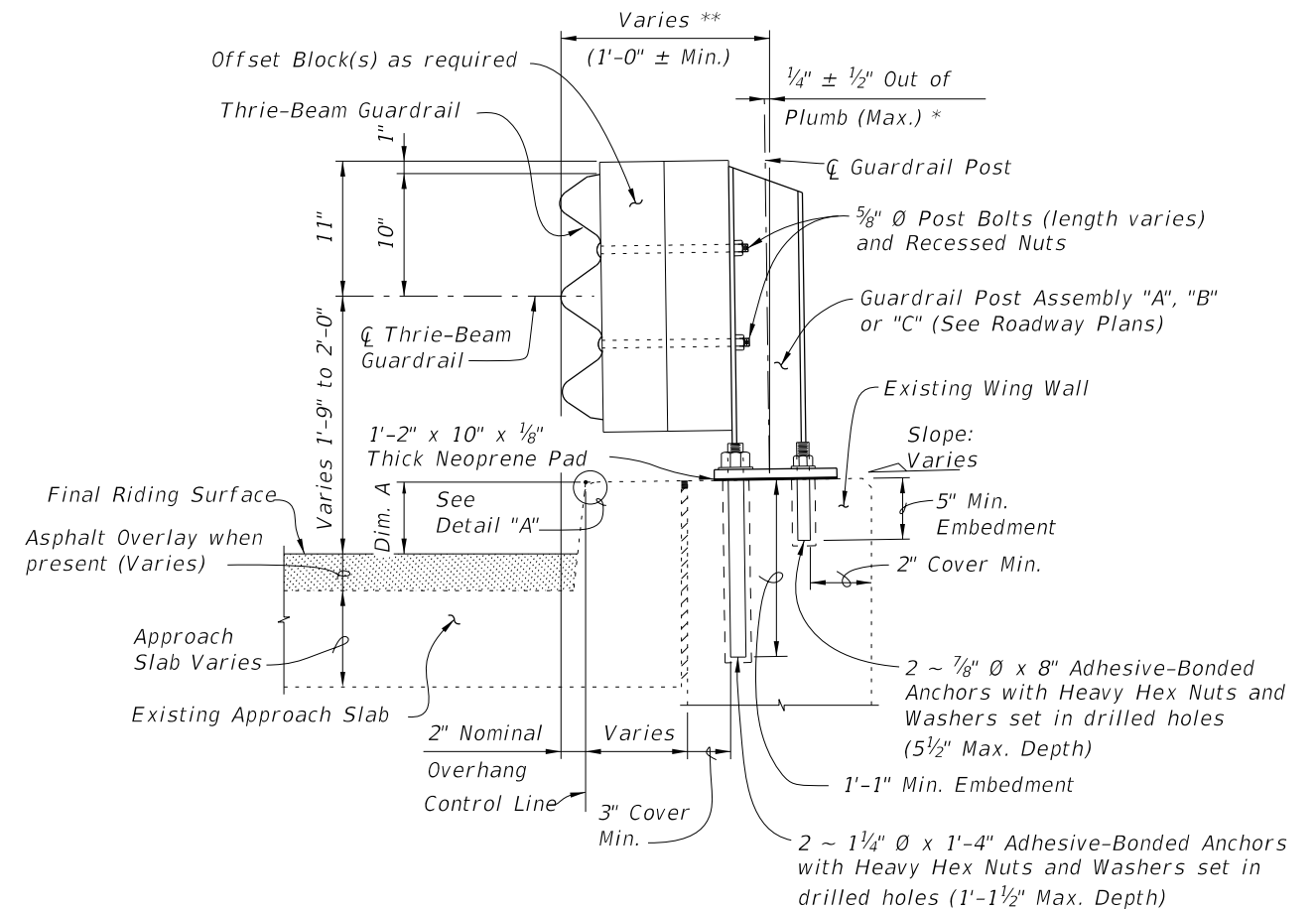
- For Match Line see Sheets 3 & 4.
- For Section A-A see Sheet 2.
- For Traffic Railing Notes and Details see Index 460-470.

10/6/2025 3:01:09 PM

LAST REVISION 11/01/24	REVISION	DESCRIPTION:		FY 2026-27 <b>STANDARD PLANS</b>	<b>TRAFFIC RAILING - (THRIE-BEAM RETROFIT)          INTERMEDIATE CURB</b>	INDEX <b>460-474</b>	SHEET <b>1 of 4</b>
---------------------------	----------	--------------	---	-------------------------------------	---	-------------------------	------------------------



**SECTION A-A**  
**TYPICAL SECTION THRU RAILING ON BRIDGE DECK**  
 (Adhesive Anchor Option shown solid, Screw Anchor Option shown dashed)

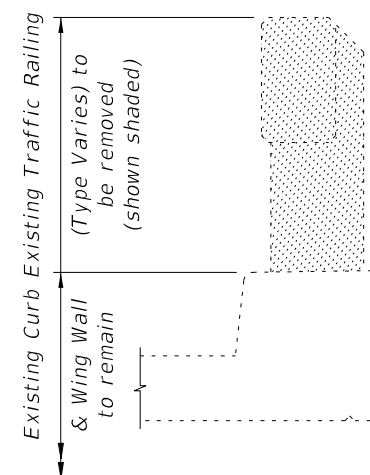


**SECTION B-B (SCHEME 2)**  
**TYPICAL SECTION THRU RAILING ALONG APPROACH SLAB**

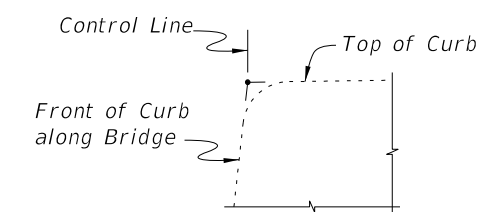
\* Shim with washers around Anchor Bolts and Anchors as required to maintain tolerance.

\*\* Offset may vary  $\pm 1$ " for Adhesive-Bonded Anchors to clear existing curb reinforcing and provide minimum edge clearance. Offset shall be consistent along length of bridge.

BILL OF REINFORCING STEEL		
MARK	SIZE	LENGTH
L	4	4'-1"
BAR BENDING DIAGRAM		
DOWEL BAR 4L		
NOTE: All bar dimensions are out to out.		



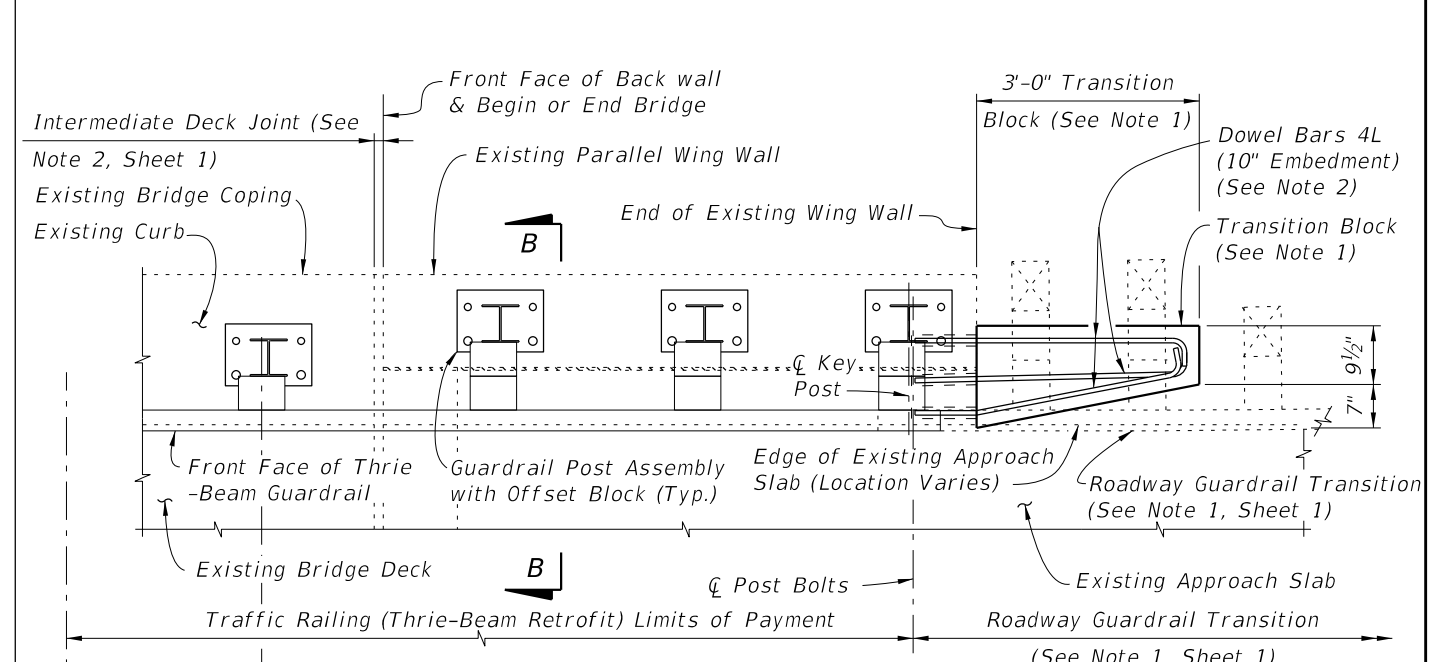
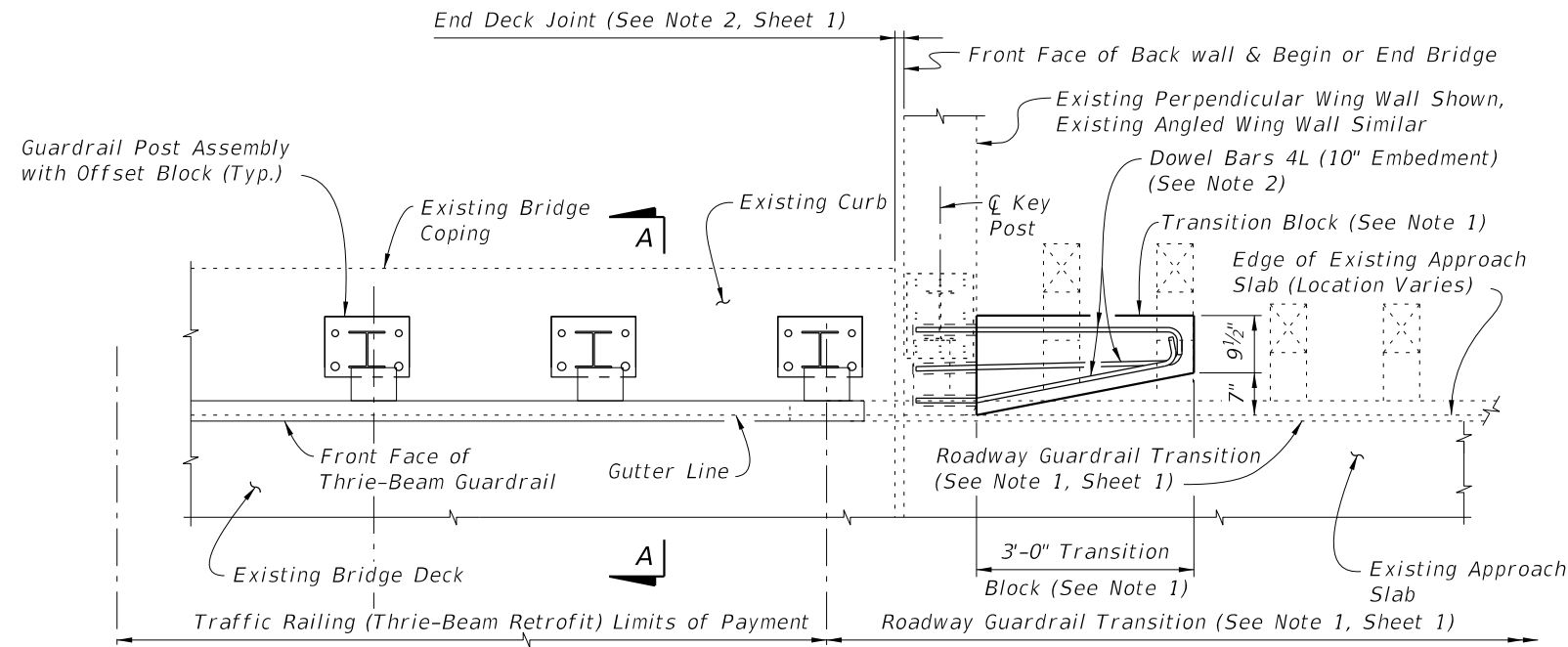
**TYPICAL SECTION THRU EXISTING TRAFFIC RAILING SHOWING LIMITS OF REMOVAL (BRIDGE DECK SHOWN, WING WALL SIMILAR)**



**DETAIL "A"**

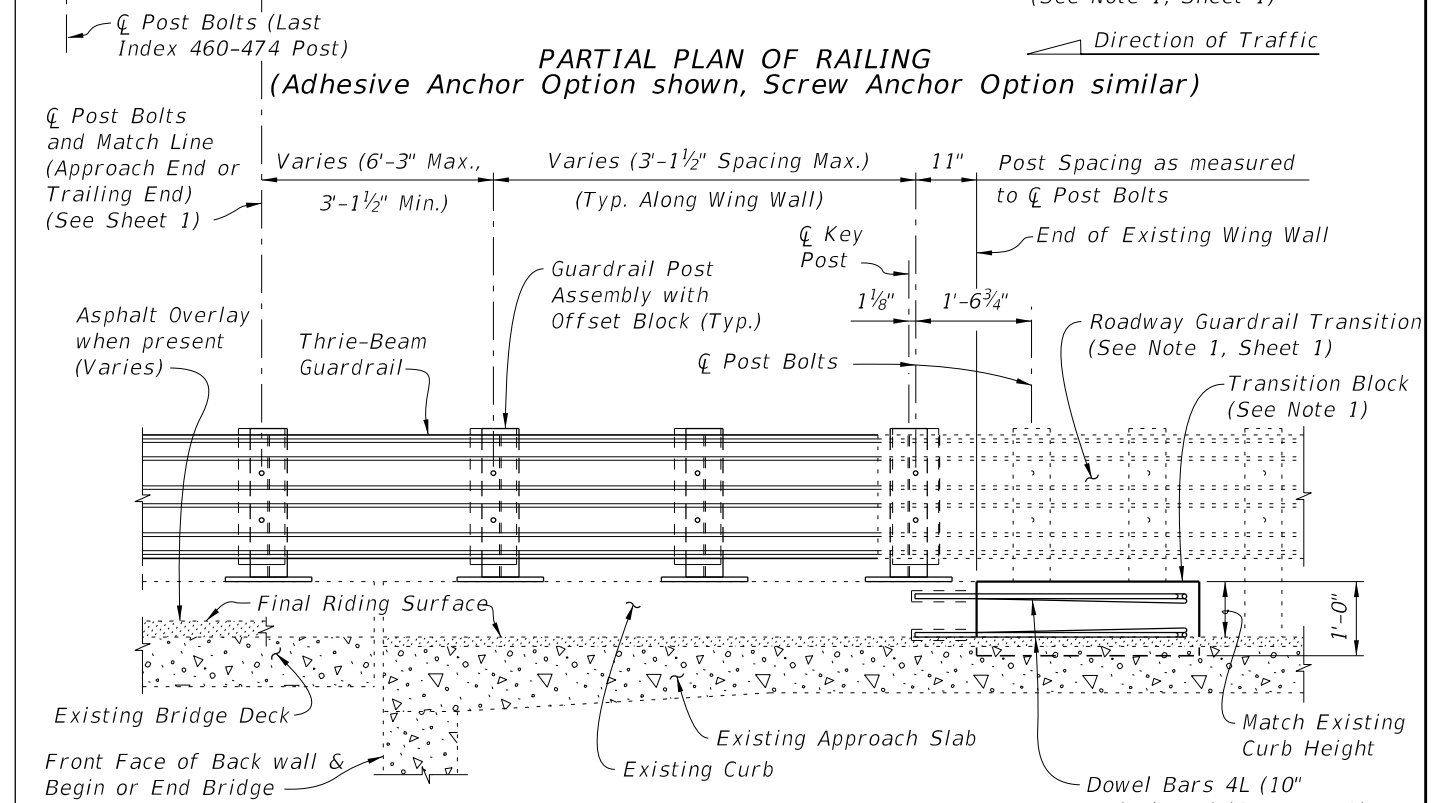
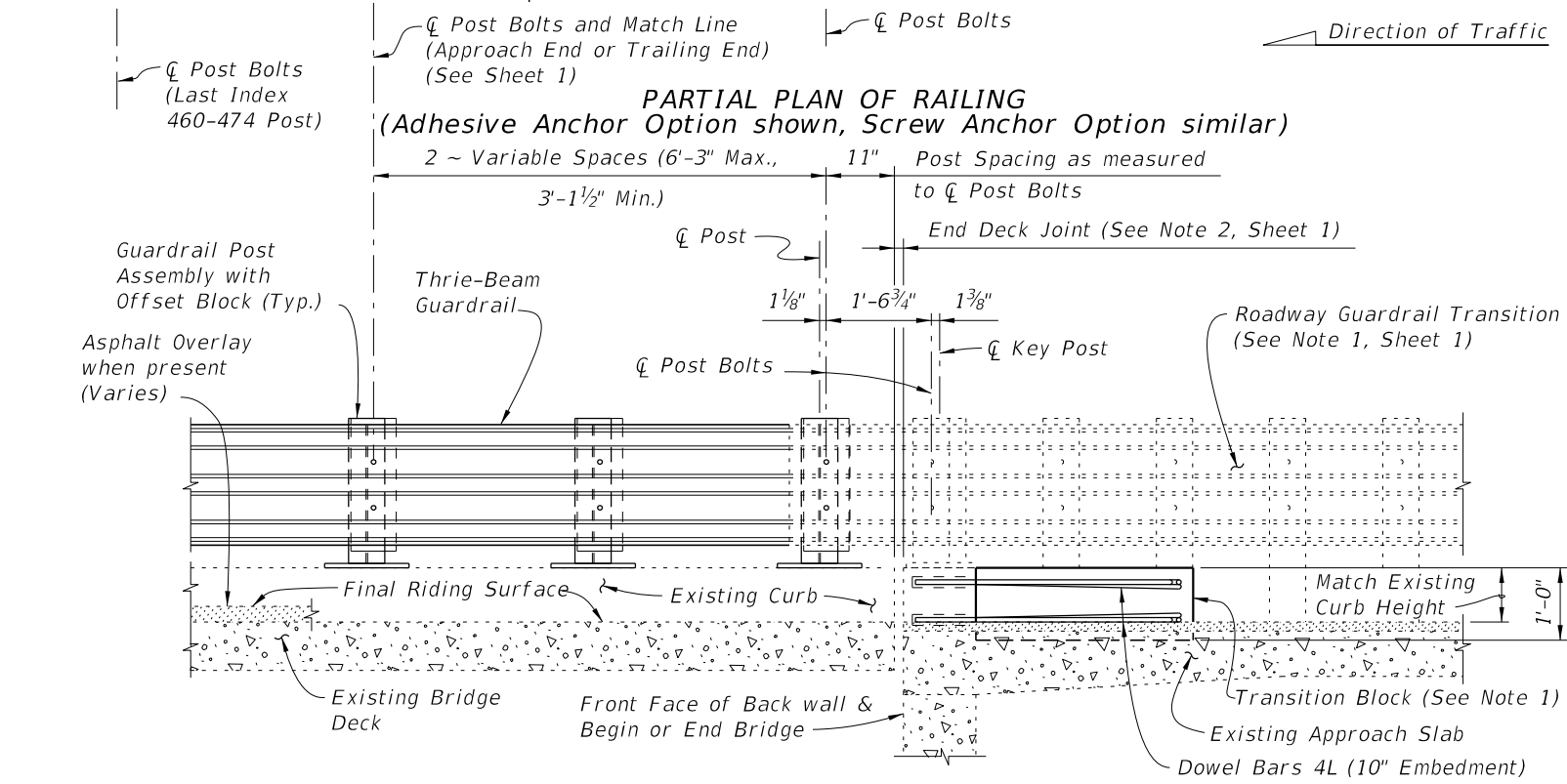
**CROSS REFERENCES:**  
 For location of Section A-A see Sheet 1 and 3.  
 For location of Section B-B see Sheet 3  
 For application of Dim. A see Post Dimension Table on Index 460-470, Sheet 3.

10/6/2025 3:01:16 PM



**PARTIAL PLAN OF RAILING**  
(Adhesive Anchor Option shown, Screw Anchor Option similar)

**PARTIAL PLAN OF RAILING**  
(Adhesive Anchor Option shown, Screw Anchor Option similar)



**PARTIAL ELEVATION OF INSIDE FACE OF RAILING**

**PARTIAL ELEVATION OF INSIDE FACE OF RAILING**

**SCHEME 1**  
**RAILING END TREATMENT FOR PERPENDICULAR OR ANGLED WING WALLS**

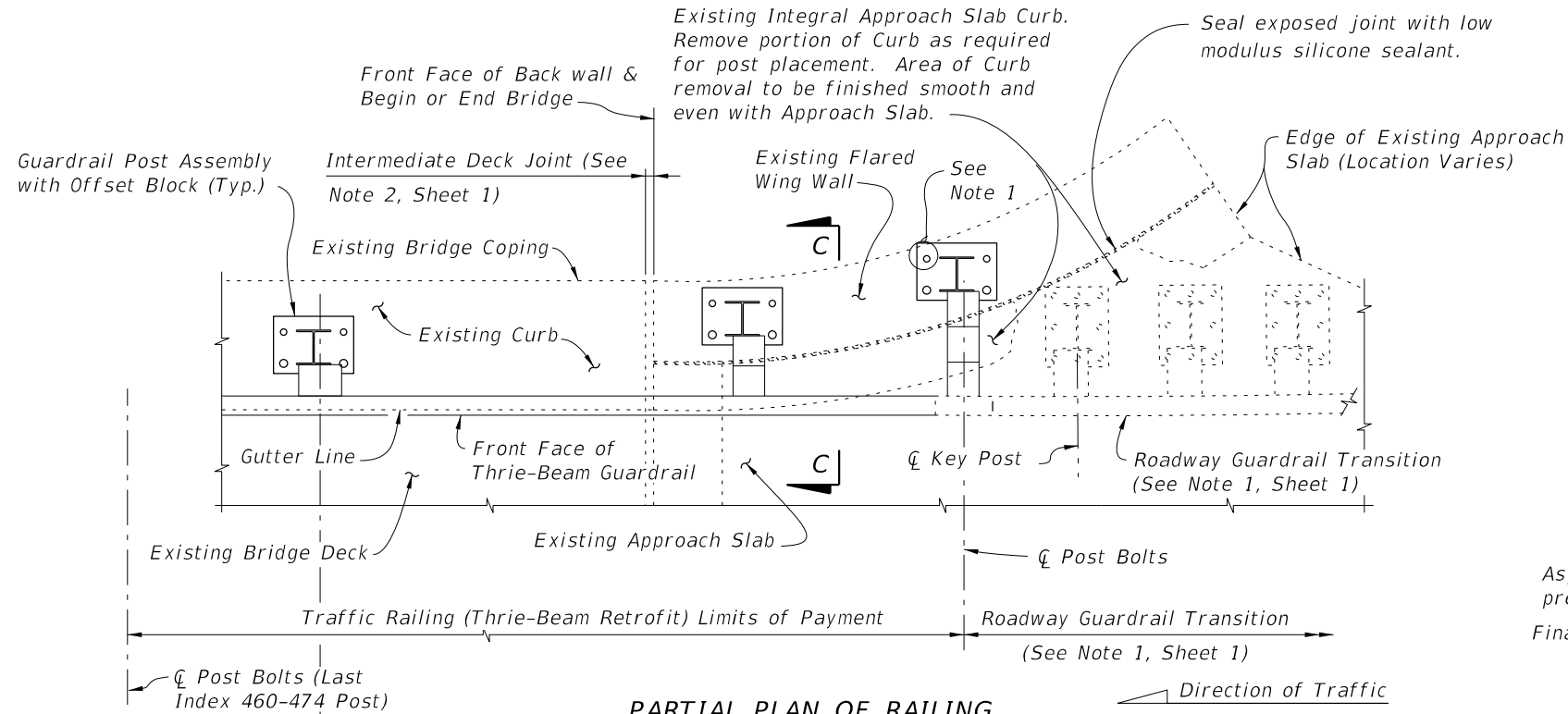
**SCHEME 2**  
**RAILING END TREATMENT FOR PARALLEL WING WALLS**

- SCHEME 1 NOTES:**
1. Provide Transition Block (as shown) or Curb if existing Approach Slab does not have a curb, see Roadway Plans. Shape and height of Transition Block or Curb shall match existing bridge curb. Transition Block may be omitted on trailing ends with no opposing traffic.
  2. Field bend Dowel Bars 4L within Transition Block as required to maintain 2" top and side clearance and 3" bottom clearance.

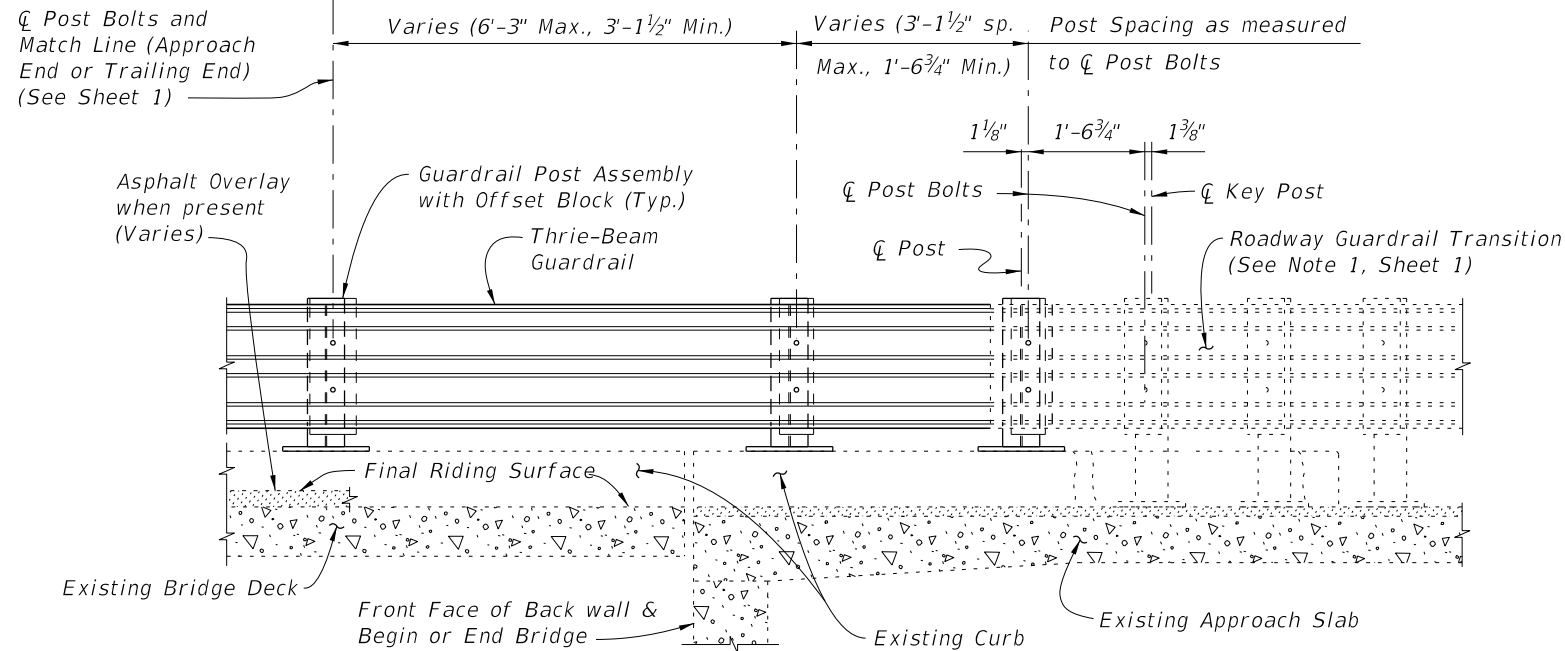
- SCHEME 2 NOTES:**
1. Provide Transition Block (as shown) or Curb if existing Approach Slab Curb does not extend to end of Approach Slab. Shape and height of Transition Block or Curb shall match existing bridge curb. Transition Block may be omitted on trailing ends with no opposing traffic.
  2. Field bend Dowel Bars 4L within Transition Block as required to maintain 2" top and side clearance and 3" bottom clearance.

10/6/2025 3:01:22 PM

LAST REVISION 11/01/24	REVISION	DESCRIPTION:		FY 2026-27 STANDARD PLANS	<b>TRAFFIC RAILING - (THRIE-BEAM RETROFIT)</b> <b>INTERMEDIATE CURB</b>	INDEX 460-474	SHEET 3 of 4
---------------------------	----------	--------------	--	------------------------------	--	------------------	-----------------

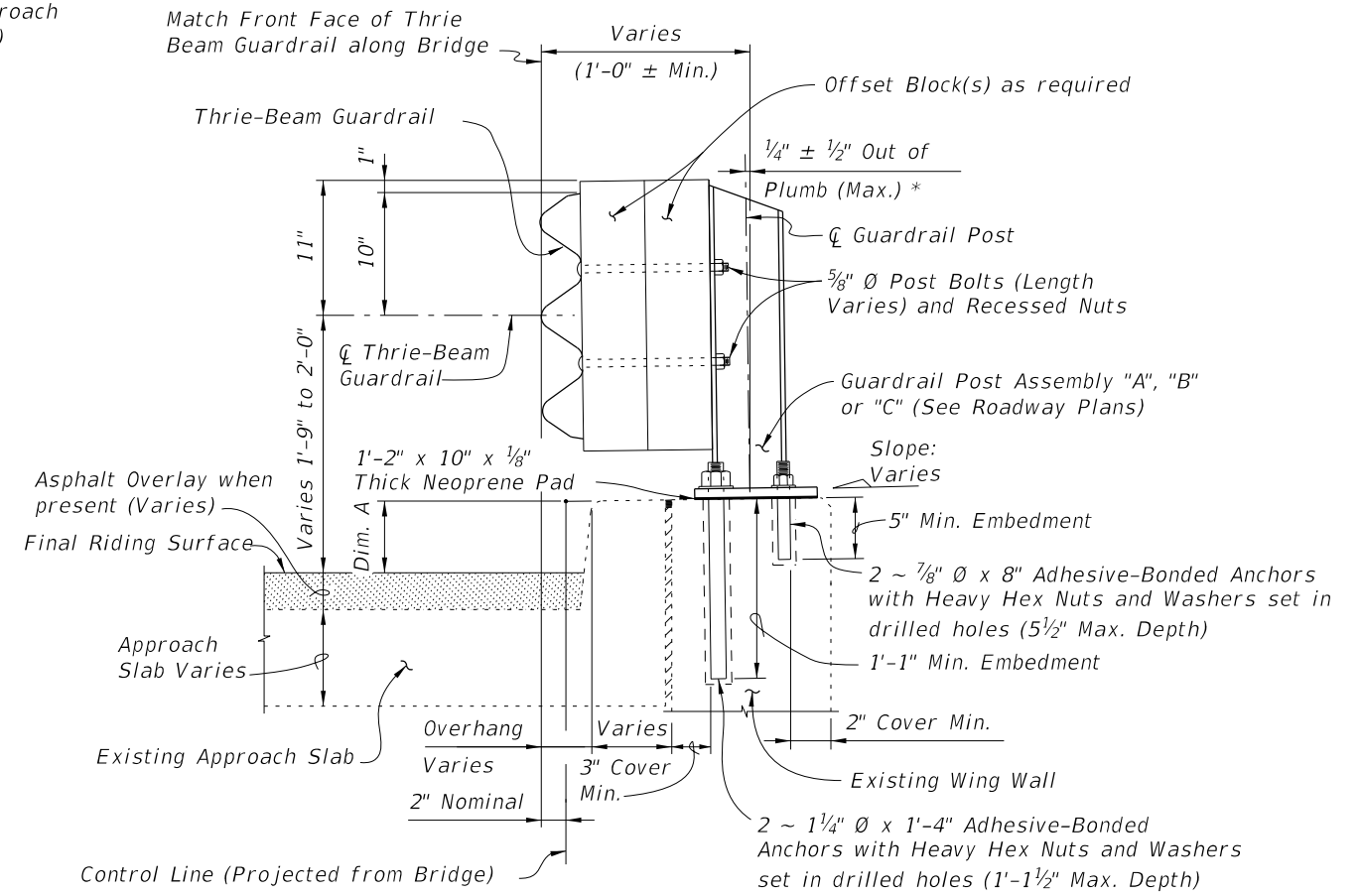


**PARTIAL PLAN OF RAILING**  
(Adhesive Anchor Option shown, Screw Anchor Option similar)



**PARTIAL ELEVATION OF INSIDE FACE OF RAILING**

**SCHEME 3**  
**RAILING END TREATMENT FOR FLARED WING WALLS**



**SECTION C-C (SCHEME 3)**  
**TYPICAL SECTION THRU RAILING ALONG APPROACH SLAB**  
(Adhesive Anchor Option only)

**SCHEME 3 NOTE:**

1. A single  $\frac{7}{8}$ "  $\varnothing$  x 8" Adhesive-Bonded Anchor may be omitted as shown when 2" clear cover cannot be provided (see Section C-C).

**CROSS REFERENCE:**

For application of Dim. A see Post Dimension Table on Index 460-470, Sheet 3.

10/6/2025 3:01:28 PM

LAST REVISION 11/01/24	DESCRIPTION:		FY 2026-27 STANDARD PLANS	<b>TRAFFIC RAILING - (THRIE-BEAM RETROFIT)</b> <b>INTERMEDIATE CURB</b>	INDEX 460-474	SHEET 4 of 4
---------------------------	--------------	--	------------------------------	--	------------------	-----------------